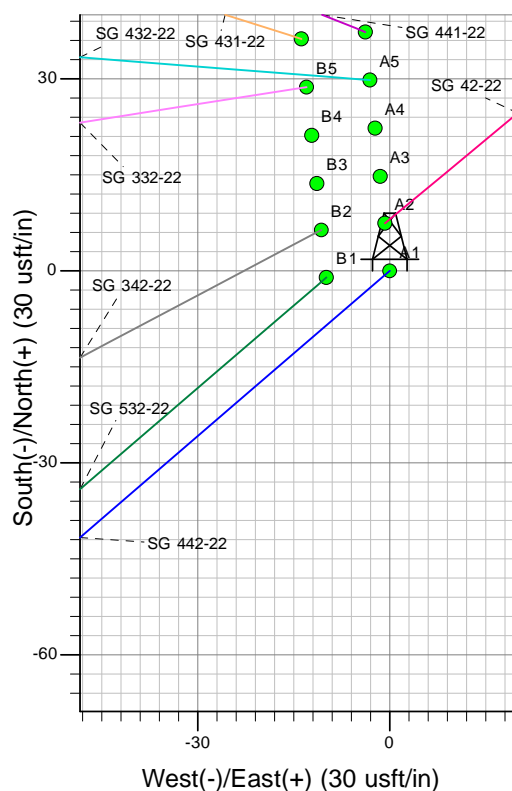
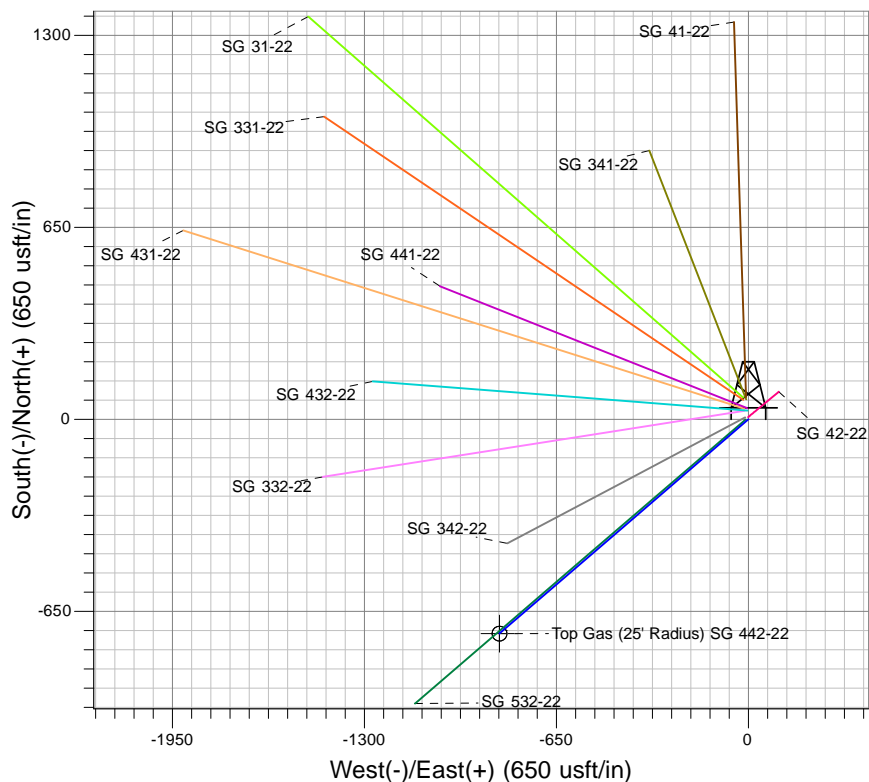
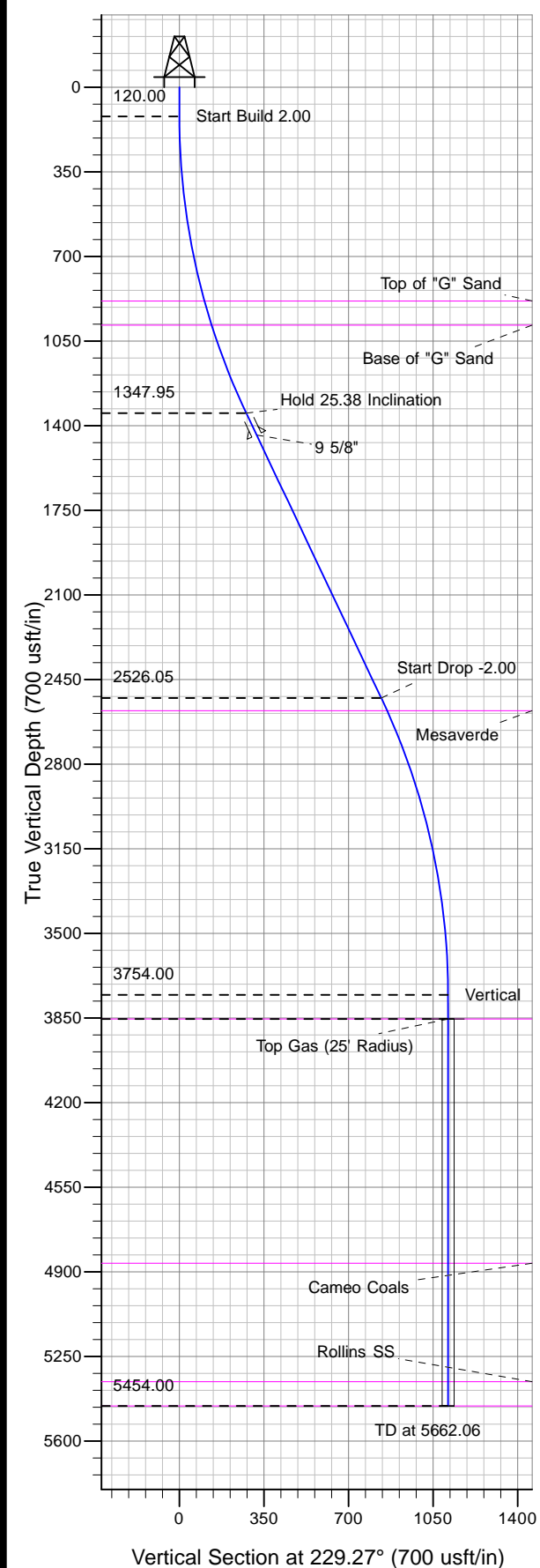




Well Name: SG 442-22
 Surface Location: SG 42-22 Pad
 North American Datum 1983 , US State Plane 1983 , Colorado Central Zone
 Ground Elevation: 5218.00
 +N/-S 0.00 +E/-W 0.00 Northing 1590494.14 Easting 2269052.88 Latitude 39.42609 Longitude -108.08795 Slot A1
 KELLY BUSHING @ 5244.00usft (Nabors 573 (26' RKB) kjs)



Project: SG 22-07S-096W
 Site: SG 42-22 Pad
 Well: SG 442-22
 Design #2 02Jul12 kjs

Azimuths to True North
 Magnetic North: 10.25°
 Magnetic Field
 Strength: 52161.0snT
 Dip Angle: 65.66°
 Date: 4/5/2012
 Model: IGRF2005-10

ANNOTATIONS

MD	Inc	Azi	TVD	+N/-S	+E/-W	Vsect	Departure	Annotation
120.00	0.00	0.00	120.00	0.00	0.00	0.00	0.00	Start Build 2.00
1389.05	25.38	229.27	1347.95	-180.42	-209.54	276.52	276.52	Hold 25.38 Inclination
2693.01	25.38	229.27	2526.05	-545.12	-633.09	835.44	835.44	Start Drop -2.00
3962.06	0.00	0.00	3754.00	-725.54	-842.64	1111.96	1111.96	Vertical
4062.06	0.00	0.00	3854.00	-725.54	-842.64	1111.96	1111.96	Top Gas
5662.06	0.00	0.00	5454.00	-725.54	-842.64	1111.96	1111.96	TD at 5662.06