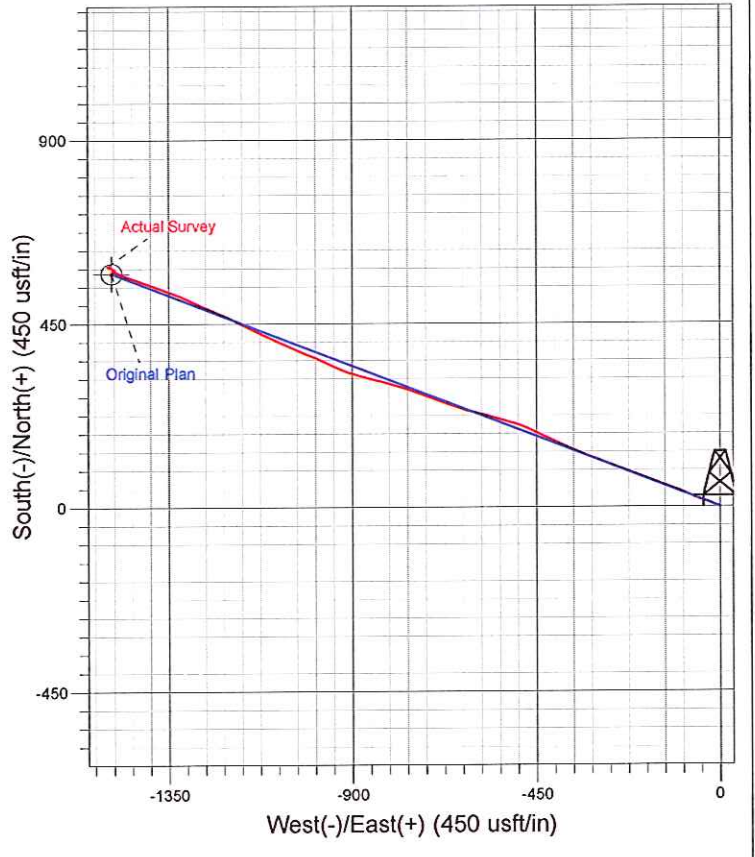
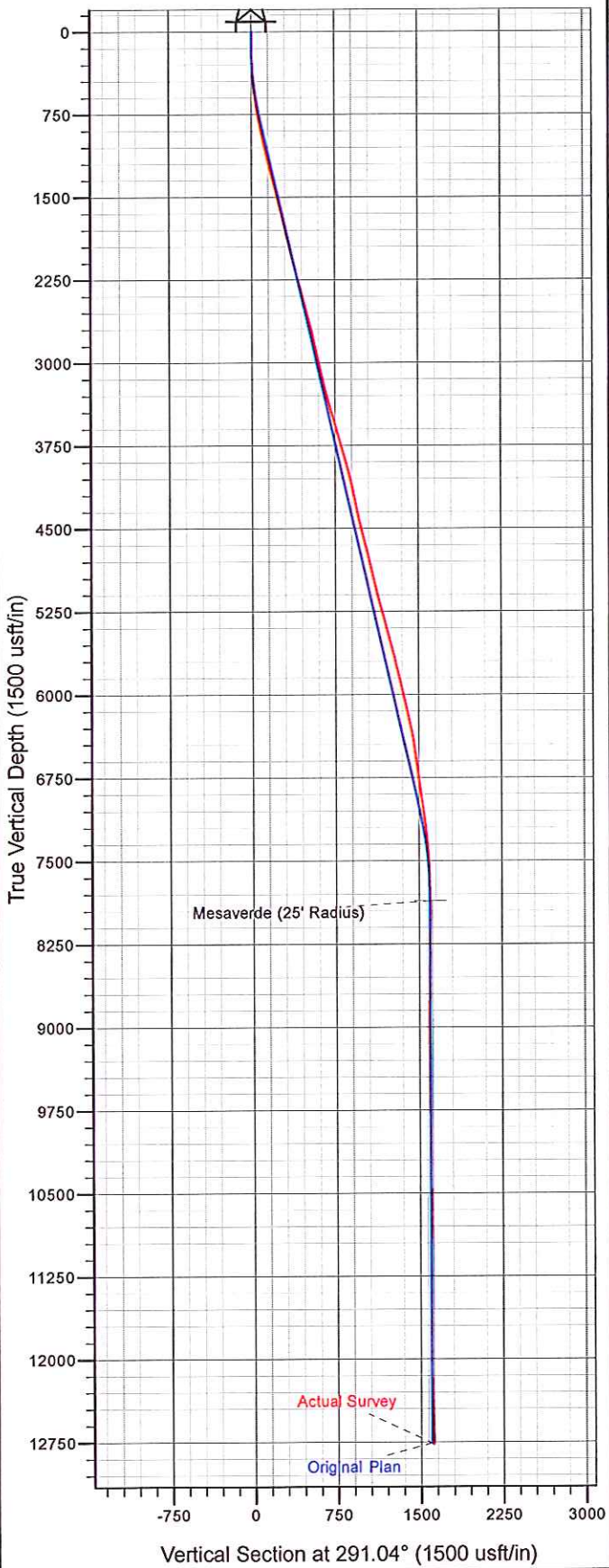




Well Name: Federal RGU 22-25-198
 Surface Location: RGU 32-25-198 Pad
 North American Datum 1983 , US State Plane 1983. Colorado Central Zone
 Ground Elevation: 6670.00
 +N/-S +E/-W Northing Easting Latitude Longitude Slot
 0.00 0.00 1778140.70 2203856.90 39.93565 -108.33939 A5
 KELLY BUSHING @ 6691.00usft (Cyclone 29 (21') kjs)



	Azimuths to True North
	Magnetic North: 10.48°
Magnetic Field	
Strength: 52375.0snT	
Dip Angle: 66.02°	
Date: 1/29/2012	
Model: IGRF2010	