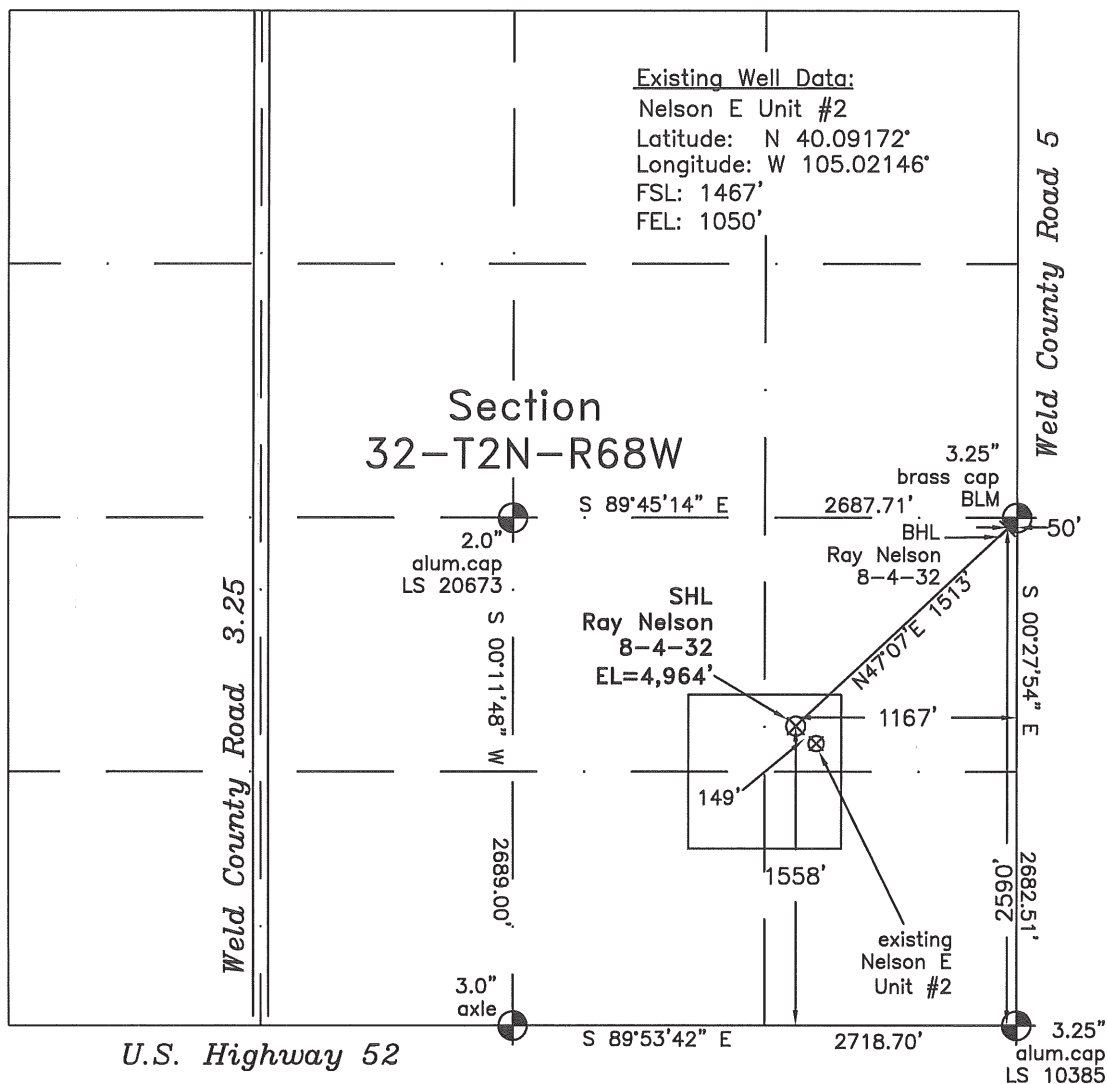


## WELL LOCATION CERTIFICATE

THIS MAP DOES NOT REPRESENT A BOUNDARY SURVEY



In accordance with a request from Doug Pearlman of EnCana Oil & Gas (USA) Inc., Frederick Land Surveying, Inc. has determined the location of the **Ray Nelson 8-4-32** well site to be SHL: 1558' FSL and 1167' FEL, BHL (2590' FSL and 50' FEL) as measured at ninety (90) degrees from the section lines of Section 32, Township 2 North, Range 68 West of the 6th Principal Meridian, Weld County, Colorado.

Proposed Surface Hole Data:

Latitude: N 40.09197° BHL (40.09478°)

Longitude: W 105.02188° BHL (105.01789°)

Nearest: Building 897' east

Public Road 1146' east

Property Line 181' south

PDOP: 1.6

Above Ground Utility 1179' east

Railroad 9600' south

Notes:

- 1) Bearings and distances based on NAD 83 Colorado North State Plane Coordinates using RTK GPS observations taken 6/15/10 by operator Craig Burke.
- 2) Conversion factor to ground (1.000274294).
- 3) Elevations based on NAVD 88 GPS heights and Geoid 2003 corrections.
- 4) See improvement map for visible improvements within 400 feet of pad site.
- 5) The location falls in an agricultural field.

**NOTICE:** According to Colorado law you MUST commence any legal action based upon any defect in this W.L.C. within 3 years after you first discover such defect. In no event may any action based upon any defect in this W.L.C. be commenced more than 10 years from this said date of the certification shown hereon.

I hereby certify that this Well Location Certificate was prepared by me or under my direct supervision on 6/22/10 for and on behalf of EnCana Oil & Gas (USA) Inc. and that it is not a Land Survey or an improvement Survey and that it is not to be relied upon for establishment of fences, buildings, or other future improvement lines.

Alex Ronald Perkins LS#34176  
 Job #: 09063.021 6-24-2010