

Job # 12183-APC-Martin #1-3  
Rev: 9/11/12

Inv # 2080

High Prairie Surveying of Kiowa, Colorado has in accordance with a request from **Mary F Combs, Grand Mesa Operating Company** has determined the location of **APC-Martin #1-3** to be **1743' FSL and 1539' FEL**, (90° off Section lines) of **SECTION 3**, Township **10s**, Range **55w** of the 6th Principal Meridian, **Lincoln County**, Colorado.

Date: Staked on 9/6/12 drawn on 9/7/12.

**Re:** Staked by Keith Westfall

**Drawn:** Drawn by Dustin Cotter

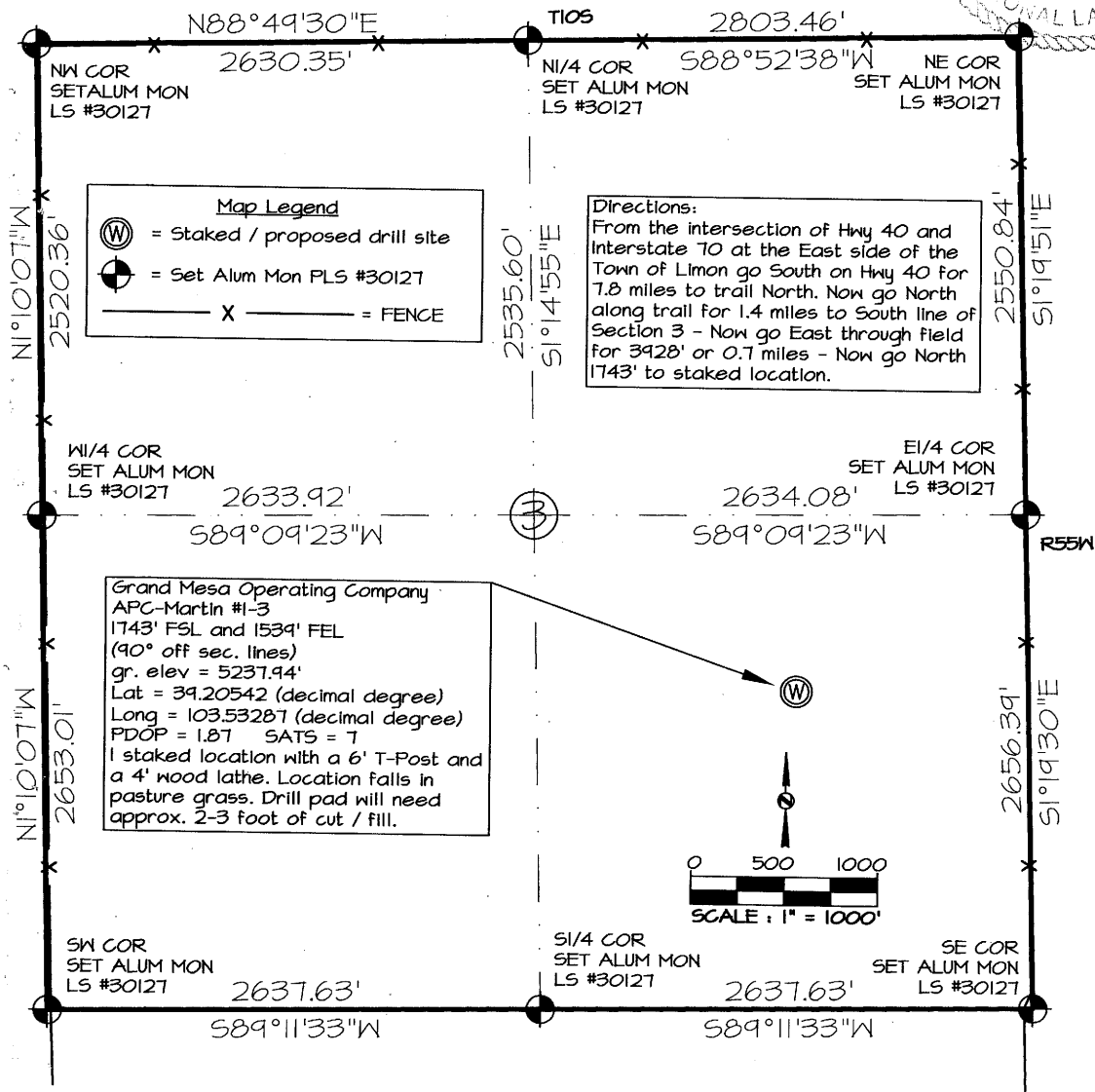
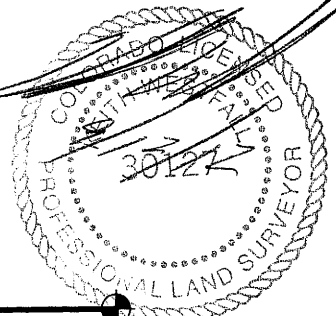
**Basis of Elevation Spot:** USGS BM = E 25, PID = KJ0219, H-Order = First, V-Order = First, Stability = C, P-DOP = 2.5, SATS = 7, US NAD 83 CO-C, Lat. = 39.21461, Long. = W103.60209, Elevation = 5248.17 gr. (us FT)

**Notes:** There are no apparent improvements within 400' of proposed well pad..

The ground elevation at staked location = 5237.94' gr.

This drawing does not represent a monumented survey or Land Survey Plat.

**Basis of Bearing:** Bearings were determined based on the South line of SECTION 3 to bear S 89°11'33" W with all other bearings contained herein relative thereto.



# High Prairie

Survey Co.

Physical Address: 345 Comanche St.  
Mail to: Box 384 Kiowa, CO 80117  
Ph. 303-621-8672 - Fax 303-621-2717  
www.highprairiesurvey.com

Job # 12183-APC-Martin #1-3  
Rev: 9/11/12

Inv # 2080

High Prairie Surveying of Kiowa, Colorado has in accordance with a request from **Mary F Combs, Grand Mesa Operating Company** has determined the location of **APC-Martin #1-3** to be **1743' FSL and 1539' FEL**, (90° off Section lines) of **SECTION 3**, Township **10s**, Range **55w** of the 6th Principal Meridian, **Lincoln County**, Colorado.

Date: Staked on 9/6/12 drawn on 9/7/12.

Re: Staked by Keith Westfall

Drawn: Drawn by Dustin Cotter

**Basis of Elevation Spot:** USGS BM = E 25, PID = KJ0219, H-Order = First, V-Order = First, Stability = C, P-DOP = 2.5, SATS = 7, US NAD 83 CO-C, Lat. = 39.21461, Long. = W103.60209, Elevation = 5248.17 gr. (us FT)

**Notes:** There are no apparent improvements within 400' of proposed well pad..  
The ground elevation at staked location = 5237.94' gr.  
This drawing does not represent a monumented survey or Land Survey Plat.

**Basis of Bearing:** Bearings were determined based on the South line of Section 3 to bear S 89°11'33" W with all other bearings contained herein relative thereto.

