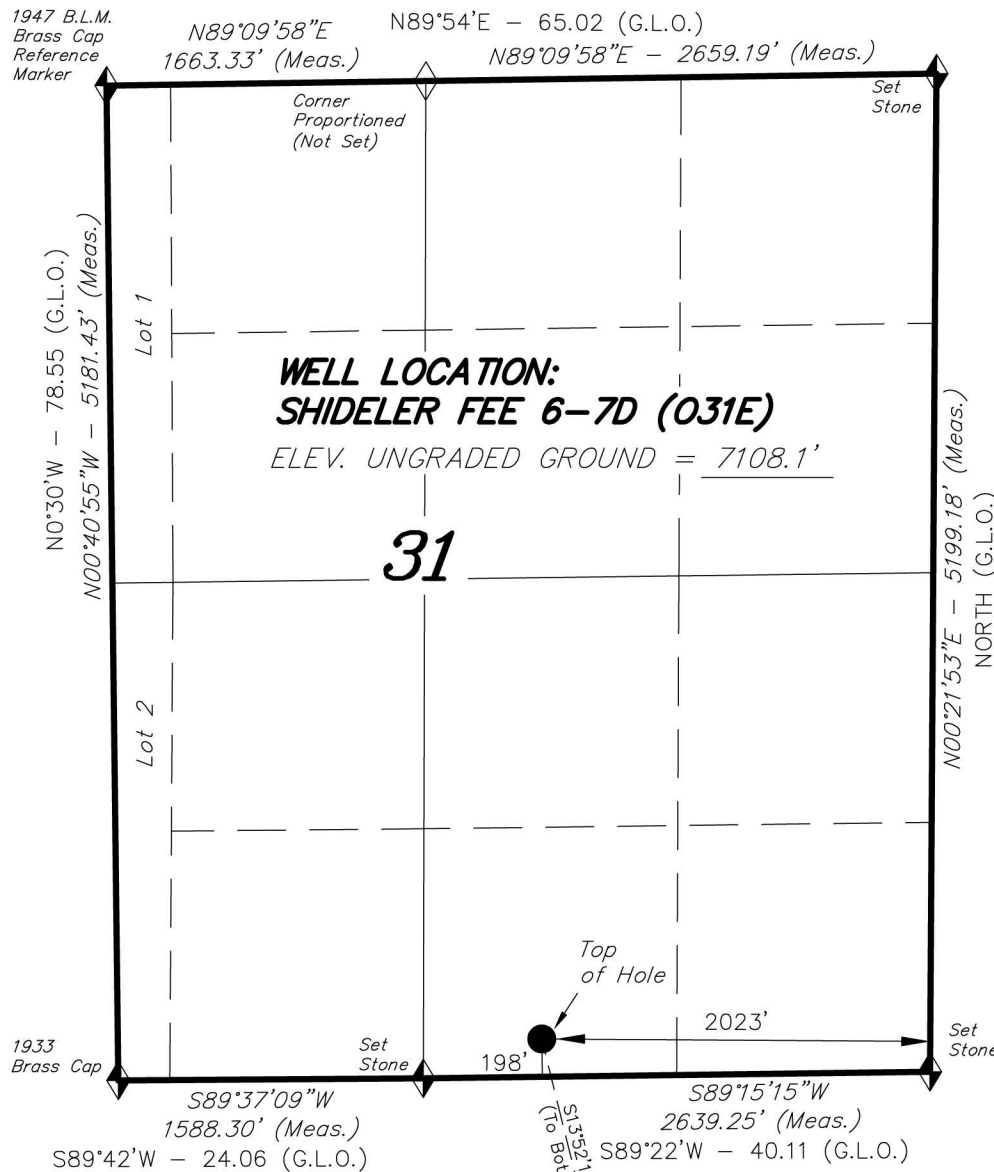


**T7S, R92W, 6th P.M.**

**ENCANA OIL & GAS (USA) INC**

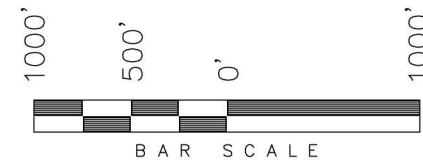
WELL LOCATION, SHIDELER FEE 6-7D  
(O31E), LOCATED AS SHOWN IN THE SW  
1/4 SE 1/4 OF SECTION 31, T7S,  
R92W, 6th P.M. GARFIELD COUNTY,  
COLORADO.



◆ = SECTION CORNERS LOCATED

Basis of elevation is the Rifle 2 Triangulation Station. 39°31'53.80" N Lat. & 107°47'07.78" W Long. (NAD 83). Elevation = 5323.1' (NAVD88).

NAD 83 (SURFACE LOCATION)	
LATITUDE =	39°23'46.78" (39.396328°)
LONGITUDE =	107°42'22.05" (107.706125°)



**NOTES:**

1. Well footages are measured at right angles to the Section Lines.
2. Bearings are based on Global Positioning Satellite observations.
3. G.P.S. Operator: C.D. Slaugh, (PDOP) = 2.9

THIS IS TO CERTIFY THAT THE ABOVE PLAT WAS PREPARED FROM FIELD NOTES OF REAL SURVEYS MADE BY ME OR UNDER MY SUPERVISION. THE LOCATION HAS BEEN STAKED ON THE GROUND AS SHOWN ON THE PLAT, AND THAT THE SAID CORNERS ARE TRUE AND CORRECT TO THE BEST OF MY KNOWLEDGE AND BELIEF.

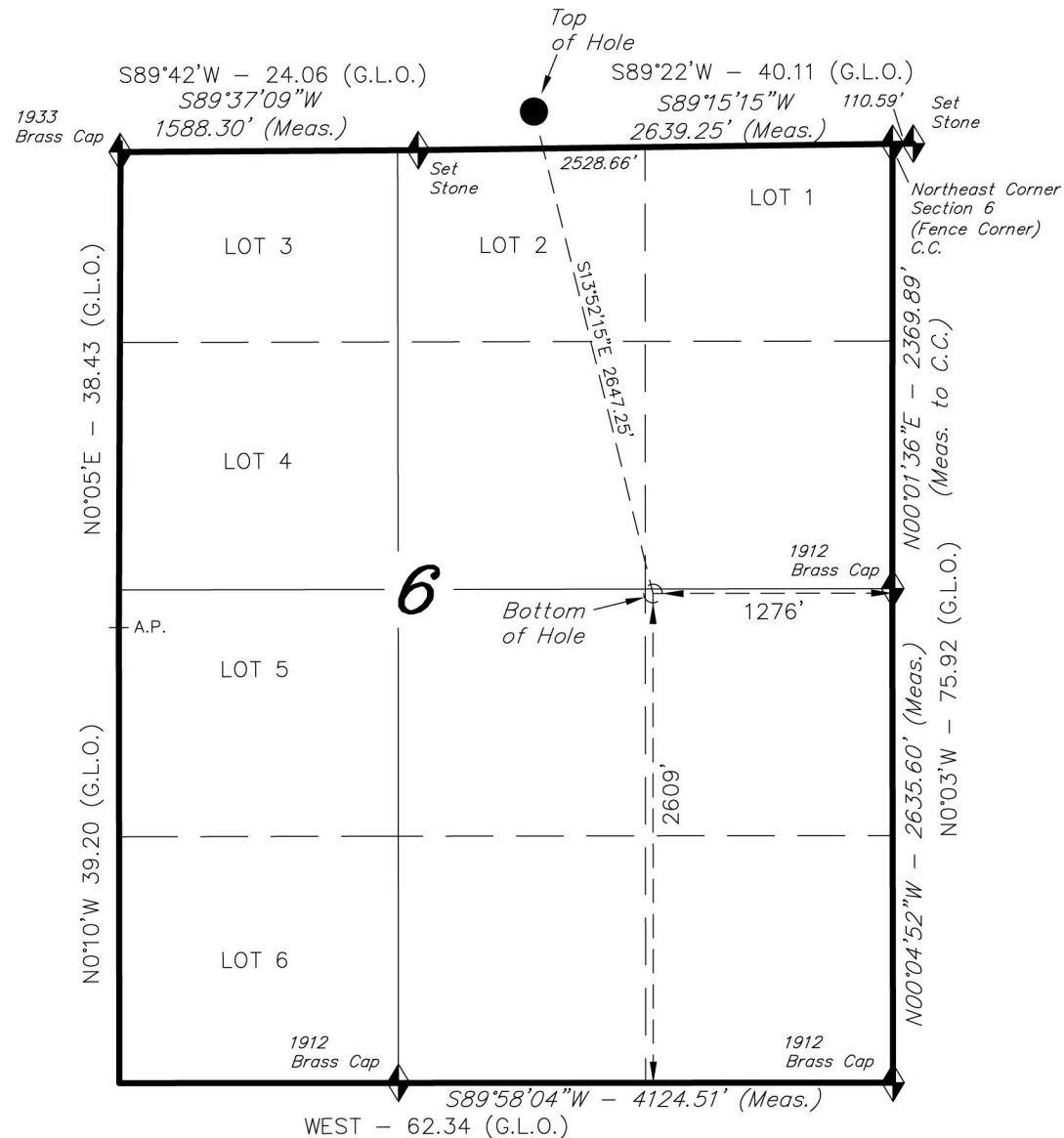
*[Signature]*  
REGISTERED LAND SURVEYOR  
REGISTRATION NO. 30125  
STATE OF COLORADO

**TRI STATE LAND SURVEYING & CONSULTING**

180 NORTH VERNAL AVE. - VERNAL, UTAH 84078  
(435) 781-2501

DATE SURVEYED: 11-13-10	SURVEYED BY: C.D.S	<b>SHEET 22 OF 37</b>
DATE DRAWN: 11-16-11	DRAWN BY: M.W.	
REVISED: 09-10-12 M.W.	SCALE: 1" = 1000'	

*ENCANA OIL & GAS (USA) INC*

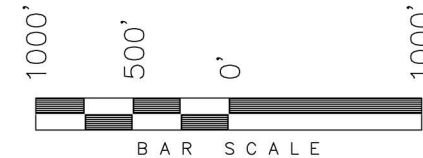


 = SECTION CORNERS LOCATED

Basis of elevation is the Rifle 2 Triangulation Station. 39°31'53.80" N Lat. & 107°47'07.78" W Long. (NAD 83). Elevation = 5323.1' (NAVD88).

NAD 83 (BOTTOM HOLE LOCATION)	
LATITUDE	= 39°23'21.38" (39.389273°)
LONGITUDE	= 107°42'14.00" (107.703888°)

TARGET BOTTOM HOLE, SHIDELER FEE  
6-7D (O31E), LOCATED AS SHOWN IN  
THE NE 1/4 SE 1/4 OF SECTION 6,  
T8S, R92W, 6th P.M. GARFIELD COUNTY,  
COLORADO.



NOTES:

1. Well footages are measured at right angles to the Section Lines.
2. Bearings are based on Global Positioning Satellite observations.

**TARGET BOTTOM HOLE:  
SHIDELER FEE 6-7D (031E)**

THIS IS TO CERTIFY THAT THE ABOVE PLAT WAS  
PREPARED FROM FIELD NOTES OF A MINERAL SURVEY  
MADE BY ME OR UNDER MY SUPERVISION, THE LOCATION  
HAS BEEN STAKED ON THE GROUND, AND SHOWN ON THE  
PLAT, AND THAT THE SAME ARE TRUE AND CORRECT  
TO THE BEST OF MY KNOWLEDGE AND BELIEF.

REGISTERED LAND SURVEYOR  
REGISTRATION NO. 30125  
STATE OF COLORADO

**TRI STATE LAND SURVEYING & CONSULTING**

180 NORTH VERNAL AVE. — VERNAL, UTAH 84078  
(435) 781-2501

DATE SURVEYED: 11-13-10	SURVEYED BY: C.D.S	<b>SHEET</b> <b>22a</b> <b>OF 37</b>
DATE DRAWN: 11-16-11	DRAWN BY: M.W.	
REVISED: 09-10-12 M.W.	SCALE: 1" = 1000'	