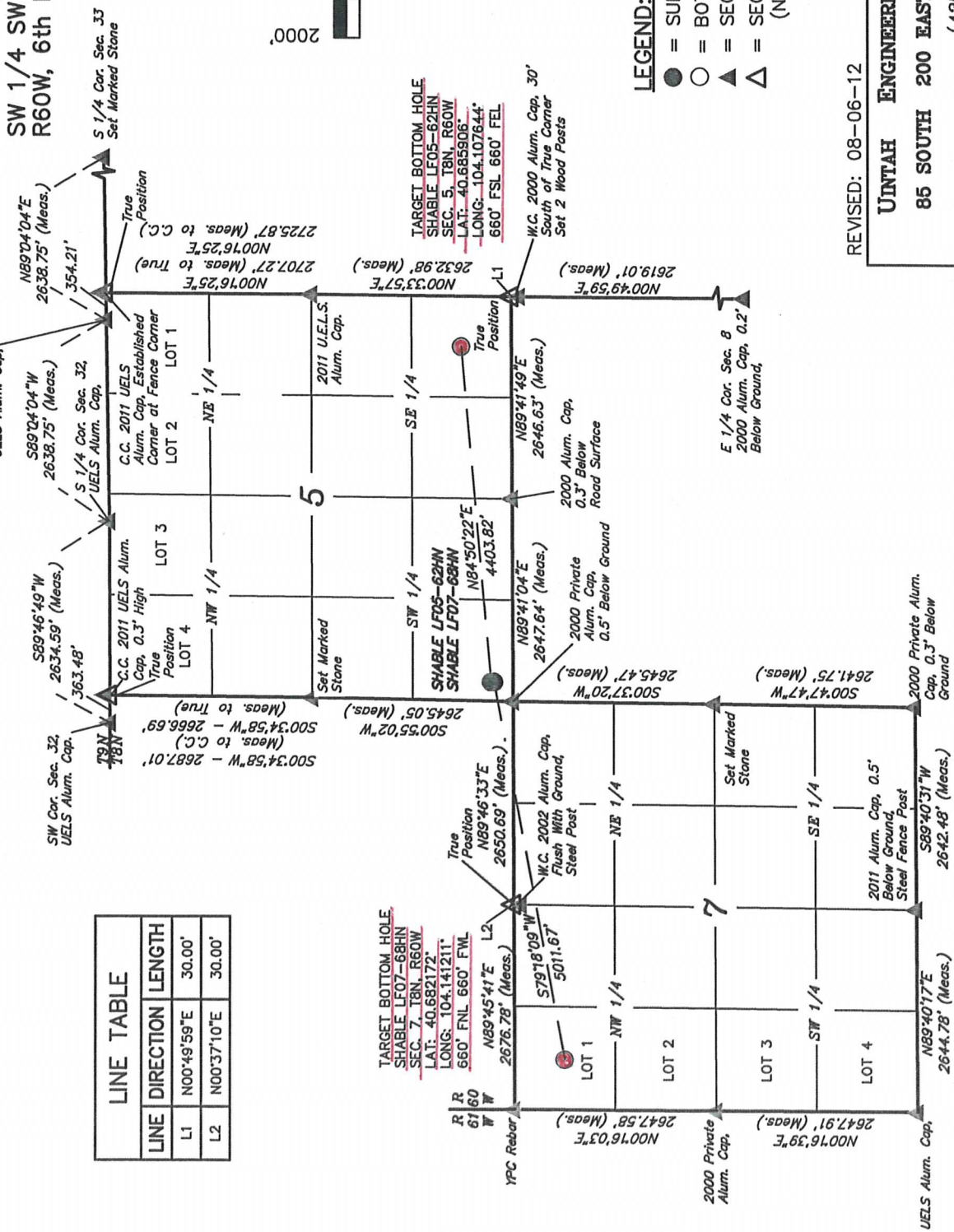
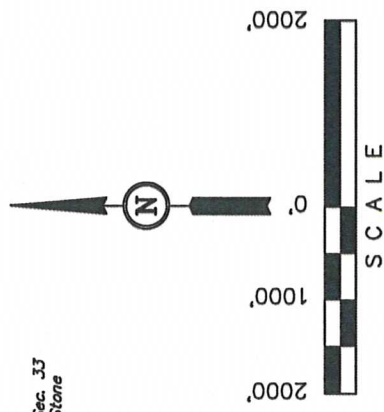


MULTI-WELL PLAN T8N, R60W, 6th P.M.

NOBLE ENERGY, INC.

Well location, SHABLE LF05-62HN & LF07-68HN, located as shown in the SW 1/4 SW 1/4 of Section 5, T8N, R60W, 6th P.M., Weld County, Colorado.

LINE TABLE	
LINE	DIRECTION LENGTH
L1	N00°49'59"E 30.00'
L2	N00°37'10"E 30.00'



TARGET BOTTOM HOLE
SHABLE LF07-68HN
SEC. 7, T8N, R60W
LAT: 40.682172°
LONG: 104.141211°
660' FNL 660' FWL
N89°45'41"E L2
2676.78' (Meas.)

TARGET BOTTOM HOLE
SHABLE LF05-62HN
SEC. 5, T8N, R60W
LAT: 40.685906°
LONG: 104.107644°
660' FSL 660' FEL

LEGEND:

- = SURFACE LOCATION
- = BOTTOM HOLE
- ▲ = SECTION CORNERS LOCATED
- △ = SECTION CORNERS RE-ESTABLISHED (Not Set on Ground.)

REVISED: 08-06-12

UNTIAH ENGINEERING & LAND SURVEYING
85 SOUTH 200 EAST - VERNAL, UTAH 84078
(435) 789-1017

SCALE	1" = 2000'	DATE SURVEYED:	05-30-12	DATE DRAWN:	07-31-12
PARTY	L.S. J.W.	REFERENCES	G.L.O. PLAT		
WEATHER	WARM	FILE	NOBLE ENERGY, INC.		

NOBLE ENERGY, INC.

MULTI-WELL PLAN

SHABLE LF05-62HN & LF07-68HN
SECTION 5, T8N, R60W, 6th P.M.

DATE: 07-31-12
DRAWN BY: J.W.

