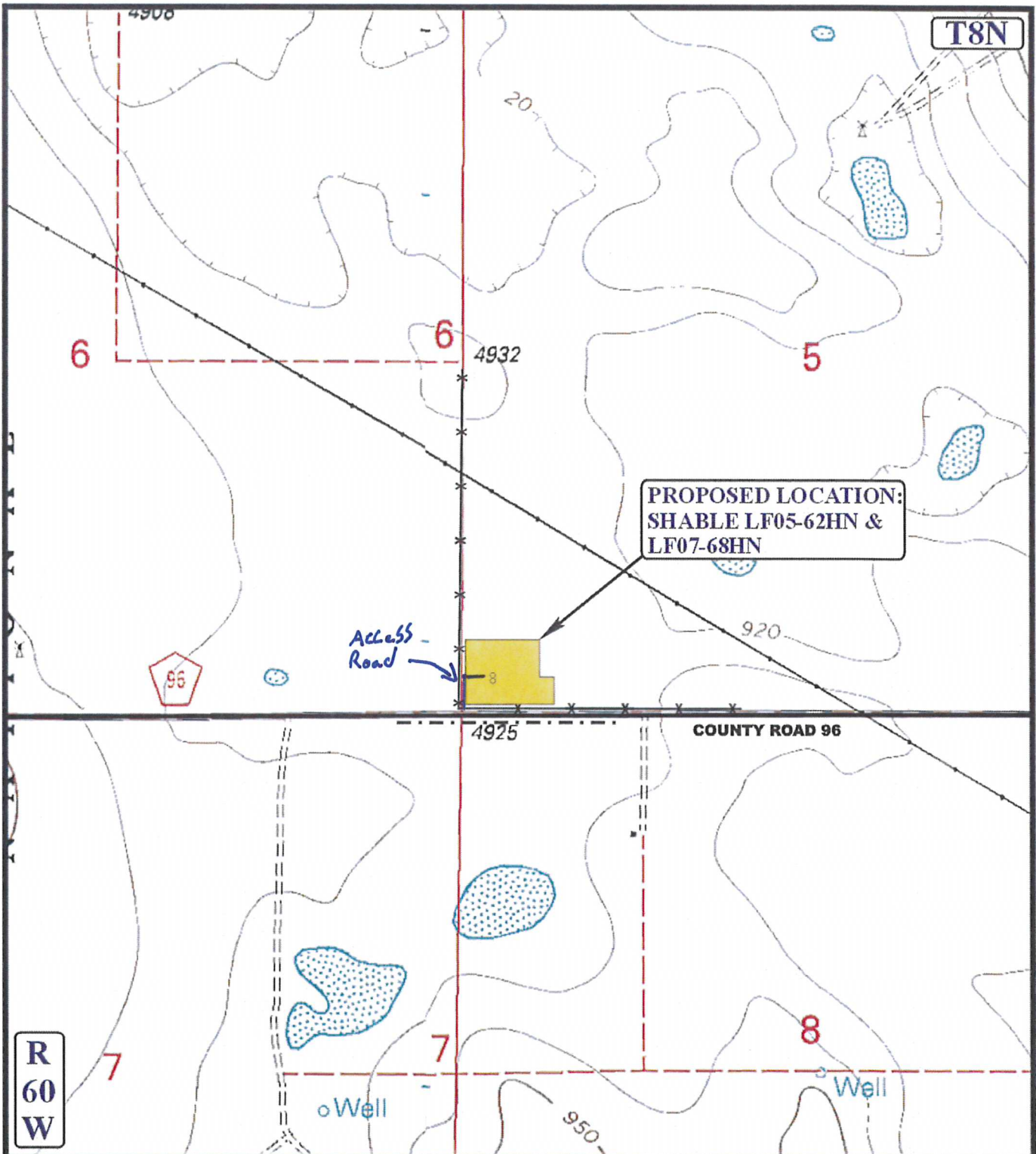


T8N



PROPOSED LOCATION:
SHABLE LF05-62HN &
LF07-68HN

Access Road

COUNTY ROAD 96

R
60
W

LEGEND:

- EXISTING ROAD
- - - - - EXISTING POWER LINE
- * * * * * EXISTING FENCE

NOBLE ENERGY, INC.

SHABLE LF05-62HN & LF07-68HN
SECTION 5, T8N, R60W, 6th P.M.



Utah Engineering & Land Surveying
85 South 200 East Vernal, Utah 84078
(435) 789-1017 * FAX (435) 789-1813

ACCESS ROAD
MAP

07 31 12
MONTH DAY YEAR

SCALE: 1" = 1000' DRAWN BY: B.G. REV: 08-06-12 J.L.H.

1
TOPO