

WELL LOCATION PLAT

T8N, R60W, 6th P.M.

NOBLE ENERGY, INC.

Well location, SHABLE LF07-68HN (SURFACE LOCATION), located as shown in the SW 1/4 SW 1/4 of Section 5, T8N, R60W, 6th P.M., Weld County, Colorado.

BASIS OF ELEVATION

SPOT ELEVATION LOCATED AT THE NORTHEAST CORNER OF SECTION 2, T9N, R61W, 6th P.M., TAKEN FROM THE GROVER SOUTH, QUADRANGLE, COLORADO, WELD COUNTY, 7.5 MINUTE QUAD (TOPOGRAPHICAL MAP) PUBLISHED BY THE UNITED STATES DEPARTMENT OF THE INTERIOR, GEOLOGICAL SURVEY. SAID ELEVATION IS MARKED AS BEING 5043 FEET.

BASIS OF BEARINGS

BASIS OF BEARINGS IS A G.P.S. OBSERVATION.

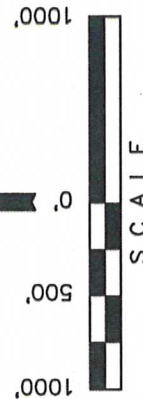
LEGEND:

- = 90° SYMBOL
 - = PROPOSED WELL HEAD.
 - ▲ = SECTION CORNERS LOCATED.
 - △ = SECTION CORNERS RE-ESTABLISHED.
- (Not Set on Ground.)

NOTE:
SEE LOCATION DRAWING FOR
EXISTING IMPROVEMENTS WITHIN 400'
OF THE PROPOSED DISTURBANCE.

NOTE:
THE PROPOSED BOTTOM HOLE FOR THIS
WELL IS LOCATED IN LOT 1 OF SECTION 7,
T8N, R60W, 6th P.M. AT 660' FNL 660' FNL.
IT BEARS S79°18'09"W 5011.67' FROM THE
PROPOSED WELL HEAD.

LINE TABLE		
LINE	DIRECTION	LENGTH
L1	N00°49'59"E	30.00'



CERTIFICATE

THIS IS TO CERTIFY THAT THE ABOVE PLAT WAS PREPARED FROM FIELD NOTES OF ACTUAL SURVEYS MADE BY ME OR UNDER MY SUPERVISION AND THAT THE SAME ARE TRUE AND CORRECT TO THE BEST OF MY KNOWLEDGE AND BELIEF.

REGISTERED LAND SURVEYOR
REGISTRATION NO. 7492
STATE OF COLORADO
08-06-12

REVISED 08-06-12

UNTAH ENGINEERING & LAND SURVEYING
85 SOUTH 200 EAST - VERNAL, UTAH 84078
(435) 789-1017

SCALE 1" = 1000'	DATE SURVEYED: 05-30-12	DATE DRAWN: 07-30-12
PARTY LOREN SHANKS J.W.	REFERENCES G.L.O. PLAT	
WEATHER WARM	FILE	NOBLE ENERGY, INC.

FEATURE TABLE

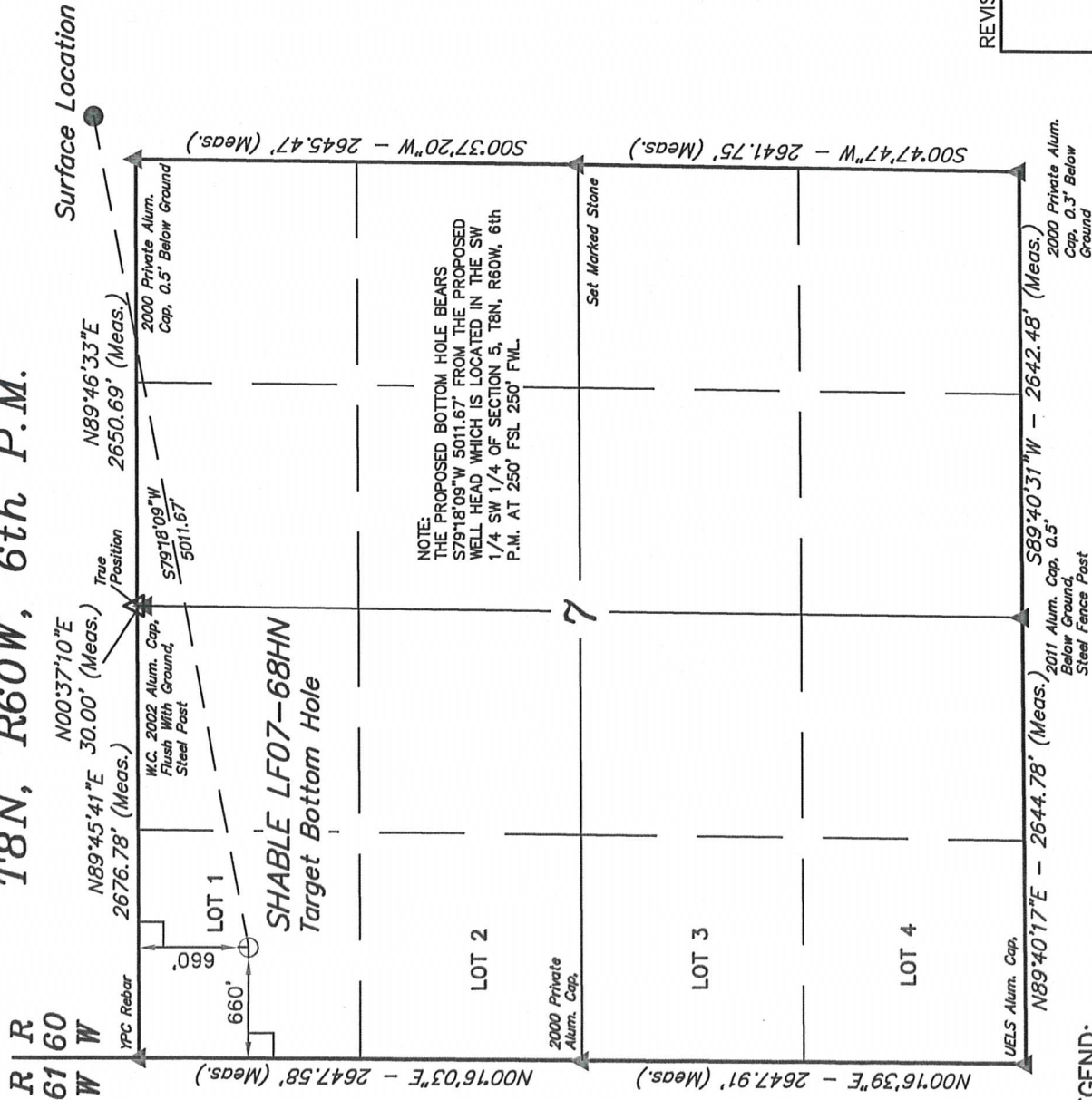
EXISTING FEATURE	DIRECTION	LENGTH
PROPERTY LINE	WEST	250'

PDOP = 1.7

NAD 83 (SURFACE LOCATION)
LATITUDE = 40°41'05.00" (40.684722)
LONGITUDE = 104°07'24.45" (104.123456)

WELL LOCATION PLAT

T8N, R60W, 6th P.M.



NOBLE ENERGY, INC.

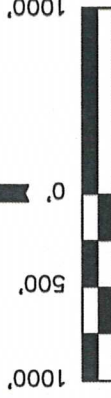
Well location, SHABLE LF07-68HN
(TARGET BOTTOM HOLE), located as shown
in LOT 1 of Section 7, T8N, R60W, 6th
P.M., Weld County, Colorado.

BASIS OF ELEVATION

SPOT ELEVATION LOCATED AT THE NORTHEAST
CORNER OF SECTION 2, T9N, R61W, 6th P.M., TAKEN
FROM THE GROVER SOUTH, QUADRANGLE, COLORADO,
WELD COUNTY, 7.5 MINUTE QUAD (TOPOGRAPHICAL
MAP) PUBLISHED BY THE UNITED STATES
DEPARTMENT OF THE INTERIOR, GEOLOGICAL SURVEY.
SAID ELEVATION IS MARKED AS BEING 5043 FEET.

BASIS OF BEARINGS

BASIS OF BEARINGS IS A G.P.S. OBSERVATION.



SCALE
CERTIFICATE

THIS IS TO CERTIFY THAT THE ABOVE PLAT WAS PREPARED FROM
FIELD NOTES OF ACTUAL SURVEYS MADE BY ME OR UNDER MY
SUPERVISION AND THAT THE SAME ARE TRUE AND CORRECT TO THE
BEST OF MY KNOWLEDGE AND BELIEF.

REGISTERED LAND SURVEYOR
REGISTRATION NO. 17499
STATE OF COLORADO
08-06-12

REVISED: 08-06-12

UINTAH ENGINEERING & LAND SURVEYING
85 SOUTH 200 EAST - VERNAL, UTAH 84078
(435) 789-1017

SCALE 1" = 1000'	DATE SURVEYED: 05-30-12	DATE DRAWN: 07-31-12
PARTY LOREN SHANKS J.W.	REFERENCES G.L.O. PLAT	
WEATHER WARM	FILE NOBLE ENERGY, INC.	

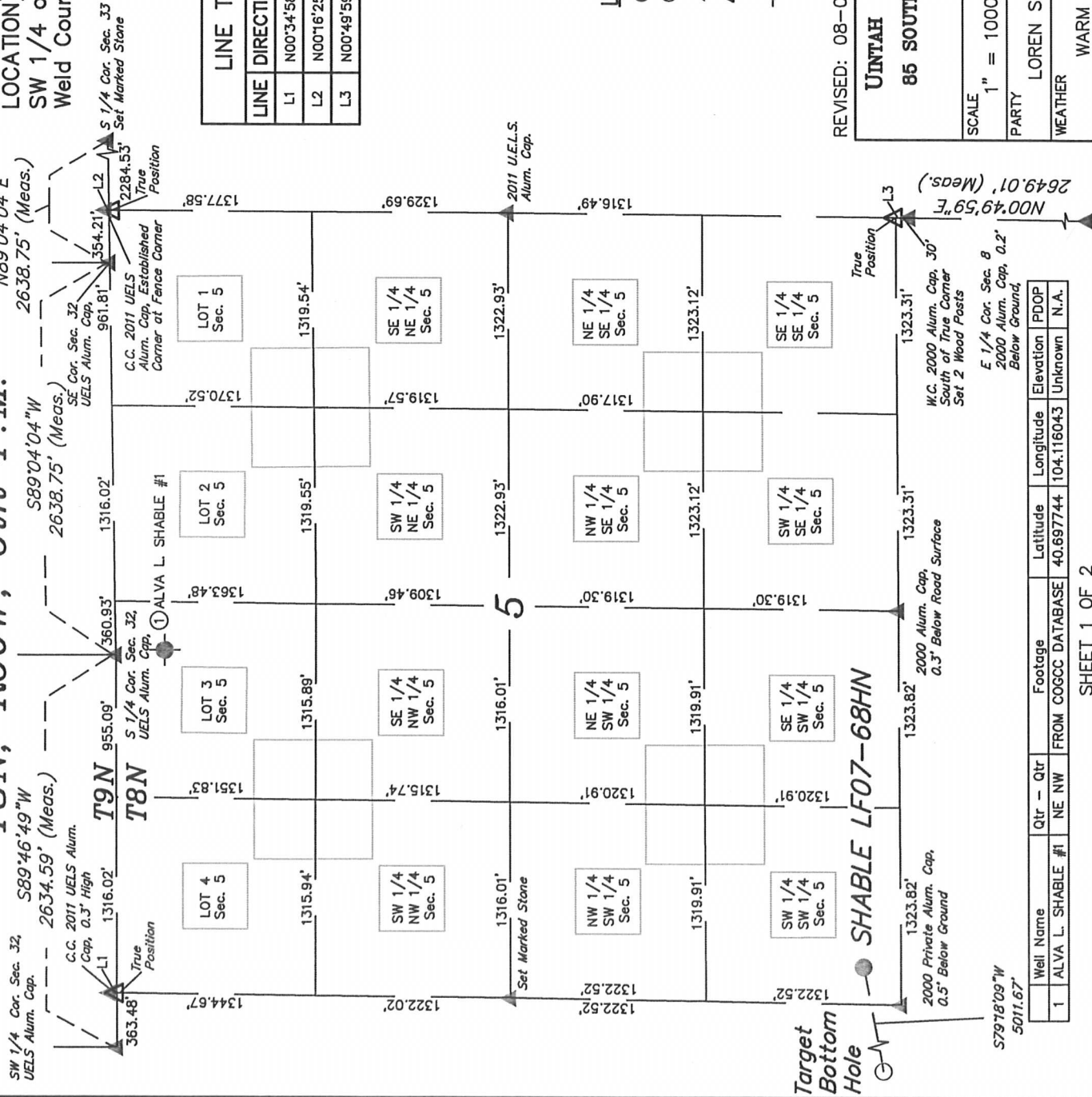
NAD 83 (TARGET BOTTOM HOLE)
LATITUDE = 40°40'55.82" (40.682172)
LONGITUDE = 104°08'28.36" (104.141211)

SITE SKETCH

T8N, R60W, 6th P.M.

NOBLE ENERGY, INC.

Well location, SHABLE LF07-68HN (SURFACE LOCATION), located as shown in the SW 1/4 SW 1/4 of Section 5, T8N, R60W, 6th P.M., Weld County, Colorado.

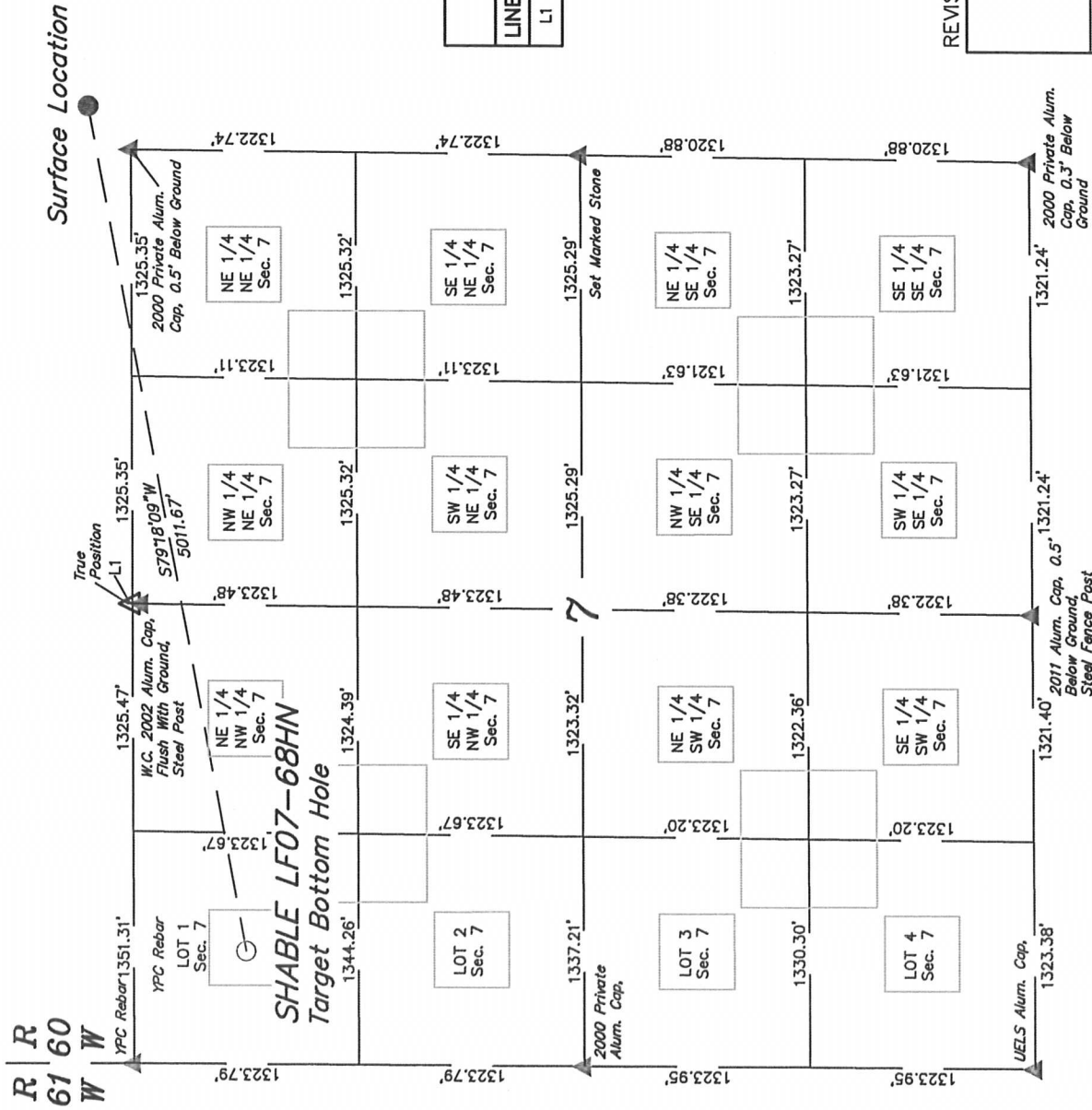


UNTAH ENGINEERING & LAND SURVEYING
85 SOUTH 200 EAST - VERNAL, UTAH 84078
(435) 789-1017

SCALE 1" = 1000'	DATE SURVEYED: 02-25-11	DATE DRAWN: 07-30-12
PARTY LOREN SHANKS J.W.	REFERENCES G.L.O. PLAT	
WEATHER WARM	FILE	NOBLE ENERGY, INC.

NOBLE ENERGY, INC.

Well location, SHABLE LF07-68HN (TARGET BOTTOM HOLE), located as shown in LOT 1 of Section 7, T8N, R60W, 6th P.M., Weld County, Colorado.



NO WELLS WITHIN THIS SECTION

SHEET 2 OF 2

LINE TABLE		
LINE	DIRECTION	LENGTH
L1	N00°37'10"E	30.00'

LEGEND:

- = PROPOSED WELL HEAD.
 ○ = PROPOSED TARGET BOTTOM HOLE
 ▲ = SECTION CORNERS LOCATED
 △ = SECTION CORNERS RE-ESTABLISHED
 (Not Set on Ground.)

REVISÉ: 08-06-12

UNTAH ENGINEERING & LAND SURVEYING
85 SOUTH 200 EAST - VERNAL, UTAH 84078
(435) 789-1017

SCALE	1" = 1000'	DATE SURVEYED:	DATE DRAWN:
PARTY	LOREN SHANKS J.W.	02-25-11	07-30-12
WEATHER	WARM	REFERENCES	
		G.L.O. PLAT	
		FILE	
			NOBLE ENERGY, INC.