

Northern Region Drilling

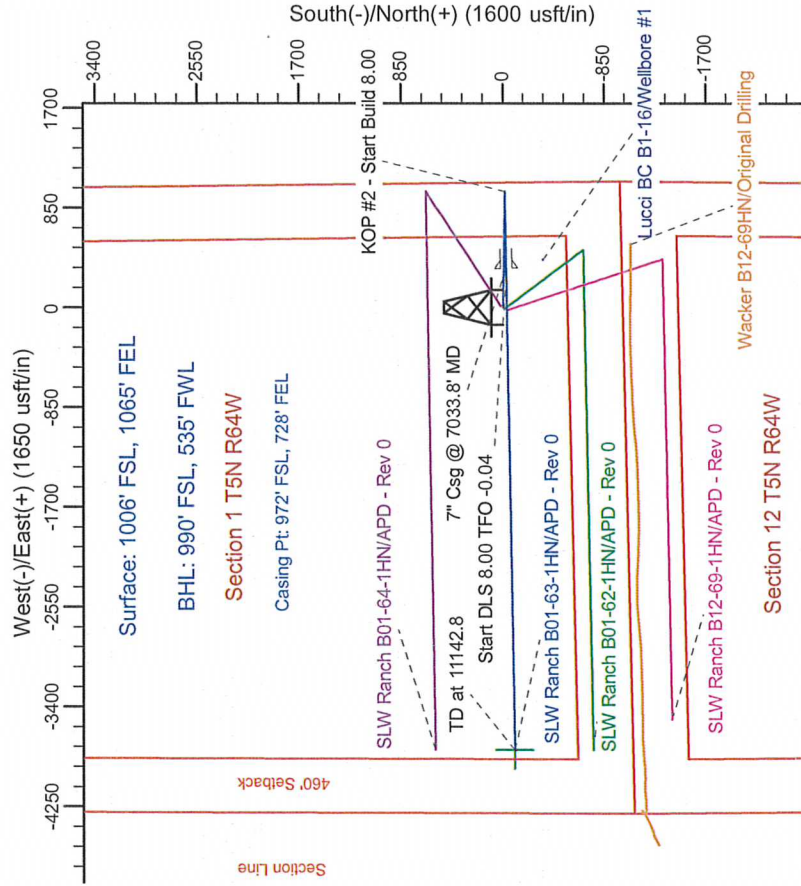
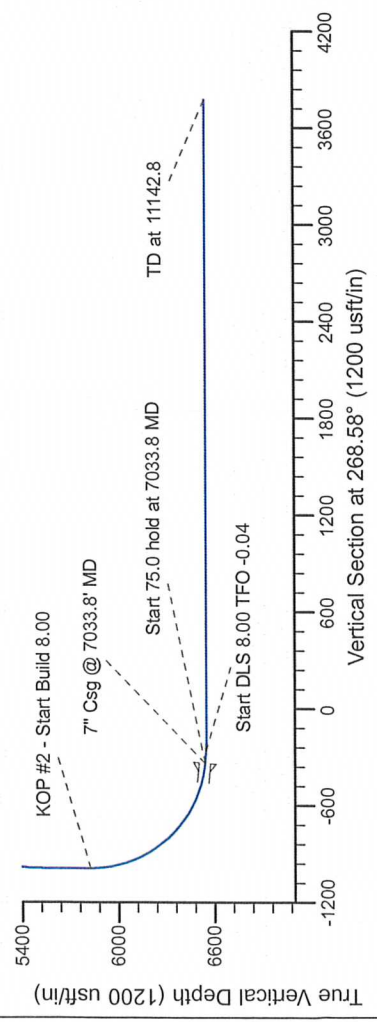
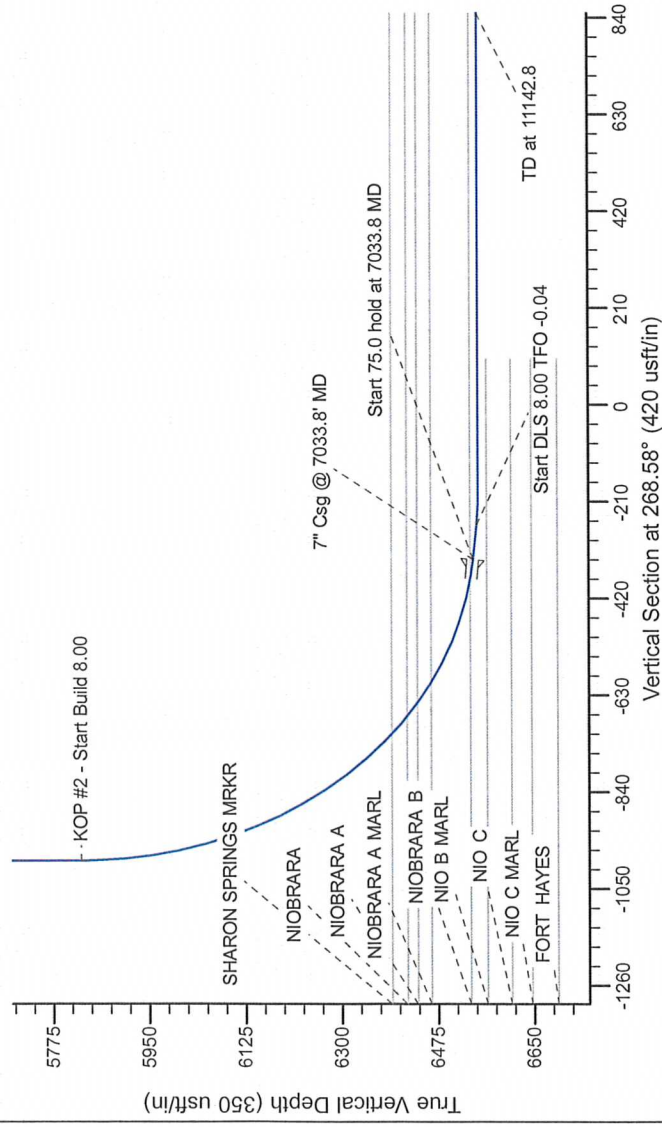
Project: Wattenberg Field
Site: B (Sec.1-T05N-R64W) Weld County, CO
Well: SLW Ranch B01-63-1HN
Wellbore: Original Drilling
Design: APD - Rev 0

Geodetic System: US State Plane 1983
Datum: North American Datum 1983
Ellipsoid: GRS 1980
Zone: Colorado Northern Zone
System Datum: Mean Sea Level

SECTION DETAILS

Sec	MD	Inc	Azi	TVD	+N/-S	+E/-W	Dieg	TFace	VSecl	Target
1	0.0	0.00	0.00	0.0	0.0	0.0	0.00	0.00	0.0	
2	1800.0	0.00	0.00	1800.0	0.0	0.0	0.00	0.00	0.0	
3	2520.9	18.02	90.33	2509.1	-1.8	112.4	2.50	90.33	-112.4	
4	4954.1	18.02	90.33	4860.9	-14.2	877.6	0.00	180.00	-876.9	
5	5715.0	0.00	0.00	5570.0	-16.0	950.0	0.00	180.00	-989.3	
6	5971.3	0.00	0.00	5826.3	-16.0	950.0	0.00	269.07	-335.5	
7	7033.8	85.00	269.07	6539.8	-26.6	336.3	8.00	269.07	-260.8	
8	7108.8	85.00	269.07	6546.3	-27.8	261.6	8.00	-0.04	-198.4	
9	7171.3	90.00	269.07	6549.0	-28.8	199.2	8.00	-0.04	-198.4	
10	11142.8	90.00	269.07	6549.0	-83.6	-3771.8	0.00	0.00	3773.0	

SLW Ranch B01-63-1HN BHL 990'FSL, 535'FWL



T G M

Azimuths to Grid North
True North: -0.65°
Magnetic North: 7.87°

Magnetic Field
Strength: 53077.8snT
Dip Angle: 67.08°
Date: 8/6/2012
Model: IGRF200510

WELL DETAILS: SLW Ranch B01-63-1HN			
North	Ground Level: 4604.0		
1398907.74	East	Latitude	Longitude
3280476.98	40.424030	-104.492560	

Plan: APD - Rev 0 (SLW Ranch B01-63-1HN/Original Drilling)	
Created By: Carrie Willers	Date: 17:19, August 30 2012
Checked:	Date:
Reviewed:	Date:
Approved:	Date: