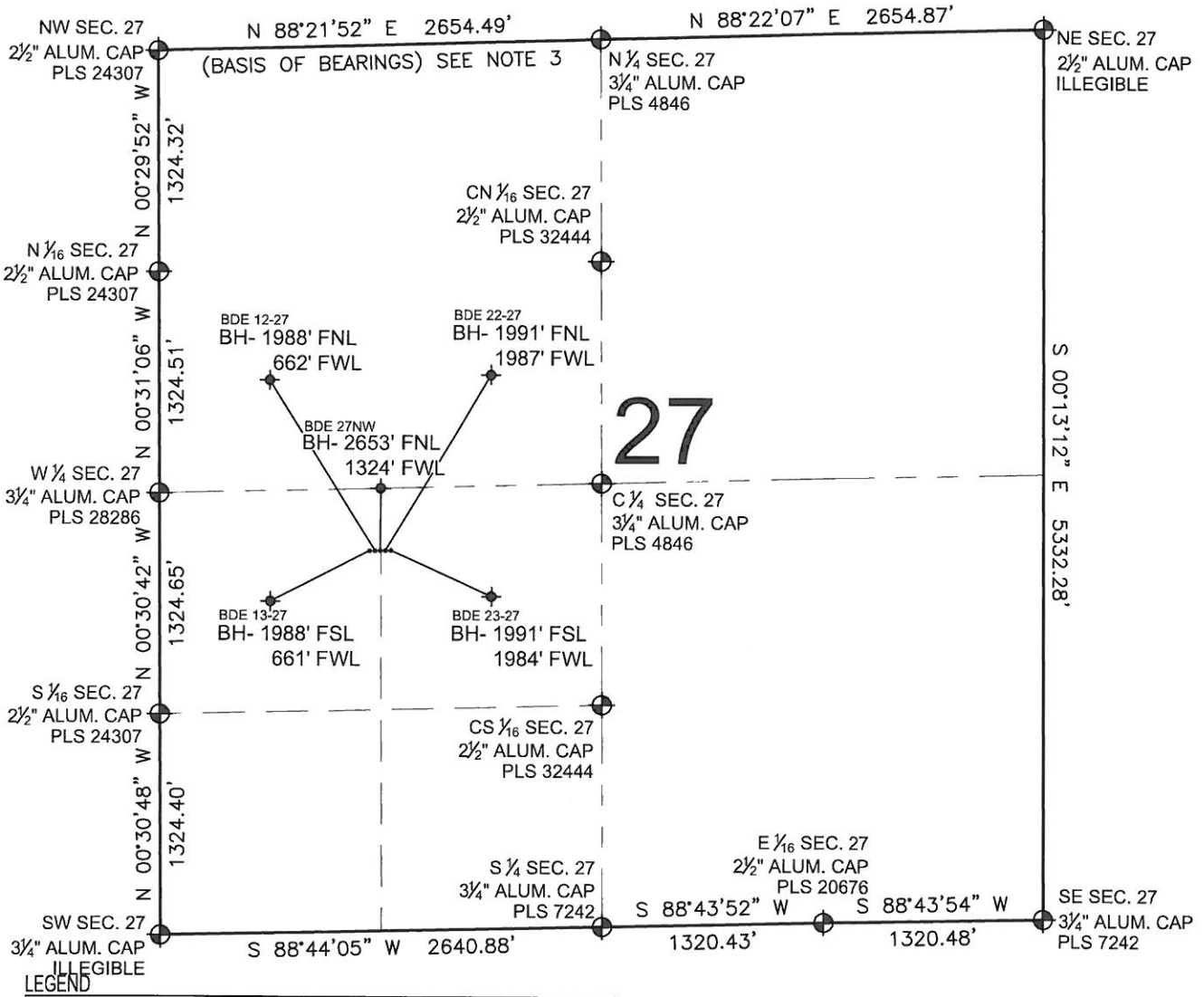


PAD DRAWING: BDE 5 PAD

SECTION 27, TOWNSHIP 4 NORTH, RANGE 68 WEST, 6TH P.M.



- LEGEND**
- ⊕ = EXISTING MONUMENT ◆ = BOTTOM HOLE BH= BOTTOM HOLE
 - = PROPOSED WELL ◆ = EXISTING WELL

- NOTES:**
- THIS FIELD SURVEY CONFORMS TO THE MINIMUM STANDARDS SET BY THE C.O.G.C.C., RULE NO. 215
 - HORIZONTAL POSITIONS AND ORTHOMETRIC ELEVATIONS SHOWN AT THE WELL HEAD, ARE BASED ON GPS-RTK POSITIONS DERIVED FROM MINIMUM 2-HOUR STATIC OBSERVATIONS CORRECTED BY THE NATIONAL GEODETIC SURVEY ONLINE POSITIONING USER SERVICE, O.P.U.S. DATUM: HORIZONTAL = NAD83/2007, VERTICAL = NAVD88
 - THE BASIS OF BEARINGS ARE STATE PLANE COORDINATE SYSTEM GRID BEARINGS SHOWN HEREON BETWEEN THE DESCRIBED MONUMENTS SHOWN HEREON.
 - GRID DISTANCES ARE SHOWN, AS MEASURED IN THE FIELD, WITH TIES TO WELLS MEASURED PERPENDICULAR TO SECTION LINES.

- NOTES:**
- BDE 23-27 TO BE AT 2280' FSL, 1350' FWL.
 - BOTTOM HOLE AT 1991' FSL & 1984' FWL.
 - BDE 22-27 TO BE AT 2280' FSL, 1335' FWL.
 - BOTTOM HOLE AT 1991' FNL & 1987' FWL.
 - BDE 27NW TO BE AT 2280' FSL, 1320' FWL.
 - BOTTOM HOLE AT 2653' FNL & 1324' FWL.
 - BDE 12-27 TO BE AT 2280' FSL, 1305' FWL.
 - BOTTOM HOLE AT 1988' FNL & 662' FWL.
 - BDE 13-27 TO BE AT 2280' FSL, 1290' FWL.
 - BOTTOM HOLE AT 1988' FSL & 661' FWL.

PREPARED BY:



SUNDANCE ENERGY

FIELD DATE:	08-15-12	PAD NAME:	BDE 5 PAD
DRAWING DATE:	08-16-12	SURFACE LOCATION:	WELD COUNTY, COLORADO
BY:	SMF	CHECK:	MLP
N 1/2 SW 1/4, SEC. 27, T4N, R68W, 6TH P.M.			

