

The Road to Excellence Starts with Safety

Sold To #: 300721	Ship To #: 2940653	Quote #:	Sales Order #: 9683412
Customer: WPX ENERGY ROCKY MOUNTAIN LLC-EBUS	Customer Rep: Towers, Ron		
Well Name: RMV	Well #: 103-27	API/UWI #: 05-045-19848	
Field: RULISON	City (SAP): RIFLE	County/Parish: Garfield	State: Colorado
Lat: N 39.49 deg. OR N 39 deg. 29 min. 24.792 secs.	Long: W 107.872 deg. OR W -108 deg. 7 min. 39.083 secs.		
Contractor: NABORS 577	Rig/Platform Name/Num: NABORS 577		
Job Purpose: Cement Surface Casing			
Well Type: Development Well	Job Type: Cement Surface Casing		
Sales Person: MAYO, MARK	Srvc Supervisor: DEUSSEN, EDWARD	MBU ID Emp #: 485182	

Job Personnel

HES Emp Name	Exp Hrs	Emp #	HES Emp Name	Exp Hrs	Emp #	HES Emp Name	Exp Hrs	Emp #
DEUSSEN, EDWARD Eric	10	485182	HAMMOND, DENNIS C	10	287025	SIMINEO, JEROD M	10	479954
WEAVER, CARLTON Russell	10	457698	WOLFE, JON P	10	485217			

Equipment

HES Unit #	Distance-1 way	HES Unit #	Distance-1 way	HES Unit #	Distance-1 way	HES Unit #	Distance-1 way
10565341	60 mile	10784080	60 mile	10871245	60 mile	10973571	60 mile
11164590	60 mile	11360883	60 mile	11583932	60 mile	11808831	60 mile

Job Hours

Date	On Location Hours	Operating Hours	Date	On Location Hours	Operating Hours	Date	On Location Hours	Operating Hours
8/7/2012	10	2.0						

TOTAL Total is the sum of each column separately

Job

Job Times

Formation Name	Top	Bottom	Called Out	Date	Time	Time Zone
Formation Depth (MD)			On Location	07 - Aug - 2012	03:30	MST
Form Type	BHST		Job Started	07 - Aug - 2012	08:00	MST
Job depth MD	1700. ft	Job Depth TVD	Job Completed	07 - Aug - 2012	15:49	MST
Water Depth		Wk Ht Above Floor	Departed Loc	07 - Aug - 2012	16:50	MST
Perforation Depth (MD)	From	To		07 - Aug - 2012	18:15	MST

Well Data

Description	New / Used	Max pressure psig	Size in	ID in	Weight lbm/ft	Thread	Grade	Top MD ft	Bottom MD ft	Top TVD ft	Bottom TVD ft
OPEN HOLE				13.5				.	1715.		
SURFACE CASING	Unknown		9.625	9.001	32.3		H-40	.	1700.		

Tools and Accessories

Type	Size	Qty	Make	Depth	Type	Size	Qty	Make	Depth	Type	Size	Qty	Make
Guide Shoe					Packer					Top Plug	9 5/8	1	HES
Float Shoe					Bridge Plug					Bottom Plug			
Float Collar					Retainer					SSR plug set			
Insert Float										Plug Container	9 5/8	1	HES
Stage Tool										Centralizers			

Miscellaneous Materials

Gelling Agt	Conc	Surfactant	Conc	Acid Type	Qty	Conc	%
Treatment Fld	Conc	Inhibitor	Conc	Sand Type	Size	Qty	

Fluid Data

Stage/Plug #: 1	Fluid #	Stage Type	Fluid Name	Qty	Qty uom	Mixing Density lbm/gal	Yield ft3/sk	Mix Fluid Gal/sk	Rate bbl/min	Total Mix Fluid Gal/sk
-----------------	---------	------------	------------	-----	---------	------------------------	--------------	------------------	--------------	------------------------

Stage/Plug #: 1									
Fluid #	Stage Type	Fluid Name	Qty	Qty uom	Mixing Density lbm/gal	Yield ft ³ /sk	Mix Fluid Gal/sk	Rate bbl/min	Total Mix Fluid Gal/sk
1	Fresh Water		20.00	bbl	8.33	.0	.0	6.0	
2	Lead Cement	VERSACEM (TM) SYSTEM (452010)	230.0	sacks	12.3	2.38	13.75	8.0	13.75
3	Tail Cement	VERSACEM (TM) SYSTEM (452010)	160.0	sacks	12.8	2.11	11.75	8.0	11.75
4	Displacement Fluid		130.00	bbl	8.34	.0	.0	10.0	
Calculated Values		Pressures		Volumes					
Displacement	130.4	Shut In: Instant		Lost Returns	0	Cement Slurry	157.6	Pad	
Top Of Cement	SURFACE	5 Min		Cement Returns	15	Actual Displacement	130.4	Treatment	
Frac Gradient		15 Min		Spacers	20	Load and Breakdown		Total Job	308
Rates									
Circulating		Mixing	8	Displacement	10	Avg. Job	9		
Cement Left In Pipe	Amount	43 ft	Reason	Shoe Joint					
Frac Ring # 1 @	ID	Frac ring # 2 @	ID	Frac Ring # 3 @	ID	Frac Ring # 4 @	ID		
The Information Stated Herein Is Correct				Customer Representative Signature					

The Road to Excellence Starts with Safety

Sold To #: 300721	Ship To #: 2940653	Quote #:	Sales Order #: 9683412
Customer: WPX ENERGY ROCKY MOUNTAIN LLC-EBUS	Customer Rep: Towers, Ron		
Well Name: RMV	Well #: 103-27	API/UWI #: 05-045-19848	
Field: RULISON	City (SAP): RIFLE	County/Parish: Garfield	State: Colorado
Legal Description:			
Lat: N 39.49 deg. OR N 39 deg. 29 min. 24.792 secs.		Long: W 107.872 deg. OR W -108 deg. 7 min. 39.083 secs.	
Contractor: NABORS 577	Rig/Platform Name/Num: NABORS 577		
Job Purpose: Cement Surface Casing	Ticket Amount:		
Well Type: Development Well	Job Type: Cement Surface Casing		
Sales Person: MAYO, MARK	Srv Supervisor: DEUSSEN, EDWARD	MBU ID Emp #: 485182	

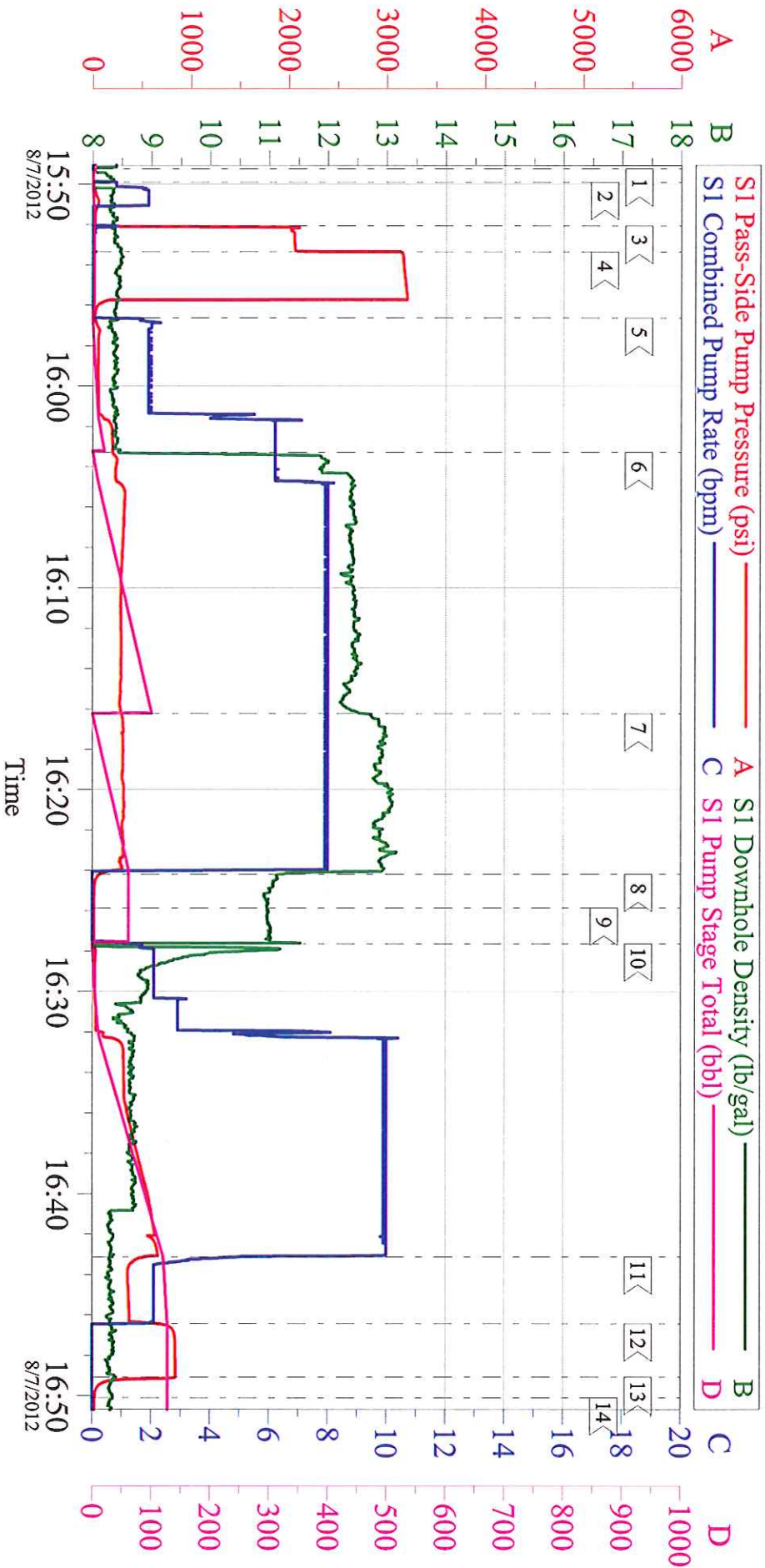
Activity Description	Date/Time	Cht #	Rate bbl/min	Volume bbl		Pressure psig		Comments
				Stage	Total	Tubing	Casing	
Call Out	08/07/2012 03:30							
Pre-Convoy Safety Meeting	08/07/2012 05:45							
Crew Leave Yard	08/07/2012 06:00							1 ELITE, 2 660s, 1 PICKUP
Arrive At Loc	08/07/2012 08:00							RIG STILL PULLING DRILL PIPE
Assessment Of Location Safety Meeting	08/07/2012 09:00							
Pre-Rig Up Safety Meeting	08/07/2012 14:15							
Rig-Up Equipment	08/07/2012 14:30							1 HARD LINE TO FLOOR, 2 WATER LINES TO UPRIGHT AND DAY TANK, 2 BULK HOSES TO 660s
Circulate Well	08/07/2012 14:45							CIRCULATE FOR 1 HOUR PRIOR TO CEMENT - VISCOSITY 90
Pre-Job Safety Meeting	08/07/2012 15:30							
Start Job	08/07/2012 15:49							TD 1715, TP 1700, SJ 43, MW 10.2, OH 13 1/2, CSG 9 5/8", 32.3#
Pump Water	08/07/2012 15:49		2	2			53.0	FILL LINES
Pressure Test	08/07/2012 15:53							PRESSURED UP TO 3165 PSI - PRESSURE HELD WELL
Pump Spacer 1	08/07/2012 15:56		6	20			221.0	FRESH WATER SPACER
Pump Lead Cement	08/07/2012 16:03		8	97.5			326.0	230 SKS, 12.3 PPG, 2.38 YIELD, 13.75 GAL/SK

Cementing Job Log

Activity Description	Date/Time	Cht #	Rate bbl/min	Volume bbl		Pressure psig		Comments
				Stage	Total	Tubing	Casing	
Pump Tail Cement	08/07/2012 16:16		8	60.1			321.0	160 SKS, 12.8 PPG, 2.11 YIELD, 11.75 GAL/SK
Shutdown	08/07/2012 16:24							
Drop Top Plug	08/07/2012 16:25							
Pump Displacement	08/07/2012 16:27		10	130.4			662.0	FRESH WATER
Slow Rate	08/07/2012 16:43		2	10			348.0	
Bump Plug	08/07/2012 16:46						382.0	PRESSURED UP TO 867 PSI
Check Floats	08/07/2012 16:49							FLOATS HELD - GOT 1/2 BBL BACK
End Job	08/07/2012 16:50							GOT 15 BBLS CEMENT TO SURFACE / USED 40 LBS SUGAR
Post-Job Safety Meeting (Pre Rig-Down)	08/07/2012 17:15							
Rig-Down Equipment	08/07/2012 17:30							
Pre-Convoy Safety Meeting	08/07/2012 18:00							
Crew Leave Location	08/07/2012 18:15							
Other	08/07/2012 18:16							THANK YOU FOR USING HALLIBURTON AND ED DEUSSEN AND CREW

WPX - RMV 103-27

9 5/8 SURFACE



Customer: WPX
Well Description: RMV 103-27
Company Rep: RON TOWERS

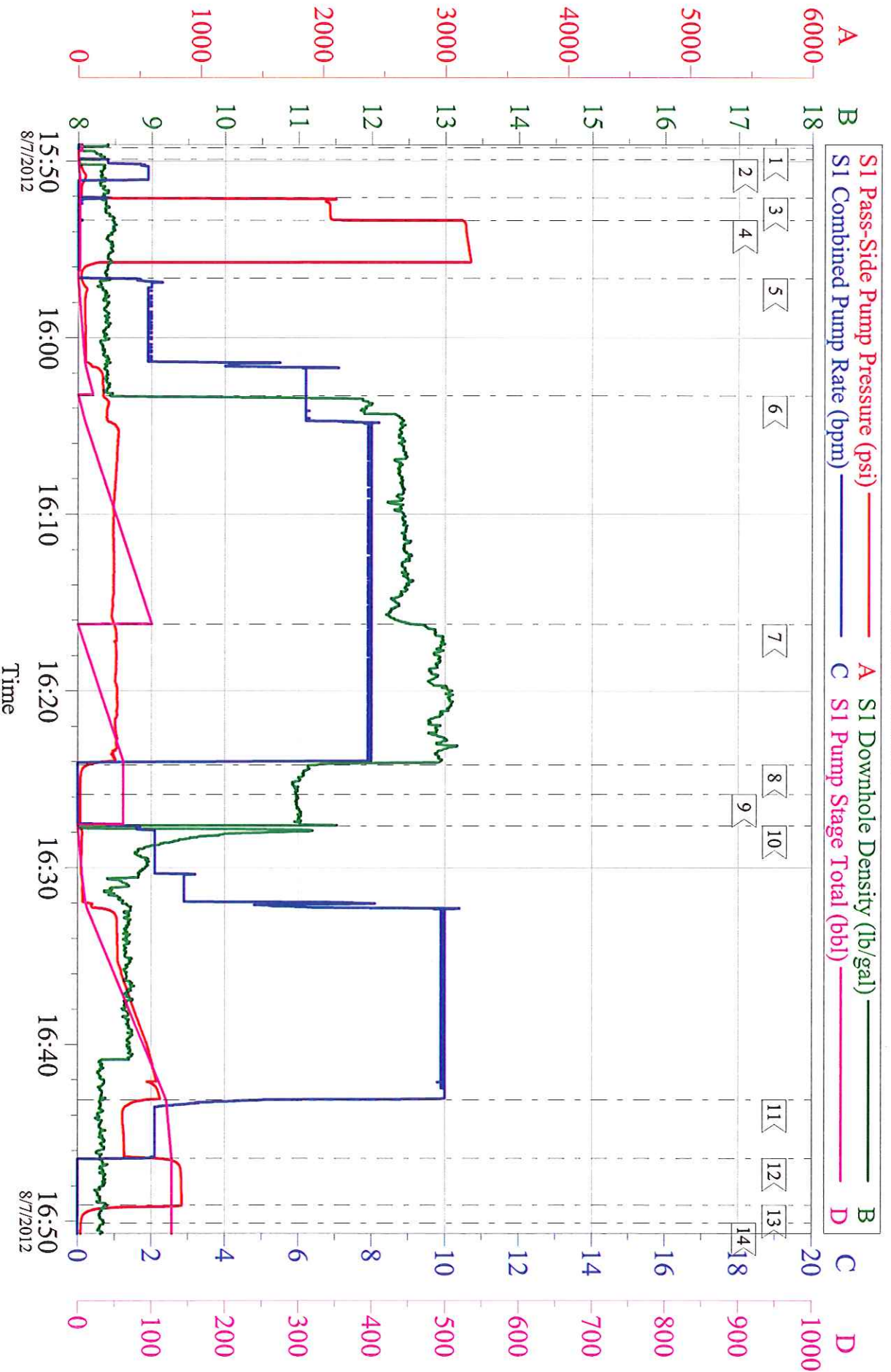
Job Date: 07-Aug-2012
Job Type: SURFACE
Cement Supervisor: ED DEUSSEN

Sales Order #: 9683412
ADC Used: YES
Elite #: RUSTY WEAVER

OptiCem v6.4.10
07-Aug-12 17:01

WPX - RMV 103-27

9 5/8 SURFACE



Customer: WPX
Well Description: RMV 103-27
Company Rep: RON TOWERS

Job Date: 07-Aug-2012
Job Type: SURFACE
Cement Supervisor: ED DEUSSEN

Sales Order #: 9683412
ADC Used: YES
Elite #: RUSTY WEAVER

OptiCem v6.4.10
07-Aug-12 17:01