



Cementing Job Summary

The Road to Excellence Starts with Safety

Sold To #: 300721	Ship To #: 2939074	Quote #:	Sales Order #: 9664927
Customer: WPX ENERGY ROCKY MOUNTAIN LLC-EBUS		Customer Rep: Wilson, W.C.	
Well Name: RWF	Well #: 321-34	API/UWI #: 05-045-19842	
Field: RULISON	City (SAP): RIFLE	County/Parish: Garfield	State: Colorado
Lat: N 39.49 deg. OR N 39 deg. 29 min. 24.666 secs.		Long: W 107.872 deg. OR W -108 deg. 7 min. 39.097 secs.	
Contractor: NABORS 577	Rig/Platform Name/Num: NABORS 577		
Job Purpose: Cement Surface Casing			
Well Type: Development Well		Job Type: Cement Surface Casing	
Sales Person: MAYO, MARK	Srvs Supervisor: DEUSSEN, EDWARD	MBU ID Emp #: 485182	

Job Personnel

HES Emp Name	Exp Hrs	Emp #	HES Emp Name	Exp Hrs	Emp #	HES Emp Name	Exp Hrs	Emp #
ANDERSON, ADAM S	0.0	456683	BURKE, BRENDAN Patrick	0.0	487782	DEUSSEN, EDWARD Eric	0.0	485182
DOUT, JACOB J	0.0	430298						

Equipment

HES Unit #	Distance-1 way	HES Unit #	Distance-1 way	HES Unit #	Distance-1 way	HES Unit #	Distance-1 way
10867423	60 mile	10872429	60 mile	11259885	60 mile	11562538	60 mile
11808847	60 mile						

Job Hours

[illegible]

TOTAL	<i>Total is the sum of each column separately</i>			
--------------	---	--	--	--

Job

Job Times

Formation Name							Date	Time	Time Zone
Formation Depth (MD)	Top			Bottom		Called Out	20 - Jul - 2012	07:00	MST
Form Type			BHST			On Location	20 - Jul - 2012	10:45	MST
Job depth MD	1183.2 ft		Job Depth TVD		1183.2 ft	Job Started	21 - Jul - 2012	02:42	MST
Water Depth			Wk Ht Above Floor		4. ft	Job Completed	21 - Jul - 2012	03:41	MST
Perforation Depth (MD)	From			To		Departed Loc	21 - Jul - 2012	04:30	MST

Well Data

Description	New / Used	Max pressure psig	Size in	ID in	Weight lbm/ft	Thread	Grade	Top MD ft	Bottom MD ft	Top TVD ft	Bottom TVD ft
OPEN HOLE				13.5				.	1200.		
SURFACE CASING	Unknown		9.625	9.001	32.3		H-40	.	1183.2		

Sales/Rental/3rd Party (HES)

Description	Qty	Qty uom	Depth	Supplier
PLUG,CMTG,TOP,9 5/8,HWE,8.16 MIN/9.06 MA	1	EA		

Tools and Accessories

Type	Size	Qty	Make	Depth	Type	Size	Qty	Make	Depth	Type	Size	Qty	Make
Guide Shoe					Packer					Top Plug			
Float Shoe					Bridge Plug					Bottom Plug			
Float Collar					Retainer					SSR plug set			
Insert Float										Plug Container			
Stage Tool										Centralizers			

Miscellaneous Materials

Gelling Agt	Conc	Surfactant	Conc	Acid Type	Qty	Conc	%
Treatment Fld	Conc	Inhibitor	Conc	Sand Type	Size	Qty	

Fluid Data

Stage/Plug #: 1	Field Data
-----------------	------------

Cementing Job Summary

Fluid #	Stage Type	Fluid Name	Qty	Qty uom	Mixing Density lbm/gal	Yield ft ³ /sk	Mix Fluid Gal/sk	Rate bbl/min	Total Mix Fluid Gal/sk
1	Fresh Water		20.00	bbl	8.33	.0	.0	.0	
2	Lead Cement	VERSACEM (TM) SYSTEM (452010)	160.0	sacks	12.3	2.38	13.75		13.75
	13.75 Gal	FRESH WATER							
3	Tail Cement	VERSACEM (TM) SYSTEM (452010)	160.0	sacks	12.8	2.11	11.75		11.75
	11.75 Gal	FRESH WATER							
4	Displacement Fluid		91.00	bbl	8.34	.0	.0	.0	
Calculated Values		Pressures		Volumes					
Displacement		Shut In: Instant		Lost Returns		Cement Slurry		Pad	
Top Of Cement		5 Min		Cement Returns		Actual Displacement		Treatment	
Frac Gradient		15 Min		Spacers		Load and Breakdown		Total Job	
Rates									
Circulating		Mixing		Displacement		Avg. Job			
Cement Left In Pipe	Amount	29.9 ft	Reason	Shoe Joint					
Frac Ring # 1 @	ID		Frac ring # 2 @	ID		Frac Ring # 3 @	ID		Frac Ring # 4 @
The Information Stated Herein Is Correct				Customer Representative Signature					

The Road to Excellence Starts with Safety

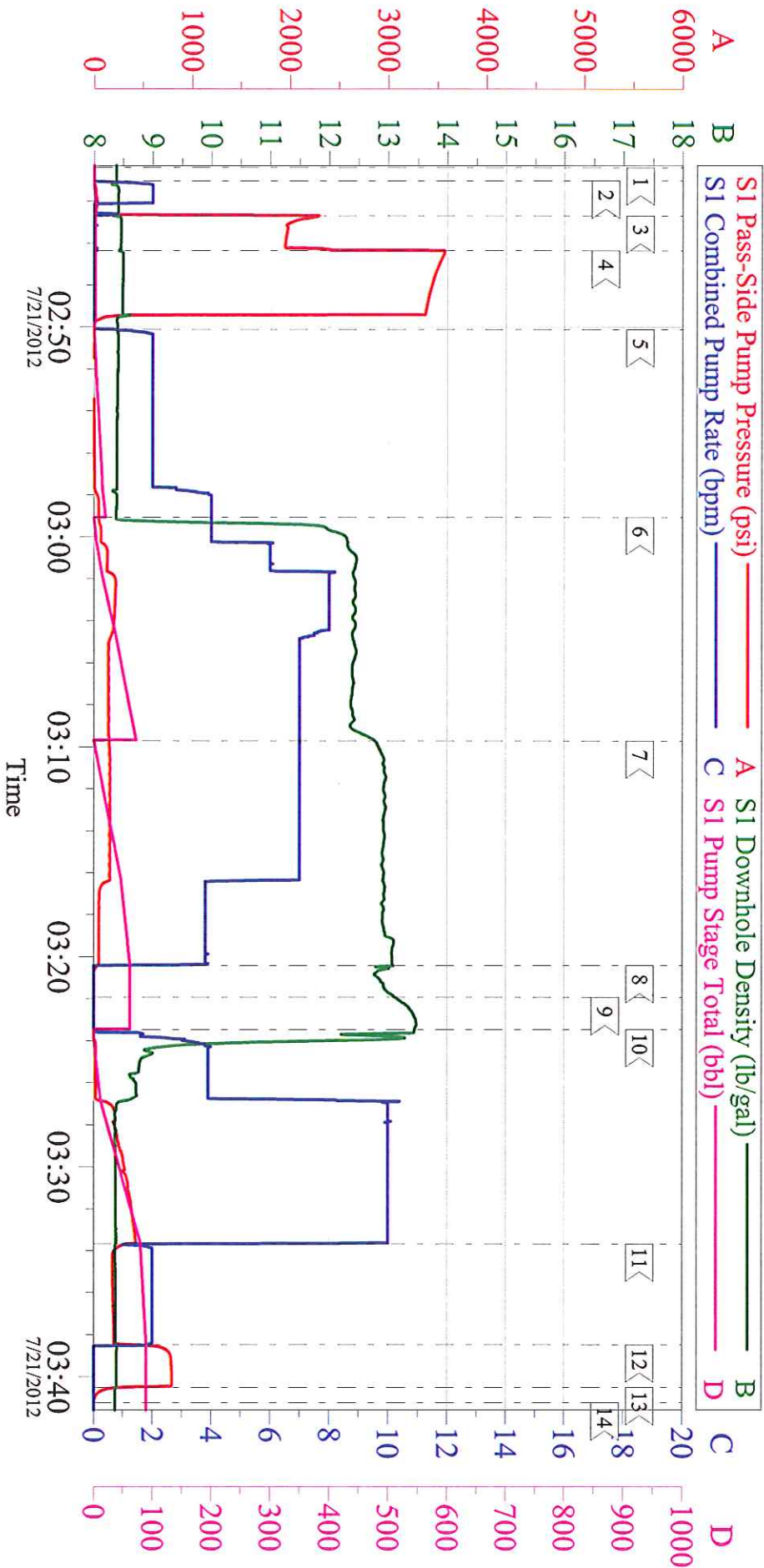
Sold To #: 300721	Ship To #: 2939074	Quote #:	Sales Order #: 9664927
Customer: WPX ENERGY ROCKY MOUNTAIN LLC-EBUS	Customer Rep: Wilson, W.C.		
Well Name: RWF	Well #: 321-34	API/UWI #: 05-045-19842	
Field: RULISON	City (SAP): RIFLE	County/Parish: Garfield	State: Colorado
Legal Description:			
Lat: N 39.49 deg. OR N 39 deg. 29 min. 24.666 secs.		Long: W 107.872 deg. OR W -108 deg. 7 min. 39.097 secs.	
Contractor: NABORS 577	Rig/Platform Name/Num: NABORS 577		
Job Purpose: Cement Surface Casing	Ticket Amount:		
Well Type: Development Well	Job Type: Cement Surface Casing		
Sales Person: MAYO, MARK	Srvc Supervisor: DEUSSEN, EDWARD	MBU ID Emp #: 485182	

Activity Description	Date/Time	Cht #	Rate bbl/min	Volume bbl		Pressure psig		Comments
				Stage	Total	Tubing	Casing	
Call Out	07/20/2012 19:00							
Pre-Convoy Safety Meeting	07/20/2012 21:15							
Crew Leave Yard	07/20/2012 21:30							1 ELITE, 1 660, 1 PICKUP
Arrive At Loc	07/20/2012 22:45							RIG JUST STARTING TO RUN CASING
Assessment Of Location Safety Meeting	07/21/2012 00:15							
Pre-Rig Up Safety Meeting	07/21/2012 01:15							
Rig-Up Equipment	07/21/2012 01:30							1 HARD LINE TO FLOOR, 2 WATER LINES TO UPRIGHT AND DAY TANK, 1 BULK HOSE
Pre-Job Safety Meeting	07/21/2012 02:30							
Start Job	07/21/2012 02:42							TD 1200, TP 1183.2, SJ 29.92, MW 10.2, OH 13 1/2, CSG 9 5/8", 32.3#
Pump Water	07/21/2012 02:43		2	2			35.0	FILL LINES
Pressure Test	07/21/2012 02:46							TEST TO 3550 PSI - HELD WEEL FOR 2 MINUTES
Pump Spacer 1	07/21/2012 02:50		4	20			51.0	FRESH WATER SPACER
Pump Lead Cement	07/21/2012 02:59		8	67.8			222.0	160 SKS, 12.3 PPG, 2.38 YIELD, 13.75 GAL/SK
Pump Tail Cement	07/21/2012 03:09		7	60.1			170.0	160 SKS, 12.8 PPG, 2.11 YIELD, 11.75 GAL/SK

Cementing Job Log

Activity Description	Date/Time	Cht #	Rate bbl/ min	Volume bbl		Pressure psig		Comments
				Stage	Total	Tubing	Casing	
Shutdown	07/21/2012 03:20							
Drop Top Plug	07/21/2012 03:21							
Pump Displacement	07/21/2012 03:23		10	90.8			430.0	FRESH WATER WITH SODIUM BICARBONATE SUPPLIED BY RIG - 50 LBS IN FIRST 10 BBLS
Slow Rate	07/21/2012 03:33		2	10			220.0	
Bump Plug	07/21/2012 03:38						242.0	PRESSURED UP TO 798 PSI
Check Floats	07/21/2012 03:40							FLOATS HELD - GOT 1/2 BBL BACK
End Job	07/21/2012 03:41							GOT 22 BBLS CEMENT TO SURFACE / USED 40 LBS SUGAR
Post-Job Safety Meeting (Pre Rig-Down)	07/21/2012 03:45							
Rig-Down Equipment	07/21/2012 04:00							
Pre-Convoy Safety Meeting	07/21/2012 04:20							
Crew Leave Location	07/21/2012 04:30							
Other	07/21/2012 04:31							THANK YOU FOR USING HALLIBURTON AND ED DEUSSEN AND CREW

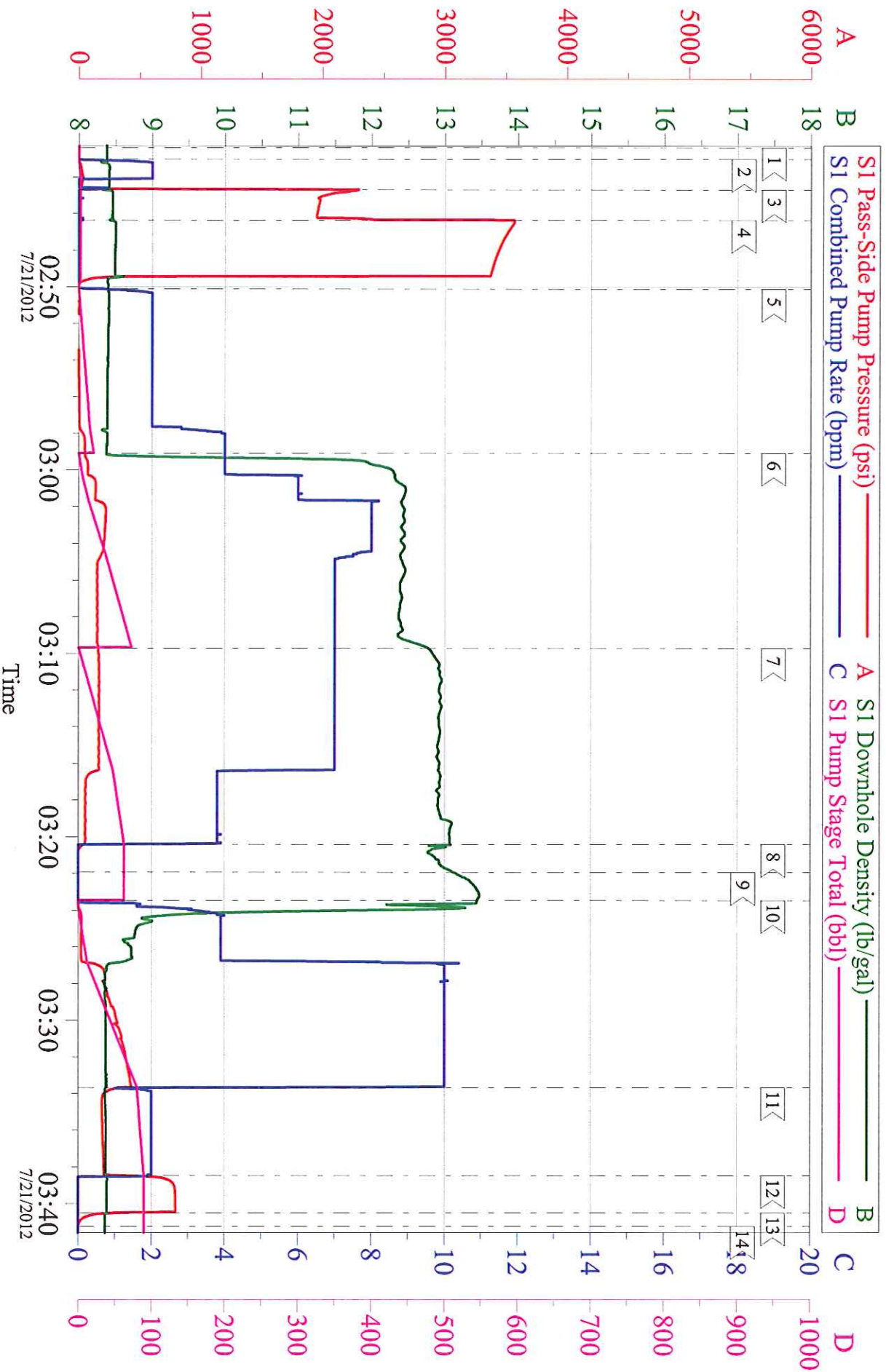
WPX - RWF 321-34 9 5/8 SURFACE



Customer: WPX	Job Date: 21-Jul-2012	Sales Order #: 9664927
Well Description: RWF 321-34	Job Type: SURFACE	ADC Used: YES
Company Rep: W.C. WILSON	Cement Supervisor: ED DEUSSEN	Elite #: BRENDAN BURKE

OptiCem v6.4.10
21-Jul-12 03:46

WPX - RWF 321-34 9 5/8 SURFACE



Customer: WPX	Job Date: 21-Jul-2012	Sales Order #: 9664927
Well Description: RWF 321-34	Job Type: SURFACE	ADC Used: YES
Company Rep: W.C. WILSON	Cement Supervisor: ED DEUSSEN	Elite #: BRENDAN BURKE

OptiCem v6.4.10
21-Jul-12 03:47