

The Road to Excellence Starts with Safety

Sold To #: 300721	Ship To #: 2949276	Quote #:	Sales Order #: 9788263
Customer: WPX ENERGY ROCKY MOUNTAIN LLC-EBUS	Customer Rep: Towers, Ron		
Well Name: RMV	Well #: 80-34	API/UWI #: 05-045-19834	
Field: RULISON	City (SAP): RIFLE	County/Parish: Garfield	State: Colorado
Lat: N 39.49 deg. OR N 39 deg. 29 min. 24.986 secs.	Long: W 107.872 deg. OR W -108 deg. 7 min. 39.371 secs.		
Contractor: NABORS 577	Rig/Platform Name/Num: NABORS 577		
Job Purpose: Cement Surface Casing			
Well Type: Development Well	Job Type: Cement Surface Casing		
Sales Person: MAYO, MARK	Srv Supervisor: CASTILLO, FRANCISCO	MBU ID Emp #: 513620	

Job Personnel

HES Emp Name	Exp Hrs	Emp #	HES Emp Name	Exp Hrs	Emp #	HES Emp Name	Exp Hrs	Emp #
ANGLESTEIN, TROY Edward WM	4	436099	BANKS, BRENT A	4	371353	CASTILLO, FRANCISCO P	4	513620
CASTILLO, FRANCISCO P	4	513620	LINN, PAUL Andrew	4	479143			

Equipment

HES Unit #	Distance-1 way	HES Unit #	Distance-1 way	HES Unit #	Distance-1 way	HES Unit #	Distance-1 way
10616651C	60 mile	10867322	60 mile	10951249	60 mile	10998512	60 mile
11808827	60 mile						

Job Hours

Date	On Location Hours	Operating Hours	Date	On Location Hours	Operating Hours	Date	On Location Hours	Operating Hours
9/12/12	4	1						
TOTAL	4		Total is the sum of each column separately					

Job

Job Times

Formation Name	Top	SURFACE	Bottom	1175	Called Out	Date	Time	Time Zone
Formation Depth (MD)					On Location	12 - Sep - 2012	08:30	MST
Form Type		BHST			Job Started	12 - Sep - 2012	11:35	MST
Job depth MD	11750. ft	Job Depth TVD	. ft		Job Completed	12 - Sep - 2012	12:28	MST
Water Depth		Wk Ht Above Floor	3. ft		Departed Loc	12 - Sep - 2012	13:45	MST
Perforation Depth (MD)	From		To					

Well Data

Description	New / Used	Max pressure psig	Size in	ID in	Weight lbm/ft	Thread	Grade	Top MD ft	Bottom MD ft	Top TVD ft	Bottom TVD ft
-------------	------------	-------------------	---------	-------	---------------	--------	-------	-----------	--------------	------------	---------------

Sales/Rental/3rd Party (HES)

Description	Qty	Qty uom	Depth	Supplier
PLUG,CMTG,TOP,9 5/8,HWE,8.16 MIN/9.06 MA	1	EA	1117	HES

Tools and Accessories

Type	Size	Qty	Make	Depth	Type	Size	Qty	Make	Depth	Type	Size	Qty	Make
Guide Shoe					Packer					Top Plug	9.625	1	HES
Float Shoe	9.625	1		1160	Bridge Plug					Bottom Plug			
Float Collar	9.625	1		1117	Retainer					SSR plug set			
Insert Float										Plug Container	9.625	1	HES
Stage Tool										Centralizers			

Miscellaneous Materials

Gelling Agt	Conc	Surfactant	Conc	Acid Type	Qty	Conc	%
Treatment Fld	Conc	Inhibitor	Conc	Sand Type	Size	Qty	

Fluid Data

Stage/Plug #: 1	Fluid Name	Qty	Qty uom	Mixing Density lbm/gal	Yield ft ³ /sk	Mix Fluid Gal/sk	Rate bbl/min	Total Mix Fluid Gal/sk
Fluid #	Stage Type							

HALLIBURTON***Cementing Job Summary***

1	Water Spacer		20.00	bbl	8.33	.0	.0	6	
2	Lead Cement	VERSACEM (TM) SYSTEM (452010)	160.0	sacks	12.3	2.38	13.75	8	13.75
3	Tail Cement	VERSACEM (TM) SYSTEM (452010)	160.0	sacks	12.8	2.11	11.75	8	11.75
4	Displacement		80.00	bbl	8.33	.0	.0	10	
Calculated Values		Pressures		Volumes					
Displacement	10	Shut In: Instant		Lost Returns	NONE	Cement Slurry	128	Pad	
Top Of Cement	SURFACE	5 Min		Cement Returns	10	Actual Displacement	88	Treatment	
Frac Gradient		15 Min		Spacers	20	Load and Breakdown		Total Job	228
Rates									
Circulating	RIG	Mixing	8	10			Avg. Job	8.5	
Cement Left In Pipe	Amount	43 ft	Reason	Shoe Joint					
Frac Ring # 1 @	ID		Frac ring # 2 @	ID		Frac Ring # 3 @	ID		Frac Ring # 4 @
The Information Stated Herein Is Correct				Customer Representative Signature					

The Road to Excellence Starts with Safety

Sold To #: 300721	Ship To #: 2949276	Quote #:	Sales Order #: 9788263
Customer: WPX ENERGY ROCKY MOUNTAIN LLC-EBUS	Customer Rep: Towers, Ron		
Well Name: RMV	Well #: 80-34	API/UWI #: 05-045-19834	
Field: RULISON	City (SAP): RIFLE	County/Parish: Garfield	State: Colorado
Legal Description:			
Lat: N 39.49 deg. OR N 39 deg. 29 min. 24.986 secs.		Long: W 107.872 deg. OR W -108 deg. 7 min. 39.371 secs.	
Contractor: NABORS 577	Rig/Platform Name/Num: NABORS 577		
Job Purpose: Cement Surface Casing		Ticket Amount:	
Well Type: Development Well	Job Type: Cement Surface Casing		
Sales Person: MAYO, MARK	Srv Supervisor: CASTILLO, FRANCISCO	MBU ID Emp #: 513620	

Activity Description	Date/Time	Cht #	Rate bbl/min	Volume bbl		Pressure psig		Comments
				Stage	Total	Tubing	Casing	
Pre-Convoy Safety Meeting	09/12/2012 06:15							ALL HES PERSONEL
Crew Leave Yard	09/12/2012 06:30							
Arrive At Loc	09/12/2012 08:30							
Assessment Of Location Safety Meeting	09/12/2012 08:45							ALL HES PERSONEL
Rig-Up Equipment	09/12/2012 09:00							
Pre-Job Safety Meeting	09/12/2012 11:15							ALL HES PERSONEL AND RIG CREW
Start Job	09/12/2012 11:35							TD-1175', TP-1160.6', SJ-43.56', FC-1117.04', MUD WEIGHT 10 PPG, FV-79, PV-42, YP-50, pH-10.5, TEMP @ 96 deg.
Other	09/12/2012 11:35		2	2			52.0	FILL LINES
Other	09/12/2012 11:37		0.5	0.5				5TH GEAR STALL OUT/PRESSURE HELD AT 1263 PSI
Pressure Test	09/12/2012 11:39		0.5	0.5				ALL LINES HELD PRESSURE AT 3336 PSI
Pump Spacer 1	09/12/2012 11:43		6	20			274.0	FRESH WATER
Pump Lead Cement	09/12/2012 11:51		8	68			345.0	160SKS AT 12.3PPG, YEILD 2.38, GPS 13.75/ SETUP TIME 2:38HRS @ 70 BC
Activity Description	Date/Time	Cht #	Rate bbl/min	Volume bbl		Pressure psig		Comments
				Stage	Total	Tubing	Casing	

Sold To #: 300721

Ship To #: 2949276

Quote #:

Sales Order #:

9788263

SUMMIT Version: 7.3.0040

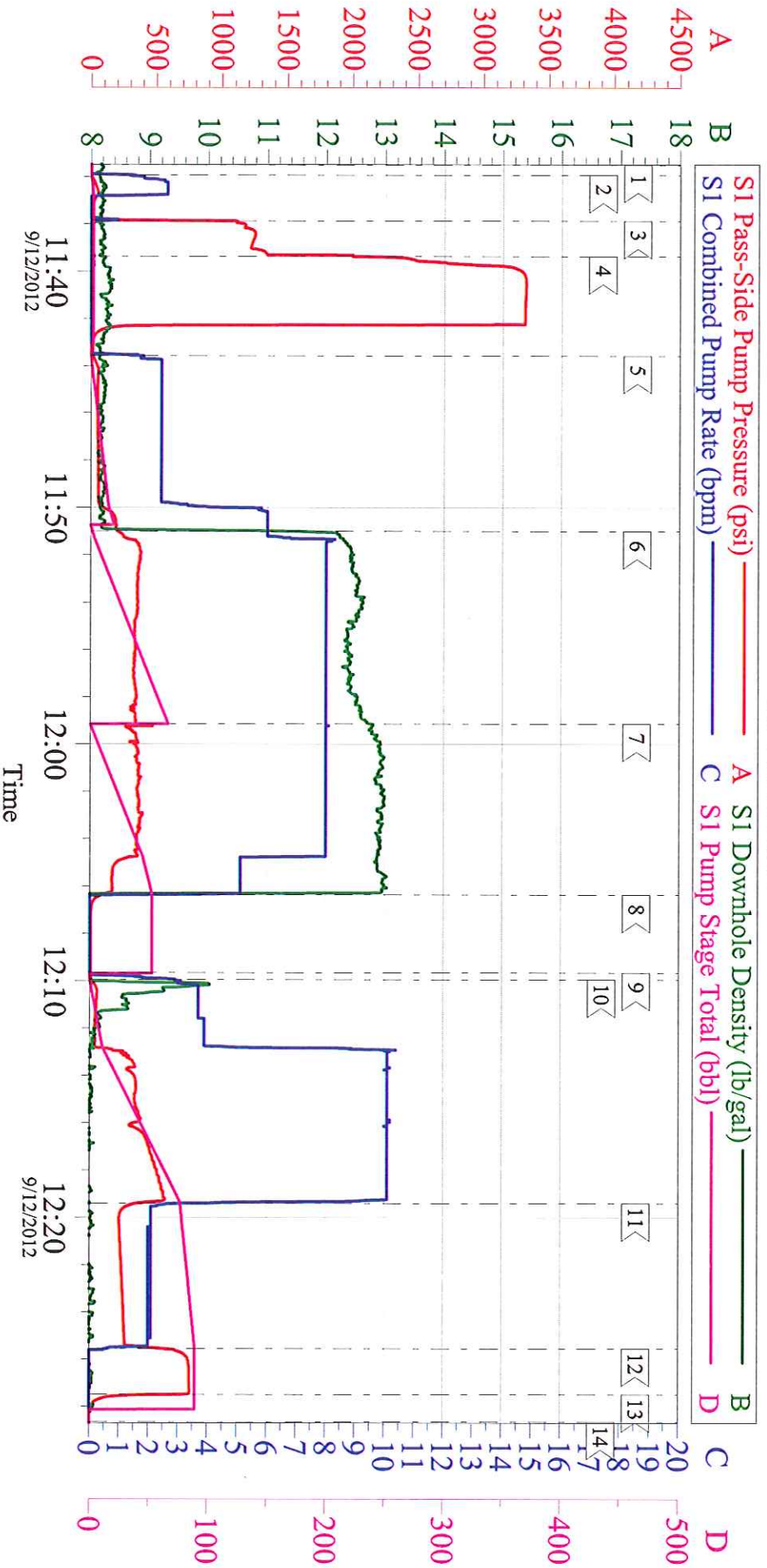
Saturday, September 22, 2012 11:39:00

Cementing Job Log

Pump Tail Cement	09/12/2012 11:59		8	60			300.0	160 SKS, 12.8 PPG, 2.11 FT3/ SK, 11.75 GAL/SK, SET UP TIME 1:51 @ 70 BC
Shutdown	09/12/2012 12:06							
Drop Top Plug	09/12/2012 12:09							
Pump Displacement	09/12/2012 12:09		10	78			384.0	FRESH WATER+100LBS SODIUM BICARBONATE IN THE FIRST 10BBLs OF DISPLACEMENT/THE REST OF DISPLACEMENT FLUID WAS FRESH WATER.
Slow Rate	09/12/2012 12:19		2	10			280.0	
Bump Plug	09/12/2012 12:25			88			763.0	
Check Floats	09/12/2012 12:27							FLOATS HELD/1BBLs FLOW BACK
End Job	09/12/2012 12:28							
Post-Job Safety Meeting (Pre Rig-Down)	09/12/2012 12:35							ALL HES PERSONEL
Depart Location Safety Meeting	09/12/2012 13:35							ALL HES PERSONEL
Crew Leave Location	09/12/2012 13:45							
Other	09/12/2012 13:50							THANK YOU FOR CHOOSING HALLIBURTON, JAVIER CASTILLO AND CREW

WPX RMV 80-34

9 5/8 SURFACE



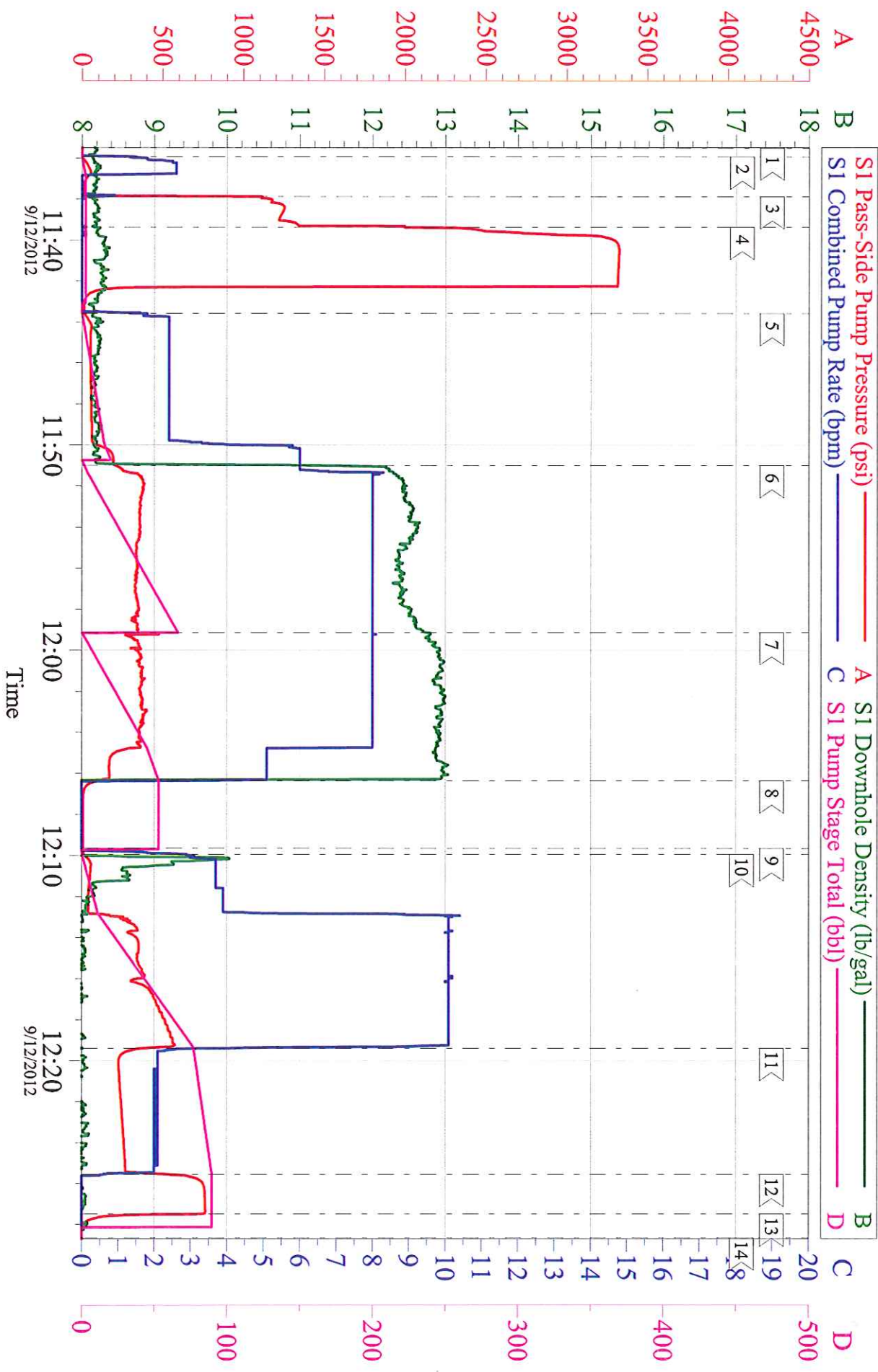
Customer: WPX ENERGY ROCKY MOUNTAIN LLC-EBUS
 Well Description: RMV 80-34
 Company Rep: WC WILSON

Job Date: 12-Sep-2012
 Job Type: 9 5/8 SURFACE
 Cement Supervisor: JAVIER CASTILLO

Sales Order #: 9788263
 ADC Used: YES
 Elite #: BRENT BANKS

WPX RMV 80-34

9 5/8 SURFACE



Customer:	WPX ENERGY ROCKY MOUNTAIN LLC-EBUS	Job Date:	12-Sep-2012	Sales Order #:	9788263
Well Description:	RMV 80-34	Job Type:	9 5/8 SURFACE	ADC Used:	YES
Company Rep:	WC WILSON	Cement Supervisor:	JAVIER CASTILLO	Elite #4:	BRENT BANKS