

WPX Energy Rocky Mtn LLC

RMV 80-34

API #05-045-19834-00

471' FSL x 2147' FEL - SHL

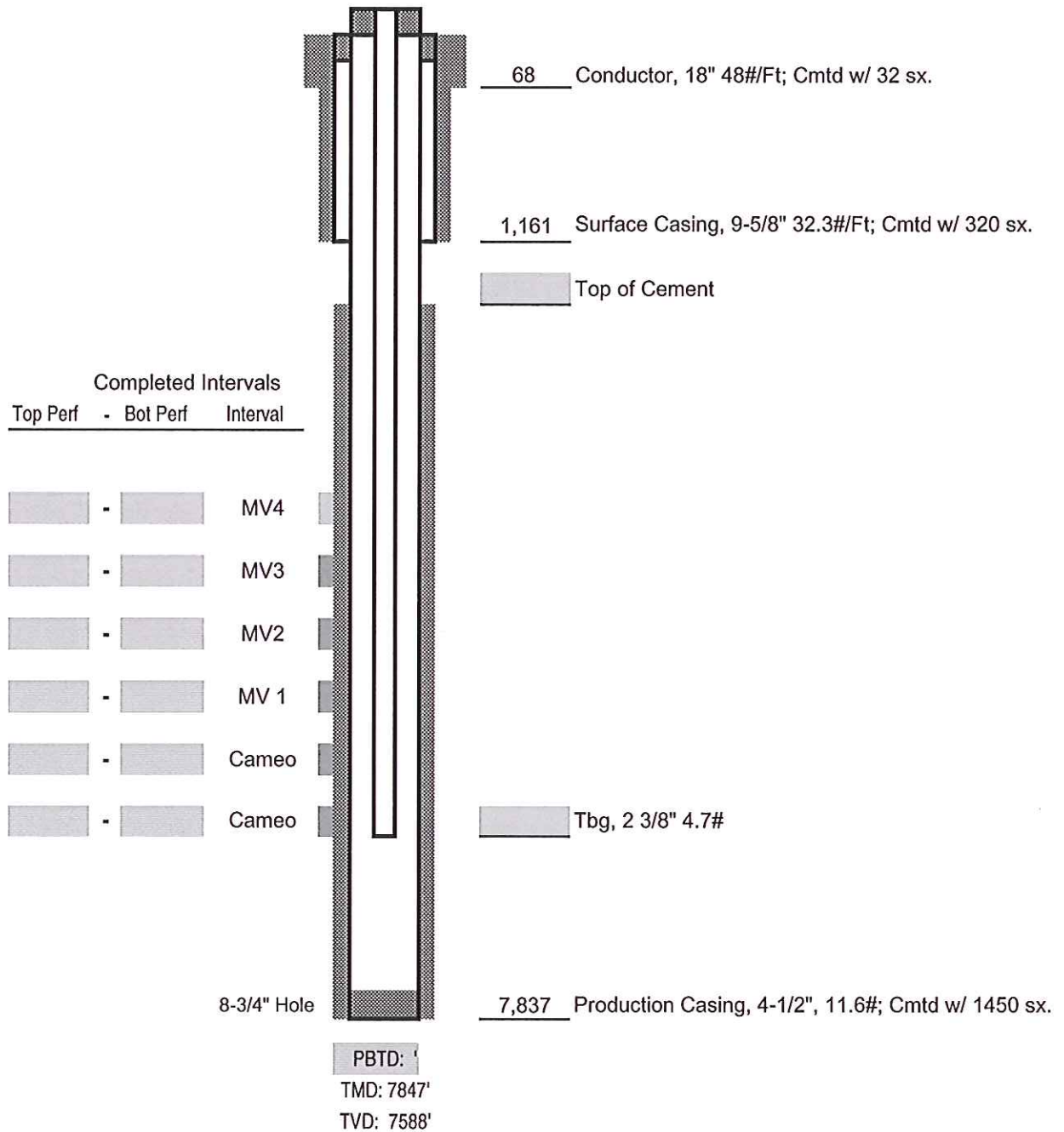
(SWSE) Sec. 27-T6S-R94W

375' FNL x 916' FEL - BHL

(NENE) Sec. 34-T6S-T94W

Garfield County, Colorado

PRELIMINARY



WAITING ON COMPLETION

Not to Scale