

---

# **WPX ENERGY ROCKY MOUNTAIN LLC-EBUS**

---

**KP 524-8  
KOKOPELLI  
Garfield County , Colorado**

**Cement Surface Casing**  
**12-Mar-2012**

**Job Site Documents**

## The Road to Excellence Starts with Safety

Sold To #: 300721	Ship To #: 2912130	Quote #:	Sales Order #: 9321052
Customer: WPX ENERGY ROCKY MOUNTAIN LLC-EBUS	Customer Rep: HUTSON, MAT		
Well Name: KP	Well #: 524-8	API/UWI #: 05-045-20984	
Field: KOKOPELLI	City (SAP): SILT	County/Parish: Garfield	State: Colorado
Lat: N 39.536 deg. OR N 39 deg. 32 min. 7.832 secs.	Long: W 107.58 deg. OR W -108 deg. 25 min. 12.76 secs.		
Contractor: NABORS	Rig/Platform Name/Num: NABORS 574		
Job Purpose: Cement Surface Casing			
Well Type: Development Well	Job Type: Cement Surface Casing		
Sales Person: SCOTT, KYLE	Srv Supervisor: SLAUGHTER, JESSE	MBU ID Emp #: 454315	

## Job Personnel

HES Emp Name	Exp Hrs	Emp #	HES Emp Name	Exp Hrs	Emp #	HES Emp Name	Exp Hrs	Emp #
BECK, MICHAEL George	7	489151	BRENNECKE, ANDREW Bailey	7	486345	SLAUGHTER, JESSE Dean	7	454315
WYCKOFF, RYAN Scott	7	476117						

## Equipment

HES Unit #	Distance-1 way	HES Unit #	Distance-1 way	HES Unit #	Distance-1 way	HES Unit #	Distance-1 way
10248057	60 mile	10616651C	60 mile	10867094	60 mile	10897925	60 mile
11583933	60 mile	11808827	60 mile				

## Job Hours

Date	On Location Hours	Operating Hours	Date	On Location Hours	Operating Hours	Date	On Location Hours	Operating Hours
03-12-2012	7	3.5						

TOTAL	Total is the sum of each column separately							
-------	--	--	--	--	--	--	--	--

## Job

Formation Name						Date	Time	Time Zone	
Formation Depth (MD)	Top			Bottom		Called Out	12 - Mar - 2012	00:30	MST
Form Type			BHST			On Location	12 - Mar - 2012	05:30	MST
Job depth MD	1236.2 ft		Job Depth TVD		1236.2 ft	Job Started	12 - Mar - 2012	09:49	MST
Water Depth			Wk Ht Above Floor		7. ft	Job Completed	12 - Mar - 2012	11:07	MST
Perforation Depth (MD)	From			To		Departed Loc	12 - Mar - 2012	12:30	MST

## Well Data

Description	New / Used	Max pressure psig	Size in	ID in	Weight lbm/ft	Thread	Grade	Top MD ft	Bottom MD ft	Top TVD ft	Bottom TVD ft
-------------	------------	-------------------	---------	-------	---------------	--------	-------	-----------	--------------	------------	---------------

## Sales/Rental/3<sup>rd</sup> Party (HES)

Description	Qty	Qty uom	Depth	Supplier
R/A DENSOMETER W/CHART RECORDER,/JOB,ZI	1	JOB		
ADC (AUTO DENSITY CTRL) SYS, /JOB,ZI	1	JOB		
PORT. DAS W/CEMWIN;ACQUIRE W/HES, ZI	1	JOB		
PLUG,CMTG,TOP,9 5/8,HWE,8.16 MIN/9.06 MA	1	EA		

## Tools and Accessories

Type	Size	Qty	Make	Depth	Type	Size	Qty	Make	Depth	Type	Size	Qty	Make
Guide Shoe					Packer					Top Plug	9.625	1	HES
Float Shoe					Bridge Plug					Bottom Plug			
Float Collar					Retainer					SSR plug set			
Insert Float										Plug Container	9.625	1	HES
Stage Tool										Centralizers			

## Miscellaneous Materials

Gelling Agt	Conc	Surfactant	Conc	Acid Type	Qty	Conc	%
Treatment Fld	Conc	Inhibitor	Conc	Sand Type	Size	Qty	

## Fluid Data

Stage/Plug #: 1

Fluid #	Stage Type	Fluid Name	Qty	Qty uom	Mixing Density lbm/gal	Yield ft <sup>3</sup> /sk	Mix Fluid Gal/sk	Rate bbl/min	Total Mix Fluid Gal/sk
1	Fresh Water	FRESH WATER	20.00	bbl	8.33	.0	.0	4	
2	VersaCem Lead	VERSACEM (TM) SYSTEM (452010)	195.0	sacks	12.3	2.38	13.75	4.5	13.75
3	VersaCem Tail	VERSACEM (TM) SYSTEM (452010)	160.0	sacks	12.8	2.11	11.75	4.5	11.75
11.75 Gal		FRESH WATER							
4	Displacement Fluid	FRESH WATER	93.9	bbl	8.34	.0	.0	10	
<b>Calculated Values</b>		<b>Pressures</b>		<b>Volumes</b>					
Displacement	93.9	Shut In: Instant		Lost Returns	NO	Cement Slurry	143	Pad	
Top Of Cement	SURFACE	5 Min		Cement Returns	30	Actual Displacement	93.9	Treatment	
Frac Gradient		15 Min		Spacers	20	Load and Breakdown		Total Job	257
<b>Rates</b>									
Circulating		Mixing	4.5	Displacement	10	Avg. Job	7		
Cement Left In Pipe	Amount	0 ft	Reason	Shoe Joint					
Frac Ring # 1 @	ID	Frac ring # 2 @	ID	Frac Ring # 3 @	ID	Frac Ring # 4 @	ID		
The Information Stated Herein Is Correct				Customer Representative Signature					

*The Road to Excellence Starts with Safety*

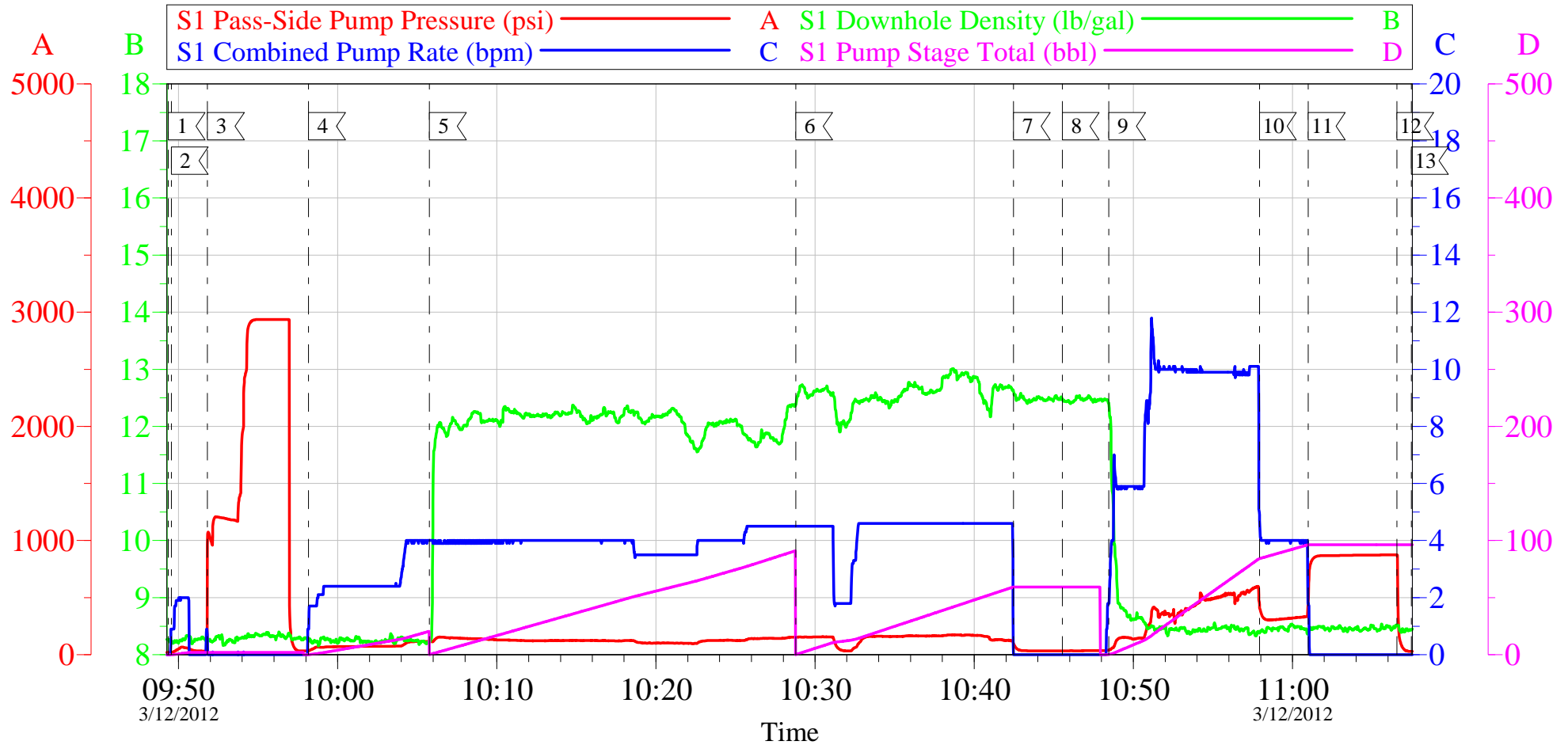
<b>Sold To #:</b> 300721		<b>Ship To #:</b> 2912130		<b>Quote #:</b>		<b>Sales Order #:</b> 9321052	
<b>Customer:</b> WPX ENERGY ROCKY MOUNTAIN LLC-EBUS				<b>Customer Rep:</b> HUTSON, MAT			
<b>Well Name:</b> KP			<b>Well #:</b> 524-8			<b>API/UWI #:</b> 05-045-20984	
<b>Field:</b> KOKOPELLI		<b>City (SAP):</b> SILT		<b>County/Parish:</b> Garfield		<b>State:</b> Colorado	
<b>Legal Description:</b>							
<b>Lat:</b> N 39.536 deg. OR N 39 deg. 32 min. 7.832 secs.				<b>Long:</b> W 107.58 deg. OR W -108 deg. 25 min. 12.76 secs.			
<b>Contractor:</b> NABORS			<b>Rig/Platform Name/Num:</b> NABORS 574				
<b>Job Purpose:</b> Cement Surface Casing						<b>Ticket Amount:</b>	
<b>Well Type:</b> Development Well			<b>Job Type:</b> Cement Surface Casing				
<b>Sales Person:</b> SCOTT, KYLE			<b>Srvc Supervisor:</b> SLAUGHTER, JESSE			<b>MBU ID Emp #:</b> 454315	

Activity Description	Date/Time	Cht #	Rate bbl/ min	Volume bbl		Pressure psig		Comments
				Stage	Total	Tubing	Casing	
Call Out	03/12/2012 00:30							TD 1280 FT, TP 1236.2 FT, SHOE 43.48 FT, CSG 9 5/8 IN 32.3 LB/FT, HOLE 13 1/2 IN, MUD WT 9.7 PPG
Pre-Convoy Safety Meeting	03/12/2012 02:50							WITH ALL HES PERSONNEL
Crew Leave Yard	03/12/2012 03:00							
Arrive At Loc	03/12/2012 05:30							RIG WAS RUNNING CASING UPON HES ARRIVAL
Assessment Of Location Safety Meeting	03/12/2012 08:30							WITH ALL HES PERSONNEL
Other	03/12/2012 08:40							SPOT EQUIPMENT
Pre-Rig Up Safety Meeting	03/12/2012 08:50							WITH ALL HES PERSONNEL
Rig-Up Equipment	03/12/2012 09:00							
Pre-Job Safety Meeting	03/12/2012 09:40							WITH ALL PERSONNEL ON LOCATION
Start Job	03/12/2012 09:49							
Other	03/12/2012 09:49		2	2			67.0	FILL LINES WITH FRESH WATER
Test Lines	03/12/2012 09:51							TESTED LINES TO 2935 PSI PRESSURE HOLDING
Pump Spacer 1	03/12/2012 09:58		4	20			115.0	FRESH WATER
Activity Description	Date/Time	Cht #	Rate bbl/ min	Volume bbl		Pressure psig		Comments
				Stage	Total	Tubing	Casing	

Pump Lead Cement	03/12/2012 10:05		4.5	82.7			145.0	195 SKS AT 12.3 PPG, 2.38 FT3/SK, 13.75 GAL/SK. DENSITY FLUCUATED DUE TO HEAD MALFUNCTION HAD TO MIX BY HAND
Pump Tail Cement	03/12/2012 10:28		4.5	60.1			170.0	160 SKS AT 12.8 PPG, 2.11 FT3/SK, 11.75 GAL/SK
Shutdown	03/12/2012 10:42							
Drop Top Plug	03/12/2012 10:45							PLUG LAUNCHED
Pump Displacement	03/12/2012 10:48		10	83.9			580.0	FRESH WATER
Slow Rate	03/12/2012 10:57		2	10			344.0	SLOW RATE 10 BBLS PRIOR TO CALCULATED DISPLACEMENT
Bump Plug	03/12/2012 11:01		2		93.9		850.0	PLUG BUMPED
Check Floats	03/12/2012 11:06							FLOATS HOLDING. HES RETURNED 1/2 BBL H2O TO PUMP
End Job	03/12/2012 11:07							PIPE WAS STATIC DURING JOB, GOOD CIRCULATION THROUGHOUT JOB. HES RETURNED 30 BBL CEMENT TO SURFACE
Pre-Rig Down Safety Meeting	03/12/2012 11:10							WITH ALL HES PERSONNEL
Rig-Down Equipment	03/12/2012 11:20							
Pre-Convoy Safety Meeting	03/12/2012 12:20							WITH ALL HES PERSONNEL
Crew Leave Location	03/12/2012 12:30							
Comment	03/12/2012 12:31							THANK YOU FOR USING HALLIBURTON CEMENT DEPARTMENT. JESSE SLAUGHTER AND CREW.

# WILLIAMS KP 524-8

9 5/8 SURFACE



## Local Event Log

1 START JOB	09:49:21	2 PRIME LINES	09:49:33	3 TEST LINES	09:51:49
4 PUMP H2O SPACER	09:58:11	5 PUMP LEAD CEMENT	10:05:46	6 PIMP TAIL CEMENT	10:28:47
7 SHUTDOWN	10:42:28	8 DROP TOP PLUG	10:45:32	9 PUMP DISPLACEMENT	10:48:27
10 SLOW RATE	10:57:56	11 BUMP PLUG	11:01:00	12 CHECK FLOATS	11:06:33
13 END JOB	11:07:29				

Customer: WILLIAMS  
Well Description: KP 524-8  
Customer Rep: MATT HUTSON

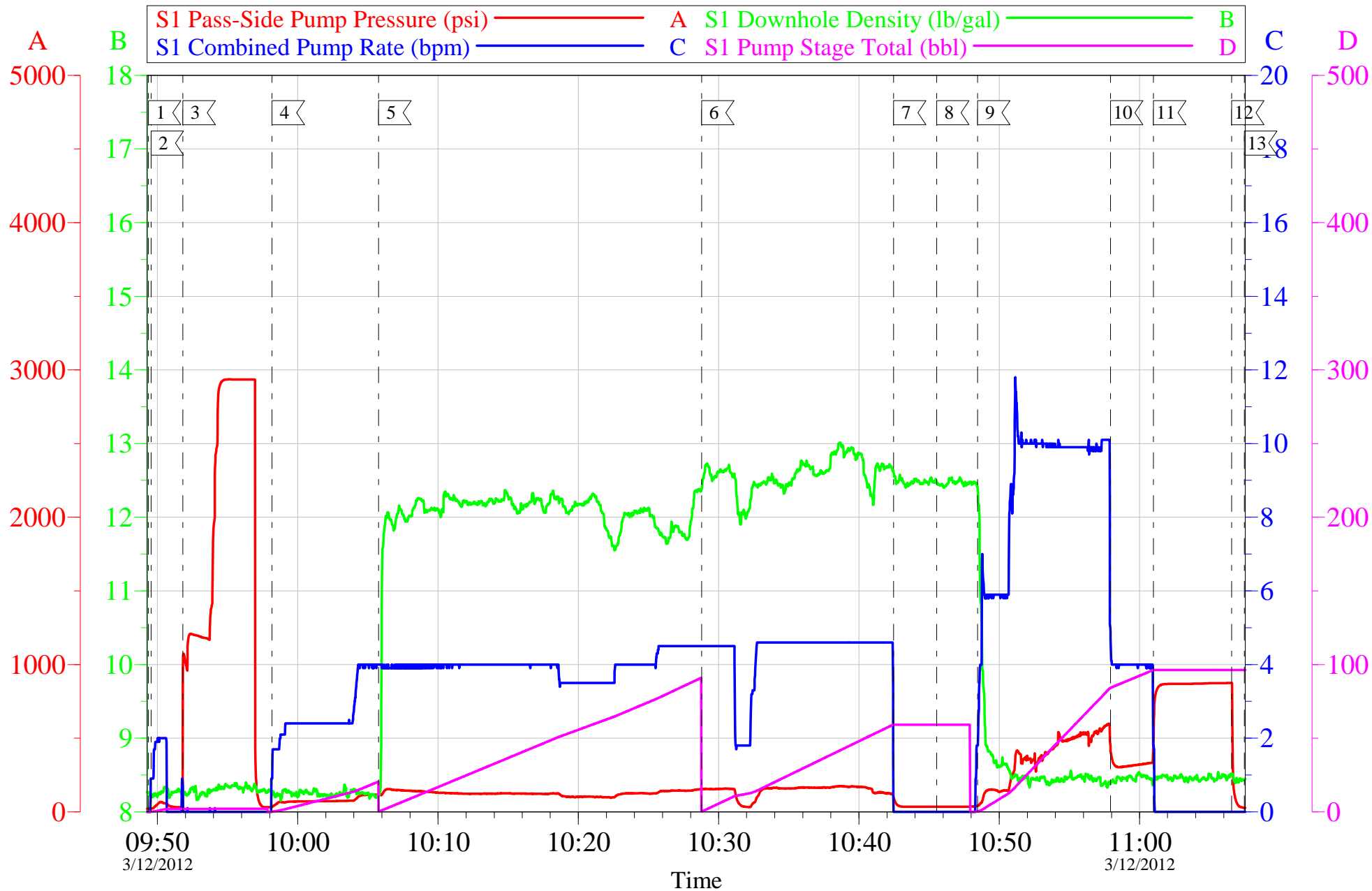
Job Date: 12-Mar-2012  
Job Type: SURFACE  
Cement Supervisor: JESSE SLAUGHTER

Sales Order #: 9321052  
ADC Used: YES  
Elite #4: MIKE BECK

OptiCem v6.4.10  
12-Mar-12 11:24

# WILLIAMS KP 524-8

## 9 5/8 SURFACE



Customer: WILLIAMS  
Well Description: KP 524-8  
Customer Rep: MATT HUTSON

Job Date: 12-Mar-2012  
Job Type: SURFACE  
Cement Supervisor: JESSE SLAUGHTER

Sales Order #: 9321052  
ADC Used: YES  
Elite #4: MIKE BECK

OptiCem v6.4.10  
12-Mar-12 11:26

# HALLIBURTON

## Water Analysis Report

Company: WILLIAMS PRODUCTION

Submitted by: JESSE SLAUGHTER

Attention: LAB

Lease KP

Well # 524-8

Date: 3/12/2012

Date Rec.:

S.O.# 9321052

Job Type: SURFACE

Specific Gravity	<i>MAX</i>	<b>1</b>
pH	<i>8</i>	<b>6</b>
Potassium (K)	<i>5000</i>	<b>250</b> Mg / L
Calcium (Ca)	<i>500</i>	<b>120</b> Mg / L
Iron (FE2)	<i>300</i>	<b>0</b> Mg / L
Chlorides (Cl)	<i>3000</i>	<b>0</b> Mg / L
Sulfates (SO <sub>4</sub> )	<i>1500</i>	<b>UNDER 200</b> Mg / L
Chlorine (Cl <sub>2</sub> )		<b>0</b> Mg / L
Temp	<i>40-80</i>	<b>55</b> Deg
Total Dissolved Solids		<b>200</b> Mg / L

Respectfully: JESSE SLAUGHTER

Title: CEMENTING SUPERVISOR

Location: Grand Junction, CO

NOTICE:

This report is limited to the described sample tested. Any person using or relying on this report agrees that Halliburton shall not be liable for any loss or damage whether due to act or omission resulting from such report or its use.



<b>Sales Order #:</b> 9321052	<b>Line Item:</b> 10	<b>Survey Conducted Date:</b> 3/12/2012
<b>Customer:</b> WPX ENERGY ROCKY MOUNTAIN LLC-EBUS		<b>Job Type (BOM):</b> CMT SURFACE CASING BOM
<b>Customer Representative:</b> MATT HUTSON		<b>API / UWI: (leave blank if unknown)</b> 05-045-20984
<b>Well Name:</b> KP		<b>Well Number:</b> 524-8
<b>Well Type:</b> Development Well	<b>Well Country:</b> United States of America	
<b>H2S Present:</b>	<b>Well State:</b> Colorado	<b>Well County:</b> Garfield

Dear Customer,

We hope that you were satisfied with the service quality of this job performed by Halliburton. It is the aim of our management and service personnel to deliver equipment and service of a standard unmatched in the service sector of the energy industry.

Please take the time to let us know if our performance met with your satisfaction. Please be as critical as possible to ensure we constantly improve our service. Your comments are of great value to us and are intended for the exclusive use of Halliburton.

### CUSTOMER SATISFACTION SURVEY

CATEGORY	CUSTOMER SATISFACTION RESPONSE	
Survey Conducted Date	The date the survey was conducted	3/12/2012
Survey Interviewer	The survey interviewer is the person who initiated the survey.	JESSE SLAUGHTER (HB21762)
Customer Participation	Did the customer participate in this survey? (Y/N)	Yes
Customer Representative	Enter the Customer representative name	MATT HUTSON
HSE	Was our HSE performance satisfactory? Circle Y or N	Yes
Equipment	Were you satisfied with our Equipment? Circle Y or N	Yes
Personnel	Were you satisfied with our people? Circle Y or N	Yes
Customer Comment	Customer's Comment	

<b>CUSTOMER SIGNATURE</b>
---------------------------

<b>Sales Order #:</b> 9321052	<b>Line Item:</b> 10	<b>Survey Conducted Date:</b> 3/12/2012
<b>Customer:</b> WPX ENERGY ROCKY MOUNTAIN LLC-EBUS		<b>Job Type (BOM):</b> CMT SURFACE CASING BOM
<b>Customer Representative:</b> MATT HUTSON		<b>API / UWI: (leave blank if unknown)</b> 05-045-20984
<b>Well Name:</b> KP		<b>Well Number:</b> 524-8
<b>Well Type:</b> Development Well	<b>Well Country:</b> United States of America	
<b>H2S Present:</b>	<b>Well State:</b> Colorado	<b>Well County:</b> Garfield

*KEY PERFORMANCE INDICATORS*

General	
<b>Survey Conducted Date</b>	3/12/2012
The date the survey was conducted	

Cementing KPI Survey	
<b>Type of Job</b>	0
Select the type of job. (Cementing or Non-Cementing)	
<b>Select the Maximum Deviation range for this Job</b>	Vertical
What is the highest deviation for the job you just completed? This may not be the maximum well deviation.	
<b>Total Operating Time (hours)</b>	3
Total Operating Hours Including Rig-up, Pumping, Rig-down. Enter in decimal format.	
<b>HSE Incident, Accident, Injury</b>	No
HSE Incident, Accident, Injury. This should be recordable incidents only.	
<b>Was the job purpose achieved?</b>	Yes
Was the job delivered correctly as per customer agreed design?	
<b>Operating Hours (Pumping Hours)</b>	1.5
Total number of hours pumping fluid on this job. Enter in decimal format.	
<b>Customer Non-Productive Rig Time (hrs)</b>	0
Lost time due to Halliburton in the start, execution, or completion of an ordered service or product, or delays in a follow-on service. Enter in decimal format. 0 if none.	
<b>Type of Rig Classification Job Was Performed</b>	Drilling Rig (Portable)
Type Of Rig (classification) Job Was Performed On	
<b>Number Of JSAs Performed</b>	6
Number Of Jsas Performed	
<b>Number of Unplanned Shutdowns</b>	0
Unplanned shutdown is when injection stops for any period of time.	
<b>Was this a Primary Cement Job (Yes / No)</b>	Yes

<b>Sales Order #:</b> 9321052	<b>Line Item:</b> 10	<b>Survey Conducted Date:</b> 3/12/2012
<b>Customer:</b> WPX ENERGY ROCKY MOUNTAIN LLC-EBUS		<b>Job Type (BOM):</b> CMT SURFACE CASING BOM
<b>Customer Representative:</b> MATT HUTSON		<b>API / UWI: (leave blank if unknown)</b> 05-045-20984
<b>Well Name:</b> KP		<b>Well Number:</b> 524-8
<b>Well Type:</b> Development Well	<b>Well Country:</b> United States of America	
<b>H2S Present:</b>	<b>Well State:</b> Colorado	<b>Well County:</b> Garfield

Primary Cement Job= Casing job, Liner job, or Tie-back job.	
<b>Did We Run Wiper Plugs?</b> Did We Run Top And Bottom Casing Wiper Plugs?	Top
<b>Mixing Density of Job Stayed in Designed Density Range (0-100%)</b> Density Range defined as +/- .20 ppg. Calculation: Total BBLs cement mixed at designed density divided by total BBLs of cement multiplied by 100	90
<b>Was Automated Density Control Used?</b> Was Automated Density Control (ADC) Used ?	Yes
<b>Pump Rate (percent) of Job Stayed At Designed Pump Rate</b> Pump Rate range defined as +/- 1bbl/min. Calculation: Total BBLs of fluid pumped at the designed rate divided by Total BBLs of fluid pumped, multiplied by 100	95
<b>Nbr of Remedial Sqz Jobs Rqd - Competition</b> Number Of Remedial Squeeze Jobs Required After Primary Job Performed By Competition	0
<b>Nbr of Remedial Plug Jobs Rqd - HES</b> Number Of Remedial Plug Jobs Needed After Primary Plug Pumped By HES	0
<b>Nbr of Remedial Sqz Jobs Rqd - HES</b> Number Of Remedial Squeeze Jobs Required After Primary Job Performed By HES	0