



NAD 1927 (NADCON CONUS)

+N/-S 0.0  
+E/-W 0.0  
Northing 606896.30  
SSD 576 9/22/08 sam

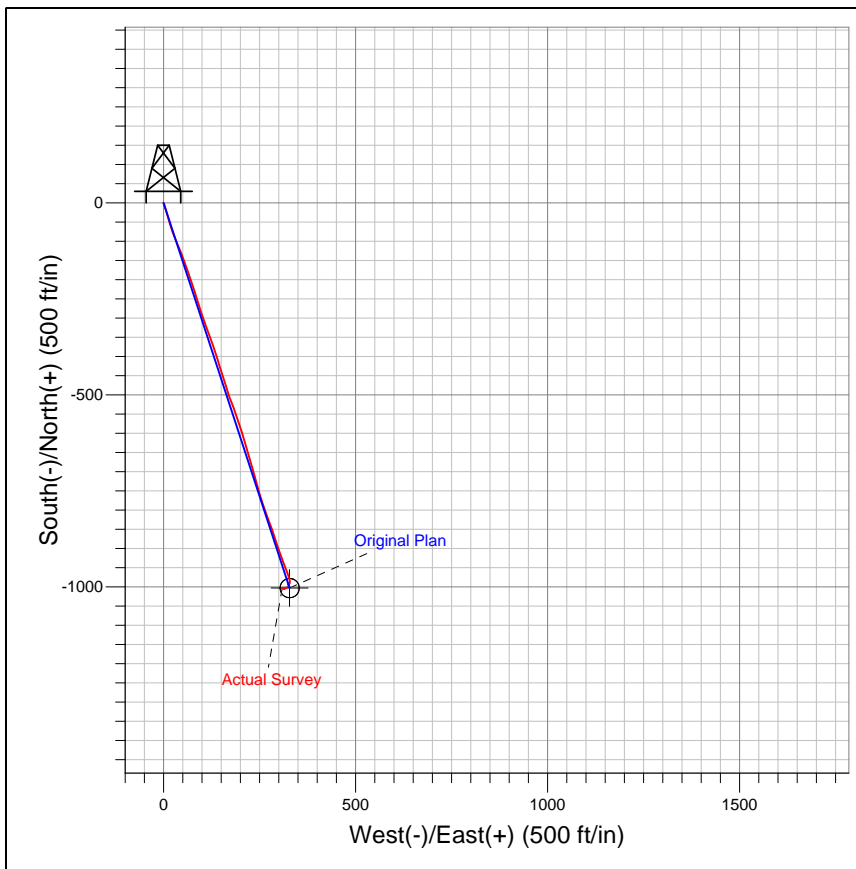
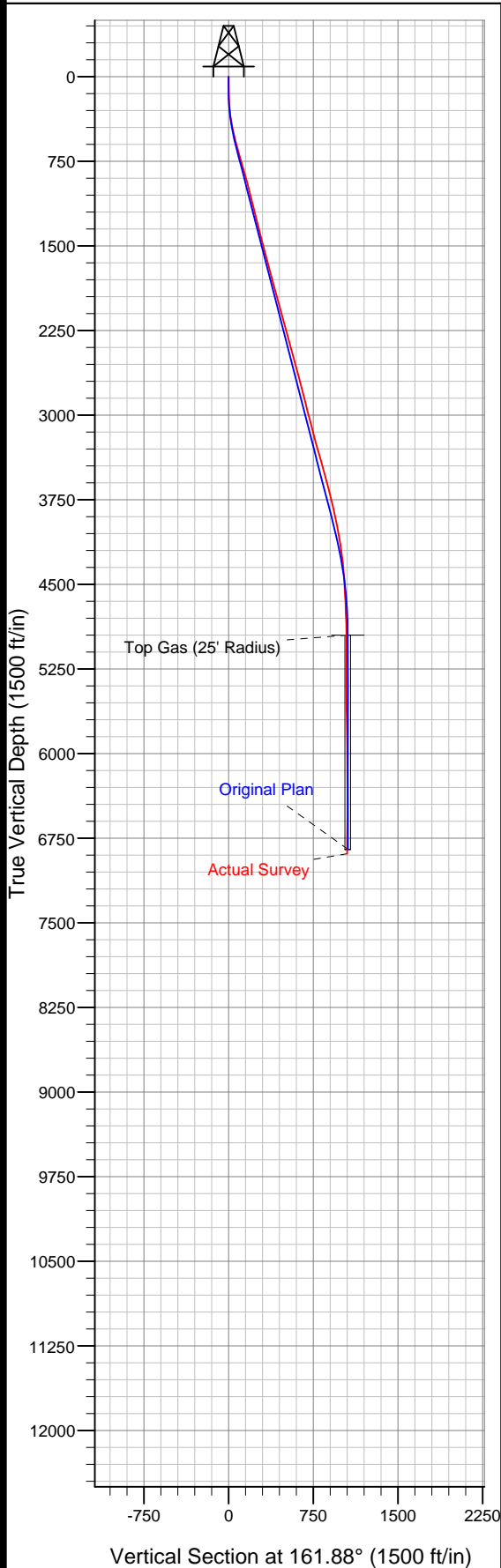
Well Name: GM 522-6  
Surface Location: MV 17-6 Pad  
GM 522-6

US State Plane 1927 (Exact solution)  
Ground Elevation: 6398.0  
Easting 1250745.40  
COMPASS - WELL @ 6424.0ft (SSD 576 9/22/08 sam)

Colorado Central 502

Latitude 39° 28' 10.864 N  
Longitude 108° 9' 15.697 W

Slot B6



Azimuths to True North  
Magnetic North: 10.74°

Magnetic Field  
Strength: 52499.6snT  
Dip Angle: 65.77°  
Date: 10/27/2008  
Model: IGRF2005-10