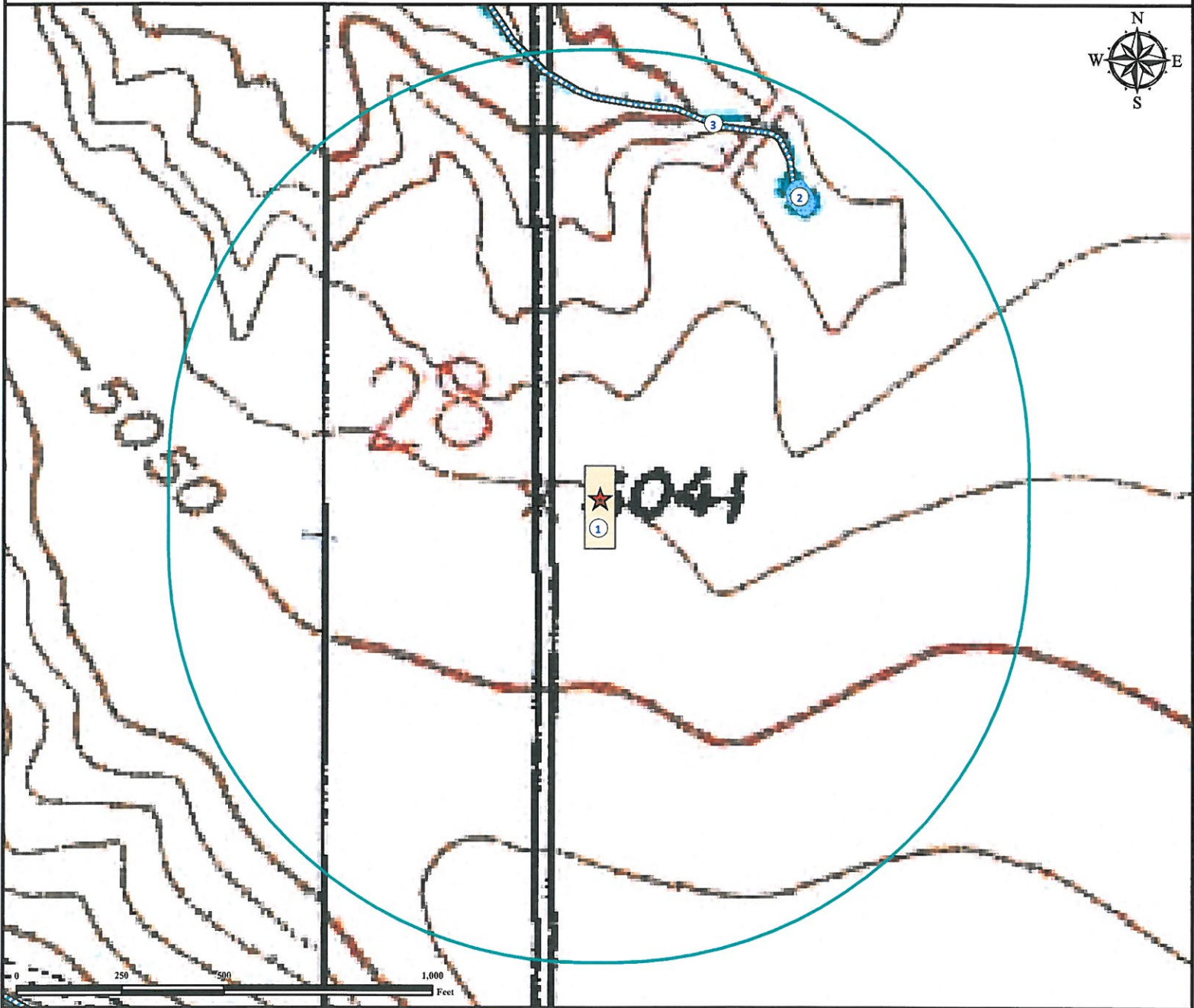


Hydrology Map

B D E 2 7 N W F A C I L I T Y

NW¼ SW¼ SECTION 27, TOWNSHIP 4 NORTH, RANGE 68 WEST OF THE 6TH PRINCIPAL MERIDIAN



1. Proposed BDE 27NW FACILITY.
2. Pond is ±844' NE.
3. Intermittent Stream is ±894' NE.

Legend

- | | | |
|-----------------|-------------------|---------------------|
| Reference Point | Proposed Facility | Intermittent Stream |
| | 1000' Radius | Pond |

Reference Location

** All Measurements are Made from
★ Reference Point **
Lat: 40.283599° Long: -104.998181° (NAD83)
Elevation: 5043 Feet



Use our resources to find yours!
www.petro-fs.com
(303) 928-7128

Field Date: 08/15/2012
Drafting Date: 08/17/2012
Drafter: DLR
Revision:

Data Sources:
- TOPO courtesy of USGS
- Water bodies courtesy of NHD
- Intermittent Stream courtesy of NHD

Prepared for:

