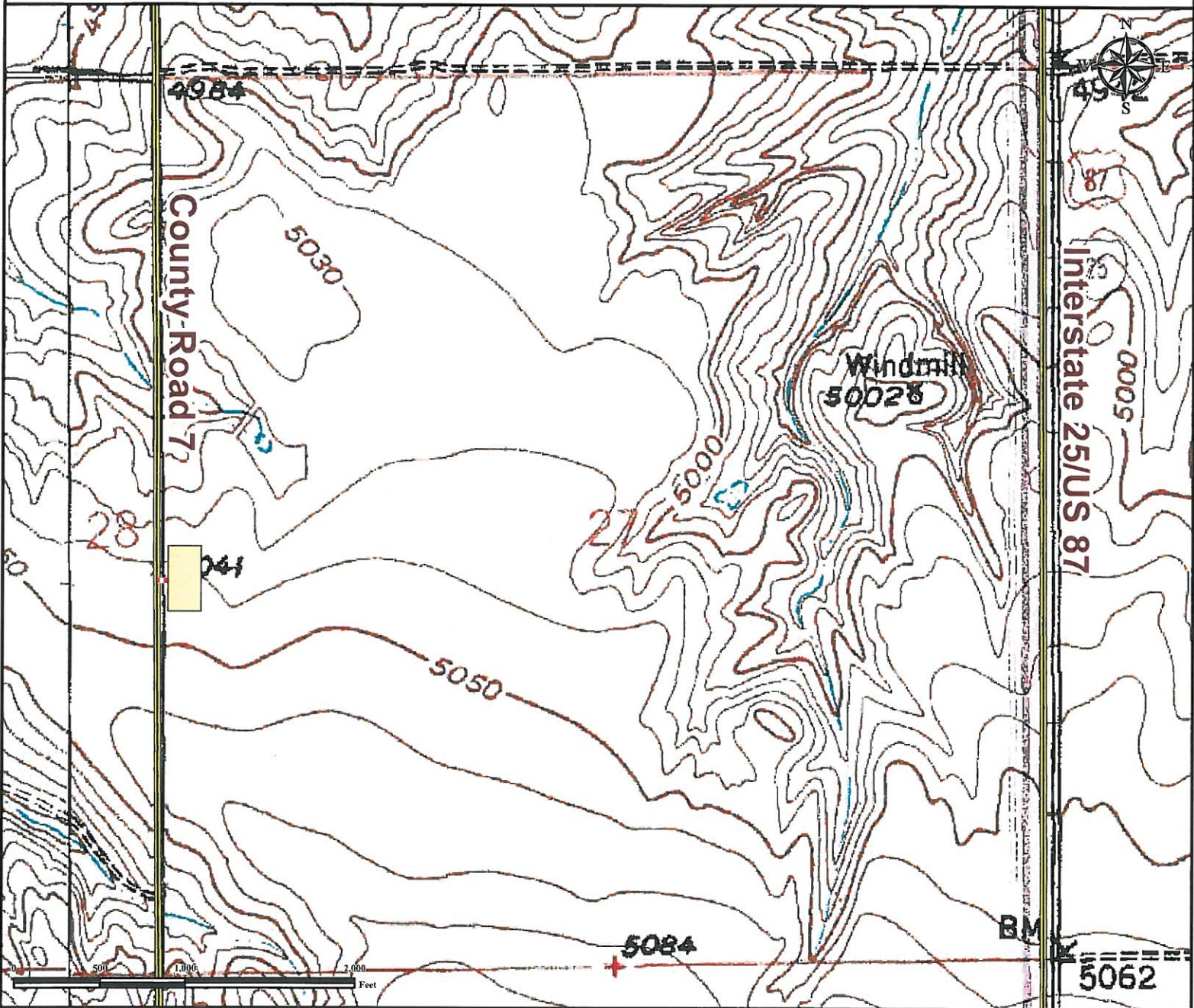


Access Road Map

B D E 2 7 N W F A C I L I T Y

NW¼ SW¼ SECTION 27, TOWNSHIP 4 NORTH, RANGE 68 WEST OF THE 6TH PRINCIPAL MERIDIAN



From Berthoud, CO: From the intersection of County Road 15 and State Highway 56, Drive East on State Highway 56 and proceed for ±4.0 miles.
Turn Right on County Road 7 and drive South for ±1.6 miles.
Turn Left onto proposed access road and drive East for ±0.02 miles to proposed facility location.

- Facility size has been exaggerated to be visible at this scale.

Total distance from Berthoud, CO to proposed well facility location is ±5.62 miles.

Legend

- Proposed Facility
- Proposed Access Road
- Public Road

Reference Location

** All Measurements are Made from
 ★ Reference Point **

Lat: 40.283599° Long: -104.998181° (NAD83)
 Elevation: 5043 Feet



Use our resources to find yours!
www.petro-fs.com
 (303) 928-7128

Field Date: 08/15/2012
 Drafting Date: 08/17/2012
 Drafter: DLR
 Revision:

Data Sources:
 - TOPO courtesy of USGS

Prepared for:

