

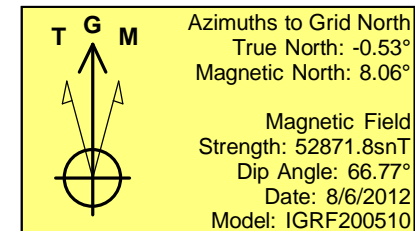
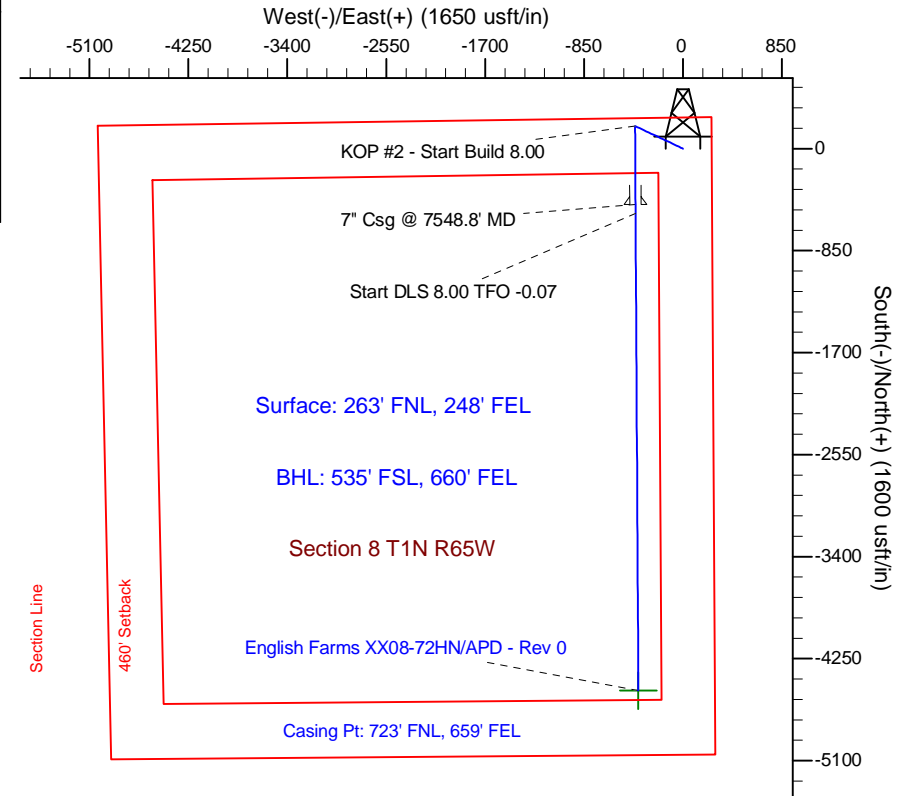
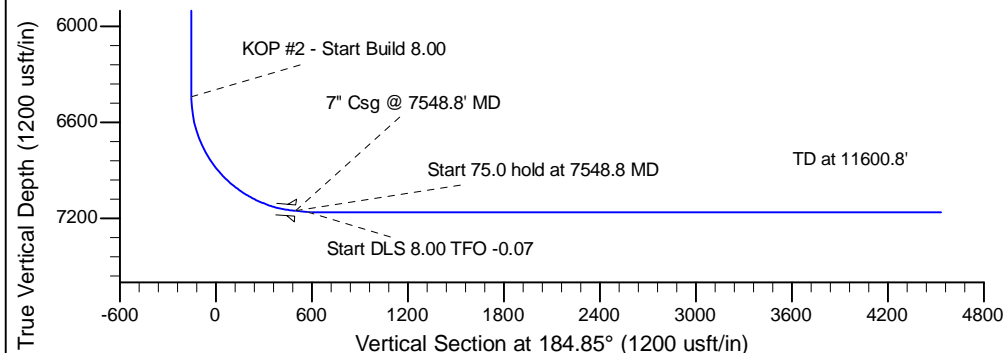
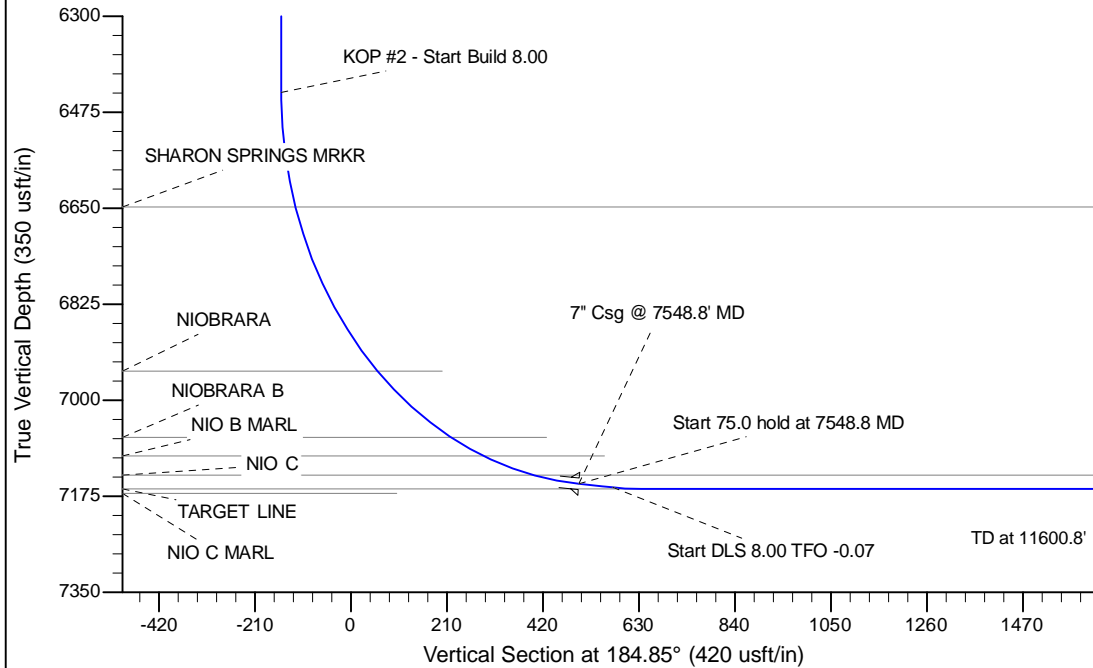
Project: Wattenberg Field
Site: XX (Sec.8-T01N-R65W) Weld County, CO
Well: English Farms XX08-72HN
Wellbore: Original Drilling
Design: APD - Rev 0

Northern Region Drilling

Geodetic System: US State Plane 1983
Datum: North American Datum 1983
Ellipsoid: GRS 1980
Zone: Colorado Northern Zone
System Datum: Mean Sea Level

SECTION DETAILS

Sec	MD	Inc	Azi	TVD	+N/-S	+E/-W	Dleg	TFace	VSEct	Target
1	0.0	0.00	0.00	0.0	0.0	0.0	0.00	0.00	0.0	
2	1800.0	0.00	0.00	1800.0	0.0	0.0	0.00	0.00	0.0	
3	2319.6	12.99	294.53	2315.2	24.3	-53.4	2.50	294.53	-19.7	
4	3812.5	12.99	294.53	3769.8	163.7	-358.6	0.00	0.00	-132.7	
5	4332.1	0.00	0.00	4285.0	188.0	-412.0	2.50	180.00	-152.5	
6	6486.3	0.00	0.00	6439.2	188.0	-412.0	0.00	0.00	-152.5	
7	7548.8	85.00	179.66	7152.7	-465.8	-408.1	8.00	179.66	498.6	
8	7623.8	85.00	179.66	7159.2	-540.5	-407.7	0.00	0.00	573.0	
9	7686.3	90.00	179.65	7162.0	-602.9	-407.3	8.00	-0.07	635.2	
10	11600.8	90.00	179.65	7162.0	-4517.3	-383.7	0.00	0.00	4533.6	English Farms XX08-72HN BHL 535'FSL, 660'FEL



WELL DETAILS: English Farms XX08-72HN			
Ground Level:	4931.0	Latitude	40.072610
Northing	1270359.64	Easting	3229668.38
Longitude	-104.679320		
Plan: APD - Rev 0 (English Farms XX08-72HN/Original Drilling)			
Created By: Carrie Willers	Date: 16:52, August 06 2012		
Checked: _____	Date: _____		
Reviewed: _____	Date: _____		
Approved: _____	Date: _____		