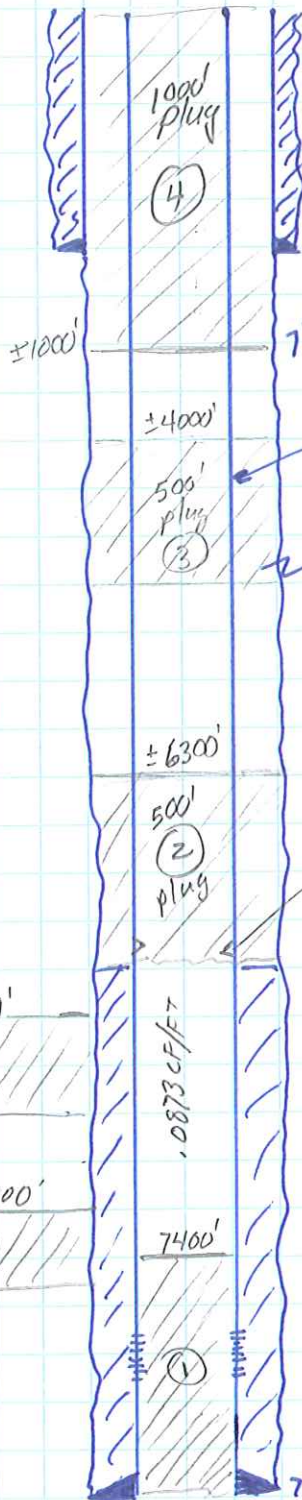


Webber Joseph WT #1



8 5/8" 24# K-55
2505x "G" cmt

8 5/8" Csg = .3576
705x

7 7/8" Hole = .3382 CF
500' = 1785x @ 20%

4 1/2" 11.6# K-55

.2278 CF
LF

Free pt & cut/retrieve csg.

6800' TROC (calculated) (6670' highest possible)

2005x 50/50 P02

1.21 CF/x (⇒ 6850'
w/20% excess)

ELog
7/27/13

6840'
N13

7100'
CD

±6300'

±4000'

±1200'

500'
plug
(3)

500'
(2)
plug

500'
(1)
plug

500'
(1)
plug

500'
(1)
plug

500'
(1)
plug

500'
(1)
plug

500'
(1)
plug

500'
(1)
plug

500'
(1)
plug

500'
(1)
plug

500'
(1)
plug

500'
(1)
plug

500'
(1)
plug

500'
(1)
plug

500'
(1)
plug

500'
(1)
plug

500'
(1)
plug

500'
(1)
plug

5 SVD
7533' - 7537'
7547' - 7590'

1 spf

7735'