
WPX ENERGY ROCKY MOUNTAIN LLC-EBUS

**KP 44-18
KOKOPELLI
Garfield County , Colorado**

Cement Surface Casing
23-Jun-2012

Job Site Documents

The Road to Excellence Starts with Safety

Sold To #: 300721	Ship To #: 2932341	Quote #:	Sales Order #: 9581185
Customer: WPX ENERGY ROCKY MOUNTAIN LLC-EBUS		Customer Rep: Valad, Gary	
Well Name: KP		Well #: 44-18	API/UWI #: 05-045-20632
Field: KOKOPELLI	City (SAP): SILT	County/Parish: Garfield	State: Colorado
Lat: N 39.522 deg. OR N 39 deg. 31 min. 20.176 secs.		Long: W 107.595 deg. OR W -108 deg. 24 min. 19.087 secs.	
Contractor: NABORS 574		Rig/Platform Name/Num: NABORS 574	
Job Purpose: Cement Surface Casing			
Well Type: Development Well		Job Type: Cement Surface Casing	
Sales Person: MAYO, MARK		Srvc Supervisor: NICKLE, RYON	MBU ID Emp #: 454759

Job Personnel

HES Emp Name	Exp Hrs	Emp #	HES Emp Name	Exp Hrs	Emp #	HES Emp Name	Exp Hrs	Emp #
BORSZICH, STEPHEN A	7	412388	NICKLE, RYON	7	454759	ROSE, BENJAMIN Keith	7	487022
WOLFE, JON P	7	485217						

Equipment

HES Unit #	Distance-1 way	HES Unit #	Distance-1 way	HES Unit #	Distance-1 way	HES Unit #	Distance-1 way
10011429	60 mile	10551730C	60 mile	10565341	60 mile	10973571	60 mile
11583934	60 mile	11808841	60 mile				

Job Hours

Date	On Location Hours	Operating Hours	Date	On Location Hours	Operating Hours	Date	On Location Hours	Operating Hours
6/22/12	1	0	6/23/12	6	3			

TOTAL Total is the sum of each column separately

Job

Job Times

Formation Name	Formation Depth (MD)	Top	Bottom	Called Out	Date	Time	Time Zone
		0	1245		22 - Jun - 2012	19:00	MST
Form Type		BHST		On Location	22 - Jun - 2012	23:00	MST
Job depth MD	1290. ft	Job Depth TVD		1290. ft	23 - Jun - 2012	03:38	MST
Water Depth		Wk Ht Above Floor			23 - Jun - 2012	04:51	MST
Perforation Depth (MD)	<i>From</i>		<i>To</i>	Departed Loc	23 - Jun - 2012	06:00	MST

Well Data

Description	New / Used	Max pressure psig	Size in	ID in	Weight lbm/ft	Thread	Grade	Top MD ft	Bottom MD ft	Top TVD ft	Bottom TVD ft
Sales/Rental/3rd Party (HES)											

Description	Qty	Qty uom	Depth	Supplier
PLUG,CMTG, TOP, 9 5/8, HW, 8.16 MIN/9.06 MA	1	EA		

Tools and Accessories

Type	Size	Qty	Make	Depth	Type	Size	Qty	Make	Depth	Type	Size	Qty	Make
Guide Shoe					Packer					Top Plug	9.625	1	HES
Float Shoe					Bridge Plug					Bottom Plug			
Float Collar					Retainer					SSR plug set			
Insert Float										Plug Container	9.625	1	HES
Stage Tool										Centralizers			

Miscellaneous Materials

Gelling Agt	Conc	Surfactant	Conc	Acid Type	Qty	Conc %
Treatment Fld	Conc	Inhibitor	Conc	Sand Type	Size	Qty

Fluid Data

Stage/Plug #: 1										
Fluid #	Stage Type	Fluid Name	Qty	Qty uom	Mixing Density lbm/gal	Yield ft ³ /sk	Mix Fluid Gal/sk	Rate bbl/min	Total Mix Fluid Gal/sk	

Stage/Plug #: 1									
Fluid #	Stage Type	Fluid Name	Qty	Qty uom	Mixing Density lbm/gal	Yield ft ³ /sk	Mix Fluid Gal/sk	Rate bbl/min	Total Mix Fluid Gal/sk
1	Fresh Water		20.00	bbl	8.33	.0	.0	4	
2	VersaCem Lead	VERSACEM (TM) SYSTEM (452010)	180.0	sacks	12.3	2.38	13.75	6	13.75
		13.75 Gal FRESH WATER7							
3	VersaCem Tail	VERSACEM (TM) SYSTEM (452010)	160.0	sacks	12.8	2.11	11.75	7	11.75
		11.75 Gal FRESH WATER							
4	Displacement Fluid		93.00	bbl	8.34	.0	.0	8	
Calculated Values		Pressures		Volumes					
Displacement	93.8	Shut In: Instant		Lost Returns		Cement Slurry	136.4	Pad	
Top Of Cement		5 Min		Cement Returns	25	Actual Displacement	93.8	Treatment	
Frac Gradient		15 Min		Spacers	20	Load and Breakdown		Total Job	250.2
Rates									
Circulating	RIG 12 BBL/MIN	Mixing	6.5	Displacement	8	Avg. Job	7.25		
Cement Left In Pipe	Amount	42 ft	Reason	Shoe Joint					
Frac Ring # 1 @	ID	Frac ring # 2 @	ID	Frac Ring # 3 @	ID	Frac Ring # 4 @	ID		
The Information Stated Herein Is Correct				Customer Representative Signature					

The Road to Excellence Starts with Safety

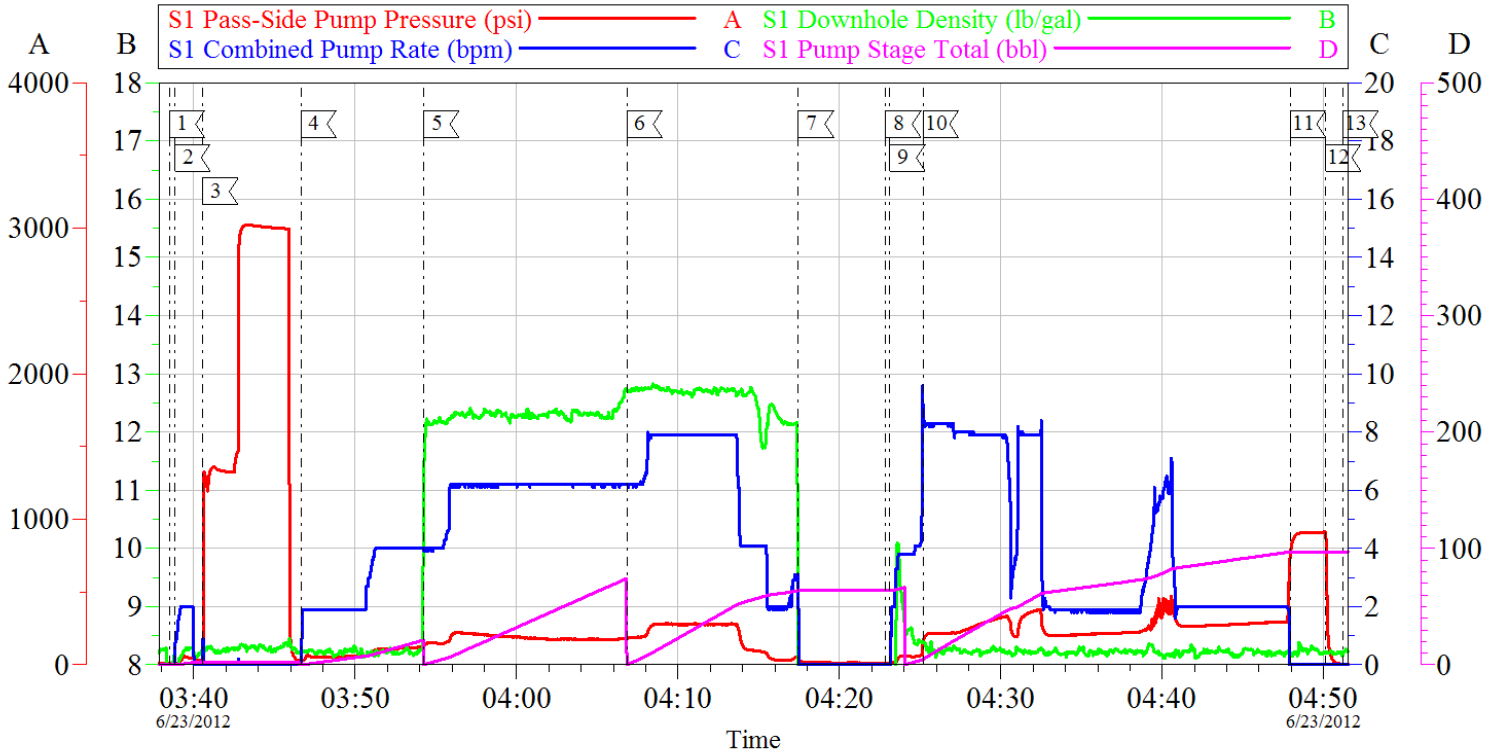
Sold To #: 300721	Ship To #: 2932341	Quote #:	Sales Order #: 9581185
Customer: WPX ENERGY ROCKY MOUNTAIN LLC-EBUS		Customer Rep: Valad, Gary	
Well Name: KP	Well #: 44-18	API/UWI #: 05-045-20632	
Field: KOKOPELLI	City (SAP): SILT	County/Parish: Garfield	State: Colorado
Legal Description:			
Lat: N 39.522 deg. OR N 39 deg. 31 min. 20.176 secs.		Long: W 107.595 deg. OR W -108 deg. 24 min. 19.087 secs.	
Contractor: NABORS 574		Rig/Platform Name/Num: NABORS 574	
Job Purpose: Cement Surface Casing			Ticket Amount:
Well Type: Development Well		Job Type: Cement Surface Casing	
Sales Person: MAYO, MARK		Srvc Supervisor: NICKLE, RYON	MBU ID Emp #: 454759

Activity Description	Date/Time	Cht #	Rate bbl/min	Volume bbl		Pressure psig		Comments
				Stage	Total	Tubing	Casing	
Call Out	06/22/2012 19:00							HES CEMENT CREW
Pre-Convoy Safety Meeting	06/22/2012 20:45							ALL HES CEMENT CREW
Crew Leave Yard	06/22/2012 21:00							
Arrive At Loc	06/22/2012 23:00							RIG RIGGING UP CASING CREW
Assessment Of Location Safety Meeting	06/23/2012 00:40							ALL HES CEMENT CREW
Other	06/23/2012 01:00							SPOT EQUIPMENT; 1 CEMENTERS F 550, 1 ELITE PUMPING UNIT, 1 660 BULK TRANSPORT, 1 400 BULK TRANSPORT
Pre-Rig Up Safety Meeting	06/23/2012 01:15							ALL HES CEMENT CREW
Pre-Job Safety Meeting	06/23/2012 03:00							ALL HES CEMENT CREW, RIG CREW, COMPANY REP, AVAILABLE 3RD PARTY EE'S
Start Job	06/23/2012 03:38							TD- 1245' TP- 1235' SHOE- 42' OH- 13.5" SURFACE CASING- 9.625" 32.3#/FT H-40 MUD- 10.3 PPG
Other	06/23/2012 03:38		2	2			51.0	FILL LINES, FRESH WATER
Activity Description	Date/Time	Cht #	Rate bbl/min	Volume bbl		Pressure psig		Comments
				Stage	Total	Tubing	Casing	

Pressure Test	06/23/2012 03:40							STALL OUT @ 1334 PSI, HELD FOR 30 SEC. PRESSURE UP TO 3022 PSI HELD FOR 3 MIN, PRESSURE DROP TO 2996 PSI
Pump Spacer 1	06/23/2012 03:46		4	20			114.0	FRESH WATER
Pump Lead Cement	06/23/2012 03:54		6	76.2			186.0	180 SKS; 12.3 PPG, 2.38 FT3/SK, 13.75 GAL/SK
Pump Tail Cement	06/23/2012 04:06		7	60.12			218.0	160 SKS; 12.8 PPG, 2.11 FT3/SK, 11.75 GAL/SK
Shutdown	06/23/2012 04:17							WASH UP ON TOP OF PLUG PER CO REP
Drop Top Plug	06/23/2012 04:22							CO REP VERIFIED PLUG LAUNCHED
Pump Displacement	06/23/2012 04:23		8	83.8			378.0	FRESH WATER
Slow Rate	06/23/2012 04:25		2	10			311.0	
Bump Plug	06/23/2012 04:47						918.0	
Check Floats	06/23/2012 04:50							FLOATS HELD, RETURNED 3/4 BBLS H2O
End Job	06/23/2012 04:51							PIPE WAS NOT MOVED, GOOD RETURNS THROUGHOUT, 25 BBLS CEMENT TO SURFACE
Post-Job Safety Meeting (Pre Rig-Down)	06/23/2012 04:55							ALL HES CEMENT CREW
Pre-Convoy Safety Meeting	06/23/2012 05:50							ALL HES CEMENT CREW
Crew Leave Location	06/23/2012 06:00							THANK YOU FOR USING HALLIBURTON CEMENTING, RYON NICKLE AND CREW

WPX - KP 44-18

SURFACE



1	START JOB	03:38:29	2	FILL LINES	03:38:49	3	PRESSURE TEST	03:40:33
4	H2O SPACER	03:46:38	5	LEAD CEMENT	03:54:14	6	TAIL CEMENT	04:06:49
7	SHUTDOWN	04:17:27	8	DROP TOP PLUG	04:22:52	9	PUMP DISPLACEMENT	04:23:07
10	SLOW RATE	04:25:11	11	BUMP PLUG	04:47:56	12	CHECK FLOATS	04:50:07
13	END JOB	04:51:12						

Customer: WPX ENERGY ROCKY MOUNTAIN LLC-EBUS	Job Date: 23-Jun-2012	Sales Order #: 9581185
Well Description: KP 44-18	Job Type: SURFACE	ADC Used: YES
Company Rep: GARY VALAD	Cement Supervisor: RYON NICKLE	Elite # / Operator: E2 / BEN ROSE

OptiCem v6.4.10
23-Jun-12 05:22