

CEMENT JOB REPORT



Shoe Test (Update Original Treatment Report for Primary Job)

Depth Drilled out of Shoe: 0 FT Target EMW: 0 LBS/GAL Actual EMW: 0 LBS/GAL
 Number of Times Tests Conducted: 0 Mud Weight When Test was Conducted: 0 LBS/GAL

Problems Before Job (I.E. Running Casing, Circulating Well, ETC)
 None

Problems During Job (I.E. Lost Returns, Equipment Failure, Bulk Delivery, Foaming, ETC)
 None

Problems After Job (I.E. Gas at Surface, Float Equipment Failed, ETC)
 None

PRESSURE/RATE DETAIL						EXPLANATION		
TIME HR:MIN.	PRESSURE - PSI		RATE BPM	Bbl. FLUID PUMPED	FLUID TYPE	SAFETY MEETING: BJ CREW <input checked="" type="checkbox"/> CO. REP. <input checked="" type="checkbox"/>		
	PIPE	ANNULUS				TEST LINES	CIRCULATING WELL - RIG <input checked="" type="checkbox"/> BJ	
00:15	0	0	0	0	N/A	Arrive on location, 76 miles, casers rigging up to run casing		
04:25	0	0	0	0	N/A	Spot trucks on location, pre-rig up safety meeting		
05:35	0	0	0	0	N/A	Pre-job safety meeting		
06:30	2322	0	0	0	WATER	Low pressure test - valve on manifold was bad, had to build one from scratch		
06:34	4216	0	0	0	WATER	High pressure test		
06:40	102	0	4.8	22	WATER	Dyed water spacer		
06:50	126	0	5.1	128	CEMENT	Batch-up, weigh, & pump 417 sx of PLC + 0.08% Static Free + 3% CaCl + 0.25 lbs/sk Cello Flake + 6% Bentonite @ 13 ppg		
07:20	102	0	3.9	36	CEMENT	Mix, weigh, & pump 138 sx of Type III + 0.08 lbs/sk Static Free + 1% CaCl + 0.25 lbs/sk Cello Flake @ 14.5 ppg		
07:30	0	0	0	0	N/A	Release plug		
07:38	2396	0	0	0	WATER	Low pressure test - Retest lines due to custom build manifold configuration		
07:35	77	0	2.4	3	WATER	Start displacement to pump plug from head and clear cement from lines for pressure test		
07:41	4041	0	0	0	WATER	High pressure test		
07:44	77	0	4.8	95	MUD	Continue displacement		
08:04	401	0	2.4	7	MUD	Rate change		
08:07	426	0	2.4	105	MUD	Bump plug to 1473 psi, 0.7 bbbls bled back, floats held, 50 bbbls cmt to surface		
08:15	0	0	0	0	N/A	Pre-rig down safety meeting		
BUMPED PLUG	PSI TO BUMP PLUG	TEST FLOAT EQUIP.	BBL.CMT RETURNS/ REVERSED	TOTAL BBL. PUMPED	PSI LEFT ON CSG	SPOT TOP OUT CEMENT	Service Supervisor Signature:	
Y N	426	Y N	50	291	0	Y [N]		

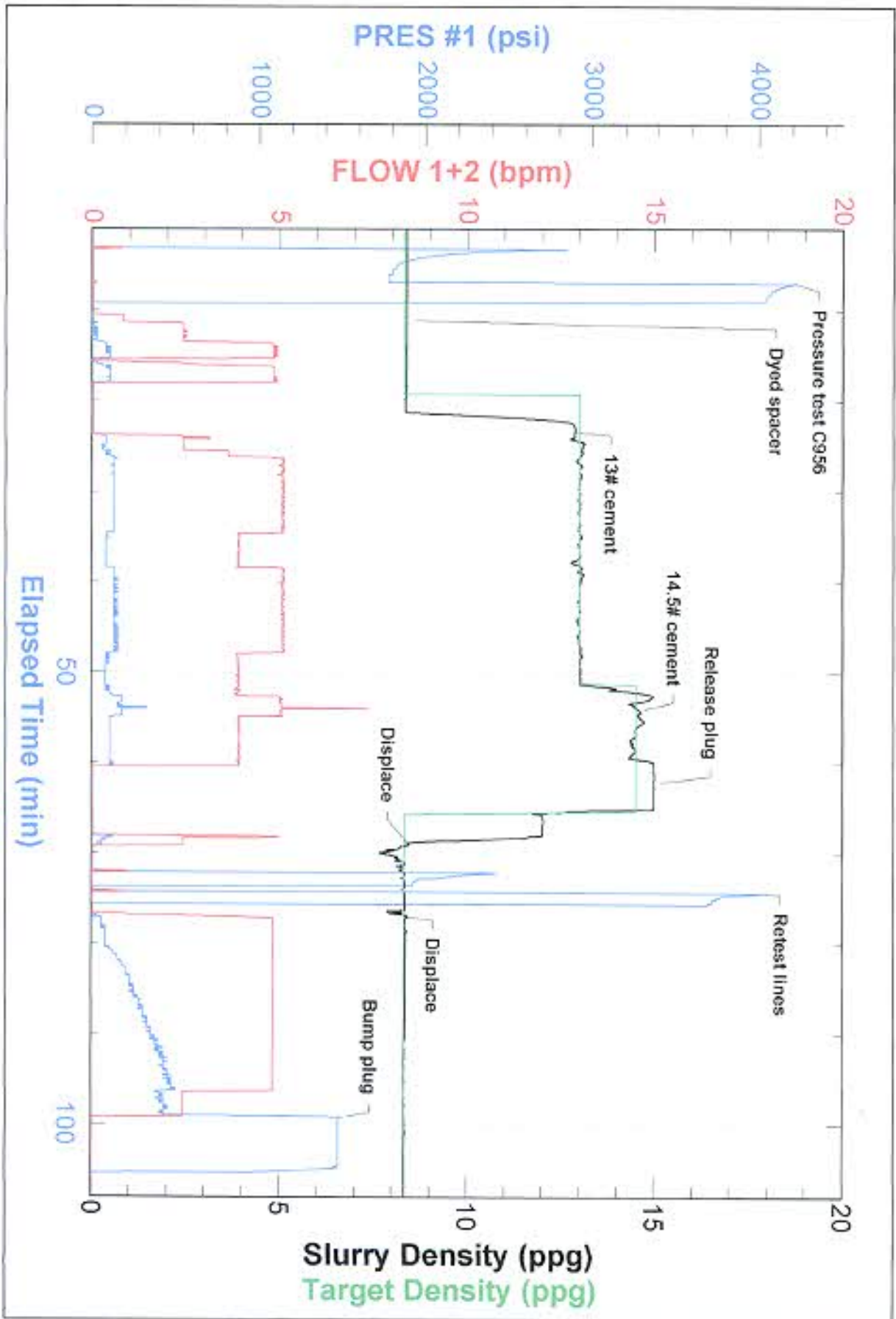


Bob [Signature]

214-593-6338



BJ Services JobMaster Program Version 3.50
Job Number: 1001916918
Customer: Carrizo
Well Name: Pergamos 1-4-44-7-60



FIELD RECEIPT NO. 1001916918



CUSTOMER		CARRIZO OIL & GAS		CREDIT APPROVAL NO.	PURCHASE ORDER NO.		CUSTOMER NUMBER		INVOICE NUMBER	
MAIL		STREET OR BOX NUMBER		CITY		STATE		ZIP CODE		
INVOICE TO :		1000 LOUISIANA ST. STE 1699		Houston		Texas		77002		
DATE WORK COMPLETED	MO.	DAY	YEAR	BHI REPRESENTATIVE	WELL API NO:	WELL TYPE :	WELL CLASS :			
06	18	2012	RYAN SULLIVAN	0612338220000	New Well	Oil				
DISTRICT		BUS. BRIGHTON		JOB DEPTH (ft)		WELL DEPTH (ft)				
WELL NAME AND NUMBER		PERGAMOS 1-444-7-60		TD WELL DEPTH (ft)		GAS USED ON JOB :				
WELL LOCATION :		LEGAL DESCRIPTION		COUNTY/PARISH		STATE				
4-7N-60W		Weld		Colorado		No Gas				
PRODUCT CODE	DESCRIPTION		UNIT OF MEASURE	QUANTITY	LIST PRICE UNIT	GROSS AMOUNT	% DISC.	NET AMOUNT		
100112	Calcium Chloride		lbs	1219	1.250	1,572.51	65%	550.38		
100120	Bentonite		lbs	2177	0.530	1,153.81	65%	403.83		
100295	Cello Flake		lbs	140	5.100	714.00	65%	249.90		
398224	Premium Life Cement		sacks	417	27.650	11,530.05	65%	4,035.52		
483019	FP-6L		gals	6	104.250	625.50	65%	218.93		
489632	Granulated Sugar		lbs	100	3.840	384.00	65%	134.40		
489680	Static Free		lbs	41	40.700	1,668.70	65%	564.05		
489703	Type III Cement		sacks	138	31.700	4,374.60	65%	1,531.11		
88720-1	9-5/8" Top Cem Plug, Nitrite cvt. Phen		ea	1	404.000	404.00	65%	141.40		
SUB-TOTAL FOR Product Material					22,427.17		65.00%	7,849.52		
A1S2	Personnel Per Diem Chrg - Cement Svc		ea	1	210.000	210.00	0%	210.00		
M100	Bulk Materials Blending Charge		cu ft	628	5.450	3,411.70	65%	1,194.10		
R798	Automatic Density System		job	1	1,990.000	1,990.00	65%	696.50		
SUB-TOTAL FOR Service Charges					5,611.70		62.57%	2,100.60		
<p>ARRIVE LOCATION : MO. 06 DAY 19 YEAR 2012 TIME 00:15</p> <p>CUSTOMER REP. Bob McNeese</p> <p>SEE LAST PAGE FOR GENERAL TERMS AND CONDITIONS</p> <p>CUSTOMER AUTHORIZED AGENT</p> <p>SERVICE ORDER: I AUTHORIZE WORK TO BEGIN PER SERVICE INSTRUCTIONS IN ACCORDANCE WITH THE TERMS AND CONDITIONS PRINTED ON THE LAST PAGE OF THIS FORM AND REPRESENT THAT I HAVE AUTHORITY TO ACCEPT AND SIGN THIS ORDER.</p> <p>SERVICE RECEIPT: I CERTIFY THAT THE MATERIALS AND SERVICES LISTED WERE RECEIVED AND ALL SERVICES PERFORMED IN A WORKMANLIKE MANNER.</p> <p>CUSTOMER AUTHORIZED AGENT</p> <p>BHI APPROVED</p> <p><i>Keith Stewart</i></p>										

FIELD RECEIPT NO. 1001916918



CUSTOMER		CARRIZO OIL & GAS		CREDIT APPROVAL NO.	PURCHASE ORDER NO.		CUSTOMER NUMBER		INVOICE NUMBER	
MAIL		STREET OR BOX NUMBER		CITY		STATE		ZIP CODE		
INVOICE TO :		1000 LOUISIANA ST, STE 1699		Houston		Texas		77002		
DATE WORK COMPLETED	MO.	DAY	YEAR	BH REPRESENTATIVE	WELL AP. NO.	WELL TYPE :		WELL CLASS :		
05	18	2012		RYAN SULLIVAN	05123338220000	New Well		Oil		
DISTRICT		BJS, BRIGHTON		JOB DEPTH (ft)		WELL DEPTH (ft)		GAS USED ON JOB :		
				1,425		1,407		No Gas		
WELL NAME AND NUMBER		PERGAMOS 1-4-44-7-60		LEGAL DESCRIPTION		COUNTRY/PARISH		JOB TYPE CODE :		
				4-7N-60W		Weld		Surface		
PRODUCT CODE	DESCRIPTION		UNIT OF MEASURE	QUANTITY	LIST PRICE UNIT	GROSS AMOUNT	% DISC.	NET AMOUNT		
F055A	Cement Pumping, 1001 - 2000 ft		4hrs	1	4,875.000	4,875.00	65%	1,706.25		
F098	Cement Pumping, Additional hrs		hrs	4	900.000	3,600.00	65%	1,260.00		
F090	Fuel per pump charge - cement		pump/hr	4	70.250	281.00	0%	281.00		
J050	Cement Head		job	1	830.000	830.00	65%	290.50		
J225	Data Acquisition, Cement, Standard		job	1	2,130.000	2,130.00	65%	745.50		
J390	Mileage, Heavy Vehicle		miles	152	11.850	1,801.20	65%	630.42		
J391	Mileage, Auto, Pick-Up or Treating Van		miles	152	6.700	1,018.40	65%	358.44		
SUB-TOTAL FOR Equipment					14,535.60		63.74%	5,270.11		
SUB-TOTAL FOR Freight/Delivery Charges					3,940			2,774.55		
SUB-TOTAL FOR Freight/Delivery Charges					7,827.28		65.00%	2,774.55		
FIELD ESTIMATE					50,501.75		64.37%	17,994.78		

Well: Pergasmos 1-4-44-7-60
 AFE: 311 180 034
 Code: 160-110
 Description: 958" CCS Cement
 Amount Approved: 412,924.38

Approved By: Bob McNeese
 DATE: 05/19/2012
 TIME: 00:15

SERVICE ORDER: I AUTHORIZE WORK TO BEGIN PER SERVICE INSTRUCTIONS IN ACCORDANCE WITH THE TERMS AND CONDITIONS PRINTED ON THE LAST PAGE OF THIS FORM AND REPRESENT THAT I HAVE AUTHORITY TO ACCEPT AND SIGN THIS ORDER.

CUSTOMER AUTHORIZED AGENT: Bob McNeese

SEE LAST PAGE FOR GENERAL TERMS AND CONDITIONS