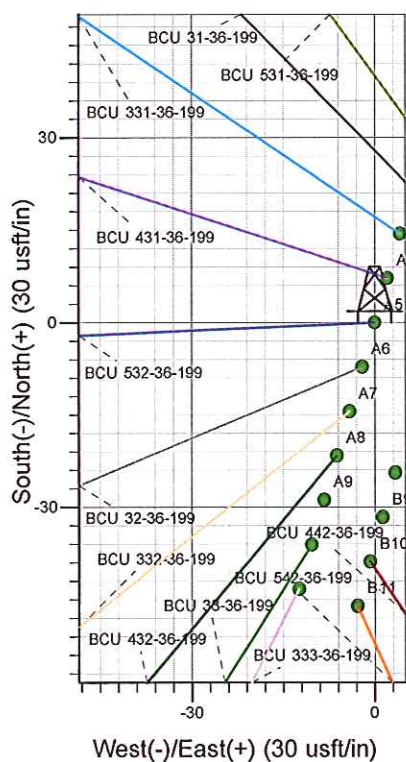
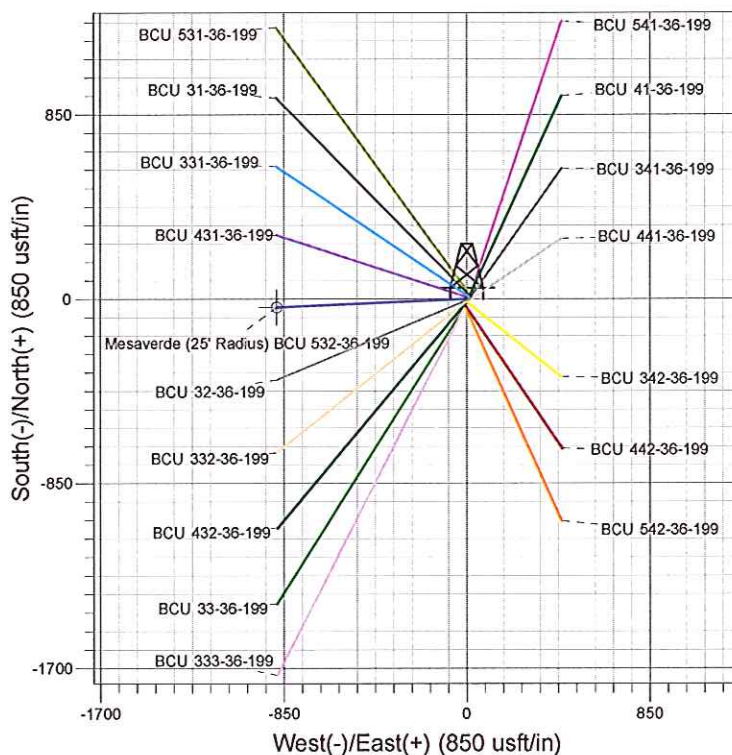
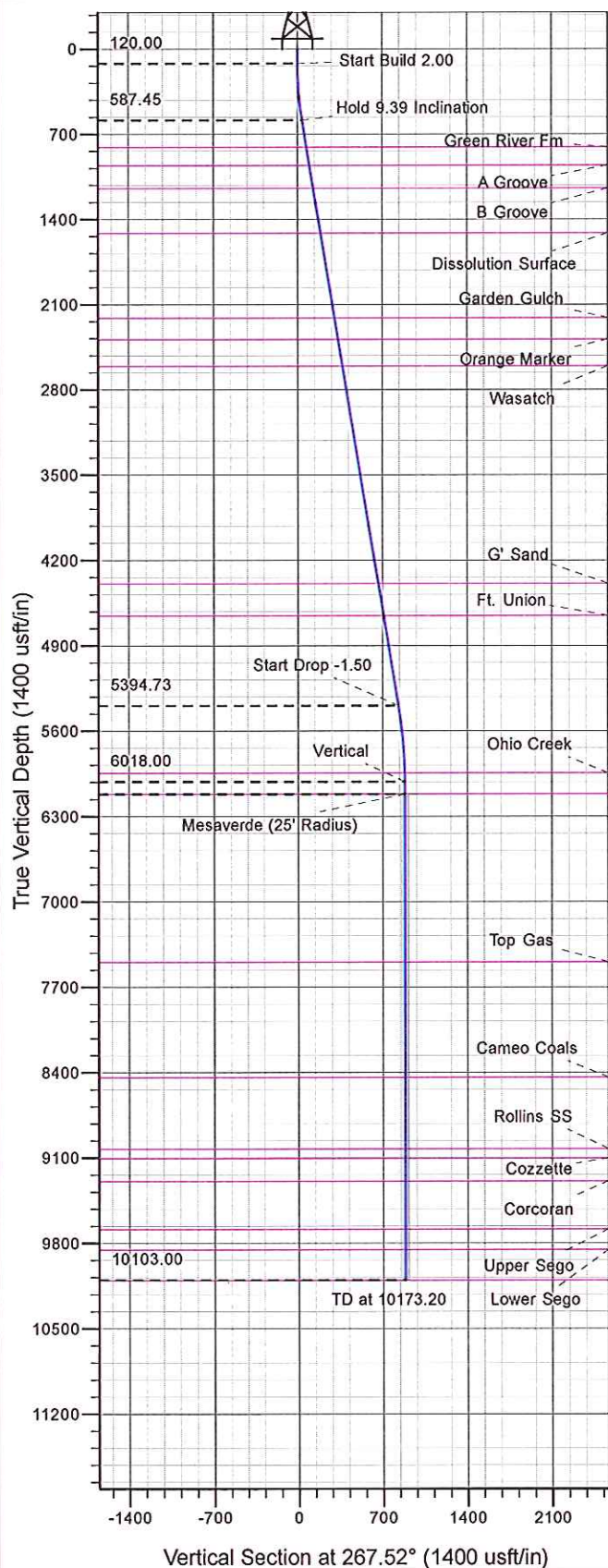




Well Name: BCU 532-36-199
 Surface Location: BCU 442-36-199
 North American Datum 1983 , US State Plane 1983, Colorado Central Zone
 Ground Elevation: 6868.00
 +N/-S +E/-W Northing Easting Latitude Longitude Slot
 0.00 0.00 1808113.50 2174527.00 40.01532 -108.44739 A5
 KELLY BUSHING @ 6889.00usft



Project: BC 36-01N-R99W
 Site: BCU 442-36-199
 Well: BCU 532-36-199
 Design #1 1Mar12 kjs



Azimuths to True North
 Magnetic North: 10.53°
 Magnetic Field
 Strength: 52393.3snT
 Dip Angle: 66.06°
 Date: 3/1/2012
 Model: IGRF2010

ANNOTATIONS

| MD | Inc | Azi | TVD | +N/-S | +E/-W | V/Sect | Departure | Annotation |
|----------|------|--------|----------|--------|---------|--------|-----------|-----------------------|
| 120.00 | 0.00 | 0.00 | 120.00 | 0.00 | 0.00 | 0.00 | 0.00 | Start Build 2.00 |
| 589.55 | 9.39 | 267.52 | 587.45 | -1.66 | -38.36 | 38.39 | 38.39 | Hold 9.39 Inclination |
| 5462.14 | 9.39 | 267.52 | 5394.73 | -36.02 | -832.68 | 833.46 | 833.46 | Start Drop -1.50 |
| 6088.20 | 0.00 | 0.00 | 6018.00 | -38.23 | -883.83 | 884.65 | 884.65 | Vertical |
| 6188.20 | 0.00 | 0.00 | 6118.00 | -38.23 | -883.83 | 884.65 | 884.65 | Mesaverde |
| 10173.20 | 0.00 | 0.00 | 10103.00 | -38.23 | -883.83 | 884.65 | 884.65 | TD at 10173.20 |



PICEANCE HL NAD 83

BC 36-01N-R99W

BCU 442-36-199

BCU 532-36-199 - Slot A5

Wellbore #1

Plan: Design #1 1Mar12 kjs

Standard Planning Report - Geographic

31 August, 2012



WPX Energy
Planning Report - Geographic

| | | | |
|-----------|----------------------|------------------------------|-------------------------------|
| Database: | COMPASS-PICEANCE | Local Co-ordinate Reference: | Well BCU 532-36-199 - Slot A5 |
| Company: | PICEANCE HL NAD 83 | TVD Reference: | KELLY BUSHING @ 6889.00usft |
| Project: | BC 36-01N-R99W | MD Reference: | KELLY BUSHING @ 6889.00usft |
| Site: | BCU 442-36-199 | North Reference: | True |
| Well: | BCU 532-36-199 | Survey Calculation Method: | Minimum Curvature |
| Wellbore: | Wellbore #1 | | |
| Design: | Design #1 1Mar12 kjs | | |

| | | | |
|-------------|--------------------------------|---------------|----------------|
| Project | BC 36-01N-R99W, Rio Blanco, CO | | |
| Map System: | US State Plane 1983 | System Datum: | Mean Sea Level |
| Geo Datum: | North American Datum 1983 | | |
| Map Zone: | Colorado Central Zone | | |

| | | | | | |
|-----------------------|-----------|----------------|-------------------|-------------------|------------|
| Site | | BCU 442-36-199 | | | |
| Site Position: | | Northing: | 1,808,142.00 usft | Latitude: | 40.01540 |
| From: | Map | Easting: | 2,174,536.30 usft | Longitude: | -108.44736 |
| Position Uncertainty: | 0.00 usft | Slot Radius: | 13.200 in | Grid Convergence: | -1.86 ° |

| | | | | | | |
|----------------------|--------------------------|---------------------|-----------|-------------------|---------------|------------|
| Well | BCU 532-36-199 - Slot A5 | | | | | |
| Well Position | +N/-S | 0.00 usft | Northing: | 1,808,113.50 usft | Latitude: | 40.01532 |
| | +E/-W | 0.00 usft | Easting: | 2,174,527.00 usft | Longitude: | -108.44739 |
| Position Uncertainty | 0.00 usft | Wellhead Elevation: | | Ground Level: | 6,868.00 usft | |

| | | | | | |
|-----------|-------------|-------------|-----------------|---------------|---------------------|
| Wellbore | Wellbore #1 | | | | |
| Magnetics | Model Name | Sample Date | Declination (°) | Dip Angle (°) | Field Strength (nT) |
| | IGRF2010 | 3/1/2012 | 10.53 | 66.06 | 52,393 |

| | | | | |
|-------------------|----------------------------|-----------------|-----------------|------------------|
| Design | Design #1 1Mar12 kjs | | | |
| Audit Notes: | | | | |
| Version: | Phase: | PLAN | Tie On Depth: | 0.00 |
| Vertical Section: | Depth From (TVD) (usft) | +N/-S (usft) | +E/-W (usft) | Direction (°) |
| | 0.00 | 0.00 | 0.00 | 267.52 |

| | | | | | | | | | | |
|-----------------------------|--------------------|----------------|-----------------------------|-----------------|-----------------|-------------------------------|------------------------------|-----------------------------|------------|----------------------|
| Plan Sections | | | | | | | | | | |
| Measured Depth (usft) | Inclination (°) | Azimuth (°) | Vertical Depth (usft) | +N/-S (usft) | +E/-W (usft) | Dogleg Rate (°/100usft) | Build Rate (°/100usft) | Turn Rate (°/100usft) | TFO (°) | Target |
| 0.00 | 0.00 | 0.00 | 0.00 | 0.00 | 0.00 | 0.00 | 0.00 | 0.00 | 0.00 | |
| 120.00 | 0.00 | 0.00 | 120.00 | 0.00 | 0.00 | 0.00 | 0.00 | 0.00 | 0.00 | |
| 589.55 | 9.39 | 267.52 | 587.45 | -1.66 | -38.36 | 2.00 | 2.00 | 0.00 | 267.52 | |
| 5,462.14 | 9.39 | 267.52 | 5,394.73 | -36.02 | -832.68 | 0.00 | 0.00 | 0.00 | 0.00 | |
| 6,088.20 | 0.00 | 0.00 | 6,018.00 | -38.23 | -883.83 | 1.50 | -1.50 | 0.00 | 180.00 | |
| 6,188.20 | 0.00 | 0.00 | 6,118.00 | -38.23 | -883.83 | 0.00 | 0.00 | 0.00 | 0.00 | Mesaverde (25' Radiu |
| 10,173.20 | 0.00 | 0.00 | 10,103.00 | -38.23 | -883.83 | 0.00 | 0.00 | 0.00 | 0.00 | |



WPX Energy
Planning Report - Geographic

Database: COMPASS-PICEANCE
Company: PICEANCE HL NAD 83
Project: BC 36-01N-R99W
Site: BCU 442-36-199
Well: BCU 532-36-199
Wellbore: Wellbore #1
Design: Design #1 1Mar12 kjs

Local Co-ordinate Reference: Well BCU 532-36-199 - Slot A5
TVD Reference: KELLY BUSHING @ 6889.00usft
MD Reference: KELLY BUSHING @ 6889.00usft
North Reference: True
Survey Calculation Method: Minimum Curvature

Planned Survey

| Measured Depth (usft) | Inclination (°) | Azimuth (°) | Vertical Depth (usft) | +N/-S (usft) | +E/-W (usft) | Map Northing (usft) | Map Easting (usft) | Latitude | Longitude |
|------------------------------|--------------------|----------------|-----------------------------|-----------------|-----------------|---------------------------|--------------------------|----------|------------|
| 0.00 | 0.00 | 0.00 | 0.00 | 0.00 | 0.00 | 1,808,113.50 | 2,174,527.00 | 40.01532 | -108.44739 |
| 120.00 | 0.00 | 0.00 | 120.00 | 0.00 | 0.00 | 1,808,113.50 | 2,174,527.00 | 40.01532 | -108.44739 |
| Start Build 2.00 | | | | | | | | | |
| 500.00 | 7.60 | 267.52 | 498.89 | -1.09 | -25.14 | 1,808,113.23 | 2,174,501.83 | 40.01532 | -108.44748 |
| 589.55 | 9.39 | 267.52 | 587.45 | -1.66 | -38.36 | 1,808,113.09 | 2,174,488.61 | 40.01532 | -108.44753 |
| Hold 9.39 Inclination | | | | | | | | | |
| 810.05 | 9.39 | 267.52 | 805.00 | -3.21 | -74.30 | 1,808,112.70 | 2,174,452.63 | 40.01531 | -108.44766 |
| Green River Fm | | | | | | | | | |
| 963.11 | 9.39 | 267.52 | 956.00 | -4.29 | -99.26 | 1,808,112.43 | 2,174,427.66 | 40.01531 | -108.44775 |
| A Groove | | | | | | | | | |
| 1,000.00 | 9.39 | 267.52 | 992.40 | -4.55 | -105.27 | 1,808,112.36 | 2,174,421.64 | 40.01531 | -108.44777 |
| 1,155.69 | 9.39 | 267.52 | 1,146.00 | -5.65 | -130.65 | 1,808,112.09 | 2,174,396.23 | 40.01531 | -108.44786 |
| B Groove | | | | | | | | | |
| 1,500.00 | 9.39 | 267.52 | 1,485.70 | -8.08 | -186.78 | 1,808,111.48 | 2,174,340.06 | 40.01530 | -108.44806 |
| 1,528.69 | 9.39 | 267.52 | 1,514.00 | -8.28 | -191.46 | 1,808,111.43 | 2,174,335.38 | 40.01530 | -108.44808 |
| Dissolution Surface | | | | | | | | | |
| 2,000.00 | 9.39 | 267.52 | 1,979.00 | -11.60 | -268.29 | 1,808,110.60 | 2,174,258.48 | 40.01529 | -108.44835 |
| 2,233.13 | 9.39 | 267.52 | 2,209.00 | -13.25 | -306.29 | 1,808,110.19 | 2,174,220.44 | 40.01529 | -108.44849 |
| Garden Gulch | | | | | | | | | |
| 2,413.55 | 9.39 | 267.52 | 2,387.00 | -14.52 | -335.70 | 1,808,109.88 | 2,174,191.00 | 40.01528 | -108.44859 |
| Orange Marker | | | | | | | | | |
| 2,500.00 | 9.39 | 267.52 | 2,472.30 | -15.13 | -349.80 | 1,808,109.72 | 2,174,176.89 | 40.01528 | -108.44864 |
| 2,636.53 | 9.39 | 267.52 | 2,607.00 | -16.09 | -372.05 | 1,808,109.48 | 2,174,154.62 | 40.01528 | -108.44872 |
| Wasatch | | | | | | | | | |
| 3,000.00 | 9.39 | 267.52 | 2,965.60 | -18.66 | -431.31 | 1,808,108.84 | 2,174,095.31 | 40.01527 | -108.44893 |
| 3,143.33 | 9.39 | 267.52 | 3,107.00 | -19.67 | -454.67 | 1,808,108.59 | 2,174,071.93 | 40.01527 | -108.44902 |
| 9 5/8" | | | | | | | | | |
| 3,500.00 | 9.39 | 267.52 | 3,458.89 | -22.18 | -512.82 | 1,808,107.97 | 2,174,013.73 | 40.01526 | -108.44923 |
| 4,000.00 | 9.39 | 267.52 | 3,952.19 | -25.71 | -594.33 | 1,808,107.09 | 2,173,932.15 | 40.01525 | -108.44952 |
| 4,442.74 | 9.39 | 267.52 | 4,389.00 | -28.83 | -666.50 | 1,808,106.31 | 2,173,859.91 | 40.01524 | -108.44977 |
| G' Sand | | | | | | | | | |
| 4,500.00 | 9.39 | 267.52 | 4,445.49 | -29.23 | -675.83 | 1,808,106.21 | 2,173,850.57 | 40.01524 | -108.44981 |
| 4,711.34 | 9.39 | 267.52 | 4,654.00 | -30.72 | -710.29 | 1,808,105.83 | 2,173,816.09 | 40.01524 | -108.44993 |
| Ft. Union | | | | | | | | | |
| 5,000.00 | 9.39 | 267.52 | 4,938.79 | -32.76 | -757.34 | 1,808,105.33 | 2,173,768.99 | 40.01523 | -108.45010 |
| 5,462.14 | 9.39 | 267.52 | 5,394.73 | -36.02 | -832.68 | 1,808,104.51 | 2,173,693.59 | 40.01522 | -108.45037 |
| Start Drop -1.50 | | | | | | | | | |
| 5,500.00 | 8.82 | 267.52 | 5,432.12 | -36.28 | -838.67 | 1,808,104.45 | 2,173,687.60 | 40.01522 | -108.45039 |
| 6,000.00 | 1.32 | 267.52 | 5,929.81 | -38.19 | -882.81 | 1,808,103.97 | 2,173,643.42 | 40.01522 | -108.45055 |
| 6,016.20 | 1.08 | 267.52 | 5,946.00 | -38.20 | -883.15 | 1,808,103.97 | 2,173,643.08 | 40.01522 | -108.45055 |
| Ohio Creek | | | | | | | | | |
| 6,088.20 | 0.00 | 0.00 | 6,018.00 | -38.23 | -883.83 | 1,808,103.96 | 2,173,642.40 | 40.01522 | -108.45055 |
| Vertical | | | | | | | | | |
| 6,188.20 | 0.00 | 0.00 | 6,118.00 | -38.23 | -883.83 | 1,808,103.96 | 2,173,642.40 | 40.01522 | -108.45055 |
| Mesaverde - Mesaverde | | | | | | | | | |
| 6,500.00 | 0.00 | 0.00 | 6,429.80 | -38.23 | -883.83 | 1,808,103.96 | 2,173,642.40 | 40.01522 | -108.45055 |
| 7,000.00 | 0.00 | 0.00 | 6,929.80 | -38.23 | -883.83 | 1,808,103.96 | 2,173,642.40 | 40.01522 | -108.45055 |
| 7,500.00 | 0.00 | 0.00 | 7,429.80 | -38.23 | -883.83 | 1,808,103.96 | 2,173,642.40 | 40.01522 | -108.45055 |
| 7,565.20 | 0.00 | 0.00 | 7,495.00 | -38.23 | -883.83 | 1,808,103.96 | 2,173,642.40 | 40.01522 | -108.45055 |
| Top Gas | | | | | | | | | |
| 8,000.00 | 0.00 | 0.00 | 7,929.80 | -38.23 | -883.83 | 1,808,103.96 | 2,173,642.40 | 40.01522 | -108.45055 |
| 8,500.00 | 0.00 | 0.00 | 8,429.80 | -38.23 | -883.83 | 1,808,103.96 | 2,173,642.40 | 40.01522 | -108.45055 |



WPX Energy
Planning Report - Geographic

| | | | |
|-----------|----------------------|------------------------------|-------------------------------|
| Database: | COMPASS-PICEANCE | Local Co-ordinate Reference: | Well BCU 532-36-199 - Slot A5 |
| Company: | PICEANCE HL NAD 83 | TVD Reference: | KELLY BUSHING @ 6889.00usft |
| Project: | BC 36-01N-R99W | MD Reference: | KELLY BUSHING @ 6889.00usft |
| Site: | BCU 442-36-199 | North Reference: | True |
| Well: | BCU 532-36-199 | Survey Calculation Method: | Minimum Curvature |
| Wellbore: | Wellbore #1 | | |
| Design: | Design #1 1Mar12 kjs | | |

Planned Survey

| Measured Depth (usft) | Inclination (°) | Azimuth (°) | Vertical Depth (usft) | +N/-S (usft) | +E/-W (usft) | Map Northing (usft) | Map Easting (usft) | Latitude | Longitude |
|----------------------------|-----------------|-------------|-----------------------|--------------|--------------|---------------------|--------------------|----------|------------|
| 8,510.20 | 0.00 | 0.00 | 8,440.00 | -38.23 | -883.83 | 1,808,103.96 | 2,173,642.40 | 40.01522 | -108.45055 |
| Cameo Coals | | | | | | | | | |
| 9,000.00 | 0.00 | 0.00 | 8,929.80 | -38.23 | -883.83 | 1,808,103.96 | 2,173,642.40 | 40.01522 | -108.45055 |
| 9,098.20 | 0.00 | 0.00 | 9,028.00 | -38.23 | -883.83 | 1,808,103.96 | 2,173,642.40 | 40.01522 | -108.45055 |
| Rollins SS | | | | | | | | | |
| 9,175.20 | 0.00 | 0.00 | 9,105.00 | -38.23 | -883.83 | 1,808,103.96 | 2,173,642.40 | 40.01522 | -108.45055 |
| Cozzette | | | | | | | | | |
| 9,360.20 | 0.00 | 0.00 | 9,290.00 | -38.23 | -883.83 | 1,808,103.96 | 2,173,642.40 | 40.01522 | -108.45055 |
| Corcoran | | | | | | | | | |
| 9,500.00 | 0.00 | 0.00 | 9,429.80 | -38.23 | -883.83 | 1,808,103.96 | 2,173,642.40 | 40.01522 | -108.45055 |
| 9,755.20 | 0.00 | 0.00 | 9,685.00 | -38.23 | -883.83 | 1,808,103.96 | 2,173,642.40 | 40.01522 | -108.45055 |
| Upper Sego | | | | | | | | | |
| 9,923.20 | 0.00 | 0.00 | 9,853.00 | -38.23 | -883.83 | 1,808,103.96 | 2,173,642.40 | 40.01522 | -108.45055 |
| Lower Sego | | | | | | | | | |
| 10,000.00 | 0.00 | 0.00 | 9,929.80 | -38.23 | -883.83 | 1,808,103.96 | 2,173,642.40 | 40.01522 | -108.45055 |
| 10,173.20 | 0.00 | 0.00 | 10,103.00 | -38.23 | -883.83 | 1,808,103.96 | 2,173,642.40 | 40.01522 | -108.45055 |
| TD at 10173.20 - TD | | | | | | | | | |

Design Targets

| Target Name | Dip Angle (°) | Dip Dir. (°) | TVD (usft) | +N/-S (usft) | +E/-W (usft) | Northing (usft) | Easting (usft) | Latitude | Longitude |
|---------------------------|---------------|--------------|------------|--------------|--------------|-----------------|----------------|----------|------------|
| - hit/miss target | | | | | | | | | |
| - Shape | | | | | | | | | |
| Mesaverde (25' Radius) | 0.00 | 0.00 | 6,118.00 | -38.23 | -883.83 | 1,808,103.96 | 2,173,642.40 | 40.01522 | -108.45055 |
| - plan hits target center | | | | | | | | | |
| - Circle (radius 25.00) | | | | | | | | | |

Casing Points

| Measured Depth (usft) | Vertical Depth (usft) | Name | Casing Diameter (in) | Hole Diameter (in) |
|-----------------------|-----------------------|--------|----------------------|--------------------|
| 3,143.33 | 3,107.00 | 9 5/8" | 9.625 | 14.750 |



WPX Energy
Planning Report - Geographic

| | | | |
|------------------|----------------------|-------------------------------------|-------------------------------|
| Database: | COMPASS-PICEANCE | Local Co-ordinate Reference: | Well BCU 532-36-199 - Slot A5 |
| Company: | PICEANCE HL NAD 83 | TVD Reference: | KELLY BUSHING @ 6889.00usft |
| Project: | BC 36-01N-R99W | MD Reference: | KELLY BUSHING @ 6889.00usft |
| Site: | BCU 442-36-199 | North Reference: | True |
| Well: | BCU 532-36-199 | Survey Calculation Method: | Minimum Curvature |
| Wellbore: | Wellbore #1 | | |
| Design: | Design #1 1Mar12 kjs | | |

| Formations | | | | | | |
|-----------------------|-----------------------|---------------------|-----------|---------|-------------------|--|
| Measured Depth (usft) | Vertical Depth (usft) | Name | Lithology | Dip (°) | Dip Direction (°) | |
| 810.05 | 805.00 | Green River Fm | | | | |
| 963.11 | 956.00 | A Groove | | | | |
| 1,155.69 | 1,146.00 | B Groove | | | | |
| 1,528.69 | 1,514.00 | Dissolution Surface | | | | |
| 2,233.13 | 2,209.00 | Garden Gulch | | | | |
| 2,413.55 | 2,387.00 | Orange Marker | | | | |
| 2,636.53 | 2,607.00 | Wasatch | | | | |
| 4,442.74 | 4,389.00 | G' Sand | | | | |
| 4,711.34 | 4,654.00 | Ft. Union | | | | |
| 6,016.20 | 5,946.00 | Ohio Creek | | | | |
| 6,188.20 | 6,118.00 | Mesaverde | | | | |
| 7,565.20 | 7,495.00 | Top Gas | | | | |
| 8,510.20 | 8,440.00 | Cameo Coals | | | | |
| 9,098.20 | 9,028.00 | Rollins SS | | | | |
| 9,175.20 | 9,105.00 | Cozzette | | | | |
| 9,360.20 | 9,290.00 | Corcoran | | | | |
| 9,755.20 | 9,685.00 | Upper Sego | | | | |
| 9,923.20 | 9,853.00 | Lower Sego | | | | |
| 10,173.20 | 10,103.00 | TD | | | | |

| Plan Annotations | | | | | |
|-----------------------|-----------------------|-------------------|--------------|-----------------------|--|
| Measured Depth (usft) | Vertical Depth (usft) | Local Coordinates | | | |
| | | +N/-S (usft) | +E/-W (usft) | Comment | |
| 120.00 | 120.00 | 0.00 | 0.00 | Start Build 2.00 | |
| 589.55 | 587.45 | -1.66 | -38.36 | Hold 9.39 Inclination | |
| 5,462.14 | 5,394.73 | -36.02 | -832.68 | Start Drop -1.50 | |
| 6,088.20 | 6,018.00 | -38.23 | -883.83 | Vertical | |
| 6,188.20 | 6,118.00 | -38.23 | -883.83 | Mesaverde | |
| 10,173.20 | 10,103.00 | -38.23 | -883.83 | TD at 10173.20 | |