

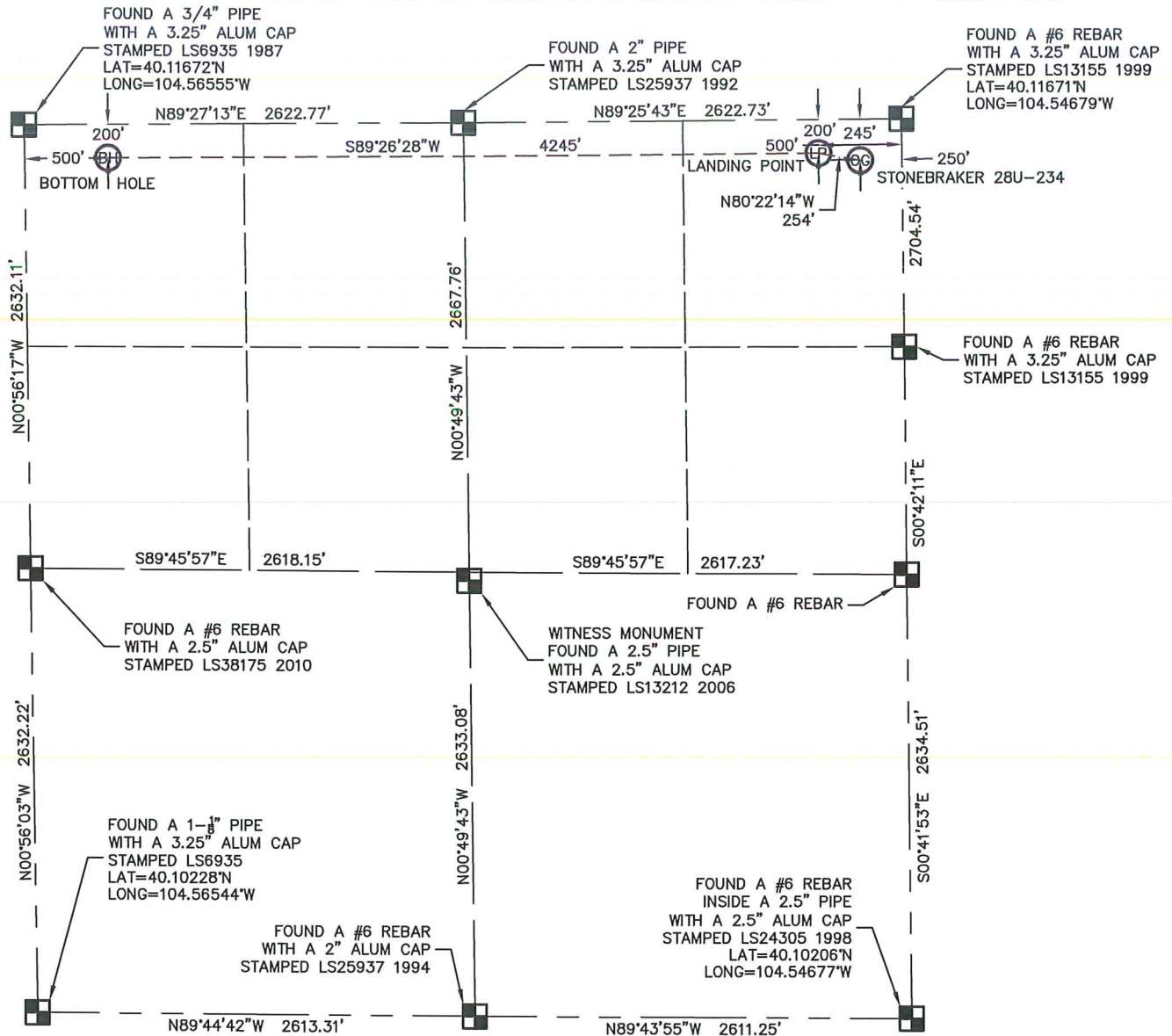
# KING SURVEYORS, INC. 650 E. GARDEN DR. WINDSOR, CO 80550

## WELL LOCATION CERTIFICATE

### STONEBRAKER 28U-234

THIS MAP DOES NOT REPRESENT A BOUNDARY SURVEY

SECTION: 28  
TOWNSHIP: 2N  
RANGE: 64W



In accordance with a request from MAC NEUMANN with PDC ENERGY, INC.

King Surveyors Inc. has determined the surface location of the STONEBRAKER 28U-234 to be 245' from the NORTH line and 250' from the EAST line, the landing point to be 200' from the NORTH line and 500' from the EAST line and the bottom hole to be 200' from the NORTH line and 500' from the WEST line, as measured at right angles, from the section lines of Section 28, Township 2 North, Range 64 West of the Sixth Principal Meridian, County of Weld, State of Colorado.

I hereby state that this Well Location Certificate was prepared by me, or under my direct supervision, that the fieldwork was completed on 6-19-2012, for and on behalf of PDC ENERGY, INC., that this is not a Land Survey Plat or an Improvement Survey Plat, and that it is not to be relied upon for establishment of fence, building, or other future improvement lines.

SURFACE LOCATION  
LATITUDE: 40.11604°N  
LONGITUDE: 104.54769°W  
PDOP: 1.0  
ELEV: 4963'  
1/4, 1/4: NE1/4 NE1/4  
NEAREST PROPERTY LINE: 245' NORTH

LANDING POINT  
LATITUDE: 40.11616°N  
LONGITUDE: 104.54858°W

BOTTOM HOLE  
LATITUDE: 40.11617°N  
LONGITUDE: 104.56375°W

#### NOTES:

- 1) Bearings shown are Grid Bearings of the Colorado State Plane Coordinate System, North Zone, North American Datum 1983/2007. The lineal dimensions as contained herein are based upon the "U.S. Survey Foot."
- 2) Ground elevations are based on an observed GPS elevation (NAVD 1988 DATUM).
- 3) NEAREST EXISTING WELL: STONEBRAKER 42-28 1760' SOUTH
- 4) IMPROVEMENTS: See LOCATION DRAWING for all visible improvements within 400' of the disturbed area.
- 5) SURFACE USE: CROP FIELD
- 6) FIELD OPERATOR: BEN ADSIT

#### NOTE

According to Colorado law, you must commence any legal action based upon any defect in this W.L.C. within three years after you discover such defect. In no event, may any action based upon any defect in this survey be commenced more than ten years after the date of the certificate shown hereon. (13-80-105 C.R.S.)

#### LEGEND

- = FOUND ALIQUOT MONUMENT AS DESCRIBED
- = CALCULATED POSITION
- = SET ALIQUOT MONUMENT AS DESCRIBED

*Michael Chad Dilka* 6/26/2012  
Michael Chad Dilka - On Behalf Of King Surveyors, Inc.  
Colorado Licensed Professional Land Surveyor #38106

PROJECT#: 2012245