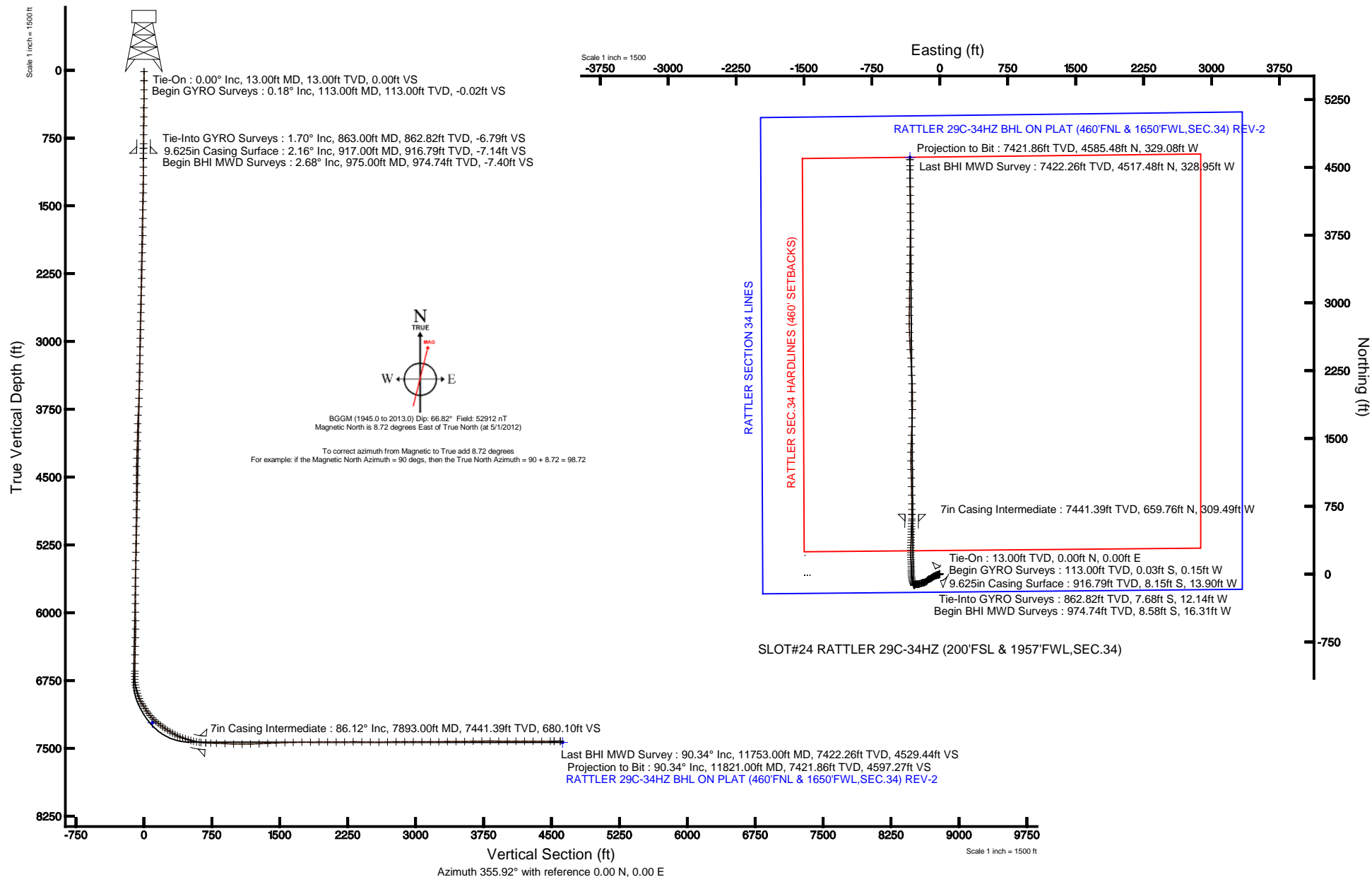


Location:	COLORADO	Slot:	SLOT#24 RATTLER 29C-34HZ (200'FSL & 1957'FWL, SEC.34)
Field:	WELD COUNTY (KERR MCGEE)	Well:	RATTLER 29C-34HZ
Facility:	SEC.34-T3N-R66W	Wellbore:	RATTLER 29C-34HZ PWB

Plot reference wellpath is RATTLER 29C-34HZ (REV-C.0) PWP	
True vertical depths are referenced to ENSIGN 145 (RKB)	Grid System: NAD83 / Lambert Colorado SP, Northern Zone (501), US feet
Measured depths are referenced to ENSIGN 145 (RKB)	North Reference: True north
ENSIGN 145 (RKB) to Mean Sea Level: 5003 feet	Scale: True distance
Mean Sea Level to Mud line (At Slot: SLOT#24 RATTLER 29C-34HZ (200'FSL & 195'FWL,SEC.34): 0 feet	Depths are in feet
Coordinates are in feet referenced to Slot	Created by: wilsie02 on 5/29/2012





Actual Wellpath Report

RATTLER 29C-34HZ AWP

Page 1 of 7



REFERENCE WELLPATH IDENTIFICATION			
Operator	KERR-MCGEE OIL & GAS ONSHORE LP	Slot	SLOT#24 RATTLER 29C-34HZ (200'FSL & 1957'FWL,SEC.34)
Area	COLORADO	Well	RATTLER 29C-34HZ
Field	WELD COUNTY (KERR MCGEE)	Wellbore	RATTLER 29C-34HZ AWB
Facility	SEC.34-T3N-R66W		

REPORT SETUP INFORMATION			
Projection System	NAD83 / Lambert Colorado SP, Northern Zone (501), US feet	Software System	WellArchitect® 3.0.2
North Reference	True	User	Wilsjef02
Scale	0.999958	Report Generated	5/29/2012 at 09:35:44
Convergence at slot	0.47° East	Database/Source file	WellArchitectDB/RATTLER_29C-34HZ_AWB.xml

WELLPATH LOCATION						
	Local coordinates		Grid coordinates		Geographic coordinates	
	North[ft]	East[ft]	Easting[US ft]	Northing[US ft]	Latitude	Longitude
Slot Location	-1723.10	1304.71	3205178.10	1307415.75	40°10'29.712"N	104°45'56.632"W
Facility Reference Pt			3203859.31	1309127.97	40°10'46.740"N	104°46'13.440"W
Field Reference Pt			3197771.84	1268891.29	40°04'09.600"N	104°47'36.000"W

WELLPATH DATUM			
Calculation method	Minimum curvature	ENSIGN 145 (RKB) to Facility Vertical Datum	5003.00ft
Horizontal Reference Pt	Slot	ENSIGN 145 (RKB) to Mean Sea Level	5003.00ft
Vertical Reference Pt	ENSIGN 145 (RKB)	ENSIGN 145 (RKB) to Mud Line at Slot (SLOT#24 RATTLER 29C-34HZ (200'FSL & 1957'FWL,SEC.34))	5003.00ft
MD Reference Pt	ENSIGN 145 (RKB)	Section Origin	N 0.00, E 0.00 ft
Field Vertical Reference	Mean Sea Level	Section Azimuth	355.90°



Actual Wellpath Report

RATTLER 29C-34HZ AWP

Page 2 of 7



REFERENCE WELLPATH IDENTIFICATION

Operator	KERR-MCGEE OIL & GAS ONSHORE LP	Slot	SLOT#24 RATTLER 29C-34HZ (200'FSL & 1957'FWL,SEC.34)
Area	COLORADO	Well	RATTLER 29C-34HZ
Field	WELD COUNTY (KERR MCGEE)	Wellbore	RATTLER 29C-34HZ AWB
Facility	SEC.34-T3N-R66W		

WELLPATH DATA (154 stations) † = interpolated/extrapolated station

MD [ft]	Inclination [°]	Azimuth [°]	TVD [ft]	Vert Sect [ft]	North [ft]	East [ft]	Latitude	Longitude	DLS [°/100ft]	Comments
0.00†	0.000	257.650	0.00	0.00	0.00	0.00	40°10'29.712"N	104°45'56.632"W	0.00	
13.00	0.000	257.650	13.00	0.00	0.00	0.00	40°10'29.712"N	104°45'56.632"W	0.00	Tie-On
113.00	0.180	257.650	113.00	-0.02	-0.03	-0.15	40°10'29.712"N	104°45'56.634"W	0.18	Begin GYRO Surveys
213.00	0.650	195.340	213.00	-0.58	-0.61	-0.46	40°10'29.706"N	104°45'56.638"W	0.59	
313.00	0.450	219.380	312.99	-1.40	-1.46	-0.86	40°10'29.698"N	104°45'56.643"W	0.30	
413.00	0.990	229.590	412.98	-2.20	-2.33	-1.76	40°10'29.689"N	104°45'56.655"W	0.55	
513.00	1.320	228.890	512.96	-3.40	-3.65	-3.29	40°10'29.676"N	104°45'56.674"W	0.33	
613.00	1.340	242.850	612.94	-4.55	-4.94	-5.20	40°10'29.663"N	104°45'56.699"W	0.32	
713.00	1.630	240.440	712.90	-5.62	-6.17	-7.47	40°10'29.651"N	104°45'56.728"W	0.30	
813.00	2.130	258.170	812.85	-6.48	-7.25	-10.53	40°10'29.640"N	104°45'56.768"W	0.76	
863.00	1.700	251.800	862.82	-6.79	-7.68	-12.14	40°10'29.636"N	104°45'56.788"W	0.96	Tie-Into GYRO Surveys
975.00	2.680	261.610	974.74	-7.39	-8.58	-16.31	40°10'29.627"N	104°45'56.842"W	0.93	Begin BHI MWD Surveys
1070.00	2.500	264.550	1069.64	-7.60	-9.10	-20.57	40°10'29.622"N	104°45'56.897"W	0.24	
1165.00	2.710	265.610	1164.54	-7.66	-9.47	-24.87	40°10'29.618"N	104°45'56.952"W	0.23	
1260.00	2.040	252.170	1259.46	-8.07	-10.16	-28.72	40°10'29.612"N	104°45'57.002"W	0.91	
1355.00	2.490	240.000	1354.39	-9.38	-11.71	-32.12	40°10'29.596"N	104°45'57.046"W	0.69	
1450.00	2.360	237.490	1449.30	-11.21	-13.79	-35.56	40°10'29.576"N	104°45'57.090"W	0.18	
1544.00	2.590	241.960	1543.22	-12.99	-15.83	-39.06	40°10'29.556"N	104°45'57.135"W	0.32	
1639.00	2.630	250.800	1638.12	-14.43	-17.55	-43.02	40°10'29.539"N	104°45'57.186"W	0.43	
1734.00	3.360	262.480	1732.99	-15.16	-18.63	-47.84	40°10'29.528"N	104°45'57.248"W	1.00	
1829.00	3.210	245.440	1827.83	-16.26	-20.10	-53.01	40°10'29.513"N	104°45'57.315"W	1.04	
1924.00	3.130	242.050	1922.69	-18.24	-22.43	-57.72	40°10'29.490"N	104°45'57.376"W	0.21	
2019.00	2.710	238.800	2017.57	-20.31	-24.80	-61.94	40°10'29.467"N	104°45'57.430"W	0.48	
2114.00	3.310	239.110	2112.43	-22.57	-27.38	-66.21	40°10'29.441"N	104°45'57.485"W	0.63	
2208.00	2.730	239.940	2206.30	-24.77	-29.89	-70.48	40°10'29.417"N	104°45'57.540"W	0.62	
2303.00	2.230	230.470	2301.21	-26.83	-32.20	-73.86	40°10'29.394"N	104°45'57.584"W	0.68	
2398.00	3.230	245.580	2396.11	-28.83	-34.48	-77.72	40°10'29.371"N	104°45'57.633"W	1.29	
2493.00	3.040	243.550	2490.96	-30.72	-36.71	-82.42	40°10'29.349"N	104°45'57.694"W	0.23	
2588.00	2.840	237.210	2585.84	-32.81	-39.11	-86.65	40°10'29.326"N	104°45'57.748"W	0.40	
2682.00	1.890	231.520	2679.76	-34.80	-41.33	-89.82	40°10'29.304"N	104°45'57.789"W	1.04	
2777.00	2.070	218.640	2774.70	-36.94	-43.65	-92.12	40°10'29.281"N	104°45'57.819"W	0.50	
2872.00	2.480	229.950	2869.63	-39.41	-46.31	-94.76	40°10'29.254"N	104°45'57.853"W	0.64	
2967.00	3.290	244.150	2964.51	-41.63	-48.82	-98.79	40°10'29.230"N	104°45'57.905"W	1.13	
3062.00	4.170	248.320	3059.31	-43.68	-51.29	-104.45	40°10'29.205"N	104°45'57.978"W	0.97	
3156.00	3.840	249.600	3153.08	-45.59	-53.65	-110.58	40°10'29.182"N	104°45'58.057"W	0.36	
3251.00	3.380	251.310	3247.89	-47.19	-55.65	-116.21	40°10'29.162"N	104°45'58.129"W	0.50	
3346.00	2.650	247.420	3342.76	-48.59	-57.39	-120.90	40°10'29.145"N	104°45'58.189"W	0.80	
3441.00	3.410	242.080	3437.62	-50.43	-59.56	-125.42	40°10'29.123"N	104°45'58.248"W	0.85	
3536.00	3.180	226.720	3532.47	-53.24	-62.69	-129.83	40°10'29.092"N	104°45'58.305"W	0.96	
3631.00	3.100	218.980	3627.32	-56.78	-66.49	-133.37	40°10'29.055"N	104°45'58.350"W	0.45	
3726.00	3.220	218.650	3722.18	-60.61	-70.57	-136.65	40°10'29.015"N	104°45'58.392"W	0.13	
3820.00	4.310	216.620	3815.98	-65.23	-75.47	-140.41	40°10'28.966"N	104°45'58.441"W	1.17	
3915.00	3.960	232.800	3910.73	-69.72	-80.32	-145.15	40°10'28.918"N	104°45'58.502"W	1.28	
4010.00	3.150	254.770	4005.55	-72.02	-82.99	-150.28	40°10'28.892"N	104°45'58.568"W	1.65	
4105.00	2.380	227.960	4100.45	-73.73	-85.00	-154.26	40°10'28.872"N	104°45'58.619"W	1.56	



Actual Wellpath Report

RATTLER 29C-34HZ AWP

Page 3 of 7



REFERENCE WELLPATH IDENTIFICATION

Operator	KERR-MCGEE OIL & GAS ONSHORE LP	Slot	SLOT#24 RATTLER 29C-34HZ (200'FSL & 1957'FWL,SEC.34)
Area	COLORADO	Well	RATTLER 29C-34HZ
Field	WELD COUNTY (KERR MCGEE)	Wellbore	RATTLER 29C-34HZ AWB
Facility	SEC.34-T3N-R66W		

WELLPATH DATA (154 stations)

MD [ft]	Inclination [°]	Azimuth [°]	TVD [ft]	Vert Sect [ft]	North [ft]	East [ft]	Latitude	Longitude	DLS [°/100ft]	Comments
4200.00	3.950	229.220	4195.30	-76.90	-88.45	-158.21	40°10'28.838"N	104°45'58.670"W	1.65	
4295.00	4.090	237.160	4290.06	-80.49	-92.43	-163.53	40°10'28.799"N	104°45'58.739"W	0.60	
4389.00	4.140	254.820	4383.83	-82.75	-95.13	-169.62	40°10'28.772"N	104°45'58.817"W	1.34	
4484.00	4.080	270.550	4478.58	-83.13	-96.00	-176.31	40°10'28.763"N	104°45'58.903"W	1.18	
4579.00	3.360	268.300	4573.38	-82.74	-96.05	-182.47	40°10'28.763"N	104°45'58.983"W	0.77	
4674.00	2.800	258.190	4668.25	-82.94	-96.61	-187.53	40°10'28.757"N	104°45'59.048"W	0.82	
4769.00	2.150	253.340	4763.16	-83.63	-97.59	-191.51	40°10'28.748"N	104°45'59.099"W	0.72	
4864.00	1.430	236.930	4858.11	-84.60	-98.75	-194.21	40°10'28.736"N	104°45'59.134"W	0.92	
4958.00	2.370	247.300	4952.06	-85.78	-100.14	-196.98	40°10'28.722"N	104°45'59.170"W	1.06	
5053.00	2.800	245.790	5046.96	-87.21	-101.85	-200.91	40°10'28.705"N	104°45'59.220"W	0.46	
5148.00	4.080	255.570	5141.79	-88.61	-103.64	-206.30	40°10'28.688"N	104°45'59.290"W	1.48	
5243.00	4.230	255.570	5236.54	-89.85	-105.36	-212.97	40°10'28.671"N	104°45'59.376"W	0.16	
5338.00	3.540	253.880	5331.32	-91.08	-107.05	-219.18	40°10'28.654"N	104°45'59.456"W	0.74	
5433.00	3.070	247.900	5426.16	-92.48	-108.82	-224.35	40°10'28.637"N	104°45'59.522"W	0.61	
5528.00	2.600	243.970	5521.05	-94.07	-110.72	-228.65	40°10'28.618"N	104°45'59.578"W	0.54	
5623.00	3.080	260.270	5615.93	-95.13	-112.10	-233.10	40°10'28.604"N	104°45'59.635"W	0.98	
5717.00	3.020	256.210	5709.80	-95.79	-113.12	-237.99	40°10'28.594"N	104°45'59.698"W	0.24	
5812.00	2.440	252.070	5804.69	-96.69	-114.33	-242.35	40°10'28.582"N	104°45'59.754"W	0.64	
5907.00	2.560	293.720	5899.61	-96.19	-114.10	-246.21	40°10'28.584"N	104°45'59.804"W	1.87	
6002.00	3.040	272.710	5994.50	-94.90	-113.13	-250.67	40°10'28.594"N	104°45'59.861"W	1.18	
6096.00	2.500	280.420	6088.39	-94.09	-112.64	-255.18	40°10'28.599"N	104°45'59.919"W	0.70	
6191.00	2.620	264.390	6183.29	-93.62	-112.48	-259.38	40°10'28.600"N	104°45'59.973"W	0.76	
6286.00	3.680	243.180	6278.15	-94.86	-114.07	-264.26	40°10'28.585"N	104°46'00.036"W	1.64	
6381.00	3.370	242.650	6372.97	-97.14	-116.73	-269.46	40°10'28.558"N	104°46'00.103"W	0.33	
6476.00	2.740	247.840	6467.84	-98.94	-118.87	-274.04	40°10'28.537"N	104°46'00.162"W	0.72	
6571.00	2.250	240.590	6562.75	-100.45	-120.64	-277.77	40°10'28.520"N	104°46'00.210"W	0.61	
6656.00	2.740	241.470	6647.66	-102.00	-122.43	-281.01	40°10'28.502"N	104°46'00.252"W	0.58	
6683.00	2.680	234.010	6674.63	-102.60	-123.11	-282.09	40°10'28.495"N	104°46'00.266"W	1.32	
6715.00	2.550	250.400	6706.60	-103.18	-123.79	-283.36	40°10'28.489"N	104°46'00.282"W	2.36	
6746.00	3.590	310.190	6737.56	-102.69	-123.39	-284.75	40°10'28.493"N	104°46'00.300"W	10.29	
6778.00	7.220	332.570	6769.42	-100.14	-120.96	-286.45	40°10'28.517"N	104°46'00.322"W	12.91	
6809.00	10.900	331.600	6800.03	-95.68	-116.65	-288.74	40°10'28.559"N	104°46'00.352"W	11.88	
6841.00	13.320	336.160	6831.31	-89.45	-110.61	-291.67	40°10'28.619"N	104°46'00.389"W	8.13	
6873.00	15.430	339.420	6862.31	-81.90	-103.26	-294.65	40°10'28.692"N	104°46'00.428"W	7.06	
6904.00	17.000	341.600	6892.08	-73.55	-95.10	-297.53	40°10'28.772"N	104°46'00.465"W	5.43	
6936.00	20.320	344.690	6922.39	-63.57	-85.29	-300.48	40°10'28.869"N	104°46'00.503"W	10.82	
6967.00	24.090	346.420	6951.09	-52.04	-73.95	-303.39	40°10'28.981"N	104°46'00.540"W	12.34	
6999.00	27.840	348.450	6979.85	-38.19	-60.27	-306.42	40°10'29.116"N	104°46'00.579"W	12.04	
7031.00	31.240	350.890	7007.69	-22.51	-44.76	-309.23	40°10'29.270"N	104°46'00.616"W	11.27	
7062.00	33.300	352.040	7033.90	-6.01	-28.39	-311.68	40°10'29.431"N	104°46'00.647"W	6.93	
7094.00	34.020	353.250	7060.54	11.70	-10.80	-313.95	40°10'29.605"N	104°46'00.676"W	3.07	
7126.00	34.640	358.520	7086.97	29.73	7.19	-315.24	40°10'29.783"N	104°46'00.693"W	9.49	
7157.00	35.300	2.390	7112.37	47.44	24.95	-315.09	40°10'29.958"N	104°46'00.691"W	7.46	
7189.00	38.380	0.440	7137.98	66.53	44.12	-314.63	40°10'30.148"N	104°46'00.685"W	10.29	
7221.00	42.100	359.330	7162.40	87.15	64.79	-314.68	40°10'30.352"N	104°46'00.686"W	11.84	



Actual Wellpath Report

RATTLER 29C-34HZ AWP

Page 4 of 7



REFERENCE WELLPATH IDENTIFICATION			
Operator	KERR-MCGEE OIL & GAS ONSHORE LP	Slot	SLOT#24 RATTLER 29C-34HZ (200'FSL & 1957'FWL,SEC.34)
Area	COLORADO	Well	RATTLER 29C-34HZ
Field	WELD COUNTY (KERR MCGEE)	Wellbore	RATTLER 29C-34HZ AWB
Facility	SEC.34-T3N-R66W		

WELLPATH DATA (154 stations) † = interpolated/extrapolated station										
MD [ft]	Inclination [°]	Azimuth [°]	TVD [ft]	Vert Sect [ft]	North [ft]	East [ft]	Latitude	Longitude	DLS [°/100ft]	Comments
7252.00	46.480	357.140	7184.59	108.77	86.42	-315.36	40°10'30.566"N	104°46'00.695"W	14.96	
7284.00	49.880	357.770	7205.92	132.61	110.24	-316.42	40°10'30.801"N	104°46'00.708"W	10.73	
7315.00	51.850	357.730	7225.49	156.64	134.26	-317.36	40°10'31.039"N	104°46'00.720"W	6.36	
7347.00	52.110	357.940	7245.20	181.83	159.46	-318.31	40°10'31.288"N	104°46'00.733"W	0.96	
7379.00	53.670	358.420	7264.51	207.33	184.96	-319.12	40°10'31.540"N	104°46'00.743"W	5.02	
7410.00	56.220	0.220	7282.31	232.66	210.33	-319.42	40°10'31.790"N	104°46'00.747"W	9.50	
7442.00	56.830	0.610	7299.96	259.27	237.02	-319.22	40°10'32.054"N	104°46'00.744"W	2.16	
7474.00	59.050	0.480	7316.95	286.29	264.14	-318.96	40°10'32.322"N	104°46'00.741"W	6.95	
7505.00	61.310	0.570	7332.36	313.10	291.03	-318.72	40°10'32.588"N	104°46'00.738"W	7.29	
7537.00	61.890	0.980	7347.58	341.15	319.18	-318.34	40°10'32.866"N	104°46'00.733"W	2.13	
7569.00	63.850	0.780	7362.17	369.52	347.65	-317.90	40°10'33.147"N	104°46'00.727"W	6.15	
7600.00	67.990	1.410	7374.82	397.70	375.94	-317.36	40°10'33.427"N	104°46'00.720"W	13.48	
7632.00	69.670	2.350	7386.37	427.37	405.77	-316.38	40°10'33.722"N	104°46'00.708"W	5.92	
7663.00	72.130	1.770	7396.52	456.49	435.04	-315.32	40°10'34.011"N	104°46'00.694"W	8.13	
7695.00	73.750	1.890	7405.90	486.92	465.61	-314.35	40°10'34.313"N	104°46'00.682"W	5.08	
7727.00	74.110	2.140	7414.76	517.50	496.34	-313.27	40°10'34.617"N	104°46'00.668"W	1.35	
7758.00	75.760	2.090	7422.82	547.25	526.26	-312.16	40°10'34.912"N	104°46'00.654"W	5.32	
7790.00	79.680	1.950	7429.62	578.34	557.50	-311.06	40°10'35.221"N	104°46'00.639"W	12.26	
7821.00	82.480	1.150	7434.43	608.81	588.11	-310.23	40°10'35.524"N	104°46'00.629"W	9.39	
7841.00	83.800	0.680	7436.82	628.59	607.96	-309.92	40°10'35.720"N	104°46'00.625"W	7.00	
7893.00†	86.123	0.256	7441.39	680.22	659.76	-309.49	40°10'36.232"N	104°46'00.619"W	4.54	7" Casing Point
7948.00	88.580	359.810	7443.93	735.01	714.70	-309.46	40°10'36.775"N	104°46'00.619"W	4.54	
8011.00	88.360	0.070	7445.61	797.83	777.67	-309.53	40°10'37.397"N	104°46'00.620"W	0.54	
8106.00	87.230	358.480	7449.26	892.59	872.59	-310.73	40°10'38.335"N	104°46'00.635"W	2.05	
8201.00	88.090	359.190	7453.14	987.39	967.49	-312.66	40°10'39.273"N	104°46'00.660"W	1.17	
8296.00	90.090	358.120	7454.65	1082.26	1062.45	-314.89	40°10'40.211"N	104°46'00.689"W	2.39	
8390.00	91.930	358.430	7453.00	1176.16	1156.38	-317.72	40°10'41.139"N	104°46'00.725"W	1.99	
8485.00	91.750	359.260	7449.95	1270.98	1251.31	-319.63	40°10'42.077"N	104°46'00.750"W	0.89	
8580.00	92.520	1.250	7446.41	1365.64	1346.24	-319.21	40°10'43.016"N	104°46'00.744"W	2.24	
8675.00	92.470	2.590	7442.27	1460.02	1441.10	-316.03	40°10'43.953"N	104°46'00.703"W	1.41	
8770.00	92.550	1.990	7438.11	1554.34	1535.93	-312.24	40°10'44.890"N	104°46'00.655"W	0.64	
8865.00	90.920	1.920	7435.23	1648.76	1630.83	-309.00	40°10'45.828"N	104°46'00.613"W	1.72	
8959.00	90.400	1.660	7434.15	1742.26	1724.77	-306.06	40°10'46.756"N	104°46'00.575"W	0.62	
9054.00	90.910	2.330	7433.06	1836.71	1819.71	-302.75	40°10'47.694"N	104°46'00.533"W	0.89	
9149.00	90.820	359.570	7431.63	1931.32	1914.68	-301.18	40°10'48.633"N	104°46'00.512"W	2.91	
9244.00	90.180	358.710	7430.80	2026.17	2009.66	-302.61	40°10'49.571"N	104°46'00.531"W	1.13	
9339.00	89.410	357.560	7431.14	2121.09	2104.61	-305.70	40°10'50.510"N	104°46'00.570"W	1.46	
9433.00	90.980	357.800	7430.82	2215.04	2198.53	-309.50	40°10'51.438"N	104°46'00.620"W	1.69	
9528.00	90.490	357.070	7429.60	2310.00	2293.42	-313.75	40°10'52.376"N	104°46'00.674"W	0.93	
9623.00	89.080	355.540	7429.96	2404.99	2388.22	-319.87	40°10'53.312"N	104°46'00.753"W	2.19	
9718.00	88.800	356.430	7431.72	2499.97	2482.97	-326.53	40°10'54.249"N	104°46'00.839"W	0.98	
9813.00	90.340	357.240	7432.43	2594.95	2577.82	-331.77	40°10'55.186"N	104°46'00.906"W	1.83	
9908.00	91.660	358.280	7430.77	2689.89	2672.73	-335.48	40°10'56.124"N	104°46'00.954"W	1.77	
10003.00	91.410	359.680	7428.23	2784.71	2767.68	-337.17	40°10'57.062"N	104°46'00.976"W	1.50	
10098.00	89.170	0.700	7427.75	2879.44	2862.67	-336.86	40°10'58.001"N	104°46'00.972"W	2.59	



Actual Wellpath Report

RATTLER 29C-34HZ AWP

Page 5 of 7



REFERENCE WELLPATH IDENTIFICATION			
Operator	KERR-MCGEE OIL & GAS ONSHORE LP	Slot	SLOT#24 RATTLER 29C-34HZ (200'FSL & 1957'FWL,SEC.34)
Area	COLORADO	Well	RATTLER 29C-34HZ
Field	WELD COUNTY (KERR MCGEE)	Wellbore	RATTLER 29C-34HZ AWB
Facility	SEC.34-T3N-R66W		

WELLPATH DATA (154 stations)

MD [ft]	Inclination [°]	Azimuth [°]	TVD [ft]	Vert Sect [ft]	North [ft]	East [ft]	Latitude	Longitude	DLS [°/100ft]	Comments
10192.00	90.000	0.820	7428.43	2973.10	2956.66	-335.61	40°10'58.930"N	104°46'00.956"W	0.89	
10287.00	89.850	359.980	7428.55	3067.80	3051.65	-334.95	40°10'59.868"N	104°46'00.948"W	0.90	
10382.00	90.250	1.530	7428.47	3162.46	3146.64	-333.70	40°11'00.807"N	104°46'00.931"W	1.69	
10477.00	90.600	0.800	7427.76	3257.05	3241.62	-331.76	40°11'01.746"N	104°46'00.907"W	0.85	
10572.00	90.800	0.300	7426.60	3351.73	3336.61	-330.85	40°11'02.684"N	104°46'00.895"W	0.57	
10667.00	90.200	0.400	7425.77	3446.44	3431.60	-330.27	40°11'03.623"N	104°46'00.887"W	0.64	
10762.00	90.400	0.900	7425.28	3541.11	3526.59	-329.19	40°11'04.562"N	104°46'00.873"W	0.57	
10856.00	90.800	1.000	7424.29	3634.74	3620.57	-327.64	40°11'05.491"N	104°46'00.853"W	0.44	
10951.00	91.700	0.600	7422.22	3729.37	3715.54	-326.31	40°11'06.429"N	104°46'00.836"W	1.04	
11046.00	89.400	0.600	7421.31	3824.04	3810.53	-325.32	40°11'07.368"N	104°46'00.824"W	2.42	
11141.00	89.400	0.100	7422.30	3918.74	3905.52	-324.74	40°11'08.306"N	104°46'00.816"W	0.53	
11236.00	90.200	359.500	7422.63	4013.52	4000.52	-325.07	40°11'09.245"N	104°46'00.820"W	1.05	
11331.00	89.700	359.900	7422.72	4108.31	4095.51	-325.56	40°11'10.184"N	104°46'00.827"W	0.67	
11425.00	89.900	359.100	7423.05	4202.13	4189.51	-326.38	40°11'11.113"N	104°46'00.837"W	0.88	
11520.00	89.400	359.000	7423.63	4296.98	4284.49	-327.96	40°11'12.051"N	104°46'00.858"W	0.54	
11615.00	90.900	360.000	7423.38	4391.79	4379.49	-328.79	40°11'12.990"N	104°46'00.868"W	1.90	
11710.00	90.200	359.900	7422.46	4486.54	4474.48	-328.87	40°11'13.929"N	104°46'00.869"W	0.74	
11753.00	90.340	359.890	7422.26	4529.44	4517.48	-328.95	40°11'14.354"N	104°46'00.870"W	0.33	Last BHI MWD Survey
11821.00	90.340	359.890	7421.86	4597.27	4585.48	-329.08	40°11'15.026"N	104°46'00.872"W	0.00	Projection to Bit

HOLE & CASING SECTIONS - Ref Wellbore: RATTLER 29C-34HZ AWB Ref Wellpath: RATTLER 29C-34HZ AWP

String/Diameter	Start MD [ft]	End MD [ft]	Interval [ft]	Start TVD [ft]	End TVD [ft]	Start N/S [ft]	Start E/W [ft]	End N/S [ft]	End E/W [ft]
12.25in Open Hole	13.00	917.00	904.00	13.00	916.79	0.00	0.00	-8.15	-13.90
9.625in Casing Surface	13.00	917.00	904.00	13.00	916.79	0.00	0.00	-8.15	-13.90
8.75in Open Hole	917.00	7900.00	6983.00	916.79	7441.84	-8.15	-13.90	666.74	-309.47
7in Casing Intermediate	13.00	7893.00	7880.00	13.00	7441.39	0.00	0.00	659.76	-309.49
6.125in Open Hole	7893.00	11821.00	3928.00	7441.39	7421.86	659.76	-309.49	4585.48	-329.08



Actual Wellpath Report

RATTLER 29C-34HZ AWP

Page 6 of 7



REFERENCE WELLPATH IDENTIFICATION

Operator	KERR-MCGEE OIL & GAS ONSHORE LP	Slot	SLOT#24 RATTLER 29C-34HZ (200'FSL & 1957'FWL,SEC.34)
Area	COLORADO	Well	RATTLER 29C-34HZ
Field	WELD COUNTY (KERR MCGEE)	Wellbore	RATTLER 29C-34HZ AWB
Facility	SEC.34-T3N-R66W		

TARGETS

Name	MD [ft]	TVD [ft]	North [ft]	East [ft]	Grid East [US ft]	Grid North [US ft]	Latitude	Longitude	Shape
RATTLER SECTION 34 LINES		19.00	-14.12	-1493.34	3203684.99	1307389.26	40°10'29.572"N	104°46'15.870"W	polygon
RATTLER SEC.34 HARDLINES (460' SETBACKS)		7219.00	-14.12	-1493.34	3203684.99	1307389.26	40°10'29.572"N	104°46'15.870"W	polygon
RATTLER 29C-34HZ BHL ON PLAT (460'FNL & 1650'FWL,SEC.34) REV-2		7436.00	4611.61	-328.76	3204811.18	1312024.27	40°11'15.284"N	104°46'00.868"W	point
RATTLER 29C-34HZ BHL ON PLAT (460'FNL & 1710'FWL,SEC.34) REV-1		7436.00	4611.61	-268.76	3204871.17	1312024.77	40°11'15.284"N	104°46'00.095"W	point

WELLPATH COMPOSITION - Ref Wellbore: RATTLER 29C-34HZ AWB Ref Wellpath: RATTLER 29C-34HZ AWP

Start MD [ft]	End MD [ft]	Positional Uncertainty Model	Log Name/Comment	Wellbore
13.00	863.00	Gyrodata standard - Continuous gyro	GYRODATA SURVEYS <113-863>	RATTLER 29C-34HZ AWB
863.00	7841.00	NaviTrak (Standard)	BHI MWD SURVEYS 8 3/4" HOLE <975-7841>	RATTLER 29C-34HZ AWB
7841.00	11753.00	OnTrak (Standard)	BHI MWD SURVEYS 6 1/8" HOLE <7948-11753>	RATTLER 29C-34HZ AWB
11753.00	11821.00	Blind Drilling (std)	Projection to bit	RATTLER 29C-34HZ AWB



Actual Wellpath Report

RATTLER 29C-34HZ AWP

Page 7 of 7



REFERENCE WELLPATH IDENTIFICATION			
Operator	KERR-MCGEE OIL & GAS ONSHORE LP	Slot	SLOT#24 RATTLER 29C-34HZ (200'FSL & 1957'FWL,SEC.34)
Area	COLORADO	Well	RATTLER 29C-34HZ
Field	WELD COUNTY (KERR MCGEE)	Wellbore	RATTLER 29C-34HZ AWB
Facility	SEC.34-T3N-R66W		

WELLPATH COMMENTS				
MD [ft]	Inclination [°]	Azimuth [°]	TVD [ft]	Comment
13.00	0.000	257.650	13.00	Tie-On
113.00	0.180	257.650	113.00	Begin GYRO Surveys
863.00	1.700	251.800	862.82	Tie-Into GYRO Surveys
975.00	2.680	261.610	974.74	Begin BHI MWD Surveys
7893.00	86.123	0.256	7441.39	7" Casing Point
11753.00	90.340	359.890	7422.26	Last BHI MWD Survey
11821.00	90.340	359.890	7421.86	Projection to Bit