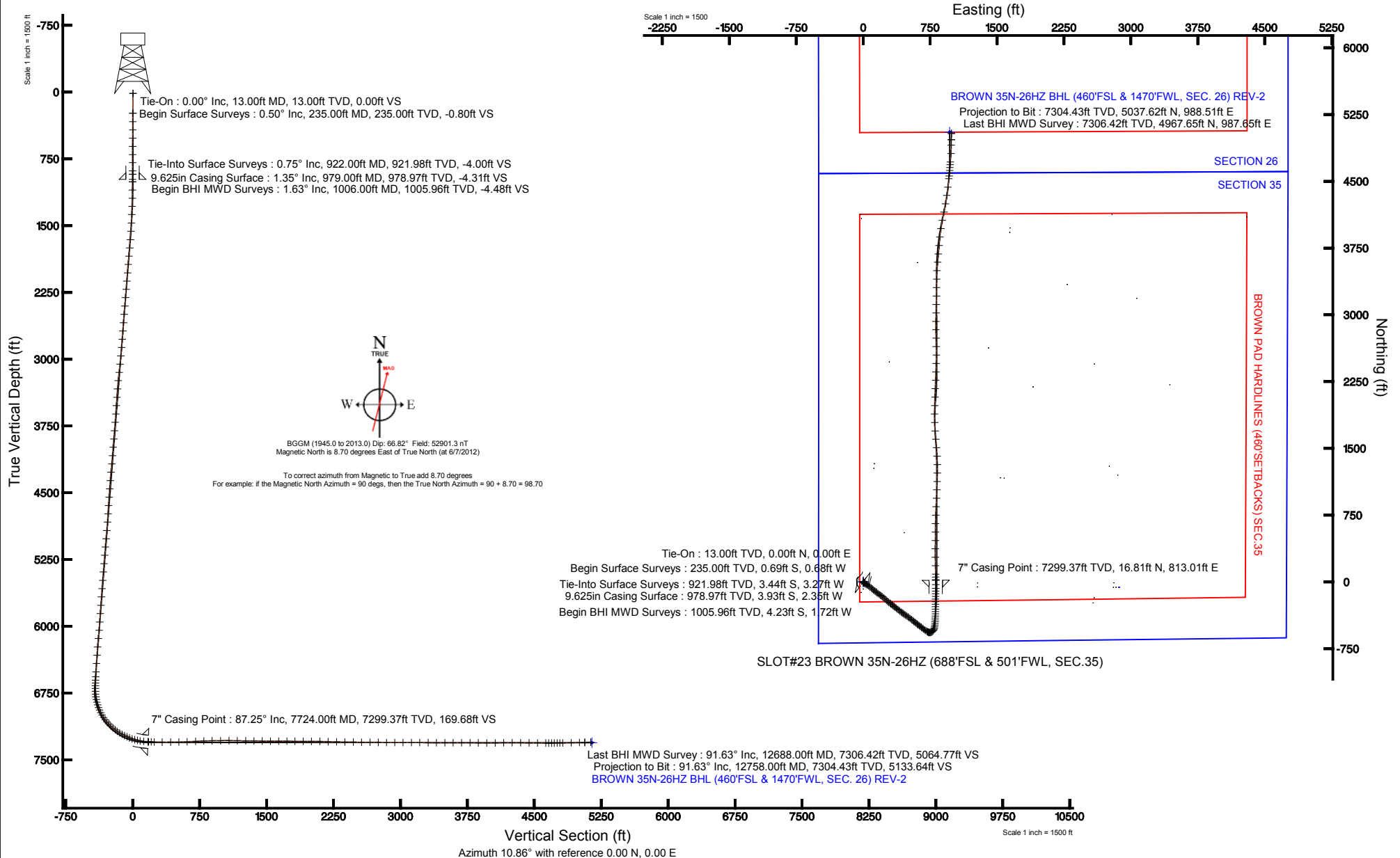


KERR-MCGEE OIL & GAS ONSHORE LP

Location: COLORADO Slot: SLOT#23 BROWN 35N-26HZ (688'FSL & 501'FWL, SEC.35)
 Field: WELD COUNTY (KERR MCGEE) Well: BROWN 35N-26HZ
 Facility: SEC.35-T3N-R66W Wellbore: BROWN 35N-26HZ PWB

Plot reference wellpath is BROWN 35N-26HZ (REV-A.0) PWP

True vertical depths are referenced to ENSIGN 145 (RKB)	Grid System: NAD83 / Lambert Colorado SP, Northern Zone (501), US feet
Measured depths are referenced to ENSIGN 145 (RKB)	North Reference: True north
ENSIGN 145 (RKB) to Mean Sea Level: 5033 feet	Scale: True distance
Mean Sea Level to Mud line (At Slot: SLOT#23 BROWN 35N-26HZ (688'FSL & 501'FWL, SEC.35)): 0 feet	Depths are in feet
Coordinates are in feet referenced to Slot	Created by: wiljef02 on 6/25/2012



-750

0

750

1500

2250

3000

3750

4500

5250

6000

6750

7500

-750

Scale 1 inch = 1500

Easting (ft) -2250 -1500 -750 0 750 1500 2250 3000 3750 4500 5250

6000

5250

4500

3750

3000

2250

1500

750

0

-750

Northing (ft)

BGGM (1945.0 to 2013.0) Dip: 66.82° Field: 52901.3 nT
 Magnetic North is 8.70 degrees East of True North (at 6/7/2012)

To correct azimuth from Magnetic to True add 8.70 degrees
 For example: if the Magnetic North Azimuth = 90 degs, then the True North Azimuth = 90 + 8.70 = 98.70

Tie-On : 13.00ft TVD, 0.00ft N, 0.00ft E
 Begin Surface Surveys : 235.00ft TVD, 0.69ft S, 0.68ft W
 Tie-Into Surface Surveys : 921.98ft TVD, 3.44ft S, 3.27ft W
 9.625in Casing Surface : 978.97ft TVD, 3.93ft S, 2.35ft W
 Begin BHI MWD Surveys : 1005.96ft TVD, 4.23ft S, 1.72ft W

7" Casing Point : 7299.37ft TVD, 16.81ft N, 813.01ft E

Last BHI MWD Survey : 91.63° Inc, 12688.00ft MD, 7306.42ft TVD, 5064.77ft VS
 Projection to Bit : 91.63° Inc, 12758.00ft MD, 7304.43ft TVD, 5133.64ft VS
 BROWN 35N-26HZ BHL (460'FSL & 1470'FWL, SEC. 26) REV-2

SLOT#23 BROWN 35N-26HZ (688'FSL & 501'FWL, SEC.35)

Vertical Section (ft)

Azimuth 10.86° with reference 0.00 N, 0.00 E

Scale 1 inch = 1500 ft



Actual Wellpath Report

BROWN 35N-26HZ AWP

Page 1 of 7



REFERENCE WELLPATH IDENTIFICATION

Operator	KERR-MCGEE OIL & GAS ONSHORE LP	Slot	SLOT#23 BROWN 35N-26HZ (688'FSL & 501'FWL, SEC.35)
Area	COLORADO	Well	BROWN 35N-26HZ
Field	WELD COUNTY (KERR MCGEE)	Wellbore	BROWN 35N-26HZ AWB
Facility	SEC.35-T3N-R66W		

REPORT SETUP INFORMATION

Projection System	NAD83 / Lambert Colorado SP, Northern Zone (501), US feet	Software System	WellArchitect® 3.0.2
North Reference	True	User	Wilsjef02
Scale	0.999958	Report Generated	6/25/2012 at 09:42:13
Convergence at slot	0.48° East	Database/Source file	WellArchitectDB/BROWN_35N-26HZ_AWB.xml

WELLPATH LOCATION

	Local coordinates		Grid coordinates		Geographic coordinates	
	North[ft]	East[ft]	Easting[US ft]	Northing[US ft]	Latitude	Longitude
Slot Location	-1172.28	-1530.25	3209017.16	1307973.13	40°10'34.903"N	104°45'07.114"W
Facility Reference Pt			3210537.33	1309158.32	40°10'46.488"N	104°44'47.400"W
Field Reference Pt			3197771.84	1268891.29	40°04'09.600"N	104°47'36.000"W

WELLPATH DATUM

Calculation method	Minimum curvature	ENSIGN 145 (RKB) to Facility Vertical Datum	5033.00ft
Horizontal Reference Pt	Slot	ENSIGN 145 (RKB) to Mean Sea Level	5033.00ft
Vertical Reference Pt	ENSIGN 145 (RKB)	ENSIGN 145 (RKB) to Mud Line at Slot (SLOT#23 BROWN 35N-26HZ (688'FSL & 501'FWL, SEC.35))	5033.00ft
MD Reference Pt	ENSIGN 145 (RKB)	Section Origin	N 0.00, E 0.00 ft
Field Vertical Reference	Mean Sea Level	Section Azimuth	10.86°



Actual Wellpath Report

BROWN 35N-26HZ AWP

Page 2 of 7



REFERENCE WELLPATH IDENTIFICATION			
Operator	KERR-MCGEE OIL & GAS ONSHORE LP	Slot	SLOT#23 BROWN 35N-26HZ (688'FSL & 501'FWL, SEC.35)
Area	COLORADO	Well	BROWN 35N-26HZ
Field	WELD COUNTY (KERR MCGEE)	Wellbore	BROWN 35N-26HZ AWP
Facility	SEC.35-T3N-R66W		

WELLPATH DATA (165 stations) † = interpolated/extrapolated station										
MD [ft]	Inclination [°]	Azimuth [°]	TVD [ft]	Vert Sect [ft]	North [ft]	East [ft]	Latitude	Longitude	DLS [°/100ft]	Comments
0.00†	0.000	224.780	0.00	0.00	0.00	0.00	40°10'34.903"N	104°45'07.114"W	0.00	
13.00	0.000	224.780	13.00	0.00	0.00	0.00	40°10'34.903"N	104°45'07.114"W	0.00	Tie-On
235.00	0.500	224.780	235.00	-0.80	-0.69	-0.68	40°10'34.896"N	104°45'07.123"W	0.23	Begin Surface Surveys
331.00	0.610	224.730	330.99	-1.58	-1.35	-1.34	40°10'34.890"N	104°45'07.131"W	0.11	
423.00	0.690	222.650	422.99	-2.45	-2.10	-2.06	40°10'34.882"N	104°45'07.140"W	0.09	
515.00	0.210	241.770	514.98	-3.03	-2.59	-2.58	40°10'34.877"N	104°45'07.147"W	0.54	
608.00	0.130	219.960	607.98	-3.23	-2.75	-2.80	40°10'34.876"N	104°45'07.150"W	0.11	
700.00	0.320	245.760	699.98	-3.47	-2.94	-3.10	40°10'34.874"N	104°45'07.154"W	0.23	
792.00	0.460	278.520	791.98	-3.63	-2.99	-3.70	40°10'34.873"N	104°45'07.162"W	0.28	
884.00	0.610	122.840	883.98	-3.83	-3.20	-3.65	40°10'34.871"N	104°45'07.161"W	1.14	
922.00	0.750	121.920	921.98	-4.00	-3.44	-3.27	40°10'34.869"N	104°45'07.156"W	0.37	Tie-Into Surface Surveys
1006.00	1.630	114.910	1005.96	-4.48	-4.23	-1.72	40°10'34.861"N	104°45'07.136"W	1.06	Begin BHI MWD Surveys
1098.00	2.680	127.200	1097.89	-5.75	-6.09	1.18	40°10'34.843"N	104°45'07.099"W	1.24	
1191.00	2.660	123.620	1190.79	-7.55	-8.60	4.71	40°10'34.818"N	104°45'07.053"W	0.18	
1283.00	3.910	130.000	1282.64	-9.91	-11.79	8.89	40°10'34.786"N	104°45'07.000"W	1.41	
1375.00	5.020	128.410	1374.36	-13.30	-16.31	14.44	40°10'34.742"N	104°45'06.928"W	1.21	
1470.00	6.550	123.350	1468.87	-17.29	-21.87	22.23	40°10'34.687"N	104°45'06.828"W	1.70	
1565.00	8.550	122.930	1563.04	-22.02	-28.69	32.68	40°10'34.619"N	104°45'06.693"W	2.11	
1660.00	10.740	124.280	1656.69	-28.19	-37.52	45.93	40°10'34.532"N	104°45'06.522"W	2.32	
1754.00	11.800	125.310	1748.88	-35.65	-48.01	61.01	40°10'34.429"N	104°45'06.328"W	1.15	
1849.00	10.520	128.290	1842.08	-43.67	-58.99	75.74	40°10'34.320"N	104°45'06.138"W	1.48	
1944.00	10.210	130.040	1935.53	-51.77	-69.78	88.99	40°10'34.213"N	104°45'05.968"W	0.47	
2039.00	10.320	129.470	2029.01	-59.95	-80.61	102.01	40°10'34.106"N	104°45'05.800"W	0.16	
2134.00	10.030	129.160	2122.52	-67.94	-91.24	114.99	40°10'34.001"N	104°45'05.633"W	0.31	
2228.00	9.720	127.600	2215.13	-75.40	-101.25	127.63	40°10'33.902"N	104°45'05.470"W	0.44	
2323.00	10.040	127.230	2308.72	-82.68	-111.16	140.57	40°10'33.805"N	104°45'05.303"W	0.34	
2418.00	9.620	129.760	2402.32	-90.20	-121.24	153.27	40°10'33.705"N	104°45'05.139"W	0.63	
2513.00	10.170	128.910	2495.91	-97.98	-131.59	165.90	40°10'33.603"N	104°45'04.977"W	0.60	
2608.00	9.900	128.120	2589.46	-105.66	-141.90	178.85	40°10'33.501"N	104°45'04.810"W	0.32	
2703.00	9.330	126.580	2683.12	-112.75	-151.53	191.46	40°10'33.406"N	104°45'04.647"W	0.66	
2797.00	9.640	125.360	2775.84	-119.32	-160.63	204.00	40°10'33.316"N	104°45'04.486"W	0.39	
2892.00	10.450	128.240	2869.38	-126.58	-170.56	217.25	40°10'33.218"N	104°45'04.315"W	1.00	
2987.00	11.490	130.660	2962.64	-135.24	-182.06	231.19	40°10'33.104"N	104°45'04.136"W	1.20	
3082.00	11.380	132.220	3055.76	-144.82	-194.52	245.31	40°10'32.981"N	104°45'03.954"W	0.35	
3177.00	11.390	133.680	3148.89	-154.78	-207.30	259.04	40°10'32.854"N	104°45'03.777"W	0.30	
3272.00	11.180	132.670	3242.05	-164.72	-220.02	272.59	40°10'32.729"N	104°45'03.602"W	0.30	
3366.00	9.820	125.110	3334.48	-172.82	-230.81	285.85	40°10'32.622"N	104°45'03.431"W	2.06	
3461.00	9.290	125.580	3428.16	-179.35	-239.93	298.72	40°10'32.532"N	104°45'03.266"W	0.56	
3556.00	8.320	128.240	3522.04	-185.72	-248.64	310.35	40°10'32.446"N	104°45'03.116"W	1.11	
3651.00	8.130	126.130	3616.06	-191.75	-256.86	321.18	40°10'32.365"N	104°45'02.976"W	0.38	
3746.00	9.150	130.930	3709.99	-198.40	-265.77	332.31	40°10'32.277"N	104°45'02.833"W	1.31	
3841.00	9.760	132.470	3803.69	-206.41	-276.15	343.96	40°10'32.174"N	104°45'02.683"W	0.70	
3935.00	9.690	129.100	3896.34	-214.33	-286.52	355.97	40°10'32.072"N	104°45'02.528"W	0.61	
4030.00	10.050	128.150	3989.94	-221.91	-296.69	368.69	40°10'31.971"N	104°45'02.364"W	0.42	
4125.00	10.220	125.190	4083.46	-229.18	-306.66	382.10	40°10'31.873"N	104°45'02.192"W	0.58	



Actual Wellpath Report

BROWN 35N-26HZ AWP

Page 3 of 7



REFERENCE WELLPATH IDENTIFICATION				
Operator	KERR-MCGEE OIL & GAS ONSHORE LP		Slot	SLOT#23 BROWN 35N-26HZ (688'FSL & 501'FWL, SEC.35)
Area	COLORADO		Well	BROWN 35N-26HZ
Field	WELD COUNTY (KERR MCGEE)		Wellbore	BROWN 35N-26HZ AWB
Facility	SEC.35-T3N-R66W			

WELLPATH DATA (165 stations)										
MD [ft]	Inclination [°]	Azimuth [°]	TVD [ft]	Vert Sect [ft]	North [ft]	East [ft]	Latitude	Longitude	DLS [°/100ft]	Comments
4220.00	10.960	128.980	4176.84	-236.91	-317.20	396.01	40°10'31.768"N	104°45'02.012"W	1.07	
4315.00	10.910	129.160	4270.11	-245.43	-328.56	410.00	40°10'31.656"N	104°45'01.832"W	0.06	
4410.00	10.040	126.900	4363.53	-253.33	-339.21	423.59	40°10'31.551"N	104°45'01.657"W	1.01	
4505.00	8.880	129.490	4457.24	-260.48	-348.84	435.88	40°10'31.456"N	104°45'01.499"W	1.30	
4599.00	8.700	127.980	4550.13	-267.20	-357.83	447.08	40°10'31.367"N	104°45'01.354"W	0.31	
4694.00	8.980	122.880	4644.01	-273.25	-366.28	458.97	40°10'31.283"N	104°45'01.201"W	0.88	
4789.00	9.770	121.450	4737.74	-278.87	-374.51	472.07	40°10'31.202"N	104°45'01.032"W	0.87	
4884.00	10.870	123.360	4831.20	-285.13	-383.64	486.43	40°10'31.112"N	104°45'00.848"W	1.21	
4979.00	10.960	126.430	4924.48	-292.46	-393.93	501.18	40°10'31.010"N	104°45'00.658"W	0.62	
5073.00	10.610	128.650	5016.82	-300.35	-404.64	515.13	40°10'30.904"N	104°45'00.478"W	0.58	
5168.00	10.190	127.270	5110.26	-308.16	-415.19	528.64	40°10'30.800"N	104°45'00.304"W	0.51	
5263.00	10.030	128.300	5203.78	-315.71	-425.41	541.82	40°10'30.699"N	104°45'00.134"W	0.25	
5358.00	9.970	129.690	5297.34	-323.49	-435.79	554.64	40°10'30.596"N	104°44'59.969"W	0.26	
5453.00	9.370	130.210	5390.99	-331.25	-446.03	566.88	40°10'30.495"N	104°44'59.811"W	0.64	
5548.00	9.690	127.550	5484.68	-338.63	-455.90	579.12	40°10'30.398"N	104°44'59.653"W	0.57	
5642.00	9.530	127.640	5577.36	-345.69	-465.47	591.56	40°10'30.303"N	104°44'59.493"W	0.17	
5737.00	8.740	128.500	5671.16	-352.58	-474.77	603.43	40°10'30.211"N	104°44'59.340"W	0.84	
5832.00	9.000	127.040	5765.02	-359.21	-483.74	615.01	40°10'30.123"N	104°44'59.191"W	0.36	
5927.00	9.220	126.090	5858.82	-365.73	-492.70	627.09	40°10'30.034"N	104°44'59.035"W	0.28	
6022.00	9.530	126.470	5952.55	-372.37	-501.86	639.57	40°10'29.944"N	104°44'58.875"W	0.33	
6117.00	9.630	129.910	6046.23	-379.63	-511.63	651.99	40°10'29.847"N	104°44'58.715"W	0.61	
6212.00	10.340	130.620	6139.79	-387.72	-522.28	664.55	40°10'29.742"N	104°44'58.553"W	0.76	
6307.00	9.310	129.770	6233.39	-395.67	-532.74	676.93	40°10'29.638"N	104°44'58.393"W	1.09	
6401.00	9.390	125.940	6326.15	-402.60	-542.11	688.99	40°10'29.546"N	104°44'58.238"W	0.67	
6496.00	9.030	120.530	6419.92	-408.39	-550.44	701.68	40°10'29.463"N	104°44'58.075"W	0.99	
6591.00	9.210	121.180	6513.72	-413.54	-558.17	714.61	40°10'29.387"N	104°44'57.908"W	0.22	
6647.00	8.610	118.580	6569.05	-416.37	-562.49	722.12	40°10'29.344"N	104°44'57.811"W	1.29	
6686.00	8.230	121.180	6607.63	-418.23	-565.33	727.07	40°10'29.316"N	104°44'57.747"W	1.38	
6717.00	7.880	115.880	6638.32	-419.55	-567.41	730.88	40°10'29.296"N	104°44'57.698"W	2.65	
6749.00	7.310	106.020	6670.04	-420.30	-568.93	734.82	40°10'29.281"N	104°44'57.648"W	4.44	
6780.00	8.720	98.750	6700.74	-420.39	-569.83	739.03	40°10'29.272"N	104°44'57.593"W	5.59	
6812.00	11.600	92.350	6732.23	-419.83	-570.33	744.65	40°10'29.267"N	104°44'57.521"W	9.65	
6844.00	13.170	83.190	6763.49	-418.25	-570.03	751.48	40°10'29.270"N	104°44'57.433"W	7.84	
6875.00	15.380	70.540	6793.54	-415.10	-568.24	758.87	40°10'29.287"N	104°44'57.338"W	12.29	
6907.00	17.310	63.500	6824.25	-410.06	-564.71	767.13	40°10'29.322"N	104°44'57.231"W	8.63	
6938.00	18.340	51.570	6853.77	-403.57	-559.61	775.08	40°10'29.373"N	104°44'57.129"W	12.22	
6970.00	19.430	40.530	6884.06	-395.12	-552.44	782.49	40°10'29.444"N	104°44'57.034"W	11.66	
7002.00	20.900	28.920	6914.11	-385.07	-543.39	788.71	40°10'29.533"N	104°44'56.953"W	13.30	
7033.00	23.360	20.220	6942.83	-373.74	-532.78	793.51	40°10'29.638"N	104°44'56.892"W	13.20	
7065.00	26.110	12.320	6971.90	-360.44	-519.94	797.21	40°10'29.765"N	104°44'56.844"W	13.42	
7096.00	30.020	8.270	6999.25	-345.86	-505.60	799.78	40°10'29.907"N	104°44'56.811"W	14.02	
7128.00	33.690	6.140	7026.43	-329.02	-488.84	801.88	40°10'30.072"N	104°44'56.784"W	11.99	
7160.00	37.740	4.850	7052.40	-310.42	-470.25	803.66	40°10'30.256"N	104°44'56.761"W	12.87	
7191.00	40.400	4.190	7076.47	-291.01	-450.78	805.19	40°10'30.448"N	104°44'56.741"W	8.68	
7223.00	44.070	2.910	7100.16	-269.68	-429.31	806.52	40°10'30.660"N	104°44'56.724"W	11.78	



Actual Wellpath Report

BROWN 35N-26HZ AWP

Page 4 of 7



REFERENCE WELLPATH IDENTIFICATION

Operator	KERR-MCGEE OIL & GAS ONSHORE LP	Slot	SLOT#23 BROWN 35N-26HZ (688'FSL & 501'FWL, SEC.35)
Area	COLORADO	Well	BROWN 35N-26HZ
Field	WELD COUNTY (KERR MCGEE)	Wellbore	BROWN 35N-26HZ AWB
Facility	SEC.35-T3N-R66W		

WELLPATH DATA (165 stations) † = interpolated/extrapolated station

MD [ft]	Inclination [°]	Azimuth [°]	TVD [ft]	Vert Sect [ft]	North [ft]	East [ft]	Latitude	Longitude	DLS [°/100ft]	Comments
7254.00	46.240	2.560	7122.02	-247.92	-407.36	807.56	40°10'30.877"N	104°44'56.710"W	7.05	
7286.00	48.360	1.720	7143.72	-224.68	-383.86	808.44	40°10'31.110"N	104°44'56.699"W	6.90	
7318.00	52.670	1.820	7164.06	-200.29	-359.18	809.20	40°10'31.353"N	104°44'56.689"W	13.47	
7349.00	55.900	0.530	7182.16	-175.49	-334.02	809.71	40°10'31.602"N	104°44'56.683"W	10.95	
7381.00	58.200	359.920	7199.56	-149.10	-307.17	809.82	40°10'31.867"N	104°44'56.681"W	7.36	
7412.00	60.800	359.570	7215.29	-122.89	-280.46	809.70	40°10'32.131"N	104°44'56.683"W	8.44	
7444.00	63.610	359.210	7230.21	-95.15	-252.16	809.39	40°10'32.411"N	104°44'56.687"W	8.84	
7475.00	65.550	0.730	7243.52	-67.66	-224.16	809.38	40°10'32.688"N	104°44'56.687"W	7.67	
7507.00	68.530	1.650	7256.00	-38.62	-194.71	810.00	40°10'32.979"N	104°44'56.679"W	9.68	
7539.00	71.630	1.620	7266.90	-8.92	-164.64	810.86	40°10'33.276"N	104°44'56.668"W	9.69	
7570.00	73.810	1.250	7276.11	20.27	-135.05	811.60	40°10'33.568"N	104°44'56.658"W	7.12	
7602.00	77.550	1.230	7284.02	50.84	-104.06	812.27	40°10'33.875"N	104°44'56.650"W	11.69	
7633.00	80.150	0.950	7290.02	80.81	-73.65	812.85	40°10'34.175"N	104°44'56.642"W	8.43	
7675.00	84.220	0.220	7295.73	121.74	-32.05	813.27	40°10'34.586"N	104°44'56.637"W	9.84	
7724.00†	87.251	359.167	7299.37	169.68	16.81	813.01	40°10'35.069"N	104°44'56.640"W	6.55	7" Casing Point
7729.00	87.560	359.060	7299.60	174.57	21.80	812.93	40°10'35.118"N	104°44'56.641"W	6.55	
7761.00	87.810	359.060	7300.89	205.87	53.77	812.40	40°10'35.434"N	104°44'56.648"W	0.78	
7793.00	88.180	358.370	7302.01	237.13	85.74	811.69	40°10'35.750"N	104°44'56.657"W	2.45	
7887.00	89.660	359.080	7303.78	329.01	179.70	809.60	40°10'36.679"N	104°44'56.684"W	1.75	
7982.00	90.520	358.760	7303.63	421.95	274.68	807.81	40°10'37.617"N	104°44'56.707"W	0.97	
8077.00	91.200	0.780	7302.21	515.16	369.66	807.42	40°10'38.556"N	104°44'56.712"W	2.24	
8172.00	92.430	0.600	7299.20	608.62	464.61	808.57	40°10'39.494"N	104°44'56.697"W	1.31	
8267.00	92.800	0.190	7294.86	701.95	559.51	809.22	40°10'40.432"N	104°44'56.689"W	0.58	
8361.00	91.970	0.860	7290.95	794.34	653.42	810.08	40°10'41.360"N	104°44'56.678"W	1.13	
8456.00	90.800	2.310	7288.65	888.07	748.35	812.71	40°10'42.298"N	104°44'56.644"W	1.96	
8551.00	91.530	2.770	7286.72	982.05	843.24	816.92	40°10'43.236"N	104°44'56.589"W	0.91	
8646.00	88.980	2.510	7286.30	1076.06	938.13	821.29	40°10'44.173"N	104°44'56.533"W	2.70	
8741.00	88.730	2.170	7288.20	1169.99	1033.03	825.17	40°10'45.111"N	104°44'56.483"W	0.44	
8836.00	90.090	1.770	7289.18	1263.84	1127.97	828.44	40°10'46.049"N	104°44'56.441"W	1.49	
8930.00	89.100	0.830	7289.84	1356.54	1221.94	830.57	40°10'46.978"N	104°44'56.413"W	1.45	
9025.00	88.950	359.300	7291.46	1449.84	1316.92	830.68	40°10'47.917"N	104°44'56.412"W	1.62	
9120.00	90.240	357.320	7292.13	1542.56	1411.87	827.88	40°10'48.855"N	104°44'56.448"W	2.49	
9215.00	89.320	355.220	7292.49	1634.49	1506.66	821.70	40°10'49.792"N	104°44'56.528"W	2.41	
9310.00	89.930	355.040	7293.12	1725.93	1601.32	813.63	40°10'50.727"N	104°44'56.631"W	0.67	
9405.00	88.920	355.800	7294.07	1817.49	1696.01	806.05	40°10'51.663"N	104°44'56.729"W	1.33	
9500.00	90.270	358.250	7294.74	1909.73	1790.87	801.12	40°10'52.600"N	104°44'56.793"W	2.94	
9594.00	90.360	0.260	7294.22	2001.80	1884.85	799.89	40°10'53.529"N	104°44'56.808"W	2.14	
9689.00	87.810	1.200	7295.74	2095.30	1979.82	801.10	40°10'54.468"N	104°44'56.793"W	2.86	
9784.00	88.520	2.430	7298.78	2189.07	2074.72	804.11	40°10'55.405"N	104°44'56.754"W	1.49	
9879.00	89.160	1.800	7300.71	2282.94	2169.64	807.62	40°10'56.343"N	104°44'56.709"W	0.95	
9974.00	89.100	2.600	7302.15	2376.85	2264.56	811.26	40°10'57.281"N	104°44'56.662"W	0.84	
10068.00	89.300	2.000	7303.46	2469.79	2358.47	815.04	40°10'58.209"N	104°44'56.613"W	0.67	
10163.00	89.500	1.100	7304.46	2563.53	2453.43	817.61	40°10'59.148"N	104°44'56.580"W	0.97	
10258.00	89.500	0.300	7305.29	2657.04	2548.42	818.77	40°11'00.086"N	104°44'56.565"W	0.84	
10353.00	89.500	359.100	7306.11	2750.24	2643.41	818.27	40°11'01.025"N	104°44'56.571"W	1.26	



Actual Wellpath Report

BROWN 35N-26HZ AWP

Page 5 of 7



REFERENCE WELLPATH IDENTIFICATION				
Operator	KERR-MCGEE OIL & GAS ONSHORE LP		Slot	SLOT#23 BROWN 35N-26HZ (688'FSL & 501'FWL, SEC.35)
Area	COLORADO		Well	BROWN 35N-26HZ
Field	WELD COUNTY (KERR MCGEE)		Wellbore	BROWN 35N-26HZ AWP
Facility	SEC.35-T3N-R66W			

WELLPATH DATA (165 stations)										
MD [ft]	Inclination [°]	Azimuth [°]	TVD [ft]	Vert Sect [ft]	North [ft]	East [ft]	Latitude	Longitude	DLS [°/100ft]	Comments
10448.00	89.700	358.500	7306.78	2843.14	2738.39	816.28	40°11'01.964"N	104°44'56.597"W	0.67	
10543.00	89.160	358.960	7307.72	2936.01	2833.36	814.17	40°11'02.902"N	104°44'56.624"W	0.75	
10637.00	90.210	1.390	7308.24	3028.37	2927.35	814.46	40°11'03.831"N	104°44'56.620"W	2.82	
10732.00	90.360	0.570	7307.77	3121.96	3022.34	816.09	40°11'04.770"N	104°44'56.599"W	0.88	
10827.00	89.530	1.940	7307.86	3215.63	3117.31	818.17	40°11'05.708"N	104°44'56.572"W	1.69	
10922.00	89.500	1.150	7308.66	3309.37	3212.27	820.73	40°11'06.647"N	104°44'56.539"W	0.83	
11017.00	89.810	0.730	7309.23	3402.95	3307.26	822.29	40°11'07.585"N	104°44'56.519"W	0.55	
11112.00	89.600	1.120	7309.72	3496.52	3402.24	823.82	40°11'08.524"N	104°44'56.499"W	0.47	
11207.00	89.690	3.170	7310.31	3590.42	3497.17	827.37	40°11'09.462"N	104°44'56.454"W	2.16	
11302.00	89.960	5.050	7310.60	3684.76	3591.92	834.18	40°11'10.398"N	104°44'56.366"W	2.00	
11396.00	89.810	5.100	7310.79	3778.28	3685.55	842.50	40°11'11.324"N	104°44'56.259"W	0.17	
11491.00	89.410	4.690	7311.44	3872.76	3780.20	850.60	40°11'12.259"N	104°44'56.154"W	0.60	
11586.00	89.720	5.770	7312.16	3967.30	3874.80	859.26	40°11'13.194"N	104°44'56.043"W	1.18	
11681.00	90.670	8.680	7311.84	4062.10	3969.04	871.21	40°11'14.125"N	104°44'55.889"W	3.22	
11775.00	90.580	10.910	7310.81	4156.07	4061.65	887.20	40°11'15.040"N	104°44'55.682"W	2.37	
11870.00	89.960	10.960	7310.36	4251.07	4154.93	905.22	40°11'15.962"N	104°44'55.450"W	0.65	
11965.00	89.350	9.840	7310.93	4346.06	4248.36	922.37	40°11'16.885"N	104°44'55.229"W	1.34	
12060.00	89.810	8.300	7311.63	4441.01	4342.17	937.34	40°11'17.812"N	104°44'55.036"W	1.69	
12155.00	88.820	6.690	7312.77	4535.83	4436.35	949.73	40°11'18.743"N	104°44'54.877"W	1.99	
12249.00	89.720	5.320	7313.96	4629.48	4529.82	959.57	40°11'19.667"N	104°44'54.750"W	1.74	
12281.00	89.960	6.020	7314.05	4661.35	4561.66	962.73	40°11'19.981"N	104°44'54.709"W	2.31	
12313.00	90.300	5.460	7313.98	4693.23	4593.50	965.93	40°11'20.296"N	104°44'54.668"W	2.05	
12344.00	90.950	4.970	7313.64	4724.07	4624.37	968.75	40°11'20.601"N	104°44'54.631"W	2.63	
12376.00	91.070	4.830	7313.08	4755.90	4656.25	971.48	40°11'20.916"N	104°44'54.596"W	0.58	
12407.00	91.380	4.620	7312.42	4786.71	4687.14	974.03	40°11'21.221"N	104°44'54.563"W	1.21	
12439.00	90.920	4.470	7311.77	4818.51	4719.03	976.57	40°11'21.536"N	104°44'54.531"W	1.51	
12534.00	91.140	3.590	7310.07	4912.82	4813.78	983.24	40°11'22.473"N	104°44'54.445"W	0.95	
12628.00	91.380	0.820	7308.00	5005.72	4907.68	986.86	40°11'23.401"N	104°44'54.398"W	2.96	
12688.00	91.630	0.700	7306.42	5064.77	4967.65	987.65	40°11'23.993"N	104°44'54.388"W	0.46	Last BHI MWD Survey
12758.00	91.630	0.700	7304.43	5133.64	5037.62	988.51	40°11'24.685"N	104°44'54.377"W	0.00	Projection to Bit

HOLE & CASING SECTIONS - Ref Wellbore: BROWN 35N-26HZ AWP Ref Wellpath: BROWN 35N-26HZ AWP									
String/Diameter	Start MD [ft]	End MD [ft]	Interval [ft]	Start TVD [ft]	End TVD [ft]	Start N/S [ft]	Start E/W [ft]	End N/S [ft]	End E/W [ft]
13.5in Open Hole	13.00	979.00	966.00	13.00	978.97	0.00	0.00	-3.93	-2.35
9.625in Casing Surface	13.00	979.00	966.00	13.00	978.97	0.00	0.00	-3.93	-2.35
8.75in Open Hole	979.00	7730.00	6751.00	978.97	7299.64	-3.93	-2.35	22.80	812.91
7in Casing Intermediate	13.00	7724.00	7711.00	13.00	7299.37	0.00	0.00	16.81	813.01
6.125in Open Hole	7724.00	12758.00	5034.00	7299.37	7304.43	16.81	813.01	5037.62	988.51



Actual Wellpath Report

BROWN 35N-26HZ AWP

Page 6 of 7



REFERENCE WELLPATH IDENTIFICATION			
Operator	KERR-MCGEE OIL & GAS ONSHORE LP	Slot	SLOT#23 BROWN 35N-26HZ (688'FSL & 501'FWL, SEC.35)
Area	COLORADO	Well	BROWN 35N-26HZ
Field	WELD COUNTY (KERR MCGEE)	Wellbore	BROWN 35N-26HZ AWB
Facility	SEC.35-T3N-R66W		

TARGETS									
Name	MD [ft]	TVD [ft]	North [ft]	East [ft]	Grid East [US ft]	Grid North [US ft]	Latitude	Longitude	Shape
BROWN 15-35HZ PAD SECTION LINES		-38.00	-60.65	2864.90	3211882.34	1307936.64	40°10'34.302"N	104°44'30.206"W	polygon
BROWN PAD SECTION 26 LINES		0.00	0.00	0.00	3209017.16	1307973.13	40°10'34.903"N	104°45'07.114"W	polygon
BROWN 35N-26HZ BHL (460'FSL & 1470'FWL, SEC. 26) REV-2		7310.00	5053.54	969.45	3209943.90	1313034.44	40°11'24.842"N	104°44'54.622"W	point
BROWN 35N-26HZ BHL ON PLAT (460'FSL & 1320'FWL, SEC. 26) REV-1		7310.00	5053.54	819.45	3209793.92	1313033.17	40°11'24.842"N	104°44'56.555"W	point
BROWN 15-35HZ PAD HARDLINES (460' SETBACKS)		7482.00	-60.65	2864.90	3211882.34	1307936.64	40°10'34.302"N	104°44'30.206"W	polygon
BROWN PAD HARDLINES (460'SETBACKS) SEC.26		7482.00	0.00	0.00	3209017.16	1307973.13	40°10'34.903"N	104°45'07.114"W	polygon

WELLPATH COMPOSITION - Ref Wellbore: BROWN 35N-26HZ AWB Ref Wellpath: BROWN 35N-26HZ AWP				
Start MD [ft]	End MD [ft]	Positional Uncertainty Model	Log Name/Comment	Wellbore
13.00	922.00	NaviTrak (Standard)	SURFACE SURVEYS 13 1/2" HOLE <235-922>	BROWN 35N-26HZ AWB
922.00	7675.00	NaviTrak (Standard)	BHI MWD SURVEYS 8 3/4" HOLE <1006-7675>	BROWN 35N-26HZ AWB
7675.00	12688.00	NaviTrak (Standard)	BHI MWD SURVEYS 6 1/8" HOLE <7729-12688>	BROWN 35N-26HZ AWB
12688.00	12758.00	Blind Drilling (std)	Projection to bit	BROWN 35N-26HZ AWB



Actual Wellpath Report

BROWN 35N-26HZ AWP

Page 7 of 7



REFERENCE WELLPATH IDENTIFICATION

Operator	KERR-MCGEE OIL & GAS ONSHORE LP	Slot	SLOT#23 BROWN 35N-26HZ (688'FSL & 501'FWL, SEC.35)
Area	COLORADO	Well	BROWN 35N-26HZ
Field	WELD COUNTY (KERR MCGEE)	Wellbore	BROWN 35N-26HZ AWB
Facility	SEC.35-T3N-R66W		

WELLPATH COMMENTS

MD [ft]	Inclination [°]	Azimuth [°]	TVD [ft]	Comment
13.00	0.000	224.780	13.00	Tie-On
235.00	0.500	224.780	235.00	Begin Surface Surveys
922.00	0.750	121.920	921.98	Tie-Into Surface Surveys
1006.00	1.630	114.910	1005.96	Begin BHI MWD Surveys
7724.00	87.251	359.167	7299.37	7" Casing Point
12688.00	91.630	0.700	7306.42	Last BHI MWD Survey
12758.00	91.630	0.700	7304.43	Projection to Bit