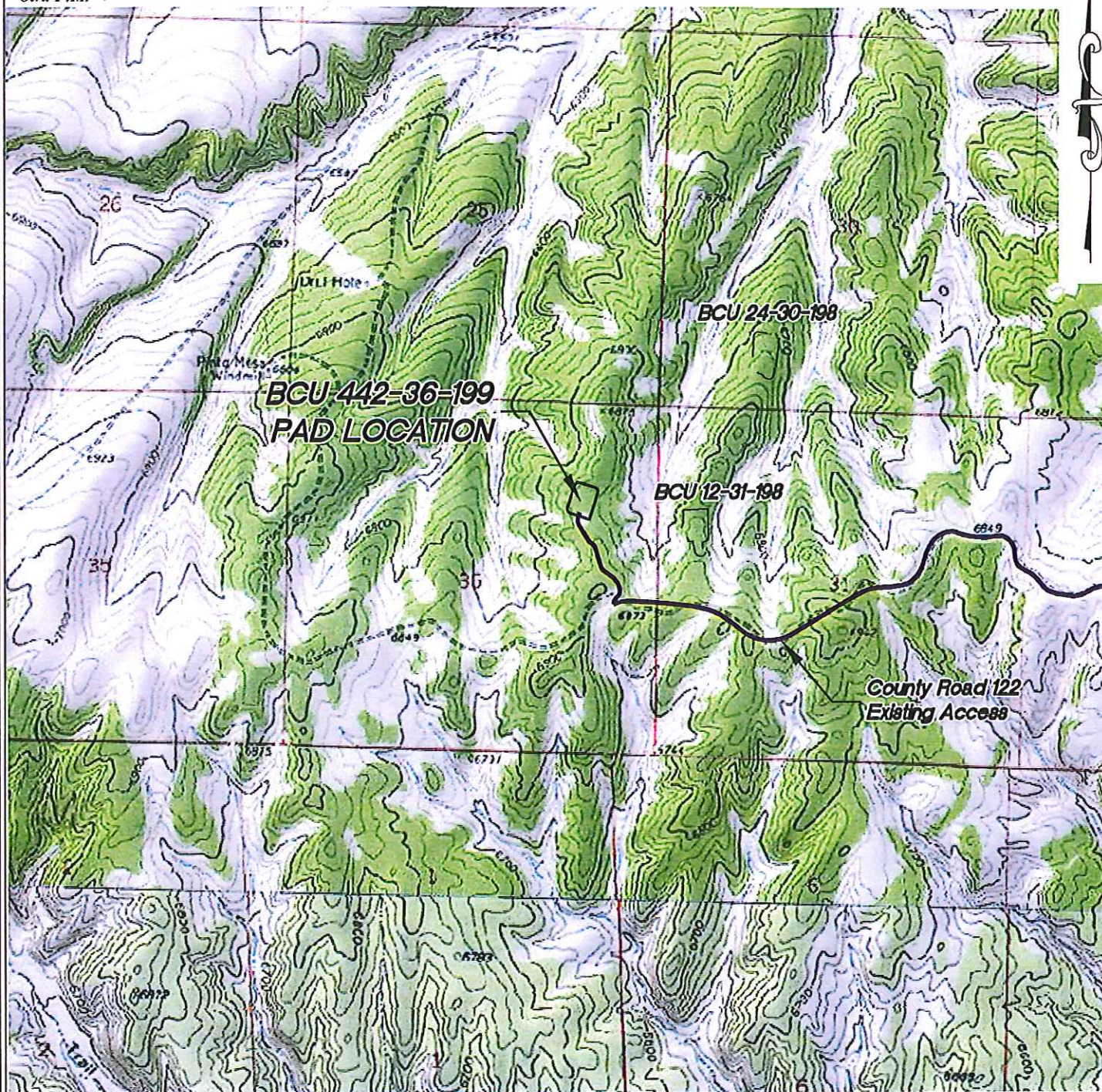


Section 36  
T. 1 N., R 99 W  
6th. P.M.



**ACCESS DESCRIPTION:**

FROM THE INTERSECTION OF STATE HIGHWAY 64 AND RIO BLANCO COUNTY ROAD 5 PROCEED SOUTHERLY ALONG COUNTY ROAD 5  $\pm 4.6$  MILES TO THE INTERSECTION WITH A DIRT/GRAVEL ROAD BEING COUNTY ROAD 20 , PROCEED RIGHT IN A WESTERLY DIRECTION ALONG COUNTY ROAD 20  $\pm 4.9$  MILES TO THE INTERSECTION WITH A DIRT/GRAVEL ROAD BEING COUNTY ROAD 122, PROCEED RIGHT IN A WESTERLY TO SOUTHWESTERLY DIRECTION  $\pm 7.3$  MILES TO AN INTERSECTION WITH A DIRT/GRAVEL ROAD, PROCEED RIGHT IN A NORTHERLY DIRECTION  $\pm 0.3$  MILES TO THE BCU 442-36-199 DRILL PAD LOCATION, AS SHOWN HEREON.

136 East Third Street  
Rifle, Colorado 81650  
Ph. (970) 625-2720  
Fax (970) 625-2773



**BOOKCLIFF**  
Survey Services, Inc.

SCALE: 1" = 2000'  
DATE: 4/9/12  
PLAT: 5 of 7  
PROJECT: Highlands  
DFT: cws

Construction Plan Prepared for:  
**WPX ENERGY** WPX Energy Rocky Mountain, LLC

BCU 442-36-199 Drill Pad - Sheet 5  
ACCESS & TOPOGRAPHY MAP