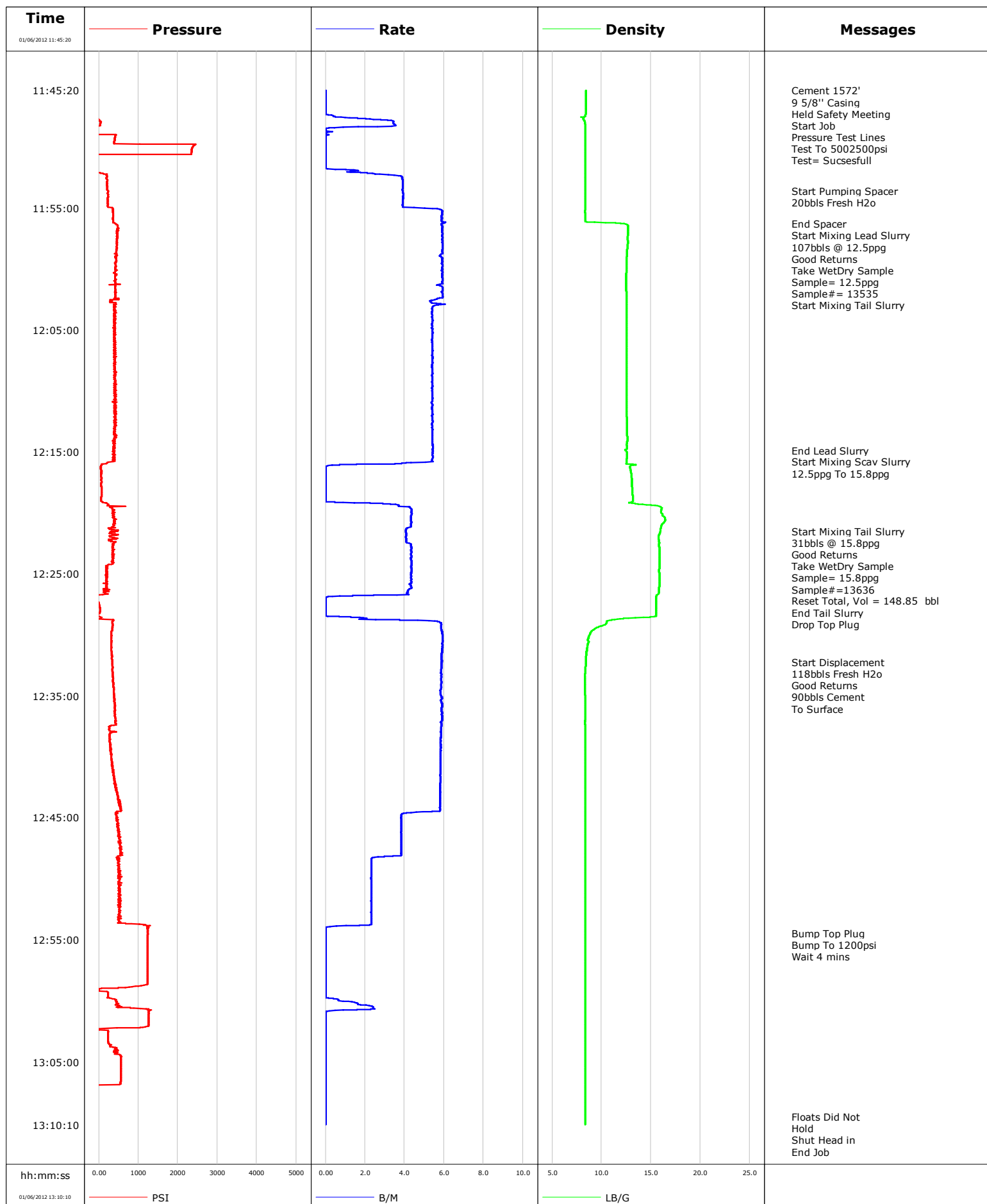


Well	MWV FEDERAL 16-11D	Client	ENCANA
Field	GRASS MESA	SIR No.	BQMF-00534
Engineer		Job Type	SURFACE
Country	United States	Job Date	01-06-2012

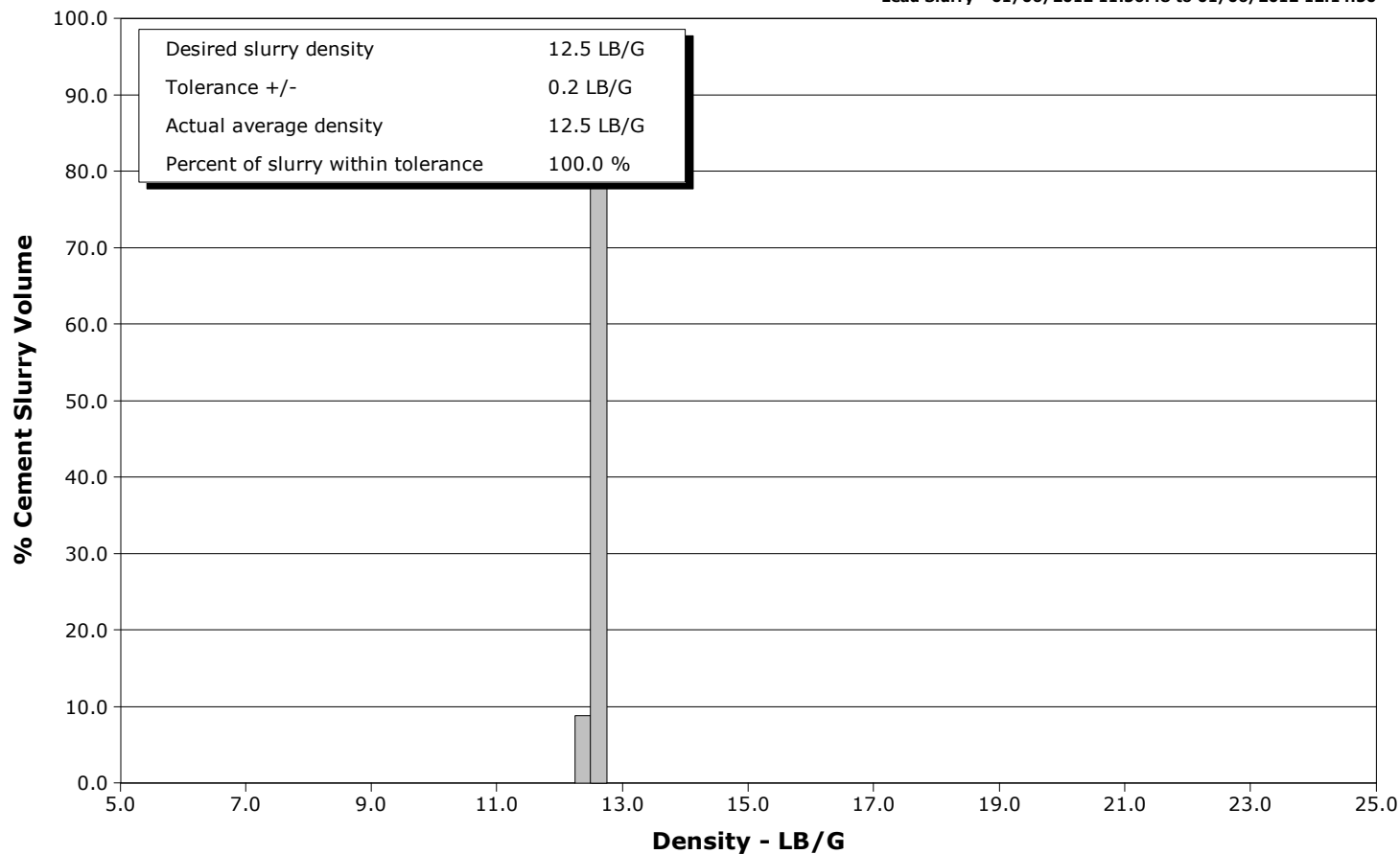


Schlumberger Cementing Qa/Qc Density Report

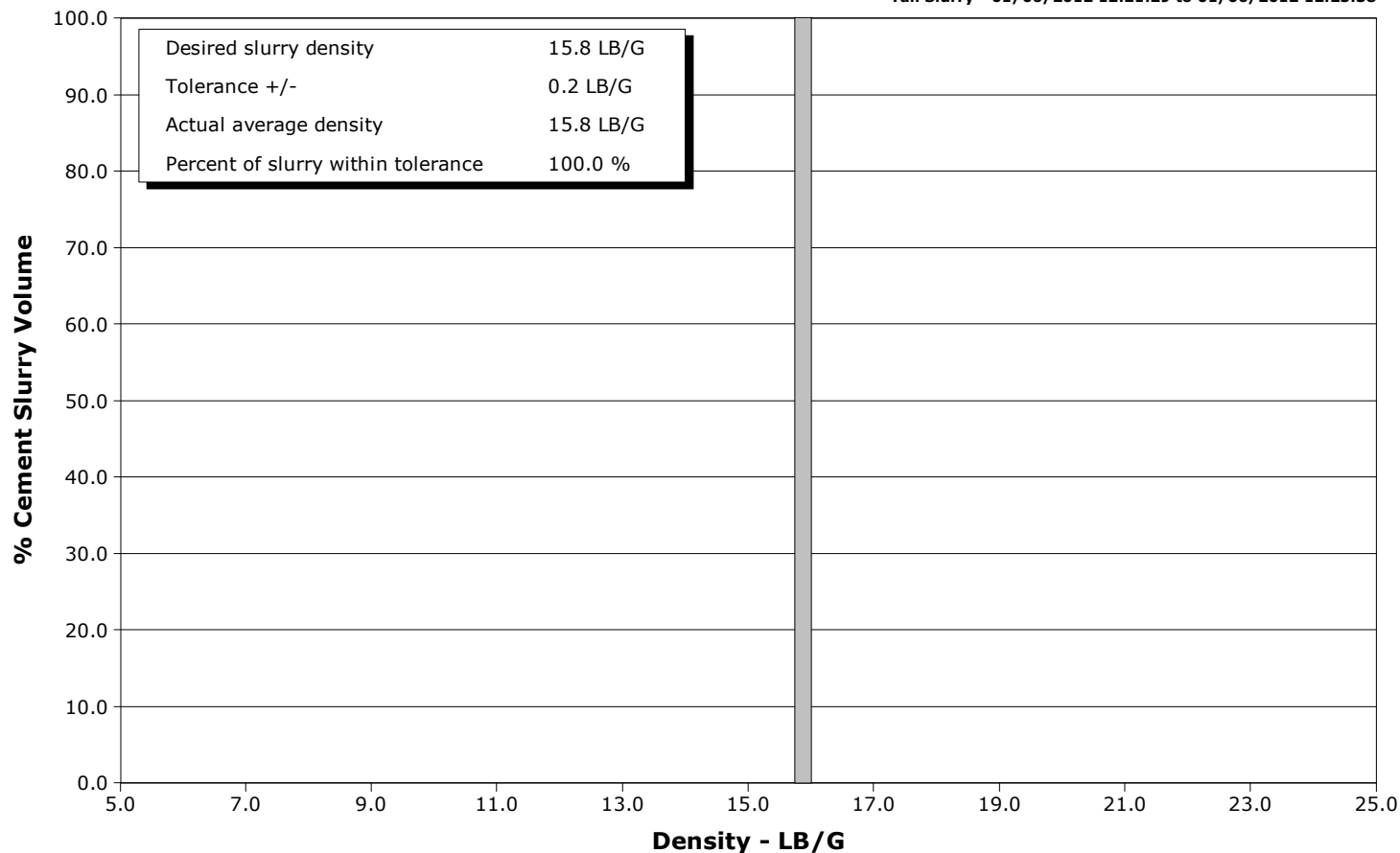
Well MWV FEDERAL 16-11D
Field GRASS MESA
Engineer
Country United States

Client ENCANA
SIR No. BQMF-00534
Job Type SURFACE
Job Date 01-06-2012

Lead Slurry - 01/06/2012 11:56:48 to 01/06/2012 12:14:50



Tail Slurry - 01/06/2012 12:21:29 to 01/06/2012 12:25:38

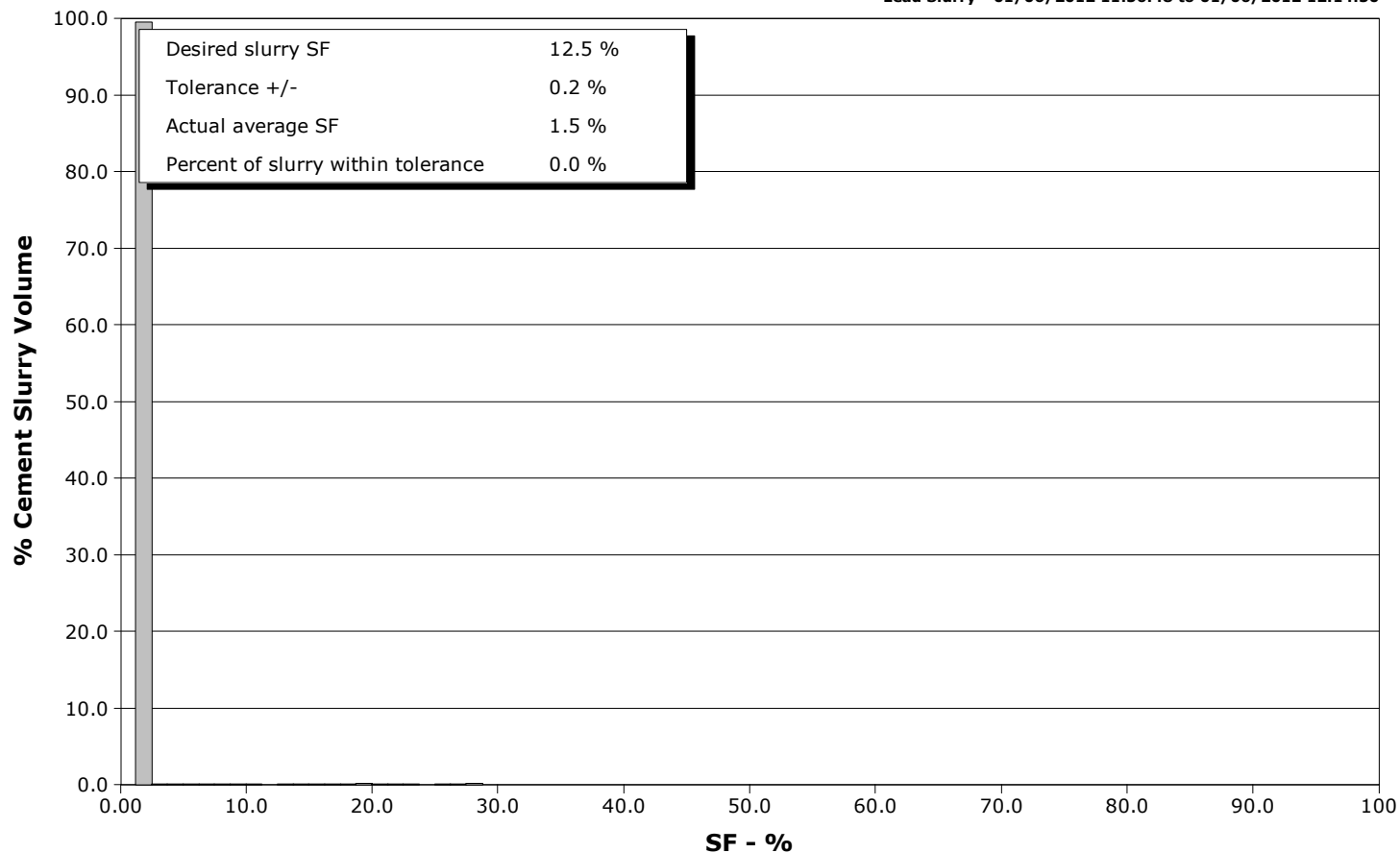


Schlumberger Cementing Qa/Qc SFM Report

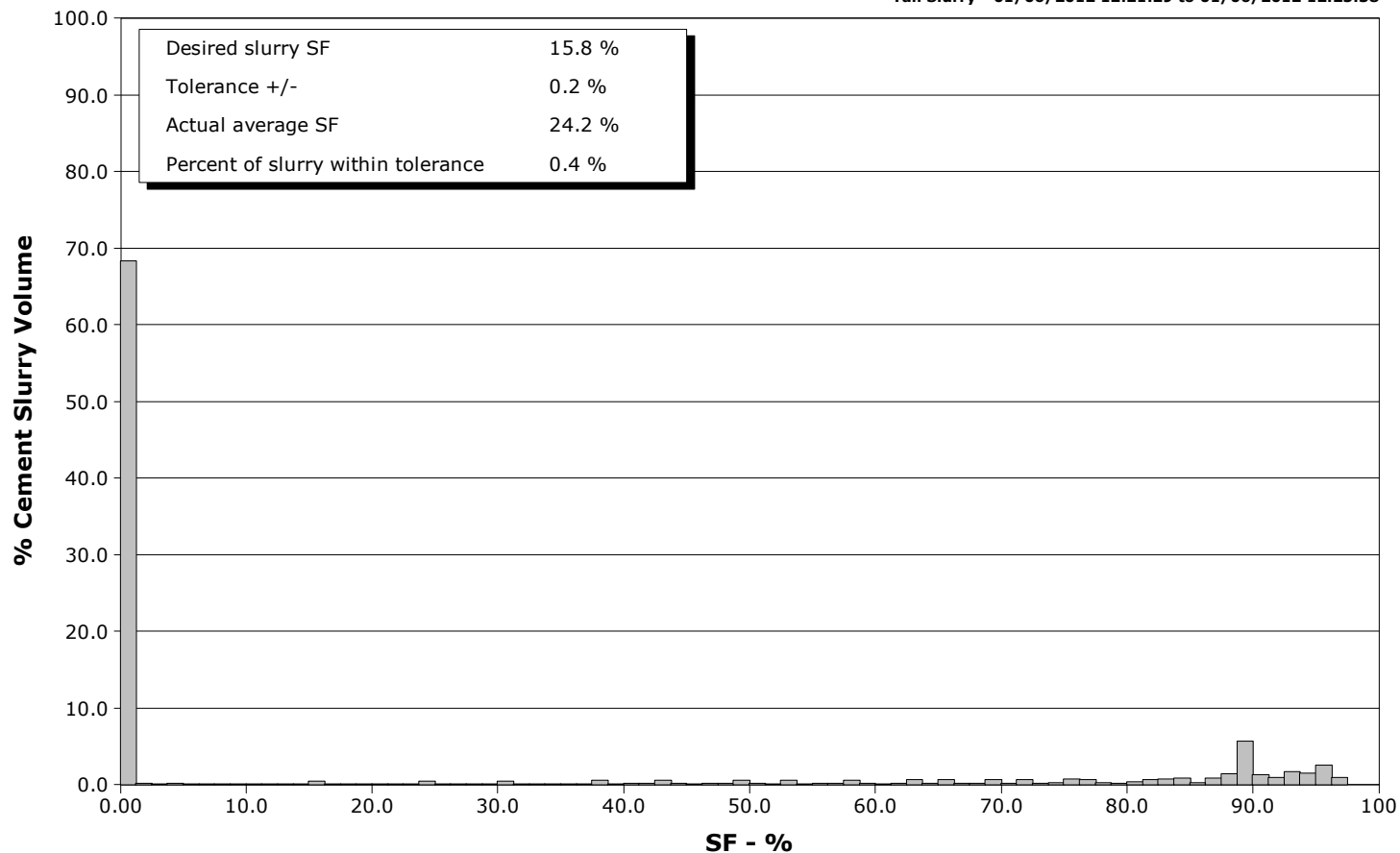
Well MWV FEDERAL 16-11D
Field GRASS MESA
Engineer
Country United States

Client ENCANA
SIR No. BQMF-00534
Job Type SURFACE
Job Date 01-06-2012

Lead Slurry - 01/06/2012 11:56:48 to 01/06/2012 12:14:50



Tail Slurry - 01/06/2012 12:21:29 to 01/06/2012 12:25:38





Cementing Service Report

				Customer ENCANA			Job Number BQMF-00534										
Well MWV FEDERAL 16-11D				Location (legal) GRASS MESA			Schlumberger Location			Job Start Jan/06/2012							
Field GRASS MESA				Formation Name/Type			Deviation		Bit Size		Well MD		Well TVD				
County GARFILED				State/Province Colorado			BHP		BHST		BHCT		Pore Press. Gradient				
Well Master				API/UWI													
Rig Name		Drilled For Gas		Service Via		Casing/Liner											
						Depth,		Size,		Weight,		Grade		Thread			
Offshore Zone		Well Class		Well Type													
Drilling Fluid Type				Max. Density		Plastic Viscosity		Tubing/Drill Pipe									
								Depth,		Size,		Weight,		Grade		Thread	
Service Line Cementing		Job Type SURFACE															
Max. Allowed Tub. Press				Max. Allowed Ann. Press		WH Connection		Perforations/Open Hole									
								Top,		Bottom,				No. of Shots		Total Interval	
Service Instructions 20bbbs water 284sks 12.5 lead 150sks 15.8 tail																Diameter	
Casing/Tubing Secured <input checked="" type="checkbox"/>				1 Hole Vol. Circulated prior to Cement <input checked="" type="checkbox"/>				Casing Tools				Squeeze Job					
Lift Pressure 778 psi								Shoe Type Guide				Squeeze Type					
Pipe Rotated <input type="checkbox"/>				Pipe Reciprocated <input type="checkbox"/>				Shoe Depth 1572.0 ft				Tool Type					
No. Centralizers				Top Plugs 1		Bottom Plugs		Stage Tool Type				Tool Depth					
Cement Head Type Single								Stage Tool Depth				Tail Pipe Size					
Job Scheduled For Jan/06/2012				Arrived on Location Jan/06/2012		Leave Location Jan/06/2012		Collar Type Diff-Fill				Tail Pipe Depth					
								Collar Depth 1525.0 ft				Sqz. Total Vol.					
Date	Time 24-hr clock	Treating Pressure PSI	Flow Rate B/M	Density LB/G	Volume BBL	Message											
01/06/2012	11:12:51					Started Acquisition											
01/06/2012	11:45:20					Cement 1572'											
01/06/2012	11:45:20					9 5/8" Casing											
01/06/2012	11:45:20					Held Safety Meeting											
01/06/2012	11:45:20	-115	0.0	8.40	0.0												
01/06/2012	11:45:21	-116	0.0	8.40	0.0												
01/06/2012	11:45:22					Start Job											
01/06/2012	11:45:22	-116	0.0	8.40	0.0												
01/06/2012	11:45:24					Pressure Test Lines											
01/06/2012	11:45:24	-115	0.0	8.40	0.0												
01/06/2012	11:45:25					Test To 5002500psi											
01/06/2012	11:45:25					Test= Succesfull											
01/06/2012	11:45:25	-115	0.0	8.40	0.0												
01/06/2012	11:45:51	-115	0.0	8.40	0.0												
01/06/2012	11:46:21	-115	0.0	8.40	0.0												
01/06/2012	11:46:51	-118	0.0	8.40	0.0												
01/06/2012	11:47:21	-116	0.1	8.38	0.0												
01/06/2012	11:47:51	21	3.4	8.28	0.7												
01/06/2012	11:48:21	-41	1.7	8.34	2.4												
01/06/2012	11:48:51	-104	0.0	8.34	2.5												
01/06/2012	11:49:21	397	0.0	8.34	2.5												

Well			Field		Job Start	Customer		Job Number
MWV FEDERAL 16-11D			GRASS MESA		Jan/06/2012	ENCANA		BQMF-00534
Date	Time 24-hr clock	Treating Pressure PSI	Flow Rate B/M	Density LB/G	Volume BBL	Message		
01/06/2012	11:50:21	2346	0.0	8.34	2.5			
01/06/2012	11:50:51	-105	0.0	8.34	2.5			
01/06/2012	11:51:21	-106	0.0	8.34	2.5			
01/06/2012	11:51:51	-63	1.0	8.34	2.5			
01/06/2012	11:52:21	202	3.7	8.34	3.6			
01/06/2012	11:52:51	199	3.9	8.34	5.5			
01/06/2012	11:53:21	207	3.9	8.34	7.5			
01/06/2012	11:53:36					Start Pumping Spacer		
01/06/2012	11:53:36	237	3.9	8.34	8.4			
01/06/2012	11:53:37					20bbls Fresh H2o		
01/06/2012	11:53:37	238	3.9	8.34	8.5			
01/06/2012	11:53:51	222	3.9	8.34	9.4			
01/06/2012	11:54:21	217	3.9	8.34	11.4			
01/06/2012	11:54:51	217	3.9	8.34	13.3			
01/06/2012	11:55:21	360	5.9	8.32	16.0			
01/06/2012	11:55:51	364	5.9	8.34	18.9			
01/06/2012	11:56:17					End Spacer		
01/06/2012	11:56:17	425	5.9	12.29	21.5			
01/06/2012	11:56:21	437	5.9	12.59	21.9			
01/06/2012	11:56:48					Start Mixing Lead Slurry		
01/06/2012	11:56:48	457	5.9	12.66	24.5			
01/06/2012	11:56:49					107bbls @ 12.5ppg		
01/06/2012	11:56:49					Good Returns		
01/06/2012	11:56:49	457	5.9	12.66	24.6			
01/06/2012	11:56:50					Take WetDry Sample		
01/06/2012	11:56:50					Sample= 12.5ppg		
01/06/2012	11:56:50					Sample#= 13535		
01/06/2012	11:56:50	494	5.9	12.66	24.7			
01/06/2012	11:56:51	494	5.9	12.66	24.8			
01/06/2012	11:57:21	465	5.9	12.65	27.8			
01/06/2012	11:57:51	461	5.9	12.65	30.7			
01/06/2012	11:58:21	456	5.9	12.60	33.7			
01/06/2012	11:58:51	438	5.8	12.56	36.6			
01/06/2012	11:59:21	442	5.9	12.53	39.6			
01/06/2012	11:59:51	407	5.9	12.52	42.5			
01/06/2012	12:00:00					Start Mixing Tail Slurry		
01/06/2012	12:00:00	423	5.9	12.51	43.4			
01/06/2012	12:00:21	403	5.9	12.50	45.5			
01/06/2012	12:00:51	431	5.9	12.49	48.4			
01/06/2012	12:01:21	407	5.7	12.49	51.4			
01/06/2012	12:01:51	427	5.9	12.50	54.3			
01/06/2012	12:02:21	401	5.9	12.51	57.3			
01/06/2012	12:02:51	439	5.9	12.51	60.0			
01/06/2012	12:03:21	375	5.4	12.53	62.8			
01/06/2012	12:03:51	371	5.4	12.53	65.5			
01/06/2012	12:04:21	372	5.4	12.53	68.2			
01/06/2012	12:04:51	371	5.4	12.52	70.9			
01/06/2012	12:05:21	375	5.4	12.51	73.6			
01/06/2012	12:05:51	401	5.4	12.50	76.3			
01/06/2012	12:06:21	406	5.4	12.51	79.0			
01/06/2012	12:06:51	417	5.4	12.52	81.7			
01/06/2012	12:07:21	417	5.4	12.52	84.4			
01/06/2012	12:07:51	407	5.4	12.52	87.1			
01/06/2012	12:08:21	415	5.4	12.52	89.8			

Well			Field		Job Start	Customer	Job Number
MWV FEDERAL 16-11D			GRASS MESA		Jan/06/2012	ENCANA	BQMF-00534
Date	Time 24-hr clock	Treating Pressure PSI	Flow Rate B/M	Density LB/G	Volume BBL	Message	
01/06/2012	12:09:21	410	5.4	12.53	95.2		
01/06/2012	12:09:51	409	5.4	12.54	97.9		
01/06/2012	12:10:21	405	5.4	12.54	100.6		
01/06/2012	12:10:51	393	5.4	12.53	103.3		
01/06/2012	12:11:21	396	5.4	12.53	106.0		
01/06/2012	12:11:51	395	5.4	12.54	108.7		
01/06/2012	12:12:21	437	5.4	12.56	111.4		
01/06/2012	12:12:51	436	5.4	12.56	114.1		
01/06/2012	12:13:21	411	5.4	12.58	116.8		
01/06/2012	12:13:51	432	5.4	12.64	119.5		
01/06/2012	12:14:21	371	5.4	12.56	122.2		
01/06/2012	12:14:50					End Lead Slurry	
01/06/2012	12:14:50	367	5.4	12.37	124.9		
01/06/2012	12:14:51	363	5.4	12.36	124.9		
01/06/2012	12:14:55					Start Mixing Scav Slurry	
01/06/2012	12:14:55	398	5.4	12.49	125.3		
01/06/2012	12:14:56					12.5ppg To 15.8ppg	
01/06/2012	12:14:56	398	5.4	12.49	125.4		
01/06/2012	12:15:21	367	5.4	12.57	127.7		
01/06/2012	12:15:51	229	5.1	12.54	130.4		
01/06/2012	12:16:21	54	0.0	12.89	131.1		
01/06/2012	12:16:51	61	0.0	13.01	131.1		
01/06/2012	12:17:21	61	0.0	13.05	131.1		
01/06/2012	12:17:51	62	0.0	13.09	131.1		
01/06/2012	12:18:21	65	0.0	13.13	131.1		
01/06/2012	12:18:51	55	0.0	13.15	131.1		
01/06/2012	12:19:21	242	3.7	15.03	131.6		
01/06/2012	12:19:51	360	4.4	16.02	133.7		
01/06/2012	12:20:21	385	4.3	16.37	135.9		
01/06/2012	12:20:51	398	4.3	16.24	138.1		
01/06/2012	12:21:21	378	4.1	15.97	140.2		
01/06/2012	12:21:29					Start Mixing Tail Slurry	
01/06/2012	12:21:29	423	4.1	15.96	140.7		
01/06/2012	12:21:47					31bbls @ 15.8ppg	
01/06/2012	12:21:47	490	4.1	15.82	141.9		
01/06/2012	12:21:48					Good Returns	
01/06/2012	12:21:48					Take WetDry Sample	
01/06/2012	12:21:48					Sample= 15.8ppg	
01/06/2012	12:21:48					Sample#=13636	
01/06/2012	12:21:48	490	4.1	15.82	142.0		
01/06/2012	12:21:51	349	4.1	15.79	142.2		
01/06/2012	12:22:21	298	4.1	15.82	144.3		
01/06/2012	12:22:51	350	4.3	15.84	146.4		
01/06/2012	12:23:21	358	4.3	15.87	148.6		
01/06/2012	12:23:25					Reset Total, Vol = 148.85 bbl	
01/06/2012	12:23:25	342	4.3	15.87	148.8		
01/06/2012	12:23:51	350	4.3	15.87	150.7		
01/06/2012	12:24:21	182	4.3	15.86	152.9		
01/06/2012	12:24:51	189	4.3	15.83	155.1		
01/06/2012	12:25:21	207	4.3	15.85	157.2		
01/06/2012	12:25:38					End Tail Slurry	
01/06/2012	12:25:38	213	4.4	15.84	158.5		
01/06/2012	12:25:39					Drop Top Plug	
01/06/2012	12:25:39	189	4.3	15.84	158.5		

Well			Field		Job Start	Customer		Job Number
MWV FEDERAL 16-11D			GRASS MESA		Jan/06/2012	ENCANA		BQMF-00534
Date	Time 24-hr clock	Treating Pressure PSI	Flow Rate B/M	Density LB/G	Volume BBL	Message		
01/06/2012	12:26:21	121	4.2	15.82	161.6			
01/06/2012	12:26:51	-93	0.3	15.54	163.3			
01/06/2012	12:27:21	-5	0.0	15.51	163.3			
01/06/2012	12:27:51	28	0.0	15.50	163.3			
01/06/2012	12:28:21	-39	0.0	15.51	163.3			
01/06/2012	12:28:51	365	5.2	10.64	164.2			
01/06/2012	12:29:21	342	5.8	9.75	167.1			
01/06/2012	12:29:51	316	5.9	8.87	170.0			
01/06/2012	12:30:21	312	5.9	8.62	172.9			
01/06/2012	12:30:51	315	5.9	8.58	175.9			
01/06/2012	12:31:21	322	5.9	8.48	178.9			
01/06/2012	12:31:51	330	5.9	8.42	181.8			
01/06/2012	12:32:14					Start Displacement		
01/06/2012	12:32:14	343	5.9	8.40	184.0			
01/06/2012	12:32:15					118bbls Fresh H2o		
01/06/2012	12:32:15					Good Returns		
01/06/2012	12:32:15	338	5.9	8.39	184.1			
01/06/2012	12:32:21	334	5.9	8.39	184.7			
01/06/2012	12:32:51	338	5.9	8.36	187.7			
01/06/2012	12:33:21	345	5.9	8.33	190.6			
01/06/2012	12:33:51	354	5.9	8.32	193.5			
01/06/2012	12:33:59					90bbls Cement		
01/06/2012	12:33:59	365	5.9	8.32	194.3			
01/06/2012	12:34:14					To Surface		
01/06/2012	12:34:14	362	5.9	8.32	195.8			
01/06/2012	12:34:21	371	5.9	8.32	196.4			
01/06/2012	12:34:51	377	5.8	8.33	199.4			
01/06/2012	12:35:21	393	5.8	8.34	202.3			
01/06/2012	12:35:51	393	5.9	8.34	205.2			
01/06/2012	12:36:21	397	5.9	8.34	208.2			
01/06/2012	12:36:51	421	5.9	8.34	211.1			
01/06/2012	12:37:21	425	5.9	8.33	214.0			
01/06/2012	12:37:51	269	5.8	8.35	217.0			
01/06/2012	12:38:21	258	5.8	8.35	219.9			
01/06/2012	12:38:51	282	5.8	8.35	222.8			
01/06/2012	12:39:21	309	5.8	8.35	225.7			
01/06/2012	12:39:51	323	5.8	8.35	228.6			
01/06/2012	12:40:21	320	5.8	8.35	231.6			
01/06/2012	12:40:51	353	5.8	8.35	234.5			
01/06/2012	12:41:21	379	5.8	8.35	237.4			
01/06/2012	12:41:51	382	5.8	8.35	240.3			
01/06/2012	12:42:21	413	5.8	8.35	243.2			
01/06/2012	12:42:51	460	5.8	8.35	246.1			
01/06/2012	12:43:21	479	5.8	8.35	249.0			
01/06/2012	12:43:51	544	5.8	8.35	251.9			
01/06/2012	12:44:21	564	5.8	8.35	254.8			
01/06/2012	12:44:51	458	3.8	8.35	257.1			
01/06/2012	12:45:21	466	3.8	8.35	259.0			
01/06/2012	12:45:51	490	3.8	8.35	260.9			
01/06/2012	12:46:21	502	3.8	8.35	262.8			
01/06/2012	12:46:51	516	3.8	8.35	264.7			
01/06/2012	12:47:21	530	3.8	8.35	266.7			
01/06/2012	12:47:51	572	3.8	8.35	268.6			
01/06/2012	12:48:21	504	2.3	8.35	270.2			

Well			Field		Job Start	Customer		Job Number
MWV FEDERAL 16-11D			GRASS MESA		Jan/06/2012	ENCANA		BQMF-00534
Date	Time 24-hr clock	Treating Pressure PSI	Flow Rate B/M	Density LB/G	Volume BBL	Message		
01/06/2012	12:49:21	542	2.3	8.35	272.5			
01/06/2012	12:49:51	570	2.3	8.35	273.7			
01/06/2012	12:50:21	568	2.3	8.35	274.9			
01/06/2012	12:50:51	543	2.3	8.35	276.0			
01/06/2012	12:51:21	535	2.3	8.35	277.2			
01/06/2012	12:51:51	528	2.3	8.35	278.3			
01/06/2012	12:52:21	502	2.3	8.35	279.5			
01/06/2012	12:52:51	516	2.3	8.35	280.6			
01/06/2012	12:53:21	490	2.3	8.35	281.8			
01/06/2012	12:53:51	1291	1.0	8.35	282.9			
01/06/2012	12:54:21	1231	0.0	8.36	283.0			
01/06/2012	12:54:27					Bump Top Plug		
01/06/2012	12:54:27	1242	0.0	8.36	283.0			
01/06/2012	12:54:29					Bump To 1200psi		
01/06/2012	12:54:29	1234	0.0	8.36	283.0			
01/06/2012	12:54:38					Wait 4 mins		
01/06/2012	12:54:38	1236	0.0	8.36	283.0			
01/06/2012	12:54:51	1237	0.0	8.36	283.0			
01/06/2012	12:55:21	1235	0.0	8.36	283.0			
01/06/2012	12:55:51	1235	0.0	8.36	283.0			
01/06/2012	12:56:21	1234	0.0	8.36	283.0			
01/06/2012	12:56:51	1233	0.0	8.36	283.0			
01/06/2012	12:57:21	1233	0.0	8.36	283.0			
01/06/2012	12:57:51	1233	0.0	8.36	283.0			
01/06/2012	12:58:21	1232	0.0	8.36	283.0			
01/06/2012	12:58:51	845	0.0	8.36	283.0			
01/06/2012	12:59:21	223	0.0	8.36	283.0			
01/06/2012	12:59:51	352	0.5	8.36	283.0			
01/06/2012	13:00:21	425	1.8	8.36	283.6			
01/06/2012	13:00:51	1279	0.2	8.36	284.6			
01/06/2012	13:01:21	1261	0.0	8.36	284.6			
01/06/2012	13:01:51	1258	0.0	8.36	284.6			
01/06/2012	13:02:21	-19	0.0	8.36	284.6			
01/06/2012	13:02:51	227	0.0	8.36	284.6			
01/06/2012	13:03:21	228	0.0	8.36	284.6			
01/06/2012	13:03:51	423	0.0	8.36	284.6			
01/06/2012	13:04:21	457	0.0	8.36	284.6			
01/06/2012	13:04:51	556	0.0	8.36	284.6			
01/06/2012	13:05:21	554	0.0	8.36	284.6			
01/06/2012	13:05:51	554	0.0	8.36	284.6			
01/06/2012	13:06:21	553	0.0	8.36	284.6			
01/06/2012	13:06:51	551	0.0	8.36	284.6			
01/06/2012	13:07:21	-111	0.0	8.36	284.6			
01/06/2012	13:07:51	-112	0.0	8.36	284.6			
01/06/2012	13:08:21	-112	0.0	8.36	284.6			
01/06/2012	13:08:51	-112	0.0	8.36	284.6			
01/06/2012	13:09:21	-112	0.0	8.36	284.6			
01/06/2012	13:09:30					Floats Did Not		
01/06/2012	13:09:30					Hold		
01/06/2012	13:09:30	-112	0.0	8.36	284.6			
01/06/2012	13:09:51	-111	0.0	8.36	284.6			
01/06/2012	13:09:56					Shut Head in		
01/06/2012	13:09:56	-111	0.0	8.36	284.6			
01/06/2012	13:10:07					End Job		

Well MWV FEDERAL 16-11D	Field GRASS MESA	Job Start Jan/06/2012	Customer ENCANA	Job Number BQMF-00534
-----------------------------------	----------------------------	---------------------------------	---------------------------	---------------------------------

Post Job Summary

Average Pump Rates, bbl/min					Volume of Fluid Injected, bbl			
Slurry 4.7	N2	Mud 0.0	Maximum Rate 6.1	Total Slurry 284.6	Mud 0.0	Spacer 21.4	N2	
Treating Pressure Summary, psi					Breakdown Fluid			
Maximum 2453	Final -67	Average 466	Bump Plug to 1200	Breakdown	Type	Volume	Density	
Avg. N2 Percent		Designed Slurry Volume 138.0 bbl	Displacement 124.5 bbl	Mix Water Temp 55 degF	Cement Circulated to Surface? <input checked="" type="checkbox"/>	Volume 90.0 bbl		
					Washed Thru Perfs <input type="checkbox"/>	To		
Customer or Authorized Representative MARCO SILVA			Schlumberger Supervisor			Circulation Lost <input type="checkbox"/>	Job Completed <input checked="" type="checkbox"/>	
					-		-	