

T2N, R102W, 6th P.M.

CHEVRON U.S.A., INC.

Well location, FEE #163X (TARGET BOTTOM HOLE), located as shown in the SE 1/4 SE 1/4 of Section 28, T2N, R102W, 6th P.M., Rio Blanco County, Colorado.

BASIS OF ELEVATION

GOLF TRIANGULATION STATION LOCATED IN THE SE 1/4 OF SECTION 30, T2N, R102W, 6th P.M., TAKEN FROM THE BANTY POINT QUADRANGLE, COLORADO, RIO BLANCO COUNTY, 7.5 MINUTE QUAD. (TOPOGRAPHIC MAP) PUBLISHED BY THE UNITED STATES DEPARTMENT OF THE INTERIOR, GEOLOGICAL SURVEY. SAID ELEVATION IS MARKED AS BEING 5311 FEET.

BASIS OF BEARINGS

BASIS OF BEARINGS IS A G.P.S. OBSERVATION.

LINE TABLE		
LINE	DIRECTION	LENGTH
L1	N05°30'42"E	452.82'



CERTIFICATE

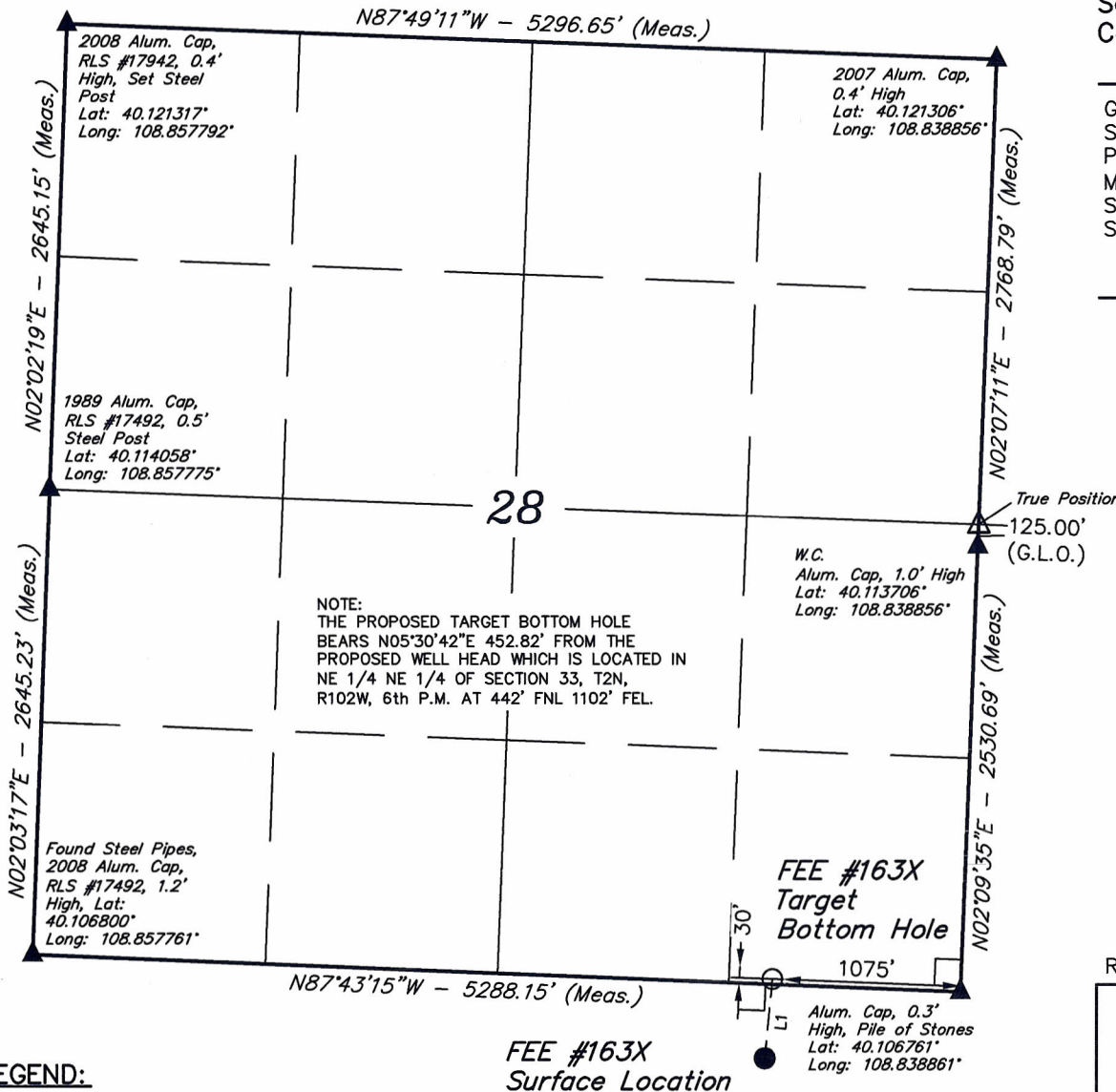
THIS IS TO CERTIFY THAT THE ABOVE PLAT WAS PREPARED FROM FIELD NOTES OF ACTUAL SURVEYS MADE BY ME OR UNDER MY SUPERVISION AND THAT THE SAME ARE TRUE AND CORRECT TO THE BEST OF MY KNOWLEDGE AND BELIEF.

REGISTERED LAND SURVEYOR
REGISTRATION NO. 17492
STATE OF COLORADO

REVISED: 09-24-12

UINTAH ENGINEERING & LAND SURVEYING
85 SOUTH 200 EAST - VERNAL, UTAH 84078
(435) 789-1017

SCALE 1" = 1000'	DATE SURVEYED: 09-13-12	DATE DRAWN: 09-18-12
PARTY J.F. D.D. T.B.	REFERENCES G.L.O. PLAT	
WEATHER WARM	FILE CHEVRON U.S.A., INC.	



LEGEND:

- └─┘ = 90° SYMBOL
- = PROPOSED WELL HEAD.
- ▲ = SECTION CORNERS LOCATED.
- △ = SECTION CORNERS RE-ESTABLISHED. (Not Set on Ground.)

NAD 83 (TARGET BOTTOM HOLE)	
LATITUDE = 40°06'24.66" (40.106850)	
LONGITUDE = 108°50'33.74" (108.842706)	
NAD 27 (TARGET BOTTOM HOLE)	
LATITUDE = 40°06'24.75" (40.106875)	
LONGITUDE = 108°50'31.35" (108.842042)	