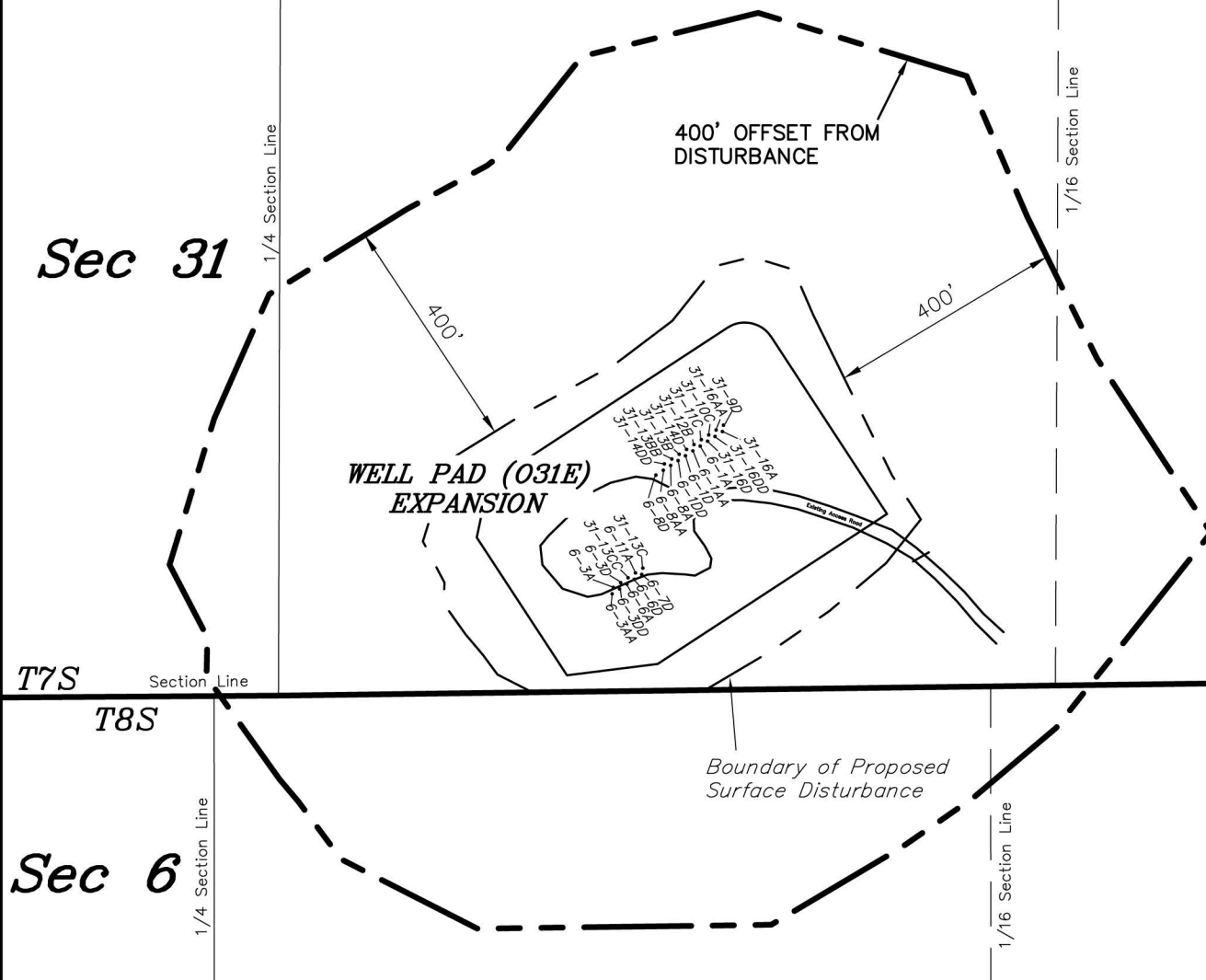


ENCANA OIL & GAS (USA) INC

SURFACE DISTURBANCE AREA WELL PAD (031E) EXPANSION Section 31, T7S, R92W, 6th P.M.



Distances from Well Heads

WELL	BUILDING	ABOVE GROUND UTILITY	PUBLIC ROAD	RAILROAD
31-9D	6,603'	6,603'	1,778'	9.76 MILES
31-16A	6,614'	6,614'	1,779'	9.76 MILES
31-16AA	6,609'	6,609'	1,768'	9.76 MILES
31-16DD	6,609'	6,609'	1,768'	9.76 MILES
31-10C	6,615'	6,615'	1,757'	9.76 MILES
31-16D	6,626'	6,626'	1,758'	9.76 MILES
31-11C	6,621'	6,621'	1,747'	9.76 MILES
6-1A	6,632'	6,632'	1,747'	9.76 MILES
31-12B	6,627'	6,627'	1,736'	9.76 MILES
6-1AA	6,638'	6,638'	1,737'	9.76 MILES
31-14D	6,633'	6,633'	1,726'	9.76 MILES
6-1D	6,644'	6,644'	1,727'	9.76 MILES
31-13B	6,640'	6,640'	1,716'	9.76 MILES
6-1DD	6,650'	6,650'	1,716'	9.76 MILES
31-13BB	6,646'	6,646'	1,706'	9.76 MILES

Distances from Well Heads

WELL	BUILDING	ABOVE GROUND UTILITY	PUBLIC ROAD	RAILROAD
6-8A	6,656'	6,656'	1,706'	9.76 MILES
31-14DD	6,652'	6,652'	1,695'	9.76 MILES
6-8AA	6,662'	6,662'	1,696'	9.76 MILES
6-8D	6,668'	6,668'	1,686'	9.76 MILES
31-13C	6,821'	6,821'	1,714'	9.76 MILES
6-7D	6,832'	6,832'	1,713'	9.76 MILES
6-11A	6,828'	6,828'	1,706'	9.76 MILES
6-6D	6,838'	6,838'	1,708'	9.76 MILES
31-13CC	6,834'	6,834'	1,697'	9.76 MILES
6-6A	6,844'	6,844'	1,699'	9.76 MILES
6-3D	6,840'	6,840'	1,688'	9.76 MILES
6-3DD	6,851'	6,851'	1,691'	9.76 MILES
6-3A	6,847'	6,847'	1,680'	9.76 MILES
6-3AA	6,857'	6,857'	1,682'	9.76 MILES

SURVEYED BY: C.D.S. DATE SURVEYED: 11-13-10
 DRAWN BY: M.W. DATE DRAWN: 11-22-11
 SCALE: 1" = 300' REVISED: M.W. 09-10-12

Tri State
 Land Surveying, Inc.
 180 NORTH VERNAL AVE. VERNAL, UTAH 84078
 (435) 781-2501

SHEET
31
 37