

T7S, R92W, 6th P.M.

ENCANA OIL & GAS (USA) INC

GENERAL MULTI WELL PLAN
SECTION DRILLING MAP

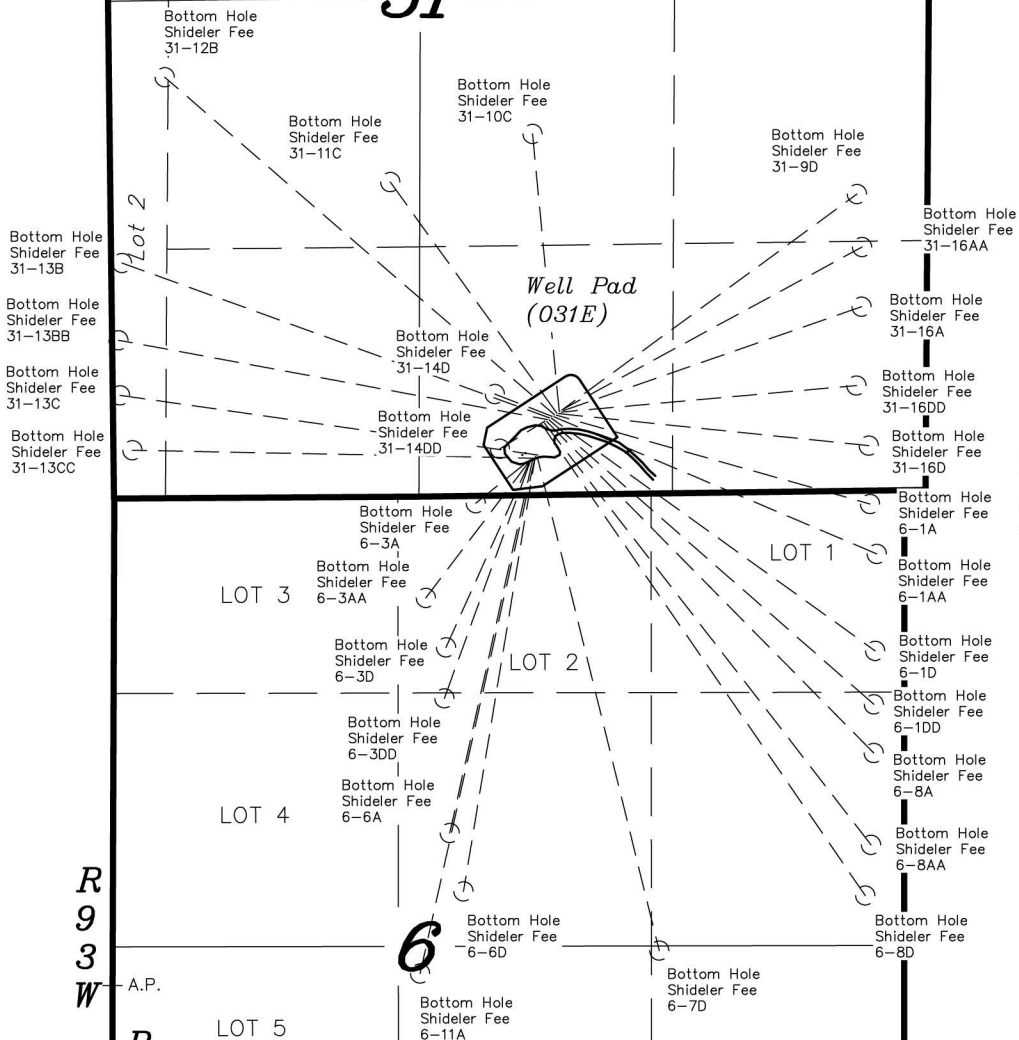
WELL PAD (031E)
T7S, R92W, 6th P.M.

31



Well Pad
(031E)

T7S
T8S



1

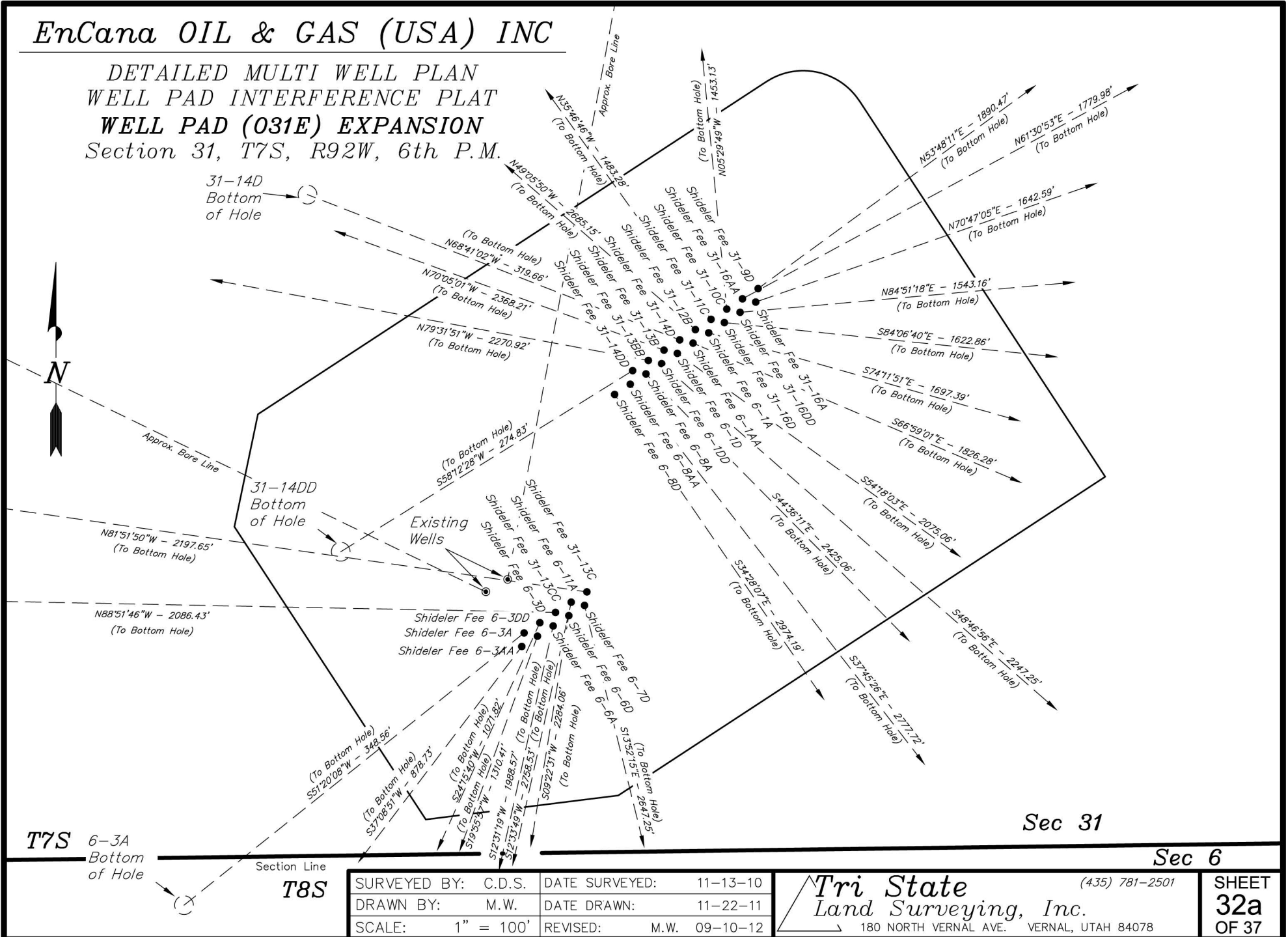
R
9
3
W
A.P.
R
9
2
W

TRI STATE LAND SURVEYING & CONSULTING
180 NORTH VERNAL AVE. - VERNAL, UTAH 84078
(435) 781-2501

DATE SURVEYED: 11-13-10	SURVEYED BY: C.D.S.	SHEET 1 OF 37
DATE DRAWN: 11-23-11	DRAWN BY: M.W.	
REVISED: 09-10-12 M.W.	SCALE: 1" = 1000'	

EnCana OIL & GAS (USA) INC

DETAILED MULTI WELL PLAN WELL PAD INTERFERENCE PLAT WELL PAD (031E) EXPANSION Section 31, T7S, R92W, 6th P.M.



Sec 31

Sec 6

T7S 6-3A Bottom of Hole

T8S

SURVEYED BY:	C.D.S.	DATE SURVEYED:	11-13-10
DRAWN BY:	M.W.	DATE DRAWN:	11-22-11
SCALE:	1" = 100'	REVISED:	M.W. 09-10-12

Tri State (435) 781-2501
 Land Surveying, Inc.
 180 NORTH VERNAL AVE. VERNAL, UTAH 84078

SHEET 32a OF 37

EnCana OIL & GAS (USA) INC

DETAILED MULTI WELL PLAN WELL PAD INTERFERENCE PLAT WELL PAD (031E) EXPANSION

Section 31, T7S, R92W, 6th P.M.

TOP HOLE FOOTAGES

SHIDELER FEE 31-9D (031E)
449' FSL & 1886' FEL

SHIDELER FEE 31-16A (031E)
438' FSL & 1888' FEL

SHIDELER FEE 31-16AA (031E)
441' FSL & 1898' FEL

SHIDELER FEE 31-16DD (031E)
430' FSL & 1900' FEL

SHIDELER FEE 31-10C (031E)
433' FSL & 1911' FEL

SHIDELER FEE 31-16D (031E)
422' FSL & 1913' FEL

SHIDELER FEE 31-11C (031E)
425' FSL & 1923' FEL

SHIDELER FEE 6-1A (031E)
414' FSL & 1925' FEL

SHIDELER FEE 31-12B (031E)
417' FSL & 1936' FEL

SHIDELER FEE 6-1AA (031E)
406' FSL & 1938' FEL

SHIDELER FEE 31-14D (031E)
409' FSL & 1948' FEL

SHIDELER FEE 6-1D (031E)
398' FSL & 1950' FEL

SHIDELER FEE 31-13B (031E)
401' FSL & 1961' FEL

SHIDELER FEE 6-1DD (031E)
390' FSL & 1963' FEL

SHIDELER FEE 31-13BB (031E)
393' FSL & 1973' FEL

SHIDELER FEE 6-8A (031E)
382' FSL & 1975' FEL

SHIDELER FEE 31-14DD (031E)
385' FSL & 1986' FEL

SHIDELER FEE 6-8AA (031E)
374' FSL & 1988' FEL

SHIDELER FEE 6-8D (031E)
366' FSL & 2000' FEL

SHIDELER FEE 31-13C (031E)
208' FSL & 2021' FEL

SHIDELER FEE 6-7D (031E)
198' FSL & 2023' FEL

SHIDELER FEE 6-11A (031E)
200' FSL & 2034' FEL

SHIDELER FEE 6-6D (031E)
190' FSL & 2036' FEL

SHIDELER FEE 31-13CC (031E)
192' FSL & 2046' FEL

SHIDELER FEE 6-6A (031E)
182' FSL & 2048' FEL

SHIDELER FEE 6-3D (031E)
184' FSL & 2059' FEL

SHIDELER FEE 6-3DD (031E)
173' FSL & 2061' FEL

RELATIVE COORDINATES
From top hole to bottom hole

WELL	NORTH	EAST
31-9D	1,116'	1,526'
31-16A	541'	1,551'
31-16AA	849'	1,564'
31-16DD	138'	1,537'
31-10C	1,446'	-139'
31-16D	-167'	1,614'
31-11C	1,203'	-867'
6-1A	-462'	1,633'
31-12B	1,758'	-2,029'
6-1AA	-714'	1,681'
31-14D	116'	-298'
6-1D	-1,211'	1,685'
31-13B	807'	-2,227'
6-1DD	-1,481'	1,690'
31-13BB	413'	-2,233'
6-8A	-1,727'	1,703'
31-14DD	-145'	-234'
6-8AA	-2,196'	1,701'
6-8D	-2,452'	1,683'
31-13C	311'	-2,176'
6-7D	-2,570'	635'
6-11A	-2,692'	-600'
6-6D	-2,254'	-372'
31-13CC	41'	-2,086'
6-6A	-1,941'	-431'
6-3D	-977'	-440'
6-3DD	-1,232'	-447'
6-3A	-218'	-272'
6-3AA	-700'	-531'

BOTTOM HOLE FOOTAGES

SHIDELER FEE 31-9D (031E)
1546' FSL & 367' FEL

SHIDELER FEE 31-16A (031E)
959' FSL & 340' FEL

SHIDELER FEE 31-16AA (031E)
1270' FSL & 339' FEL

SHIDELER FEE 31-16DD (031E)
549' FSL & 364' FEL

SHIDELER FEE 31-10C (031E)
1881' FSL & 2059' FEL

SHIDELER FEE 31-16D (031E)
235' FSL & 297' FEL

SHIDELER FEE 31-11C (031E)
1639' FSL & 1459' FWL

SHIDELER FEE 6-1A (031E)
69' FNL & 179' FEL

SHIDELER FEE 31-12B (031E)
2193' FSL & 291' FEL

SHIDELER FEE 6-1AA (031E)
330' FNL & 144' FEL

SHIDELER FEE 31-14D (031E)
529' FSL & 2247' FEL

SHIDELER FEE 6-1D (031E)
834' FNL & 152' FEL

SHIDELER FEE 31-13B (031E)
1227' FSL & 57' FWL

SHIDELER FEE 6-1DD (031E)
1112' FNL & 159' FEL

SHIDELER FEE 31-13BB (031E)
825' FSL & 33' FWL

SHIDELER FEE 6-8A (031E)
1367' FNL & 159' FEL

SHIDELER FEE 31-14DD (031E)
243' FSL & 2218' FEL

SHIDELER FEE 6-8AA (031E)
1844' FNL & 173' FEL

SHIDELER FEE 6-8D (031E)
2108' FNL & 203' FEL

SHIDELER FEE 31-13C (031E)
538' FSL & 38' FWL

SHIDELER FEE 6-7D (031E)
2609' FSL & 1276' FEL

SHIDELER FEE 6-11A (031E)
2490' FSL & 2521' FEL

SHIDELER FEE 6-6D (031E)
2059' FNL & 2295' FEL

SHIDELER FEE 31-13CC (031E)
251' FSL & 99' FWL

SHIDELER FEE 6-6A (031E)
1754' FNL & 2367' FEL

SHIDELER FEE 6-3D (031E)
787' FNL & 2387' FEL

SHIDELER FEE 6-3DD (031E)
1053' FNL & 2395' FEL

TOP HOLE FOOTAGES

SHIDELER FEE 6-3A (031E)
176' FSL & 2071' FEL

SHIDELER FEE 6-3AA (031E)
165' FSL & 2073' FEL

BOTTOM HOLE FOOTAGES

SHIDELER FEE 6-3A (031E)
38' FNL & 2232' FEL

SHIDELER FEE 6-3AA (031E)
528' FNL & 2492' FEL

SURVEYED BY: C.D.S.	DATE SURVEYED: 11-13-10
DRAWN BY: M.W.	DATE DRAWN: 11-22-11
SCALE: 1" = 100'	REVISED: M.W. 09-10-12

Tri State
Land Surveying, Inc.

(435) 781-2501

180 NORTH VERNAL AVE. VERNAL, UTAH 84078

EnCana OIL & GAS (USA) INC

DETAILED MULTI WELL PLAN WELL PAD INTERFERENCE PLAT WELL PAD (031E) EXPANSION Section 31, T7S, R92W, 6th P.M.

LATITUDE & LONGITUDE Surface position of Wells (NAD 83)

WELL	LATITUDE	LONGITUDE
31-9D	39.397023°	107.705633°
31-16A	39.396993°	107.705640°
31-16AA	39.397000°	107.705677°
31-16DD	39.396971°	107.705684°
31-10C	39.396978°	107.705722°
31-16D	39.396948°	107.705728°
31-11C	39.396955°	107.705766°
6-1A	39.396926°	107.705773°
31-12B	39.396933°	107.705811°
6-1AA	39.396903°	107.705817°
31-14D	39.396910°	107.705855°
6-1D	39.396881°	107.705862°
31-13B	39.396888°	107.705899°
6-1DD	39.396858°	107.705906°
31-13BB	39.396865°	107.705944°
6-8A	39.396836°	107.705951°
31-14DD	39.396843°	107.705988°
6-8AA	39.396813°	107.705995°
6-8D	39.396791°	107.706039°
31-13C	39.396357°	107.706118°
6-7D	39.396328°	107.706125°
6-11A	39.396335°	107.706163°
6-6D	39.396305°	107.706169°
31-13CC	39.396312°	107.706207°
6-6A	39.396283°	107.706214°
6-3D	39.396290°	107.706252°
6-3DD	39.396260°	107.706258°
6-3A	39.396267°	107.706296°
6-3AA	39.396238°	107.706303°

LATITUDE & LONGITUDE Bottom hole position of Wells (NAD 83)

WELL	LATITUDE	LONGITUDE
31-9D	39.400083°	107.700233°
31-16A	39.398473°	107.700151°
31-16AA	39.399326°	107.700140°
31-16DD	39.397347°	107.700247°
31-10C	39.400948°	107.706210°
31-16D	39.396487°	107.700019°
31-11C	39.400260°	107.708830°
6-1A	39.395653°	107.699997°
31-12B	39.401763°	107.712985°
6-1AA	39.394939°	107.699874°
31-14D	39.397230°	107.706908°
6-1D	39.393553°	107.699905°
31-13B	39.399107°	107.713773°
6-1DD	39.392790°	107.699932°
31-13BB	39.398003°	107.713842°
6-8A	39.392093°	107.699933°
31-14DD	39.396446°	107.706815°
6-8AA	39.390782°	107.699986°
6-8D	39.390057°	107.700093°
31-13C	39.397216°	107.713813°
6-7D	39.389273°	107.703888°
6-11A	39.388947°	107.708293°
6-6D	39.390121°	107.707493°
31-13CC	39.396431°	107.713586°
6-6A	39.390956°	107.707745°
6-3D	39.393609°	107.707812°
6-3DD	39.392880°	107.707842°
6-3A	39.395670°	107.707259°
6-3AA	39.394317°	107.708182°

SURVEYED BY: C.D.S.	DATE SURVEYED: 11-13-10
DRAWN BY: M.W.	DATE DRAWN: 11-22-11
SCALE: 1" = 100'	REVISED: M.W. - 08-29-12

Tri State (435) 781-2501
Land Surveying, Inc.
 180 NORTH VERNAL AVE. VERNAL, UTAH 84078