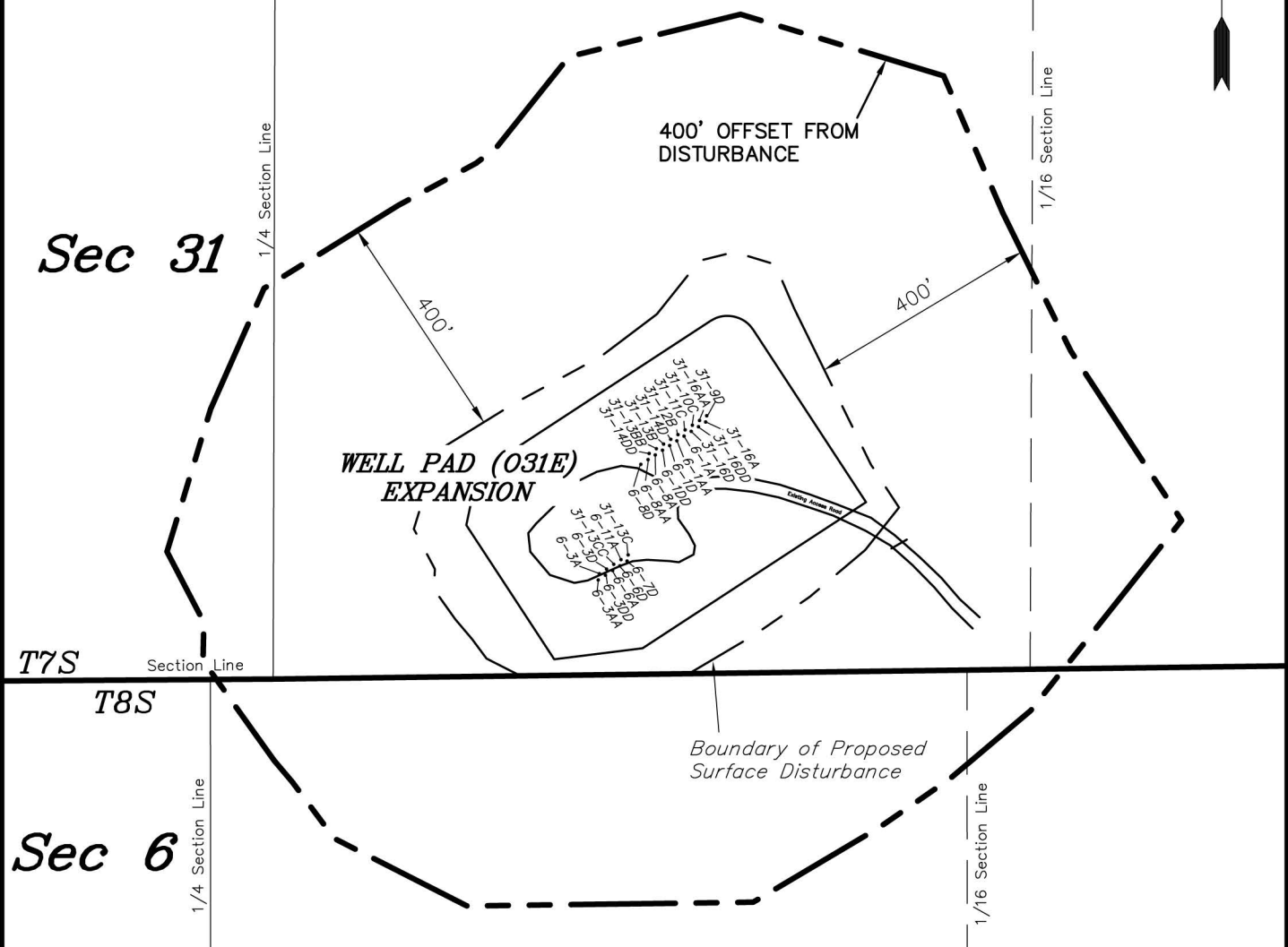


# ENCANA OIL & GAS (USA) INC

## SURFACE DISTURBANCE AREA WELL PAD (031E) EXPANSION Section 31, T7S, R92W, 6th P.M.



*Distances from Well Heads*

WELL	BUILDING	ABOVE GROUND UTILITY	PUBLIC ROAD	RAILROAD
31-9D	6,603'	6,603'	1,778'	9.76 MILES
31-16A	6,614'	6,614'	1,779'	9.76 MILES
31-16AA	6,609'	6,609'	1,768'	9.76 MILES
31-16DD	6,609'	6,609'	1,768'	9.76 MILES
31-10C	6,615'	6,615'	1,757'	9.76 MILES
31-16D	6,626'	6,626'	1,758'	9.76 MILES
31-11C	6,621'	6,621'	1,747'	9.76 MILES
6-1A	6,632'	6,632'	1,747'	9.76 MILES
31-12B	6,627'	6,627'	1,736'	9.76 MILES
6-1AA	6,638'	6,638'	1,737'	9.76 MILES
31-14D	6,633'	6,633'	1,726'	9.76 MILES
6-1D	6,644'	6,644'	1,727'	9.76 MILES
31-13B	6,640'	6,640'	1,716'	9.76 MILES
6-1DD	6,650'	6,650'	1,716'	9.76 MILES
31-13BB	6,646'	6,646'	1,706'	9.76 MILES

*Distances from Well Heads*

WELL	BUILDING	ABOVE GROUND UTILITY	PUBLIC ROAD	RAILROAD
6-8A	6,656'	6,656'	1,706'	9.76 MILES
31-14DD	6,652'	6,652'	1,695'	9.76 MILES
6-8AA	6,662'	6,662'	1,696'	9.76 MILES
6-8D	6,668'	6,668'	1,686'	9.76 MILES
31-13C	6,821'	6,821'	1,714'	9.76 MILES
6-7D	6,832'	6,832'	1,713'	9.76 MILES
6-11A	6,828'	6,828'	1,706'	9.76 MILES
6-6D	6,838'	6,838'	1,708'	9.76 MILES
31-13CC	6,834'	6,834'	1,697'	9.76 MILES
6-6A	6,844'	6,844'	1,699'	9.76 MILES
6-3D	6,840'	6,840'	1,688'	9.76 MILES
6-3DD	6,851'	6,851'	1,691'	9.76 MILES
6-3A	6,847'	6,847'	1,680'	9.76 MILES
6-3AA	6,857'	6,857'	1,682'	9.76 MILES

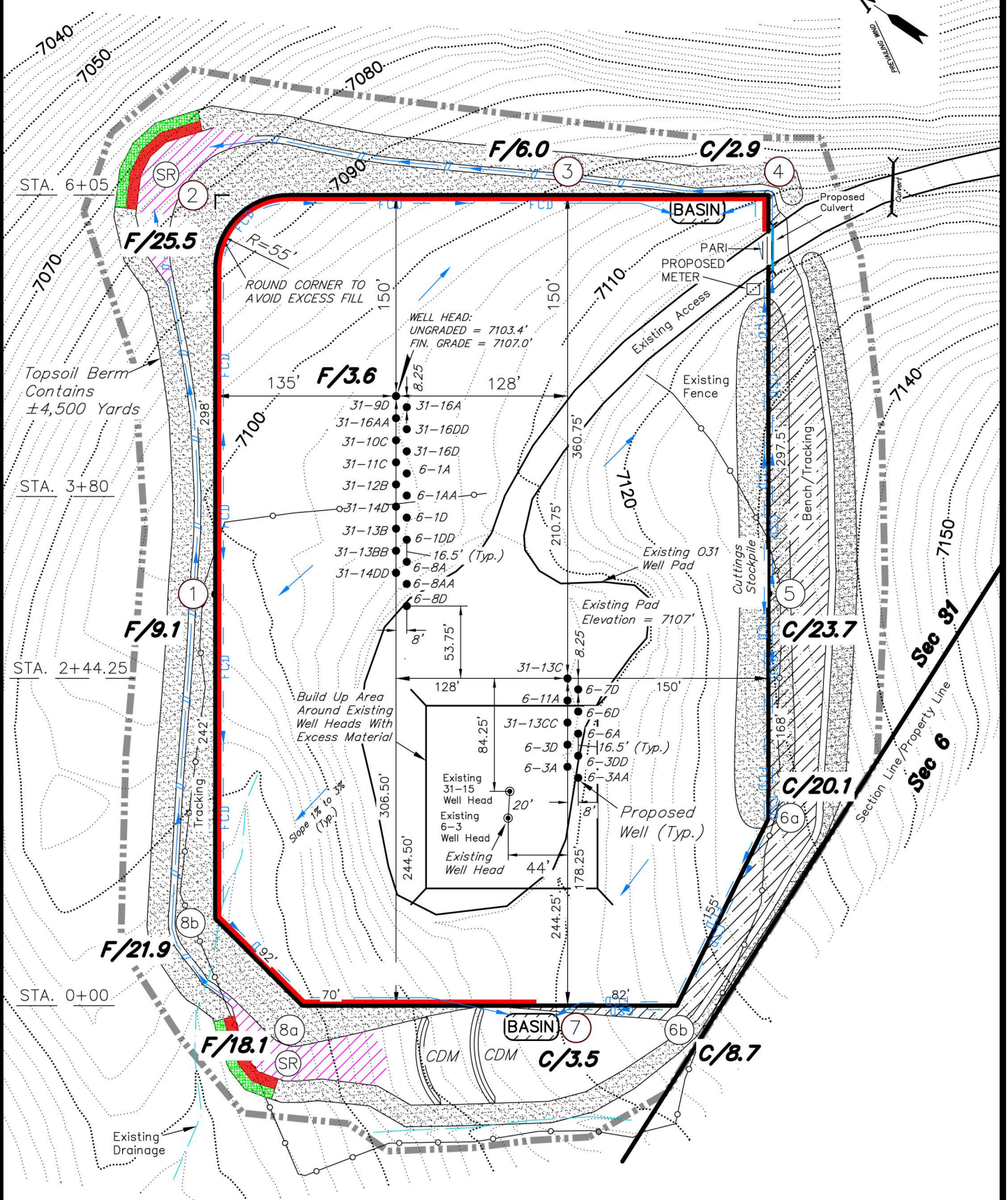
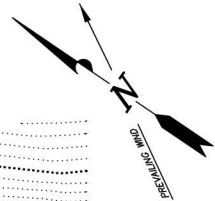
SURVEYED BY: C.D.S.    DATE SURVEYED: 11-13-10  
 DRAWN BY: M.W.    DATE DRAWN: 11-22-11  
 SCALE: 1" = 300'    REVISED: M.W. 09-10-12

**Tri State** (435) 781-2501  
*Land Surveying, Inc.*  
 180 NORTH VERNAL AVE. VERNAL, UTAH 84078

**SHEET**  
**31**  
**37**

# ENCANA OIL & GAS (USA) INC

## PRLIMINARY CUT SHEET WELL PAD (031E) EXPANSION Section 31, T7S, R92W, 6th P.M.



NOTE:  
The topsoil & waste material area is calculated as being mounds containing 6,510 cubic yards of dirt (a 15% fluff factor is included). The mound areas are calculated with push slopes of 2.5:1 & fall slopes of 2.5:1.

- NOTES:**
- (1) Slope Track and/or Terrace All Slopes and Piles
  - (2) Erosion Control & Seed Topsoil Stockpile
  - (3) Erosion Control & Seed Outside Slopes of Stockpiles
  - (4) Slope away from Substructure Areas 1% to 3% to Flow Control Ditch on Entire Pad
  - (5) When Possible the Cut and Fill Slopes Directly Behind the Proposed Production Equipment Should be Reclaimed with 3:1 Slopes and Topsoil Spread During Pad Construction.
  - (6) BMP Selection and Position may Change Depending on Actual Conditions Encountered During the Construction Process.
  - (7) All CMP's Shall have Inlet and Outlet Protection.
  - (8) All BMP's to be constructed to EnCana Oil & Gas (USA) Inc. BMP Manual's Specifications.

- LEGEND:**
- PARI = PAD/ACCESS ROAD INTERFACE
  - SR = SEDIMENT RESERVOIR
  - ST = SEDIMENT TRAP
  - R.O.P. = RUN-ON PROTECTION
  - = PERIMETER CONTROL (WATTLES)
  - CDM = CHECK DAM
  - FCD = FLOW CONTROL DITCH
  - ECB = EROSION CONTROL BLANKET
  - D = FILL DIVERSION TO SEDIMENT TRAP
  - CSD = CUT SLOPE DIVERSION (BERM TOE OF CUT SLOPE)
  - VGB = VEGETATION BUFFER (UNDISTURBED LAND INSIDE PC)
  - = SEED, ECB & FLEX
  - = LEVEL SPREADER

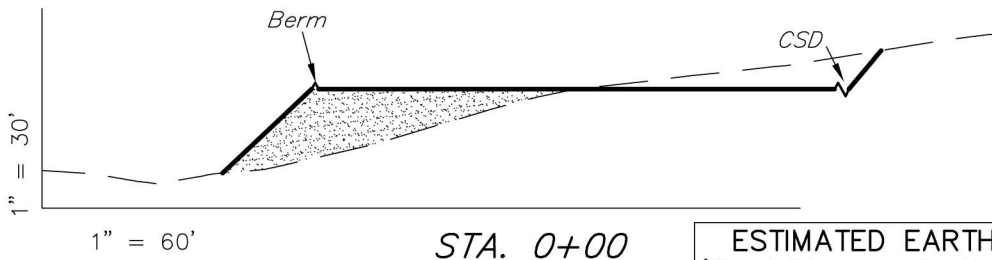
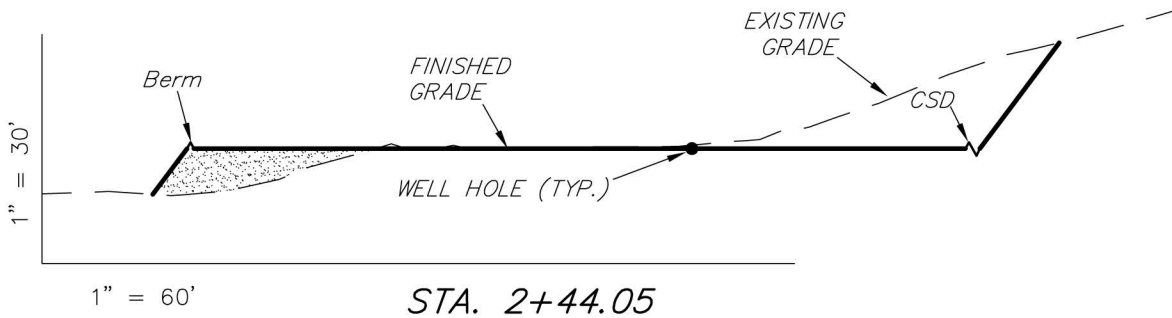
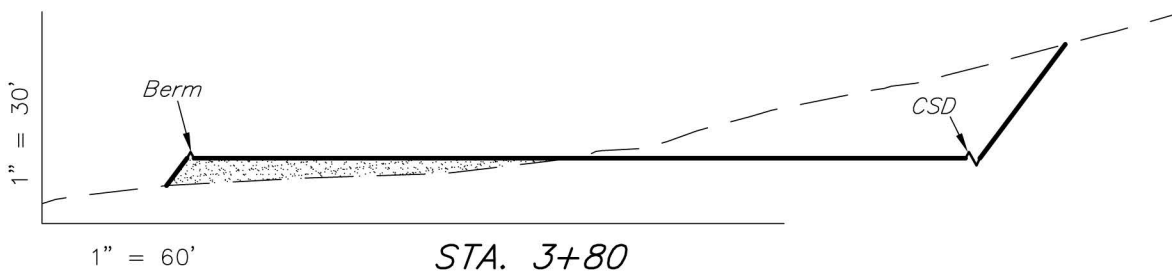
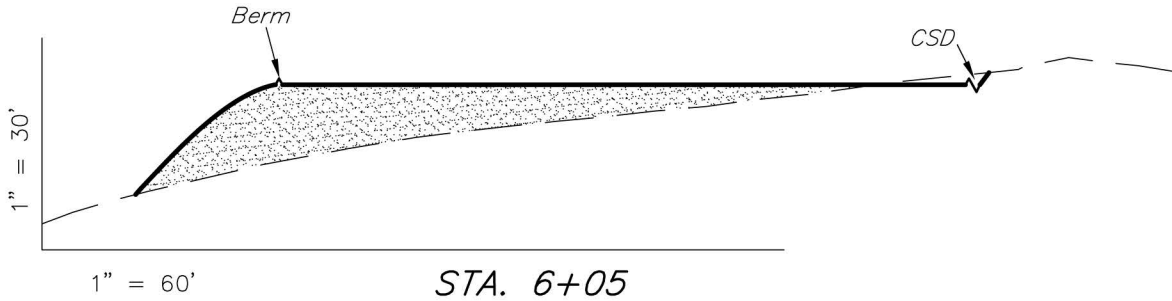
SURVEYED BY: C.D.S.	DATE SURVEYED: 11-13-10
DRAWN BY: M.W.	DATE DRAWN: 11-16-11
SCALE: 1" = 100'	REVISED: M.W. 09-10-12

**Tri State** (435) 781-2501  
*Land Surveying, Inc.*  
 180 NORTH VERNAL AVE. VERNAL, UTAH 84078

# ENCANA OIL & GAS (USA) INC

## CROSS SECTIONS

### WELL PAD (031E) EXPANSION Section 31, T7S, R92W, 6th P.M.



ESTIMATED EARTHWORK QUANTITIES (No Shrink or swell adjustments have been used) (Expressed in Cubic Yards)				
ITEM	CUT	FILL	6" TOPSOIL	EXCESS
PAD	37,230	36,070	Topsoil is not included in Pad Cut	1,160
PIT	0	0		0
TOTALS	37,230	36,070	4,500	1,160

NOTE:  
UNLESS OTHERWISE NOTED  
CUT SLOPES ARE AT 1:1  
FILL SLOPES ARE AT 1.5:1

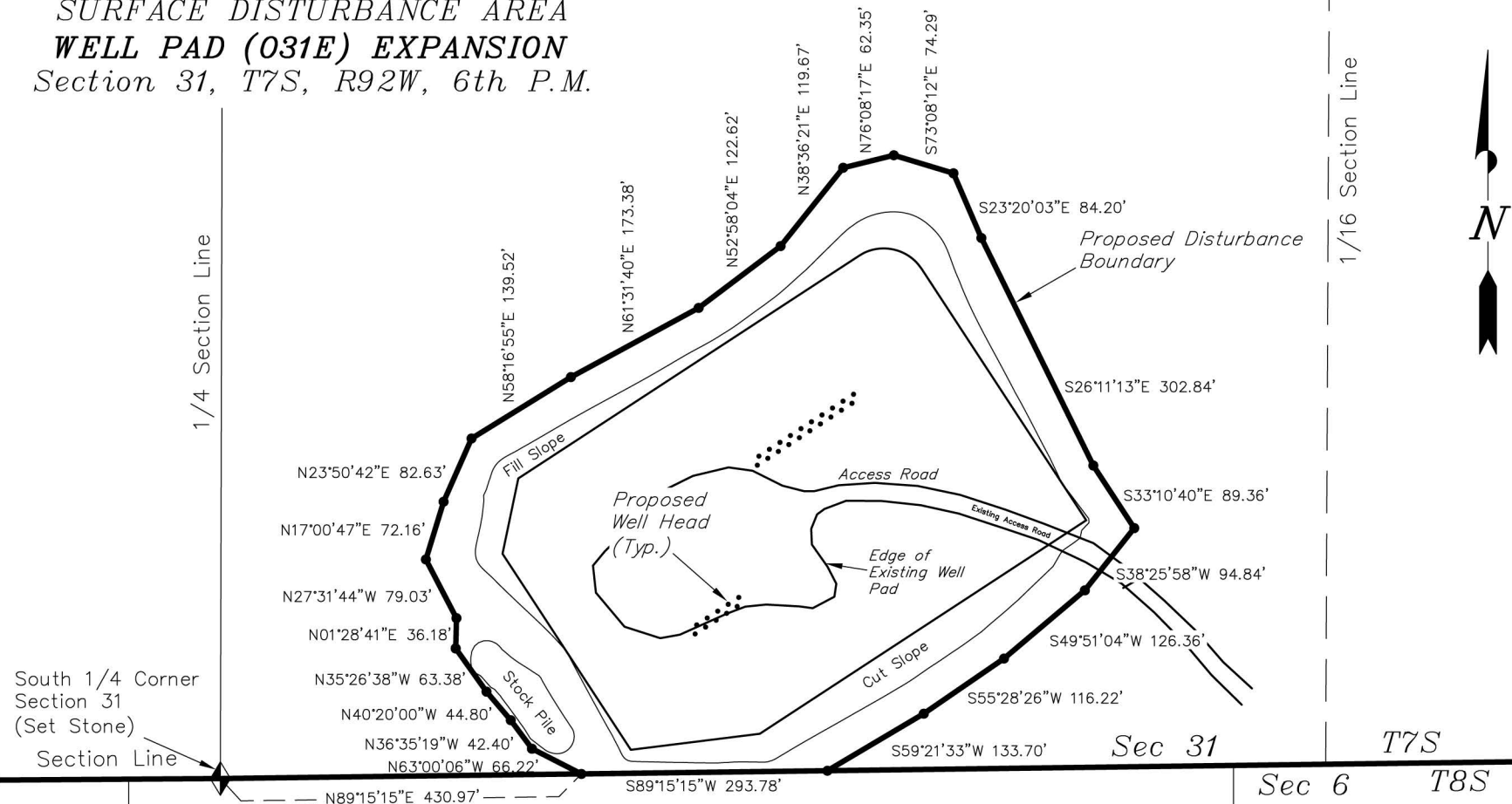
SURVEYED BY: C.D.S.	DATE SURVEYED: 11-13-10
DRAWN BY: M.W.	DATE DRAWN: 11-23-11
SCALE: 1" = 100'	REVISED: M.W. 09-10-12

**Tri State** (435) 781-2501  
Land Surveying, Inc.  
180 NORTH VERNAL AVE. VERNAL, UTAH 84078

SHEET  
**34**  
OF 37

# ENCANA OIL & GAS (USA) INC

*SURFACE DISTURBANCE AREA  
WELL PAD (031E) EXPANSION  
Section 31, T7S, R92W, 6th P.M.*



<i>Surface Disturbance Area</i>			
SECTION	PROPOSED	EXISTING	TOTAL
SECTION 31	7.98 Acres	1.10 Acres	9.08 Acres

SURVEYED BY:	C.D.S.	DATE SURVEYED:	11-13-10
DRAWN BY:	M.W.	DATE DRAWN:	11-22-11
SCALE:	1" = 200'	REVISED:	M.W. 09-10-12

**Tri State** Land Surveying, Inc. (435) 781-2501  
180 NORTH VERNAL AVE. VERNAL, UTAH 84078

SHEET 37 OF 37