

EnCana Oil & Gas Inc.

**Well Pad (O31E) Expansion
SEC. 31, T7S, R92W, 6th P.M.**

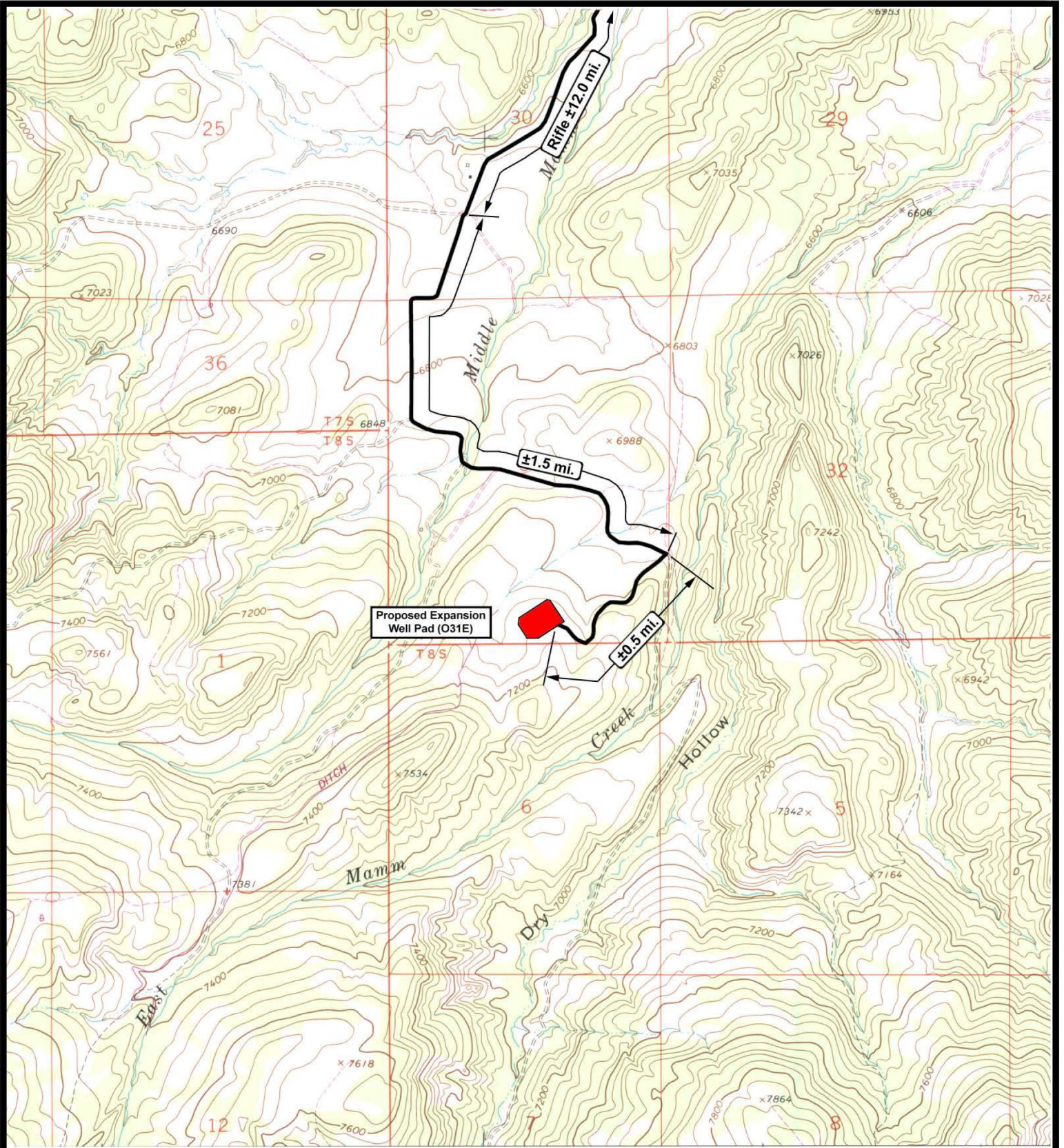


**Tri-State
Land Surveying Inc.**
(435) 781-2501
180 North Vernal Ave. Vernal, Utah 84078

SCALE: 1" = 100,000
DRAWN BY: J.A.S.
DATE: 09-10-2012

Legend
Existing Road
Proposed Access

TOPOGRAPHIC MAP SHEET
"A" M1 OF 3



EnCana Oil & Gas Inc.

**Well Pad (O31E) Expansion
SEC. 31, T7S, R92W, 6th P.M.**



**Tri-State
Land Surveying Inc.**
(435) 781-2501
180 North Vernal Ave. Vernal, Utah 84078

SCALE: 1" = 2000'
DRAWN BY: J.A.S.
DATE: 09-10-2012

Legend

- Existing Road
- Proposed Access

TOPOGRAPHIC MAP SHEET
"B" M2
OF 3