

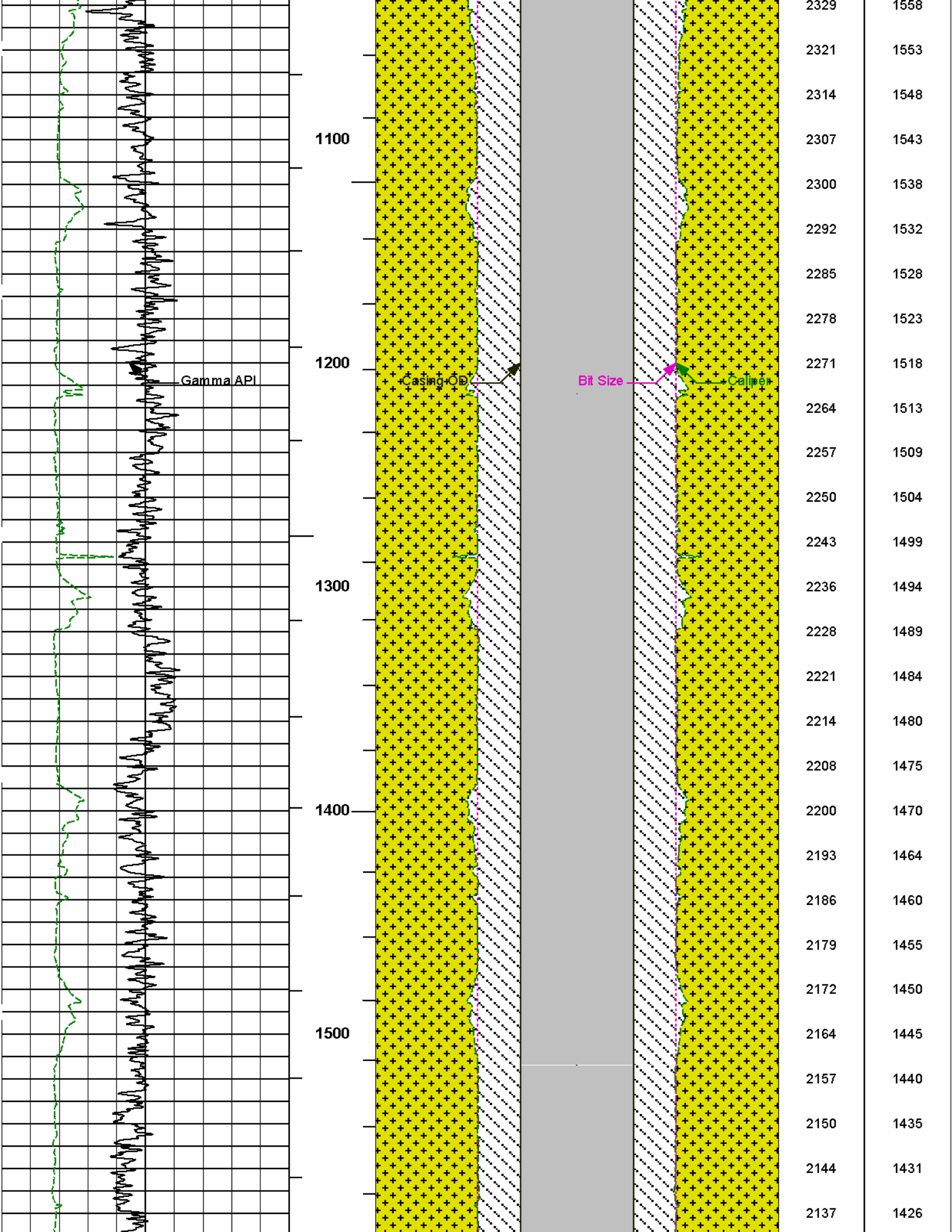
COMPANY				KERR-MCGEE OIL & GAS ONSHORE LP			
WELL				HEIN 1-1			
FIELD				WATTENBERG			
COUNTY				WELD			
STATE				CO			
Permanent Datum				GL	Elev. 4896.0 ft		
Log measured from				KB	15.0 ft above perm. Datum		
Drilling measured from				KB	G.L. 4896.0 ft		
Date				23-Apr-12			
Run No.				ONE			
Depth - Driller				8028.00 ft			
Depth - Logger				8006.0 ft			
Bottom - Logged Interval				7983 ft			
Top - Logged Interval				CASING			
Casing - Driller				8.625 in @ 924.0 ft	@		
Casing - Logger				924.0 ft			
Bit Size				7.875 in	@		
Type Fluid in Hole				WATER BASED MUD			
Density				8.8 ppq	26.00	s/qt	
PH				8.00 pH	0.0	cpm	
Source of Sample				MUD CELL			
Rm @ Meas. Temperature				0.560 ohmm @ 105.16 degF	@		
Rmf @ Meas. Temperature				0.53 ohmm @ 75.00 degF	@		
Rmc @ Meas. Temperature				0.964 ohmm @ 75.00 degF	@		
Source Rmf				CHART	CHART		
Rm @ BHT				0.26 ohmm @ 232.0 degF	@		
Time Since Circulation				4.0 hr			
Time on Bottom				23-Apr-12 16:03			
Max. Rec. Temperature				232.0 degF @ 8006.0 ft	@		
Equipment				11454566	BRIGHTON		
Recorded By				J. PINKETT	A. ZWALL		
Witnessed By				B. BENJAMIN	R. BRACKMAN		

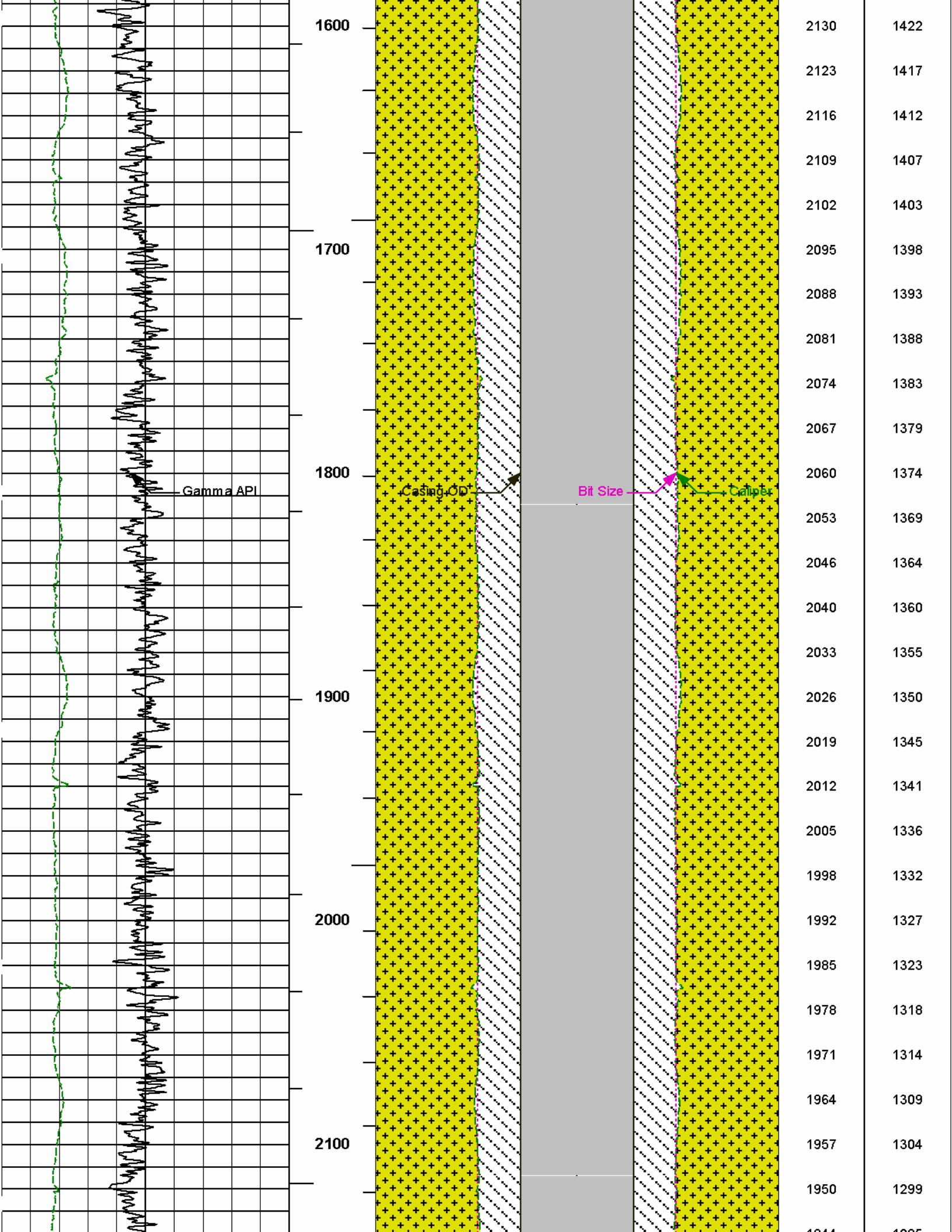
API No. 05123350680000
Location SHL 1956' FNL & 1857' FEL SWNE
BHL 526' FNL & 531' FEL NENE ESTIMATED
LAT: 40.082061°
LONG: -104.836625°
Other Services:
RWCH
GTET
DSNT
SDLT
ACRT

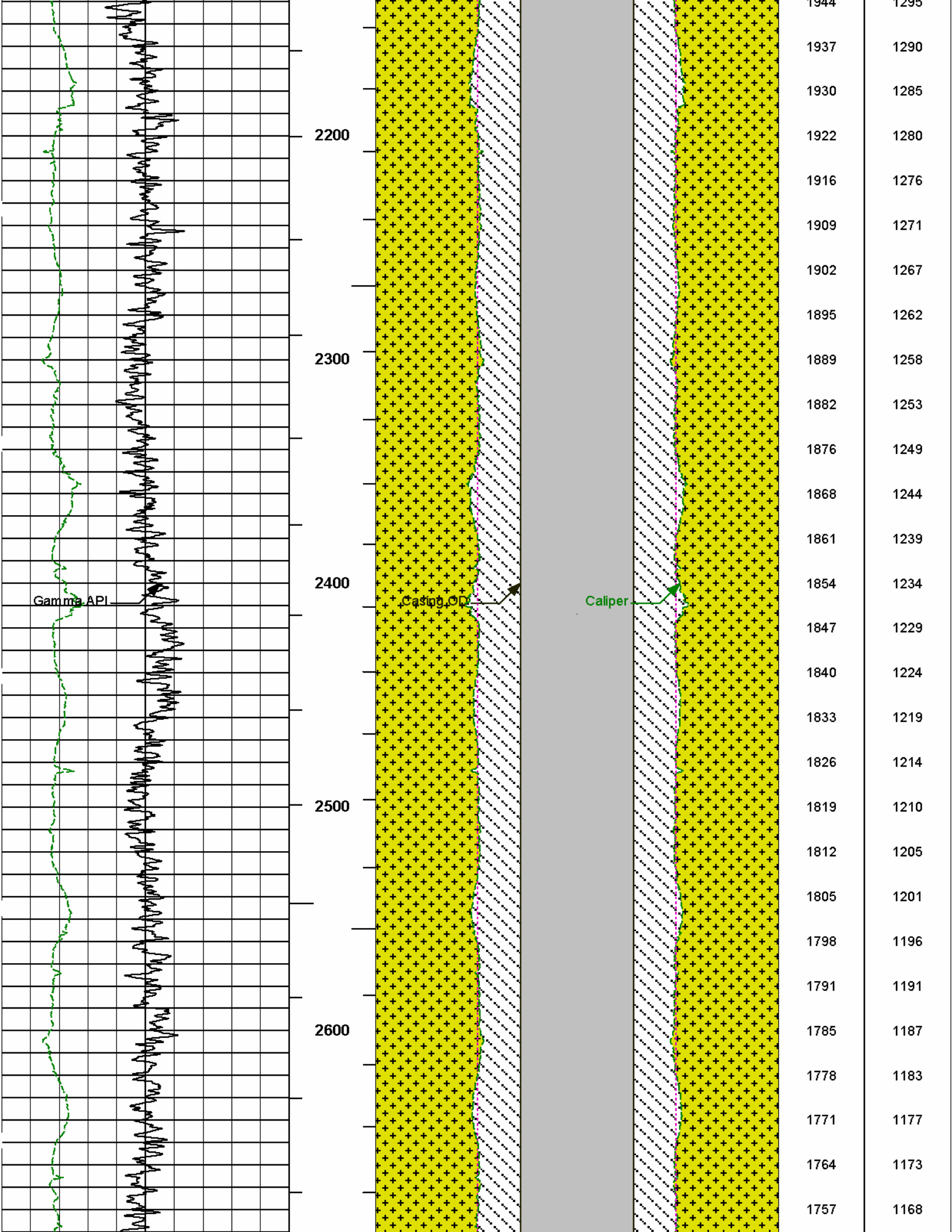
Fold here

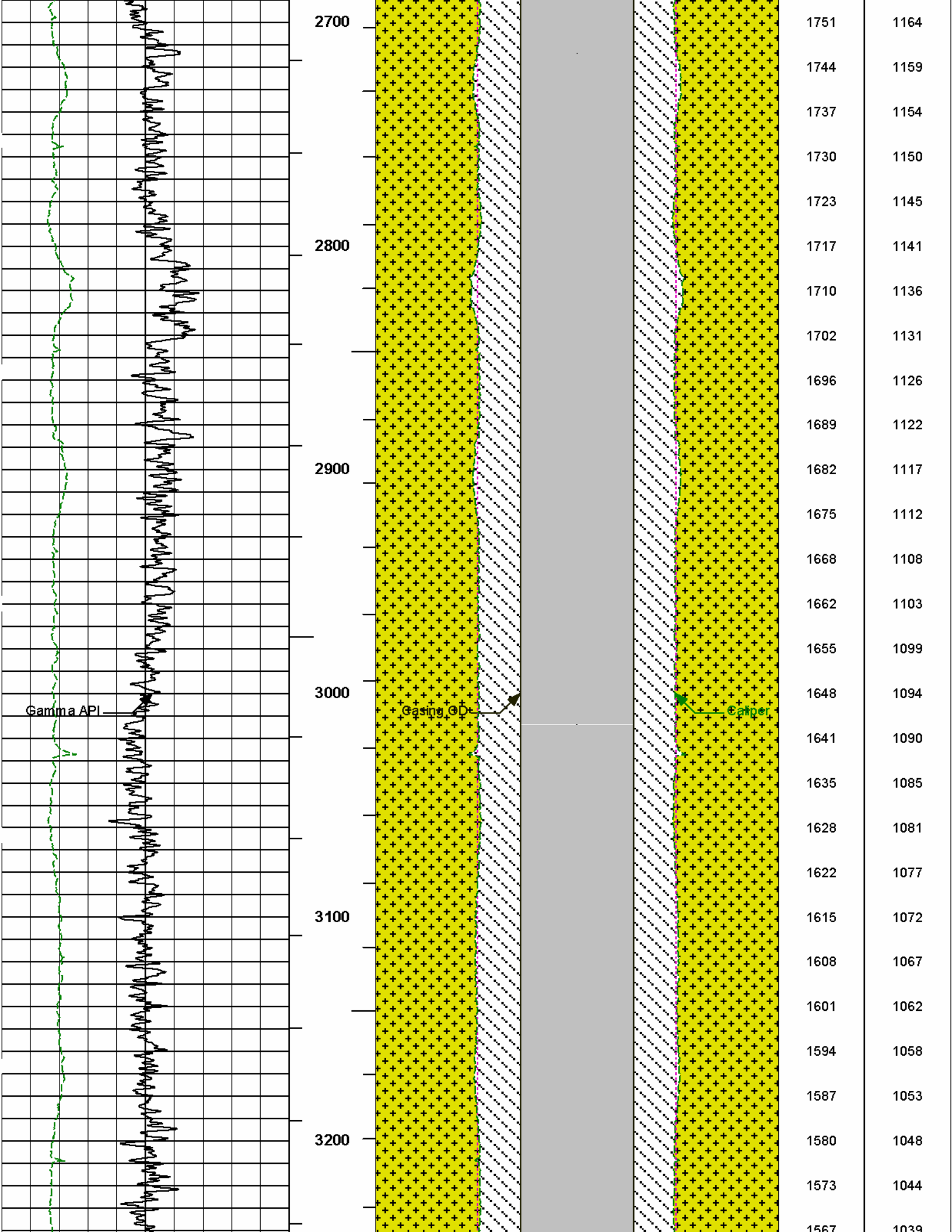
Service Ticket No.: N/A						API Serial No.: 05123350680000						PGM Version: WL INSITE R3.4.4 (Build 2)											
CHANGE IN MUD TYPE OR ADDITIONAL SAMPLE												RESISTIVITY SCALE CHANGES											
Date		Sample No.										Type Log		Depth		Scale Up Hole		Scale Down Hole					
Depth-Driller																							
Type Fluid in Hole																							
Density		Viscosity																					
Ph		Fluid Loss																					
Source of Sample												RESISTIVITY EQUIPMENT DATA											
Rm @ Meas. Temp				@		@				Run No.		Tool Type & No.		Pad Type		Tool Pos.		Other					
Rmf @ Meas. Temp.				@		@				ONE		ACRT		N/A		1.25" S.O.		N/A					
Rmc @ Meas. Temp.				@		@						E2584-S2585											
Source Rmf		Rmc																					
Rm @ BHT				@		@																	
Rmf @ BHT				@		@																	
Rmc @ BHT				@		@																	
EQUIPMENT DATA																							
GAMMA				ACOUSTIC				DENSITY				NEUTRON											
Run No.		ONE		Run No.				Run No.		ONE		Run No.		ONE									
Serial No.		11215095		Serial No.				Serial No.		M319_P123_BLUE		Serial No.		11277440									
Model No.		GTET		Model No.				Model No.		SDLT		Model No.		DSNT									
Diameter		3.625"		No. of Cent.				Diameter		4.5"		Diameter		3.625"									
Detector Model No.		GTET		Spacing				Log Type		GAM/GAM		Log Type		NEU/NEU									
Type		SCINT						Source Type		Cs 137		Source Type		Am241Be									
Length		8"		LSA [Y/N]				Serial No.		5256GW		Serial No.		DSN-430									
Distance to Source		10'		FWDA [Y/N]				Strength		1.5 Ci		Strength		15 Ci									
LOGGING DATA																							

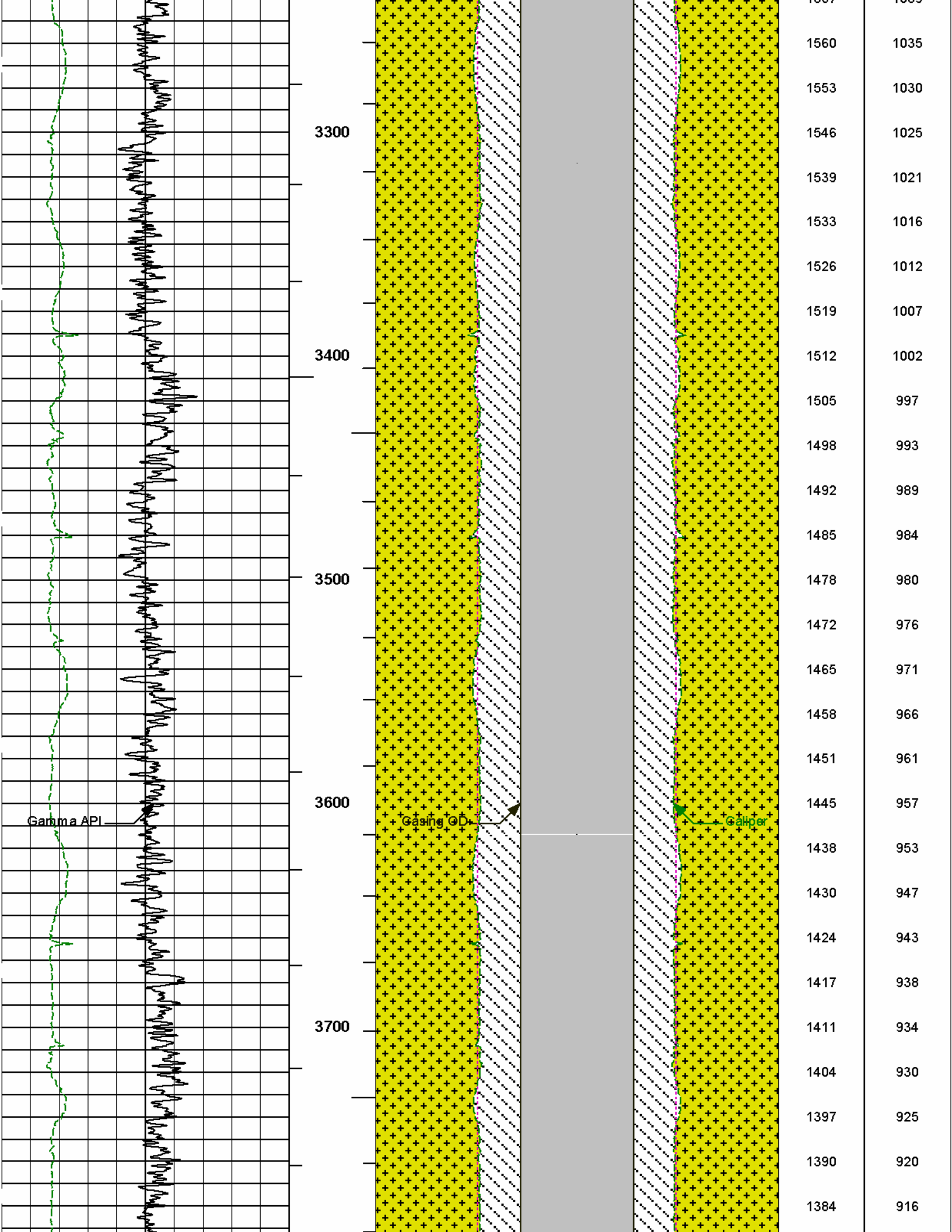
GENERAL			GAMMA		ACOUSTIC		DENSITY		NEUTRON						
Run	Depth		Speed	Scale		Scale		Matrix	Scale		Matrix				
No.	From	To	ft/min	L	R	L	R		L	R					
ONE	8006	CSG	REC	0	200				20	0	2.71	20	0	LIME	
DIRECTIONAL INFORMATION															
Maximum Deviation								@	KOP						
Remarks: RWCH/GTET/DSNT/SDLT/ACRT RAN IN COMBINATION															
TENSION PULLS, WASHOUTS, AND BOREHOLE RUGOSITY CAN AFFECT TOOL RESPONSE															
ANNULAR HOLE VOLUME CALCULATED FOR 4.5-INCH CASING															
YOUR CREW: N. GOULD, R. PERSHALL, L. SMITH, F. VASQUEZ															
RIG: XTREME 11															
THANK YOU FOR CHOOSING HALLIBURTON ENERGY SERVICES - BRIGHTON, CO- (303) 825-4346															
<p>HALLIBURTON DOES NOT GUARANTEE THE ACCURACY OF ANY INTERPRETATION OF THE LOG DATA, CONVERSION OF LOG DATA TO PHYSICAL ROCK PARAMETERS OR RECOMMENDATIONS WHICH MAY BE GIVEN BY HALLIBURTON PERSONNEL OR WHICH APPEAR ON THE LOG OR IN ANY OTHER FORM. ANY USER OF SUCH DATA, INTERPRETATIONS, CONVERSIONS, OR RECOMMENDATIONS AGREES THAT HALLIBURTON IS NOT RESPONSIBLE EXCEPT WHERE DUE TO GROSS NEGLIGENCE OR WILLFUL MISCONDUCT, FOR ANY LOSS, DAMAGES, OR EXPENSES RESULTING FROM THE USE THEREOF.</p>															
HALLIBURTON															

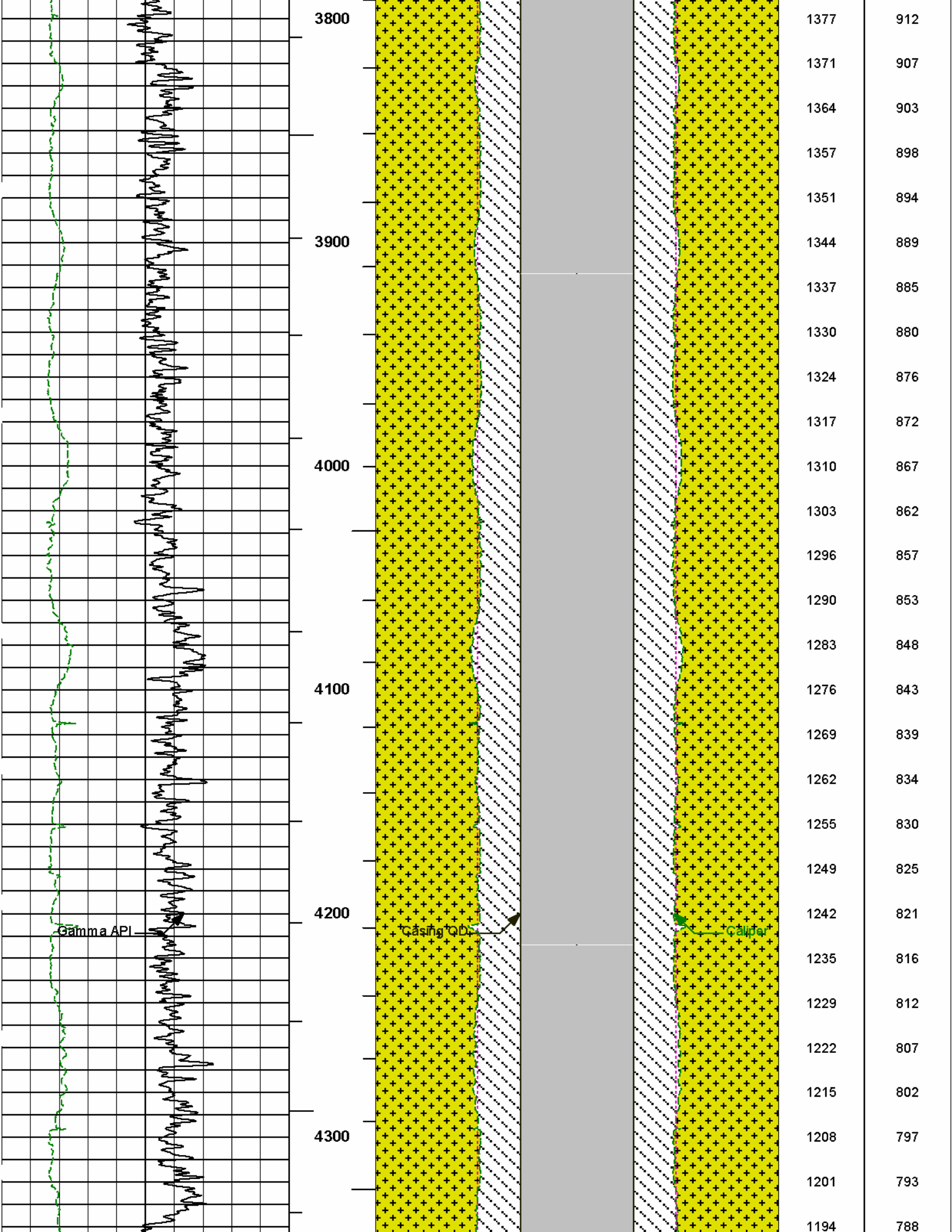


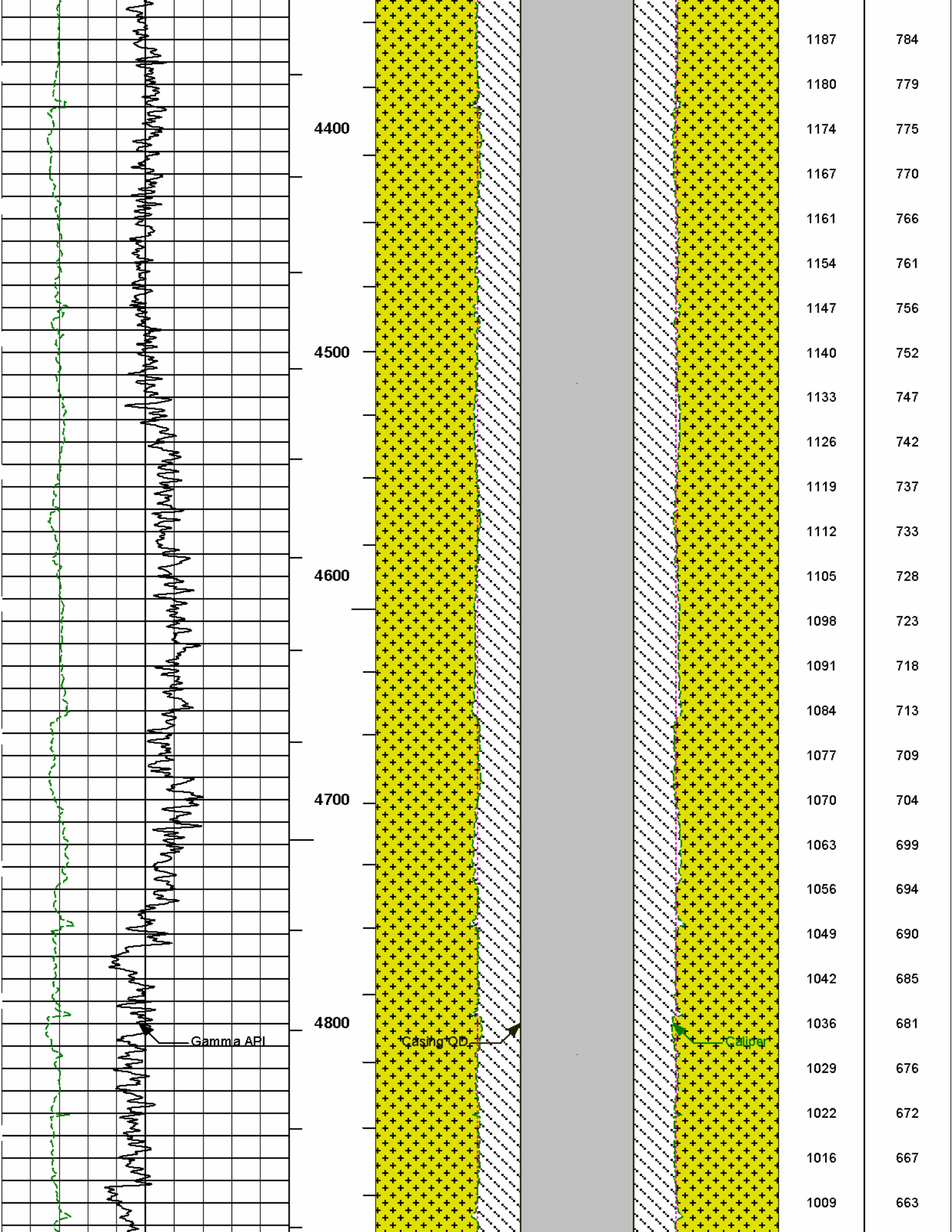


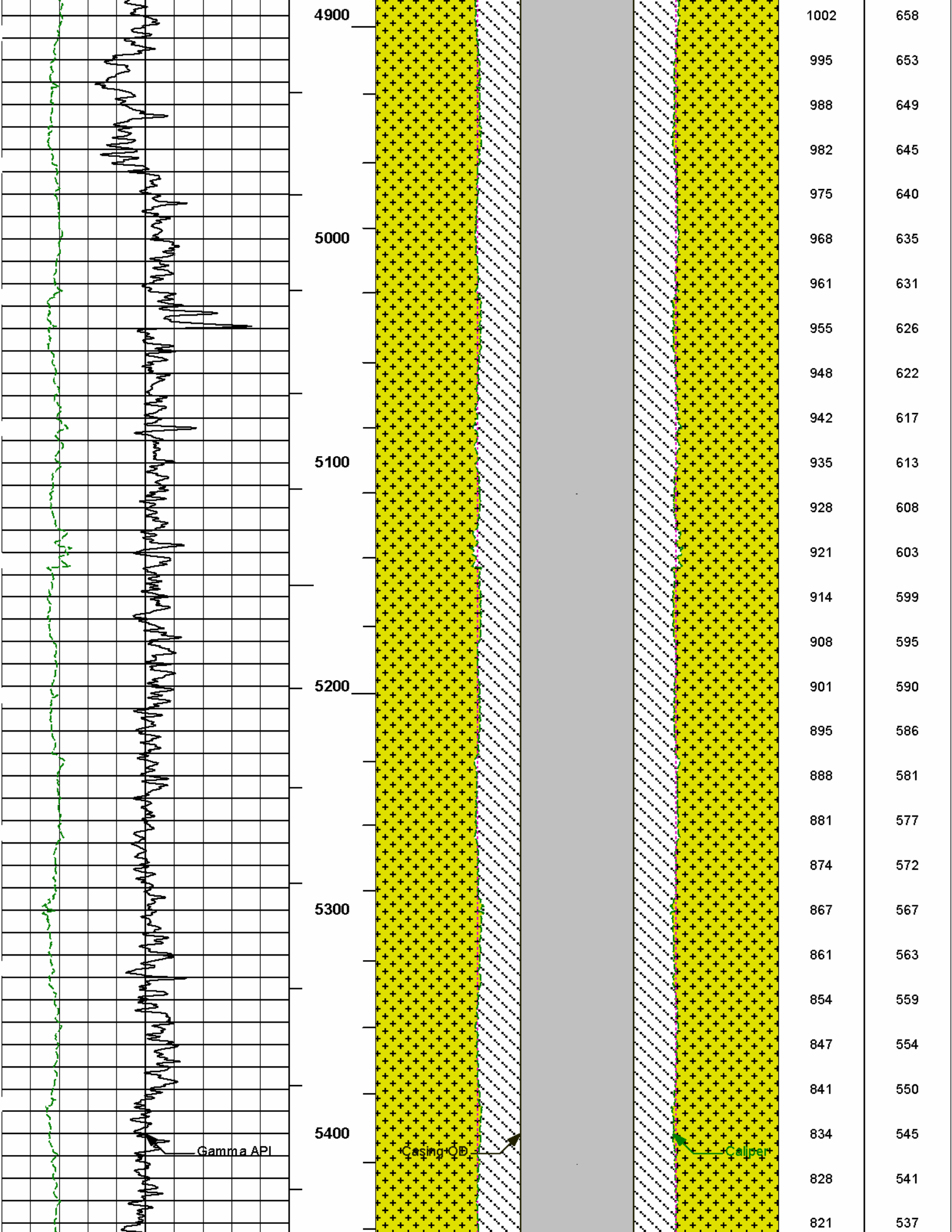


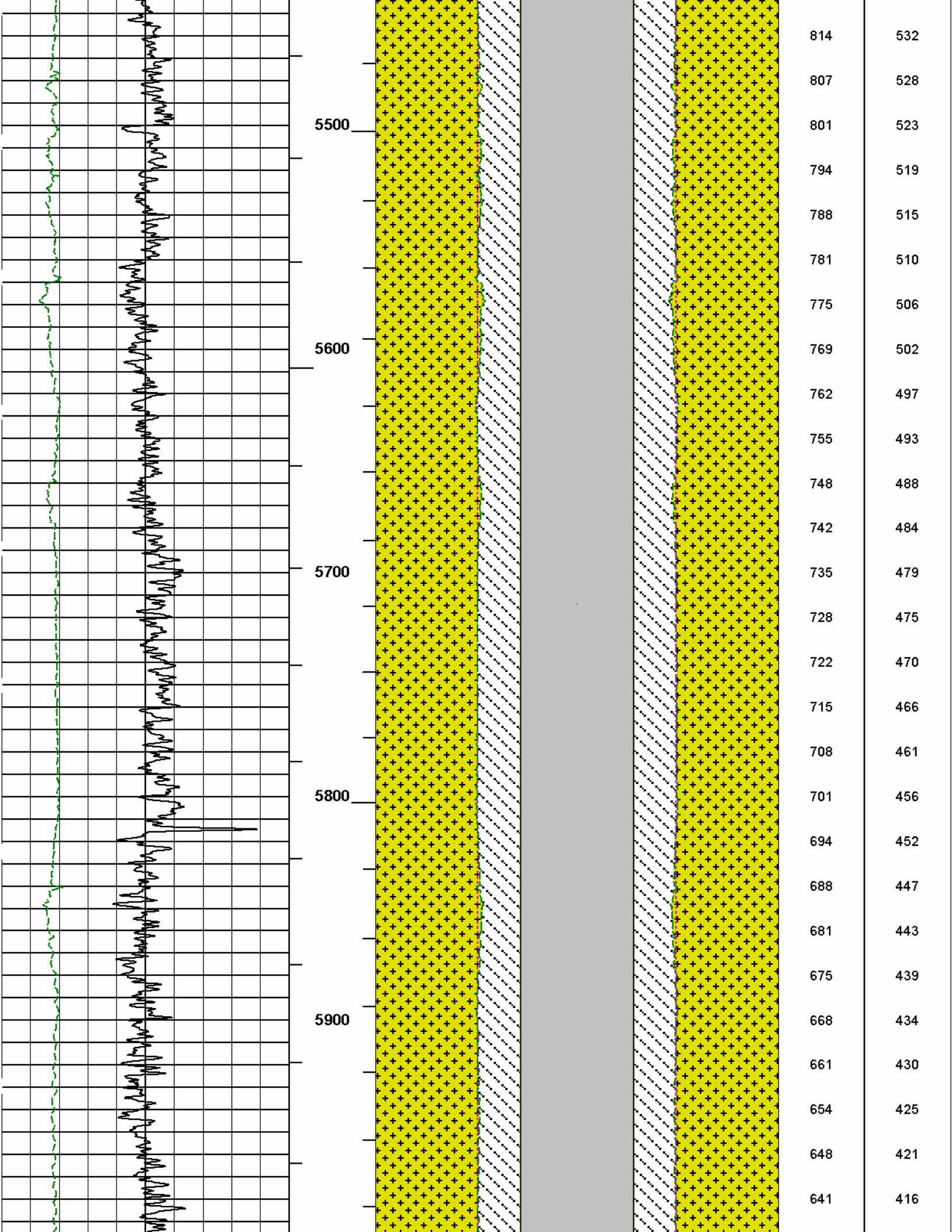


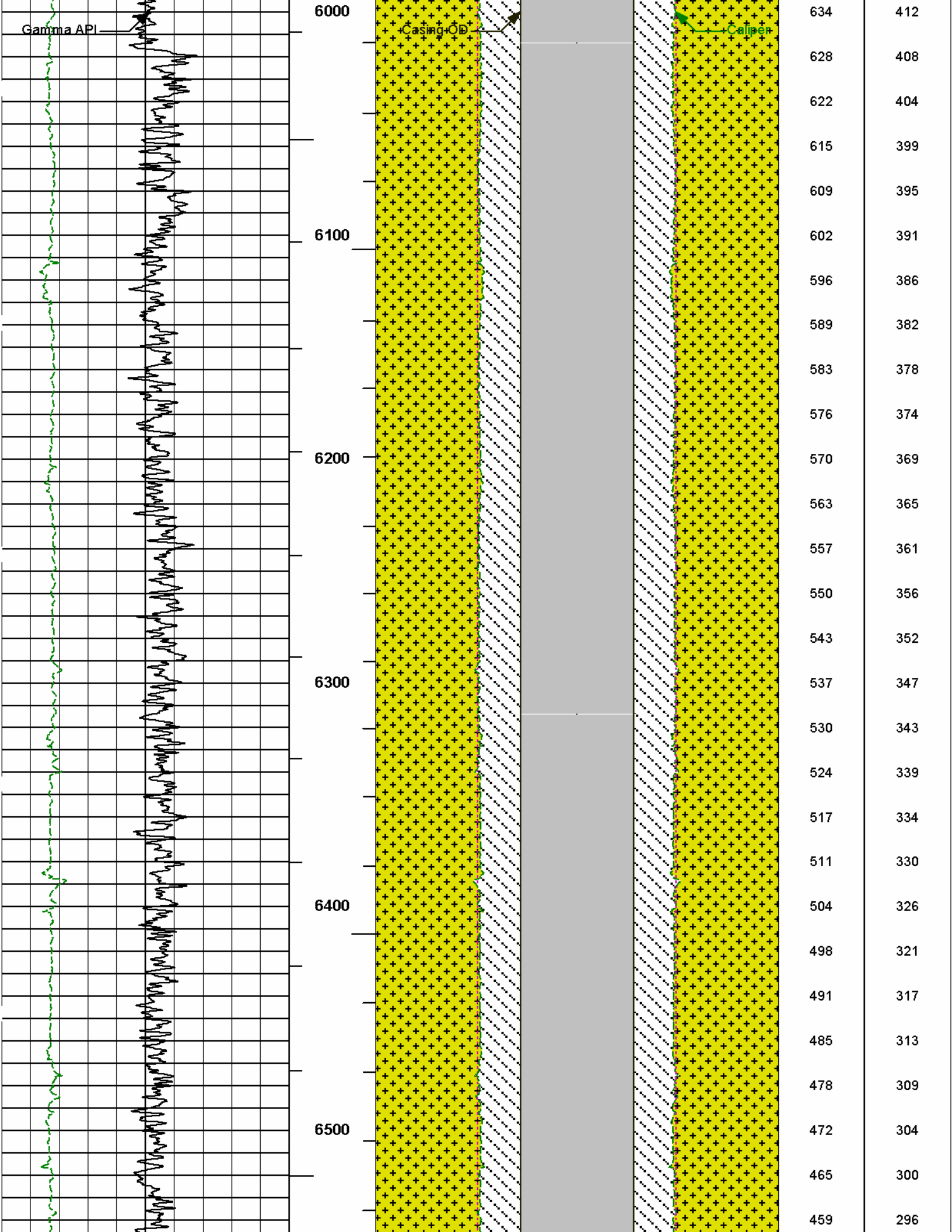


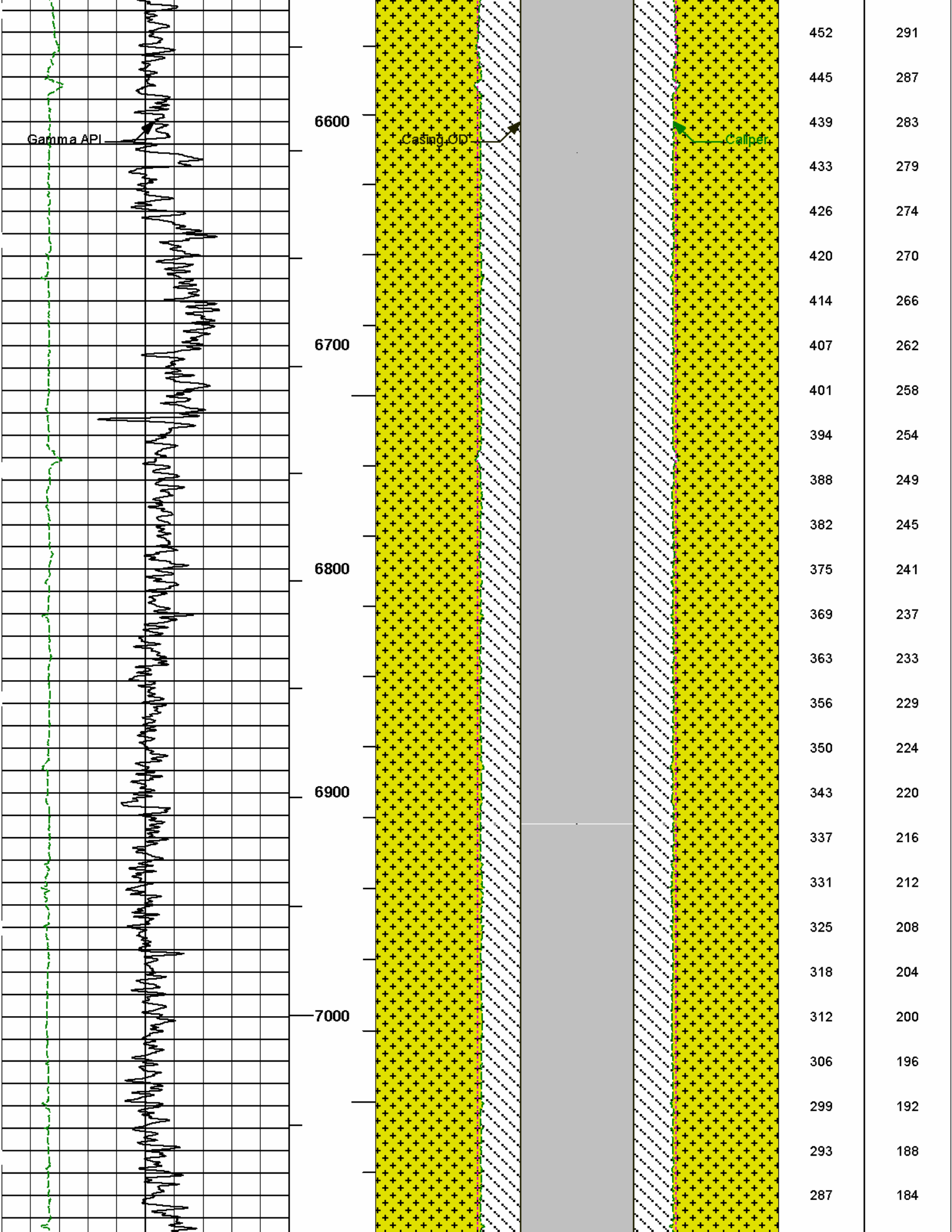


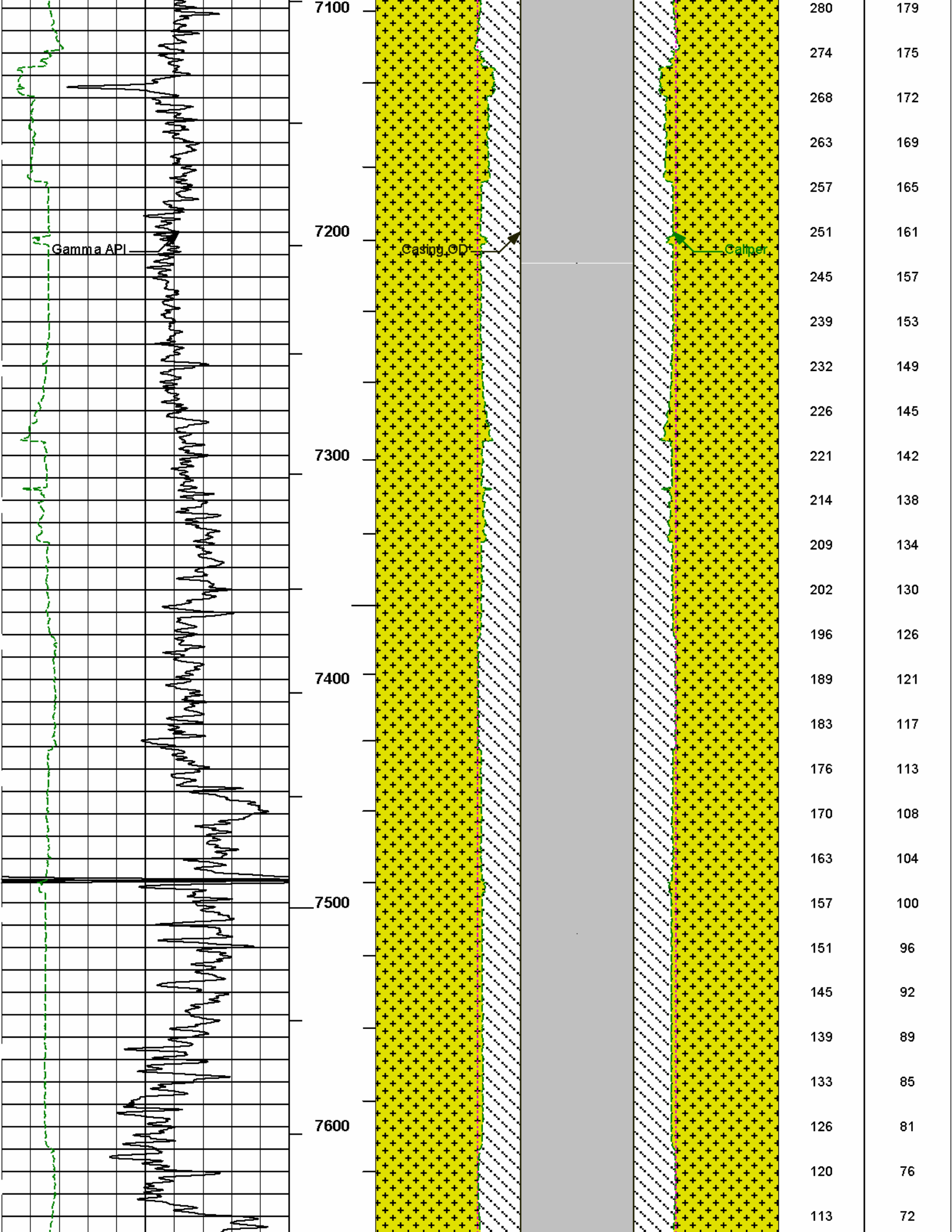


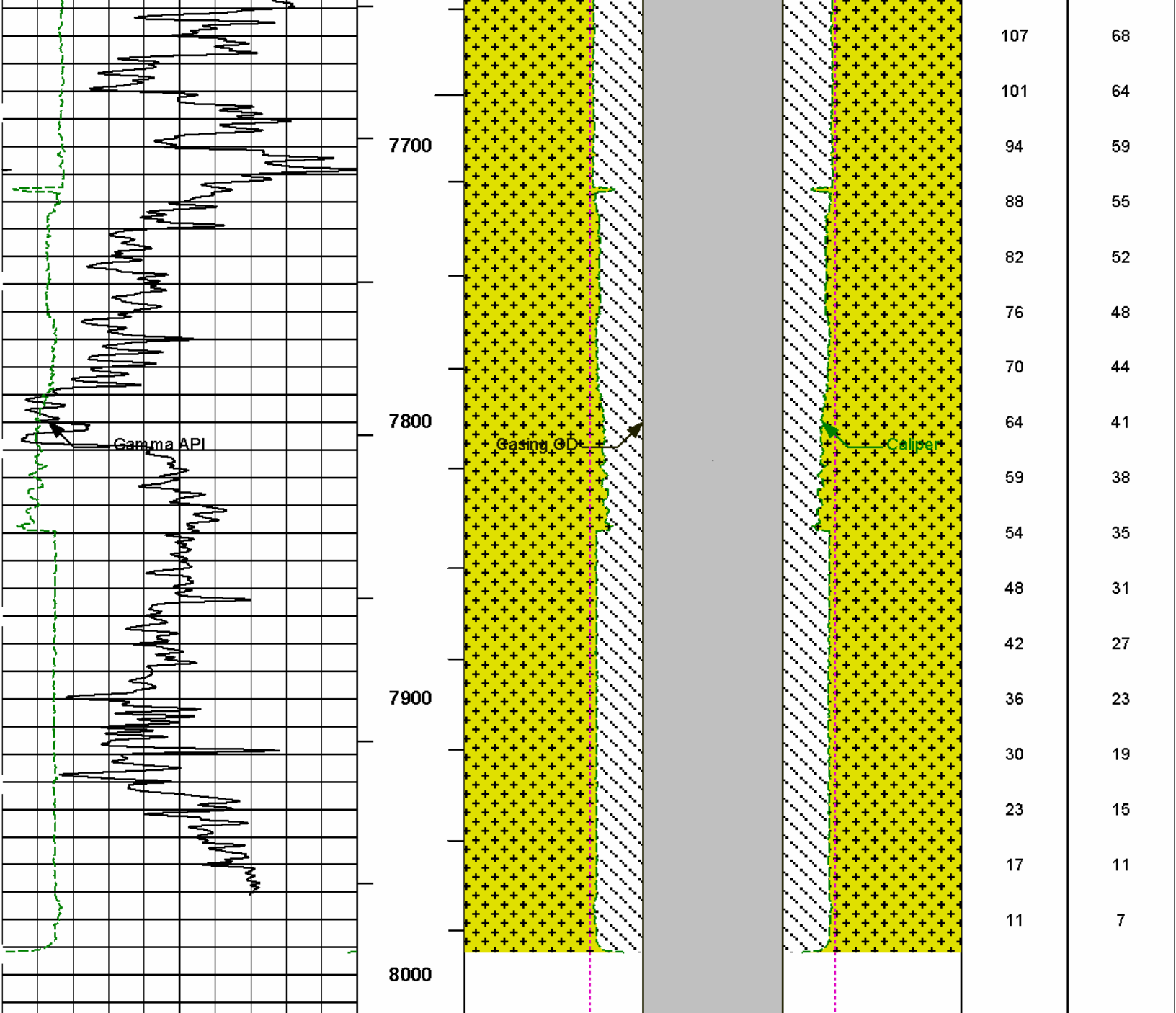












0	Gamma API	200	1 : 600	16	Caliper	0	0	Caliper	16	BHVT	AHVT
	api				inches			inches			
6	Caliper	16	BHVT		Casing OD			Casing OD			
	inches										
			AHVT	16	Bit Size	0	0	Bit Size	16		
					inches			inches			

HALLIBURTON

Plot Time: 23-Apr-12 18:19:35
 Plot Range: 914 ft to 8014.25 ft
 Data: HEIN 1-1 Well Based MAIN
 Plot File: \\BHWI\BHV_SDL_RM

AHV USES 4.5" CASING

COMPANY	KERR-MCGEE OIL & GAS ONSHORE LP		
WELL	HEIN 1-1		
FIELD	WATTENBERG		
COUNTY	WELD	STATE	CO

HALLIBURTON

BOREHOLE VOLUME PLOT