

I-FI EX logged through drillpipe set at 3000 feet

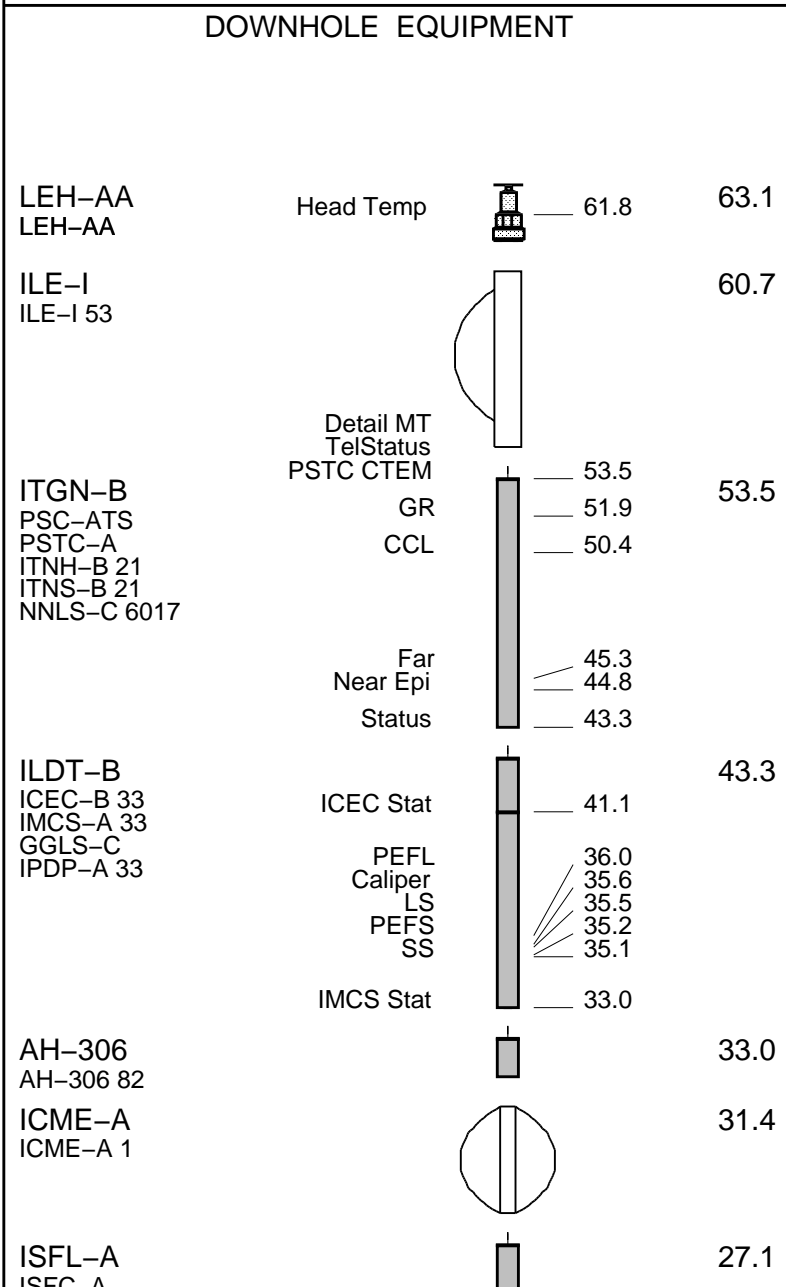
1. 1227 logged through dump pipe set at 5000 feet	
Repeat pass not done due to borehole temperature	
Rig: Xtreme 15	
Schlumberger Crew: Ed Ponce & Jake Jump	

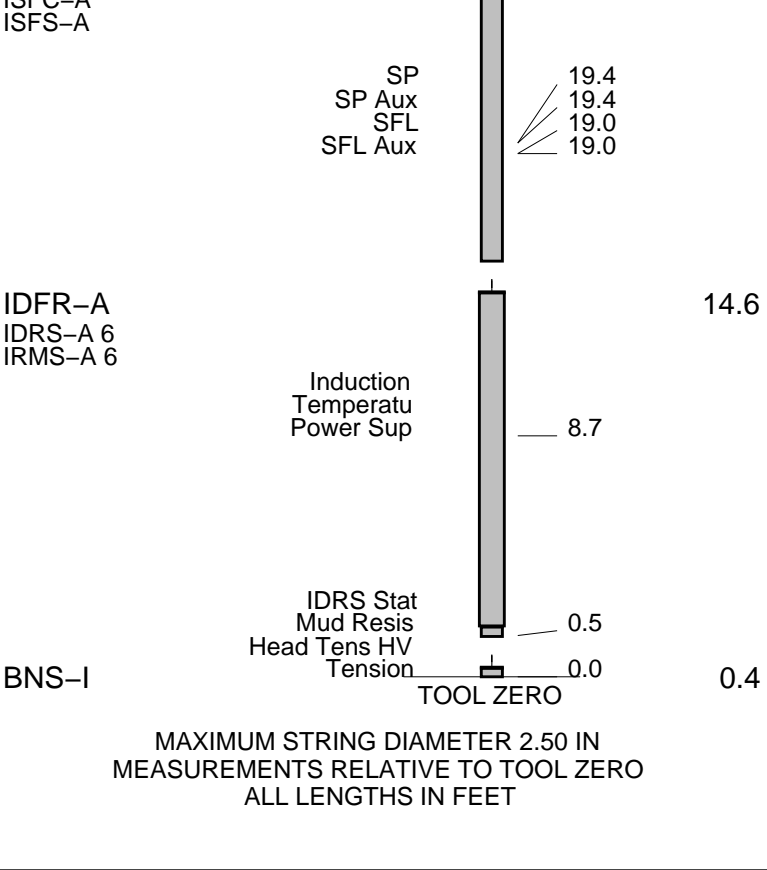
RUN 1			RUN 2		
SERVICE ORDER #:		BVZK-00008	SERVICE ORDER #:		
PROGRAM VERSION:		18C0-147	PROGRAM VERSION:		
FLUID LEVEL:		200 ft	FLUID LEVEL:		
LOGGED INTERVAL	START	STOP	LOGGED INTERVAL	START	STOP

EQUIPMENT DESCRIPTION					
RUN 1			RUN 2		

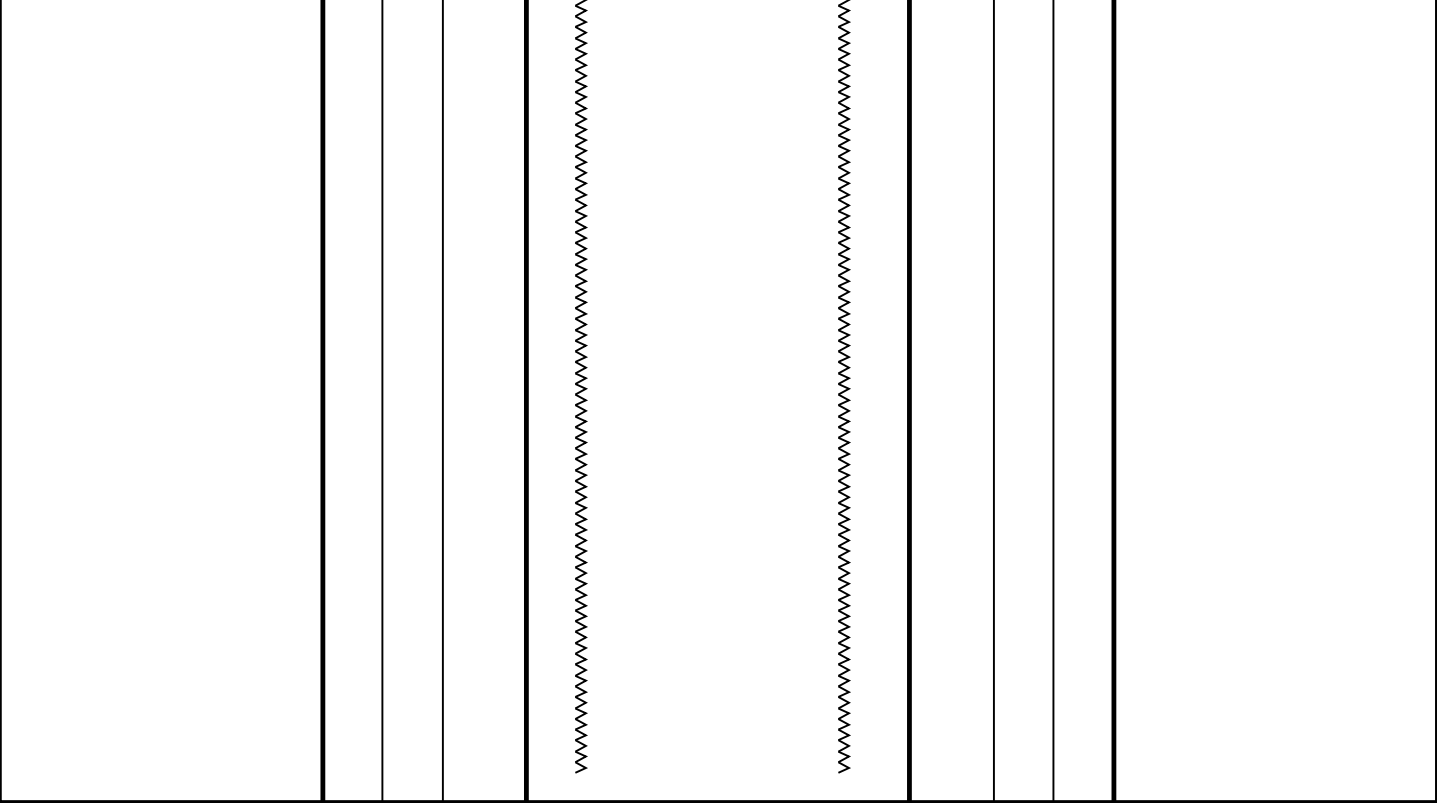
SURFACE EQUIPMENT

WITM-A
PSC_16MHZ





Production String	(in)		(ft)	Well Schematic	(ft)	(in)		Casing String
	OD	ID	MD		MD	OD	ID	
					0.0	8.625		Casing String
					1216.0	8.625		Casing Shoe
					1216.0	7.875		Borehole Segment



.....

Schlumberger

COMBO LOG 5" = 100'

MAXIS Field Log

Company: Kerr Mcgee Oil & Gas Onshore LP Well: Howard 2-32

Input DLIS Files

DEFAULT IDL_SFL_LDL_CNL_014LUP FN:13 PRODUCER 28-Oct-2011 06:17 8660.0 FT 0.0 FT

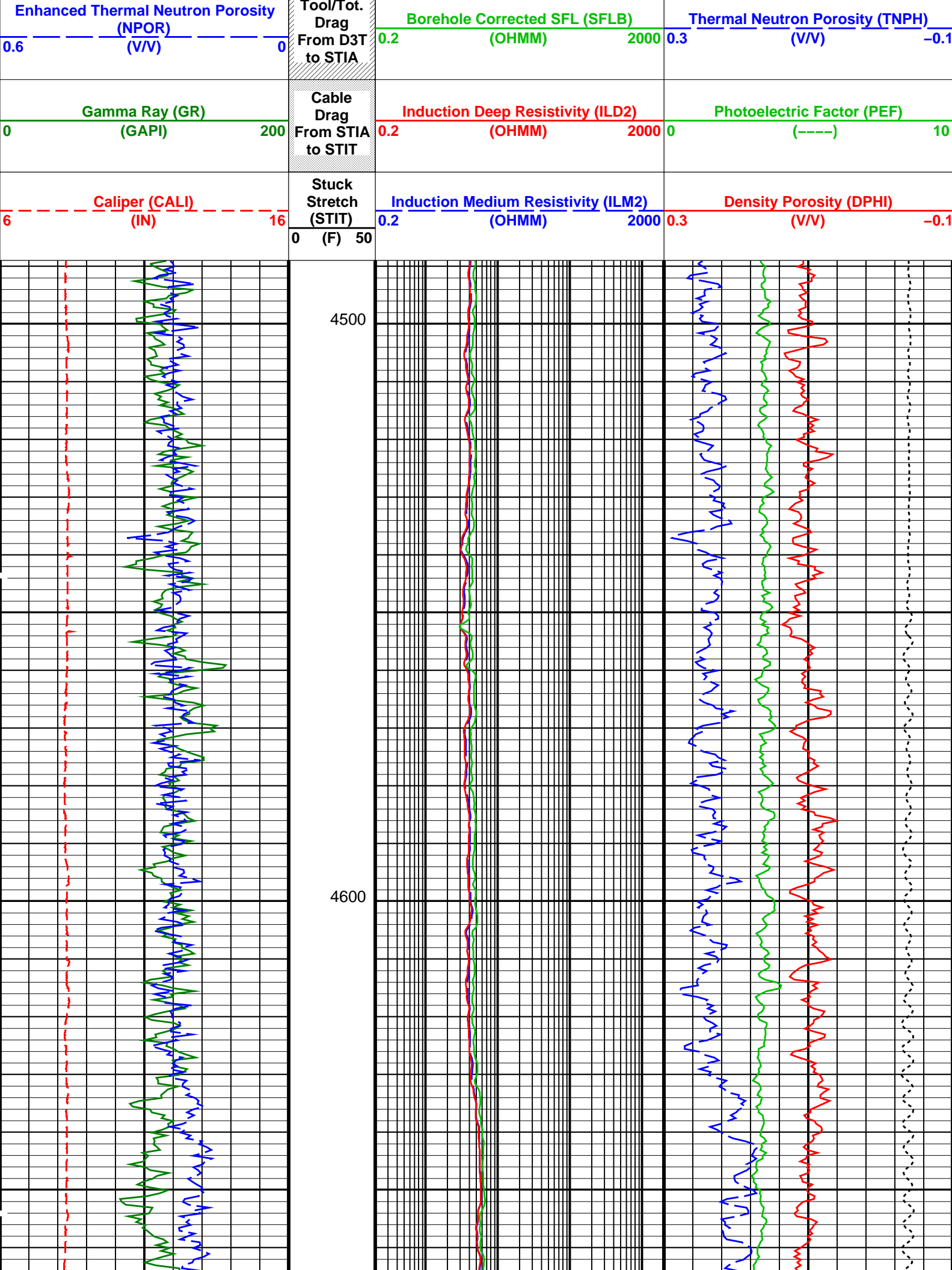
OP System Version: 18C0-147

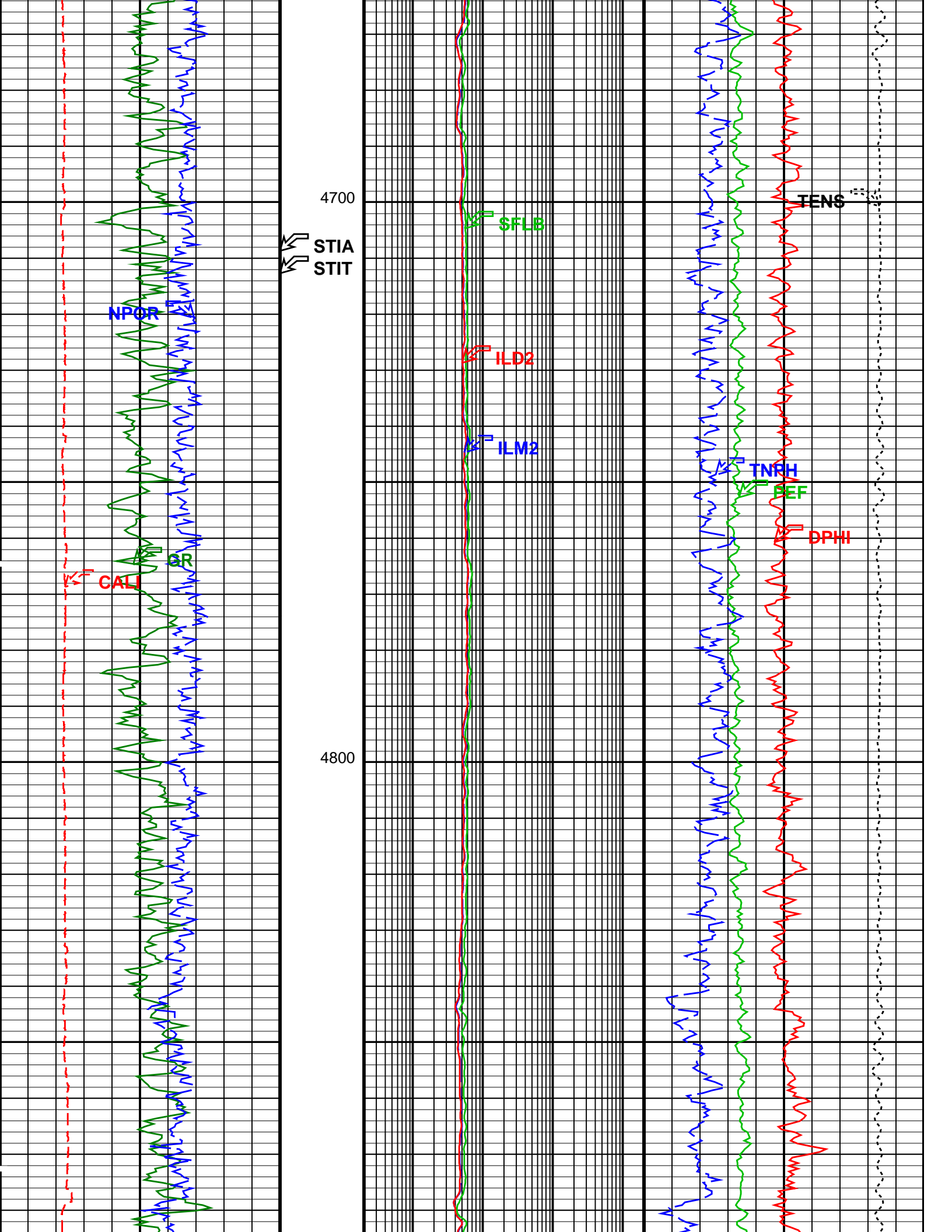
IDFR-A SPC-5020-IFLEX_b ISFL-A SPC-5020-IFLEX_b
ILDt-B SPC-5020-IFLEX_b ITGN-B SPC-5020-IFLEX_b

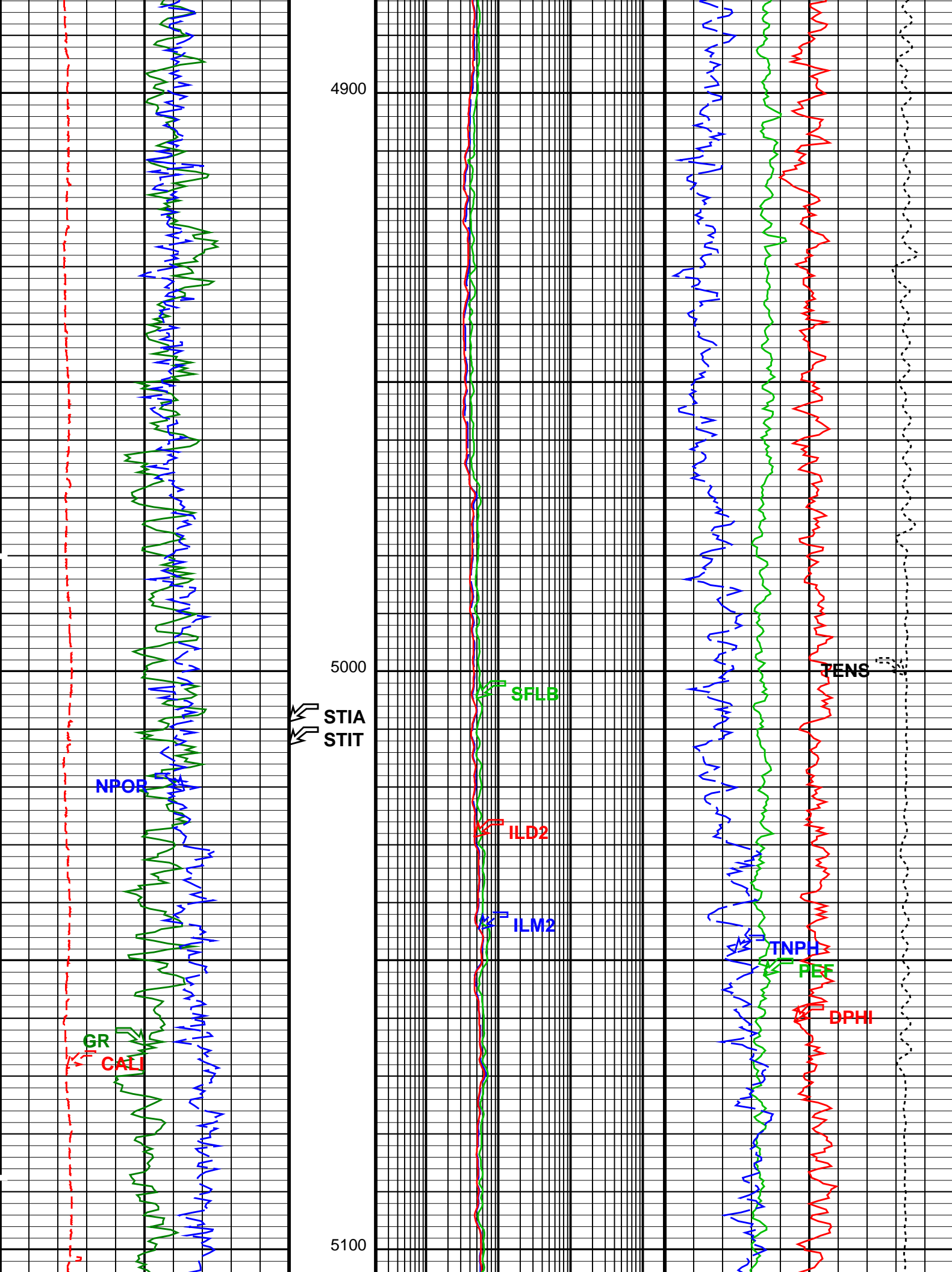
PIP SUMMARY

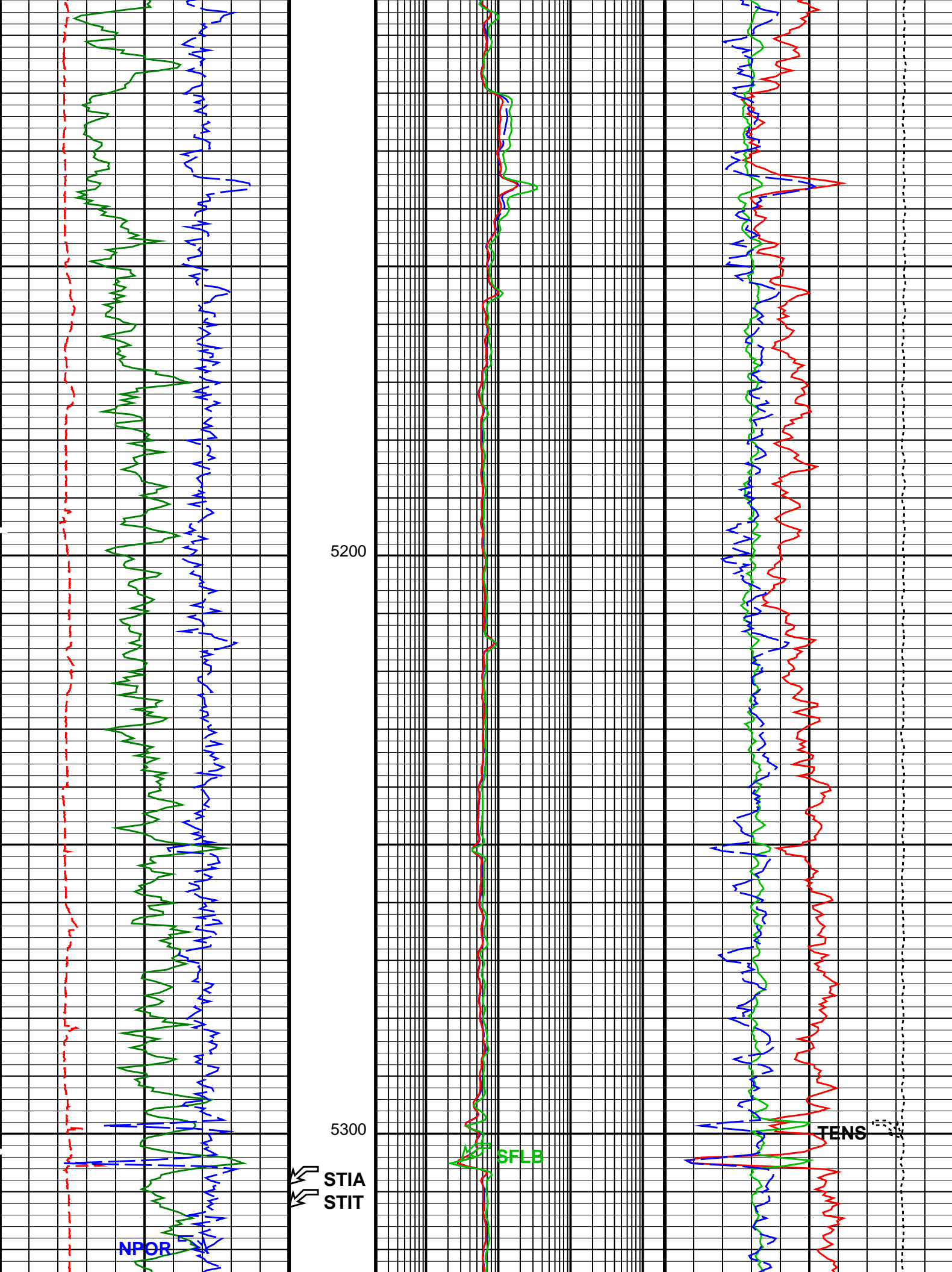
Time Mark Every 60 S

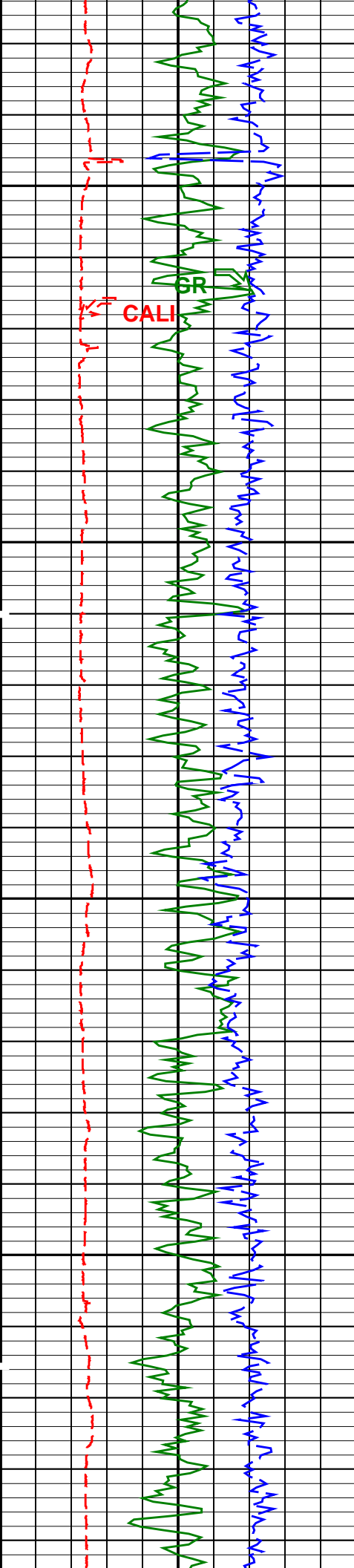
Tension (TENS)
10000 (LBF) 0





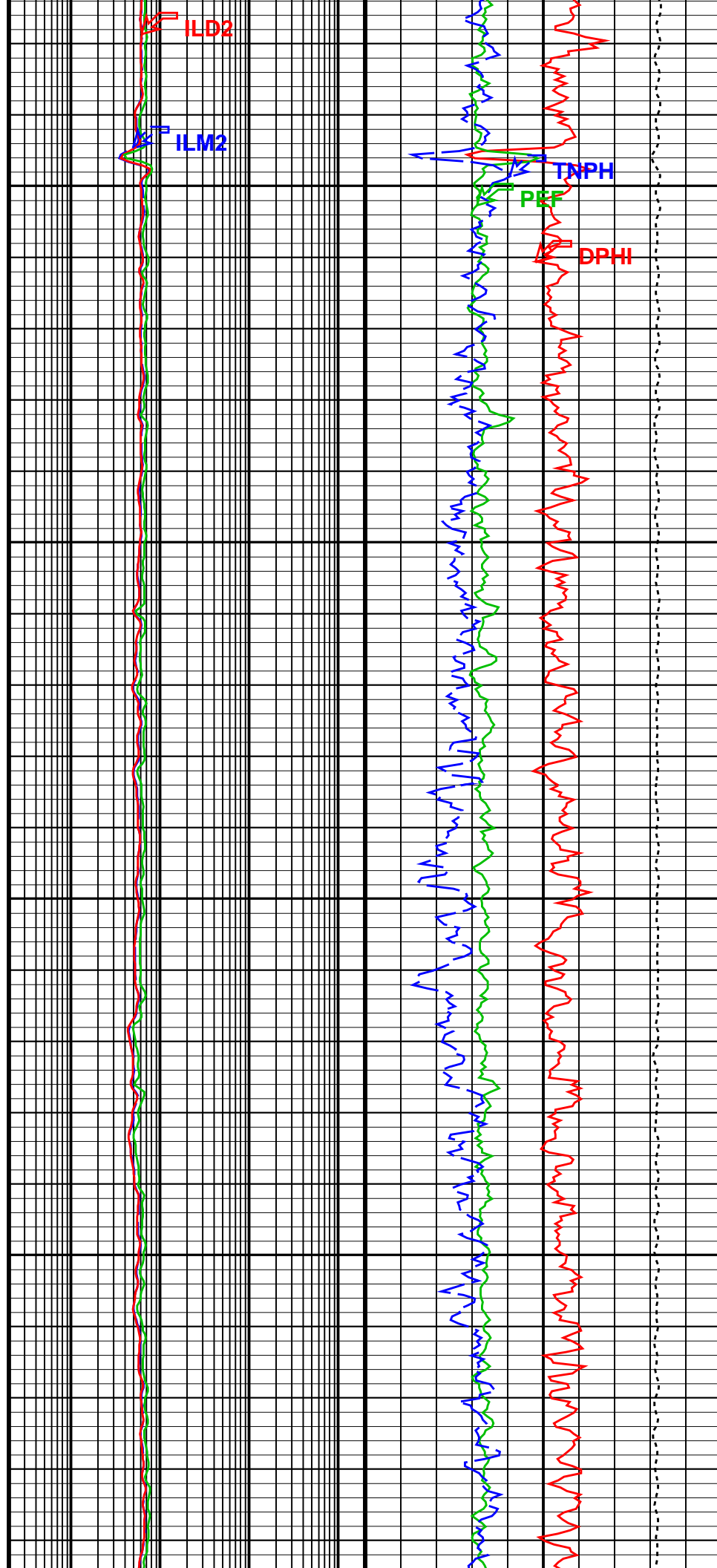


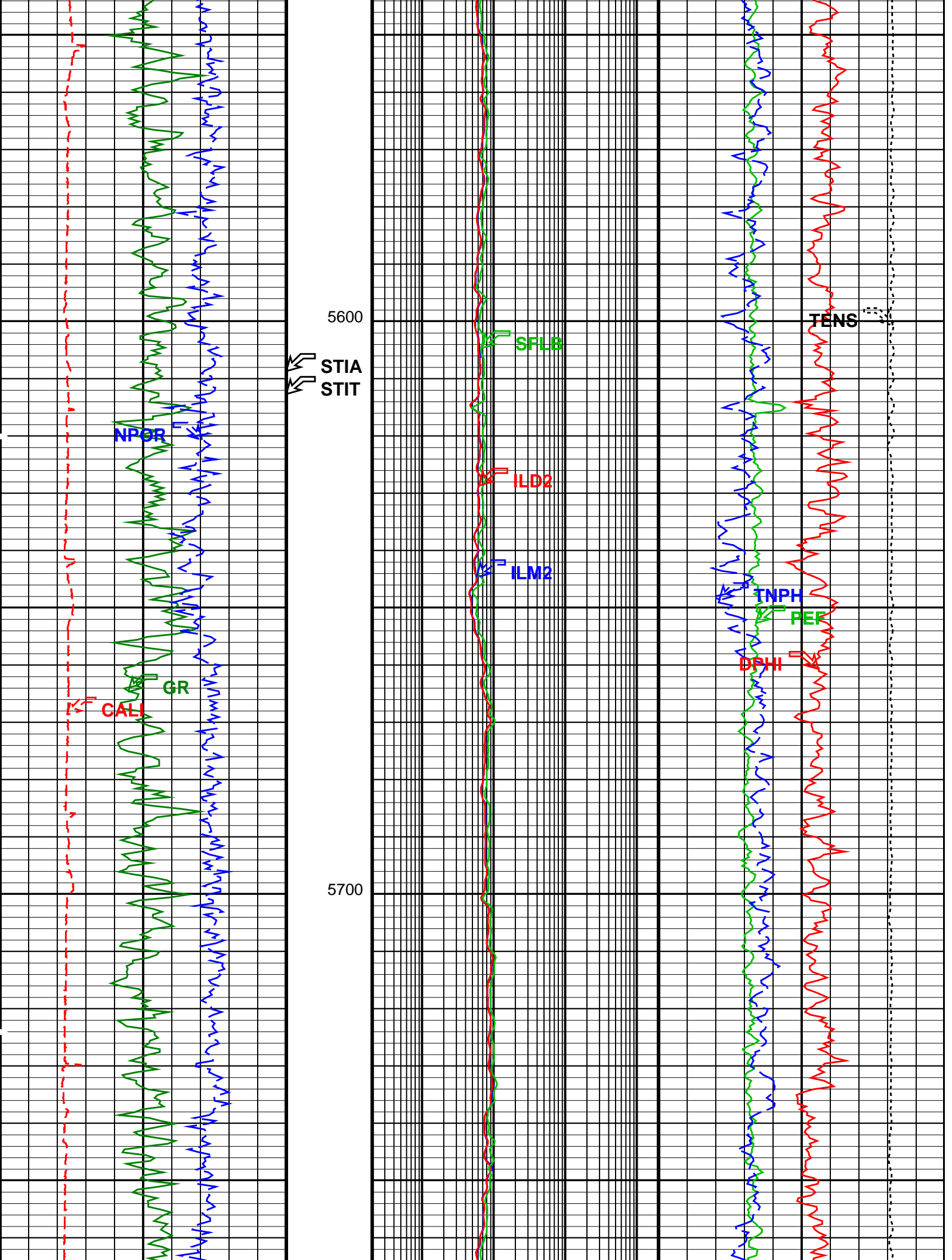


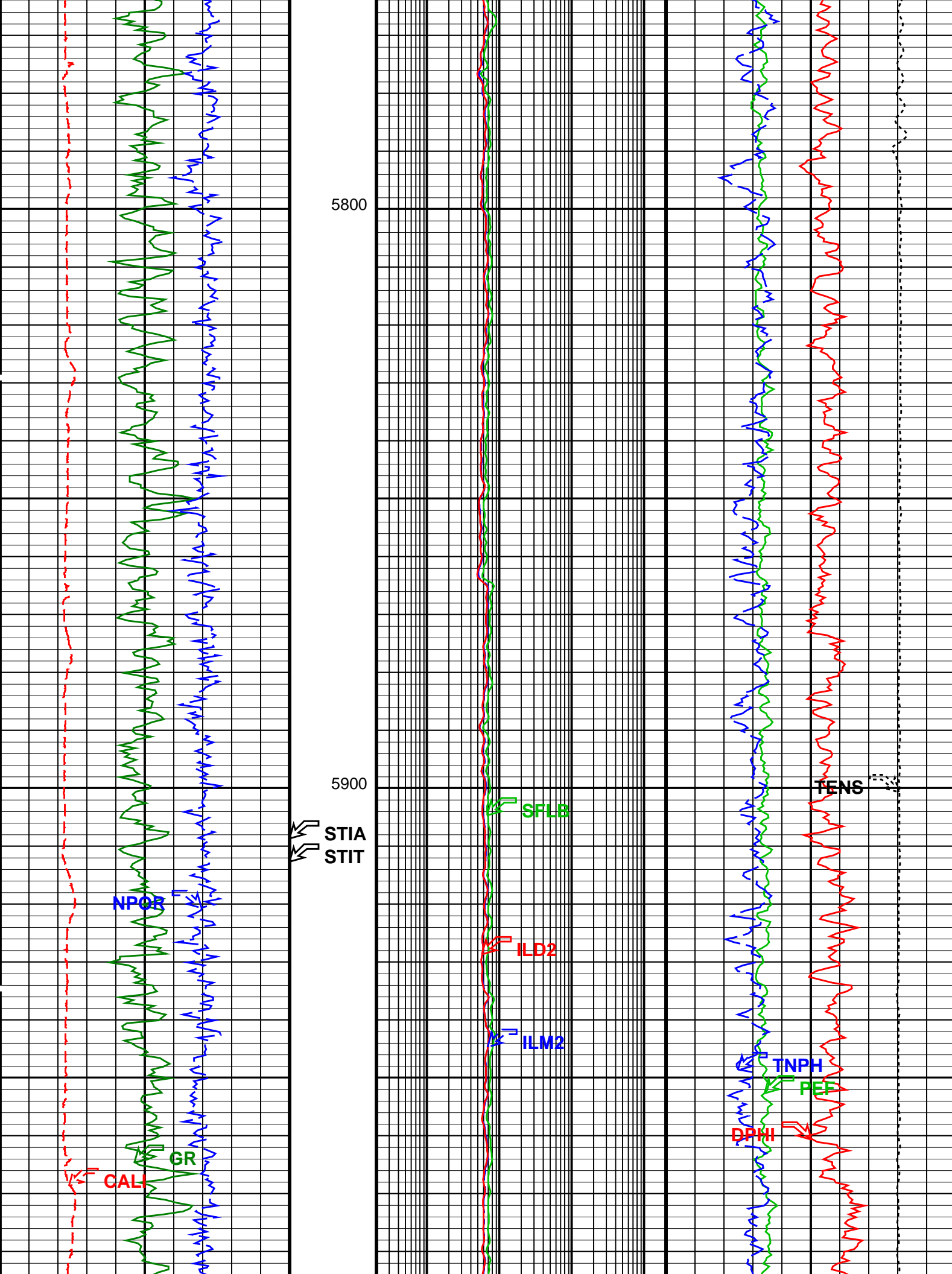


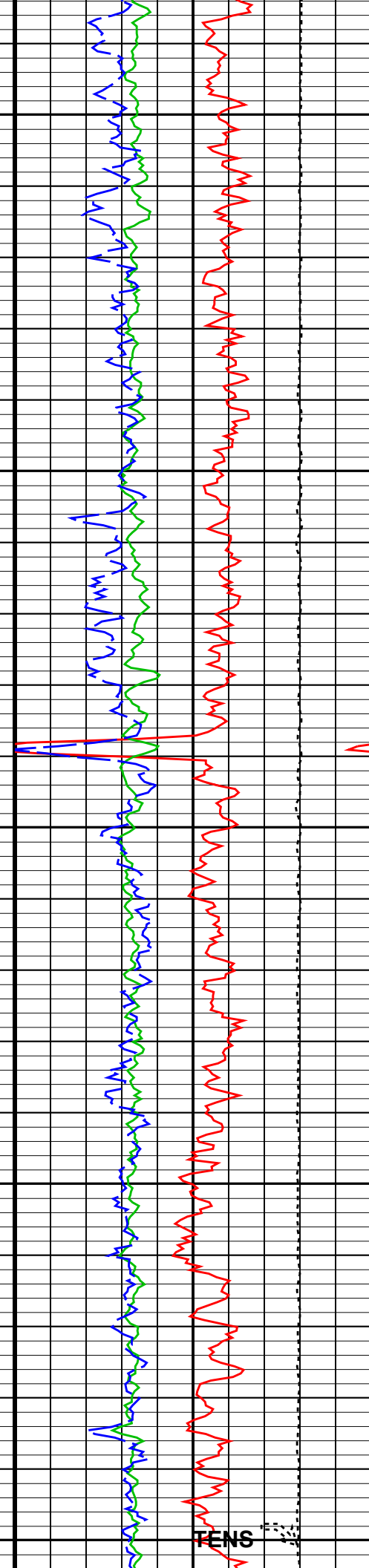
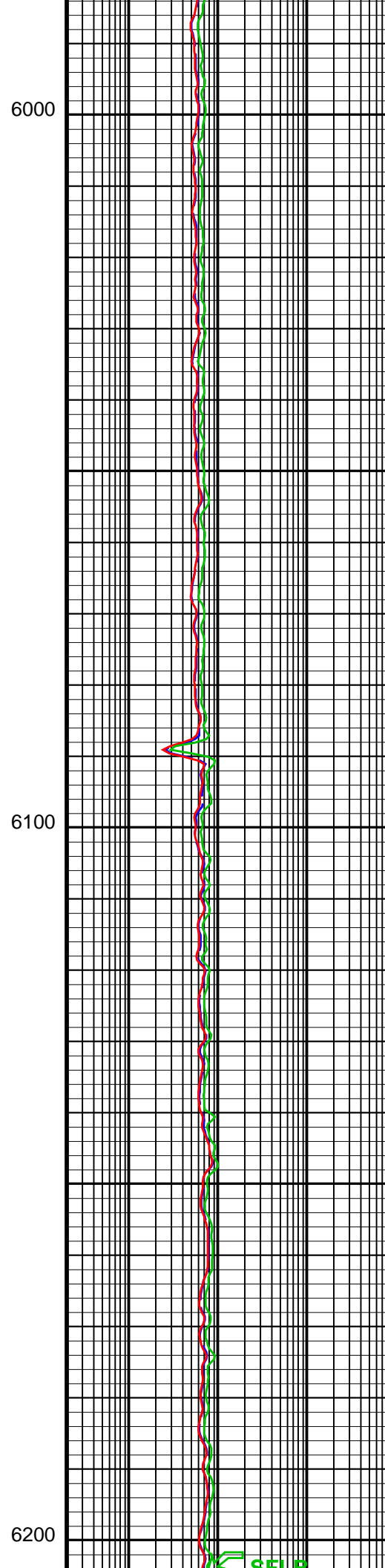
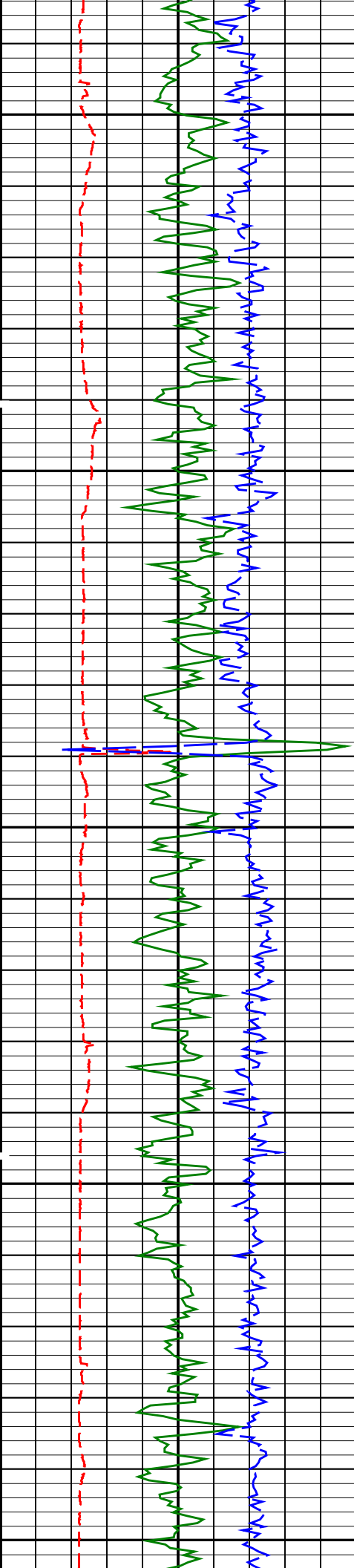
5400

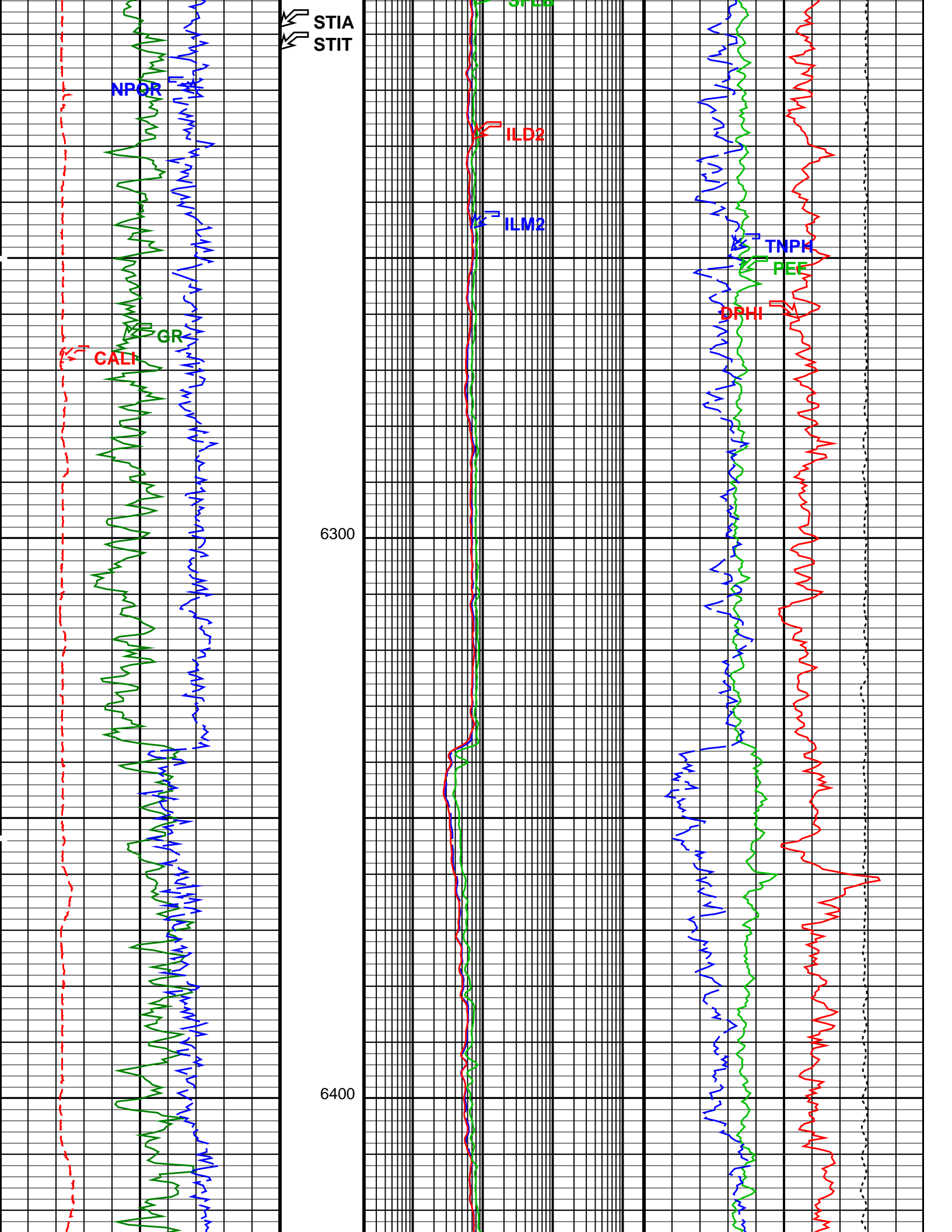
5500

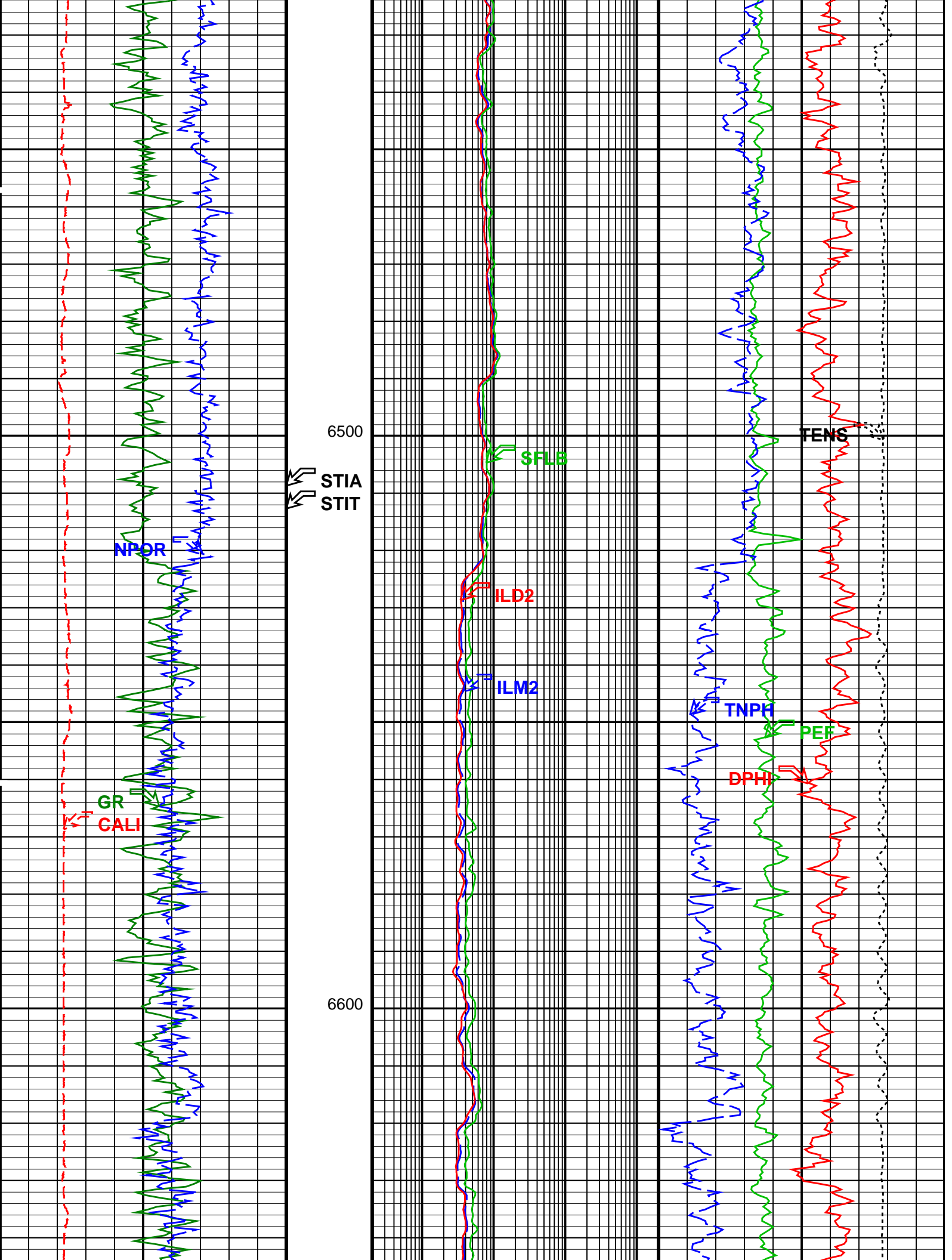


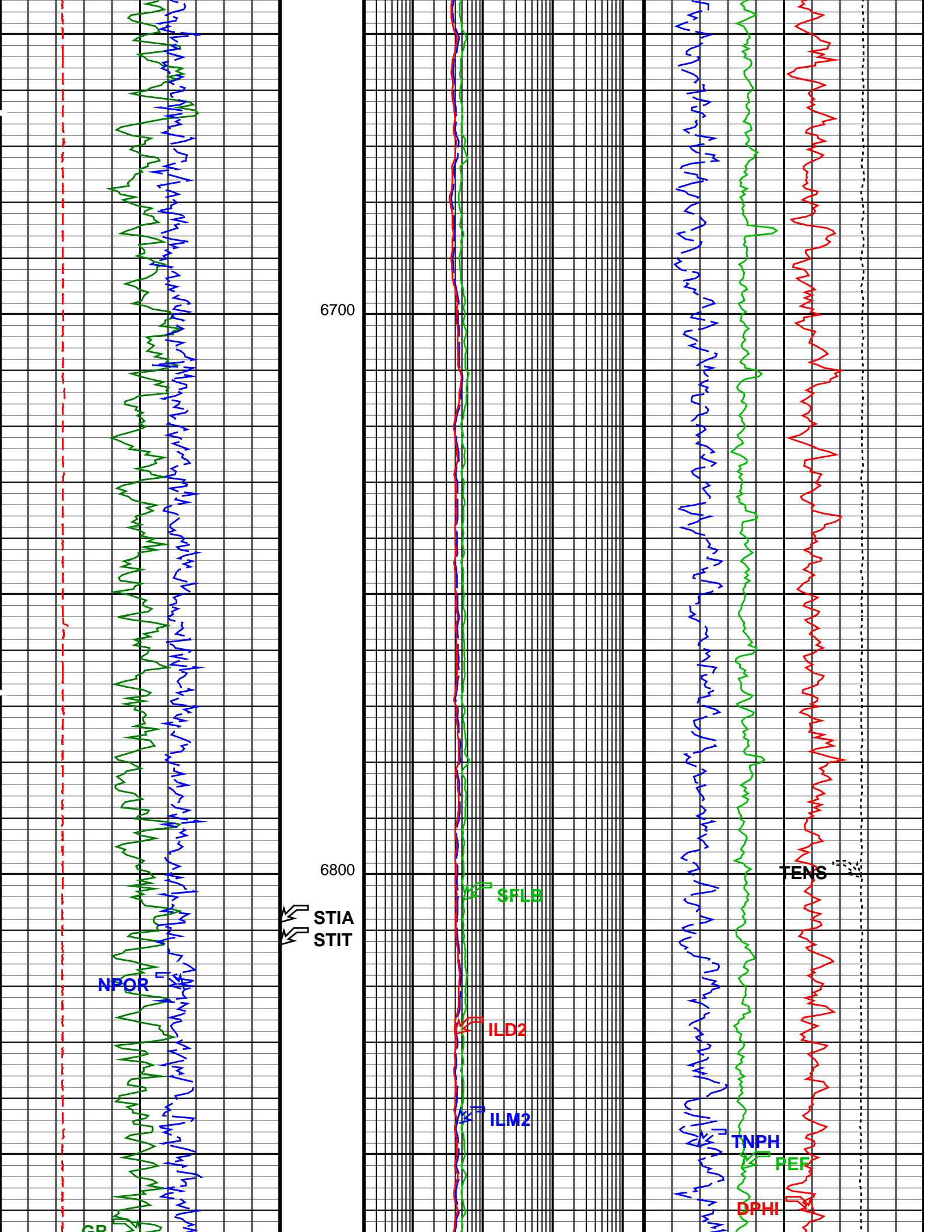


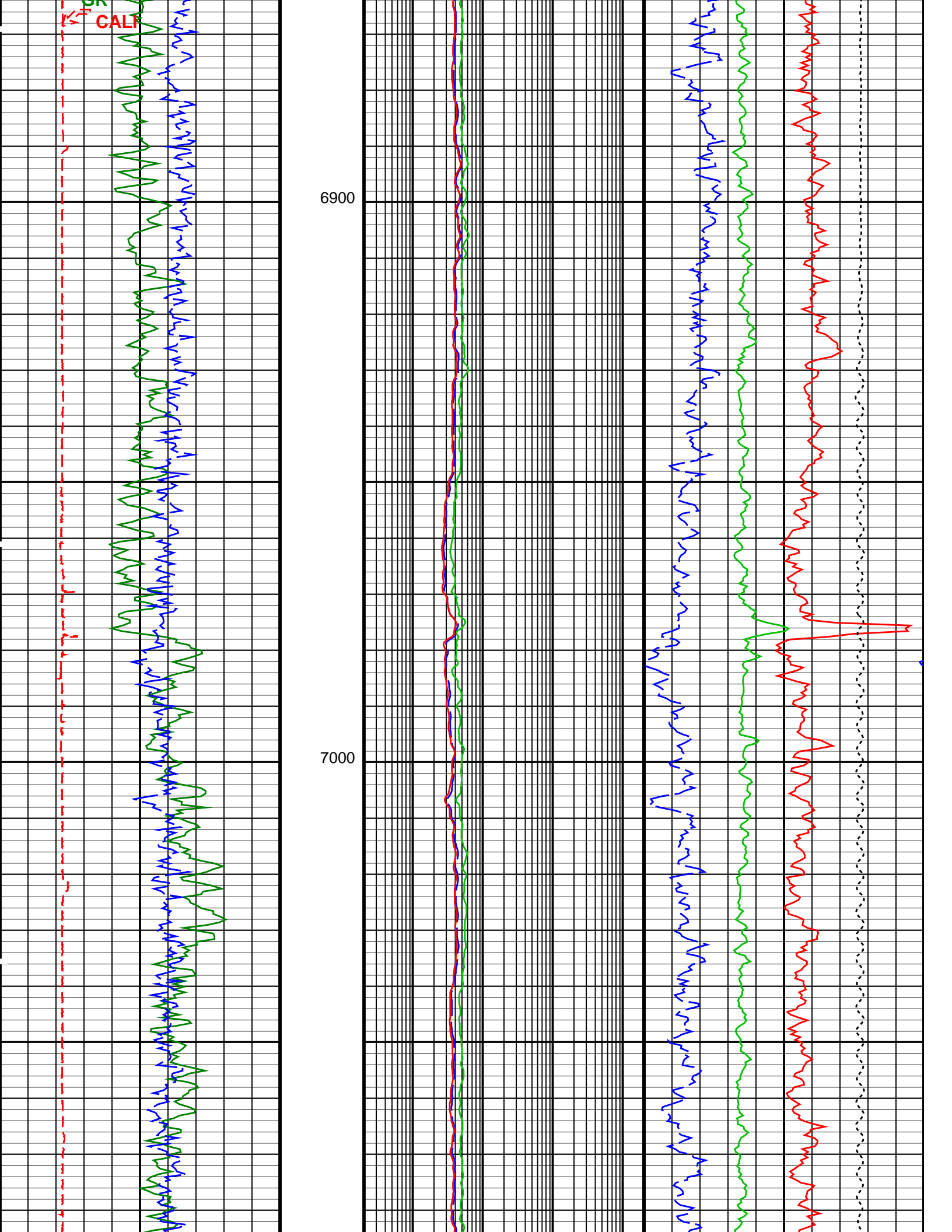


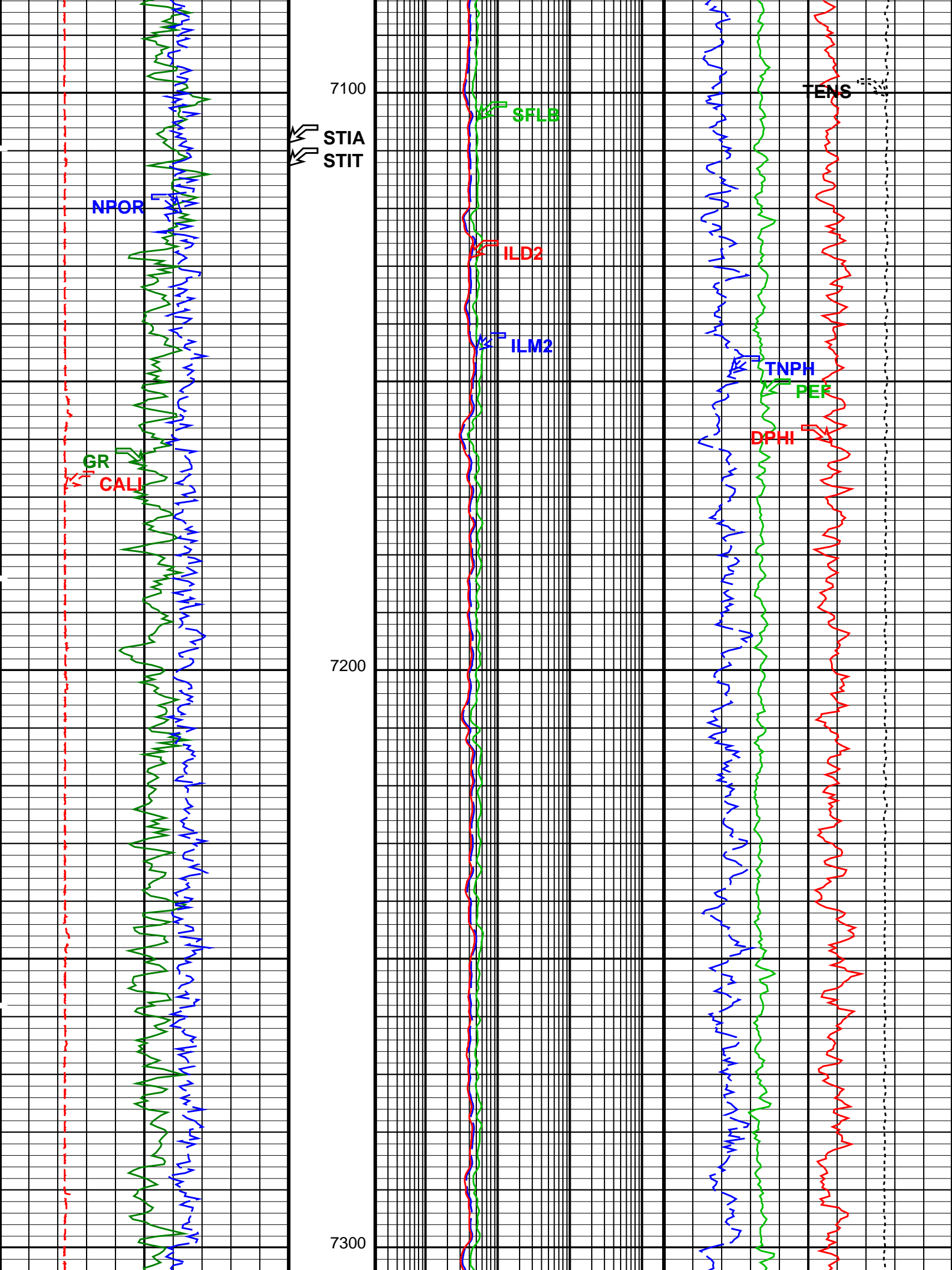


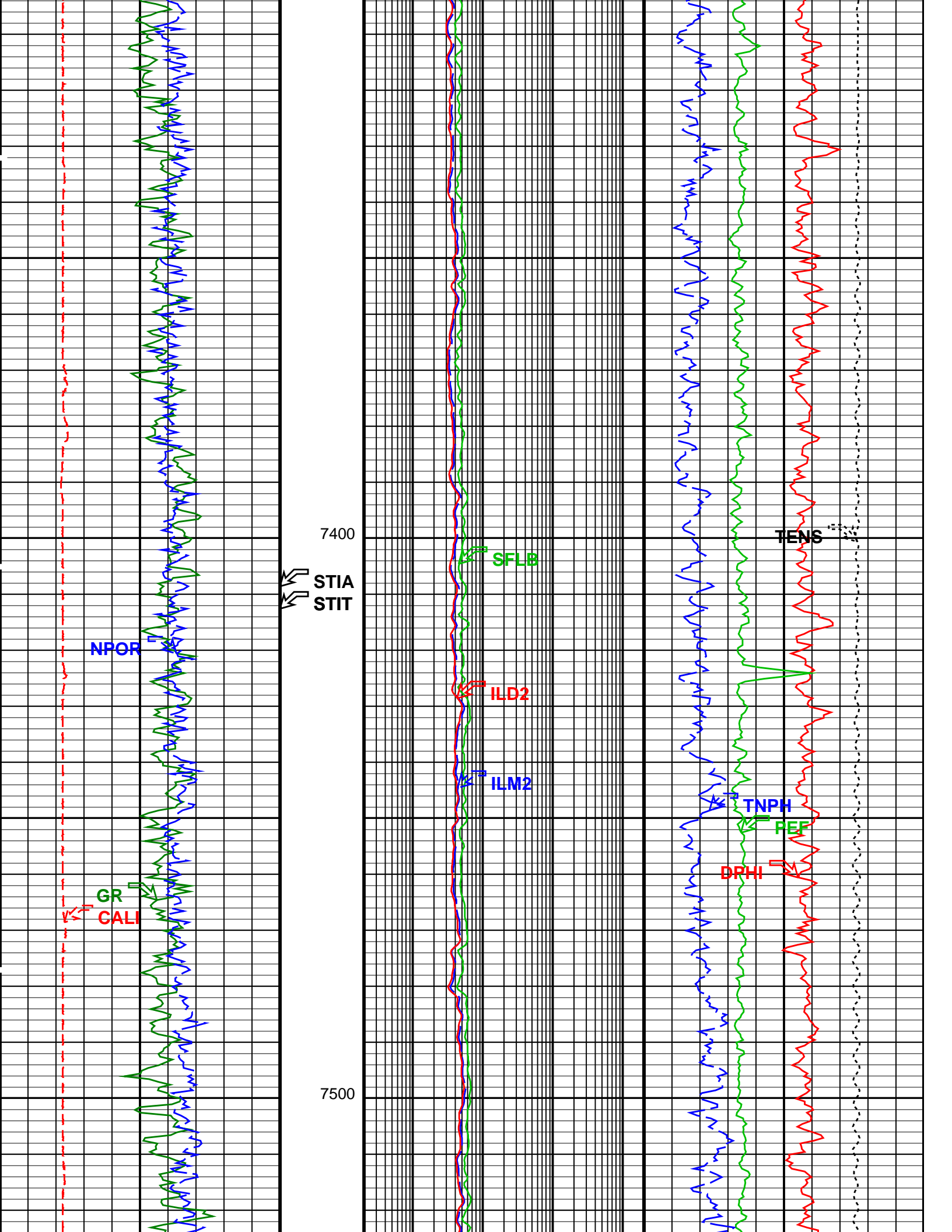


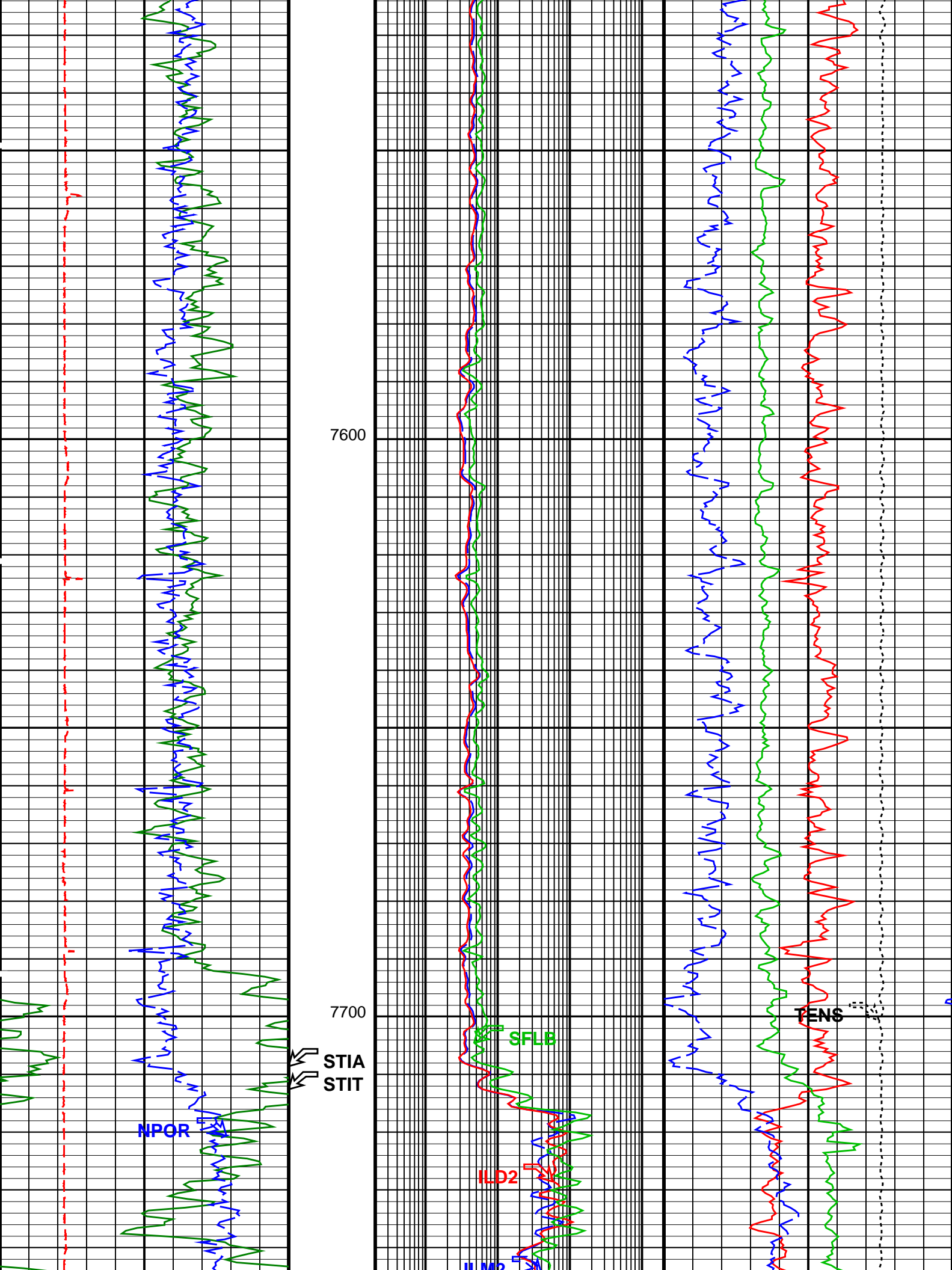


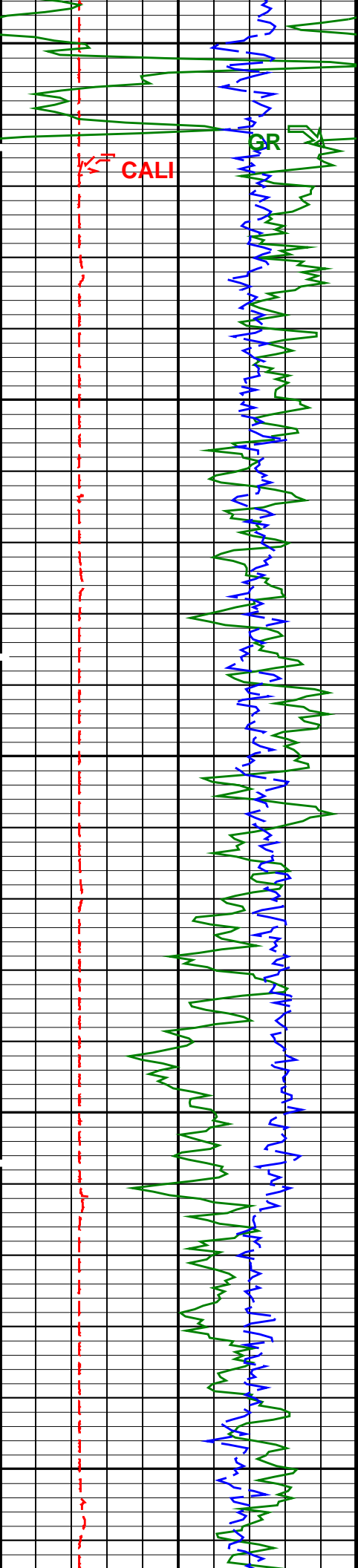






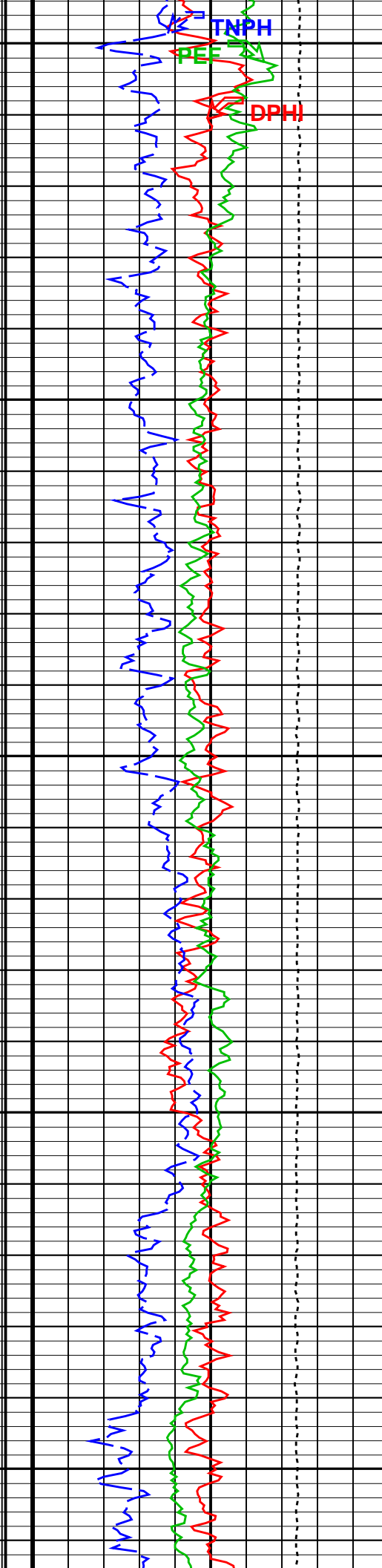
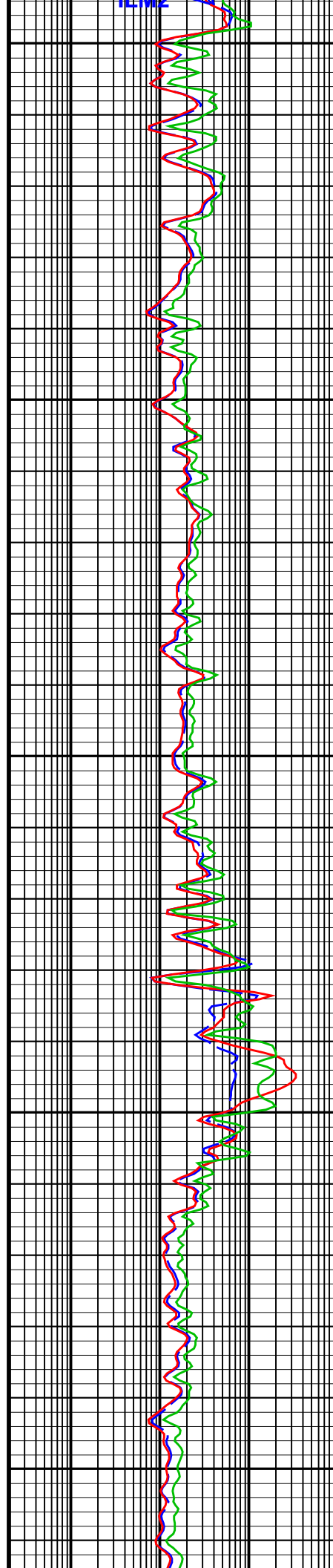


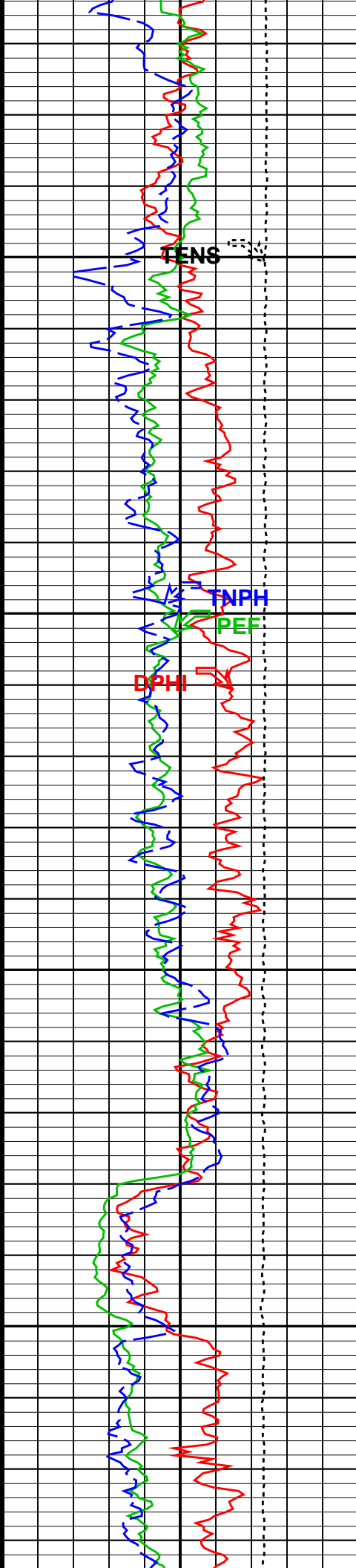
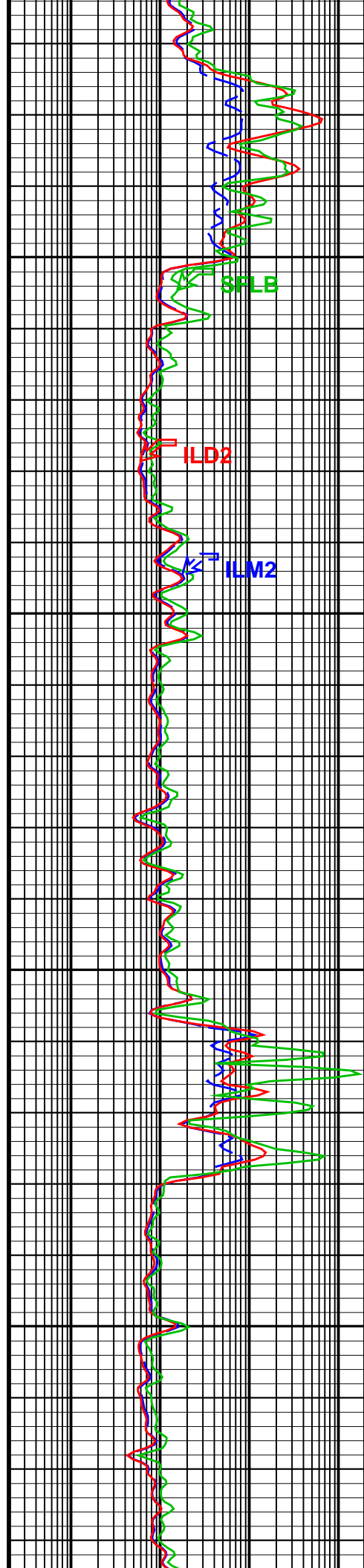
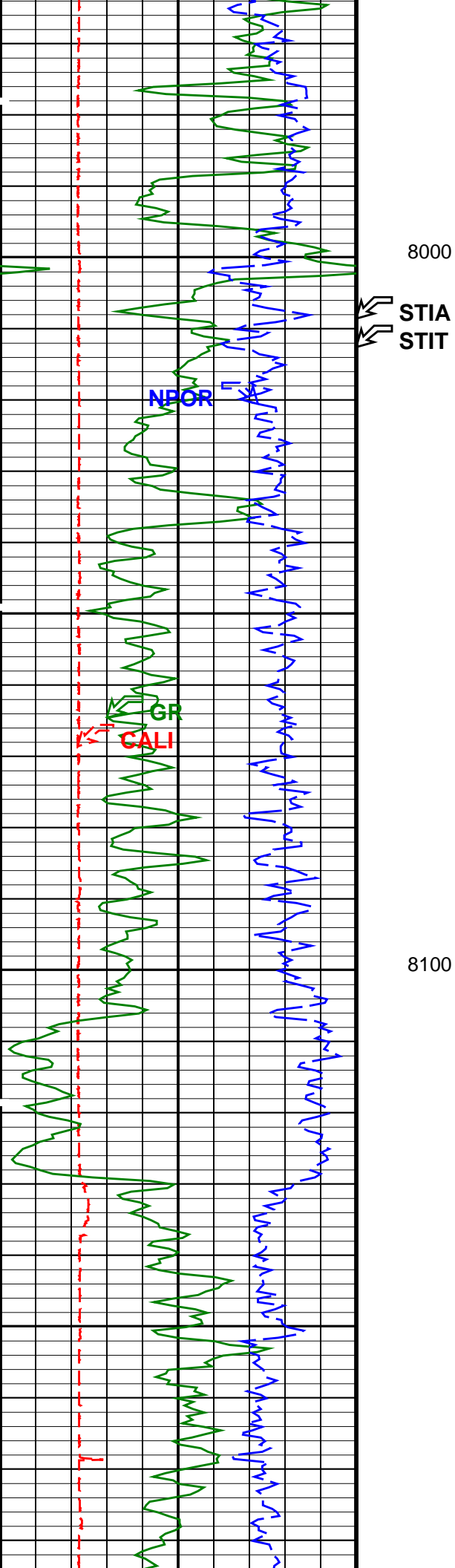


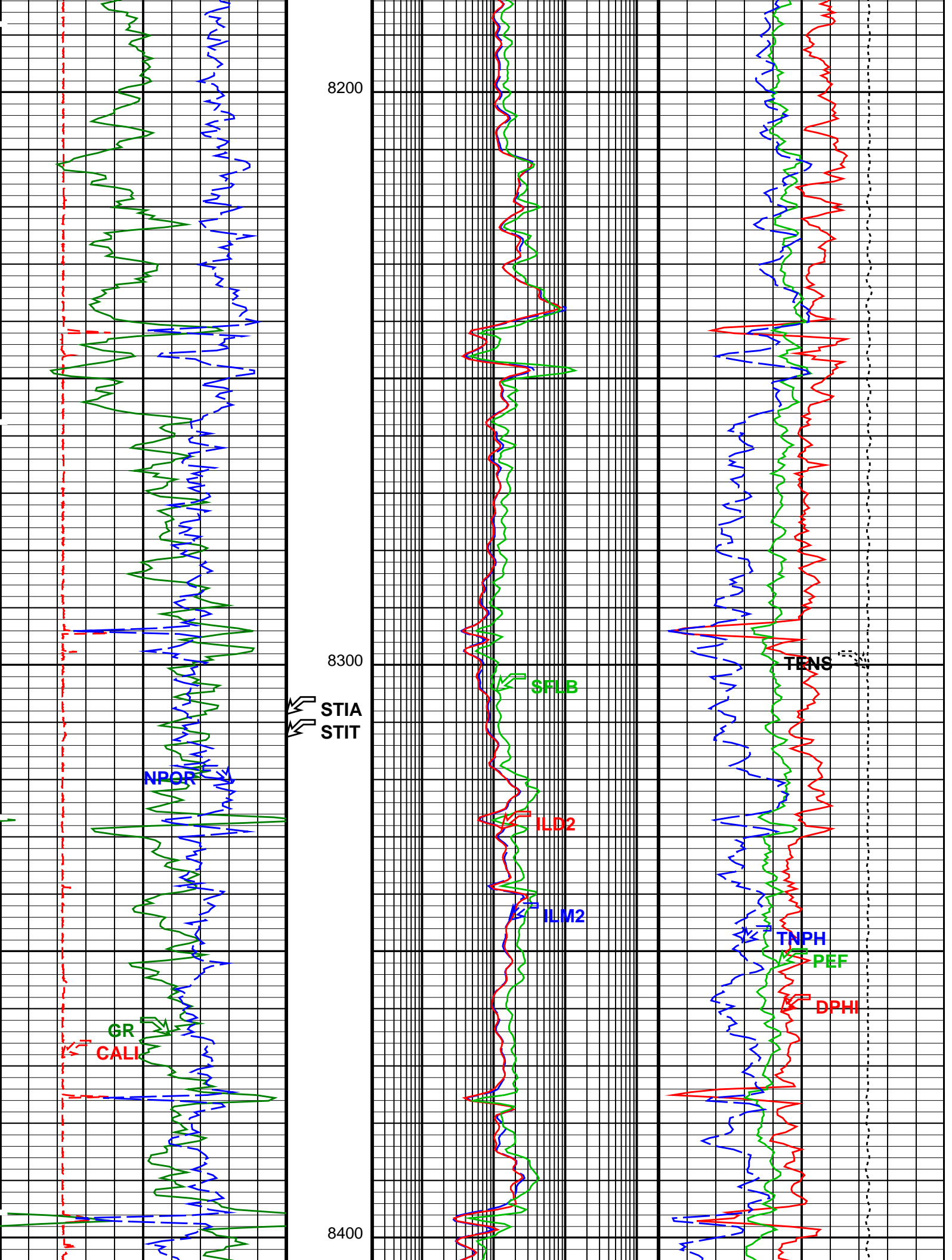


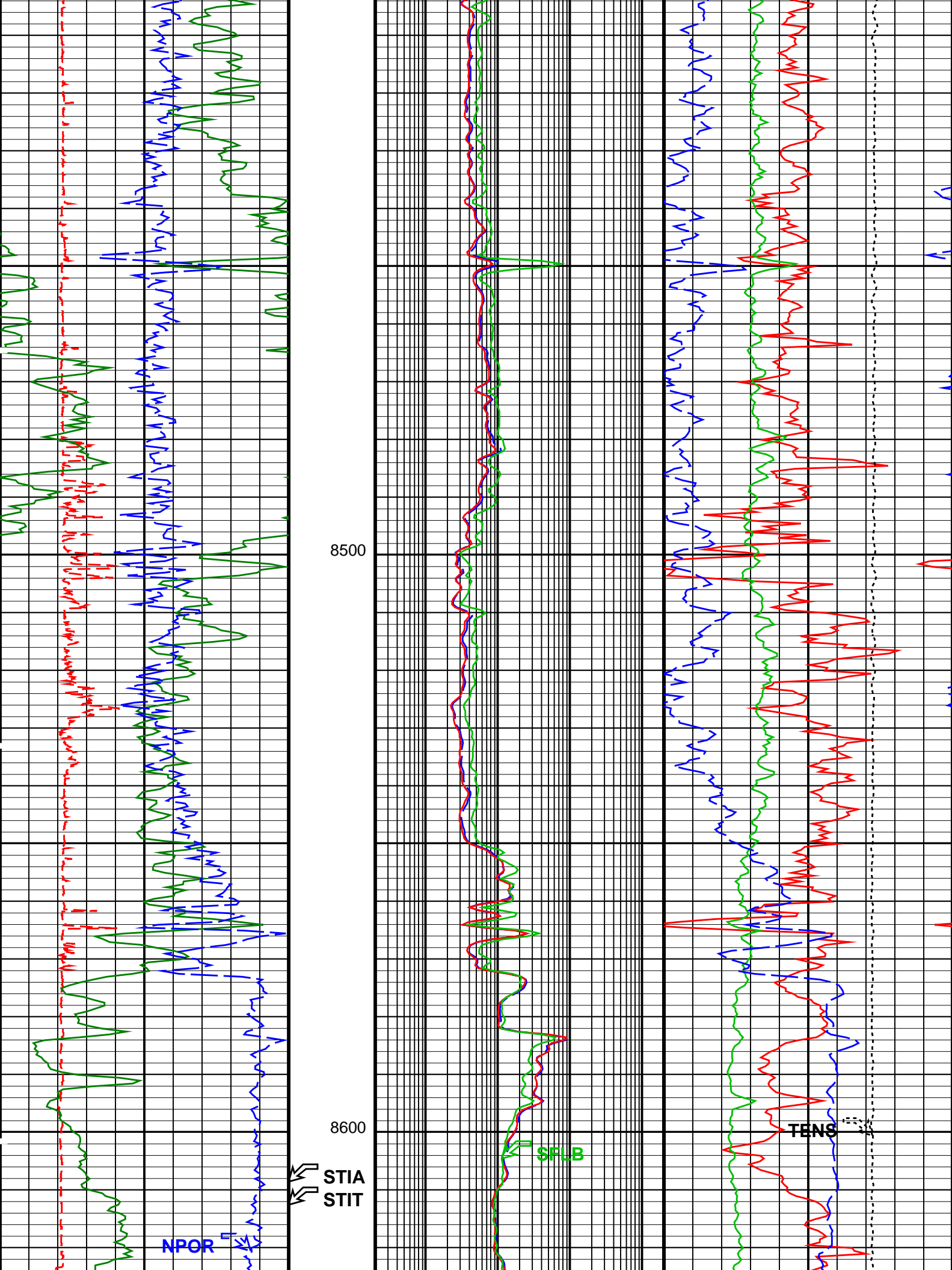
7800

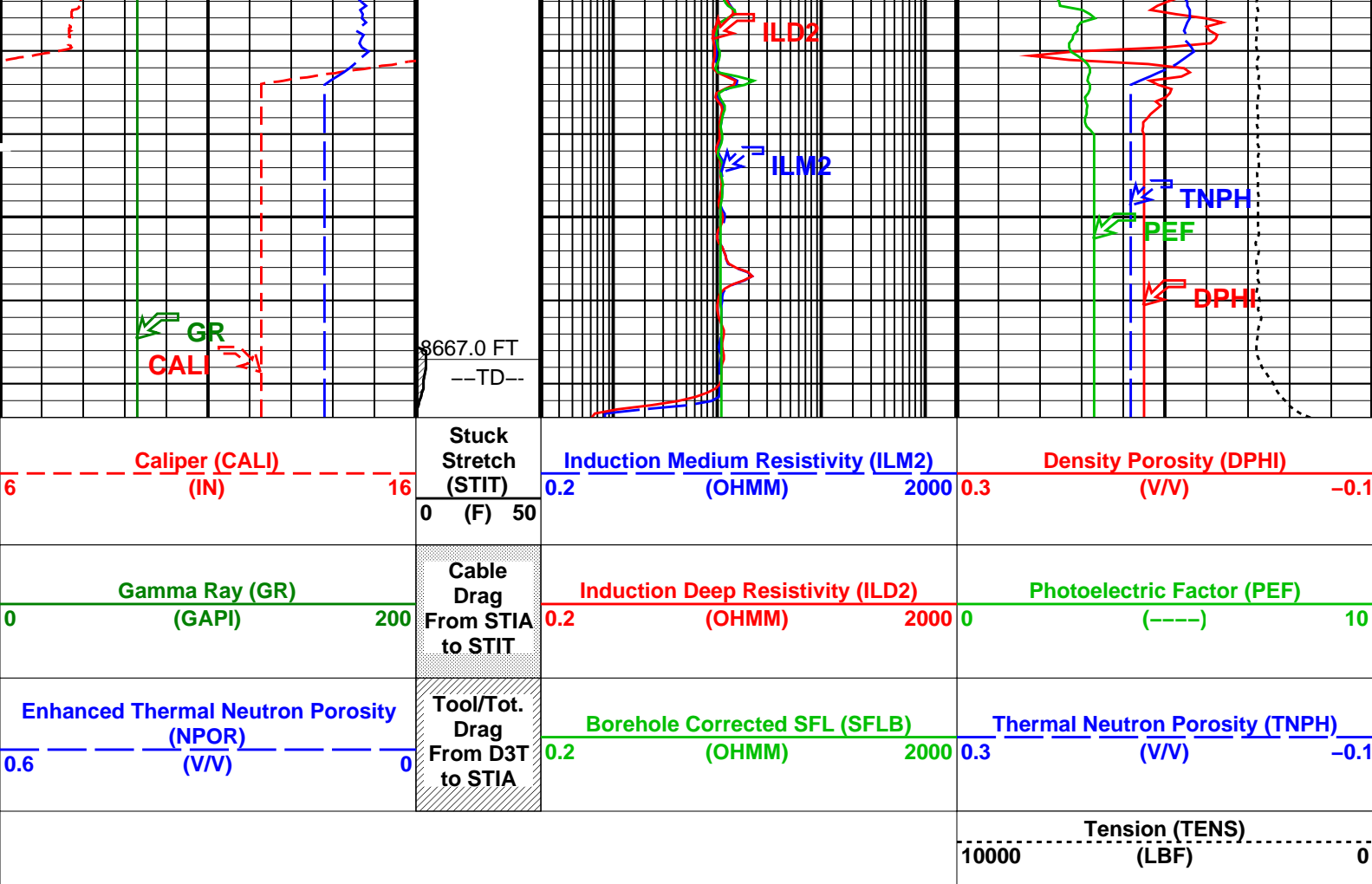
7900











PIP SUMMARY

Time Mark Every 60 S

Parameters

DLIS Name	Description	Value
IDFR-A: iFlex Dual Formation Resistivity Tool		
ABLV	Array Induction Basic Logs Code Version Number	223
ACEN	Array Induction Tool Centering Flag (in Borehole)	ECCENTERED
AETP	Array Induction Enable Sonde Error Temp&Pres Corr	TEMP_ON PRES_ON
AFRSV	Array Induction Response Set Version for Four ft Resolution	03.00.02.00
AIGS	Array Induction Select Akima Interpolation Gating	ON
AIGS_SFL_IDFR	SFL Select Akima Interpolation Gating	ON
ATRSV	Array Induction Response Set Version for Two ft Resolution	03.00.02.00
ATSE_IDFR	IDFR Temperature RTD Selection(Sonde Error Correction)	RTD1
AULV	Array Induction User Level Control	NORMAL
BHC_SIG_T	BHC Formation Conductivity Input	13R
BHPRSRC_IDFR	IDFR Pressure Source	BHPR
BHT	Bottom Hole Temperature (used in calculations)	177.0 degF
DFT_IFLEX	Drilling Fluid Type	WATER
DO	Depth Offset	14.0 ft
FEXP	Form Factor Exponent	2.000
FNUM	Form Factor Numerator	1.000
GCSE	Generalized Caliper Selection	CALI
GDEV	Average Angular Deviation of Borehole from Normal	0.000 deg
GGRD	Geothermal Gradient	0.010 degF/ft
GRSE	Generalized Mud Resistivity Selection	AMF_IDFR
GTSE	Generalized Temperature Selection	TEMP
ISOD	Induction Standoff Outer Diameter	2.250 in
SHT	Surface Hole Temperature	68.000 degF
ILD2-B: iFlex Litho Density Tool		
BHT	Bottom Hole Temperature (used in calculations)	177.0 degF
DFT_IFLEX	Drilling Fluid Type	WATER
DO	Depth Offset	14.0 ft
GCSE	Generalized Caliper Selection	CALI
GDEV	Average Angular Deviation of Borehole from Normal	0.000 deg
GGRD	Geothermal Gradient	0.010 degF/ft
GRSE	Generalized Mud Resistivity Selection	AMF_IDFR
GTSE	Generalized Temperature Selection	TEMP
SHT	Surface Hole Temperature	68.000 degF

ITGN-B: iFlex Telemetry Gamma Neutron Tool			
BHT	Bottom Hole Temperature (used in calculations)	177.0	degF
DFT_IFLEX	Drilling Fluid Type	WATER	
DO	Depth Offset	14.0	ft
GCSE	Generalized Caliper Selection	CALI	
GDEV	Average Angular Deviation of Borehole from Normal	0.000	deg
GGRD	Geothermal Gradient	0.010	degF/ft
GRSE	Generalized Mud Resistivity Selection	AMF_IDFR	
GTSE	Generalized Temperature Selection	TEMP	
SHT	Surface Hole Temperature	68.000	degF
RWA: Apparent Water Resistivity			
DO	Depth Offset	14.0	ft
FEXP	Form Factor Exponent	2.000	
FNUM	Form Factor Numerator	1.000	
FEQL: Formation Evaluation Quick Look			
DO	Depth Offset	14.0	ft
FEXP	Form Factor Exponent	2.000	
FNUM	Form Factor Numerator	1.000	
HOLEV: Integrated Hole/Cement Volume			
BHT	Bottom Hole Temperature (used in calculations)	177.0	degF
DO	Depth Offset	14.0	ft
GCSE	Generalized Caliper Selection	CALI	
GDEV	Average Angular Deviation of Borehole from Normal	0.000	deg
GGRD	Geothermal Gradient	0.010	degF/ft
GRSE	Generalized Mud Resistivity Selection	AMF_IDFR	
GTSE	Generalized Temperature Selection	TEMP	
SHT	Surface Hole Temperature	68.000	degF
PERT: Preliminary Evaluation – Real Time			
BHT	Bottom Hole Temperature (used in calculations)	177.0	degF
DO	Depth Offset	14.0	ft
FEXP	Form Factor Exponent	2.000	
FNUM	Form Factor Numerator	1.000	
GCSE	Generalized Caliper Selection	CALI	
GDEV	Average Angular Deviation of Borehole from Normal	0.000	deg
GGRD	Geothermal Gradient	0.010	degF/ft
GRSE	Generalized Mud Resistivity Selection	AMF_IDFR	
GTSE	Generalized Temperature Selection	TEMP	
SHT	Surface Hole Temperature	68.000	degF
STI: Stuck Tool Indicator			
DO	Depth Offset	14.0	ft
STKT	STI Stuck Threshold	2.500	ft
TDD	Total Depth – Driller	8702.0	ft
TDL	Total Depth – Logger	8690.0	ft
System and Miscellaneous			
BS	Bit Size	7.875	in
DO	Depth Offset	14.0	ft
FLEV	Fluid Level	200.0	ft
MST	Mud Sample Temperature	167.0	degF
TD	Total Depth	8702.0	ft

Format: TCOMBO 2ftres Vertical Scale: 5" per 100' Graphics File Created: 28-Oct-2011 06:50

OP System Version: 18C0-147

IDFR-A	SPC-5020-IFLEX_b	ISFL-A	SPC-5020-IFLEX_b
ILDT-B	SPC-5020-IFLEX_b	ITGN-B	SPC-5020-IFLEX_b

Input DLIS Files

DEFAULT	IDL_SFL_LDL_CNL_014LUP	FN:13	PRODUCER	28-Oct-2011 06:17	8660.0 FT	0.0 FT
---------	------------------------	-------	----------	-------------------	-----------	--------

Company: **Kerr Mcgee Oil & Gas Onshore LP**

Schlumberger

Well: **Howard 2-32**

Field: **Wattenberg #90750**

County: **Weld**

State: **Colorado**

Platform Express – IFLEX
Triple Combo