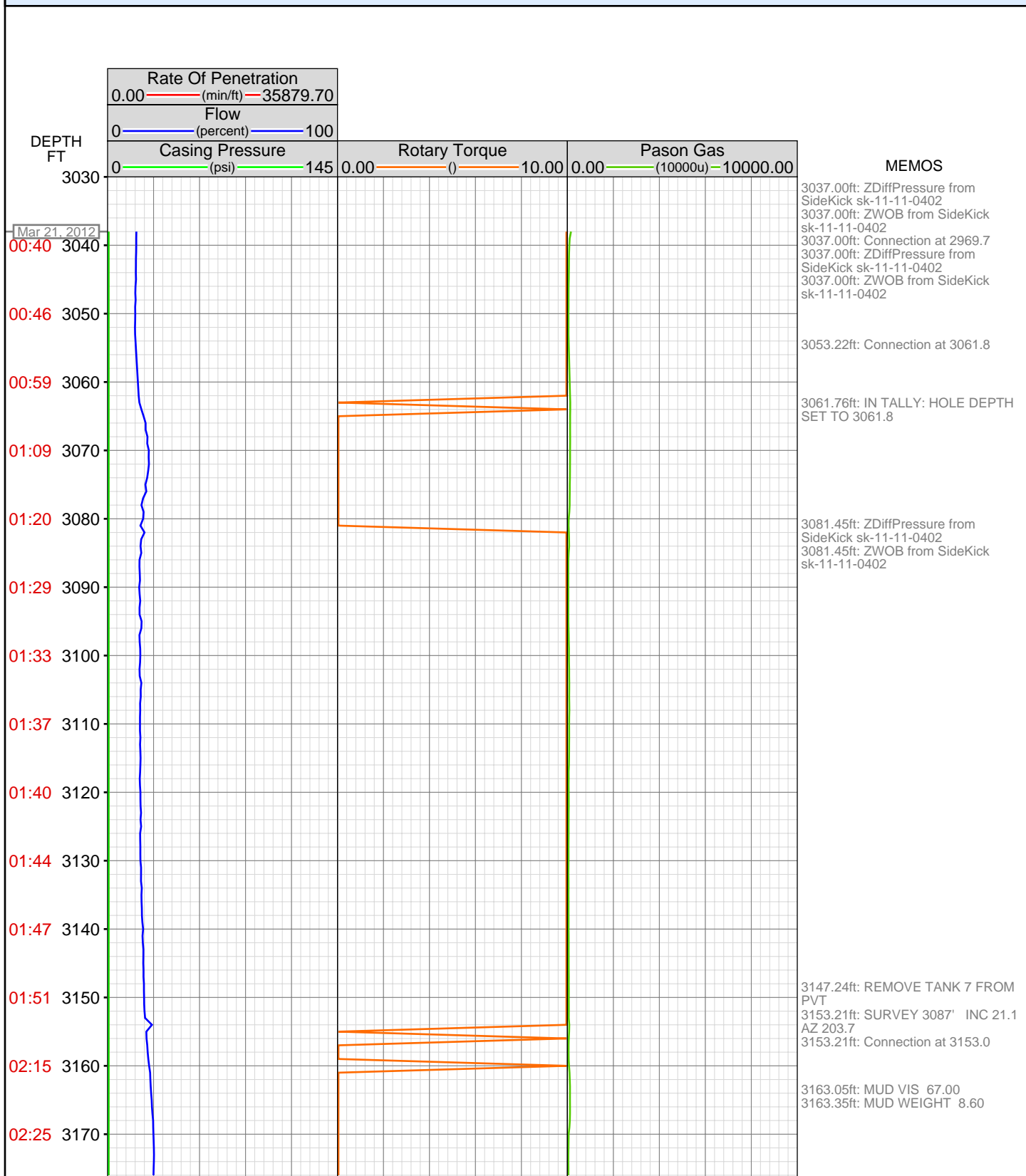


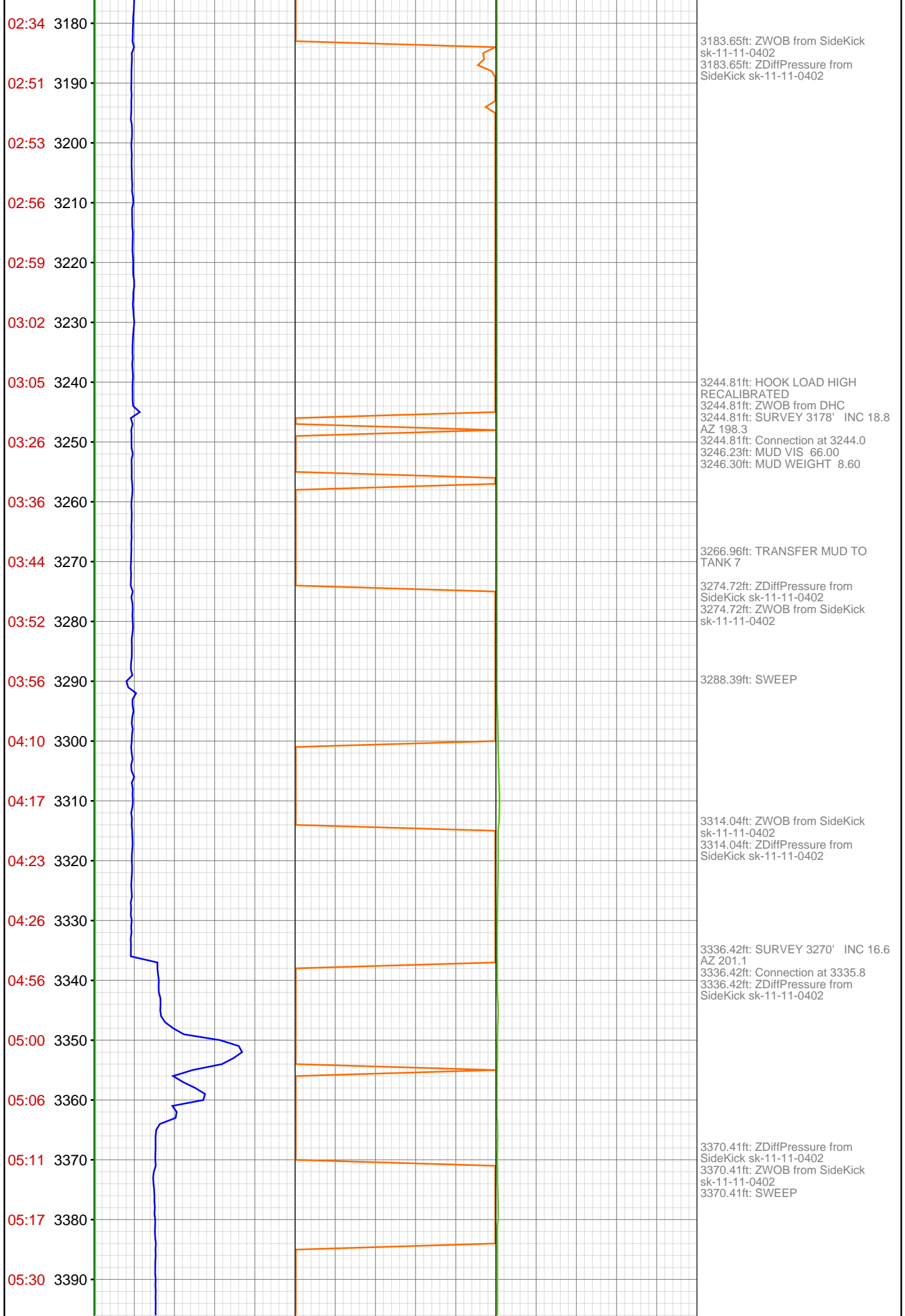
DataHub EDR Log

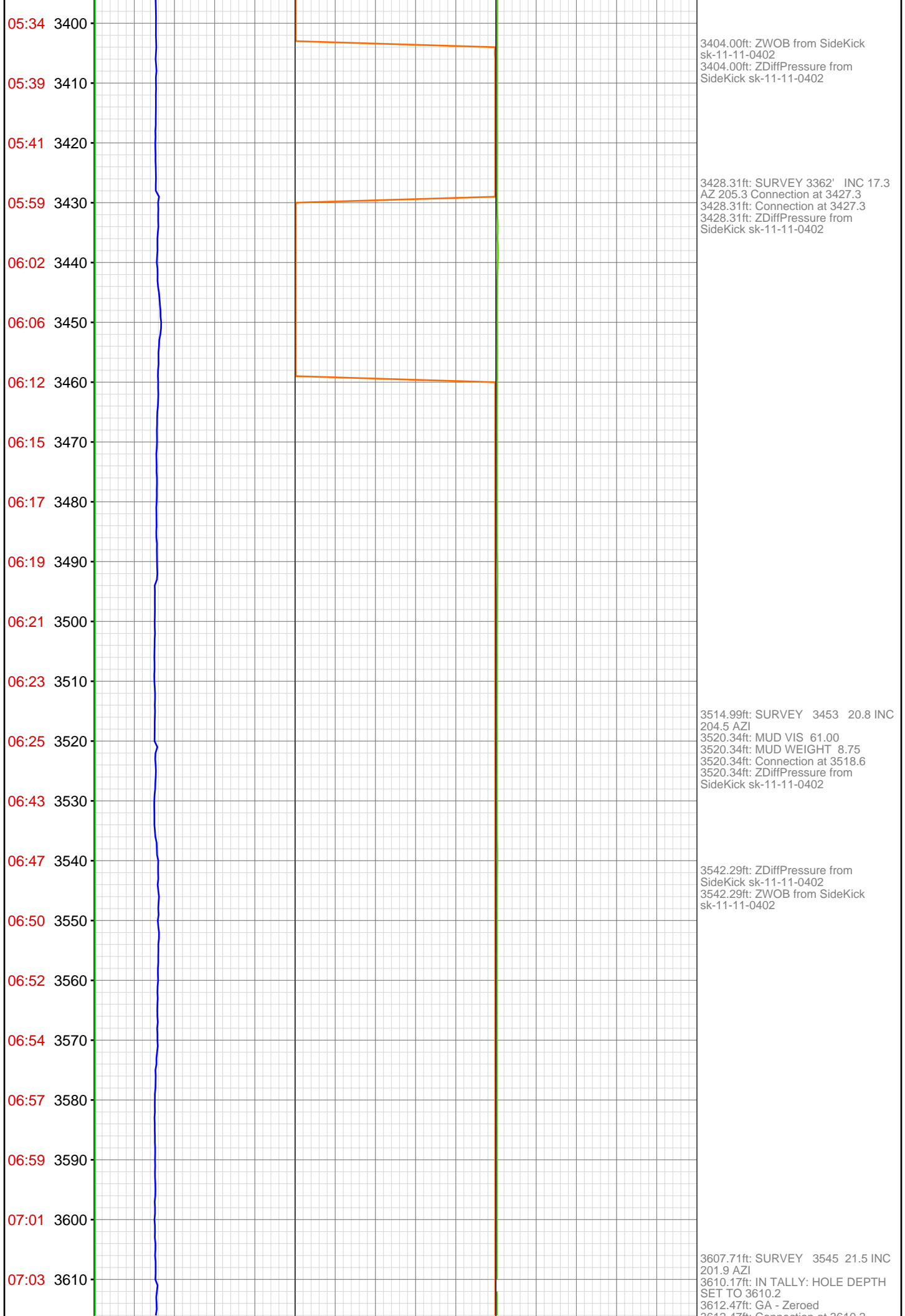
Tue Mar 27, 2012 11:56:12
Well Dossier 1332227840
Marilyn Tucker

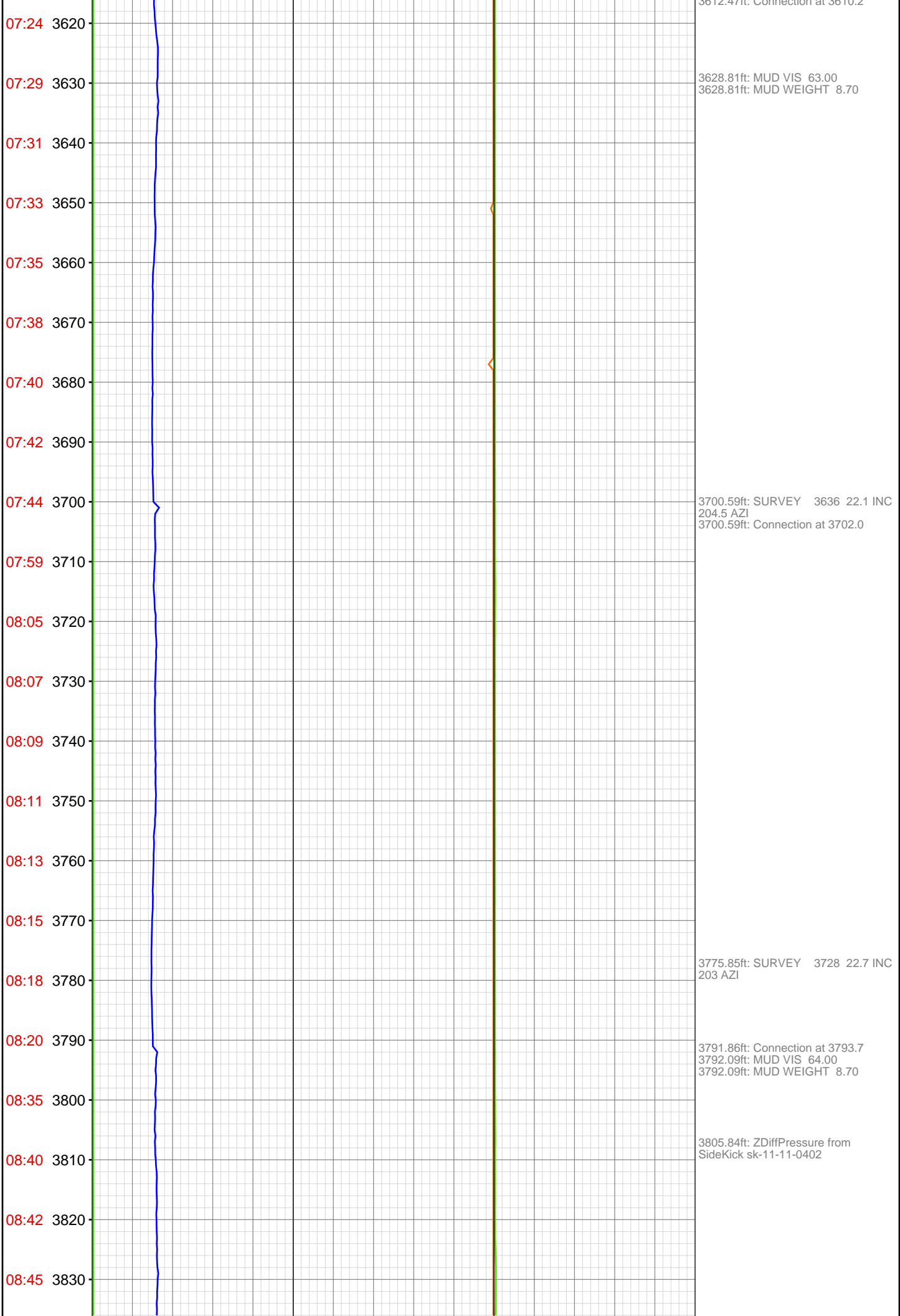
OPERATOR: EnCana Oil & Gas (USA), Inc.
WELL: SGWD11A-19 C19-495
FIELD:
LOCATION:
COUNTRY: USA
RIG: Pat-UTI 330

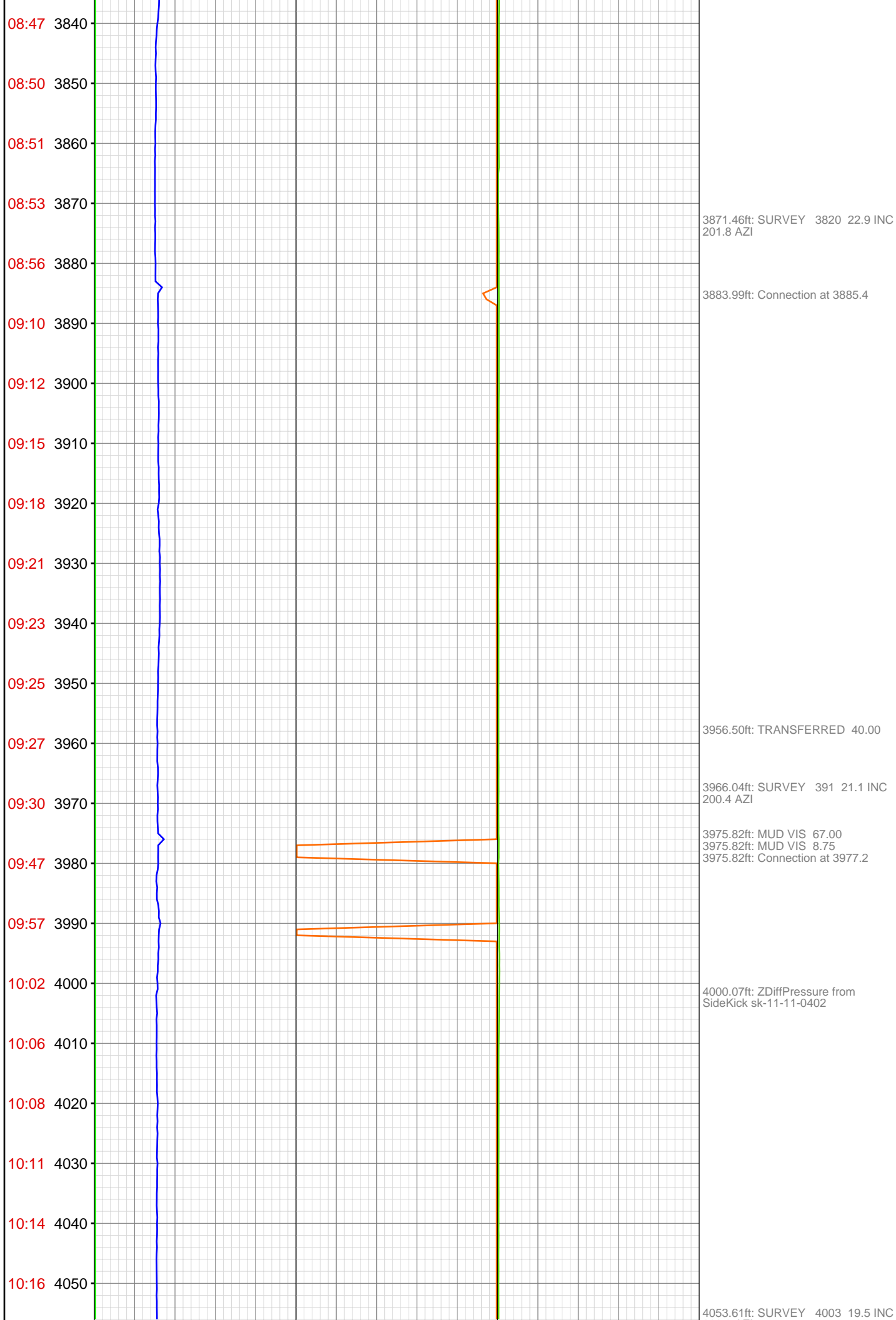
CONTRACTOR: Patterson-UTI Drilling Company
UNIQUE WELL ID: 05045211320000
SPUD DATE: Mar 21, 2012 00:00
RELEASE DATE: Mar 26, 2012 18:00

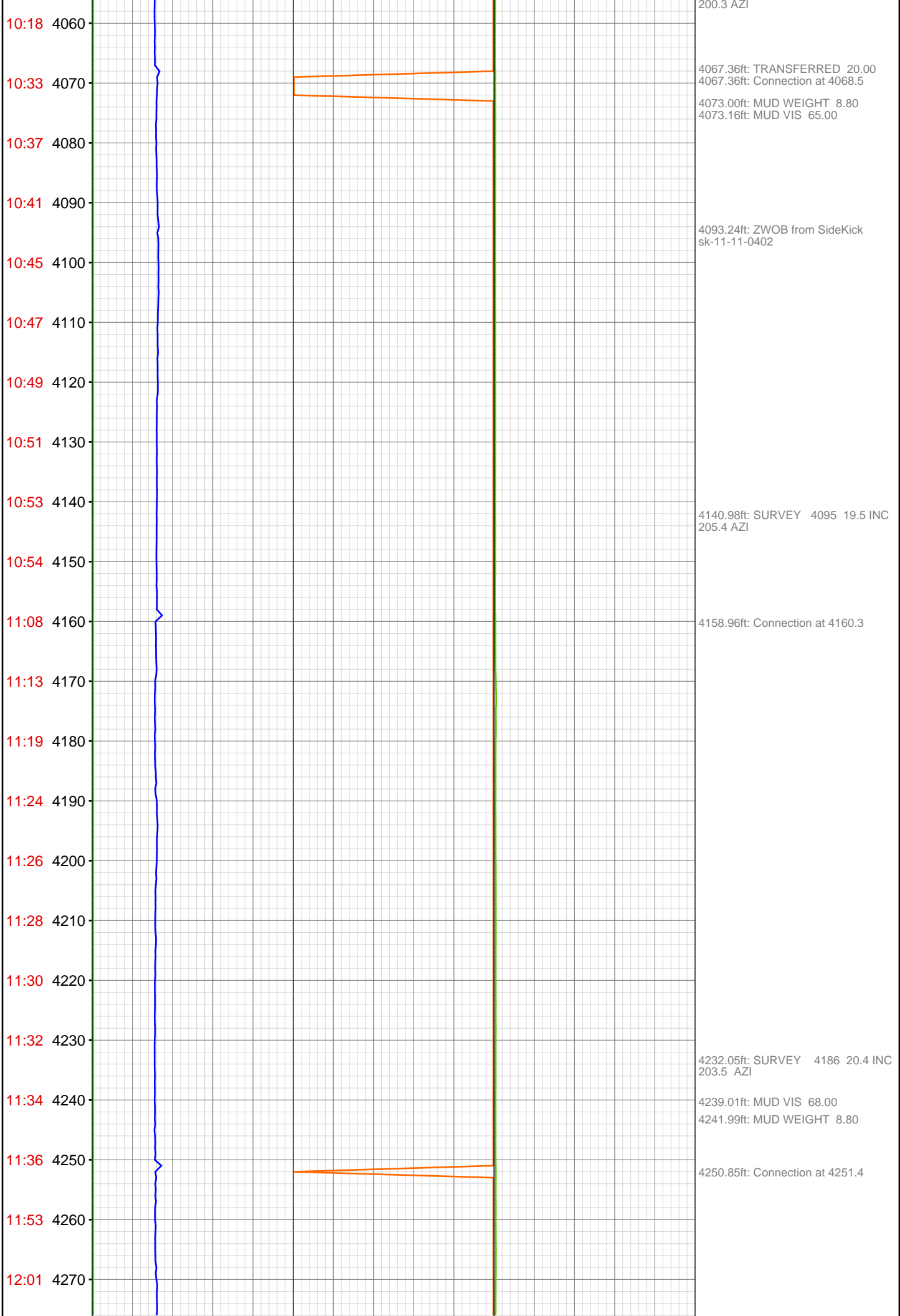




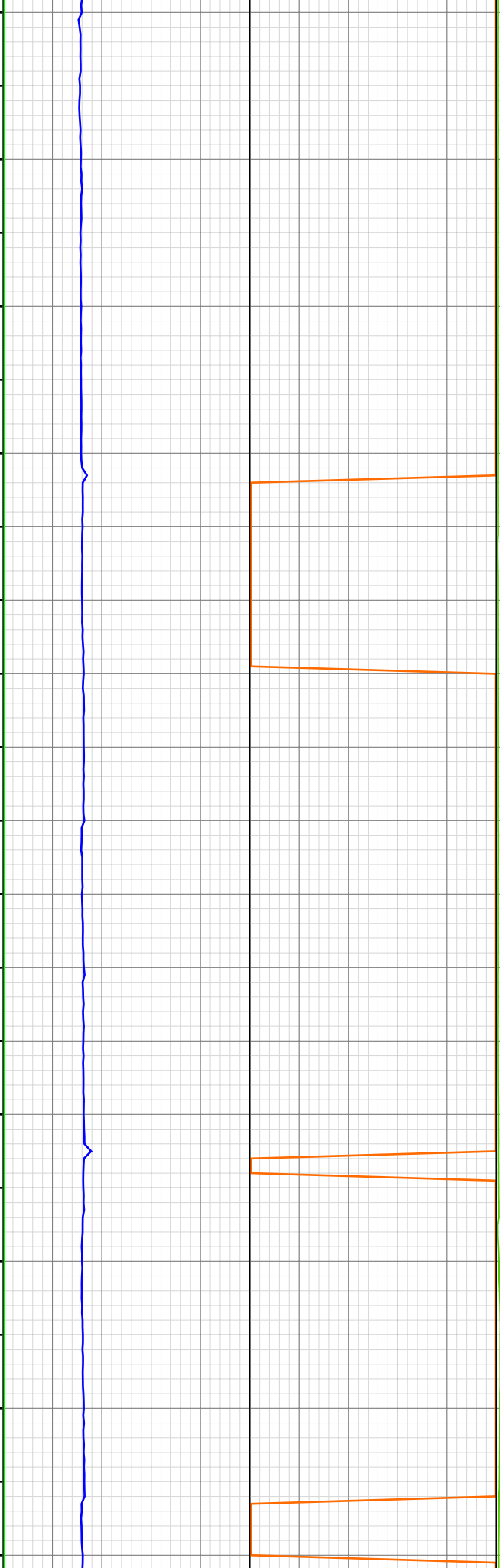








12:07 4280
12:09 4290
12:12 4300
12:14 4310
12:16 4320
12:18 4330
12:21 4340
12:36 4350
12:40 4360
12:45 4370
12:48 4380
12:58 4390
13:02 4400
13:08 4410
13:12 4420
13:14 4430
13:30 4440
13:34 4450
13:40 4460
13:42 4470
13:44 4480
13:59 4490



4332.15ft: SURVEY 4278 19.4 INC
207 AZI

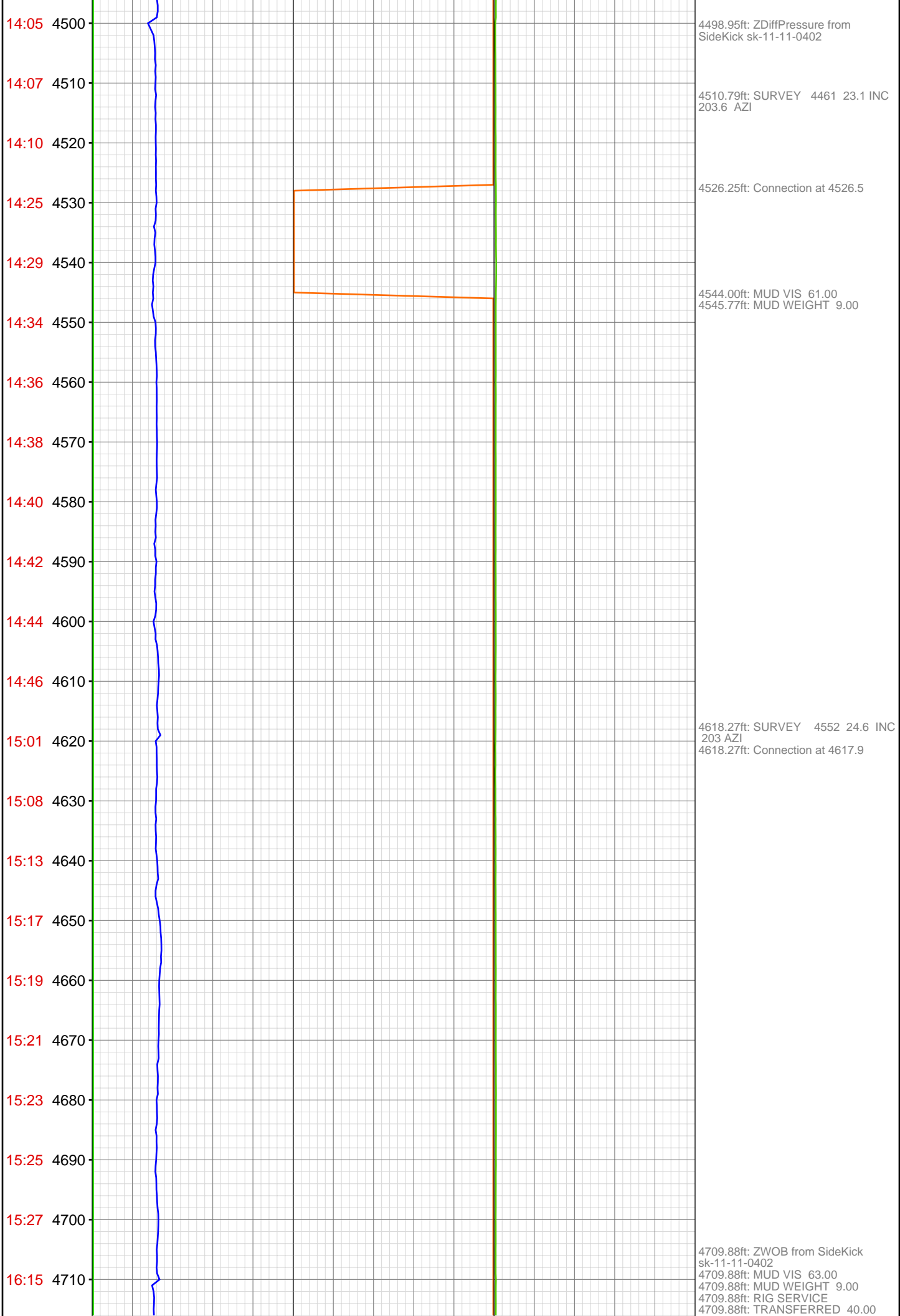
4342.29ft: Connection at 4343.2
4343.64ft: MUD VIS 68.00

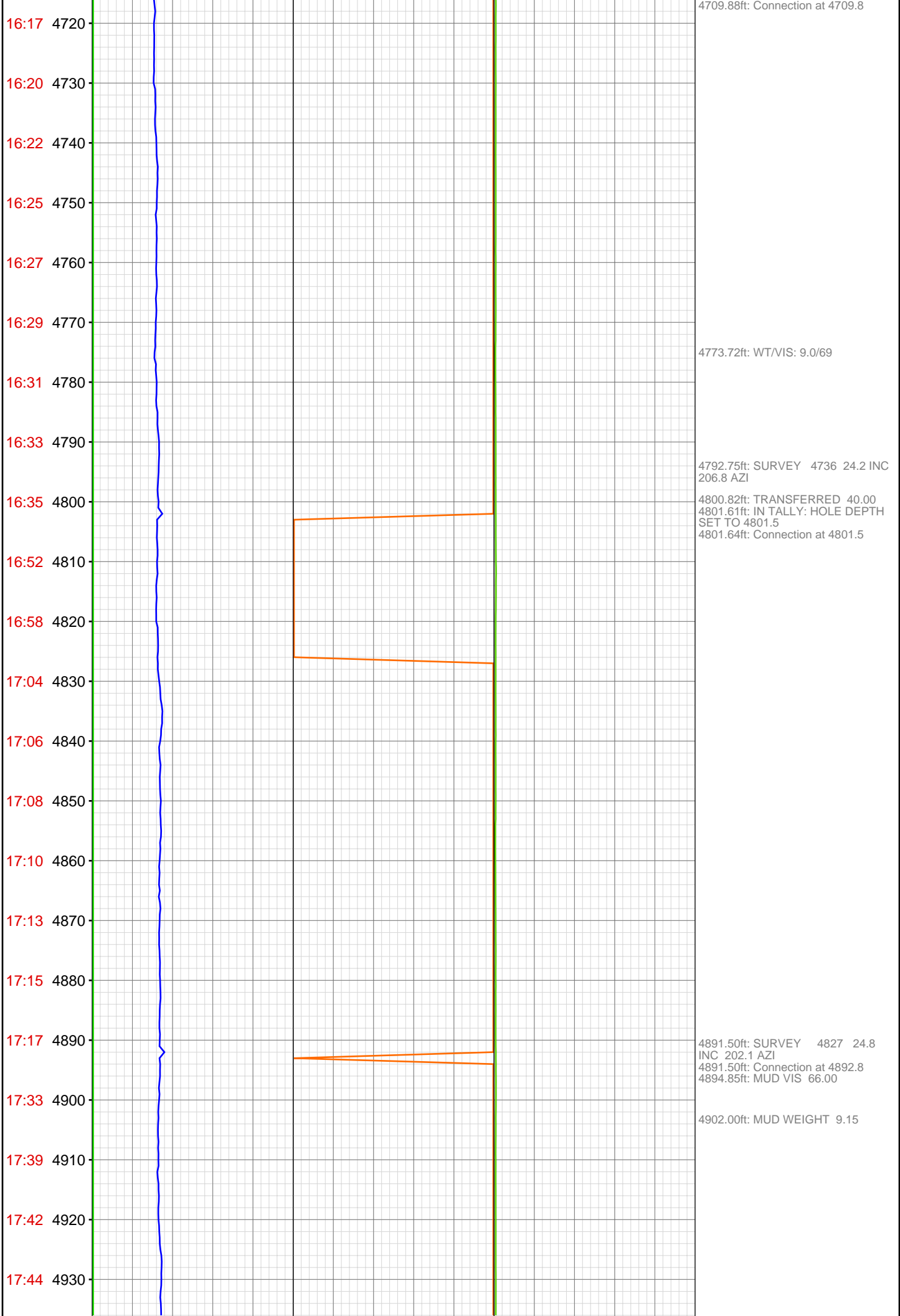
4347.51ft: MUD WEIGHT 8.85

4434.35ft: SURVEY 4369 20.0 INC
204.8 AZI
4434.35ft: Connection at 4435.0

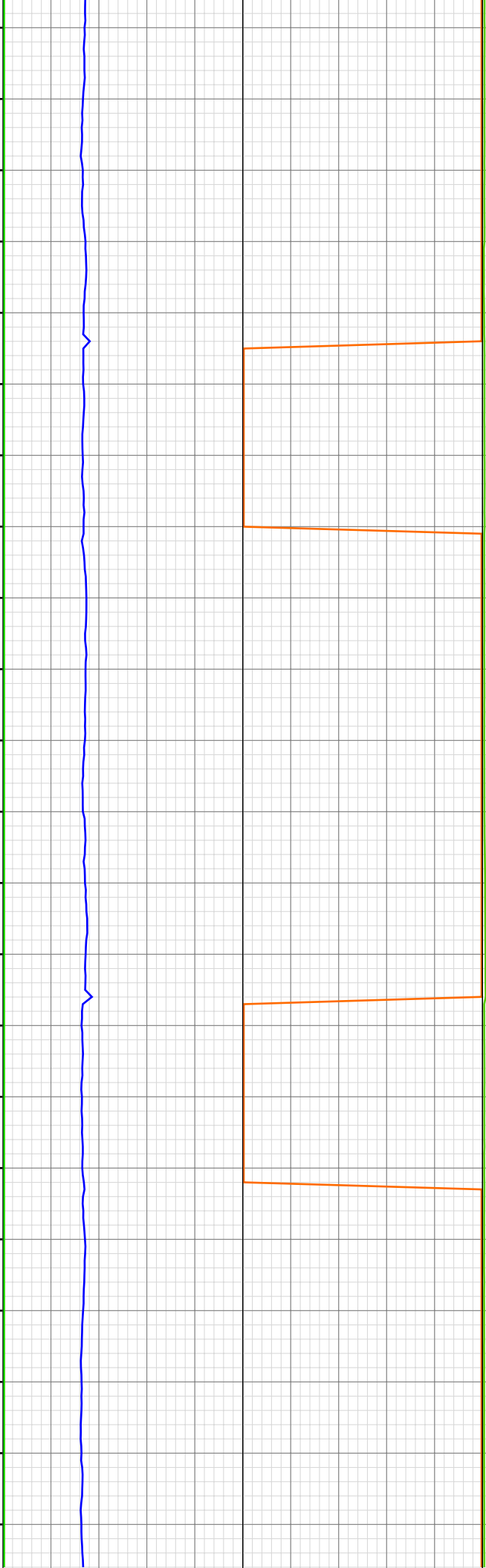
4445.08ft: MUD VIS 66.00

4450.46ft: MUD WEIGHT 8.90





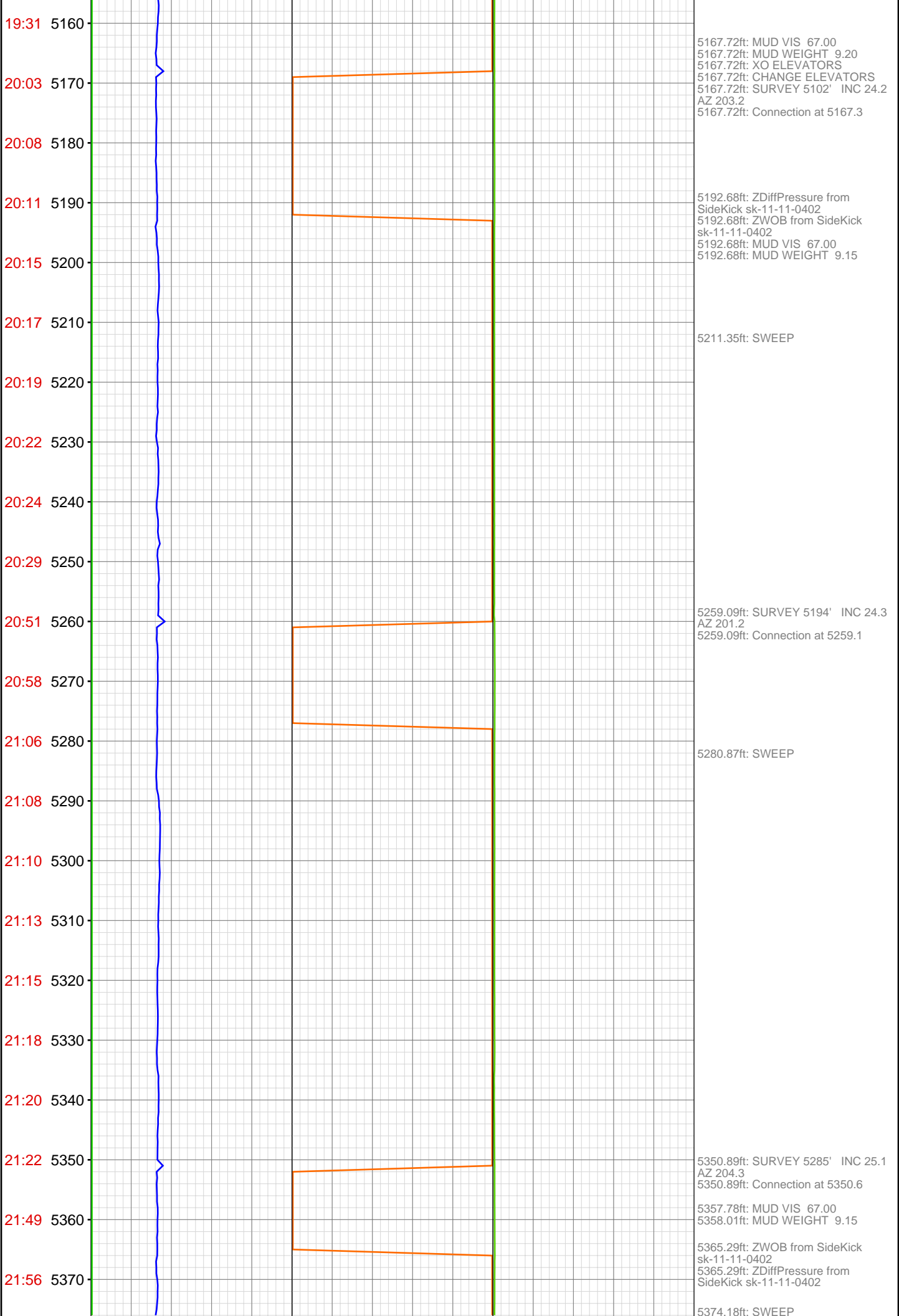
17:46 4940
17:48 4950
17:50 4960
17:53 4970
17:55 4980
18:12 4990
18:16 5000
18:20 5010
18:26 5020
18:28 5030
18:30 5040
18:32 5050
18:34 5060
18:36 5070
19:05 5080
19:08 5090
19:14 5100
19:22 5110
19:24 5120
19:26 5130
19:28 5140
19:29 5150

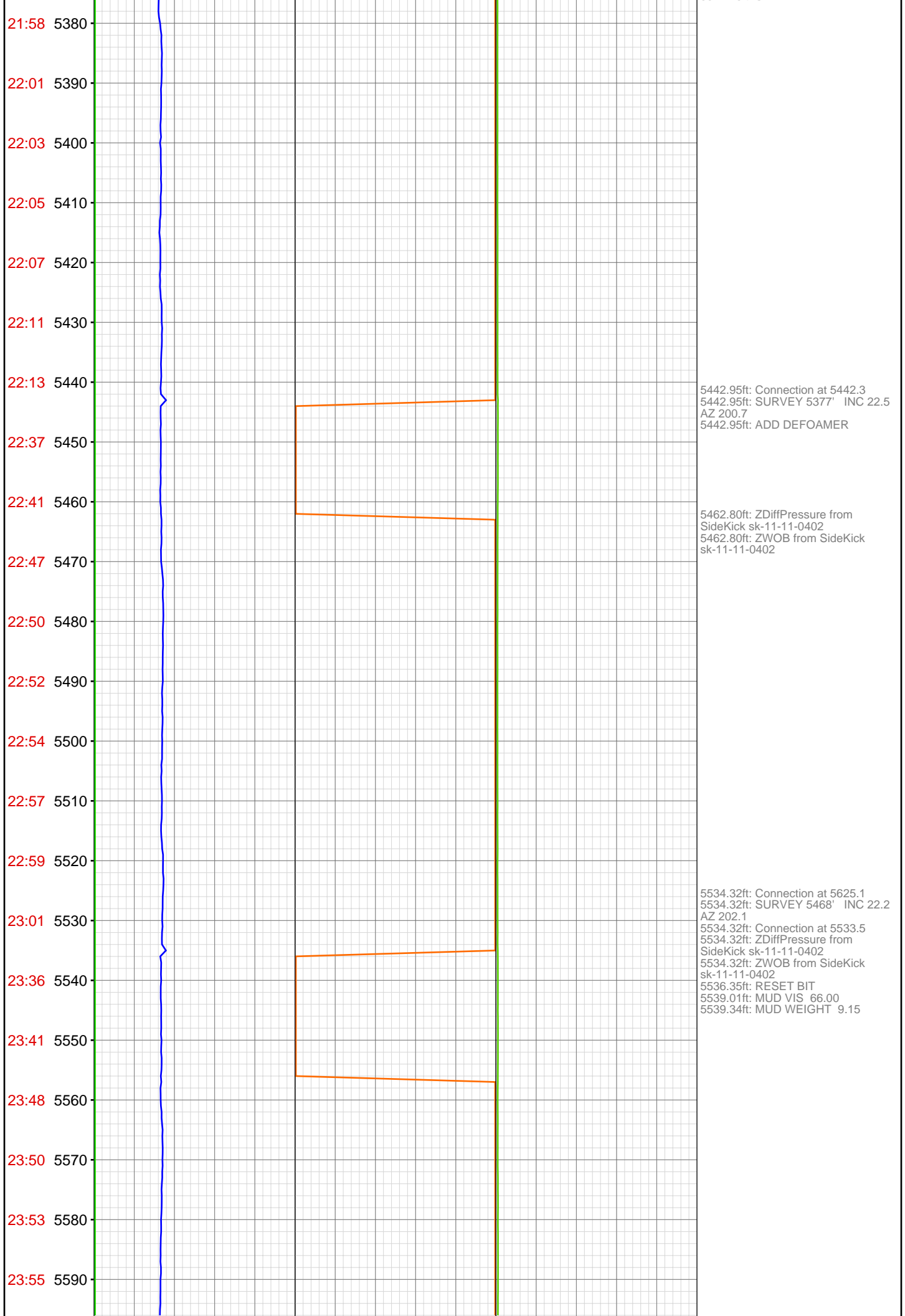


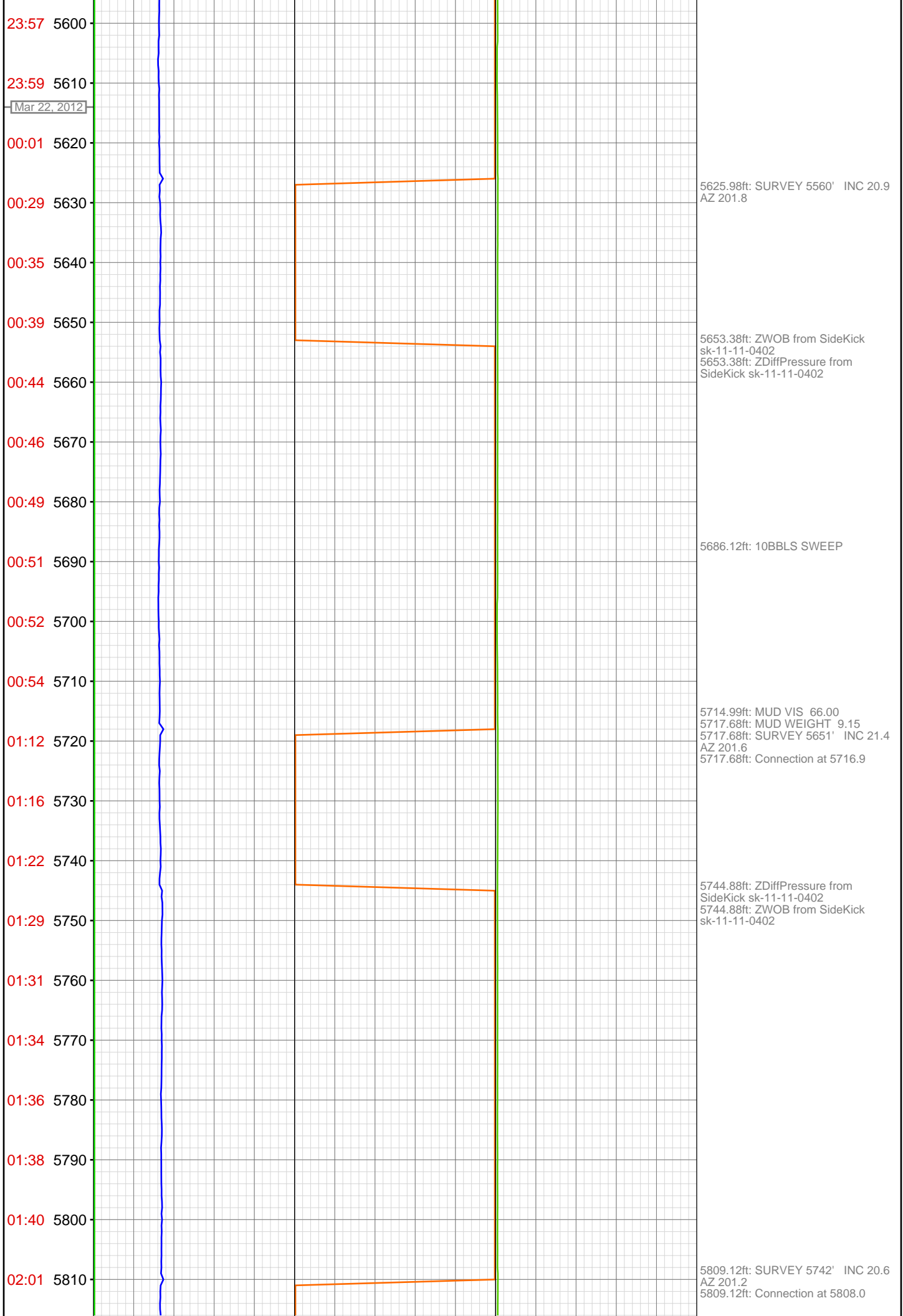
4983.46ft: SURVEY 4829' INC 24.0
AZ 200.4
4983.46ft: Connection at 4984.3

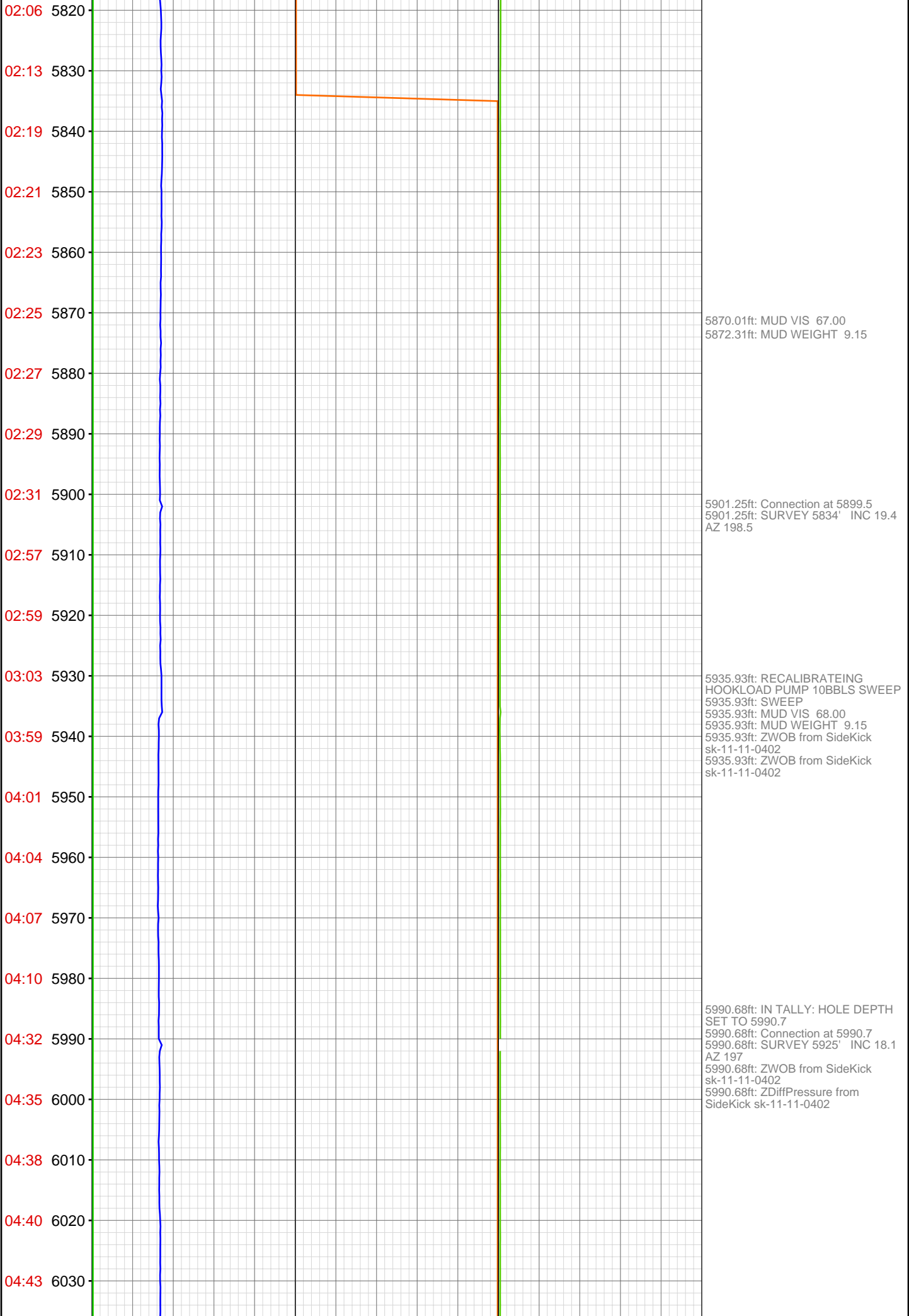
5075.66ft: SURVEY 5010' INC 23.8
AZ 200.7
5075.66ft: Connection at 5075.8
5075.66ft: MUD VIS 9.20
5075.66ft: CORRECTION MUD WT
9.2 VIS 68

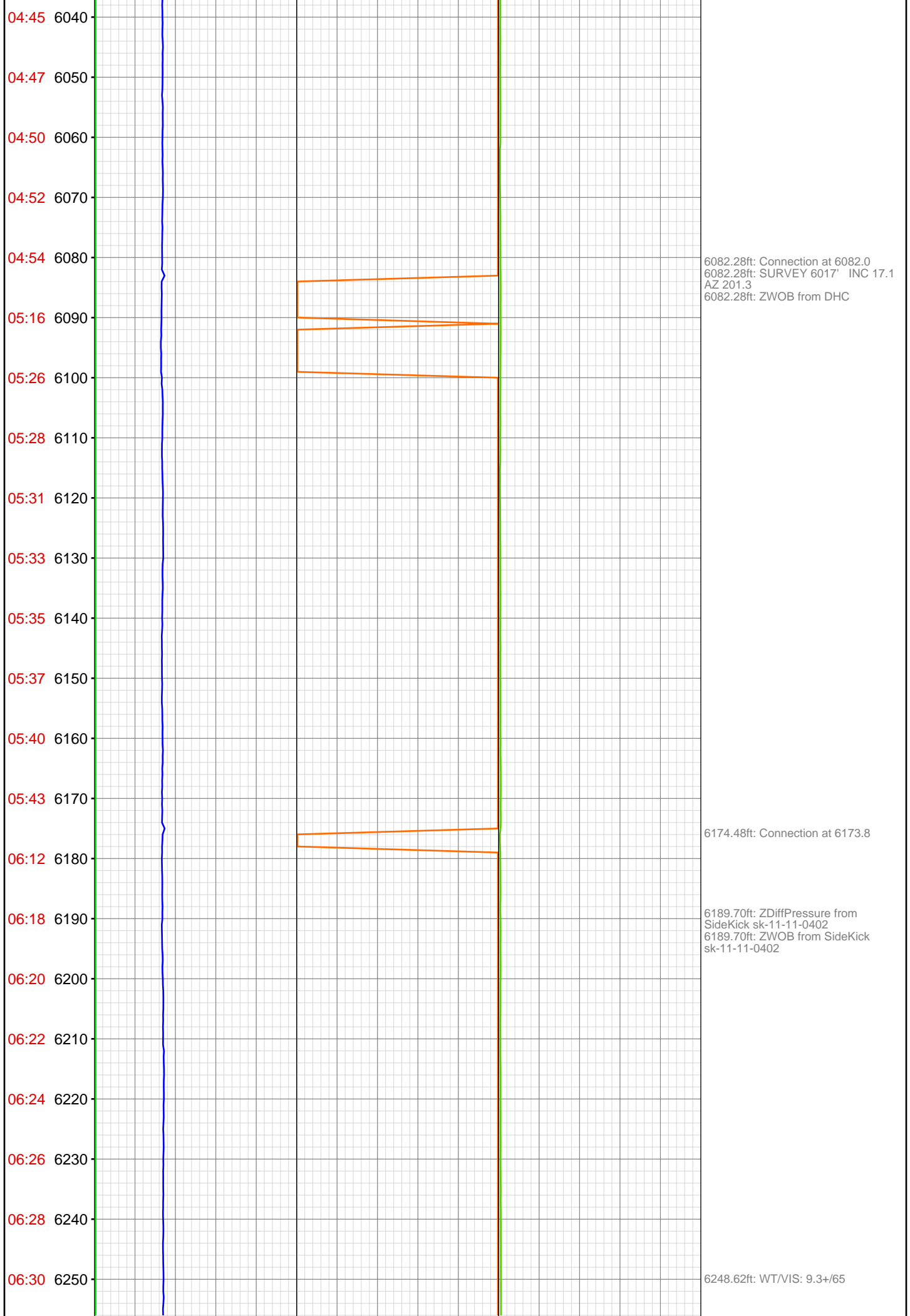
5102.07ft: ZWOB from SideKick
sk-11-11-0402











06:32 6260
06:47 6270
06:52 6280
06:55 6290
06:57 6300
06:59 6310
07:01 6320
07:04 6330
07:06 6340
07:08 6350
07:23 6360
07:29 6370
07:33 6380
07:36 6390
07:38 6400
07:40 6410
07:41 6420
07:44 6430
07:46 6440
08:02 6450
08:04 6460
08:07 6470

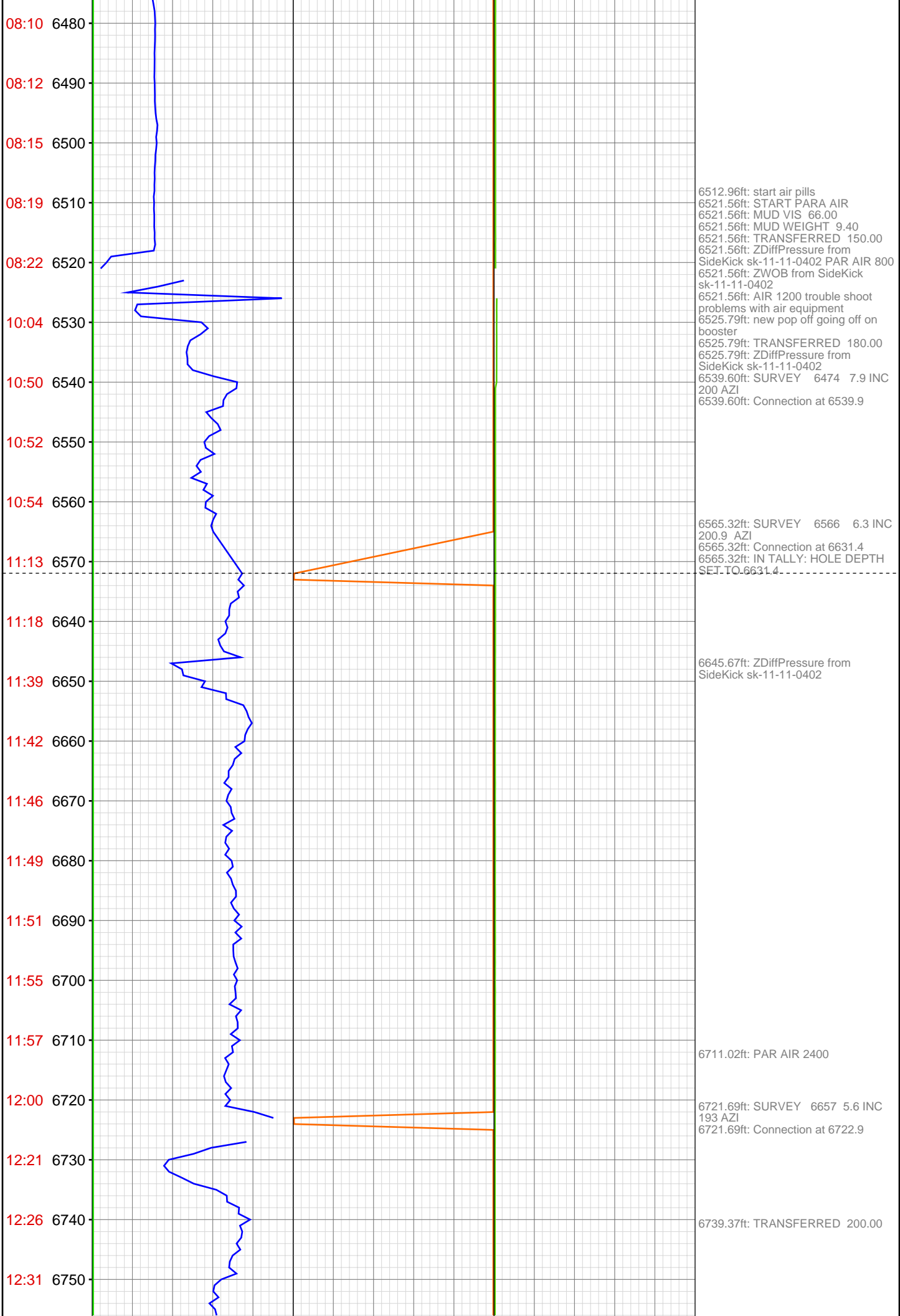
6265.55ft: Connection at 6265.3
6265.91ft: IN TALLY: HOLE DEPTH
SET TO 6265.3
6268.01ft: SURVEY 6200' 13.5 197.4

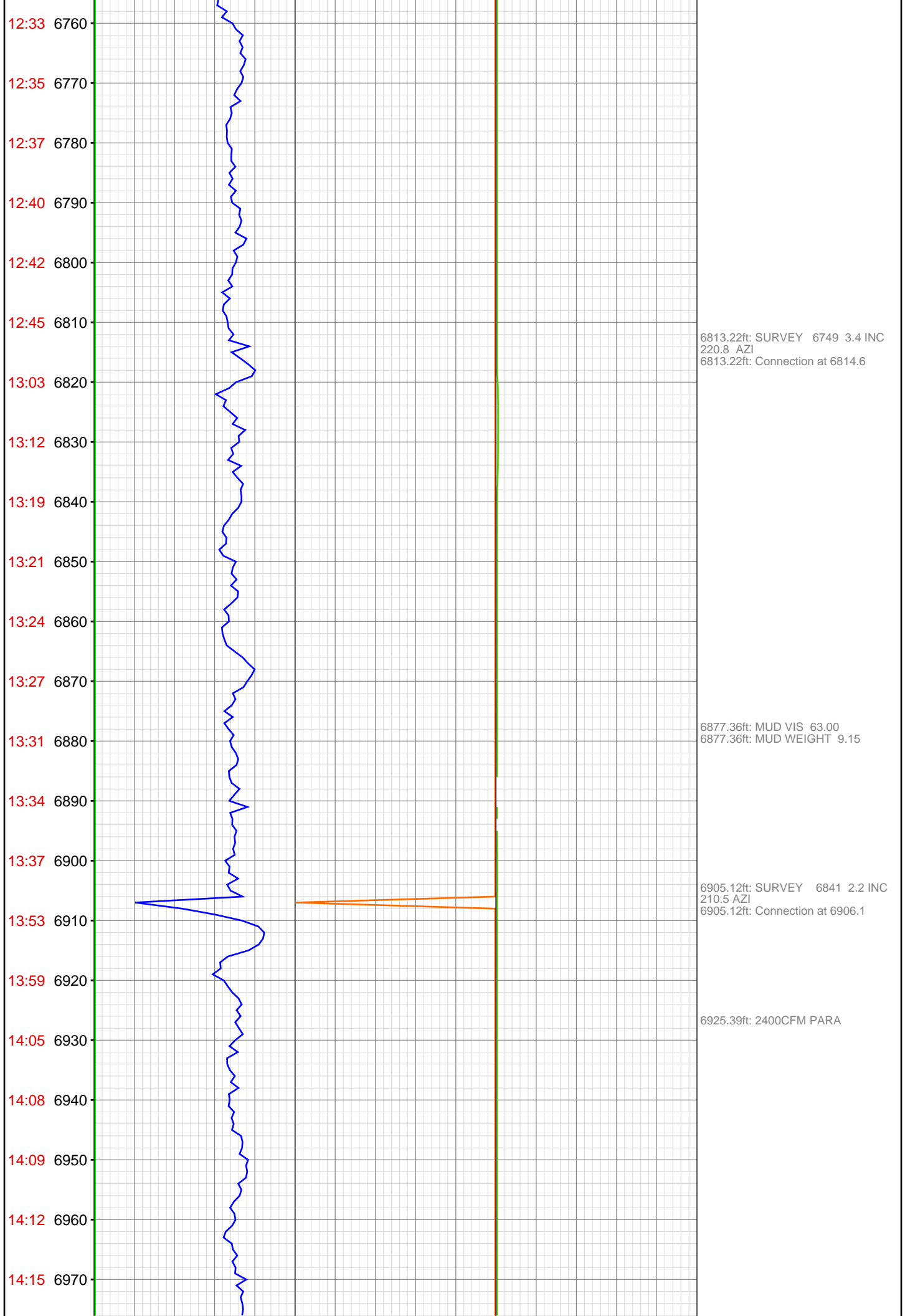
6356.10ft: SURVEY 6291 10.8 INC
203.2 AZI
6356.10ft: Connection at 6356.9

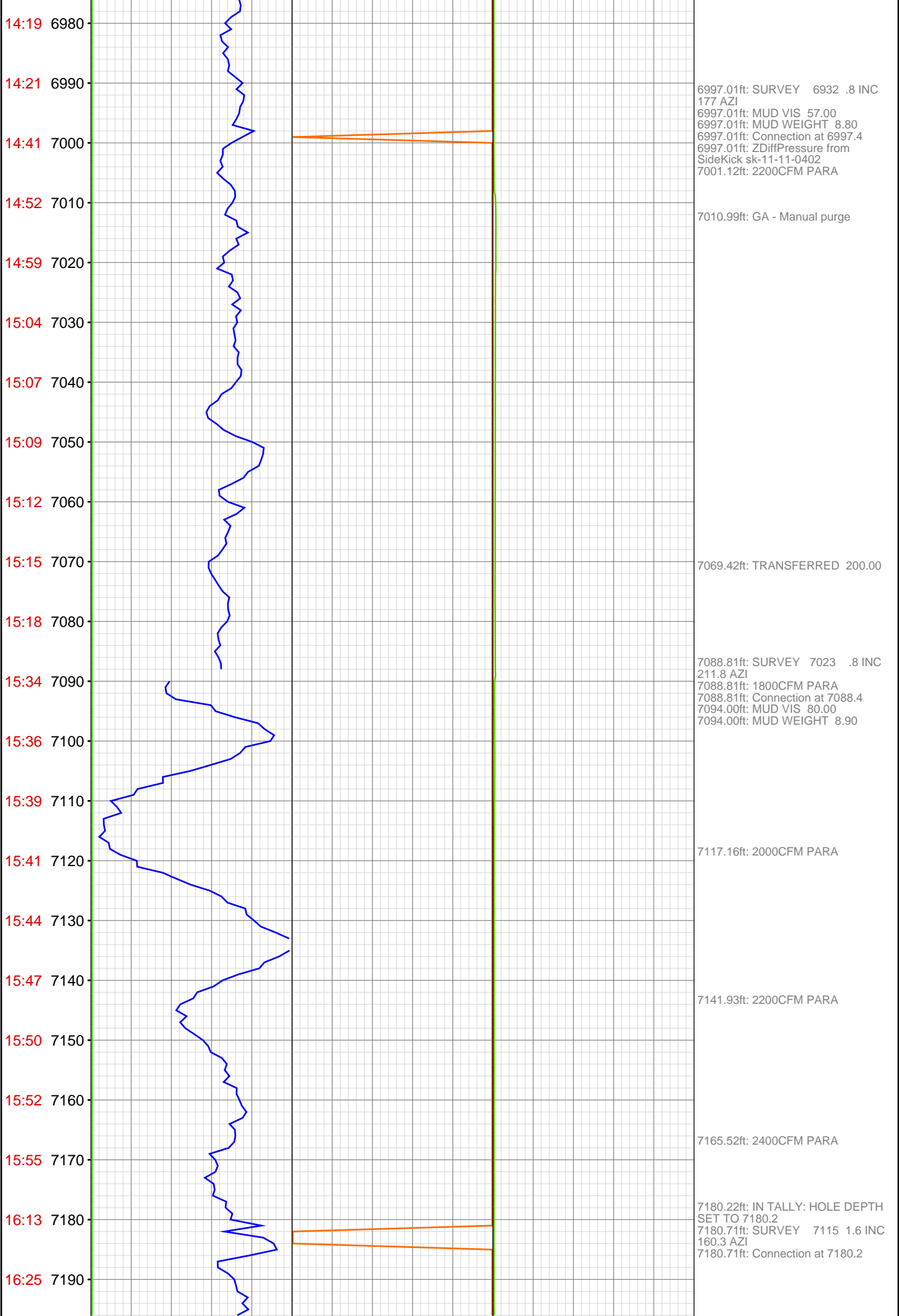
6374.97ft: MUD VIS 65.00
6375.43ft: MUD WEIGHT 9.40

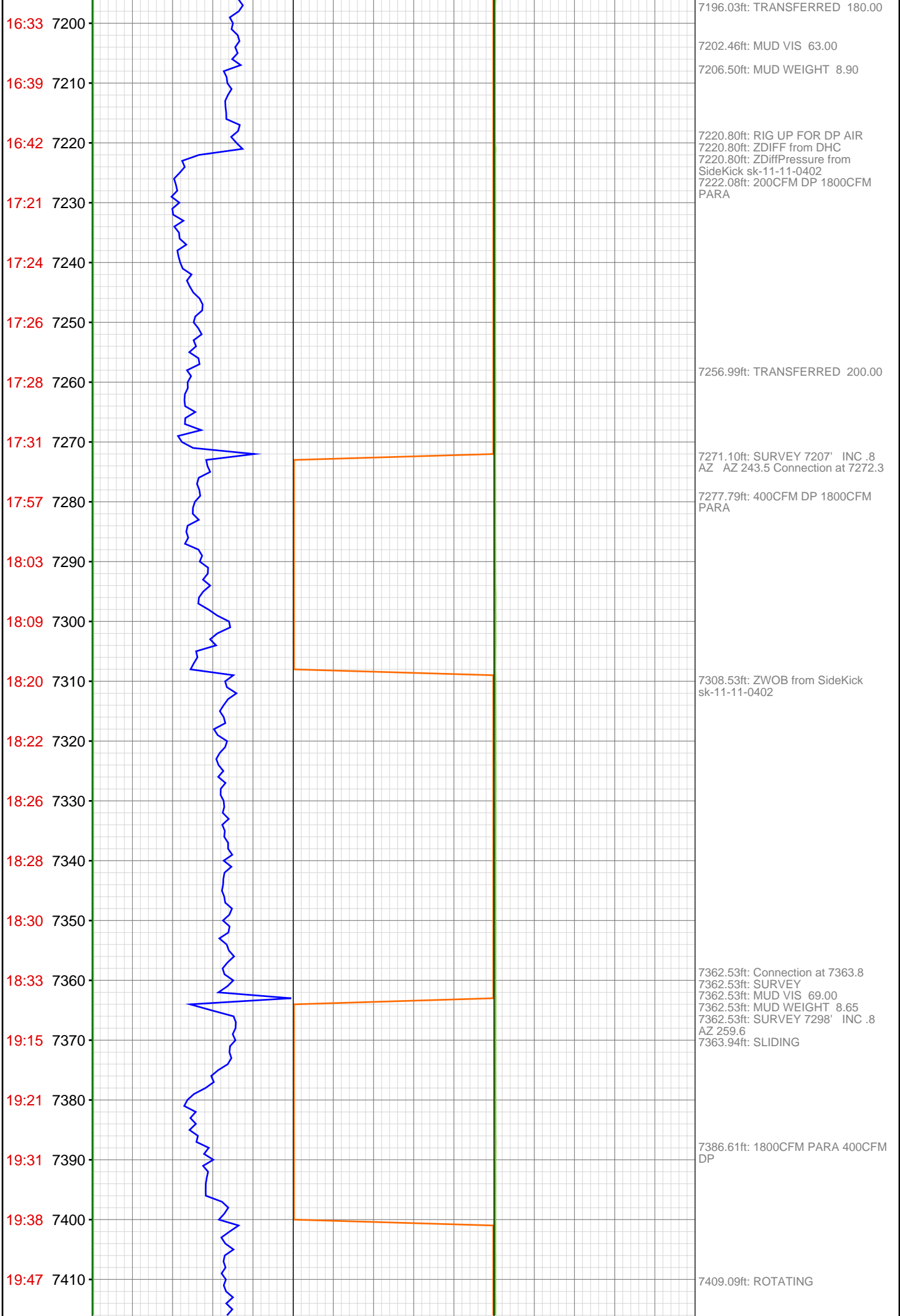
6399.87ft: TRANSFERRED 60.00

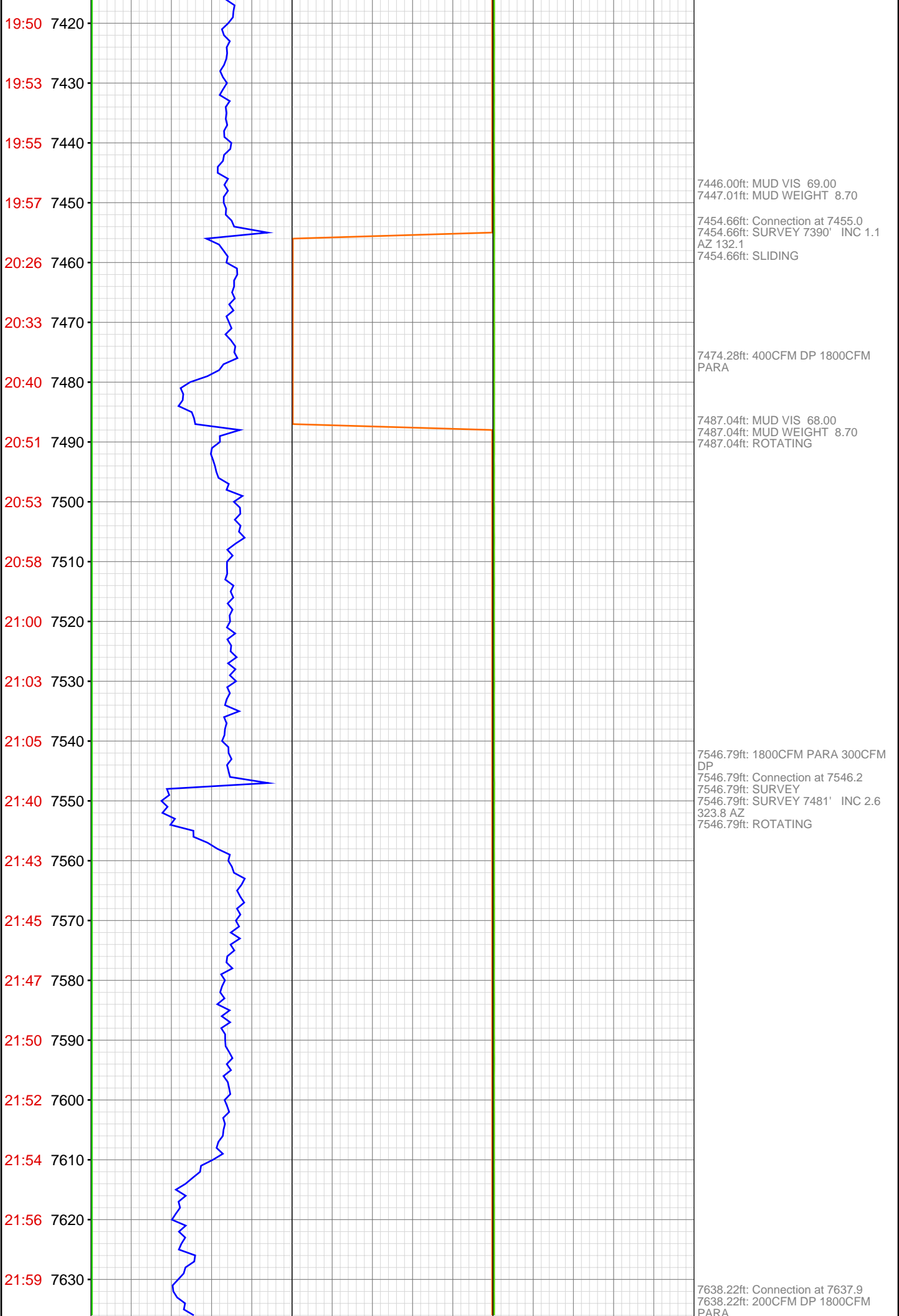
6448.13ft: SURVEY 6383 8.4 INC
194.3 AZI
6448.13ft: ZDiffPressure from
SideKick sk-11-11-0402
6448.13ft: ZWOB from SideKick
sk-11-11-0402
6449.57ft: Connection at 6448.5



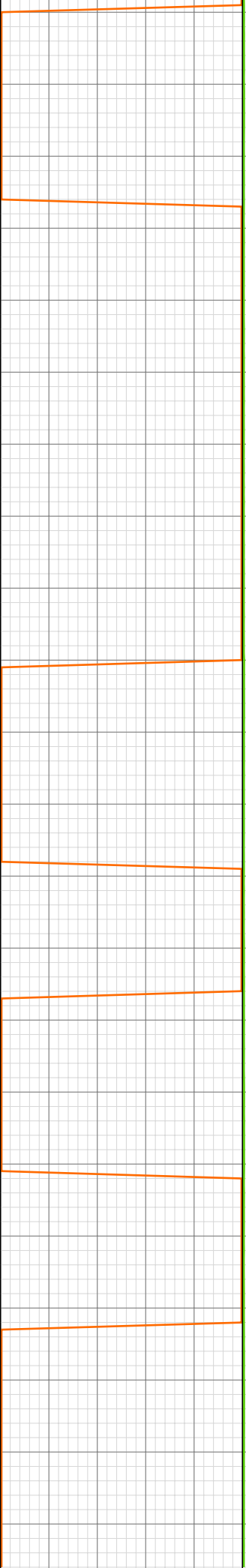
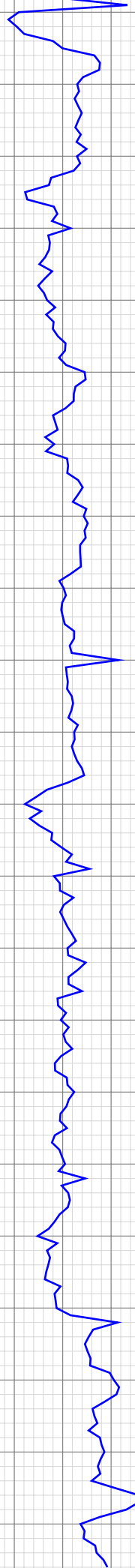








22:33 7640
22:40 7650
22:46 7660
22:56 7670
22:59 7680
23:02 7690
23:04 7700
23:06 7710
23:10 7720
23:39 7730
23:48 7740
23:57 7750
Mar 23, 2012
00:09 7760
00:13 7770
00:28 7780
00:34 7790
00:40 7800
00:47 7810
00:49 7820
01:32 7830
01:41 7840
01:50 7850



7638.22ft: SURVEY
7638.22ft: MUD VIS 64.00
7638.22ft: MUD WEIGHT 8.70
7638.22ft: SURVEY 7572' INC 2.2
AZ 216.3
7638.22ft: SLIDING

7666.21ft: ZDiffPressure from
SideKick sk-11-11-0402

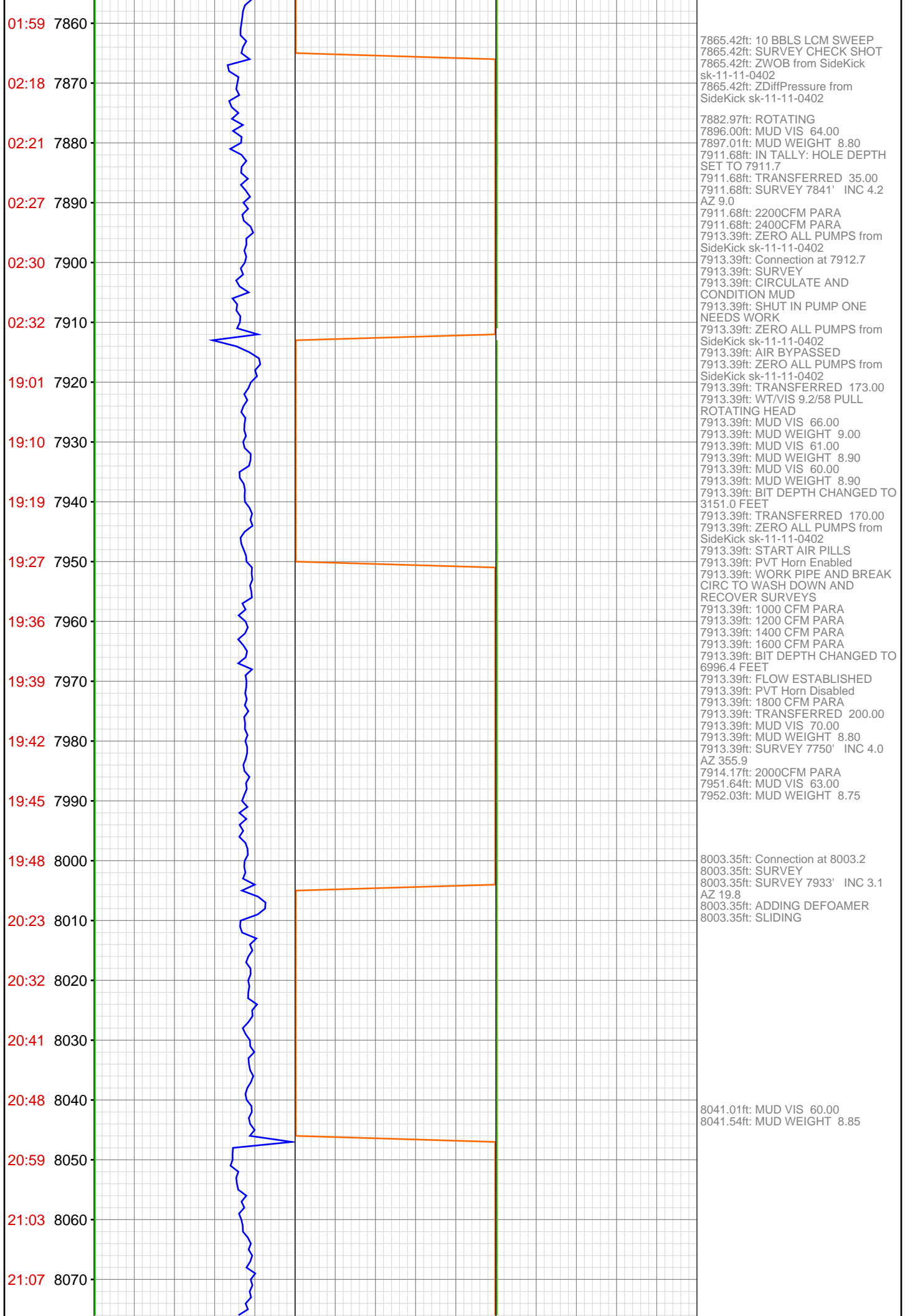
7672.18ft: ROTATING

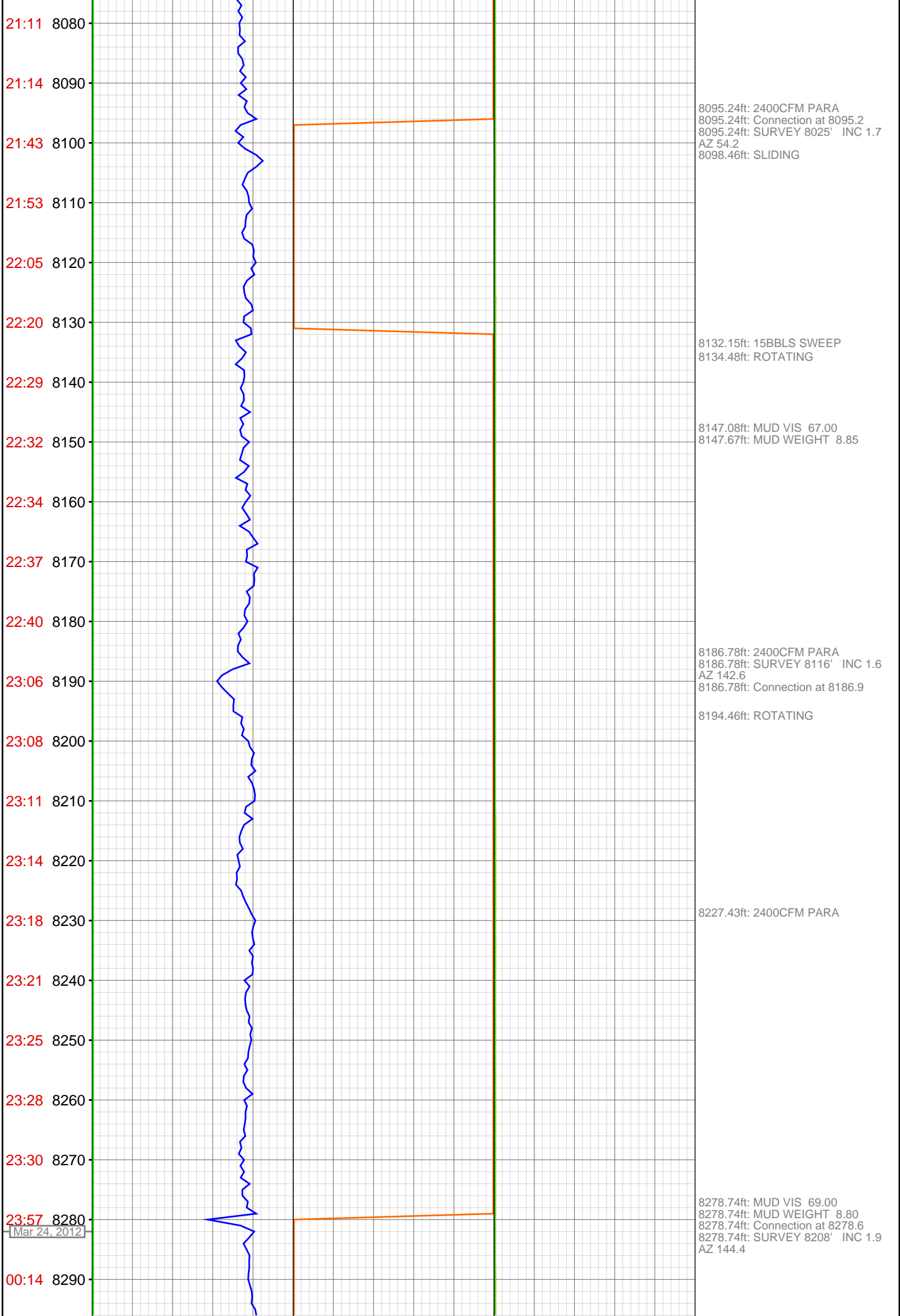
7729.76ft: 100CFM DP 1800CFM
PARA
7729.76ft: Connection at 7729.5
7729.76ft: SURVEY 7664' INC 3.2
AZ 245.2
7729.76ft: SLIDING
7729.99ft: MUD VIS 66.00
7730.35ft: MUD WEIGHT 8.75

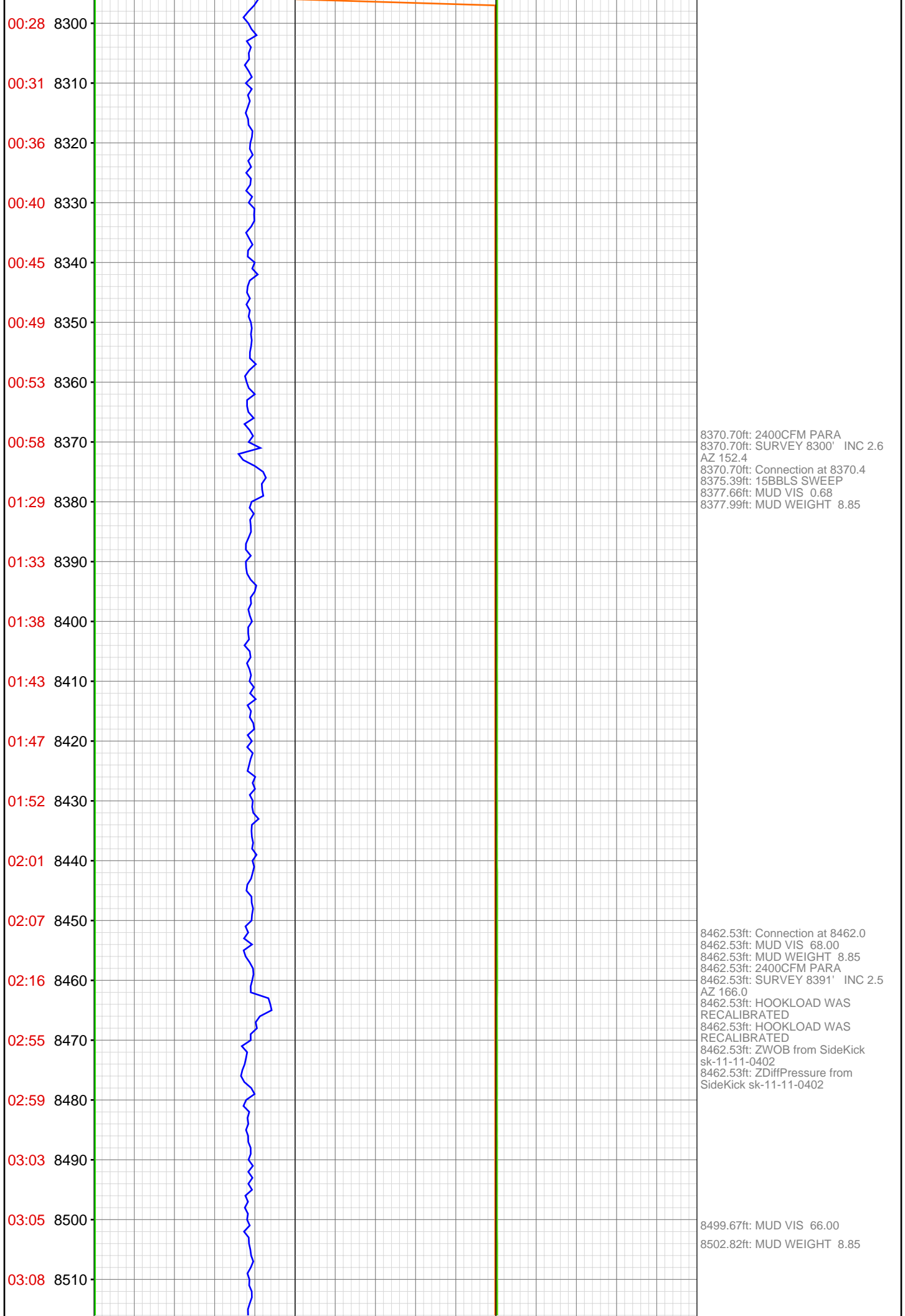
7760.17ft: ROTATING

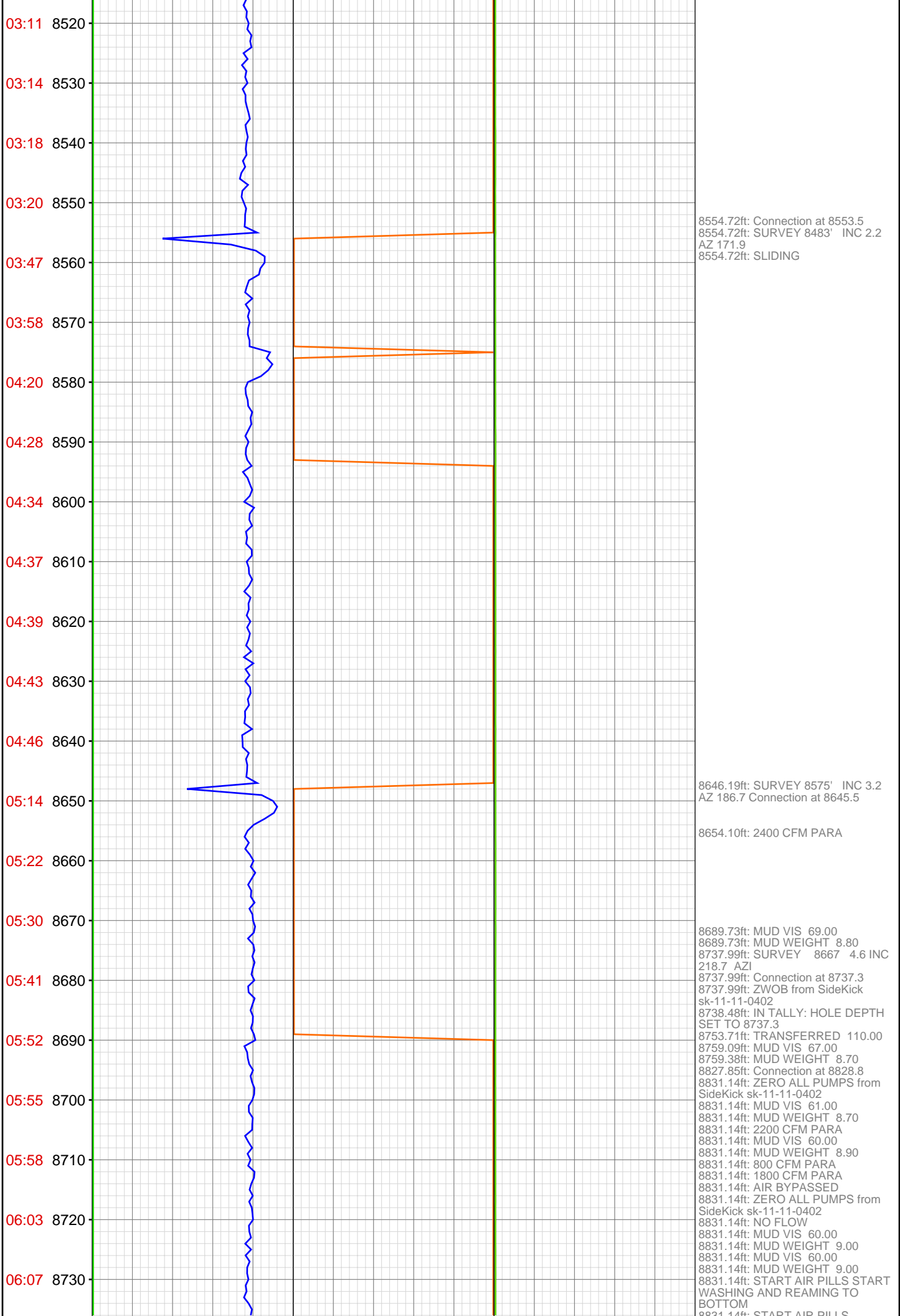
7775.69ft: SLIDING

7813.29ft: TRANSFERRED 165.00
7821.36ft: DP AIR OFF
7821.36ft: ZERO ALL PUMPS from
SideKick sk-11-11-0402
7821.36ft: SURVEY 7756' INC 3.9
AZ 354.2 Connection at 7821.0
7821.36ft: 2000CFM PARA
7821.36ft: SLIDING
7824.18ft: 2200CFM PARA
7828.74ft: 2400CFM PARA

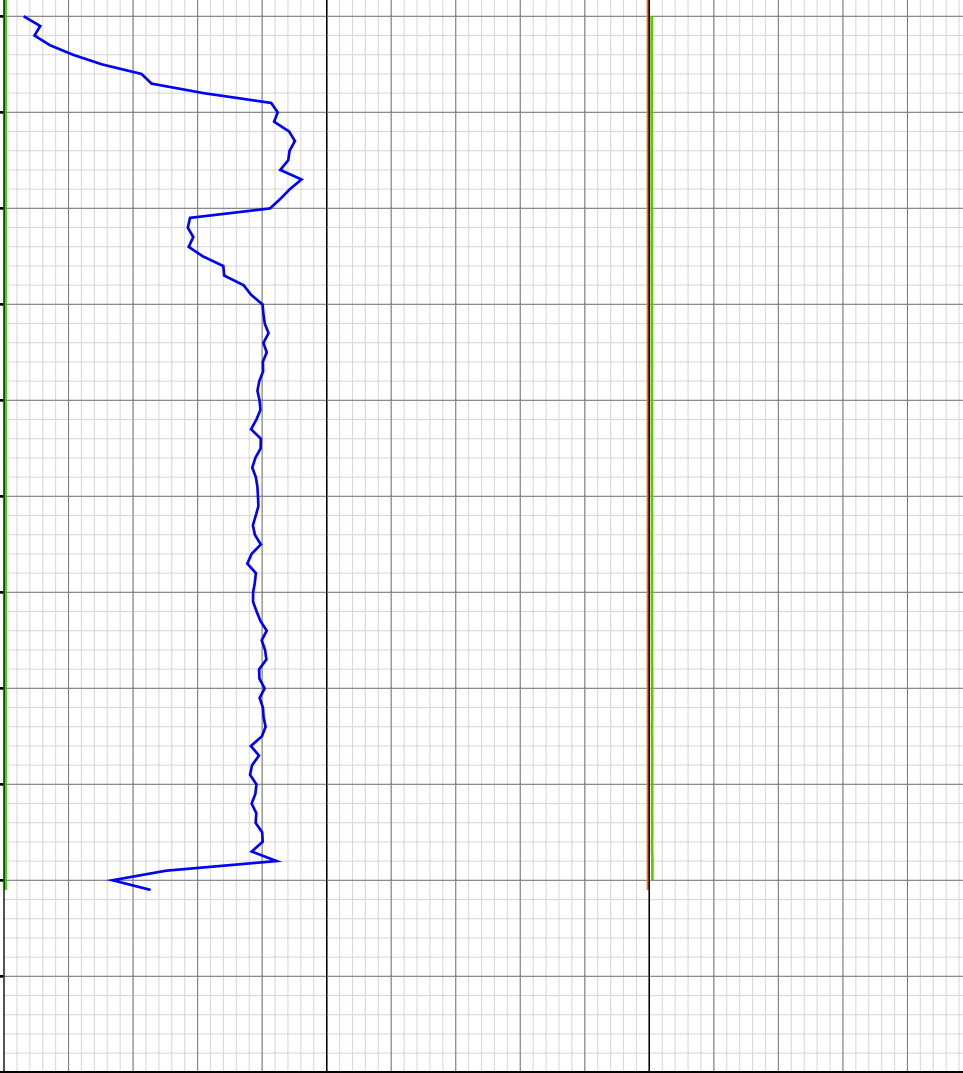








06:26 8740
06:29 8750
06:38 8760
06:42 8770
06:47 8780
06:50 8790
06:53 8800
07:00 8810
07:05 8820
8830
8840



8831.14ft: START AIR PILLS
8831.14ft: TRANSFERRED 200.00
8831.14ft: 1000 CFM PARA
8831.14ft: 1400 CFM PARA
8831.14ft: 1200 CFM PARA
8831.14ft: AIR BYPASSED
8831.14ft: MUD VIS 60.00
8831.14ft: MUD WEIGHT 8.90
8831.14ft: MUD VIS 0.56
8831.14ft: MUD WEIGHT 8.70
8831.14ft: PULL ROTATING HEAD
8831.14ft: 10-4
8831.14ft: LAYDOWN HWDP
8831.14ft: XO ELEVATORS
8831.14ft: PULL WEAR BUSHING
8831.14ft: XO ELEVATORS AND BELLS
8831.14ft: RIG UP CASERS
8831.14ft: HSM
8831.14ft: MAKE UP SHOE FLOAT COLLAR ECT AND RUN CASING
8831.14ft: BIT DEPTH CHANGED TO 1228.0 FEET
8831.14ft: BIT DEPTH CHANGED TO 1872.0 FEET
8831.14ft: ZERO ALL PUMPS from SideKick sk-11-11-0402
8831.14ft: STAB TAWG TOOL + PUMP 20 BBLS TO CHECK TOOL
8831.14ft: ZERO ALL PUMPS from SideKick sk-11-11-0402
8831.14ft: TRANSFERRED 150.00
8831.14ft: START AIR PILLS
8831.14ft: 800 CFM PARA
8831.14ft: 400 CFM PARA
8831.14ft: 200 CFM PARA
8831.14ft: TRANSFERRED 200.00
8831.14ft: START AIR PILLS
8831.14ft: 100 CFM PARA
8831.14ft: 200 CFM PARA
8831.14ft: 400 CFM PARA
8831.14ft: 200 CFM PARA
8831.14ft: 100 CFM PARA
8831.14ft: RIG DOWN
8831.14ft: CASERS-PU/CEMENT HEAD
8831.14ft: CIRCULATE THROUGH CEMENT HEAD
8831.14ft: 100CFM PARA
8831.14ft: AIR BYPASSED
8831.14ft: START AIR PILLS AIR ON PARASITE
8831.14ft: AIR BYPASSED
8831.14ft: AIR ON PARASITE
8831.14ft: 400CFM PARA
8831.14ft: 800CFM PARA
8831.14ft: AIR BYPASSED
8831.14ft: ZERO ALL PUMPS from SideKick sk-11-11-0402