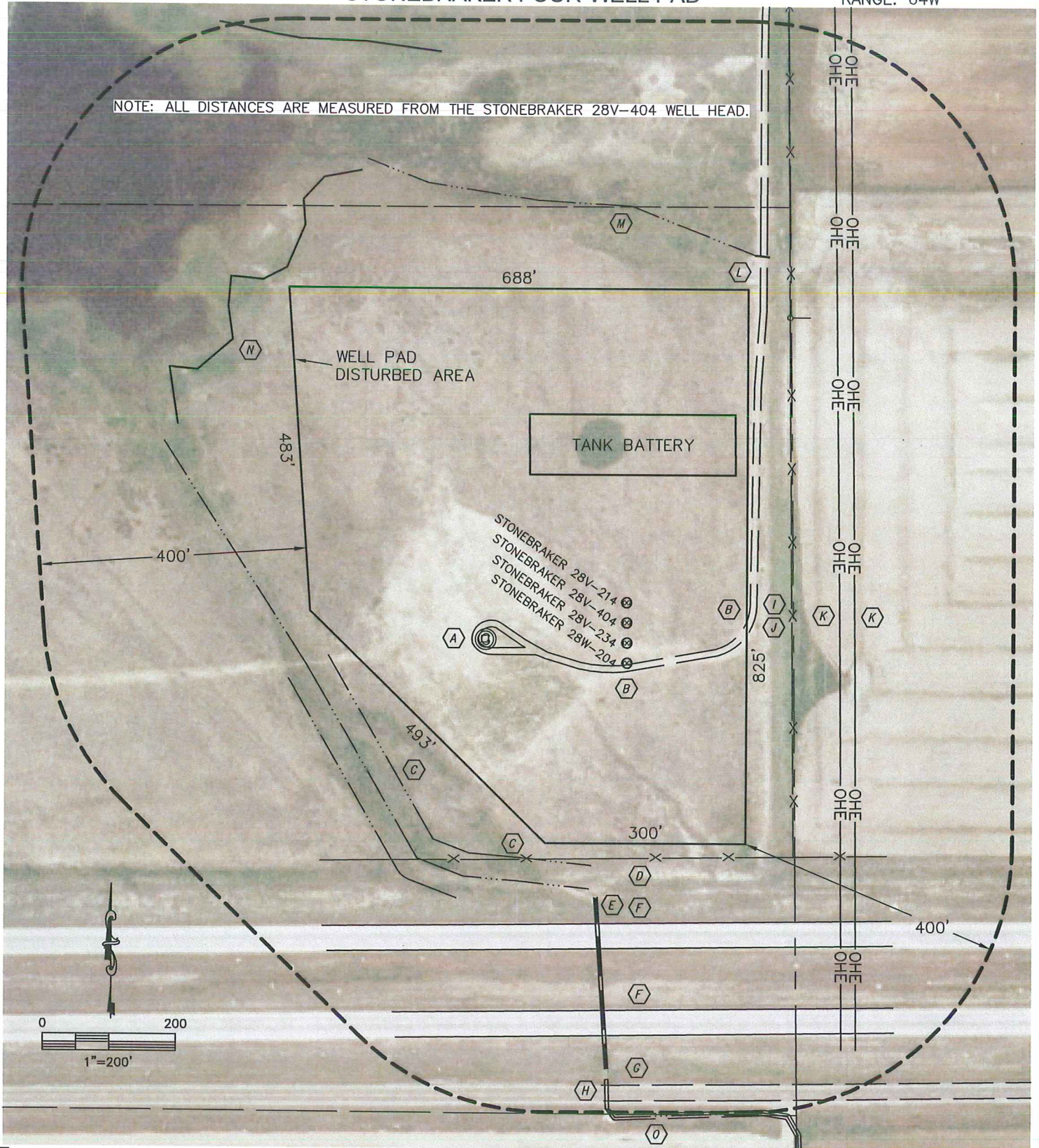


LOCATION DRAWING
STONEBRAKER FOUR-WELL PAD

SECTION: 28
TOWNSHIP: 2N
RANGE: 64W

NOTE: ALL DISTANCES ARE MEASURED FROM THE STONEBRAKER 28V-404 WELL HEAD.



- A EXISTING WELL—STONEBRAKER 42-28 212' WEST
- B NEAR EDGE WELL ROAD 61' SOUTH, 180' EAST
- C TOE OF DRAINAGE SWALE 411' SOUTHWEST, 364' SOUTH
- D FENCE & PROPERTY LINE 350' SOUTH
- E 60" REINFORCED CONCRETE PIPE (RCP) 411' SOUTH
- F NEAR EDGE CONCRETE LANE OF I-76 447' SOUTH, 576' SOUTH
- G NEAR EDGE OF ASPHALT OF FRONTAGE ROAD 687' SOUTH
- H BOX CULVERT 680' SOUTH

- I FENCE 248' EAST
- J PROPERTY/SECTION LINE 250' EAST
- K OVERHEAD UTILITY LINE 320' EAST, 342' EAST
- L CULVERT 580' NORTHEAST
- M FLOWLINE OF DRAINAGE SWALE 620' NORTH
- N WETLANDS 725' NORTHWEST
- O QUARTER-SECTION LINE 731' SOUTH