

---

**WPX ENERGY ROCKY MOUNTAIN LLC-EBUS**

---

**KP 533-18  
KOKOPELLI  
Garfield County , Colorado**

**Cement Surface Casing**  
26-May-2012

**Post Job Report**

*The Road to Excellence Starts with Safety*

Sold To #: 300721	Ship To #: 300721	Quote #:	Sales Order #: 9488035
Customer: WPX ENERGY ROCKY MOUNTAIN LLC-EBUS		Customer Rep: Valad, Gary	
Well Name: KP	Well #: 533-18	API/UWI #: 05-045-20628	
Field: KOKOPELLI	City (SAP): TULSA	County/Parish: Garfield	State: Colorado
Lat: N 39.522 deg. OR N 39 deg. 31 min. 20.377 secs.		Long: W 107.595 deg. OR W -108 deg. 24 min. 18.965 secs.	
Contractor: NABORS 574	Rig/Platform Name/Num: NABORS 574		
Job Purpose: Cement Surface Casing			
Well Type: Development Well		Job Type: Cement Surface Casing	
Sales Person: MAYO, MARK		Srvc Supervisor: NICKLE, RYON	MBU ID Emp #: 454759

**Job Personnel**

HES Emp Name	Exp Hrs	Emp #	HES Emp Name	Exp Hrs	Emp #	HES Emp Name	Exp Hrs	Emp #
NICKLE, RYON	7.5	454759	ROSE, BENJAMIN Keith	7.5	487022	SALAZAR, PAUL Omar	7.5	445614

**Equipment**

HES Unit #	Distance-1 way	HES Unit #	Distance-1 way	HES Unit #	Distance-1 way	HES Unit #	Distance-1 way
10951248	60 mile	11021972	60 mile	11027039	60 mile	11560046	60 mile
11808833	60 mile						

**Job Hours**

Date	On Location Hours	Operating Hours	Date	On Location Hours	Operating Hours	Date	On Location Hours	Operating Hours
5/25/12	.5	0	5/26/12	7	1.5			

**TOTAL** Total is the sum of each column separately

**Job**

**Job Times**

Formation Name	Top	Bottom	Called Out	Date	Time	Time Zone
Formation Depth (MD)	0	1000	On Location	25 - May - 2012	20:00	MST
Form Type	BHST		On Location	25 - May - 2012	23:30	MST
Job depth MD	993. ft	Job Depth TVD	Job Started	26 - May - 2012	04:27	MST
Water Depth	Wk Ht Above Floor		Job Completed	26 - May - 2012	05:40	MST
Perforation Depth (MD)	From	To	Departed Loc	26 - May - 2012	07:00	MST

**Well Data**

Description	New / Used	Max pressure psig	Size in	ID in	Weight lbm/ft	Thread	Grade	Top MD ft	Bottom MD ft	Top TVD ft	Bottom TVD ft
-------------	------------	-------------------	---------	-------	---------------	--------	-------	-----------	--------------	------------	---------------

**Sales/Rental/3<sup>rd</sup> Party (HES)**

Description	Qty	Qty uom	Depth	Supplier
PLUG,CMTG, TOP, 9 5/8, HWE, 8.16 MIN/9.06 MA	1	EA		

**Tools and Accessories**

Type	Size	Qty	Make	Depth	Type	Size	Qty	Make	Depth	Type	Size	Qty	Make
Guide Shoe					Packer					Top Plug	1	9.625	HES
Float Shoe					Bridge Plug					Bottom Plug			
Float Collar					Retainer					SSR plug set			
Insert Float										Plug Container	1	9.625	HES
Stage Tool										Centralizers			

**Miscellaneous Materials**

Gelling Agt	Conc	Surfactant	Conc	Acid Type	Qty	Conc	%
Treatment Fld	Conc	Inhibitor	Conc	Sand Type	Size	Qty	

**Fluid Data**

Stage/Plug #: 1													
Fluid #	Stage Type	Fluid Name			Qty	Qty uom	Mixing Density lbm/gal	Yield ft <sup>3</sup> /sk	Mix Fluid Gal/sk	Rate bbl/min	Total Mix Fluid Gal/sk		

Stage/Plug #: 1

Stage/Plug #: 1											
Fluid #	Stage Type	Fluid Name	Qty	Qty uom	Mixing Density lbm/gal	Yield ft <sup>3</sup> /sk	Mix Fluid Gal/sk	Rate bbl/min	Total Mix Fluid Gal/sk		
1	Fresh Water		20.00	bbl	8.33	.0	.0	3			
2	VersaCem Tail	VERSACEM (TM) SYSTEM (452010)	295.0	sacks	12.8	2.11	11.72	8	11.72		
11.724 Gal		FRESH WATER									
3	Displacement Fluid		74.00	bbl	8.34	.0	.0	10			
Calculated Values			Pressures			Volumes					
Displacement	74.7	Shut In: Instant	Lost Returns		Cement Slurry	110.9	Pad				
Top Of Cement		5 Min	Cement Returns	20	Actual Displacement	74.7	Treatment				
Frac Gradient		15 Min	Spacers	20	Load and Breakdown		Total Job	206			
Rates											
Circulating	RIG	Mixing	8	Displacement	10	Avg. Job	9				
Cement Left In Pipe	Amount	44.39 ft	Reason	Shoe Joint							
Frac Ring # 1 @	ID	Frac ring # 2 @	ID	Frac Ring # 3 @	ID	Frac Ring # 4 @	ID				
The Information Stated Herein Is Correct				Customer Representative Signature							

*The Road to Excellence Starts with Safety*

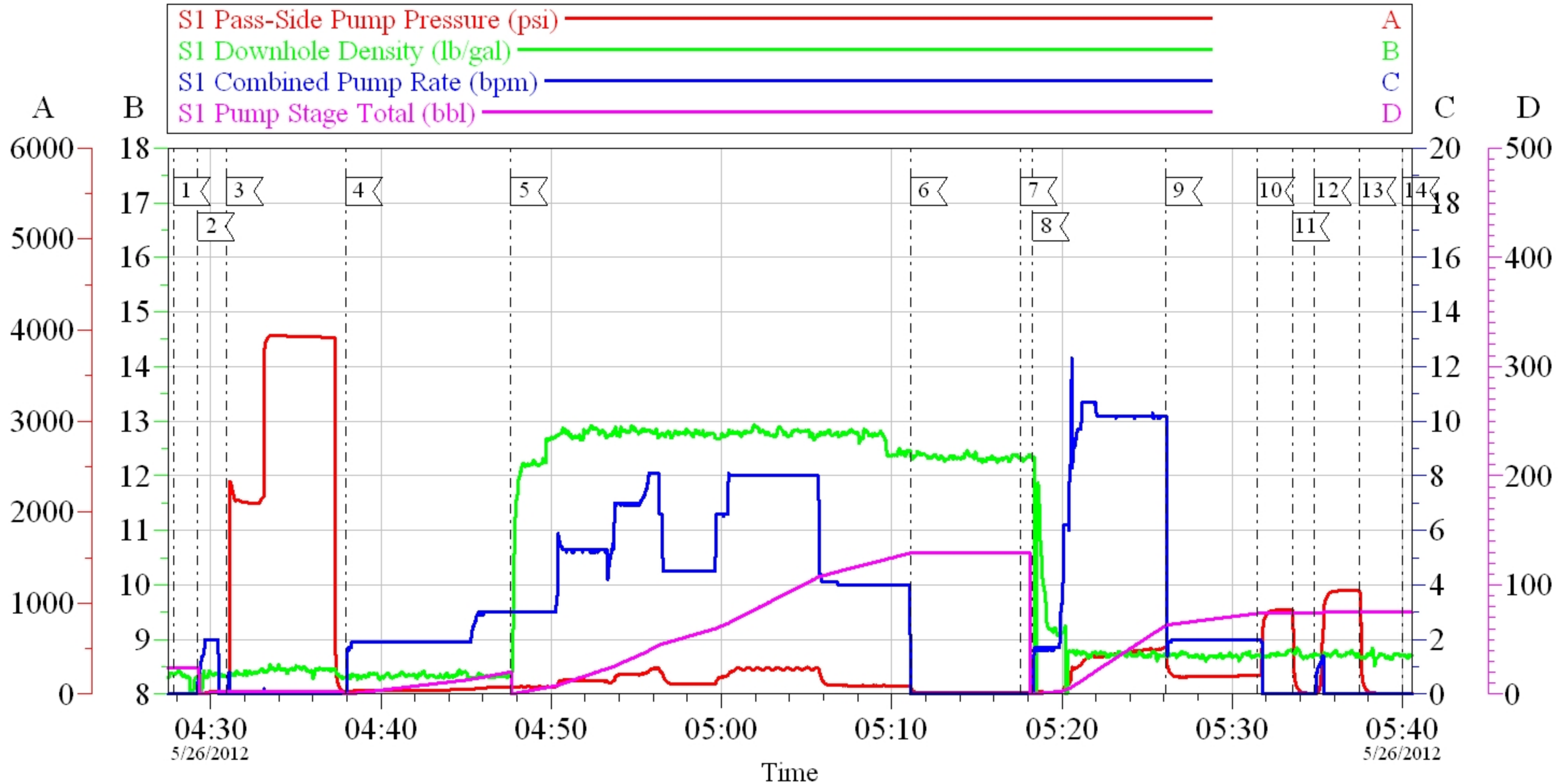
<b>Sold To #:</b> 300721	<b>Ship To #:</b> 300721	<b>Quote #:</b>	<b>Sales Order #:</b> 9488035
<b>Customer:</b> WPX ENERGY ROCKY MOUNTAIN LLC-EBUS		<b>Customer Rep:</b> Valad, Gary	
<b>Well Name:</b> KP		<b>Well #:</b> 533-18	<b>API/UWI #:</b> 05-045-20628
<b>Field:</b> KOKOPELLI	<b>City (SAP):</b> TULSA	<b>County/Parish:</b> Garfield	<b>State:</b> Colorado
<b>Legal Description:</b>			
<b>Lat:</b> N 39.522 deg. OR N 39 deg. 31 min. 20.377 secs.		<b>Long:</b> W 107.595 deg. OR W -108 deg. 24 min. 18.965 secs.	
<b>Contractor:</b> NABORS 574		<b>Rig/Platform Name/Num:</b> NABORS 574	
<b>Job Purpose:</b> Cement Surface Casing			<b>Ticket Amount:</b>
<b>Well Type:</b> Development Well		<b>Job Type:</b> Cement Surface Casing	
<b>Sales Person:</b> MAYO, MARK		<b>Srvc Supervisor:</b> NICKLE, RYON	<b>MBU ID Emp #:</b> 454759

Activity Description	Date/Time	Cht #	Rate bbl/min	Volume bbl		Pressure psig		Comments
				Stage	Total	Tubing	Casing	
Call Out	05/25/2012 20:00							HES CEMENT CREW
Pre-Convoy Safety Meeting	05/25/2012 21:45							ALL HES CEMENT CREW
Crew Leave Yard	05/25/2012 22:00							
Arrive At Loc	05/25/2012 23:30							RIG RIGGING DOWN SCIENTIFIC DRILLING EQUIPMENT
Assessment Of Location Safety Meeting	05/25/2012 23:45							ALL HES CEMENT CREW
Other	05/26/2012 03:15							SPOT EQUIPMENT; 1 CEMENTERS F 550, 1 ELITE PUMPING UNIT, 1 660 BULK TRANSPORT
Pre-Rig Up Safety Meeting	05/26/2012 03:25							ALL HES CEMENT CREW
Pre-Job Safety Meeting	05/26/2012 04:00							ALL HES CEMENT CREW, RIG CREW, COMPANY REP, AVAILABLE 3RD PARTY EE'S
Start Job	05/26/2012 04:27							TD- 1000' TP- 993' SHOE- 44.39' OH- 13.5" SURFACE CASING- 9.625" 32.3#/FT J-55 MUD- 10.5 PPG YP- 26 PV- 28
Other	05/26/2012 04:29		2	2			32.0	FILL LINES, FRESH WATER
Activity Description	Date/Time	Cht #	Rate bbl/min	Volume bbl		Pressure psig		Comments
				Stage	Total	Tubing	Casing	

Pressure Test	05/26/2012 04:30							STALL OUT @ 2110 PSI, HELD FOR 30 SEC. PRESSURE UP TO 3947 PSI HELD FOR 3 MIN, PRESSURE DROP TO 3921 PSI
Pump Spacer 1	05/26/2012 04:37		4	20			72.0	FRESH WATER
Pump Tail Cement	05/26/2012 04:47		8	110.8			275.0	295 SKS; 12.8 PPG, 2.11 FT3/SK, 11.72 GAL/SK
Shutdown	05/26/2012 05:11							WASH UP ON TOP OF PLUG PER CO REP
Drop Top Plug	05/26/2012 05:17							CO REP VERIFIED PLUG LAUNCHED
Pump Displacement	05/26/2012 05:18		10	64.6			492.0	FRESH WATER
Slow Rate	05/26/2012 05:26		2	10			223.0	
Bump Plug	05/26/2012 05:31						923.0	
Check Floats	05/26/2012 05:33							FLOATS DID NOT HOLD, SMALL STREAM BACK, PER CO REP BUMP PLUG AGAIN. RETURNED 1/2 BBLS H2O
Bump Plug	05/26/2012 05:34						1136.0	FLOATS HELD RETURNED 1/2 BBL H2O
Check Floats	05/26/2012 05:37							
End Job	05/26/2012 05:40							PIPE WAS NOT MOVED, GOOD RETURNS THROUGHOUT, 20 BBLS CEMENT TO SURFACE
Post-Job Safety Meeting (Pre Rig-Down)	05/26/2012 05:45							ALL HES CEMENT CREW
Pre-Convoy Safety Meeting	05/26/2012 06:45							ALL HES CEMENT CREW
Crew Leave Location	05/26/2012 07:00							THANK YOU FOR USING HALLIBURTON CEMENTING, RYON NICKLE AND CREW

# WPX ENERGY ROCKY MOUNTAIN - KP 533-18

## SURFACE

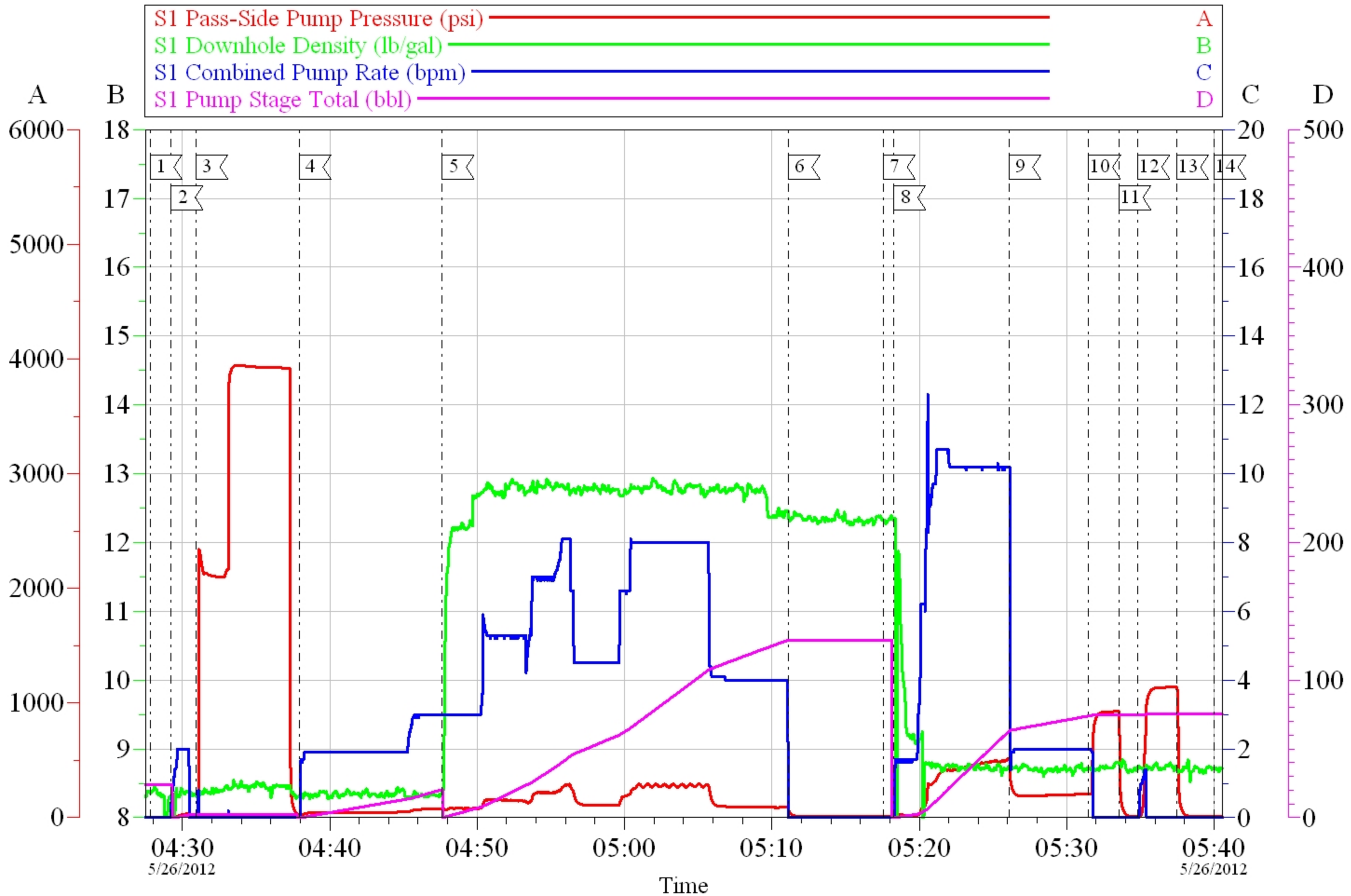


Local Event Log					
1	START JOB	04:27:48	2	FILL LINES	04:29:14
3	PRESSURE TEST	04:30:55	4	PUMP H2O	04:37:55
5	PUMP TAIL CEMENT	04:47:38	6	SHUTDOWN	05:11:06
7	DROP TOP PLUG	05:17:33	8	PUMP DISPLACEMENT	05:18:16
9	SLOW RATE	05:26:05	10	BUMP PLUG	05:31:30
11	CHECK FLOATS	05:33:33	12	BUMP PLUG	05:34:50
13	CHECK FLOATS	05:37:27	14	END JOB	05:40:00

Customer:	WPX ENERGY ROCKY MOUNTAIN LLC-EBUS	Job Date:	26-May-2012	Sales Order #:	9488035
Well Description:	KP 533-18	Job Type:	SURFACE	ADC Used:	YES
Company Rep:	GARY VALAD	Cement Supervisor:	RYON NICKLE	Elite # / Operator:	E5 / BEN ROSE

# WPX ENERGY ROCKY MOUNTAIN - KP 533-18

SURFACE



Customer:	WPX ENERGY ROCKY MOUNTAIN LLC-EBUS	Job Date:	26-May-2012	Sales Order #:	9488035
Well Description:	KP 533-18	Job Type:	SURFACE	ADC Used:	YES
Company Rep:	GARY VALAD	Cement Supervisor:	RYON NICKLE	Elite # / Operator:	E5 / BEN ROSE

<b>Sales Order #:</b> 9488035	<b>Line Item:</b> 10	<b>Survey Conducted Date:</b> 5/26/2012
<b>Customer:</b> WPX ENERGY ROCKY MOUNTAIN LLC-EBUS		<b>Job Type (BOM):</b> CMT SURFACE CASING BOM
<b>Customer Representative:</b> GARY VALAD		<b>API / UWI: (leave blank if unknown)</b> 05-045-20628
<b>Well Name:</b> KP		<b>Well Number:</b> 533-18
<b>Well Type:</b> Development Well	<b>Well Country:</b> United States of America	
<b>H2S Present:</b> No	<b>Well State:</b> Colorado	<b>Well County:</b> Garfield

Dear Customer,

We hope that you were satisfied with the service quality of this job performed by Halliburton. It is the aim of our management and service personnel to deliver equipment and service of a standard unmatched in the service sector of the energy industry.

Please take the time to let us know if our performance met with your satisfaction. Please be as critical as possible to ensure we constantly improve our service. Your comments are of great value to us and are intended for the exclusive use of Halliburton.

### CUSTOMER SATISFACTION SURVEY

CATEGORY	CUSTOMER SATISFACTION RESPONSE	
Survey Conducted Date	The date the survey was conducted	5/26/2012
Survey Interviewer	The survey interviewer is the person who initiated the survey.	RYON NICKLE (HB22175)
Customer Participation	Did the customer participate in this survey? (Y/N)	Yes
Customer Representative	Enter the Customer representative name	GARY VALAD
HSE	Was our HSE performance satisfactory? Circle Y or N	Yes
Equipment	Were you satisfied with our Equipment? Circle Y or N	Yes
Personnel	Were you satisfied with our people? Circle Y or N	Yes
Customer Comment	Customer's Comment	

<b>CUSTOMER SIGNATURE</b>
---------------------------

<b>Sales Order #:</b> 9488035	<b>Line Item:</b> 10	<b>Survey Conducted Date:</b> 5/26/2012
<b>Customer:</b> WPX ENERGY ROCKY MOUNTAIN LLC-EBUS		<b>Job Type (BOM):</b> CMT SURFACE CASING BOM
<b>Customer Representative:</b> GARY VALAD		<b>API / UWI: (leave blank if unknown)</b> 05-045-20628
<b>Well Name:</b> KP		<b>Well Number:</b> 533-18
<b>Well Type:</b> Development Well	<b>Well Country:</b> United States of America	
<b>H2S Present:</b> No	<b>Well State:</b> Colorado	<b>Well County:</b> Garfield

### KEY PERFORMANCE INDICATORS

General	
<b>Survey Conducted Date</b>	5/26/2012
The date the survey was conducted	

Cementing KPI Survey	
<b>Type of Job</b>	0
Select the type of job. (Cementing or Non-Cementing)	
<b>Select the Maximum Deviation range for this Job</b>	Vertical
What is the highest deviation for the job you just completed? This may not be the maximum well deviation.	
<b>Total Operating Time (hours)</b>	2.5
Total Operating Hours Including Rig-up, Pumping, Rig-down. Enter in decimal format.	
<b>HSE Incident, Accident, Injury</b>	No
HSE Incident, Accident, Injury. This should be recordable incidents only.	
<b>Was the job purpose achieved?</b>	Yes
Was the job delivered correctly as per customer agreed design?	
<b>Operating Hours (Pumping Hours)</b>	1
Total number of hours pumping fluid on this job. Enter in decimal format.	
<b>Customer Non-Productive Rig Time (hrs)</b>	0
Lost time due to Halliburton in the start, execution, or completion of an ordered service or product, or delays in a follow-on service. Enter in decimal format. 0 if none.	
<b>Type of Rig Classification Job Was Performed</b>	Drilling Rig (Portable)
Type Of Rig (classification) Job Was Performed On	
<b>Number Of JSAs Performed</b>	5
Number Of Jsas Performed	
<b>Number of Unplanned Shutdowns</b>	0
Unplanned shutdown is when injection stops for any period of time.	
<b>Was this a Primary Cement Job (Yes / No)</b>	Yes

<b>Sales Order #:</b> 9488035	<b>Line Item:</b> 10	<b>Survey Conducted Date:</b> 5/26/2012
<b>Customer:</b> WPX ENERGY ROCKY MOUNTAIN LLC-EBUS		<b>Job Type (BOM):</b> CMT SURFACE CASING BOM
<b>Customer Representative:</b> GARY VALAD		<b>API / UWI: (leave blank if unknown)</b> 05-045-20628
<b>Well Name:</b> KP		<b>Well Number:</b> 533-18
<b>Well Type:</b> Development Well	<b>Well Country:</b> United States of America	
<b>H2S Present:</b> No	<b>Well State:</b> Colorado	<b>Well County:</b> Garfield

Primary Cement Job= Casing job, Liner job, or Tie-back job.	
<b>Did We Run Wiper Plugs?</b> Did We Run Top And Bottom Casing Wiper Plugs?	Top
<b>Mixing Density of Job Stayed in Designed Density Range (0-100%)</b> Density Range defined as +/- .20 ppg. Calculation: Total BBLs cement mixed at designed density divided by total BBLs of cement multiplied by 100	95
<b>Was Automated Density Control Used?</b> Was Automated Density Control (ADC) Used ?	Yes
<b>Pump Rate (percent) of Job Stayed At Designed Pump Rate</b> Pump Rate range defined as +/- 1bbl/min. Calculation: Total BBLs of fluid pumped at the designed rate divided by Total BBLs of fluid pumped, multiplied by 100	95
<b>Nbr of Remedial Sqz Jobs Rqd - Competition</b> Number Of Remedial Squeeze Jobs Required After Primary Job Performed By Competition	0
<b>Nbr of Remedial Plug Jobs Rqd - HES</b> Number Of Remedial Plug Jobs Needed After Primary Plug Pumped By HES	0
<b>Nbr of Remedial Sqz Jobs Rqd - HES</b> Number Of Remedial Squeeze Jobs Required After Primary Job Performed By HES	0