

LEGEND:

⊙ PROPOSED LOCATION

N

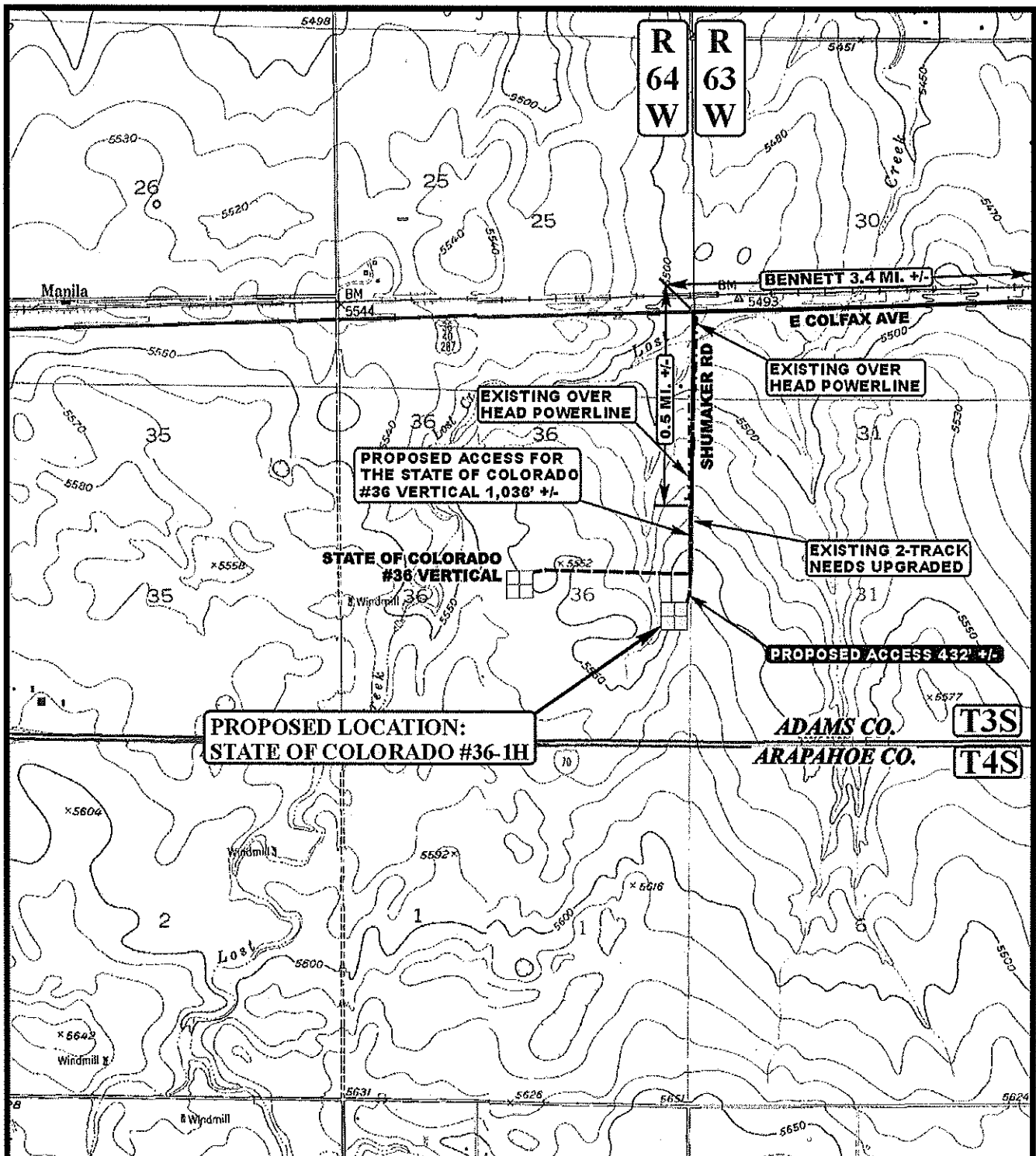


ConocoPhillips Company

STATE OF COLORADO #36-1H
SECTION 36, T3S, R64W, 6th P.M.
1980' FSL 250' FEL

U E L S
Utah Engineering & Land Surveying
85 South 200 East Vernal, Utah 84078
(435) 789-1017 * FAX (435) 789-1813

ACCESS ROAD	06	27	12	A TOPO
M A P	MONTH	DAY	YEAR	
SCALE: 1:100,000		DRAWN BY: A.T.		REVISED: 00-00-00



LEGEND:

	EXISTING ROAD
	PROPOSED ACCESS ROAD
	EXISTING 2-TRACK NEEDS UPGRADED



ConocoPhillips Company

STATE OF COLORADO #36-1H
SECTION 36, T3S, R64W, 6th P.M.
1980' FSL 250' FEL



Uintah Engineering & Land Surveying
85 South 200 East Vernal, Utah 84078
(435) 789-1017 * FAX (435) 789-1813

ACCESS ROAD
MAP

06 27 12
MONTH DAY YEAR



SCALE: 1" = 2000' DRAWN BY: A.T. REVISED: 00-00-00