

ConocoPhillips Company

CONSTRUCTION LAYOUT FOR

STATE OF COLORADO #36-1H
SECTION 36, T3S, R64W, 6th P.M.
1980' FSL 250' FEL

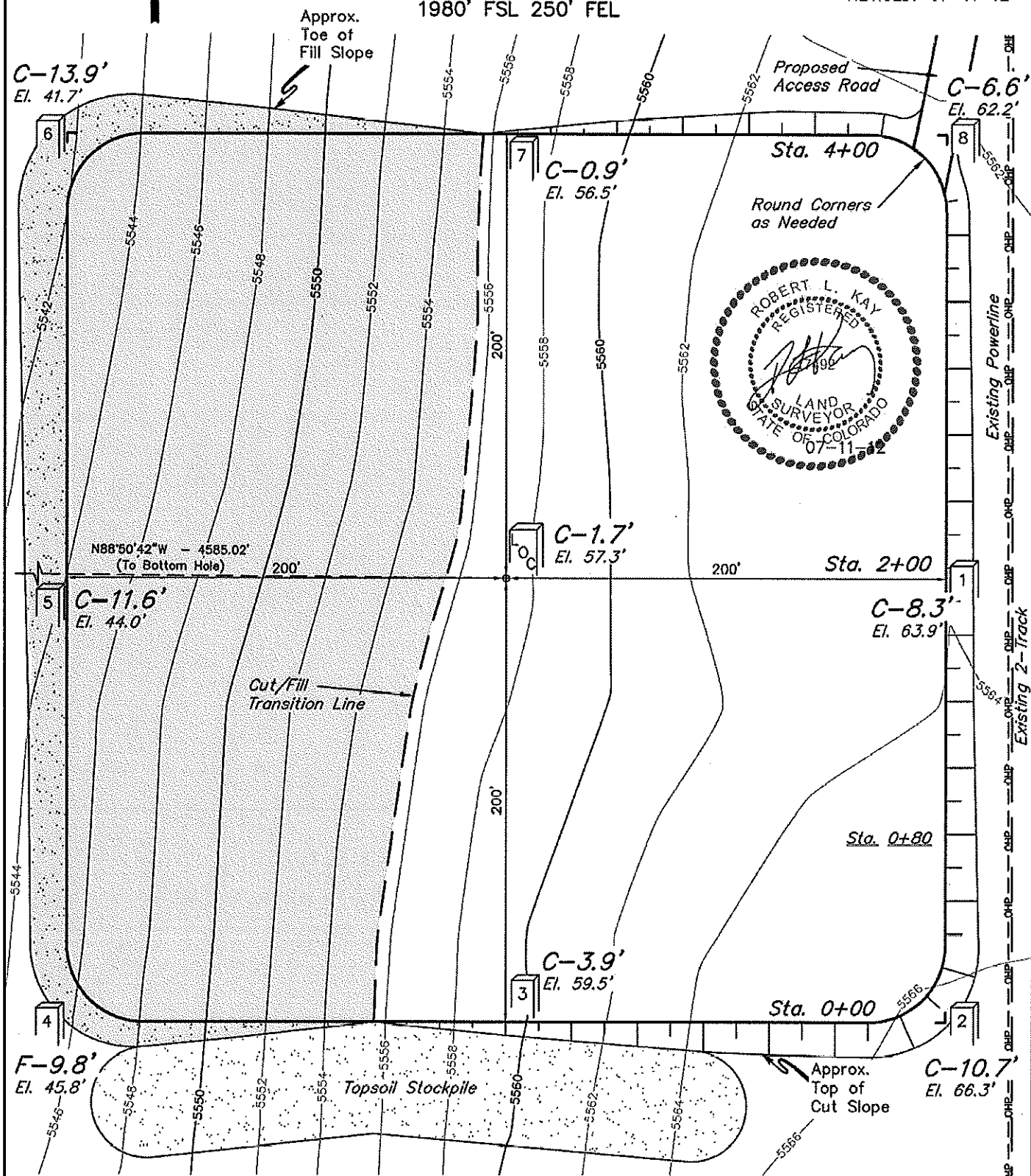
FIGURE #1

SCALE: 1" = 60'

DATE: 06-28-12

DRAWN BY: J.W.

REVISED: 07-11-12



Elev. Ungraded Ground At Loc. Stake = 5557.3'
FINISHED GRADE ELEV. AT LOC. STAKE = 5555.6'

UINTAH ENGINEERING & LAND SURVEYING
85 So. 200 East * Vernal, Utah 84078 * (435) 789-1017

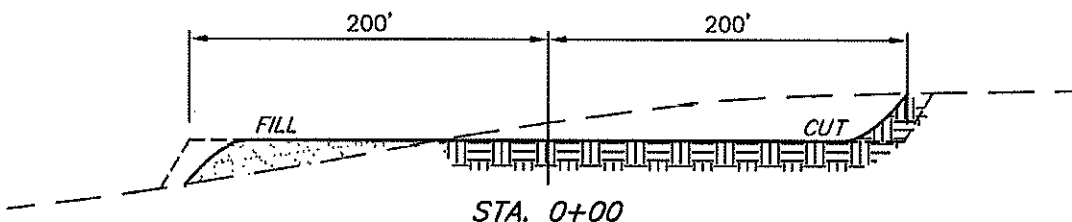
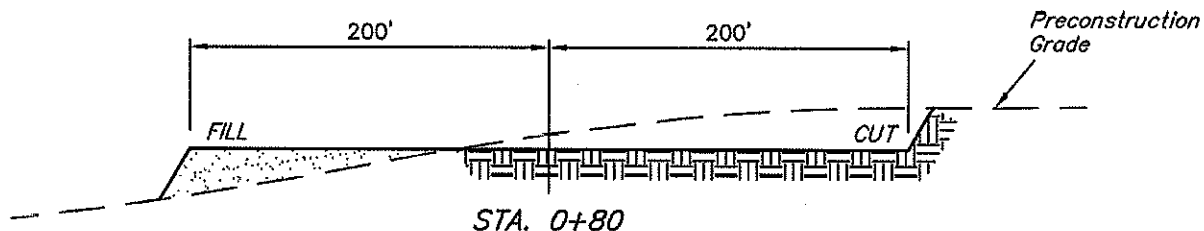
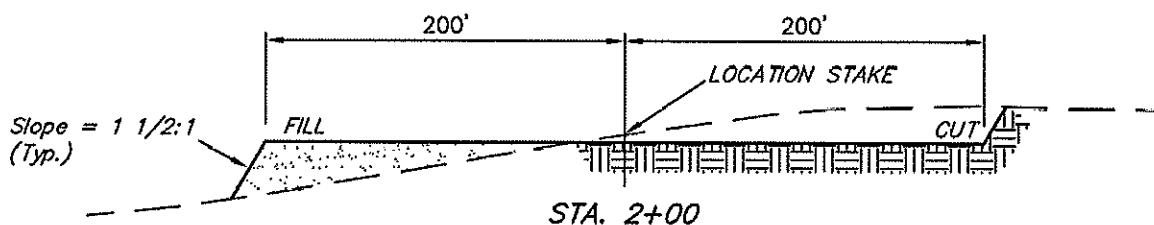
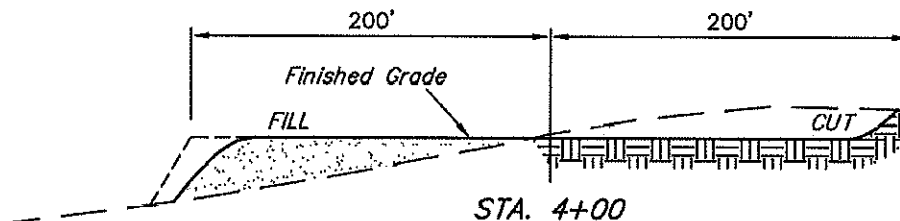
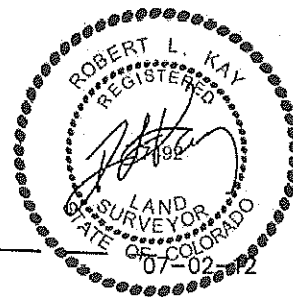
1" = 40'
X-Section
Scale
1" = 100'

DATE: 06-28-12
DRAWN BY: J.W.

ConocoPhillips Company
CONSTRUCTION LAYOUT CROSS SECTIONS FOR

STATE OF COLORADO #36-1H
SECTION 36, T3S, R64W, 6th P.M.
1980' FSL 250' FEL

FIGURE #2



NOTE:

Topsoil should not be
Stripped Below Finished
Grade on Substructure Area.

APPROXIMATE ACREAGES

WELL SITE DISTURBANCE = ± 4.435 ACRES
ACCESS ROAD DISTURBANCE = ± 0.298 ACRES
TOTAL = ± 4.733 ACRES

* NOTE:
FILL QUANTITY INCLUDES
5% FOR COMPACTION

APPROXIMATE YARDAGES

(6") Topsoil Stripping = 3,320 Cu. Yds.
Remaining Location = 19,260 Cu. Yds.
TOTAL CUT = 22,580 CU. YDS.
FILL = 19,260 CU. YDS.

EXCESS MATERIAL = 3,320 Cu. Yds.
Topsoil & Pit Backfill = 3,320 Cu. Yds.
(1/2 Pit Vol.)
EXCESS UNBALANCE = 0 Cu. Yds.
(After Interim Rehabilitation)

UINTAH ENGINEERING & LAND SURVEYING
85 So. 200 East * Vernal, Utah 84078 * (435) 789-1017