

R
59
W

R
58
W

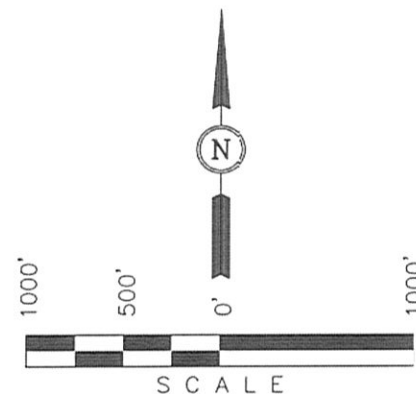
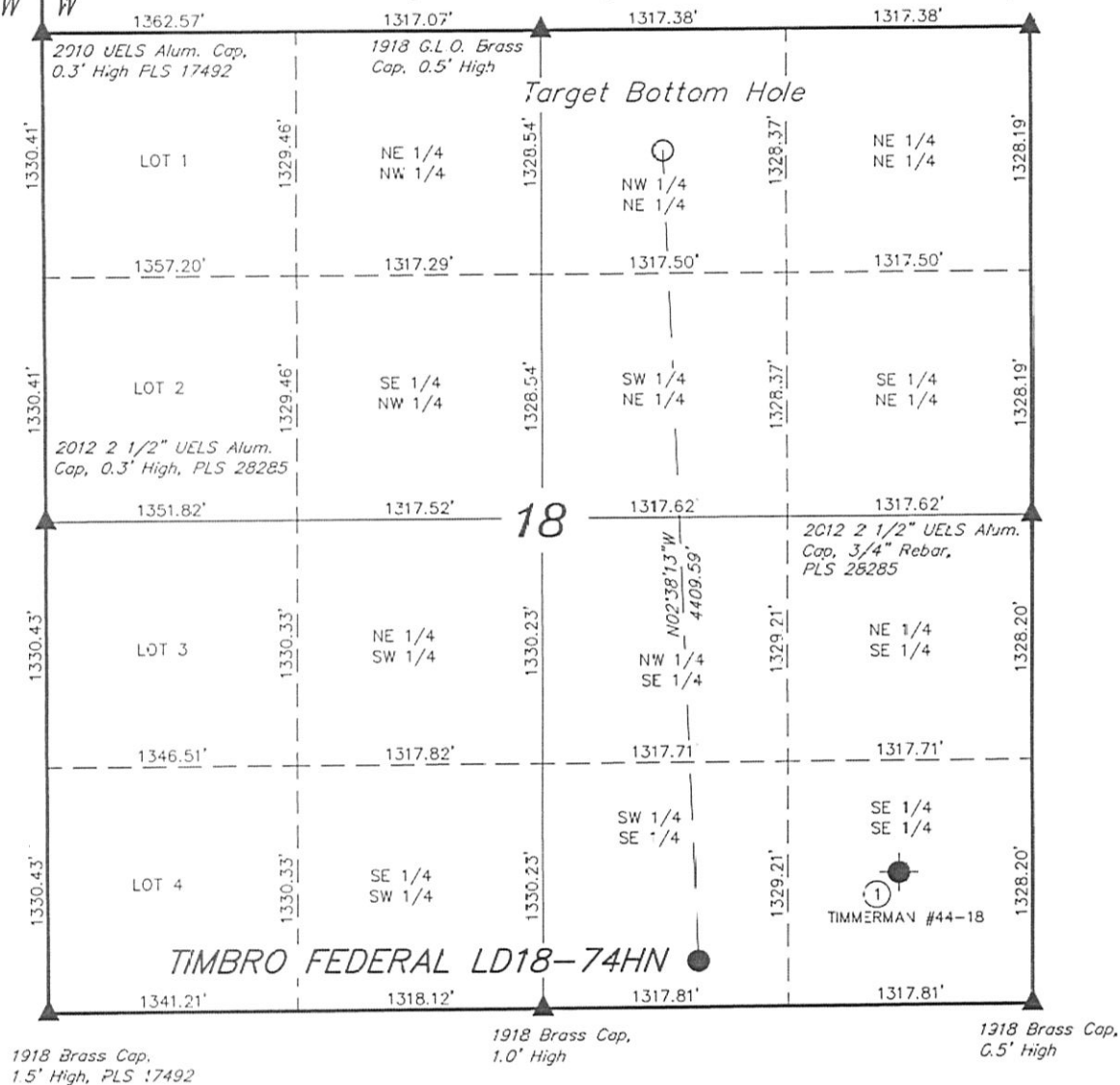
SITE SKETCH

T9N, R58W, 6th P.M.

2010 UELS Alum. Cap,
Flush W/ Ground

NOBLE ENERGY, INC.

Well location, TIMBRO FEDERAL LD18-74HN,
located as shown in the SW 1/4 SE 1/4 of
Section 18, T9N, R58W, 6th P.M., Weld County,
Colorado.



LEGEND:

- ▲ = SECTION CORNERS LOCATED.
- = PROPOSED WELL HEAD.
- = BOTTOM HOLE
- = ABANDONED WELLS

REVISED: 08-16-12 J.M.H.

UINTAH ENGINEERING & LAND SURVEYING
85 SOUTH 200 EAST - VERNAL, UTAH 84078
(435) 789-1017

SCALE 1" = 1000'	DATE SURVEYED: 03-22-12	DATE DRAWN: 04-03-12
PARTY ZANE BULLARD A.G. B.L.B.	REFERENCES G.L.O. PLAT	
WEATHER WARM	FILE NOBLE ENERGY, INC.	

	WELL NAME	QTR-QTR	FOOTAGES	LATITUDE	LCNGITUDE	ELEVATION	PDOP
1	TIMMERMAN #44-18	SE 1/4 SE 1/4	FROM COGCC DATABASE	40.745893°	103.900197°	4869'	N.A.