

*The Road to Excellence Starts with Safety*

Sold To #: 300721		Ship To #: 2715678		Quote #:		Sales Order #: 7187478	
Customer: WILLIAMS PRODUCTION RMT INC EBUSINE				Customer Rep: Mulherin, Seth			
Well Name: RWF		Well #: 414-18		API/UWI #:			
Field: PICEANCE		City (SAP): RIFLE		County/Parish: Garfield		State: Colorado	
Contractor: NABORS 573		Rig/Platform Name/Num: NABORS 573					
Job Purpose: Cement Surface Casing							
Well Type: Development Well				Job Type: Cement Surface Casing			
Sales Person: KOHL, KYLE				Srcv Supervisor: KUKUS, CRAIG		MBU ID Emp #: 369124	
<b>Job Personnel</b>							
HES Emp Name		Exp Hrs	Emp #	HES Emp Name		Exp Hrs	Emp #
FEUERBORN, JOHN William		8	381677	HAYES, JESSE Doug		8	403601
ROCKERT, CHRISTOPHER Michael		8	332914				
<b>Equipment</b>							
HES Unit #	Distance-1 way	HES Unit #	Distance-1 way	HES Unit #	Distance-1 way	HES Unit #	Distance-1 way
10871245	60 mile	11021972	60 mile	11027039	60 mile	11259885	60 mile
11360881	60 mile						
<b>Job Hours</b>							
Date	On Location Hours	Operating Hours	Date	On Location Hours	Operating Hours	Date	On Location Hours
2/27/10	4	0	2/28/10	4	1		
TOTAL		Total is the sum of each column separately					
<b>Job</b>				<b>Job Times</b>			
Formation Name				Date		Time	Time Zone
Formation Depth (MD)		Top	Bottom	Called Out		27 - Feb - 2010	15:30
Form Type		BHST		On Location		27 - Feb - 2010	20:00
Job depth MD		1124. ft	Job Depth TVD	1124. ft	Job Started	28 - Feb - 2010	01:45
Water Depth		Wk Ht Above Floor		4. ft	Job Completed	28 - Feb - 2010	02:25
Perforation Depth (MD)		From	To	Departed Loc		28 - Feb - 2010	03:35
<b>Well Data</b>							
Description	New / Used	Max pressure psig	Size in	ID in	Weight lbm/ft	Thread	Grade
							Top MD ft
							Bottom MD ft
							Top TVD ft
							Bottom TVD ft
<b>Sales/Rental/3<sup>rd</sup> Party (HES)</b>							
Description				Qty	Qty uom	Depth	Supplier
PLUG,CMTG,TOP,9 5/8,HWE,8.16 MIN/9.06 MA				1	EA		
PORT. DAS W/CEMWIN;ACQUIRE W/HES, ZI				1	JOB		
ADC (AUTO DENSITY CTRL) SYS, /JOB,ZI				1	JOB		
<b>Tools and Accessories</b>							
Type	Size	Qty	Make	Depth	Type	Size	Qty
Guide Shoe					Packer		
Float Shoe					Bridge Plug		
Float Collar					Retainer		
Insert Float							
Stage Tool							
<b>Miscellaneous Materials</b>							
Gelling Agt		Conc		Surfactant		Conc	
Treatment Fld		Conc		Inhibitor		Conc	
				Acid Type		Qty	
				Sand Type		Size	
						Conc	%
						Qty	

Fluid Data									
Stage/Plug #: 1									
Fluid #	Stage Type	Fluid Name	Qty	Qty uom	Mixing Density lbm/gal	Yield ft <sup>3</sup> /sk	Mix Fluid Gal/sk	Rate bbl/min	Total Mix Fluid Gal/sk
1	Water Spacer		20	bbl	8.4	.0	.0	.0	
2	Lead Cement	VERSACEM (TM) SYSTEM (452010)	160	sacks	12.3	2.38	13.75		
3	Tail Cement	VERSACEM (TM) SYSTEM (452010)	160	sacks	12.8	2.11	11.75		
4	Displacement Fluid		84.3	bbl	8.4	.0	.0	.0	
Calculated Values		Pressures		Volumes					
Displacement		Shut In: Instant		Lost Returns		Cement Slurry	128	Pad	
Top Of Cement	0	5 Min		Cement Returns	27	Actual Displacement	84.3	Treatment	
Frac Gradient		15 Min		Spacers	20	Load and Breakdown		Total Job	
Rates									
Circulating		Mixing	8	Displacement	8	Avg. Job	8		
Cement Left In Pipe	Amount	43.3ft	Reason	Shoe Joint					
Frac Ring # 1 @	ID	Frac ring # 2 @	ID	Frac Ring # 3 @	ID	Frac Ring # 4 @	ID		
The Information Stated Herein Is Correct				Customer Representative Signature					



*The Road to Excellence Starts with Safety*

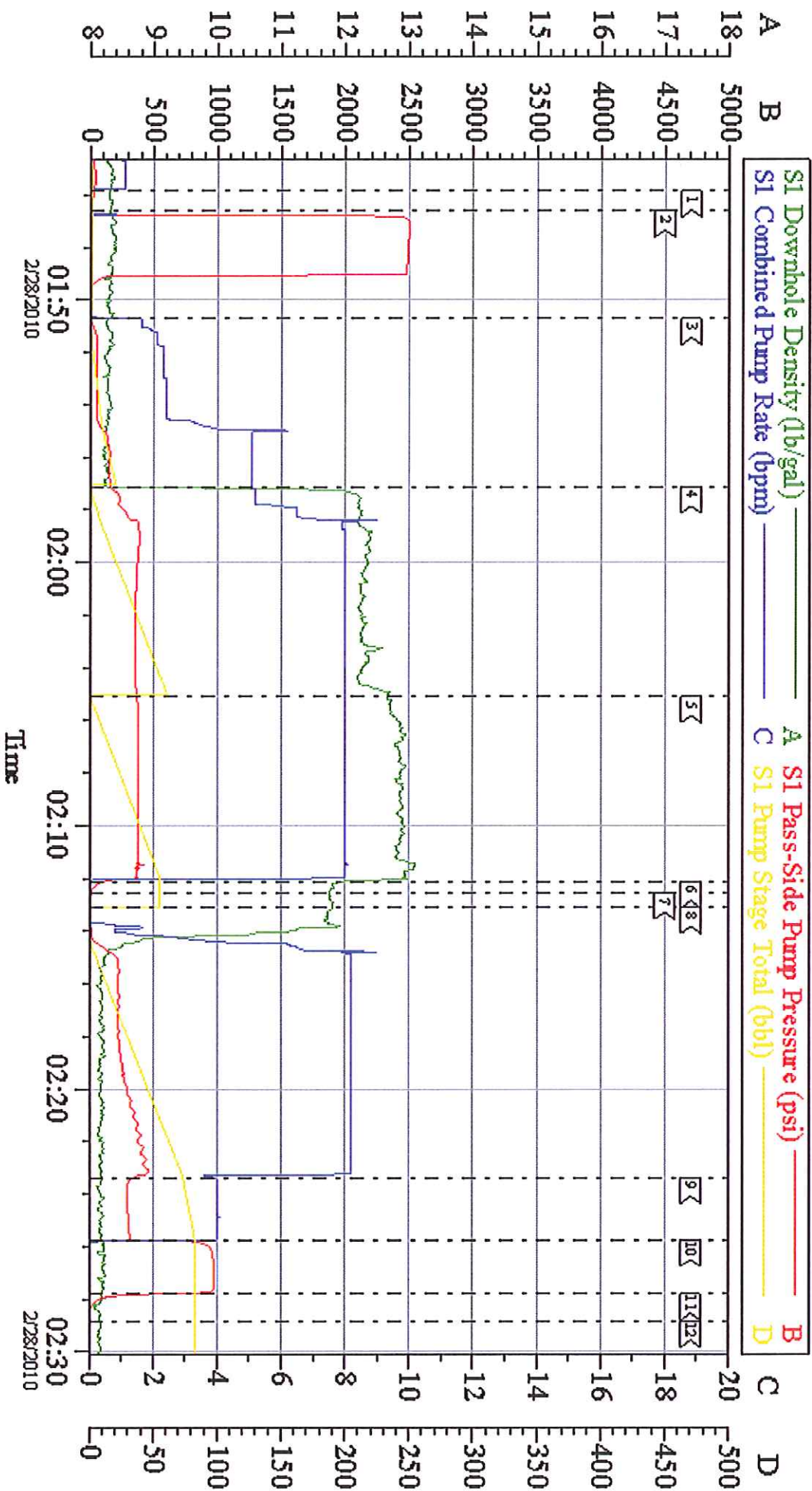
Sold To #: 300721	Ship To #: 2715678	Quote #:	Sales Order #: 7187478
Customer: WILLIAMS PRODUCTION RMT INC EBUSINE		Customer Rep: Mulherin, Seth	
Well Name: RWF	Well #: 414-18	API/UWI #:	
Field: PICEANCE	City (SAP): RIFLE	County/Parish: Garfield	State: Colorado
Legal Description:			
Lat: N 0 deg. OR N 0 deg. 0 min. 0 secs.		Long: E 0 deg. OR E 0 deg. 0 min. 0 secs.	
Contractor: NABORS 573		Rig/Platform Name/Num: NABORS 573	
Job Purpose: Cement Surface Casing			Ticket Amount:
Well Type: Development Well		Job Type: Cement Surface Casing	
Sales Person: KOHL, KYLE		Srv Supervisor: KUKUS, CRAIG	
		MBU ID Emp #: 369124	

Activity Description	Date/Time	Cht #	Rate bbl/min	Volume bbl		Pressure psig		Comments
				Stage	Total	Tubing	Casing	
Depart Yard Safety Meeting	02/27/2010 17:30							ALL HES PRESENT
Crew Leave Yard	02/27/2010 17:40							
Arrive At Loc	02/27/2010 20:00							RIG JUST STARTED RUNNING CASING
Safety Meeting - Assessment of Location	02/27/2010 20:10							MUDDY
Other	02/28/2010 00:33							SPOT EQUIPMENT
Pre-Rig Up Safety Meeting	02/28/2010 00:40							ALL HES PRESENT
Rig-Up Equipment	02/28/2010 00:45							
Pre-Job Safety Meeting	02/28/2010 01:30							
Start Job	02/28/2010 01:45							TD 1124 TP 1114 SJ 43.3 CAS 9 5/8 32.3 H-40 HOLE 13.5 MUD WT 10.0 SPACER FRESH WTR 20 BBL
Test Lines	02/28/2010 01:46							
Pump Spacer 1	02/28/2010 01:50		6	20			158.0	FRESH WATER SPACER
Pump Lead Cement	02/28/2010 01:57		8	67.8			388.0	PUMPED LEAD CMT 12.3 PPG 2.38 Y 13.75 WTR /160 SKS
Pump Tail Cement	02/28/2010 02:05		8	60.12			385.0	PUMPED TAIL CMT 12.8 PPG 2.11 Y 11.75 WTR / 160 SKS
Shutdown	02/28/2010 02:12							
Drop Top Plug	02/28/2010 02:13							PLUG AWAY /WASH OUT ON TOP OF PLUG

Activity Description	Date/Time	Cht #	Rate bbl/min	Volume bbl		Pressure psig		Comments
				Stage	Total	Tubing	Casing	
Pump Displacement	02/28/2010 02:13		10				470.0	PUMPED FRESH WATER
Other	02/28/2010 02:23		4	74			367.0	SLOW RATE
Bump Plug	02/28/2010 02:25		4	84.3			950.0	HOLD FOR 2 MIN
Check Floats	02/28/2010 02:27							RELEASE CHECK FLOATS / FLOATS HELD
End Job	02/28/2010 02:28							
Post-Job Safety Meeting (Pre Rig-Down)	02/28/2010 02:35							ALL HES PRESENT
Safety Meeting - Departing Location	02/28/2010 03:30							ALL HES PRESENT
Crew Leave Location	02/28/2010 03:35							



# WILLIAMS NABORS 573 SURFACE



Customer: WILLIAMS  
Well Description: RWF 414-18  
Company Rep: SETH MULHERIN

Job Date: 28-Feb-2010  
Job Type: SURFACE  
Cement Supervisor: CRAIG KUKUS

Sales Order #: 7187478  
ADC Used: YES  
File #: #8 JESSE HAYES