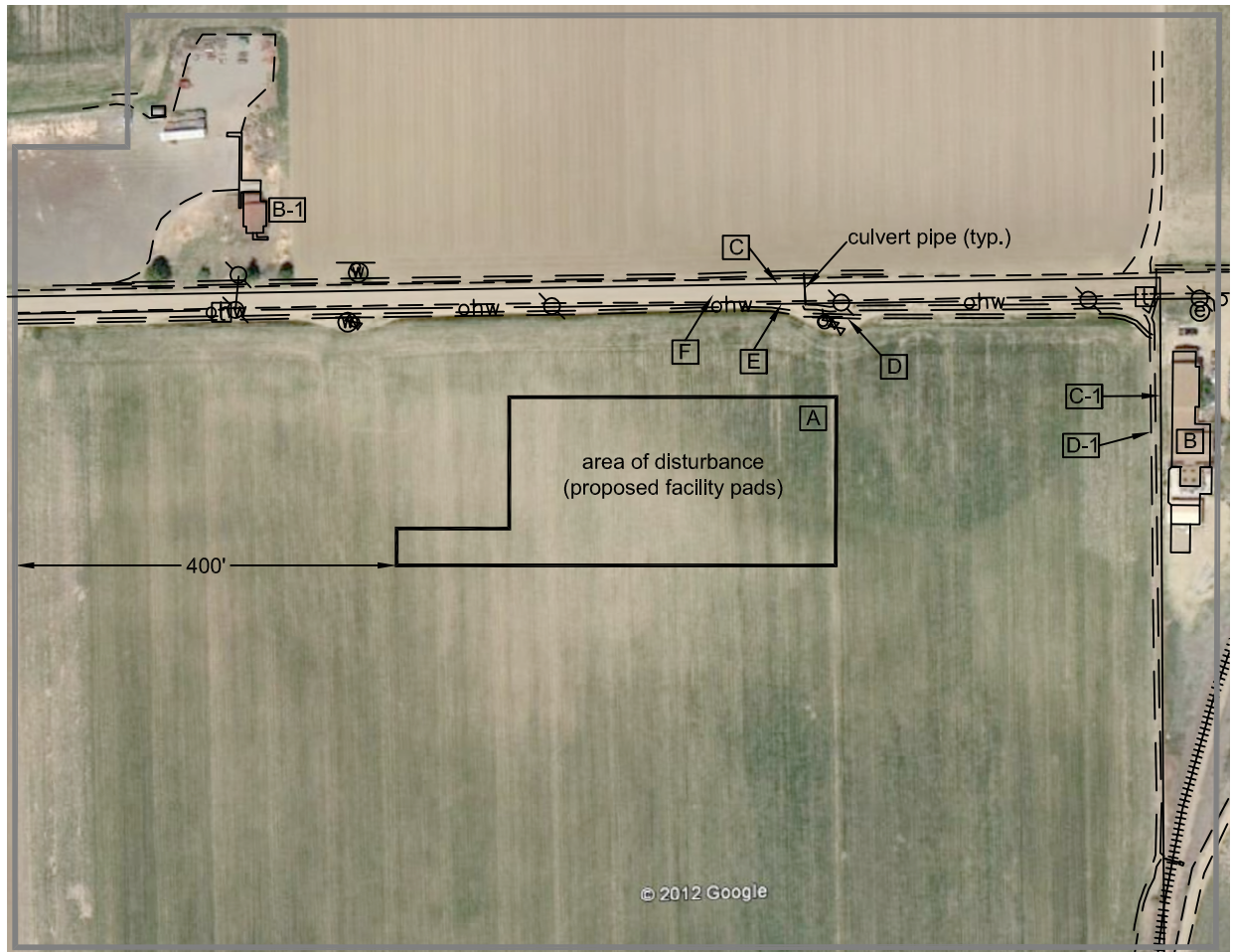
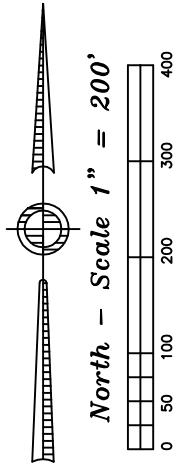


Nearest:
 Building: 352' east
 Above Ground Utility: 98' north
 Public Road: 101' north
 Property Line: 119' north
 Railroad: 479' southeast

Location Drawing

JR Land Surveying, LLC
 8114 Northstar Drive
 Windsor, Colorado 80528
 P. 970-576-4641



Proposed Pad Data:

Northeast corner of
 area of disturbance
 Latitude: N 40.21826°
 Longitude: W 105.00907°
 FNL: 119'
 FWL: 2298'
 ELEV: 5034'
 PDOP: 1.5

**Distances listed below are
 measured from the Northeast
 corner of the area of disturbance
 (proposed facility pads)**

- [A] northeast corner of the area of disturbance
 (proposed facilities pads)
- [B] building 352' east
- [B-1] building 624' northwest
- [C] property line 119' north
- [C-1] property line 340' east
- [D] ditch 83' north
- [D-1] ditch 329' east
- [E] overhead power line 98' north
- [F] County Road 32, 101' north

Legend:

- - utility/gas sign
- ⊗ - power pole
- ⊕ - telephone riser
- ⊙ - water manhole
- ⊕ - fire hydrant
- ⊕ - water valve
- ohw— - overhead power wire

Field observations taken
 on 7/23/12 by operator
 John Rice.

Liberty NENW Facility Pads Drawing

Improvements extending
 400' from facility pads

Township 3 North, Range 68 West,
 Section 21: NE $\frac{1}{4}$ NW $\frac{1}{4}$
 Weld County, Colorado

August 3, 2012