

## The Road to Excellence Starts with Safety

Sold To #: 300721	Ship To #: 300721	Quote #:	Sales Order #: 9084269
Customer: WILLIAMS PRODUCTION RMT INC - EBUS	Customer Rep: Moore, Frank		
Well Name: RWF	Well #: 33-31	API/UWI #: 05-045-19780	
Field: Rulison	City (SAP): RIFLE	County/Parish: Garfield	State: Colorado
Lat: N 39.475 deg. OR N 39 deg. 28 min. 31.116 secs.	Long: W 107.929 deg. OR W -108 deg. 4 min. 14.376 secs.		
Contractor: Nabors Industries LTD.	Rig/Platform Name/Num: Nabors 573		
Job Purpose: Cement Surface Casing			
Well Type: Development Well	Job Type: Cement Surface Casing		
Sales Person: MAYO, MARK	Srvc Supervisor: ANGLESTEIN, TROY	MBU ID Emp #: 436099	

## Job Personnel

HES Emp Name	Exp Hrs	Emp #	HES Emp Name	Exp Hrs	Emp #	HES Emp Name	Exp Hrs	Emp #
ANGLESTEIN, TROY Edward WM	6.5	436099	BANKS, BRENT A	6.5	371353	JENSEN, JESSE Robert	6.5	478774
KEANE, JOHN Donovan	6.5	486519						

## Equipment

HES Unit #	Distance-1 way	HES Unit #	Distance-1 way	HES Unit #	Distance-1 way	HES Unit #	Distance-1 way
10592964	60 mile	10744549	60 mile	10867531	60 mile	10989685	60 mile
11360871	60 mile	11542767	60 mile	11583933	60 mile		

## Job Hours

Date	On Location Hours	Operating Hours	Date	On Location Hours	Operating Hours	Date	On Location Hours	Operating Hours
12/20/2011	.5	0	12/21/2011	6	1.5			

TOTAL Total is the sum of each column separately

## Job

Formation Name	Top	Bottom	Called Out	Date	Time	Time Zone
Formation Depth (MD)			On Location	20 - Dec - 2011	19:45	MST
Form Type		BHST	Job Started	20 - Dec - 2011	23:30	MST
Job depth MD	2653. ft	Job Depth TVD	Job Completed	21 - Dec - 2011	03:11	MST
Water Depth		Wk Ht Above Floor	Departed Loc	21 - Dec - 2011	04:30	MST
Perforation Depth (MD)	From	To			06:00	MST

## Well Data

Description	New / Used	Max pressure psig	Size in	ID in	Weight lbm/ft	Thread	Grade	Top MD ft	Bottom MD ft	Top TVD ft	Bottom TVD ft
13 1/2" Open Hole				2650.				.	2653.		
9 5/8" Surface Casing	New		9.625	9.001	32.3		H-40	.	2641.		

Sales/Rental/3<sup>rd</sup> Party (HES)

Description	Qty	Qty uom	Depth	Supplier
R/A DENSOMETER W/CHART RECORDER,/JOB,ZI	1	JOB		
PORT. DAS W/CEMWIN;ACQUIRE W/HES, ZI	1	JOB		
ADC (AUTO DENSITY CTRL) SYS, /JOB,ZI	1	JOB		
PLUG,CMTG,TOP,9 5/8,HWE,8.16 MIN/9.06 MA	1	EA		

## Tools and Accessories

Type	Size	Qty	Make	Depth	Type	Size	Qty	Make	Depth	Type	Size	Qty	Make
Guide Shoe					Packer					Top Plug	9.625	1	HES
Float Shoe					Bridge Plug					Bottom Plug			
Float Collar					Retainer					SSR plug set			
Insert Float										Plug Container	9.625	1	HES
Stage Tool										Centralizers			

## Miscellaneous Materials

Gelling Agt	Conc	Surfactant	Conc	Acid Type	Qty	Conc	%
-------------	------	------------	------	-----------	-----	------	---

**HALLIBURTON*****Cementing Job Summary***

Treatment Fld		Conc		Inhibitor		Conc		Sand Type		Size		Qty	
<b>Fluid Data</b>													
<b>Stage/Plug #: 1</b>													
Fluid #	Stage Type	Fluid Name			Qty	Qty uom	Mixing Density lbm/gal	Yield ft <sup>3</sup> /sk	Mix Fluid Gal/sk	Rate bbl/min	Total Mix Fluid Gal/sk		
1	Water Spacer				20.00	bbl	8.34	.0	.0	6			
2	VersaCem Lead Cement	VERSACEM (TM) SYSTEM (452010)			420.0	sacks	12.3	2.38	13.75	8	13.75		
		13.75 Gal			FRESH WATER								
3	VersaCem Tail Cement	VERSACEM (TM) SYSTEM (452010)			160.0	sacks	12.8	2.11	11.75	8	11.75		
		11.75 Gal			FRESH WATER								
4	Displacement Fluid				205.00	bbl	8.34	.0	.0	10			
<b>Calculated Values</b>				<b>Pressures</b>			<b>Volumes</b>						
Displacement	204.4	Shut In: Instant				Lost Returns	0	Cement Slurry	238.1	Pad			
Top Of Cement	SURFACE	5 Min				Cement Returns	80	Actual Displacement	204.4	Treatment			
Frac Gradient		15 Min				Spacers	20	Load and Breakdown		Total Job	463		
<b>Rates</b>													
Circulating	11	Mixing			8	Displacement	10	Avg. Job			8		
Cement Left In Pipe	Amount	43.25 ft	Reason	Shoe Joint									
Frac Ring # 1 @	ID	Frac ring # 2 @	ID	Frac Ring # 3 @	ID	Frac Ring # 4 @	ID						
The Information Stated Herein Is Correct					Customer Representative Signature								

# HALLIBURTON

## Cementing Job Log

*The Road to Excellence Starts with Safety*

Sold To #: 300721	Ship To #: 300721	Quote #:	Sales Order #: 9084269
Customer: WILLIAMS PRODUCTION RMT INC - EBUS	Customer Rep: Moore, Frank		
Well Name: RWF	Well #: 33-31	API/UWI #: 05-045-19780	
Field: Rulison	City (SAP): RIFLE	County/Parish: Garfield	State: Colorado
Legal Description:			
Lat: N 39.475 deg. OR N 39 deg. 28 min. 31.116 secs.		Long: W 107.929 deg. OR W -108 deg. 4 min. 14.376 secs.	
Contractor: Nabors Industries LTD.	Rig/Platform Name/Num: Nabors 573		
Job Purpose: Cement Surface Casing	Ticket Amount:		
Well Type: Development Well	Job Type: Cement Surface Casing		
Sales Person: MAYO, MARK	Srv Supervisor: ANGLESTEIN, TROY	MBU ID Emp #: 436099	

Activity Description	Date/Time	Cht #	Rate bbl/ min	Volume bbl		Pressure psig		Comments
				Stage	Total	Tubing	Casing	
Call Out	12/20/2011 19:45							
Pre-Convoy Safety Meeting	12/20/2011 21:30							ALL HES EMPLOYEES
Arrive At Loc	12/20/2011 23:30							RIG STILL RUNNING CASING CIRCULATED FOR 1 HOUR
Assessment Of Location Safety Meeting	12/20/2011 23:45							ALL HES EMPLOYEES
Rig-Up Equipment	12/21/2011 01:30							1 HT 400 PUMP TRUCK, 2 660 BULK TRUCKS, 1 9.625 QUICK LATCH PLUG CONTAINER, 1 F550 P/U
Pre-Job Safety Meeting	12/21/2011 02:50							ALL HES EMPLOYEES, RIG CREW, CO REP.
Start Job	12/21/2011 03:11							9.625 CASING SET AT 2641', FC 2597.75', TD: 2653', OPEN HOLE 13.5", MUD WT 11 PPG, 800 BBLS OF H2O ON LOCATION, WATER SAMPLE SUBMITTED.
Pump Water	12/21/2011 03:11		2	2			247.0	FILL LINES
Pressure Test	12/21/2011 03:13		0.5	0.5		3161. 0		NO LEAKS
Pump Spacer 1	12/21/2011 03:17		4	20			420.0	FRESH WATER
Activity Description	Date/Time	Cht #	Rate bbl/ min	Volume bbl		Pressure psig		Comments
				Stage	Total	Tubing	Casing	

Sold To #: 300721

Ship To #: 300721

Quote #:

Sales Order #:

9084269

SUMMIT Version: 7.2.27

Sunday, December 25, 2011 04:31:00

# HALLIBURTON

## Cementing Job Log

Pump Lead Cement	12/21/2011 03:24		8	178			350.0	420 SKS VERSACEM CMT TO BE MIXED AT 12.3 PPG, 2.38 YIELD, 13.75 GAL/SK, CMT TO BE WEIGHED VIA PRESSURE BALANCED MUD SCALES WET AND DRY SAMPLES SUBMITTED
Pump Tail Cement	12/21/2011 03:47		8	60.1			313.0	160 SKS VERSACEM CMT TO BE MIXED AT 12.8 PPG, 2.11 YIELD, 11.75 GAL/SK, CMT TO BE WEIGHED VIA PRESSURE BALANCED MUD SCALES. WET AND DRY SAMPLES SUBMITTED.
Shutdown	12/21/2011 03:56							FOR NO MORE THEN 5 MINUTES,
Drop Plug	12/21/2011 04:00							PLUG LAUNCHED
Pump Displacement	12/21/2011 04:01		10	204.4			895.0	FRESHWATER
Cement Returns to Surface	12/21/2011 04:11		10	124			620.0	80 BBLS OF CEMENT TO SURFACE.
Slow Rate	12/21/2011 04:22		2	194			530.0	10 BBLS PRIOR TO CALCULATED DISPLACEMENT
Bump Plug	12/21/2011 04:26		2	204.4			550.0	PLUG LANDED AT 1020 HELD FOR TWO MINUTES
Check Floats	12/21/2011 04:28							FLOATS HOLDING, NO ANNULAR FLOW AT SHAKERS NOTED
End Job	12/21/2011 04:30							THANK YOU FOR USING HES FROM TROY ANGLESTEIN AND CREW.
Post-Job Safety Meeting (Pre Rig-Down)	12/21/2011 04:35							ALL HES EMPLOYEES
Rig-Down Equipment	12/21/2011 05:00							SAFELY
Pre-Convoy Safety Meeting	12/21/2011 05:50							ALL HES EMPLOYEES
Crew Leave Location	12/21/2011 06:00							SITE WAS AS CLEAN AS WHEN WE ARRIVED

Sold To # : 300721

Ship To # :300721

Quote # :

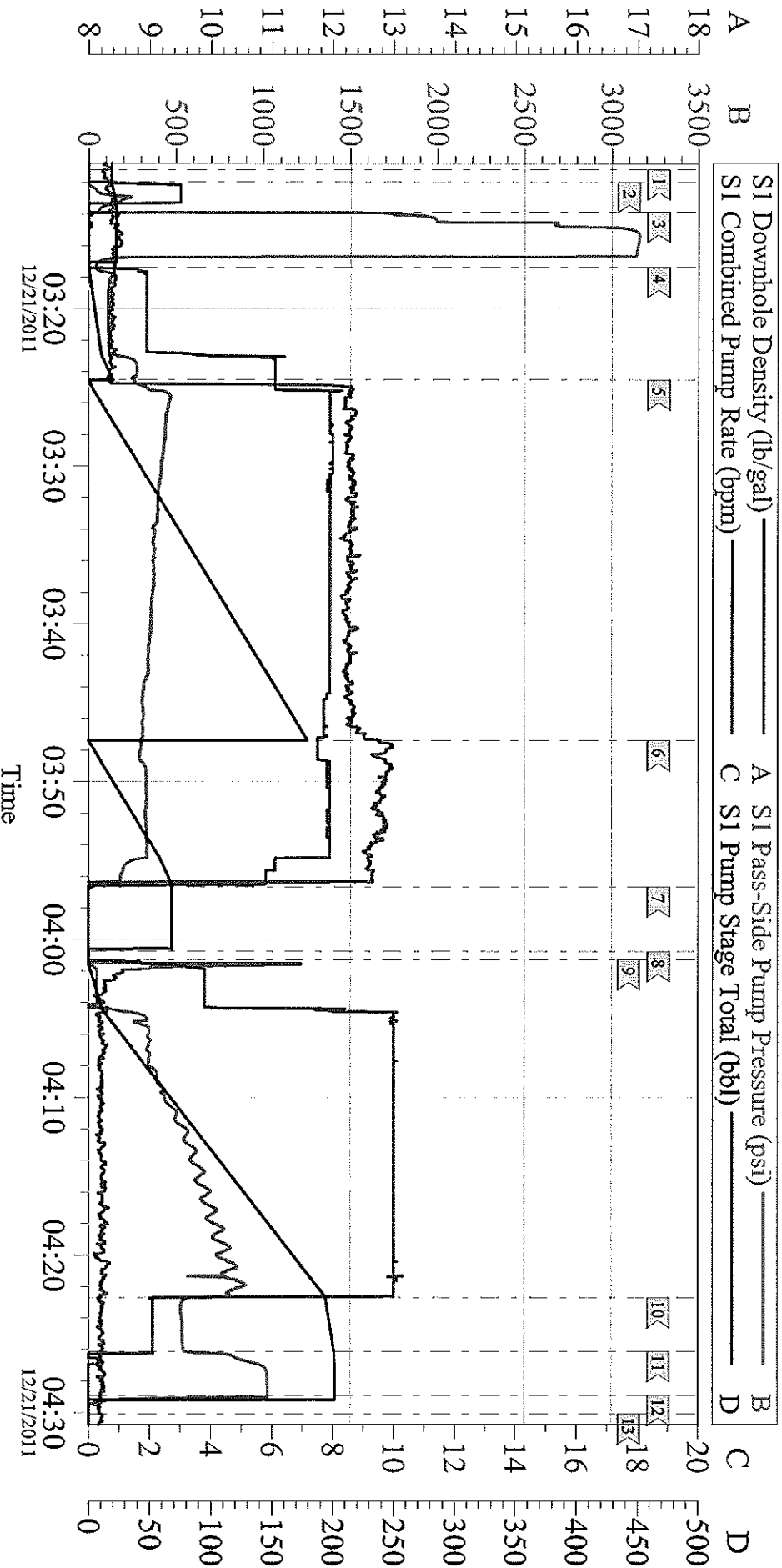
Sales Order # :

9084269

SUMMIT Version: 7.2.27

Sunday, December 25, 2011 04:31:00

# WILLIAMS RWF 33-31 SURFACE



Local Event Log

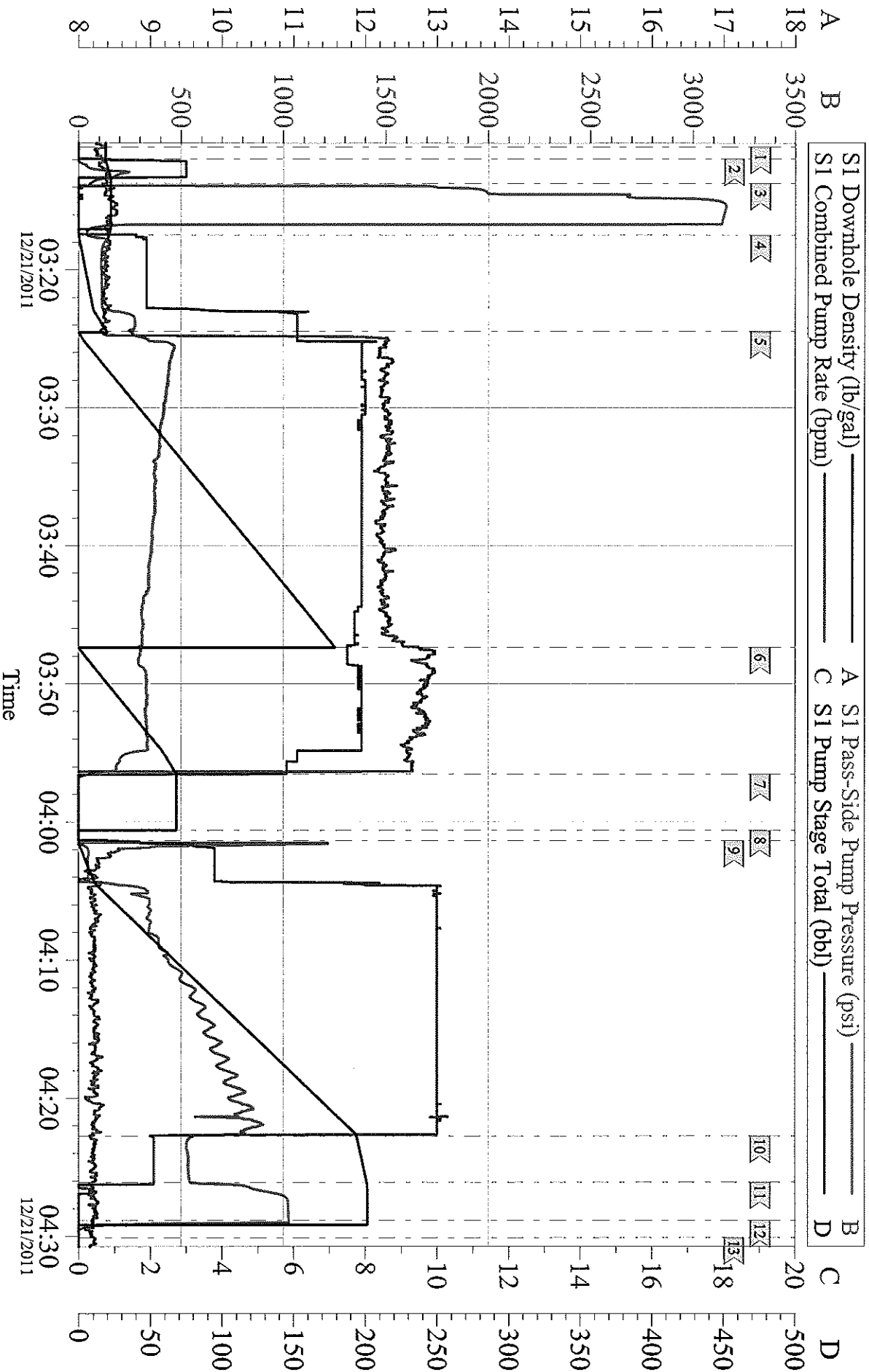
1 START JOB	03:11:10	2 FILL LINES	03:11:57	3 TEST LINES	03:13:52
4 PUMP H2O SPACER	03:17:22	5 PUMP LEAD CEMENT	03:24:31	6 PUMP TAIL CEMENT	03:47:24
7 SHUTDOWN	03:56:39	8 DROP PLUG	04:00:45	9 PUMP DISPLACEMENT	04:01:17
10 SLOW RATE	04:22:43	11 BUMP PLUG	04:26:08	12 CHECK FLOATS	04:28:55
13 END JOB	04:30:07				

Customer: WILLIAMS  
 Well Description: RWF 44-31  
 Company Rep: FRANK MOORE

Job Date: 21-Dec-2011  
 Job Type: SURFACE  
 Cement Supervisor: TROY ANGLESTEIN

Sales Order #: 9084269  
 ADC Used: YES  
 Edit #: 1 BRENT BANKS

# WILLIAMS RWF 33-31 SURFACE



Customer: WILLIAMS  
Well Description: RWF 33-31  
Company Rep: FRANK MOORE

Job Date: 21-Dec-2011  
Job Type: SURFACE  
Cement Supervisor: TROY ANGLESTEIN

Sales Order #: 9084269  
ADC Used: YES  
Elite #: 1 BRENT BANKS