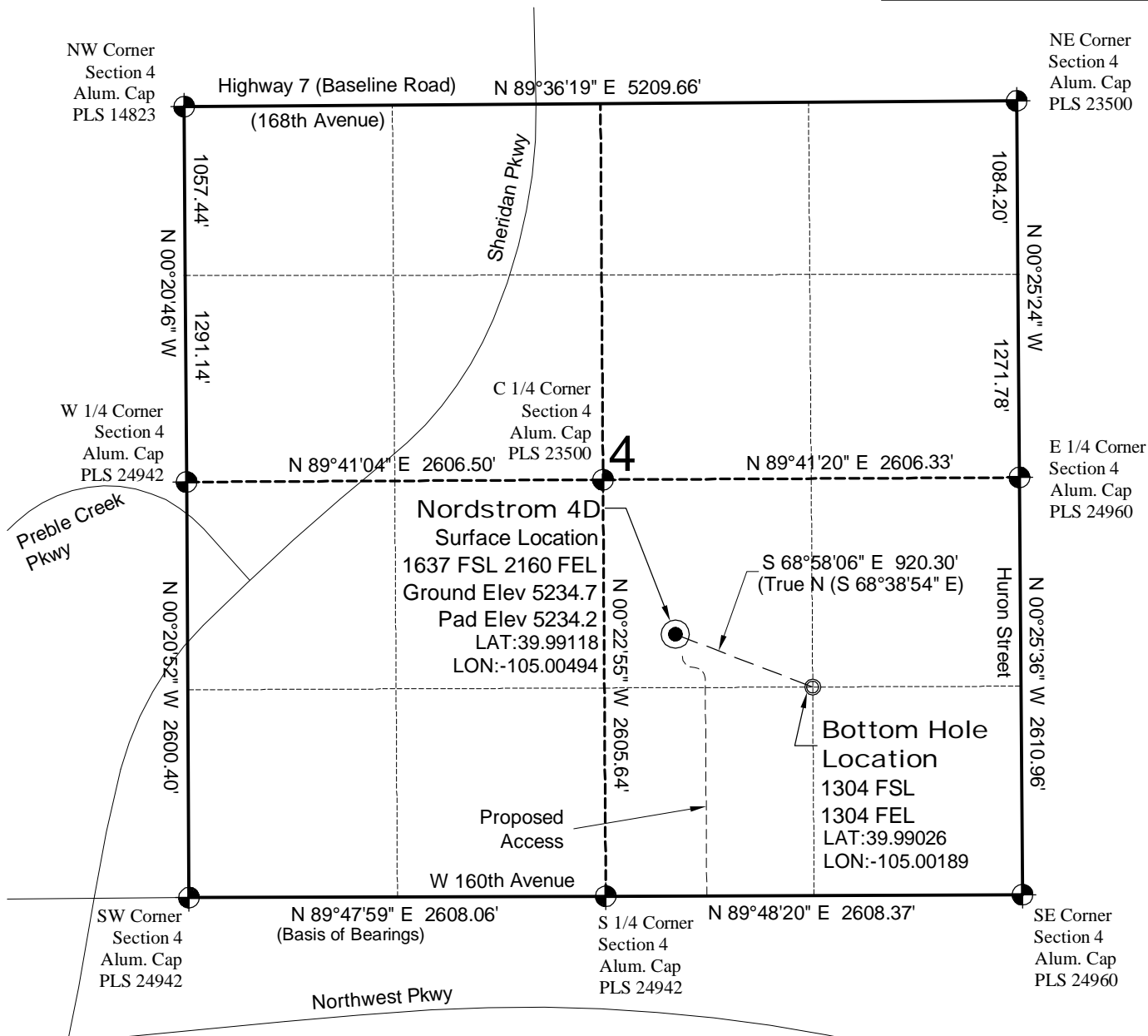


# WELL LOCATION MAP

**NORDSTROM  
5-4 PAD**

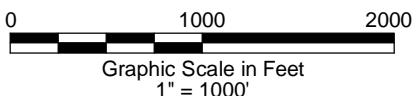


## SURVEYOR'S STATEMENT

The undersigned hereby states that the well location shown hereon was staked on the ground based on existing monumentation and/or physical evidence found in the field and is correct to the best of my knowledge, information and belief.

## NOTES

- 1.) Coordinates based on NGS control point "LUCY" with an elevation of 5297. NAVD 1988.
- 2.) All directions, distances, and dimensions shown hereon are based on coordinates from the "Colorado coordinate system of 1983 north zone" (article 52 of title 38, C.R.S.).
- 3.) All section line dimensions shown hereon are based on field measurements of existing monuments and/or physical evidence found in the field unless otherwise indicated. Refer to land survey plats deposited in Broomfield County & COGCC Well Plats.
- 4.) Physical features shown hereon are for graphical representation only.
- 5.) See Form 2A for visible improvements within 400' of wellhead.
- 6.) Distances to nearest section lines are measured perpendicularly.
- 7.) This is not a land survey nor land survey plat.
- 8.) Date of Survey 3/21/12; Date of Drawing 7/31/12. REV 1  
 PDOP Reading: 1.9 Instrument Operator: Marc Woodard



**GEO SURV**  
 LAND SURVEYING AND MAPPING  
 LAFAYETTE - WINTER PARK  
 Ph 303 666 0379 Fx 303 665 6320

**SOVEREIGN OPERATING CO., LLC**  
**NORDSTROM 4D**  
 SL NW1/4 SE1/4 SEC.4 T1S R68W  
 BHL SE1/4 SEC.4 T1S R68W  
 6th PM BROOMFIELD COUNTY COLORADO