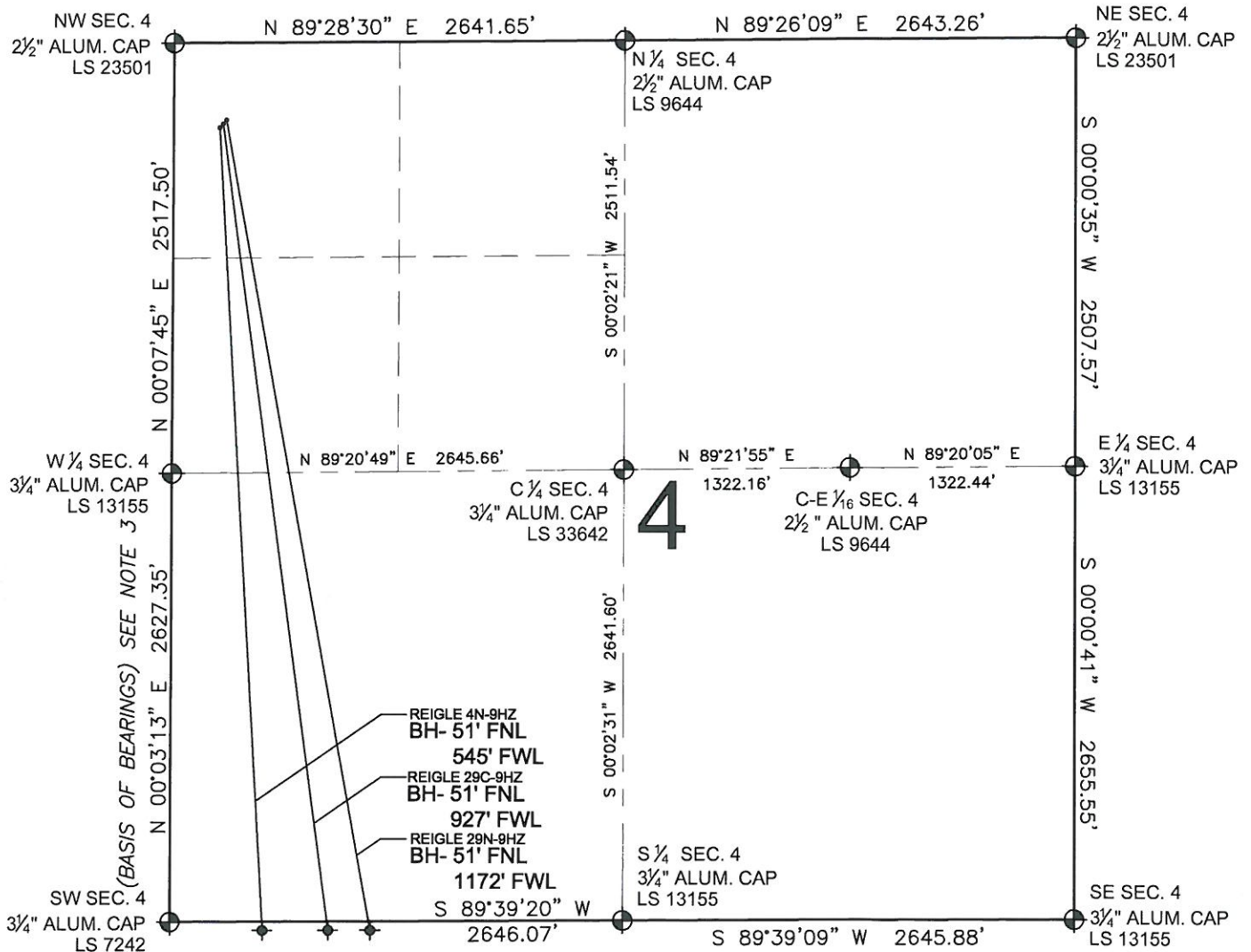


PAD DRAWING: REIGLE 3 PAD

SECTION 4, TOWNSHIP 2 NORTH, RANGE 65 WEST, 6TH P.M.



LEGEND

- ⊕ = EXISTING MONUMENT
- ⬮ = BOTTOM HOLE
- BH= BOTTOM HOLE
- = PROPOSED WELL
- ◆ = EXISTING WELL

NOTES:

- THIS FIELD SURVEY CONFORMS TO THE MINIMUM STANDARDS SET BY THE C.O.G.C.C., RULE NO. 215
- HORIZONTAL POSITIONS AND ORTHOMETRIC ELEVATIONS SHOWN AT THE WELL HEAD, ARE BASED ON GPS-RTK POSITIONS DERIVED FROM MINIMUM 2-HOUR STATIC OBSERVATIONS CORRECTED BY THE NATIONAL GEODETIC SURVEY ONLINE POSITIONING USER SERVICE, O.P.U.S. DATUM: HORIZONTAL = NAD83/2007, VERTICAL = NAVD88
- THE BASIS OF BEARINGS ARE STATE PLANE COORDINATE SYSTEM GRID BEARINGS SHOWN HEREON BETWEEN THE DESCRIBED MONUMENTS SHOWN HEREON.
- GRID DISTANCES ARE SHOWN, AS MEASURED IN THE FIELD, WITH TIES TO WELLS MEASURED PERPENDICULAR TO SECTION LINES.

NOTES:

- REIGLE 4N-9HZ TO BE AT 496' FNL, 272' FWL.
- BOTTOM HOLE AT 51' FNL & 545' FWL.
- REIGLE 29C-9HZ TO BE AT 473' FNL, 291' FWL.
- BOTTOM HOLE AT 51' FNL & 927' FWL.
- REIGLE 29N-9HZ TO BE AT 451' FNL, 311' FWL.
- BOTTOM HOLE AT 51' FNL & 1172' FWL.

PREPARED BY:



KERR-MCGEE OIL & GAS ONSHORE LP

FIELD DATE: 06-28-12	PAD NAME: REIGLE 3 PAD
DRAWING DATE: 07-30-12	SURFACE LOCATION: WELD COUNTY, COLORADO
BY: MCH	REV: SVT
NW 1/4 NW 1/4, SEC. 4, T2N, R65W, 6TH P.M.	

