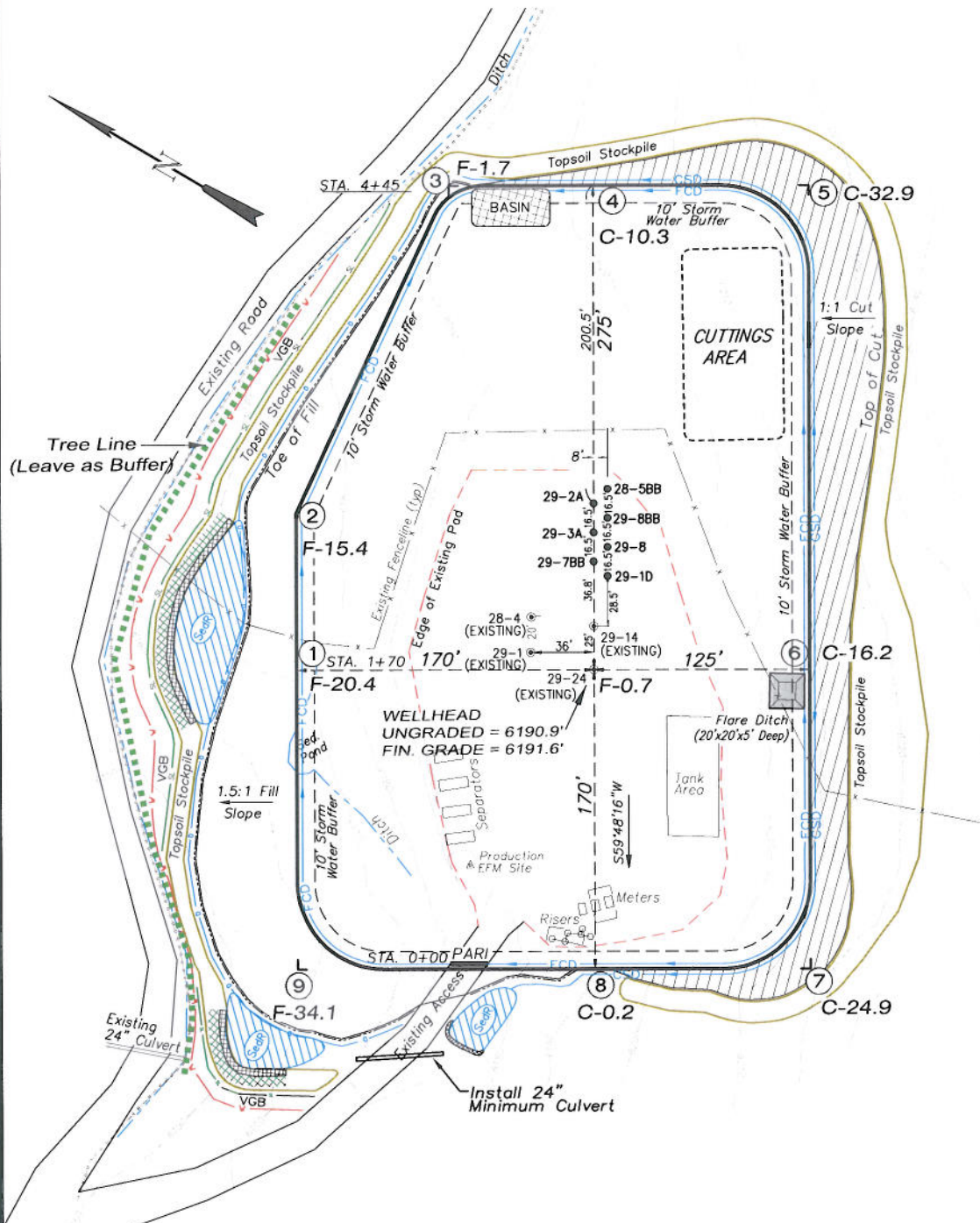


Encana Oil & Gas (USA) Inc.
PA-29 Well Pad
 NE1/4 NE1/4, SECTION 29, T7S, R95W, 6th P.M.
 WELL PAD LAYOUT

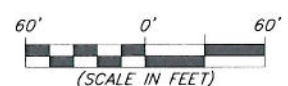


Total Surface Disturbance = 4.69 Acres
 (See Sheet 4 for Details)

- NOTES:
- (1) Slope Track and/or Terrace at Slopes and Piles
 - (2) Erosion Control & Seed Topsoil
 - (3) Erosion Control & Seed Outside
 - (4) Slope away from Substructure Areas 1% to 3% to Flow Control

- LEGEND
- SL = SLASH
 - ST = SEDIMENT TRAP
 - SeR = SEDIMENT RESERVOIR
 - R.O.D. = RUN-ON DIVERSION
 - W = PERIMETER CONTROL (WATTLES)
 - CSD = CUT SLOPE DIVERSION (BERM TOE OF CUT SLOPE)
 - D = FILL DIVERSION TO SEDIMENT TRAP
 - VGB = VEGETATION BUFFER (UNDISTURBED LAND INSIDE PC)
 - FCD = FLOW CONTROL DITCH
 - PARI = PAD/ACCESS ROAD INTERFACE
 - LEVEL SPREADER
 - TDE BERM (PLACED AT TOE OF ALL FILL SLOPES/STOCKPILES)
 - TOPSOIL BERM
 - SEED, ECB & FLEX
 - SEED

SURFACE DISTURBANCE (IN ACRES)	
Well Pad	2.77
Side Slopes	0.86
Topsoil & Waste Material	1.06
TOTAL	4.69



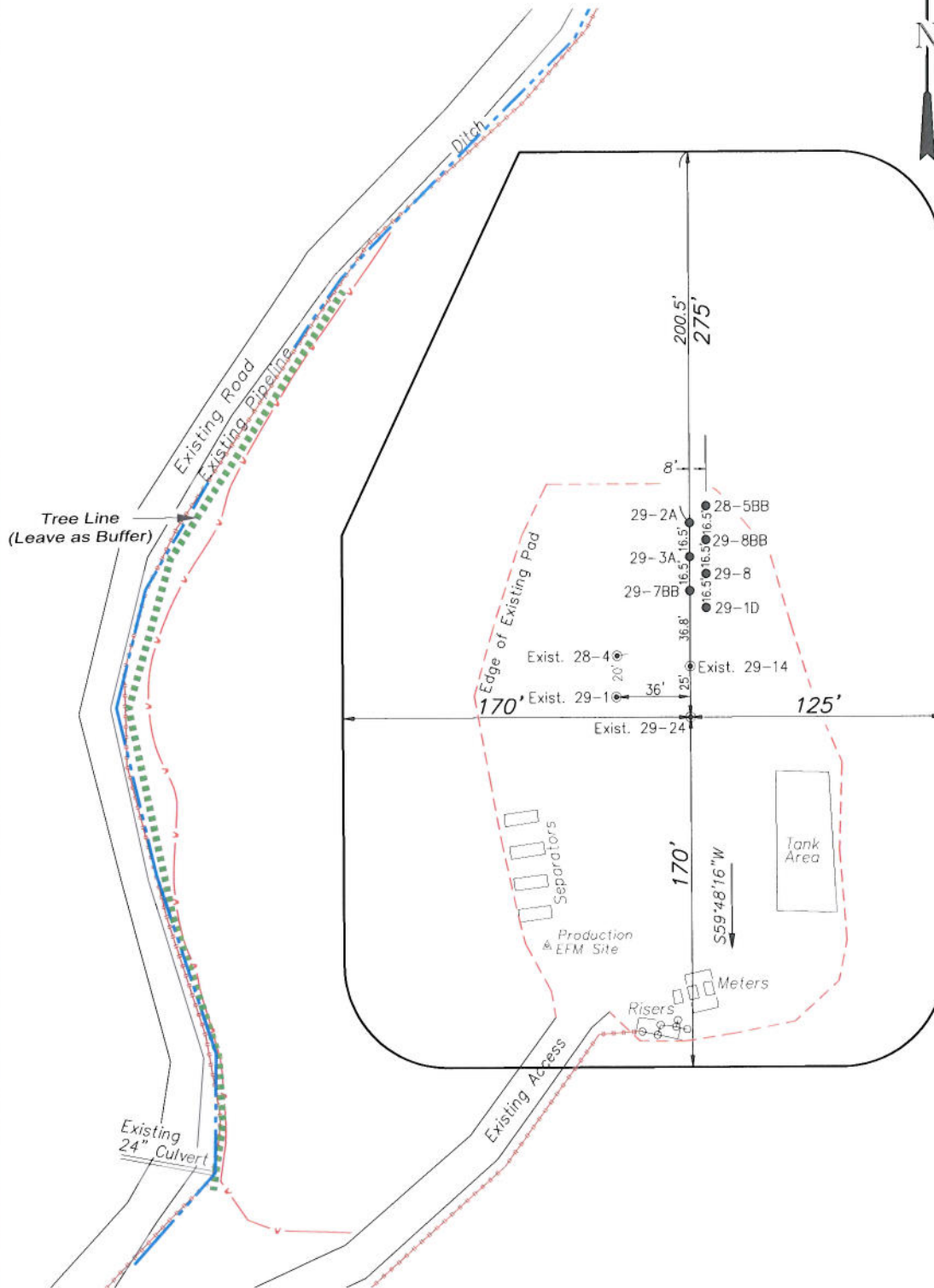
906 Main Street
 Evanston, Wyoming 82930
 Phone No. (307) 789-4545

Well Pad Layout		Scale: 1" = 60'	SHEET
Project No.	10-04-14	Date Surveyed:	4/06/10
Date	11/28/11	Latest Revision	4/23/12
Drawn:		Date:	4/23/12
			3 OF 10

Encana Oil & Gas (USA) Inc.

PA-29 Well Pad

NE1/4 NE1/4, SECTION 29, T7S, R95W, 6th P.M.
PRE-CONSTRUCTION PLAT



Total Surface Disturbance = 4.69 Acres
(See Sheet 4 for Details)

NOTES:

- (1) Slope Track and/or Terrace all Slopes and Piles
- (2) Erosion Control & Seed Topsoil
- (3) Erosion Control & Seed Outside
- (4) Slope away from Substructure Areas 1% to 3% to Flow Control

LEGEND

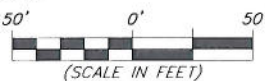
- SL = SLASH
- ST = SEDIMENT TRAP
- SR = SEDIMENT RESERVOIR
- R.O.D. = RUN-ON DIVERSION
- PC = PERIMETER CONTROL (WATTLES)
- CSD = CUT SLOPE DIVERSION (BERM TOE OF CUT SLOPE)
- D = FILL DIVERSION TO SEDIMENT TRAP
- VCB = VEGETATION BUFFER (UNDISTURBED LAND INSIDE PC)
- FCD = FLOW CONTROL DITCH
- PARI = PAD/ACCESS ROAD INTERFACE
- LS = LEVEL SPREADER
- TOE BERM (PLACED AT TOE OF ALL FILL SLOPES/STOCKPILES)
- TOPSOIL BERM
- SEED, ECB & FLEX
- SEED

PRE-CONSTRUCTION PHASE COMPLETE,
AUTHORIZATION TO CONTINUE
CONSTRUCTION.

SIGNATURE: _____



906 Main Street
Evanston, Wyoming 82930
Phone No. (307) 789-4545

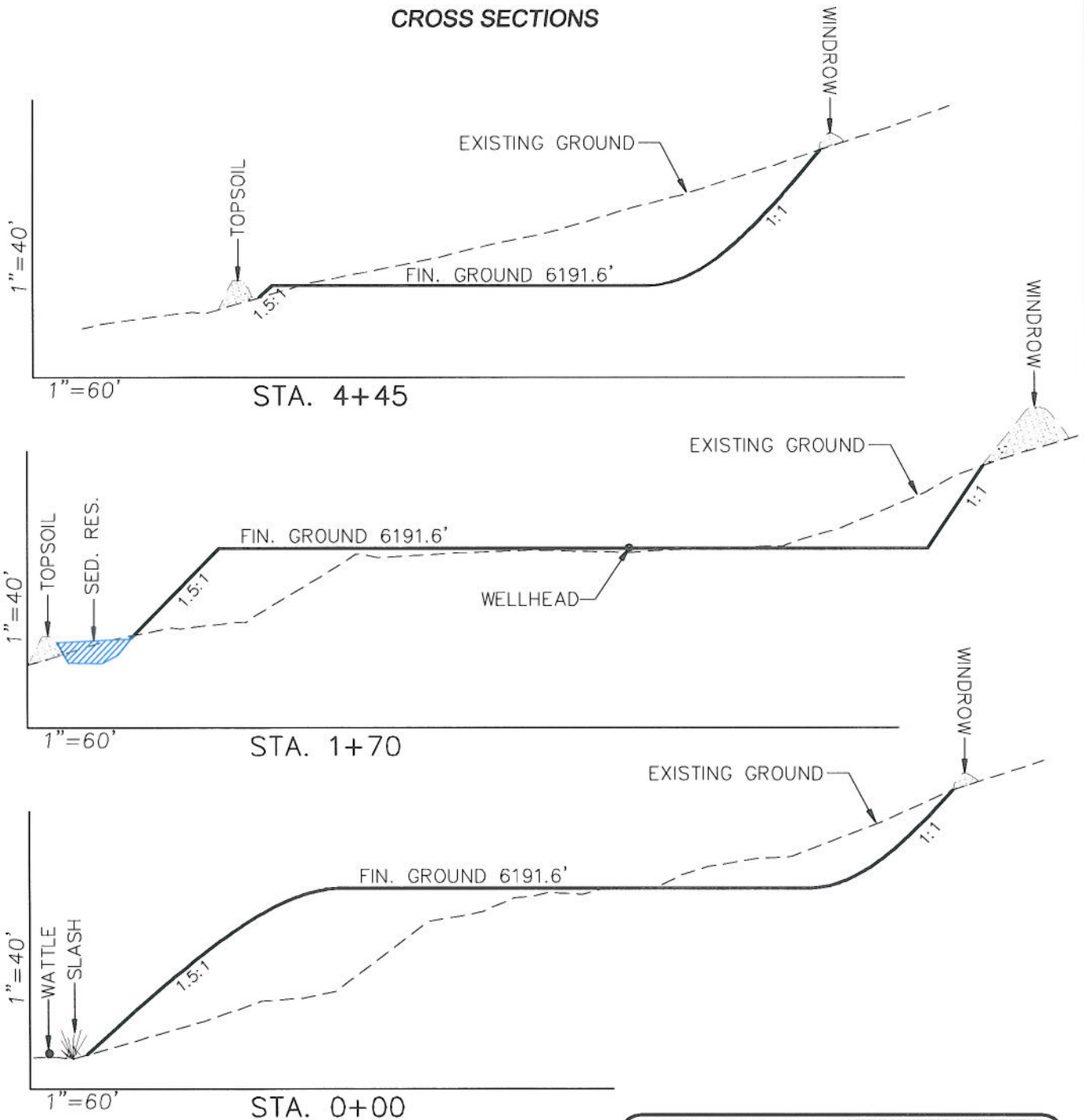


Pre-Construction		Scale: 1" = 50'	SHEET
Project No.	10-04-14	Date Surveyed: 4/06/10	3a
Date Drawn: 11/28/11		Latest Revision Date: 4/23/12	
			OF 10

Encana Oil & Gas (USA) Inc.

Well Pad (PA-29)

CROSS SECTIONS



SURFACE DISTURBANCE (IN ACRES)

Well Pad	2.77
Side Slopes	0.86
Topsoil & Waste Material	1.06
TOTAL	4.69

NOTE:
ALL CUT SLOPES ARE
1:1 AND FILL SLOPES
ARE AT 1.5:1 RATIO
UNLESS OTHERWISE
NOTED.

EARTHWORK QUANTITIES

(in Cubic Yards w/ 0% shrink/swell)

ITEM	CUT	FILL	6" TOPSOIL	EXCESS
PAD	23177	23177	Topsoil not included in Excavation	0
PIT	0	0		0
TOTALS	23177	23177	2300	0



906 Main Street
Evanston, Wyoming 82930
Phone No. (307) 789-4545

Cross Sections

Project No. 10-04-14
Date Drawn: 11/28/11

Scale: As Shown

Date Surveyed: 4/06/10
Latest Revision Date: 4/23/12

SHEET

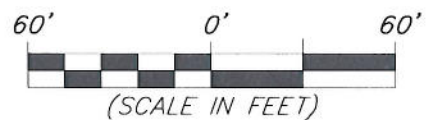
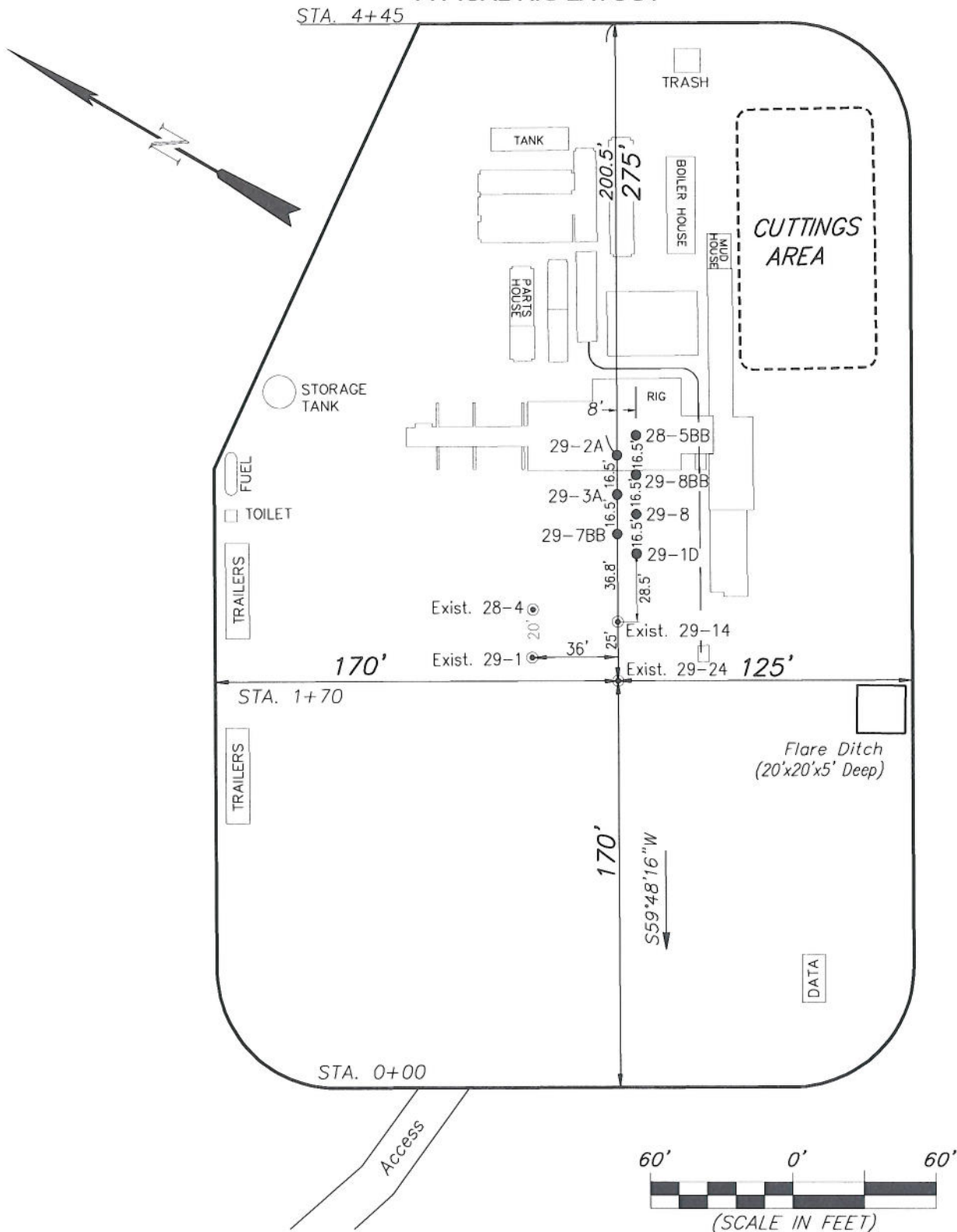
4

OF 10

Encana Oil & Gas (USA) Inc.

Well Pad (PA-29)

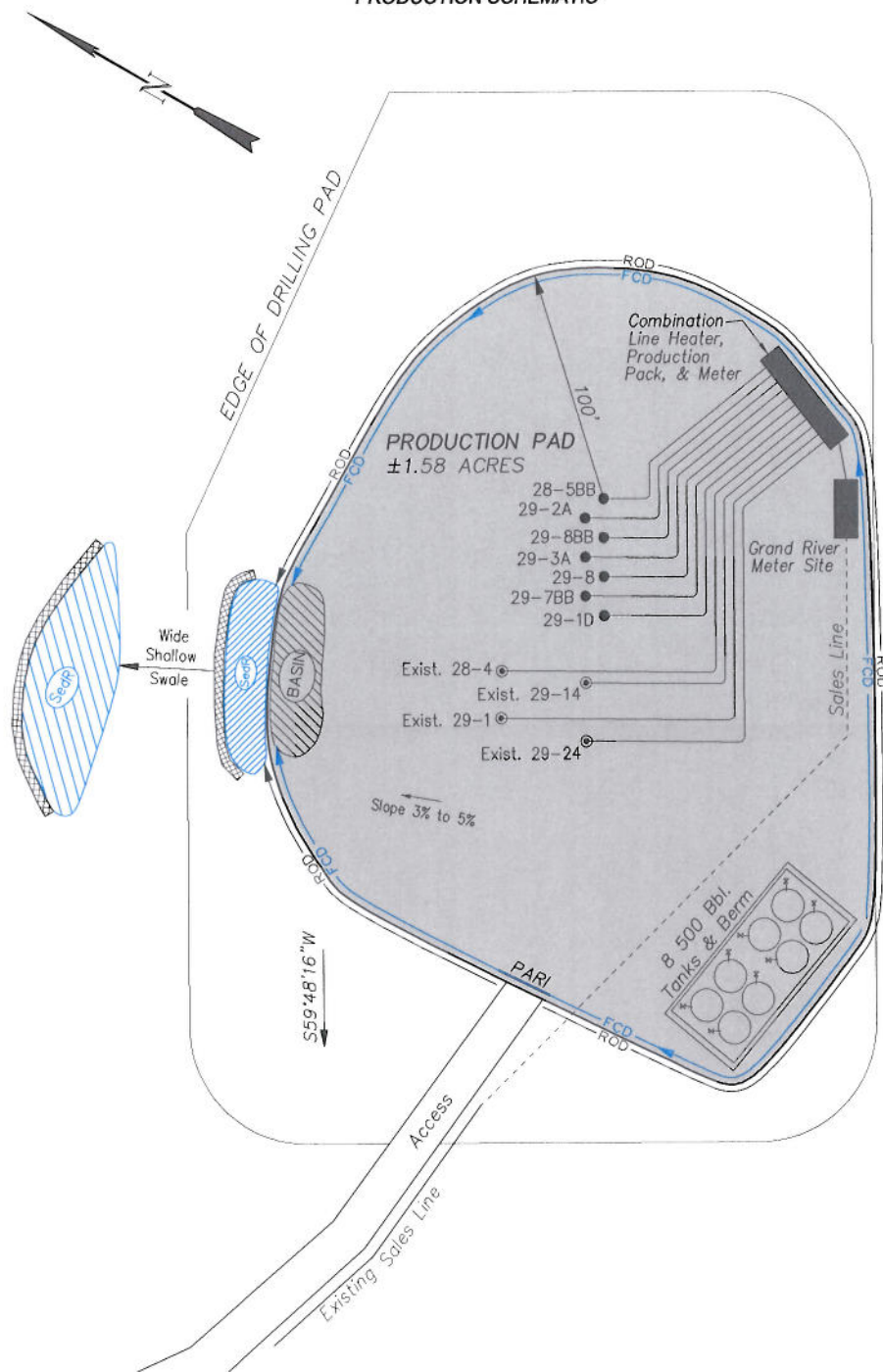
TYPICAL RIG LAYOUT



906 Main Street
Evanston, Wyoming 82930
Phone No. (307) 789-4545

Rig Layout		Scale: 1" = 60'	SHEET
Project No.	10-04-14	Date Surveyed:	4/06/10
Date Drawn:	11/28/11	Latest Revision Date:	4/23/12
			5
			OF 10

Encana Oil & Gas (USA) Inc.
PA-29 Well Pad
PRODUCTION SCHEMATIC



- NOTES:**
1. Set Tanks High so pad Entrance & Tank Area Can Drain to Pad Basin
 2. Gravel Pad 75' from Wells & Around Tanks and Separators
 3. Pad Drains to Pad Basin at a 3% to 5% slope
 4. BMP Selection and Position may change Depending on Actual Conditions Encountered During the Construction Process

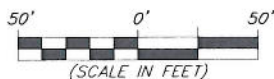
NOTE:
 Actual Equipment Layout and Reclaimed Pad Surface Area May Change due to Production Requirements or Site Conditions.

ESTIMATED AREAS
 RECLAIMED AREA: 1.58 ACRES
 UNRECLAIMED AREA: 3.11 ACRES
 (PRODUCTION PAD)

LEGEND:
 SL = SLASH
 ST = SEDIMENT TRAP
 SedR = SEDIMENT RESERVOIR
 R.O.D. = RUN-ON DIVERSION
 PC = PERIMETER CONTROL (WATTLES)
 CSD = CUT SLOPE DIVERSION (BERM TOE OF CUT SLOPE)
 D = FILL DIVERSION TO SEDIMENT TRAP
 VOB = VEGETATION BUFFER (UNDISTURBED LAND INSIDE PC)
 FCD = FLOW CONTROL DITCH
 PARI = PAD/ACCESS ROAD INTERFACE
 [Pattern] = LEVEL SPREADER
 [Pattern] = TOE BERM (PLACED AT TOE OF ALL FILL SLOPES/STOCKPILES)
 [Pattern] = TOPSOIL BERM
 [Pattern] = SEED, ECR & FLEX
 [Pattern] = SEED

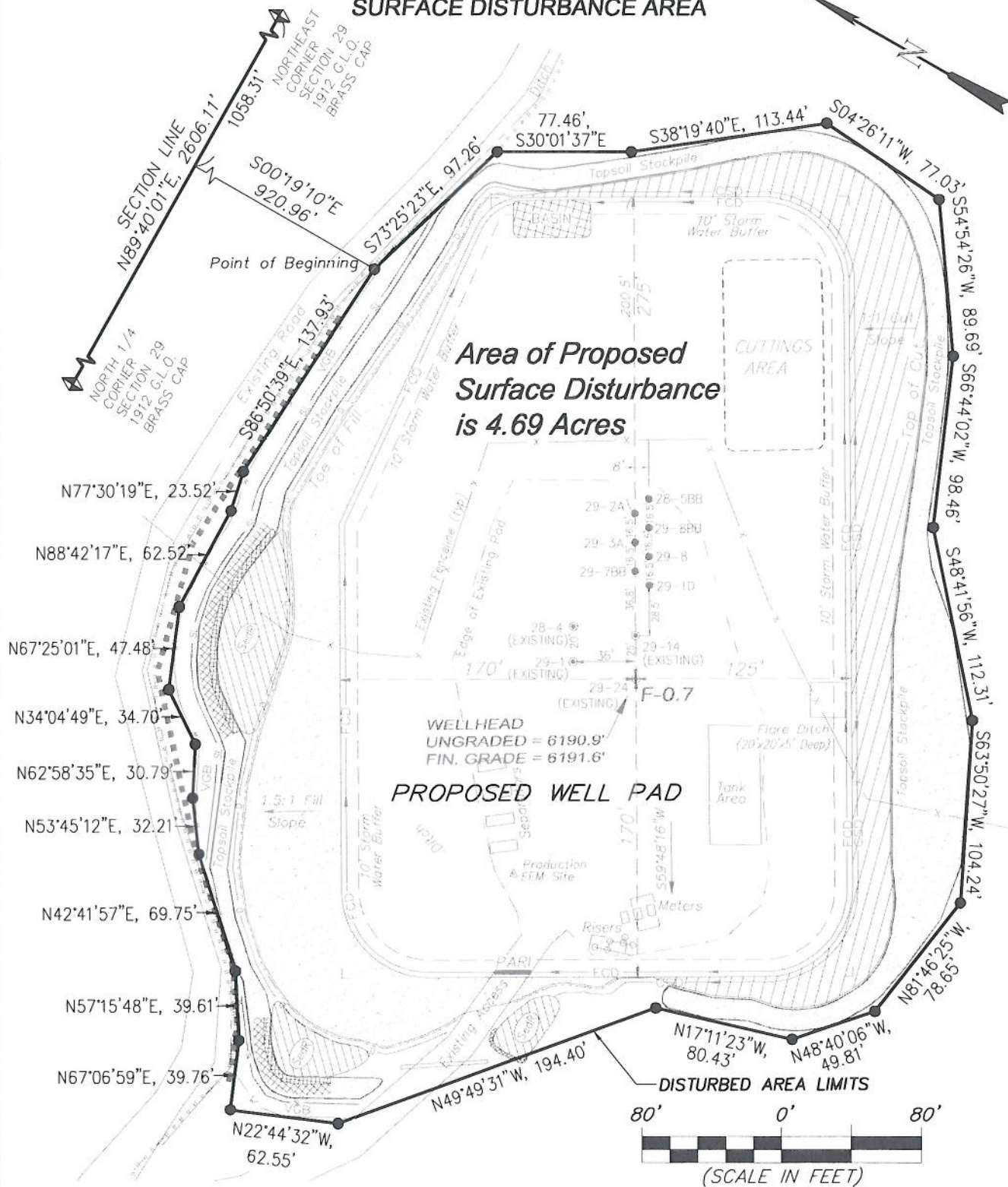


906 Main Street
 Evanston, Wyoming 82930
 Phone No. (307) 789-4545



Production Schematic		Scale: 1" = 50'		SHEET	
Project No.	10-04-14	Date	4/06/10	6	
Date	11/28/11	Surveyed	4/23/12		
Drawn		Latest Revision			
		Date	4/23/12	OF 10	

Encana Oil & Gas (USA) Inc.
Well Pad (PA-29)
Section 29, T7S, R95W, 6th P.M.
SURFACE DISTURBANCE AREA



906 Main Street
 Evanston, Wyoming 82930
 Phone No. (307) 789-4545

Surface Disturbance		Scale: 1" = 80'	SHEET 7 OF 10
Project No.	10-04-14	Date Surveyed: 4/06/10	
Date Drawn:	11/28/11	Latest Revision Date: 4/23/12	