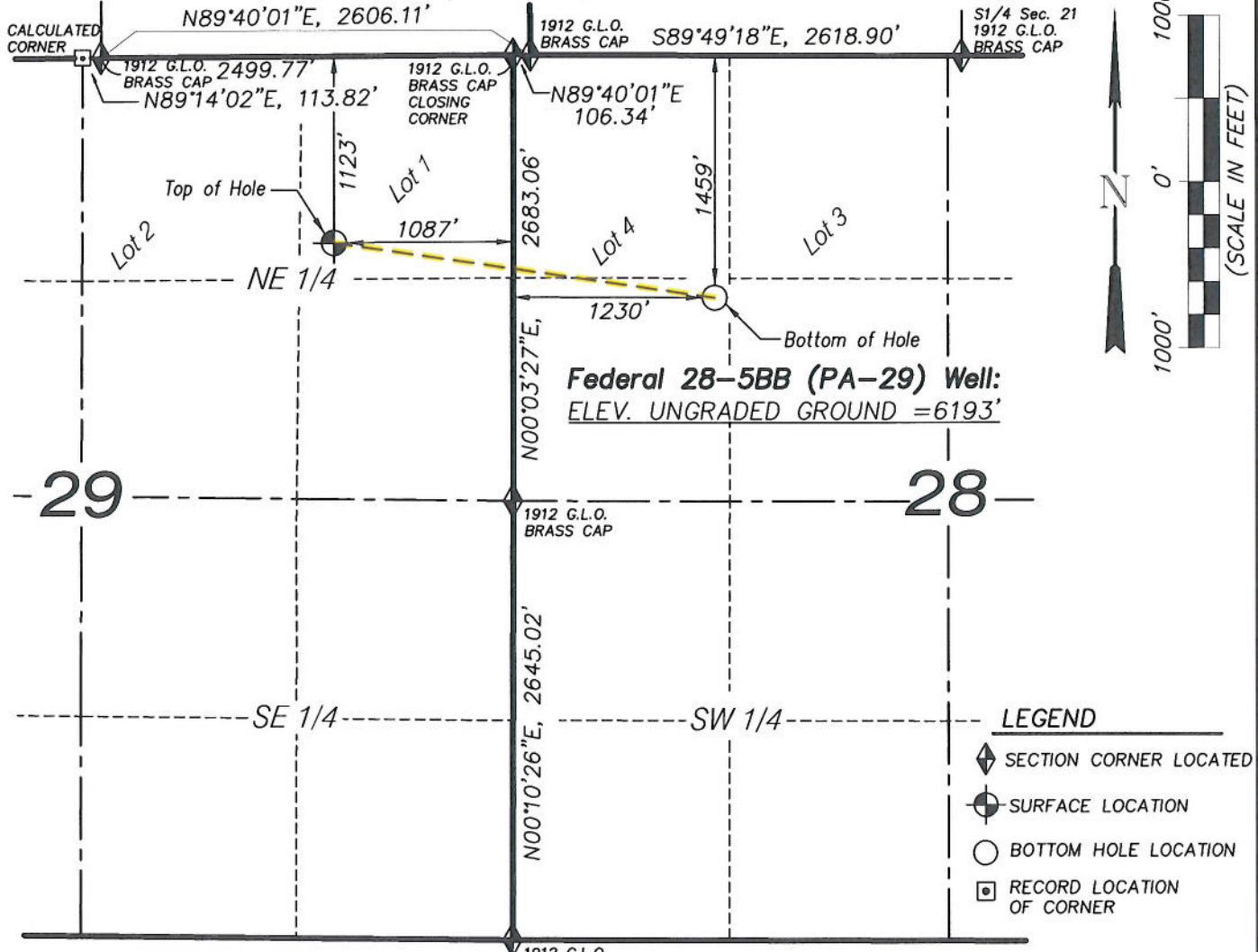


T7S, R95W, 6th P.M.



Federal 28-5BB (PA-29) Well:
 ELEV. UNGRADED GROUND = 6193'

- LEGEND**
- ◆ SECTION CORNER LOCATED
 - ⊙ SURFACE LOCATION
 - BOTTOM HOLE LOCATION
 - ▣ RECORD LOCATION OF CORNER

Federal 28-5BB (PA-29) Well
 (WELLHEAD LOCATION) NAD 83
 LATITUDE = 39.412673° N
 LONGITUDE = 108.015459° W
 (BOTTOM HOLE LOCATION) NAD 83
 LATITUDE = 39.411781° N
 LONGITUDE = 108.007261° W

CERTIFICATE OF SURVEYOR
 I, TED TAGGART OF FRUITA, COLORADO HEREBY CERTIFY THAT THIS MAP WAS MADE FROM NOTES TAKEN DURING AN ACTUAL SURVEY MADE BY ME OR UNDER MY DIRECTION FOR ENCANA OIL & GAS (USA) INC. AND THAT THIS LOCATION HAS BEEN STAKED ON THE GROUND AS SHOWN HEREON.



906 Main Street
 Evanston, Wyoming 82930
 Phone No. (307) 789-4545



- NOTES**
1. WELL FOOTAGES ARE MEASURED AT RIGHT ANGLES TO SECTION LINES.
 2. BASIS OF BEARING: GEODETIC- BASED ON GPS OBSERVATIONS.
 3. ELEVATIONS BASED ON GPS OBSERVATIONS, NAVD 88 (GEOID 03), POST PROCESSED USING NGS OPUS.
 4. THE BOTTOM HOLE BEARS S81°49'18"E, 2340' FROM TOP OF HOLE.
 5. SEE ADDENDUM TO LEGAL PLAT (SHEET 1h) FOR VISIBLE IMPROVEMENTS WITHIN 400 FEET OF THE PROPOSED OIL & GAS LOCATION.
 6. CONTROL FOR SURVEY WAS ESTABLISHED USING DIFFERENTIALLY CORRECTED GPS FROM AN OPUS BASED CONTROL NETWORK. WELL LOCATION WAS ESTABLISHED USING NON-GPS CONVENTIONAL METHODS, THEREFORE NO PPOF READING WAS TAKEN.

MAP to ACCOMPANY
 APPLICATION for PERMIT to DRILL
 Encana Oil & Gas (USA) Inc.
 Federal 28-5BB (PA-29) Well

NE1/4 NE1/4, SECTION 29
 T7S, R95W, 6th P.M.
 GARFIELD COUNTY, COLORADO

Location Plat		Scale: 1" = 1000'	SHEET 1a OF 10	
Project No.	10-04-14	Date Surveyed:		4/06/10
Date Drawn:	11/28/11	Latest Revision Date:		6/11/12