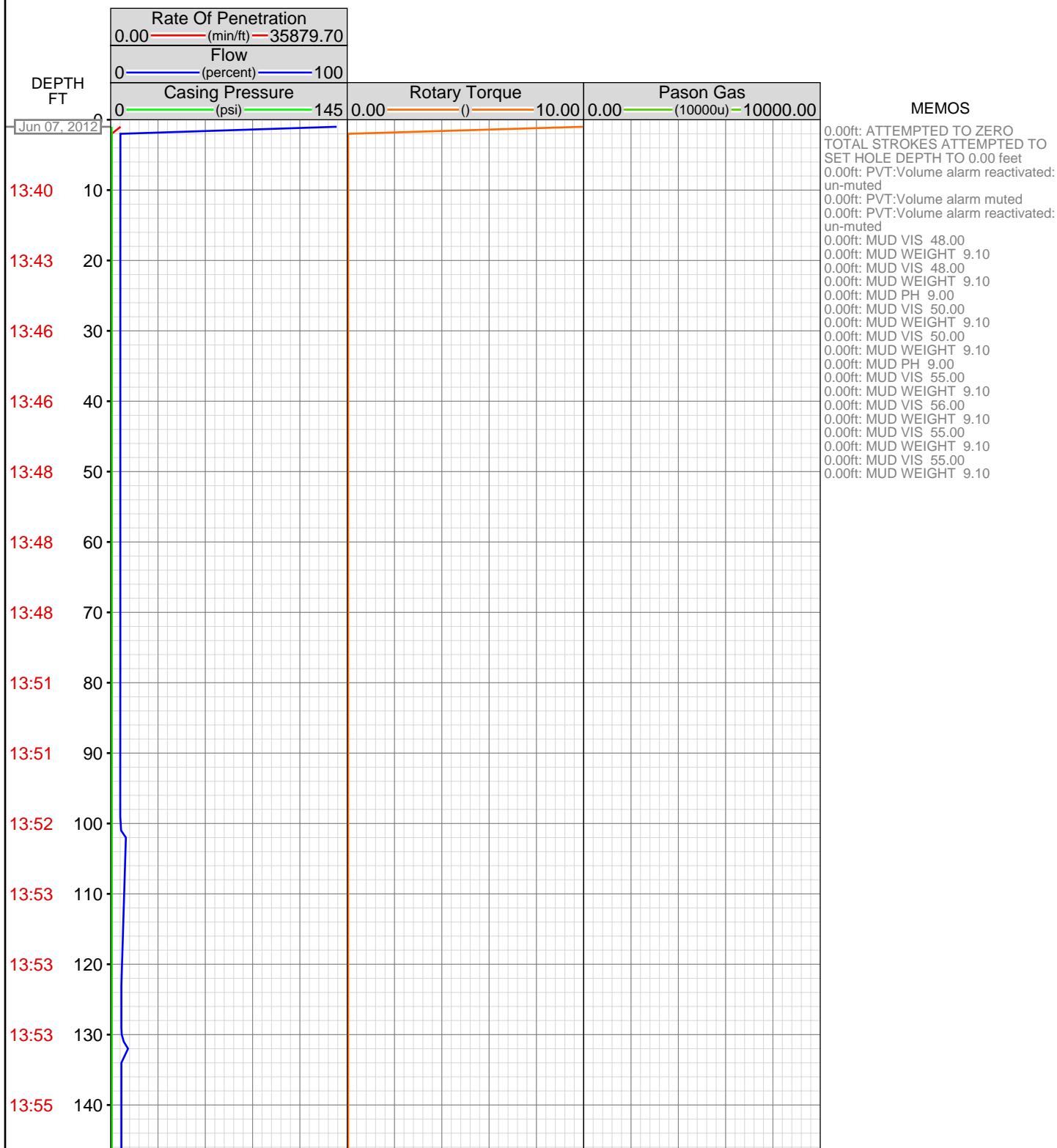


DataHub EDR Log

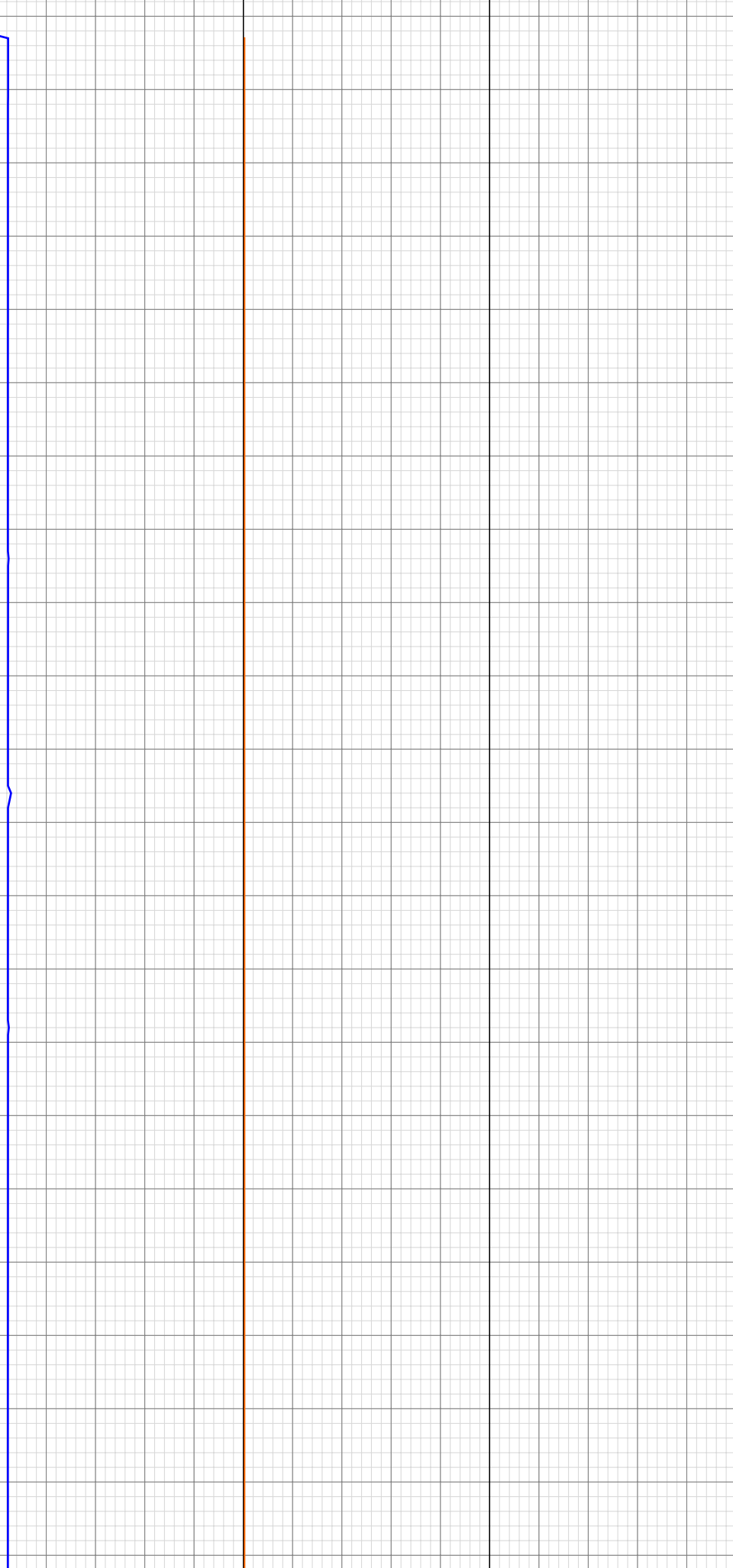
Tue Sep 18, 2012 08:04:44
Well Dossier 1339004690
Marilyn Tucker

OPERATOR: EnCana Oil & Gas (USA), Inc.
WELL: Powell DHS 3C-23 H234101
FIELD:
LOCATION:
COUNTRY: USA
RIG: Pat-UT| 326

CONTRACTOR: Patterson-UTI Drilling Company
UNIQUE WELL ID:
SPUD DATE: Jun 03, 2012 20:57
RELEASE DATE: Jun 15, 2012 07:04

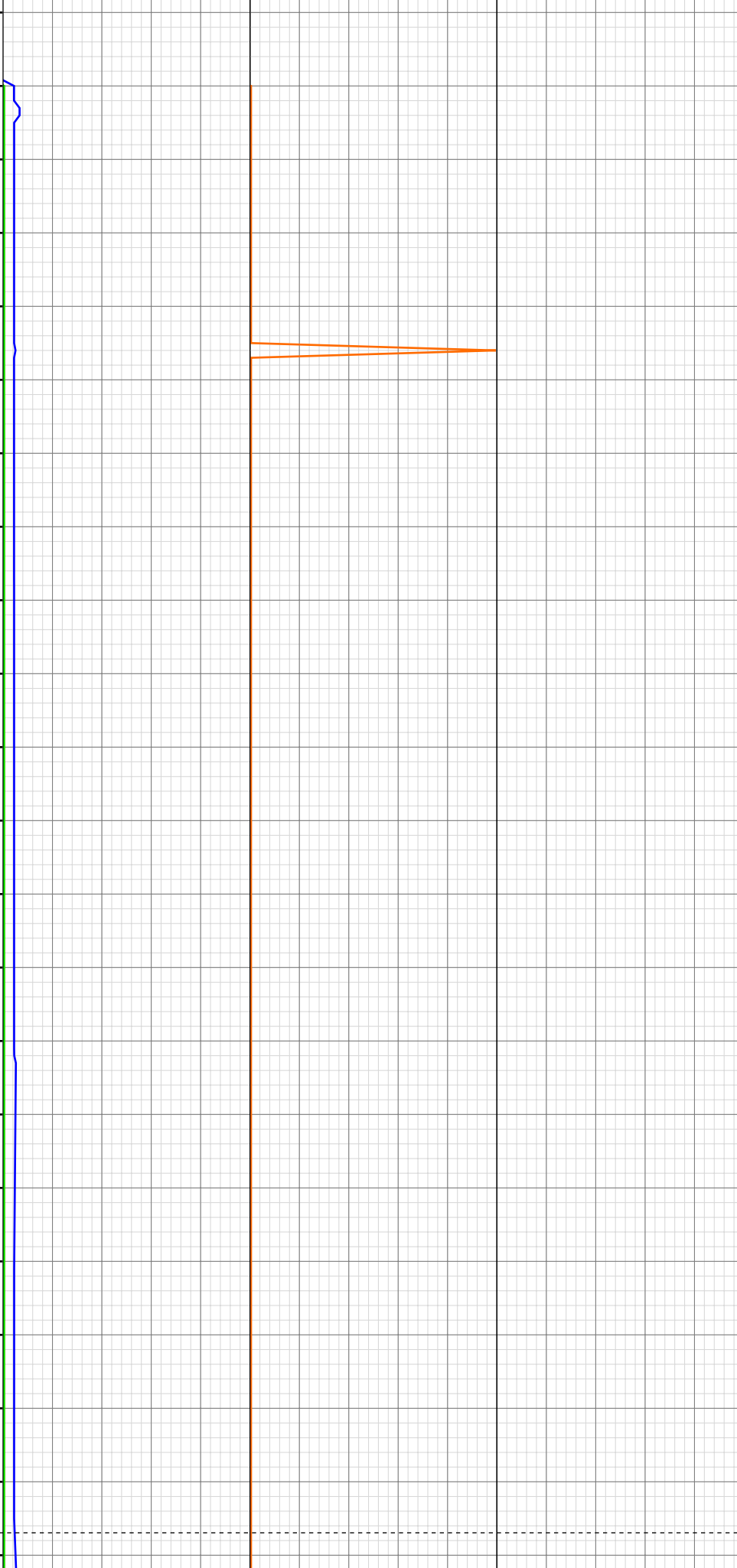


13:55	150
13:55	160
14:00	170
14:00	180
14:00	190
14:03	200
14:03	210
14:03	220
14:07	230
14:07	240
14:07	250
14:10	260
14:10	270
14:10	280
14:14	290
14:15	300
14:15	310
14:18	320
14:18	330
14:18	340
14:18	350
14:22	360

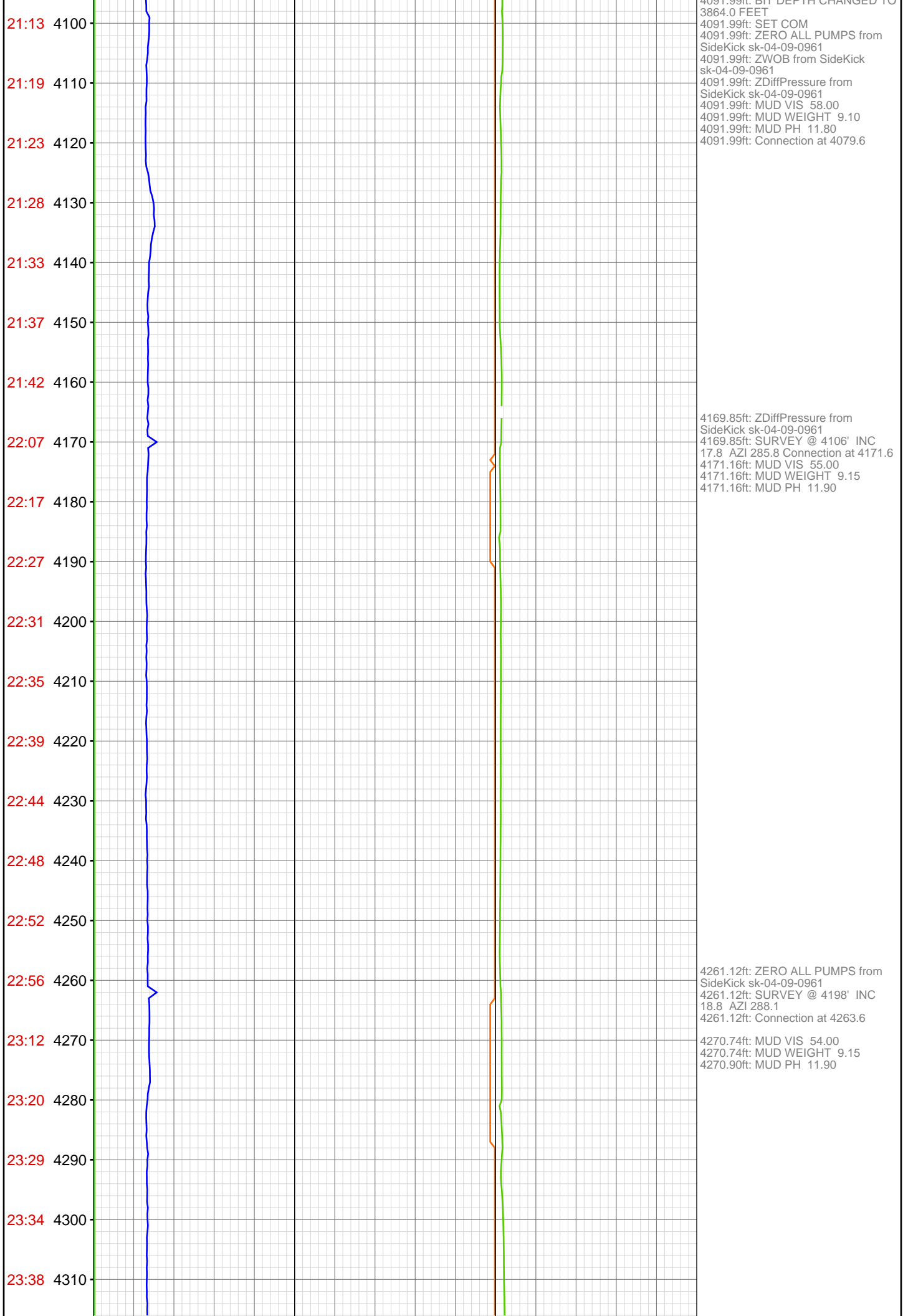


223.34ft: MUD VIS 56.00
223.34ft: MUD WEIGHT 9.10

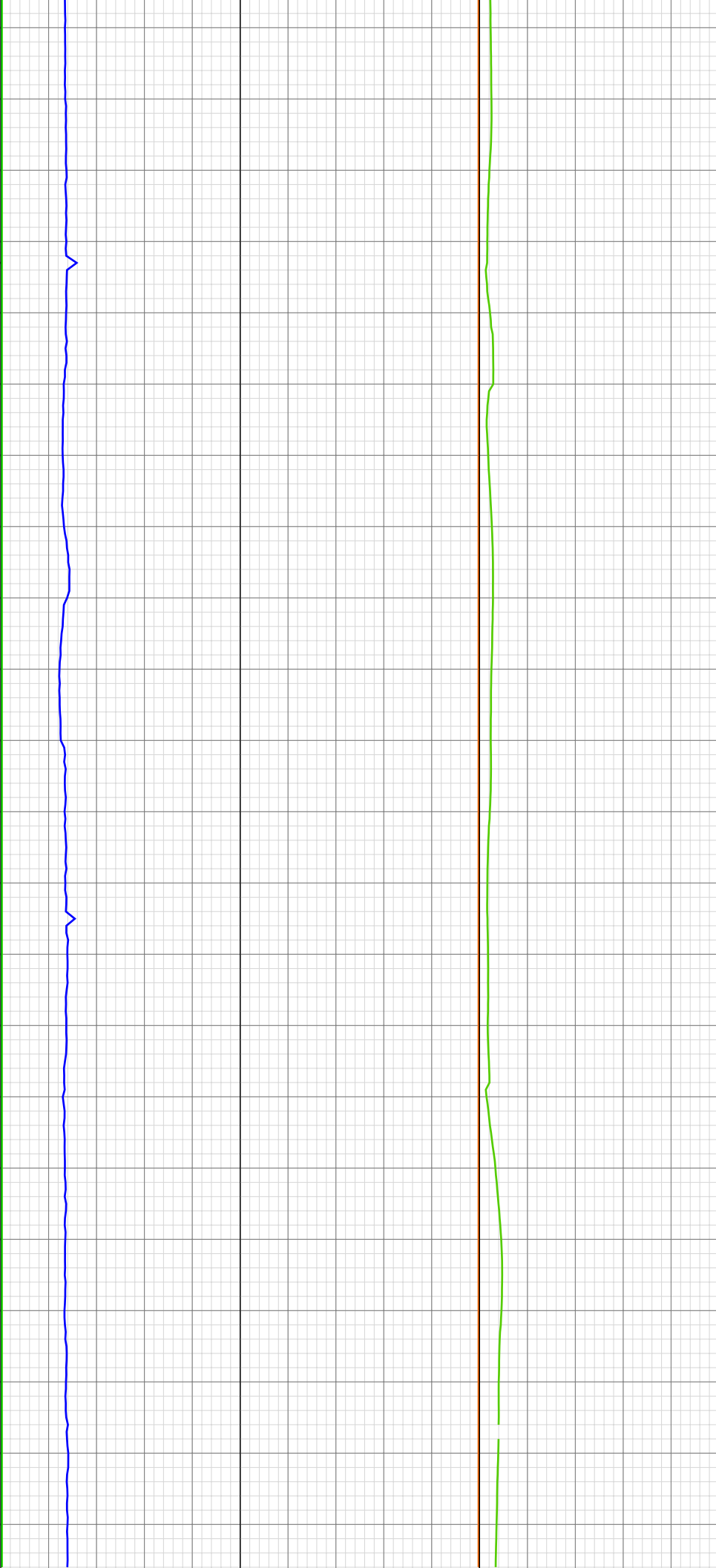
14:22 370
14:22 380
14:26 390
14:26 400
14:26 410
14:34 420
14:34 430
14:34 440
14:45 450
14:45 460
14:45 470
14:45 480
14:49 490
14:49 500
14:49 510
14:53 520
14:53 530
14:53 540
14:58 550
14:58 560
14:58 570
15:01 4090



4091.99ft: HOLE DEPTH CHANGED
TO 4092.0 FEET
4091.99ft: MUD VIS 57.00
4091.99ft: BIT DEPTH CHANGED TO
1483.0 FEET MUD WEIGHT 9.10
4091.99ft: MUD VIS 57.00
4091.99ft: MUD WEIGHT 9.10
4091.99ft: MUD VIS 57.00
4091.99ft: MUD WEIGHT 9.10
4091.99ft: INSTALL ROT HEAD
4091.99ft: MUD-VIS 57.00
4091.99ft: MUD WEIGHT 9.10
4091.99ft: MUD VIS 56.00
4091.99ft: MUD WEIGHT 9.10
4091.99ft: MUD PH 8.10
4091.99ft: BIT DEPTH CHANGED TO



23:42 4320
23:47 4330
23:51 4340
23:54 4350
Jun 08, 2012
00:12 4360
00:19 4370
00:24 4380
00:28 4390
00:31 4400
00:34 4410
00:37 4420
00:42 4430
00:46 4440
00:59 4450
01:08 4460
01:17 4470
01:21 4480
01:25 4490
01:29 4500
01:33 4510
01:38 4520
01:41 4530



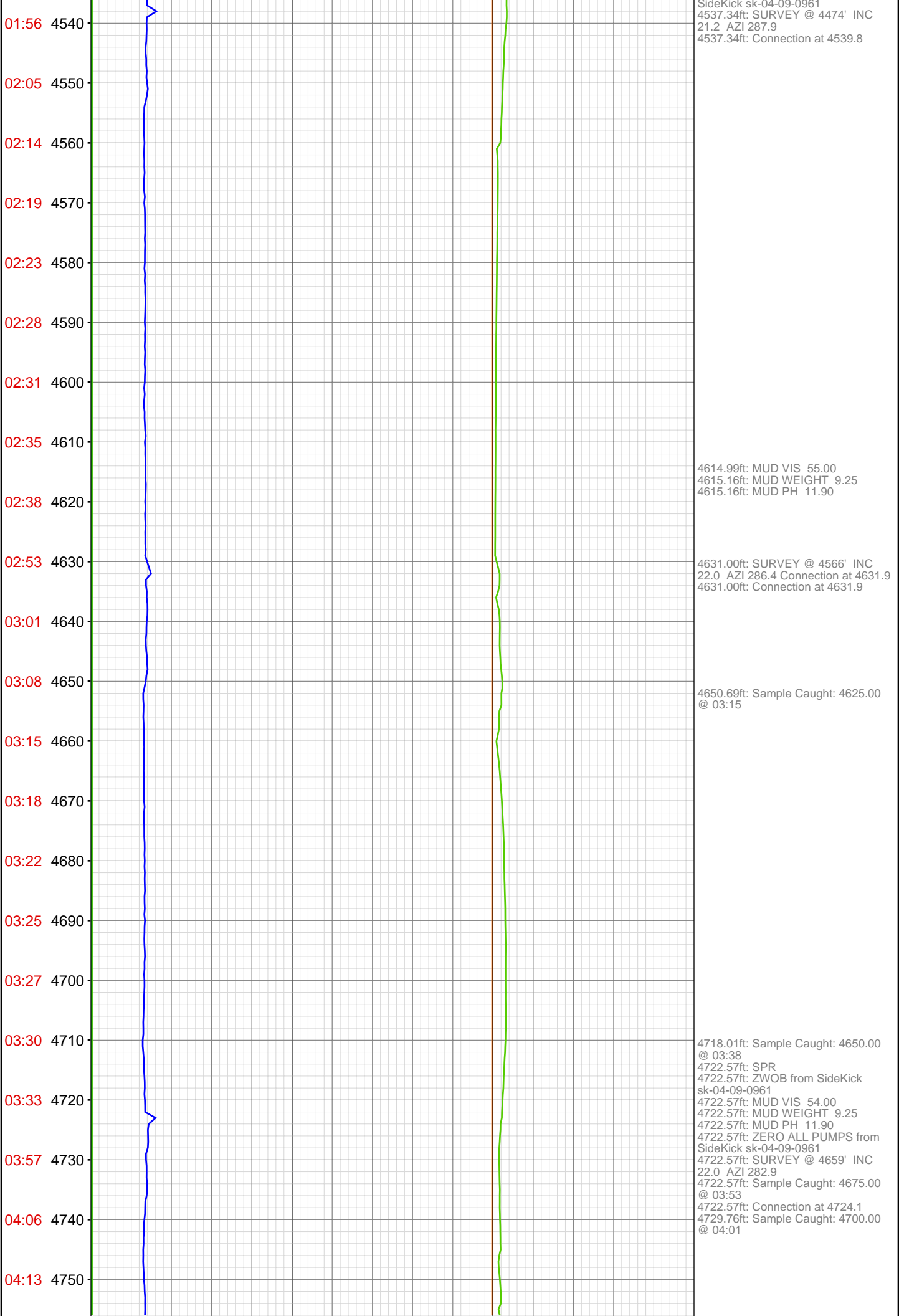
4352.72ft: SURVEY @ 4290' INC
21.0 AZI 289.4
4352.72ft: Connection at 4355.8

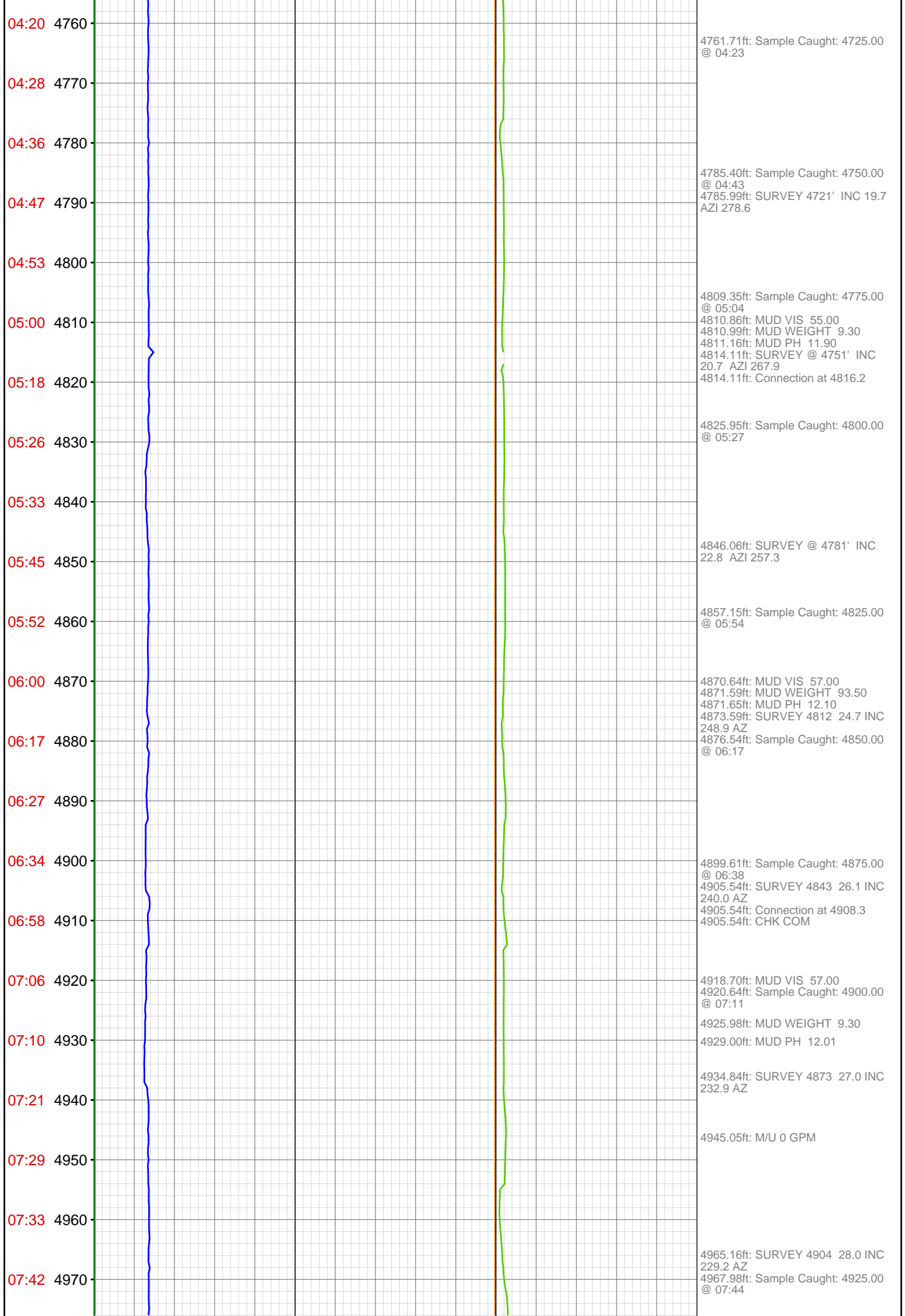
4370.77ft: MUD VIS 53.00
4371.00ft: MUD WEIGHT 9.20
4371.00ft: MUD PH 11.90

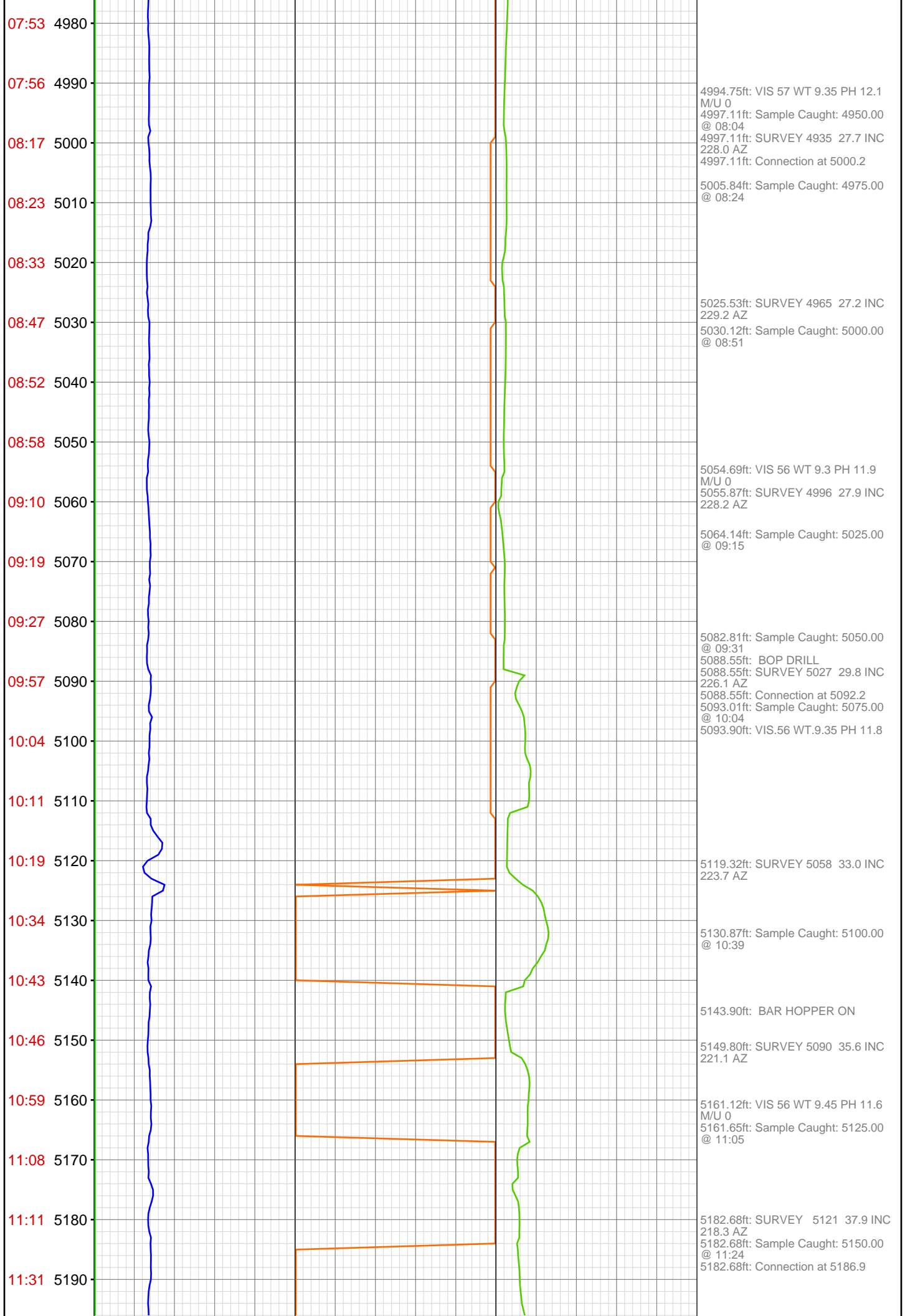
4444.16ft: SURVEY @ 4382' INC
20.9 AZI 289.8
4444.16ft: Connection at 4447.9

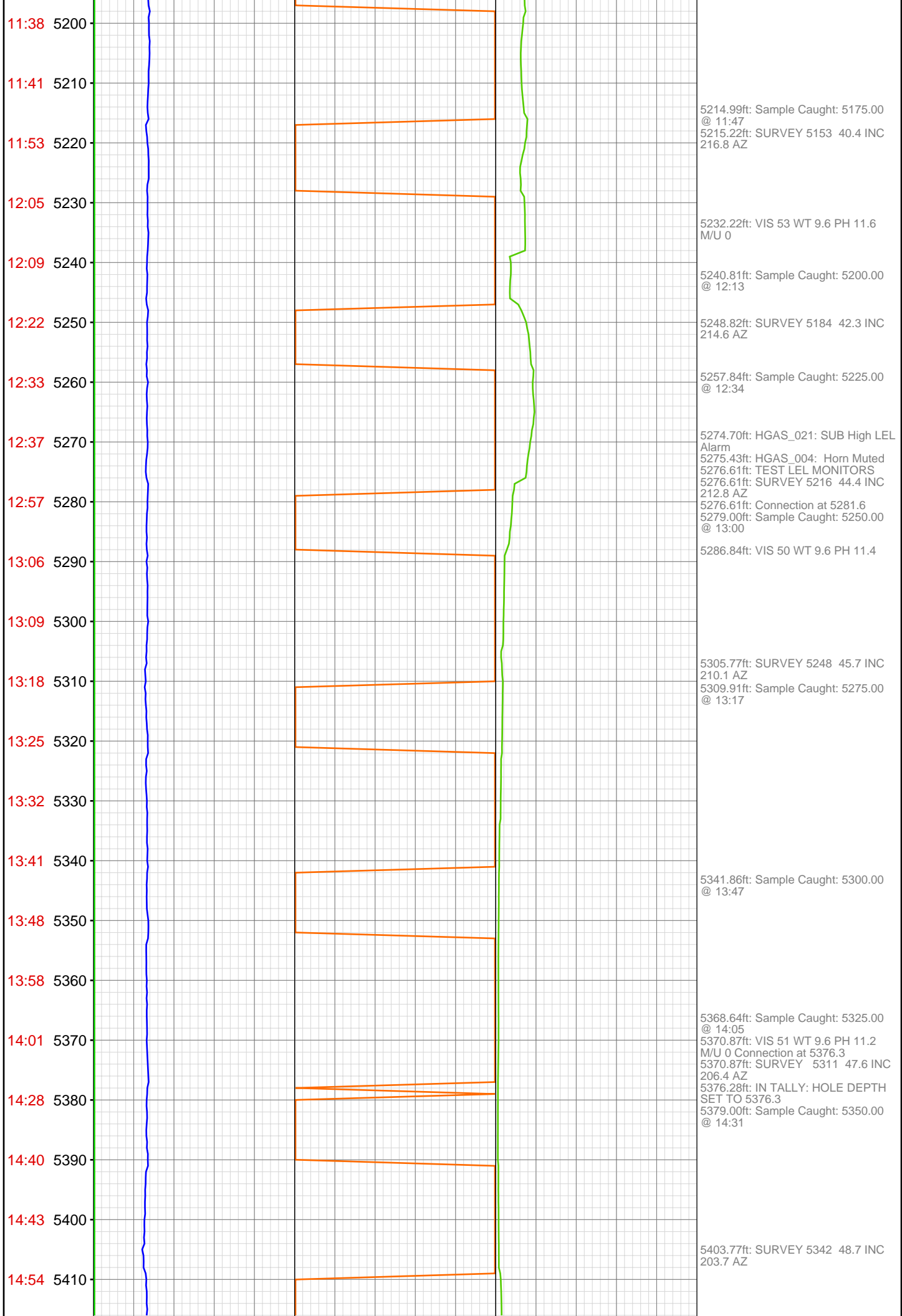
4504.63ft: MUD VIS 56.00
4504.99ft: MUD WEIGHT 9.25
4504.99ft: MUD PH 11.90

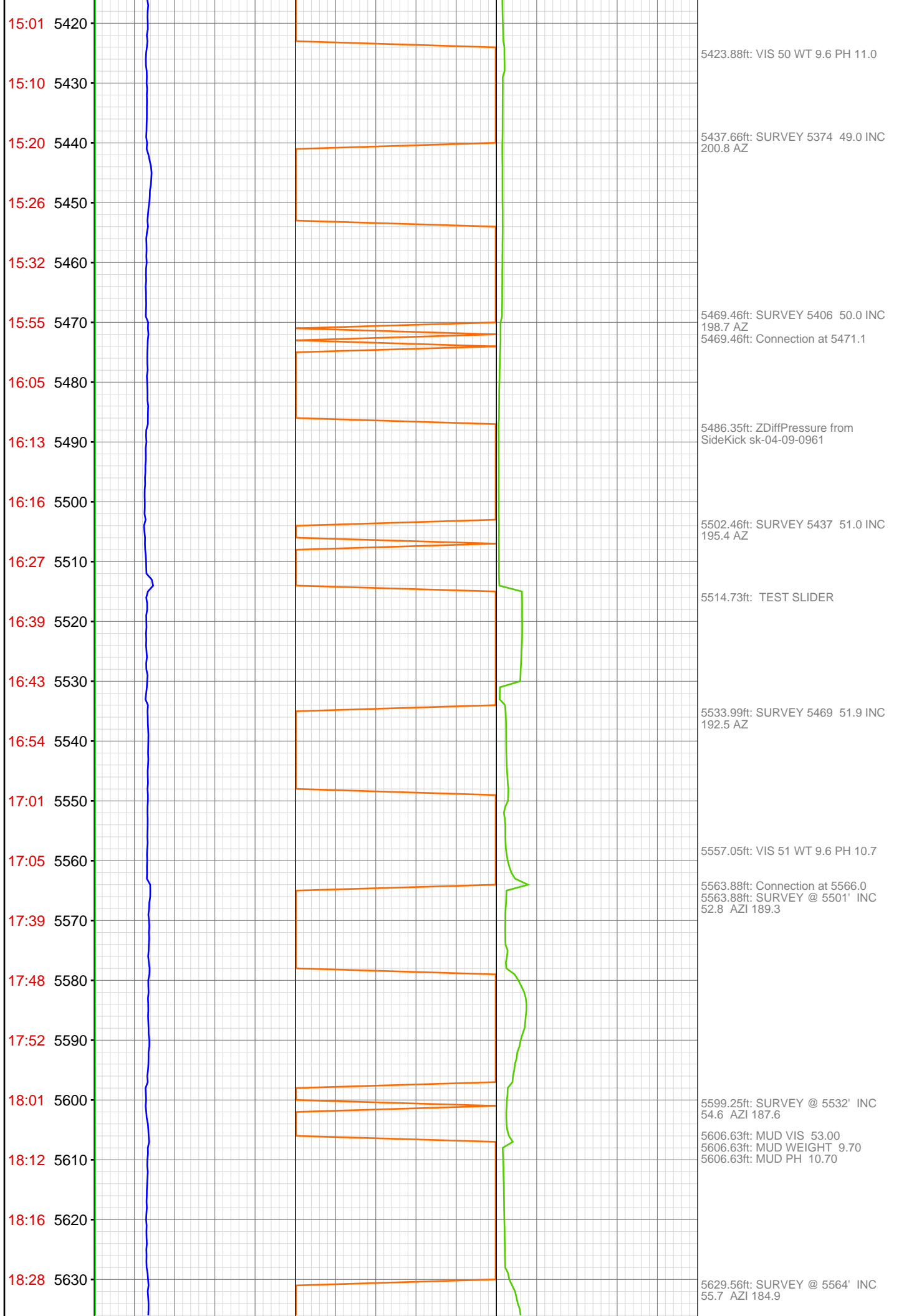
4537.34ft: ZERO ALL PUMPS from

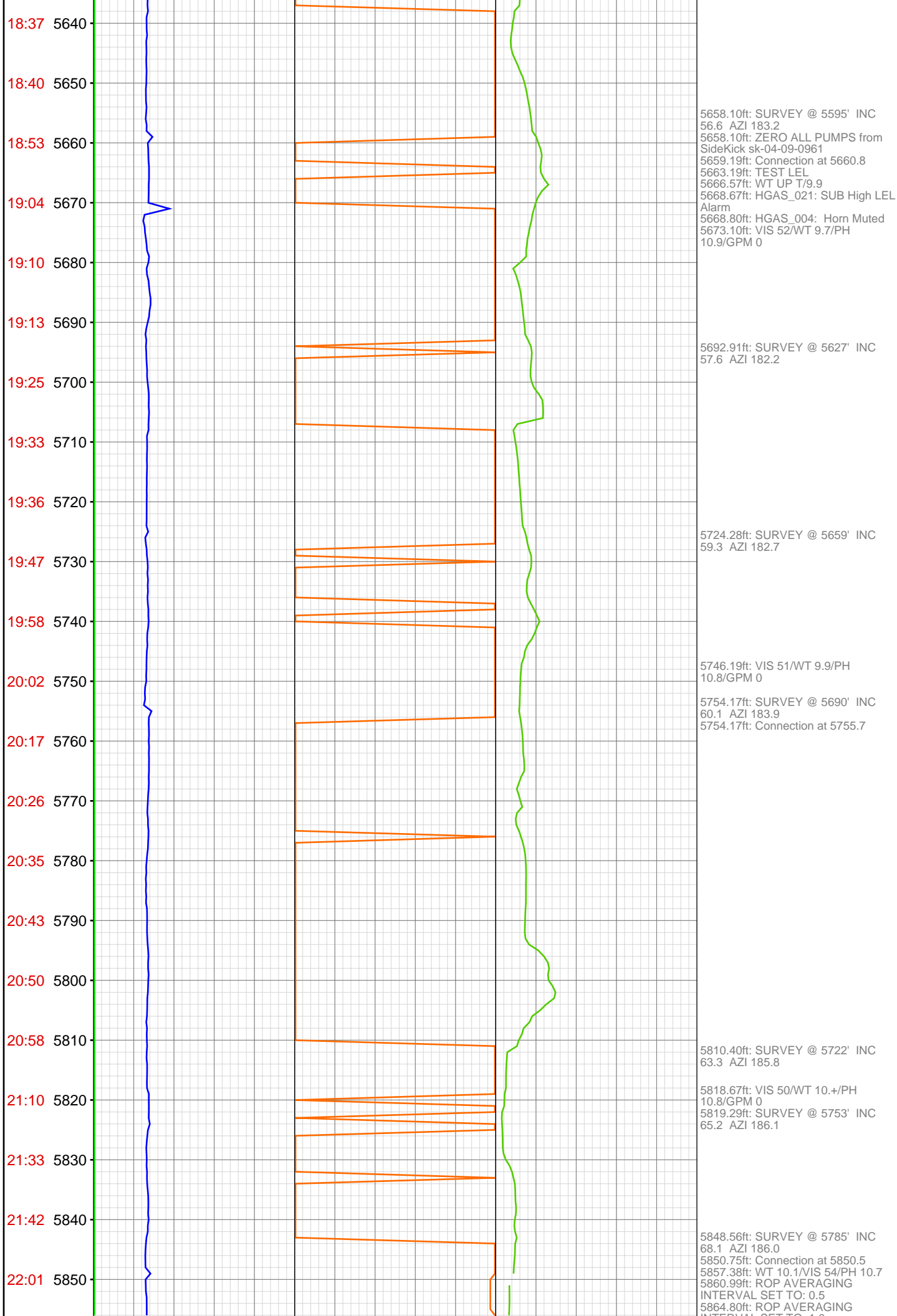


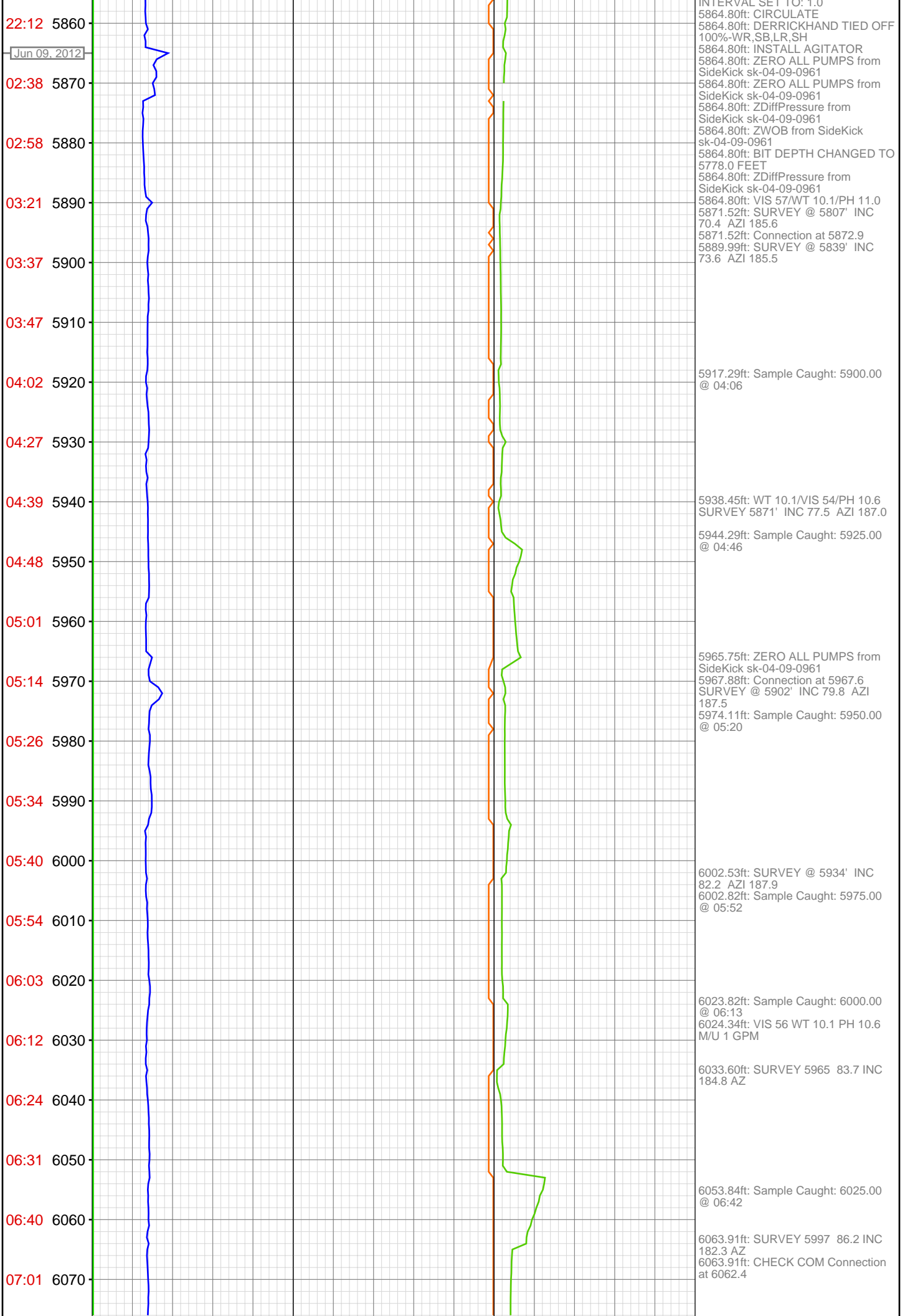


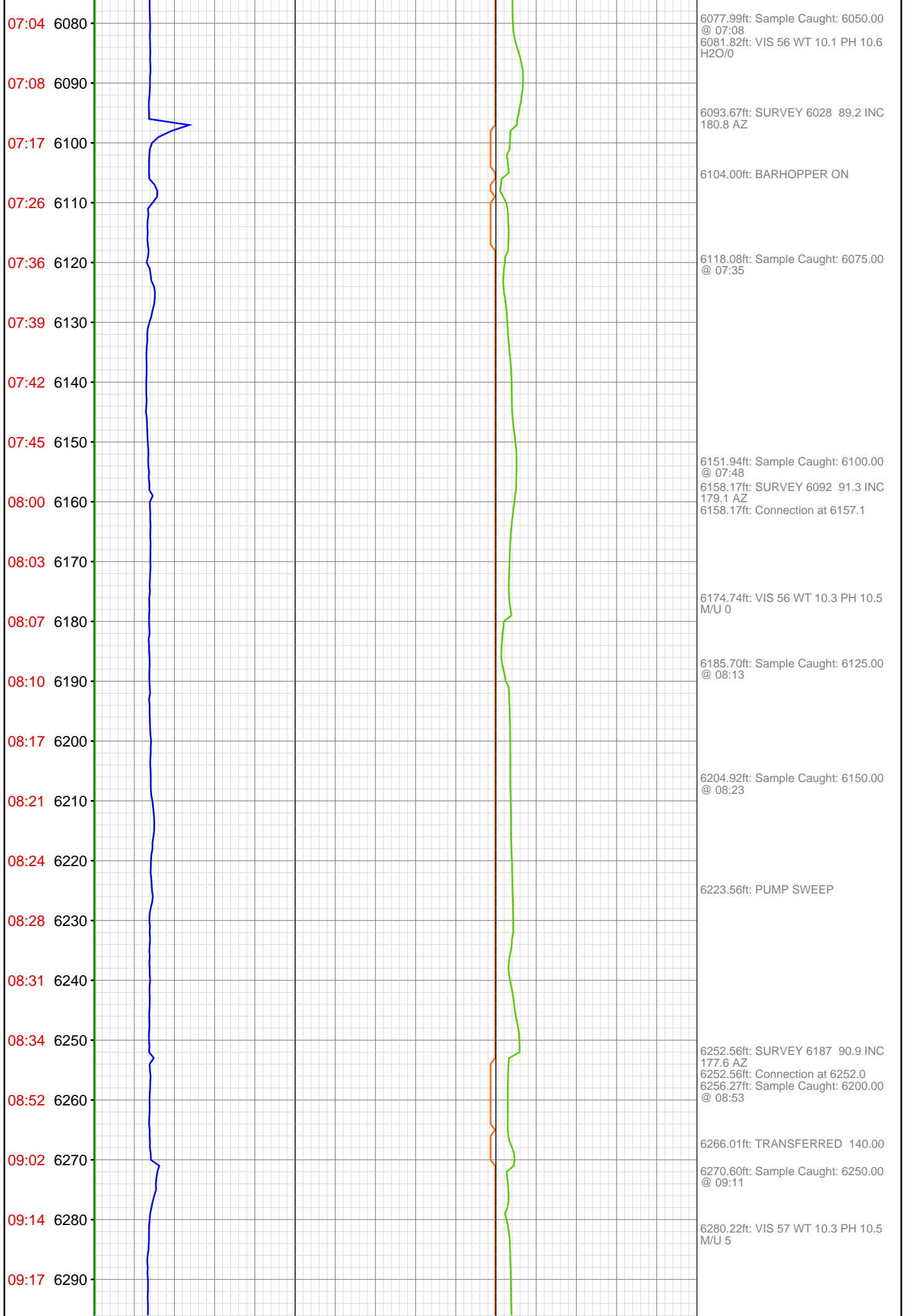


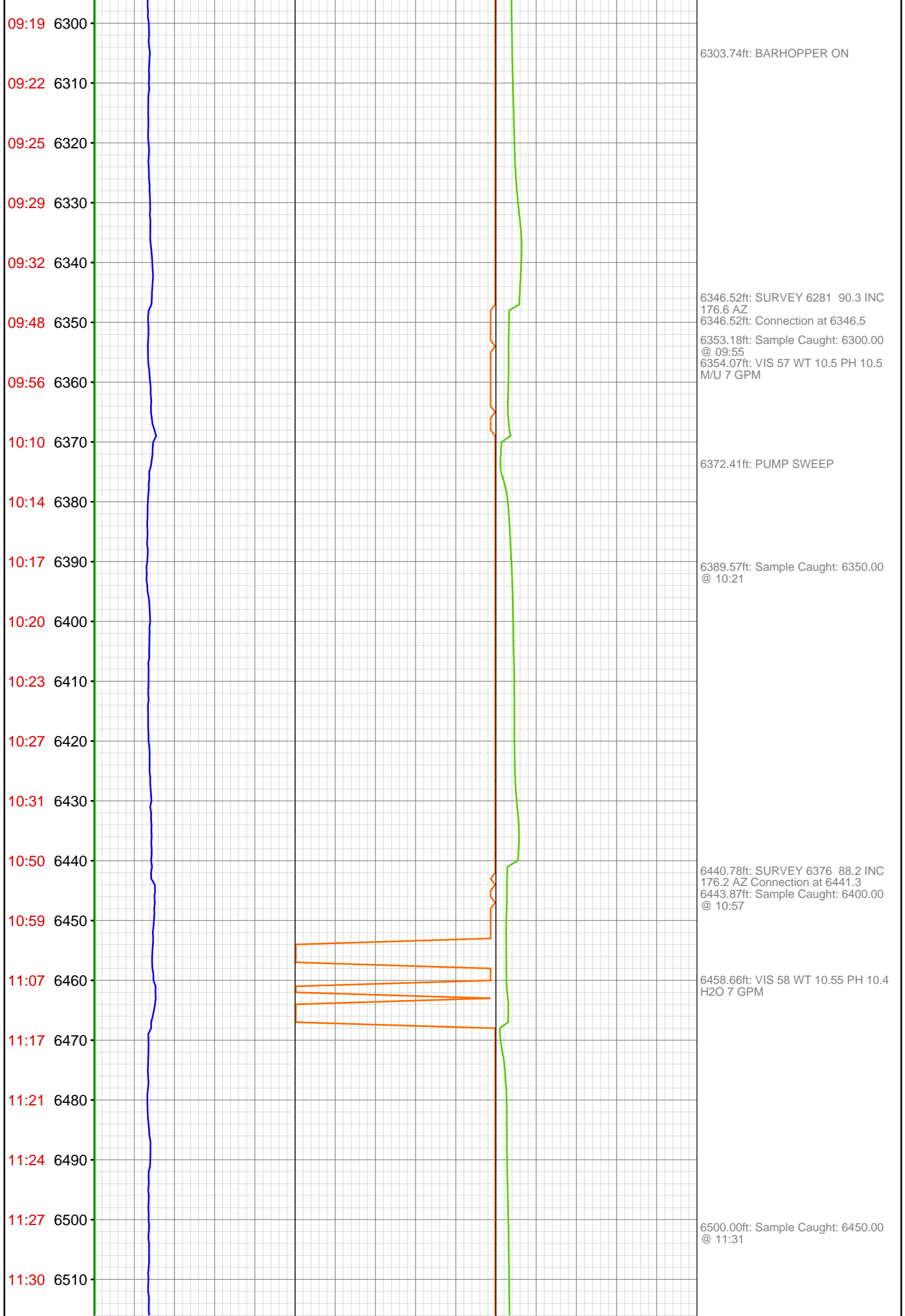




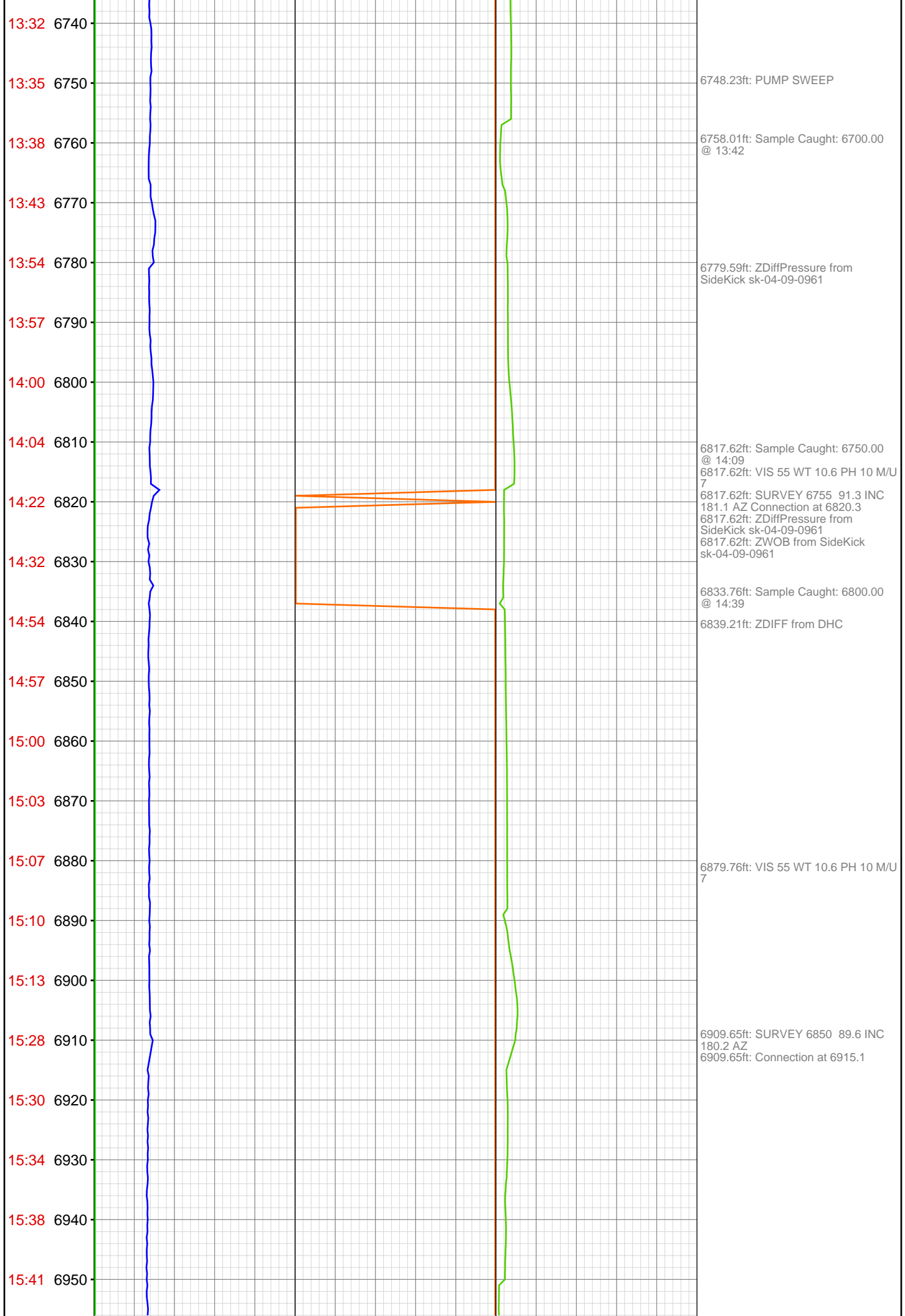


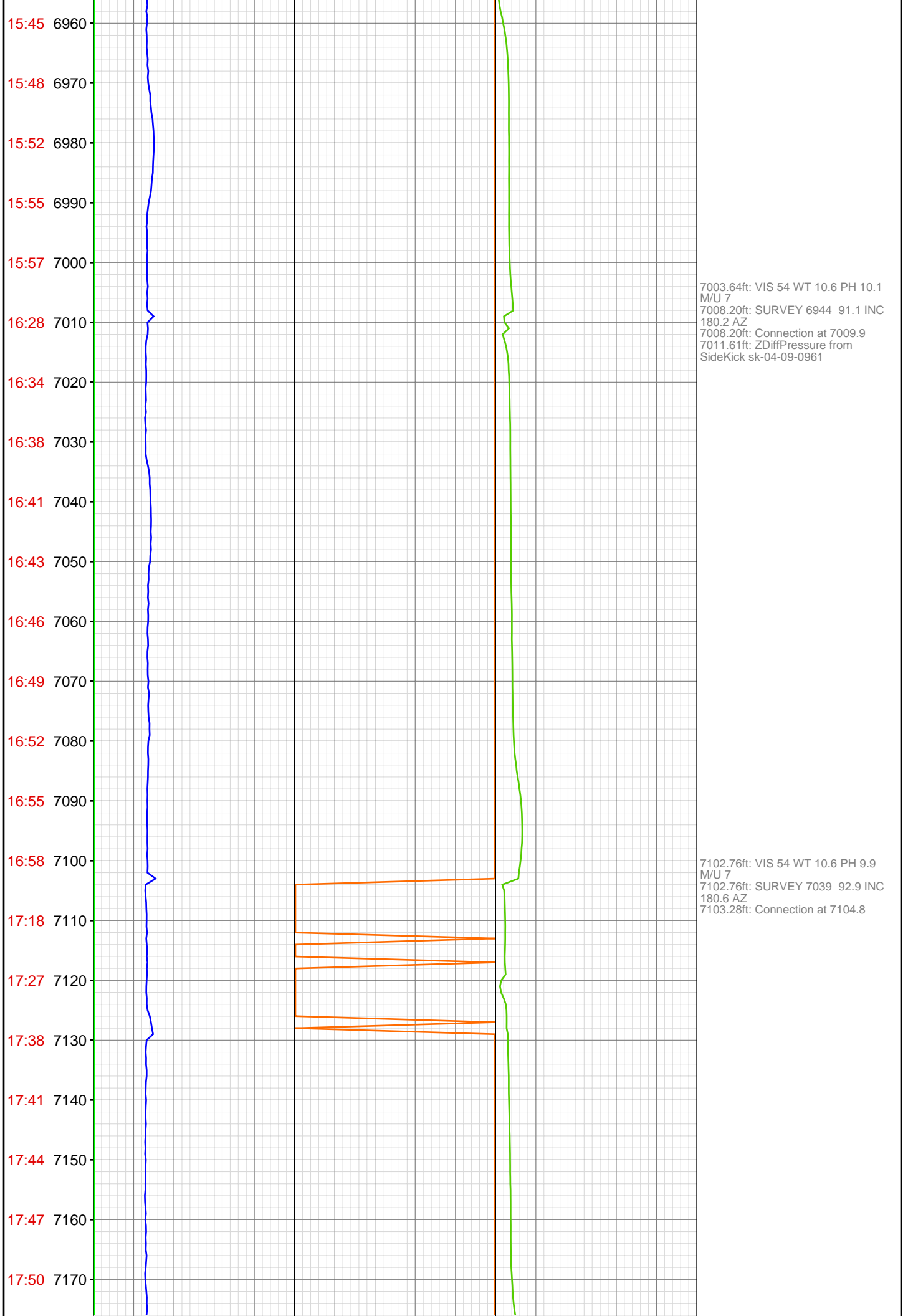












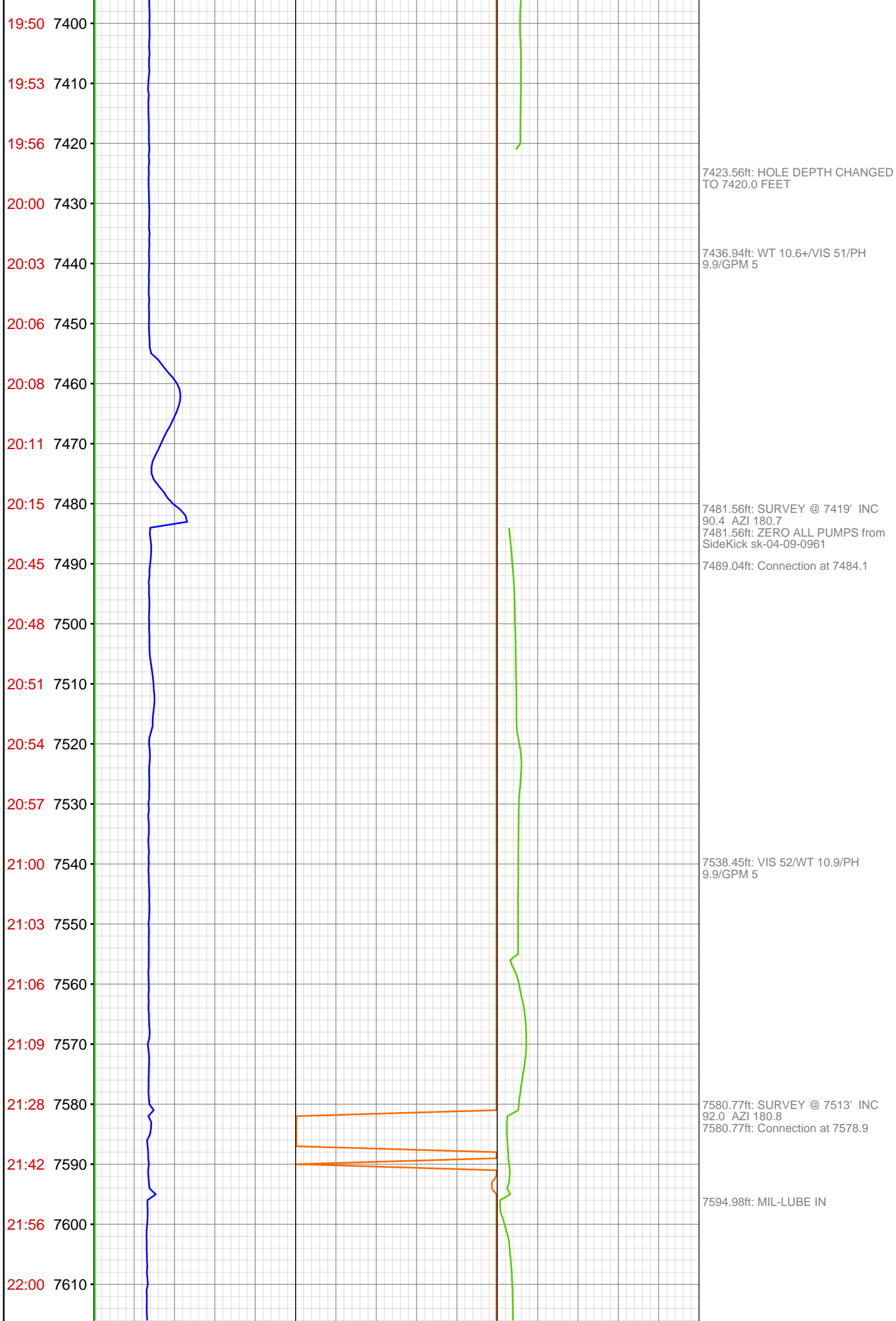
17:53 7180
17:56 7190
18:10 7200
18:13 7210
18:17 7220
18:20 7230
18:23 7240
18:26 7250
18:29 7260
18:32 7270
18:35 7280
18:38 7290
18:53 7300
19:03 7310
19:14 7320
19:17 7330
19:20 7340
19:23 7350
19:26 7360
19:29 7370
19:32 7380
19:48 7390

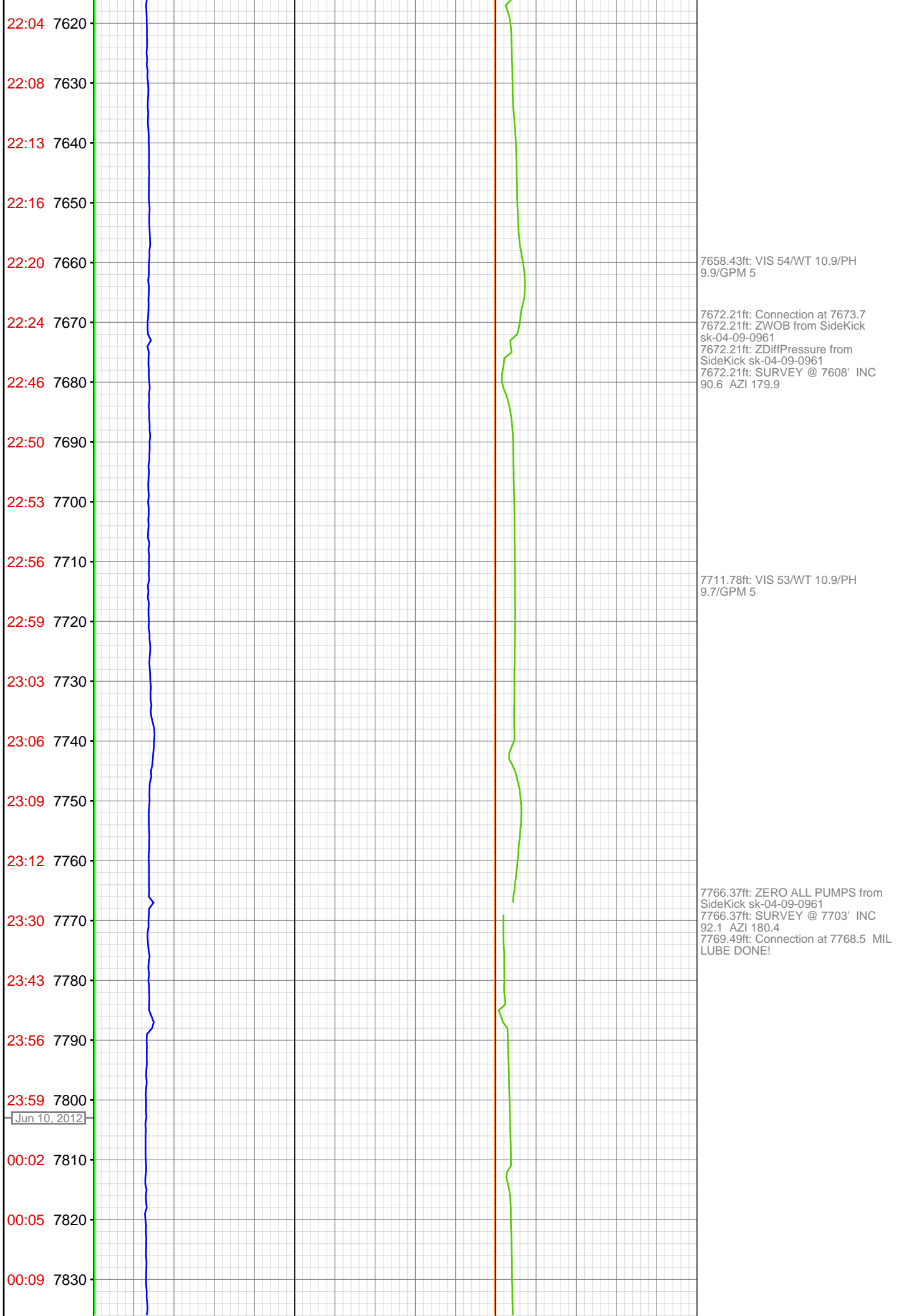
7197.08ft: SURVEY @ 7134' INC
90.0 AZI 179.9
7197.08ft: ZERO ALL PUMPS from
SideKick sk-04-09-0961
7197.08ft: VIS 53/ WT 10.6/ PH 9.9/
GPM 5
7197.08ft: ZDiffPressure from
SideKick sk-04-09-0961
7197.08ft: ZWOB from SideKick
sk-04-09-0961
7200.72ft: Connection at 7199.7

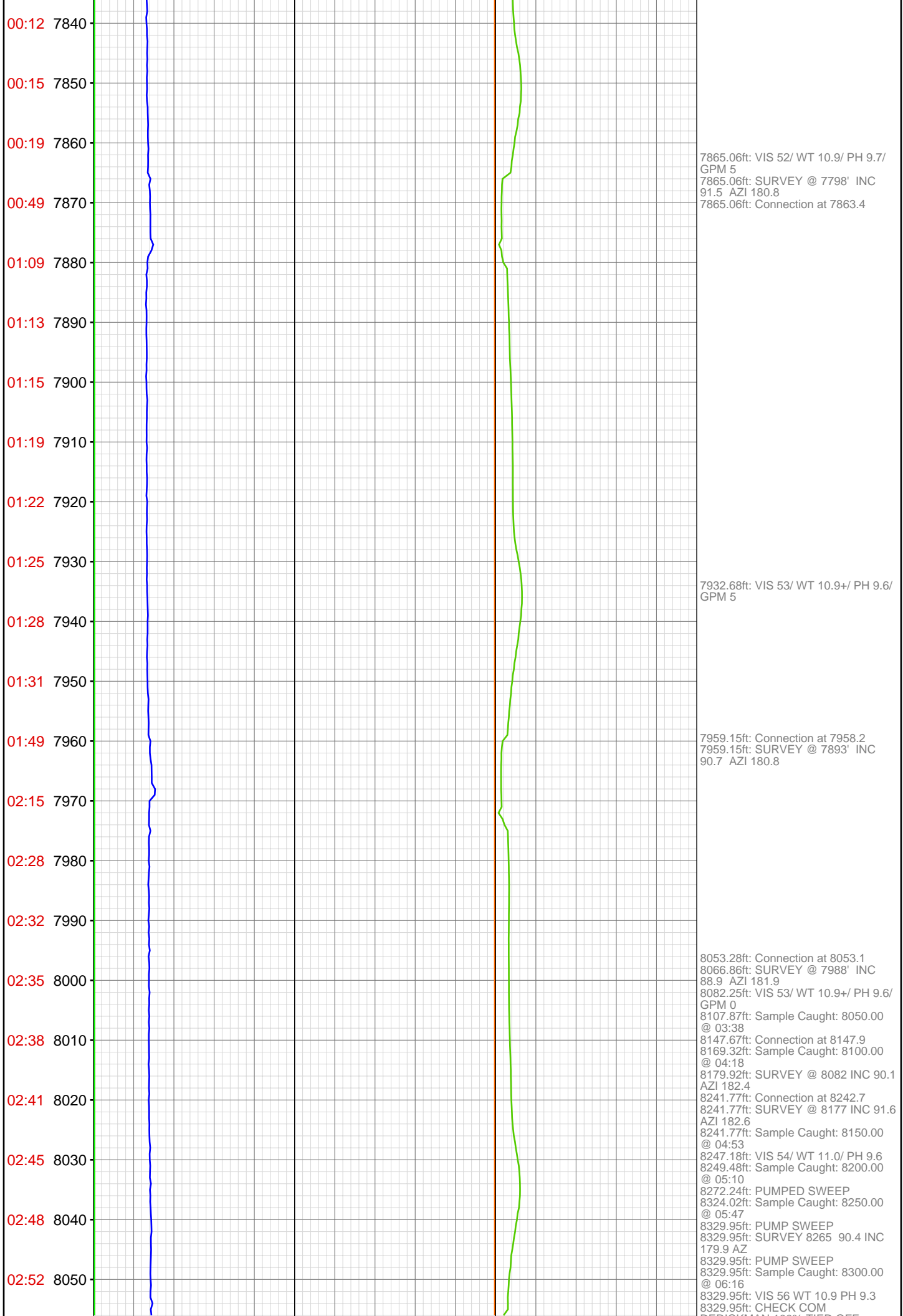
7291.99ft: SURVEY @ 7229' INC
91.4 AZI 180.1
7293.47ft: Connection at 7294.4

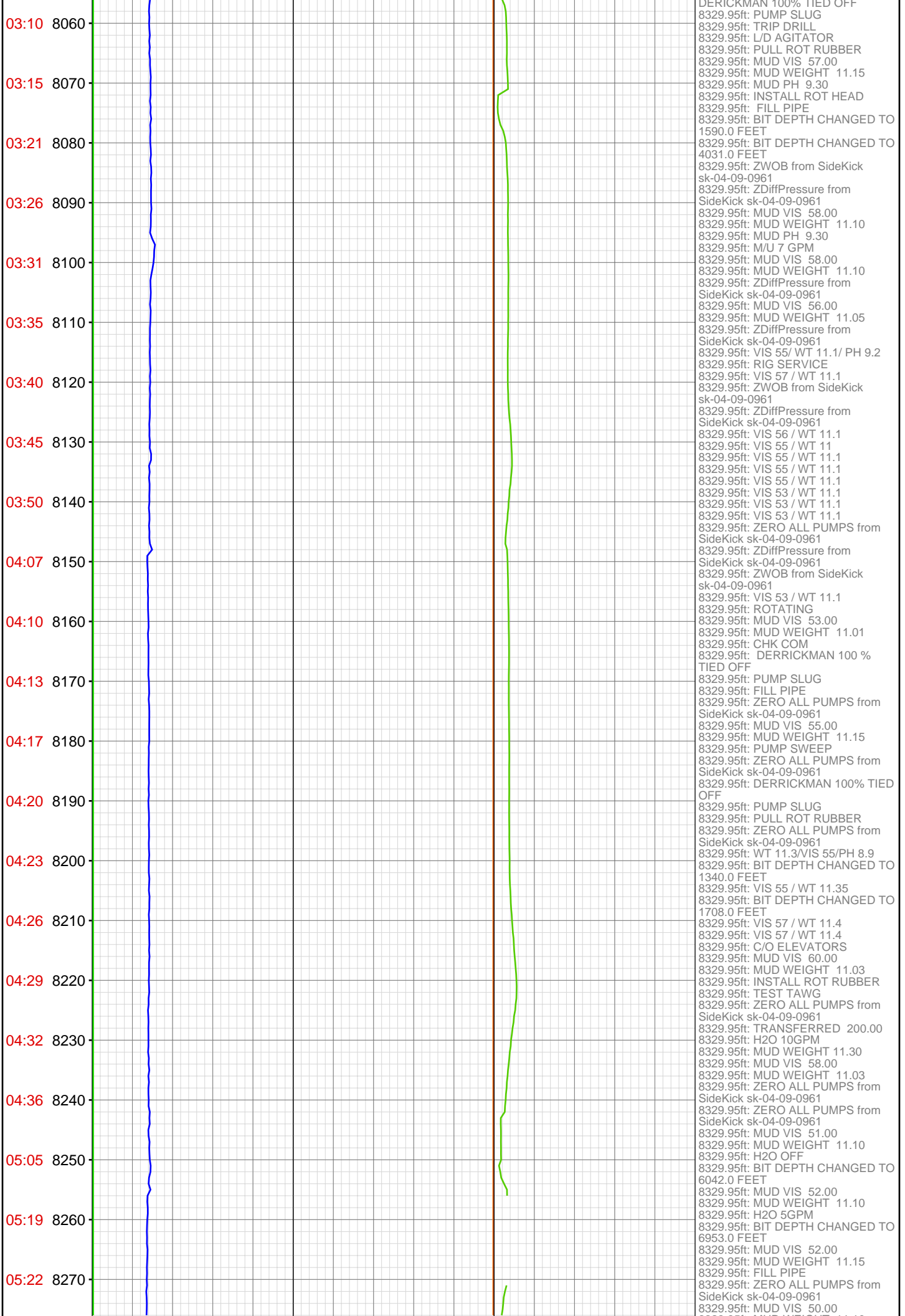
7313.91ft: VIS 51/ WT 10.6+/- PH 9.9/
GPM 5

7389.08ft: SURVEY @ 7324' INC
88.4 AZI 181.4
7390.62ft: Connection at 7389.3









05:26 8280
05:30 8290
05:33 8300
05:37 8310
05:41 8320
8330



8329.95ft: MUD WEIGHT 11.10
8329.95ft: ZERO ALL PUMPS from
SideKick sk-04-09-0961
8329.95ft: MUD VIS 49.00
8329.95ft: MUD WEIGHT 11.10
8329.95ft: H2O OFF
8329.95ft: ZERO ALL PUMPS from
SideKick sk-04-09-0961
8329.95ft: MUD VIS 48.00
8329.95ft: MUD WEIGHT 11.10
8329.95ft: TRANSFERRED 200.00
8329.95ft: TRANSFERRED 200.00
8329.95ft: ZERO ALL PUMPS from
SideKick sk-04-09-0961
8329.95ft: MUD VIS 48.00
8329.95ft: MUD WEIGHT 11.10
8329.95ft: ZERO ALL PUMPS from
SideKick sk-04-09-0961
8329.95ft: VIS 47/ WT 11.1
8329.95ft: ZERO ALL PUMPS from
SideKick sk-04-09-0961
8329.95ft: BIT DEPTH CHANGED TO
8313.0 FEET
8329.95ft: ZERO ALL PUMPS from
SideKick sk-04-09-0961
8329.95ft: TEST PACKERS
8329.95ft: DROP PLUG
8329.95ft: MUD VIS 47.00
8329.95ft: MUD WEIGHT 10.90
8329.95ft: MUD PH 8.40
8329.95ft: TRANSFERRED 250.00
8329.95ft: PVT:Volume alarm muted
8329.95ft: TRANSFERRED 400.00