



DLD

CASING INSPECTION LOG

PIPE RECOVERY SERVICES

Company		KOCH EXPLORATION		Company		KOCH EXPLORATION	
Well		FEDERAL A-32-2-96-N		Well		FEDERAL A-32-2-96-N	
Field		WHITE RIVER DOME		Field		WHITE RIVER DOME	
County		RIO BLANCO		County		RIO BLANCO	
State		COLORADO		State		COLORADO	
Location:		API # : 05-103-09472		Other Services			
		923' FNL & 860' FEL NE/NE					
Permanent Datum		SEC 32 TWP 2N RGE 96W		Elevation			
Log Measured From		Ground Level		Elevation		5929'	
Drilling Measured From		Kelly Bushing		Elevation		K.B. 5940' D.F. 5939' G.L. 5929'	
Date		Nov. 23, 2011					
Run Number		One					
Depth Driller		6934'					
Depth Logger		4910'					
Bottom Logged Interval		4910'					
Top Log Interval		0'					
Open Hole Size							
Type Fluid		Water					
Density / Viscosity							
Max. Recorded Temp.							
Estimated Cement Top							
Time Well Ready		0700					
Time Logger on Bottom		0730					
Equipment Number		Unit #1					
Location		Grand Junction					
Recorded By		Dale Daniels					
Witnessed By		John Clark					
Borehole Record				Tubing Record			
Run Number		Bit		From		To	
Casing Record		Size		Wgt/Ft		Top	
Surface String		13.375		48#		0'	
Prot. String		9.625"		36#		0'	
Production String		5.5"		17#		0'	
Liner						Bottom	
						314'	
						1515'	
						6934'	

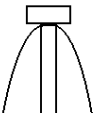
<<< Fold Here >>>

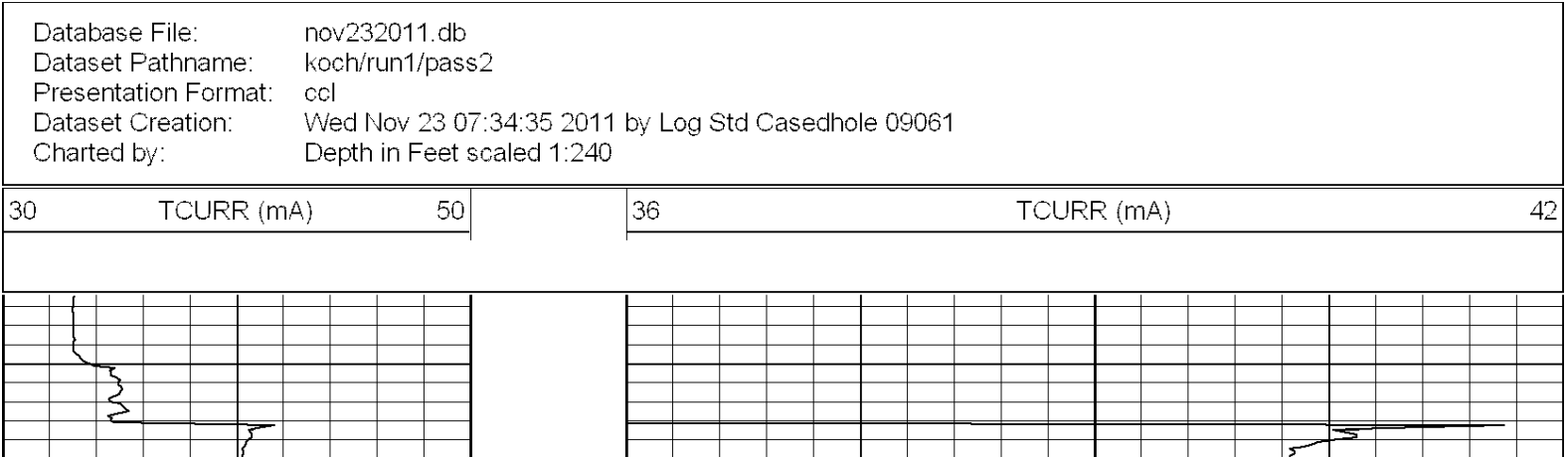
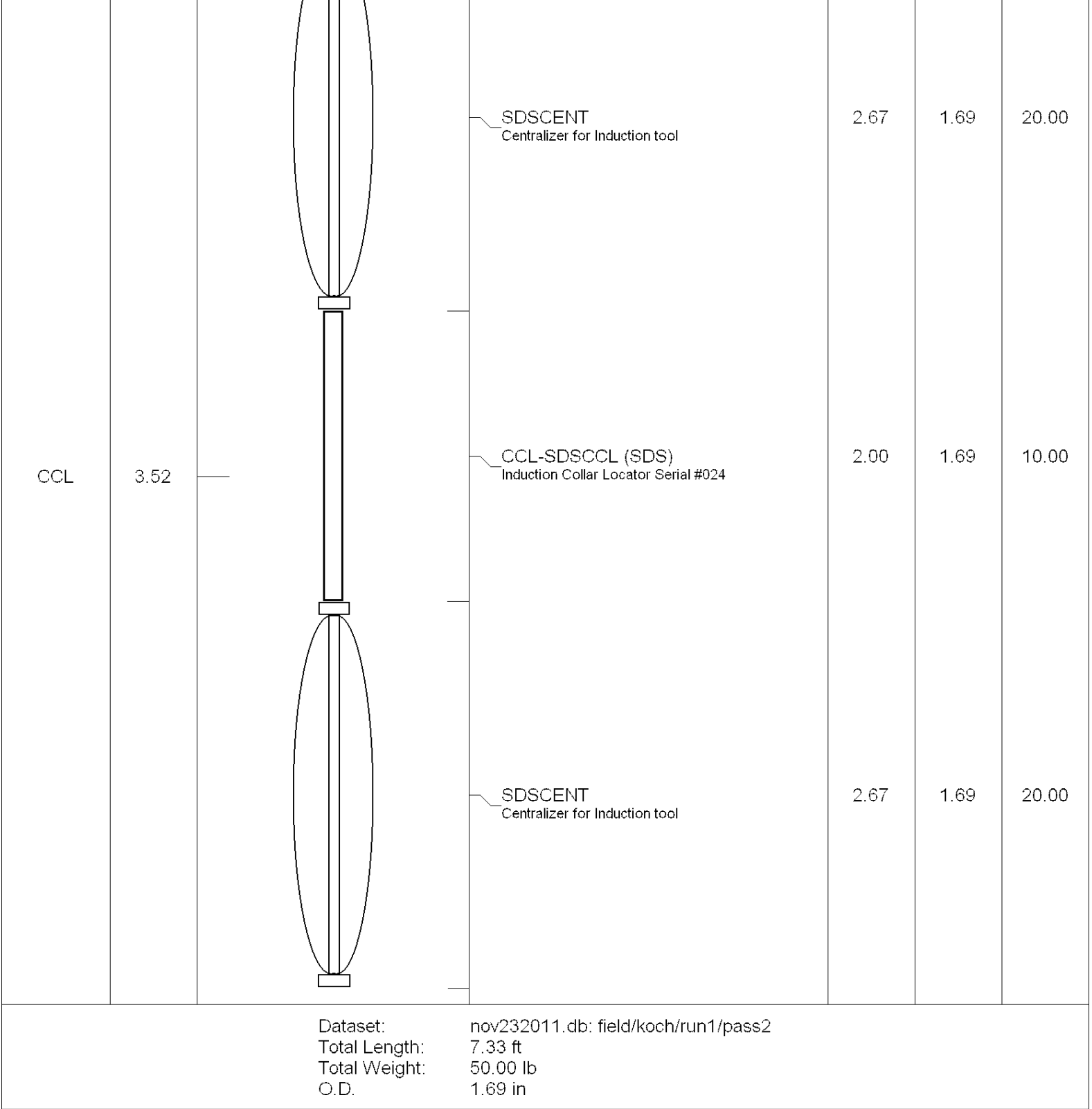
All interpretations are opinions based on inferences from electrical or other measurements and we cannot and do not guarantee the accuracy or correctness of any interpretation, and we shall not, except in the case of gross or willful negligence on our part, be liable or responsible for any loss, costs, damages, or expenses incurred or sustained by anyone resulting from any interpretation made by any of our officers, agents or employees. These interpretations are also subject to our general terms and conditions set out in our current Price Schedule.

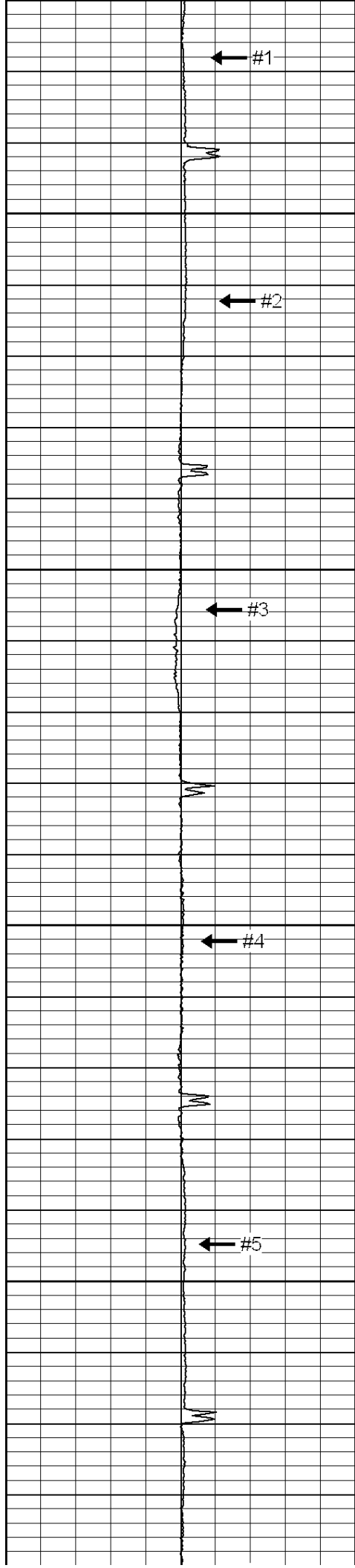
Comments

WESTERN WELLSITE RIG

CREW:
ADAM DANIELS
FORREST DANIELS

Sensor	Offset (ft)	Schematic	Description	Len (ft)	OD (in)	Wt (lb)
						



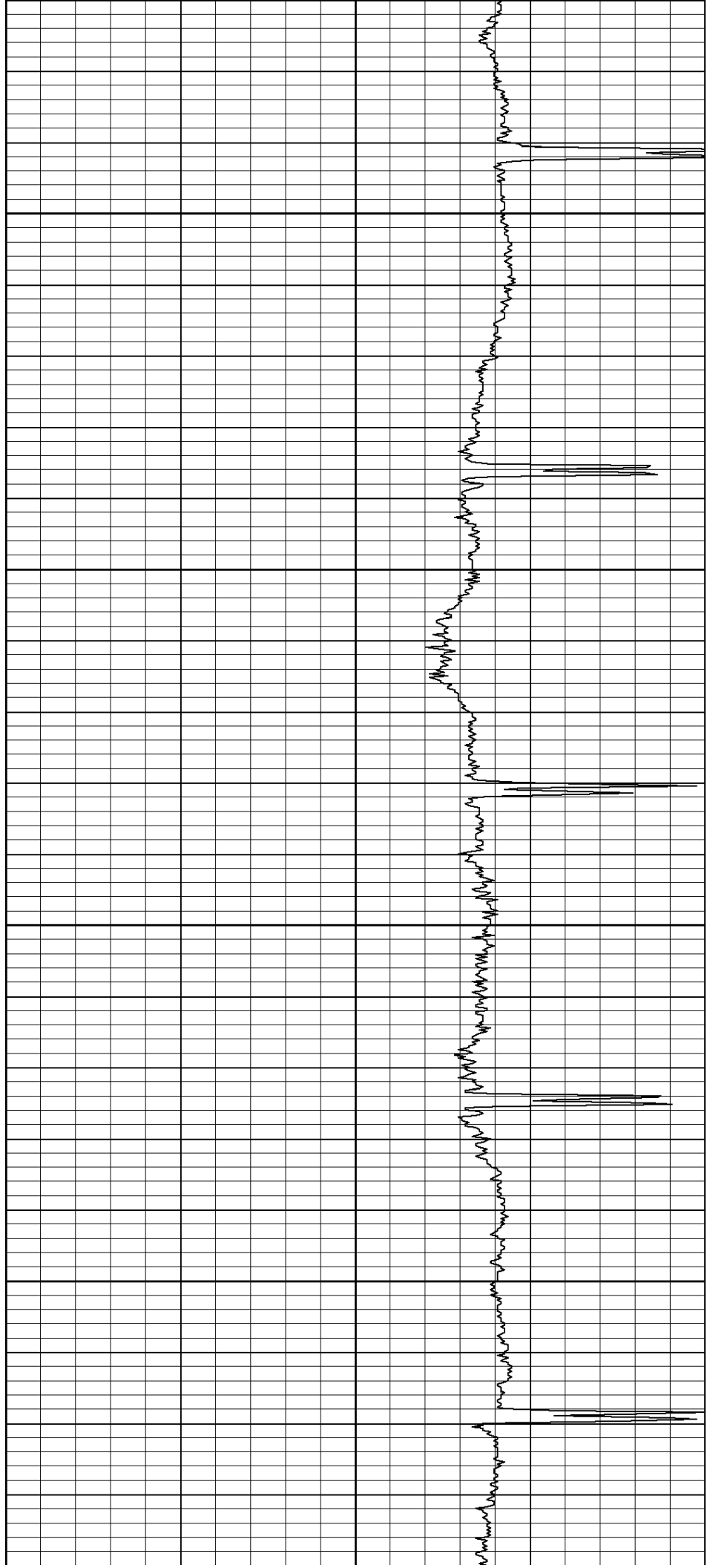


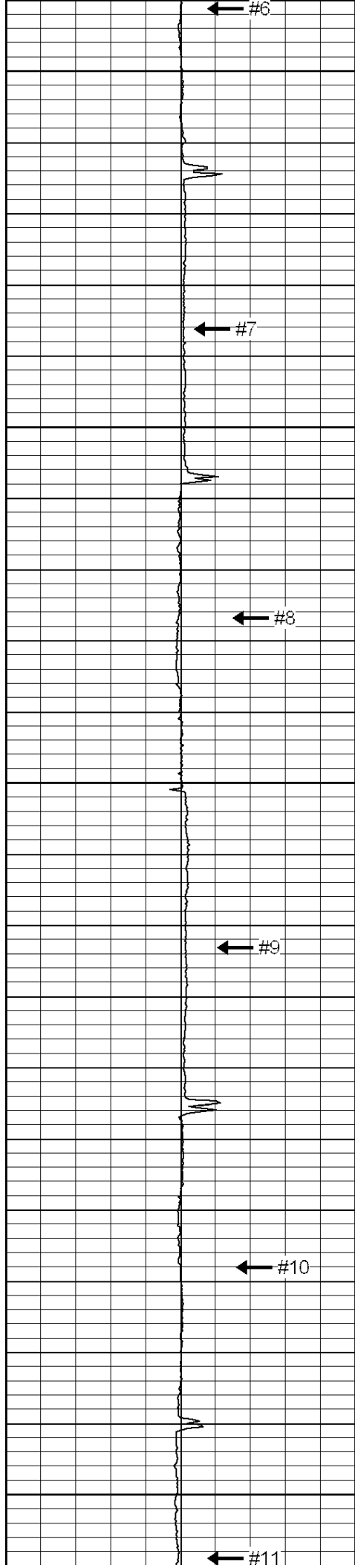
50

100

150

200





250

300

350

400

450

#6

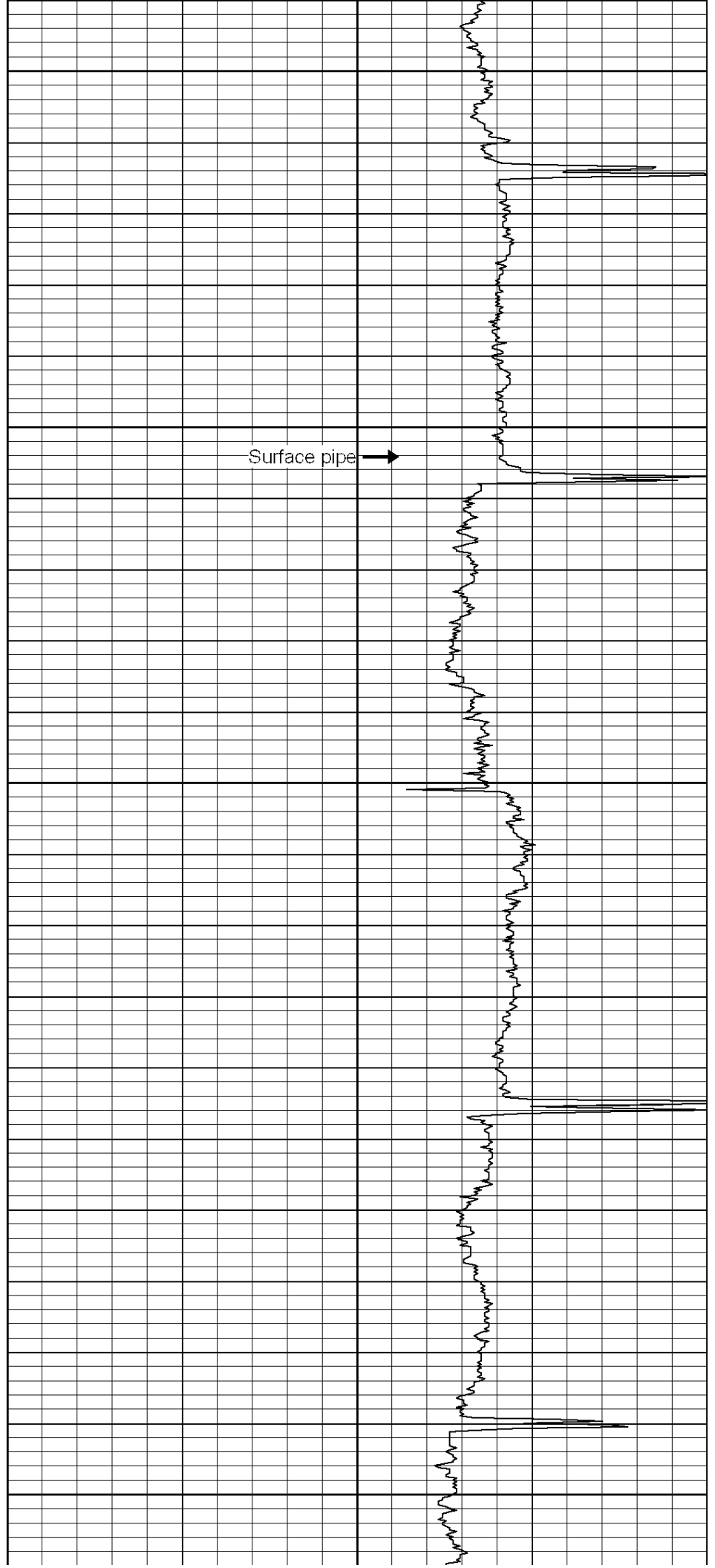
#7

#8

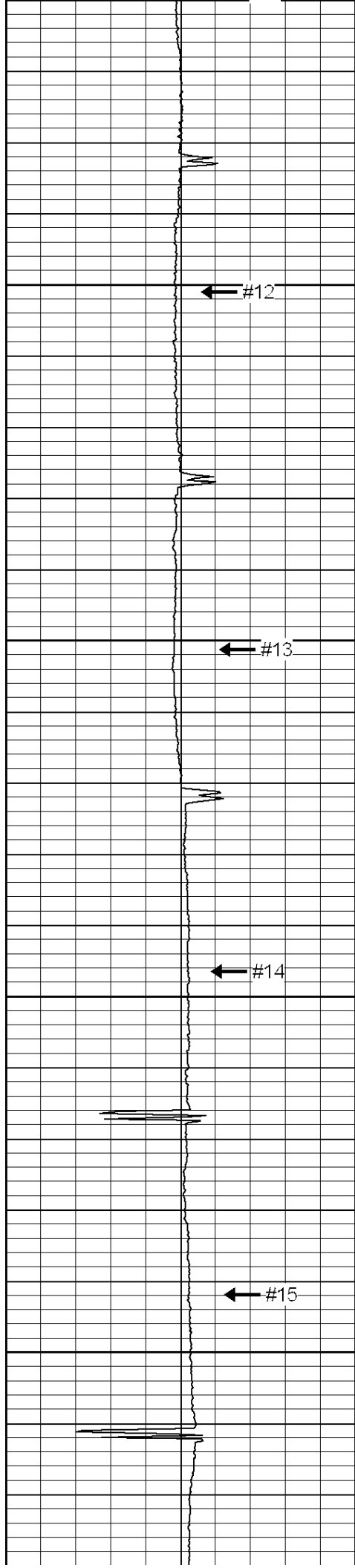
#9

#10

#11



Surface pipe

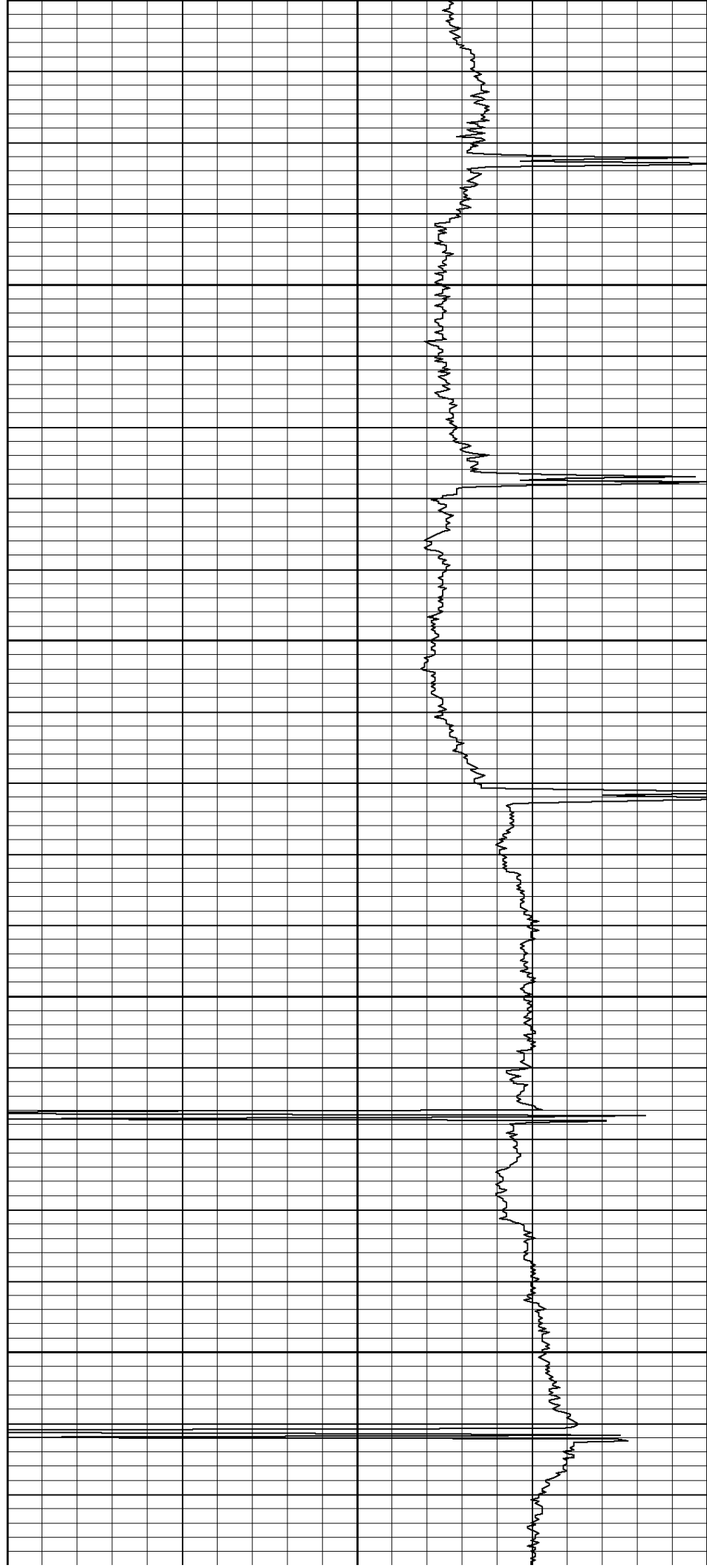


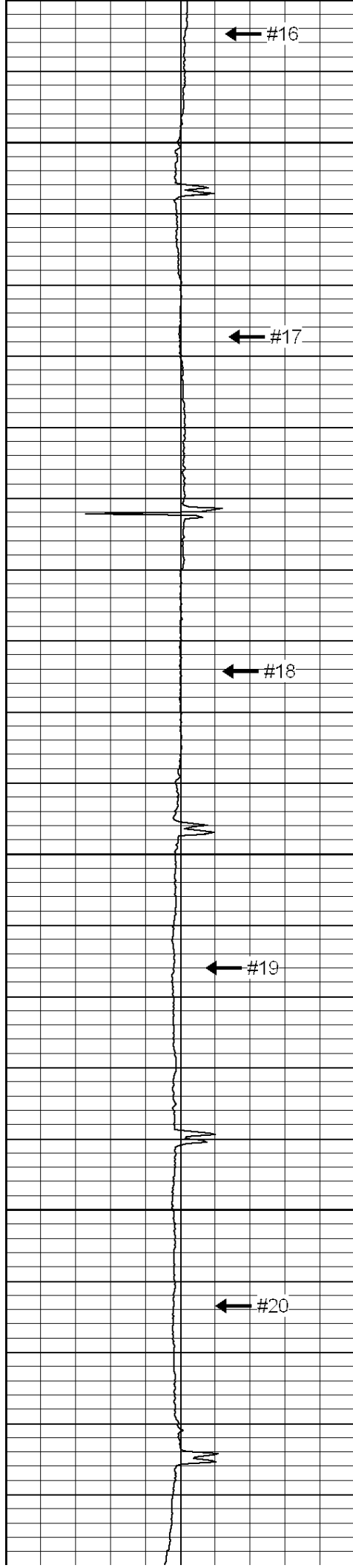
500

550

600

650





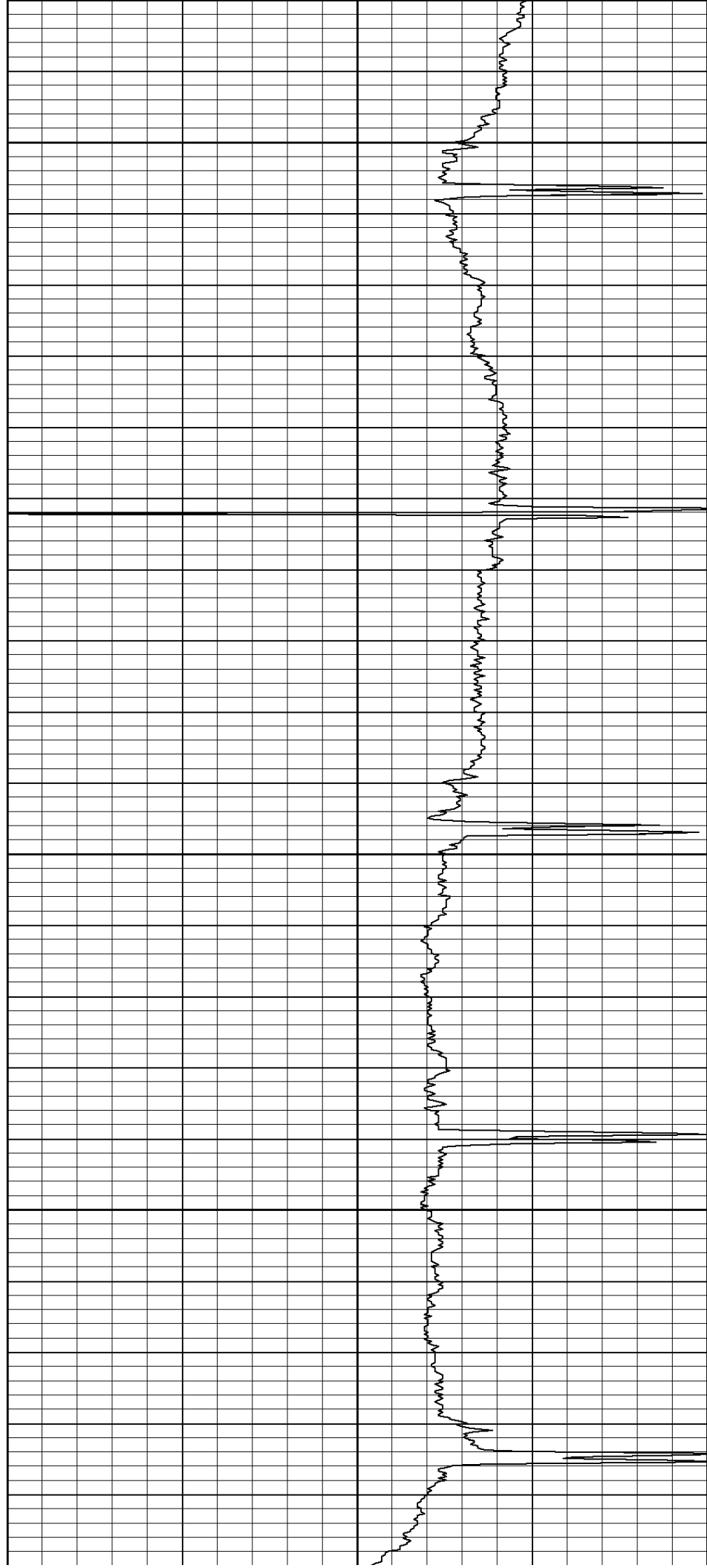
700

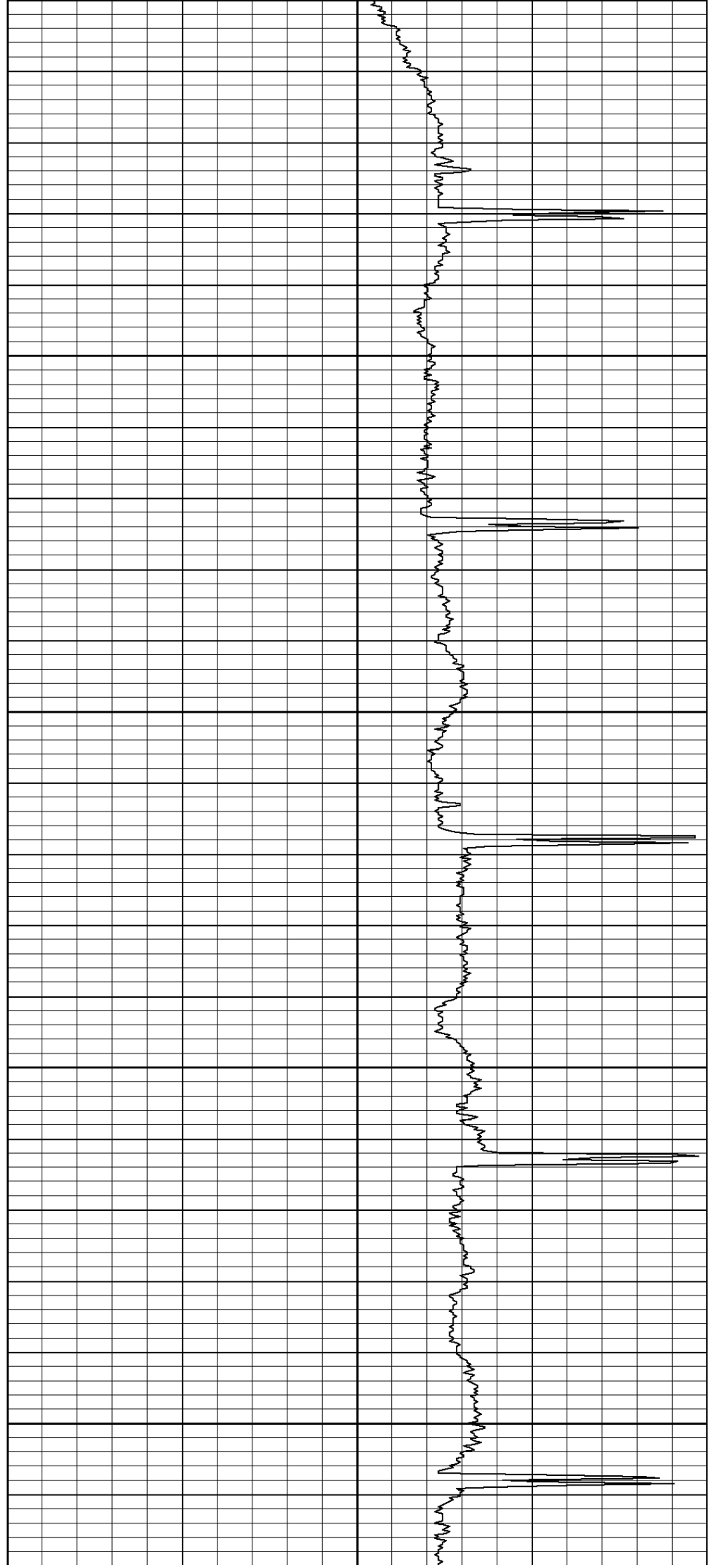
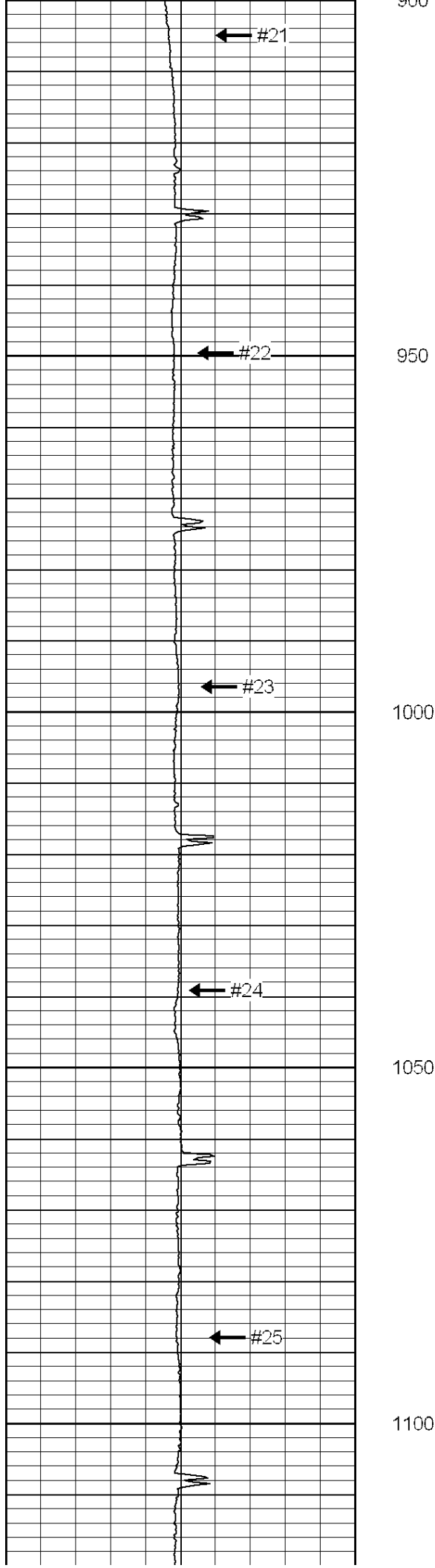
750

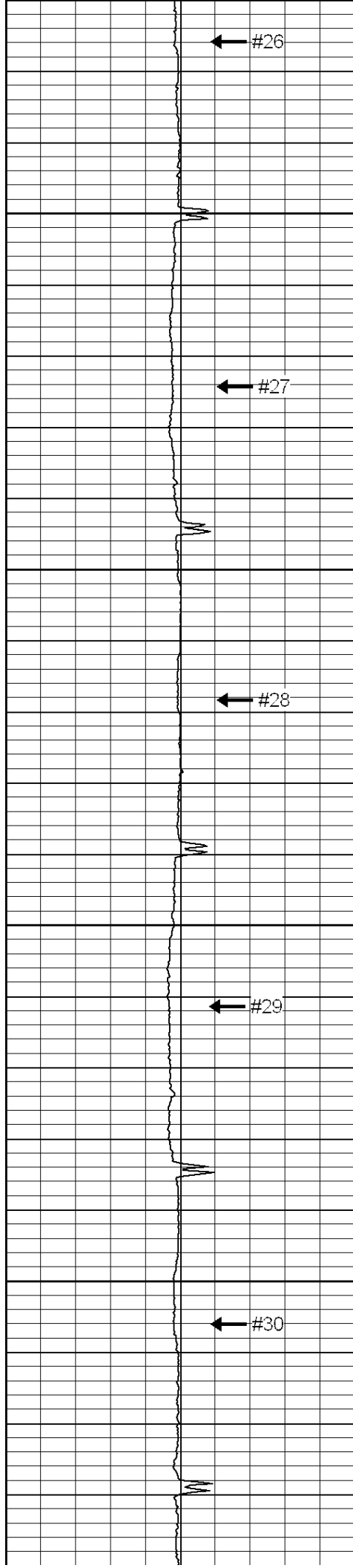
800

850

900





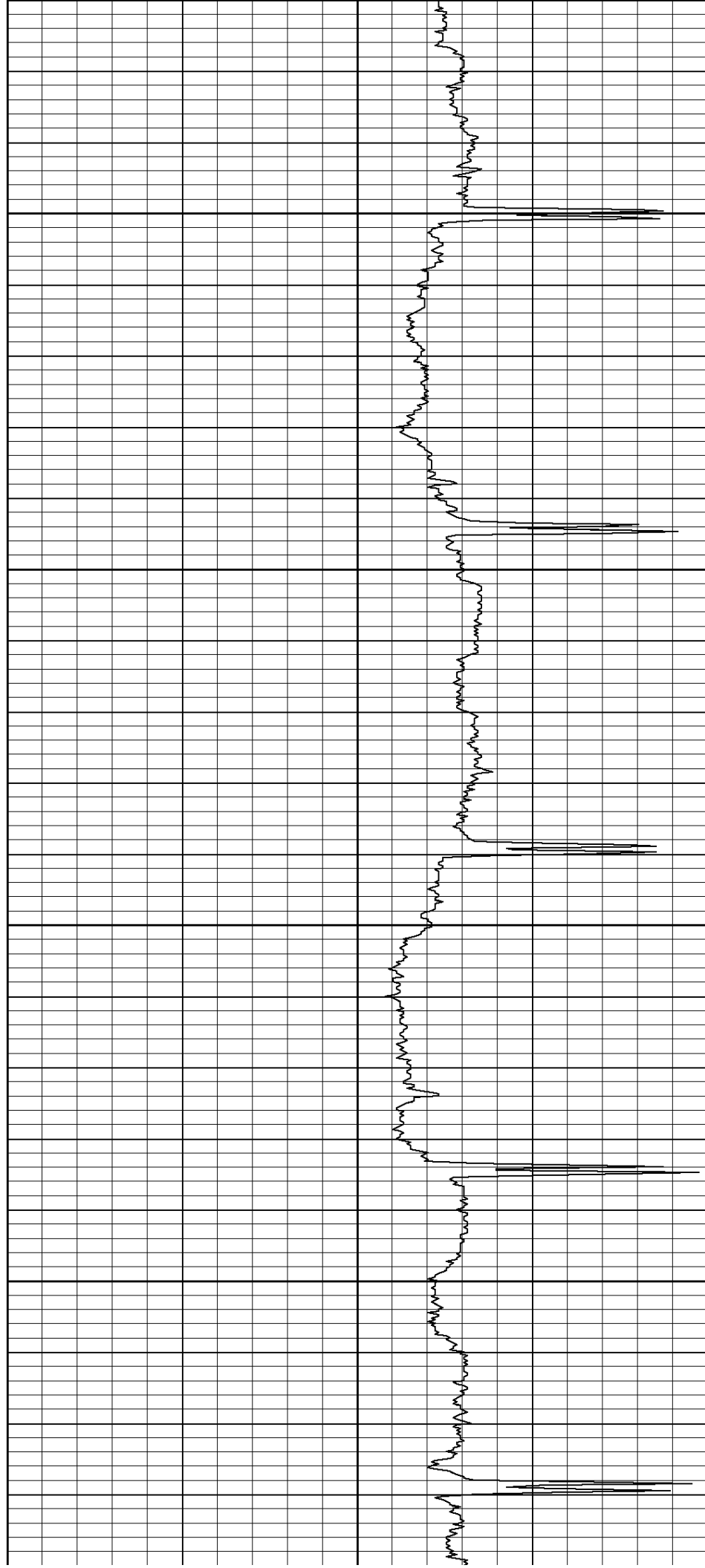


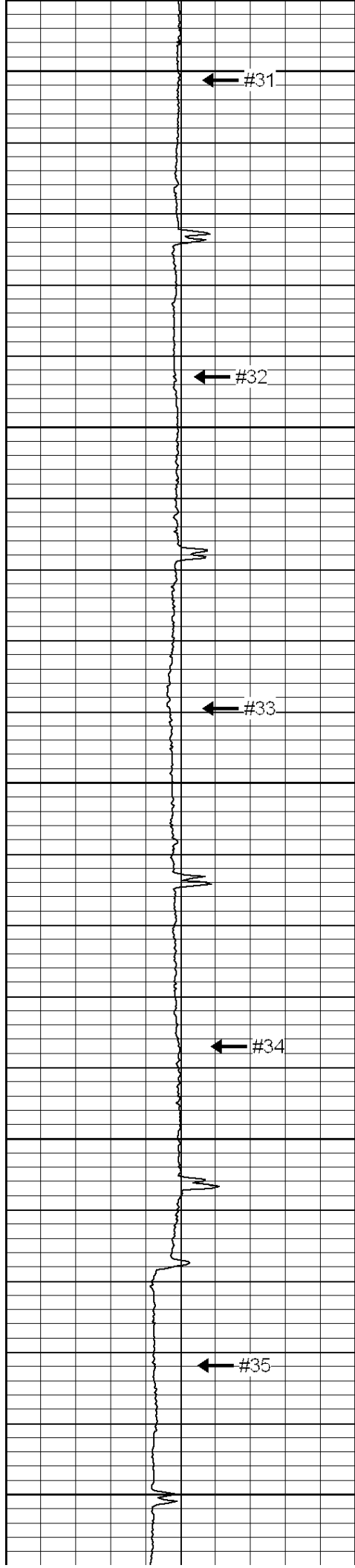
1150

1200

1250

1300





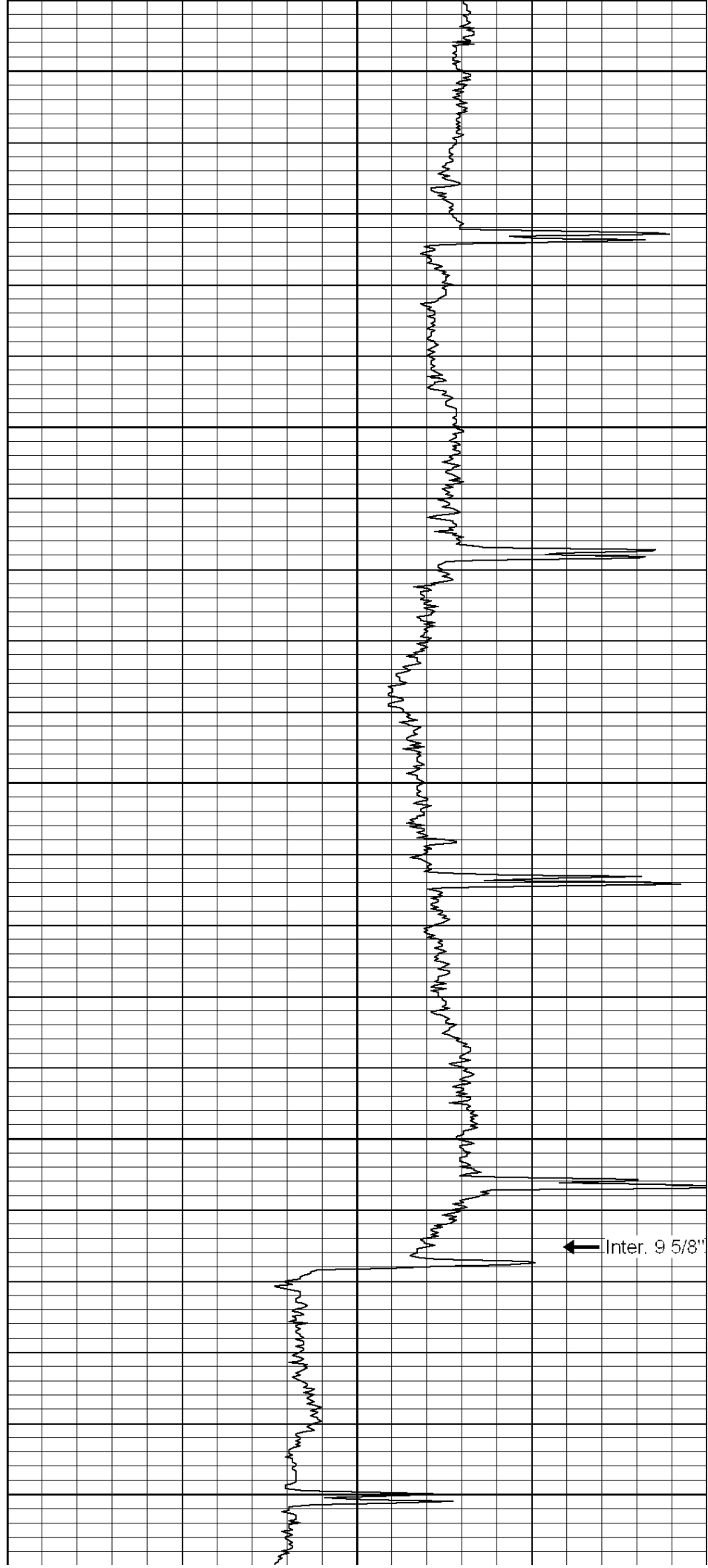
1350

1400

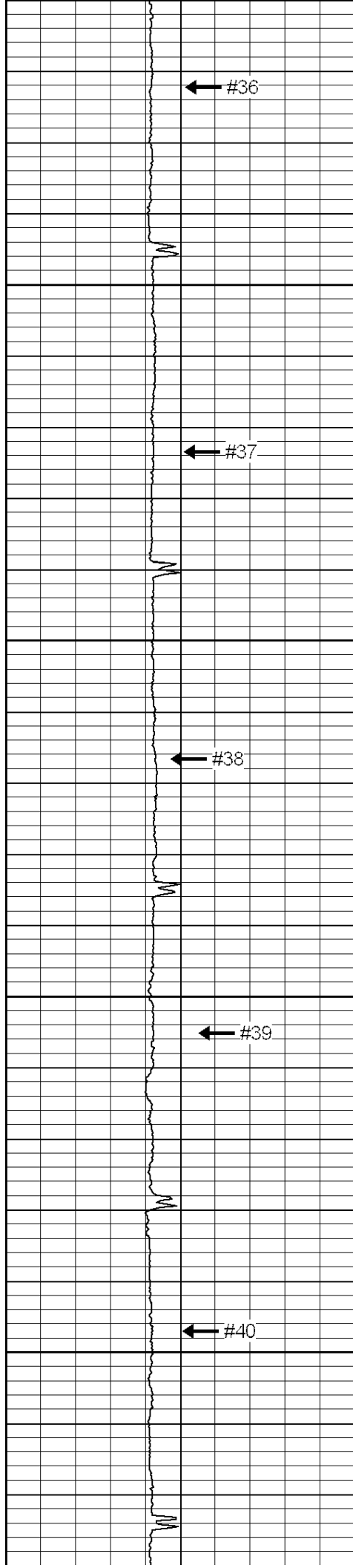
1450

1500

1550



Inter. 9 5/8"

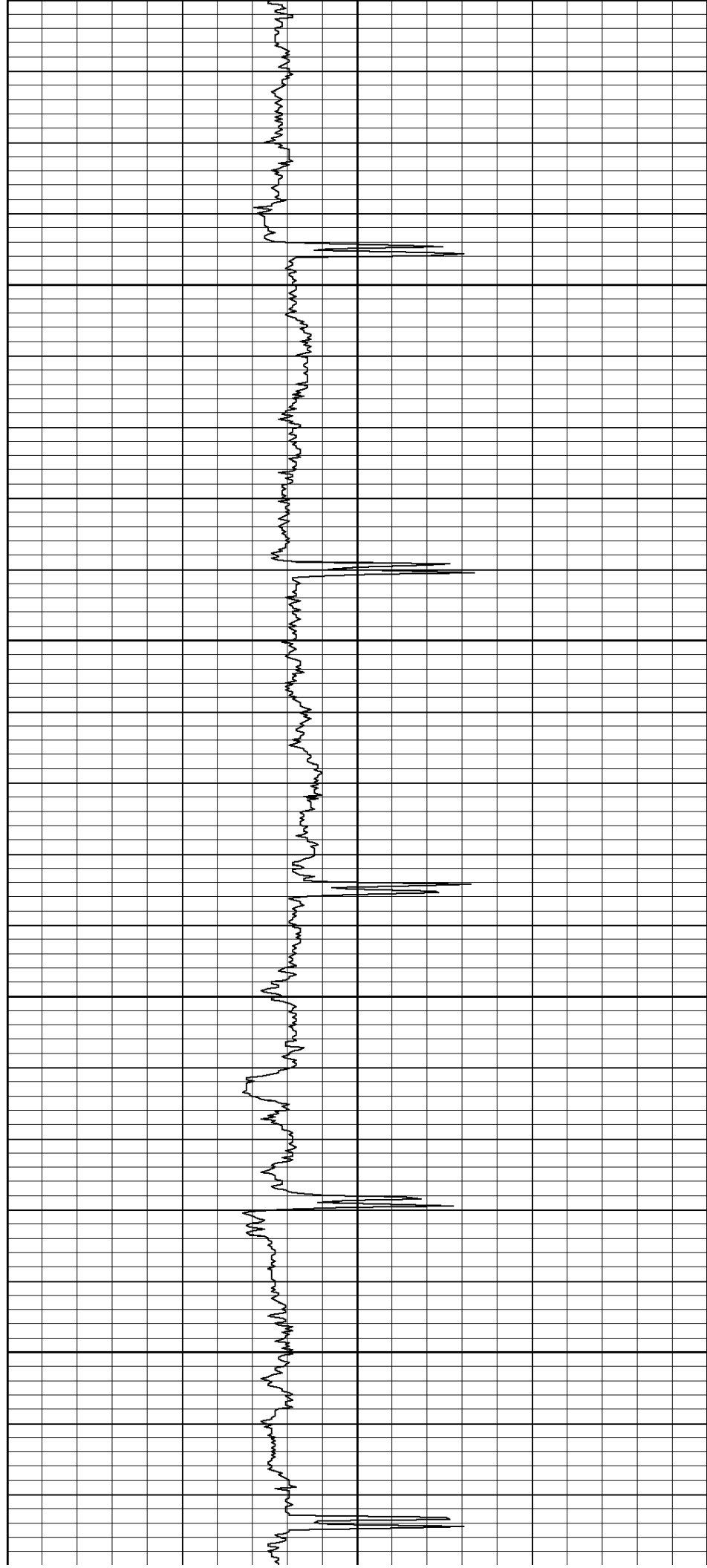


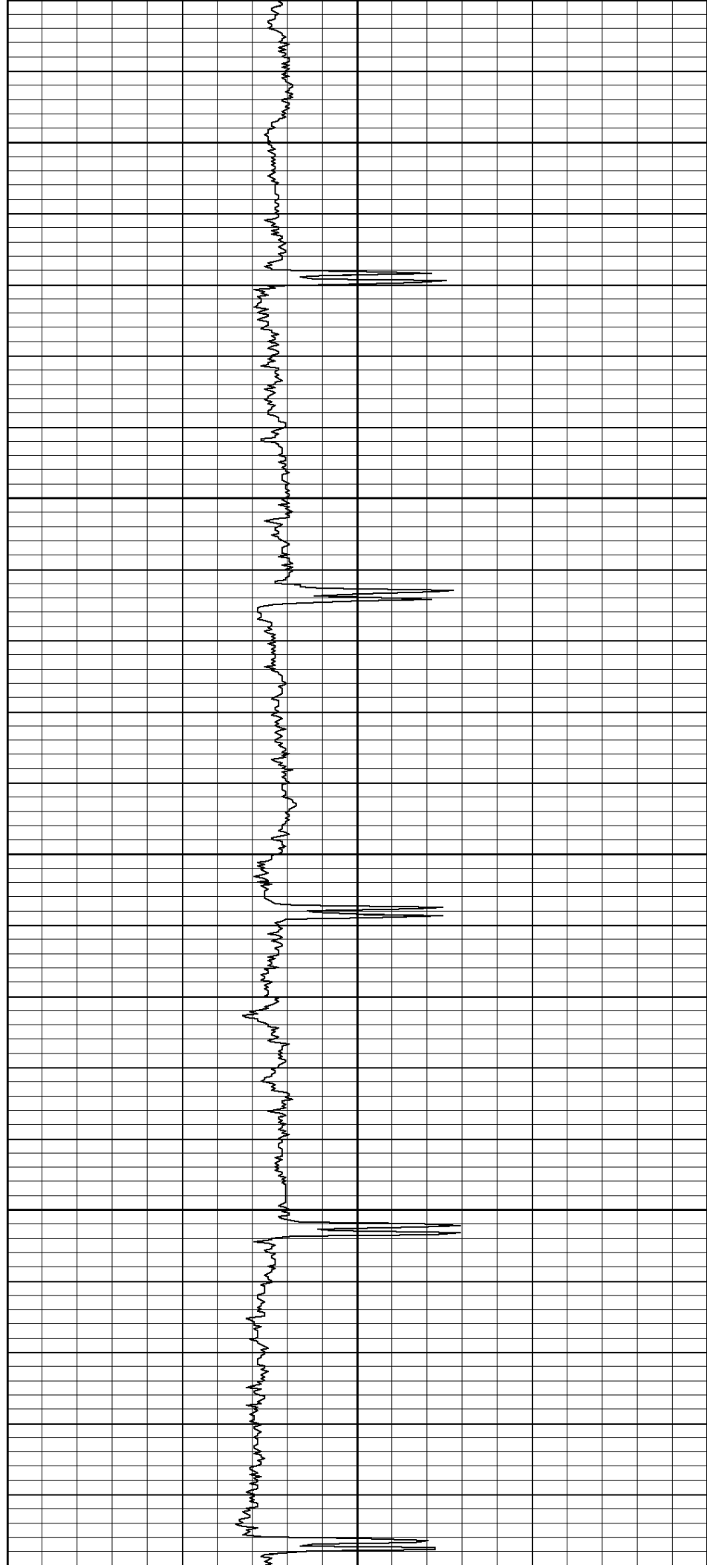
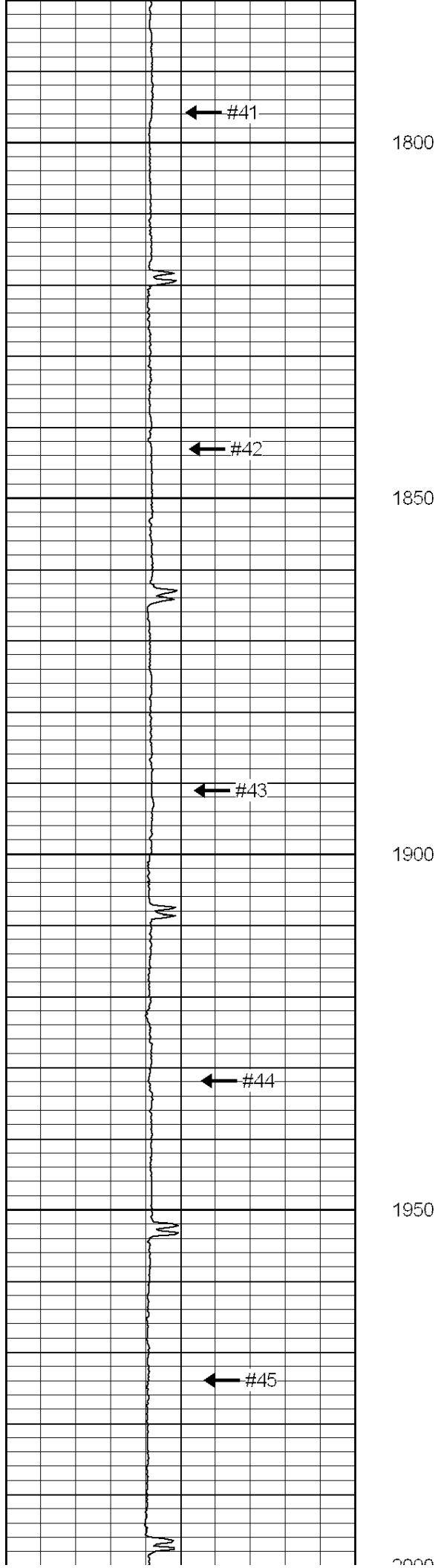
1600

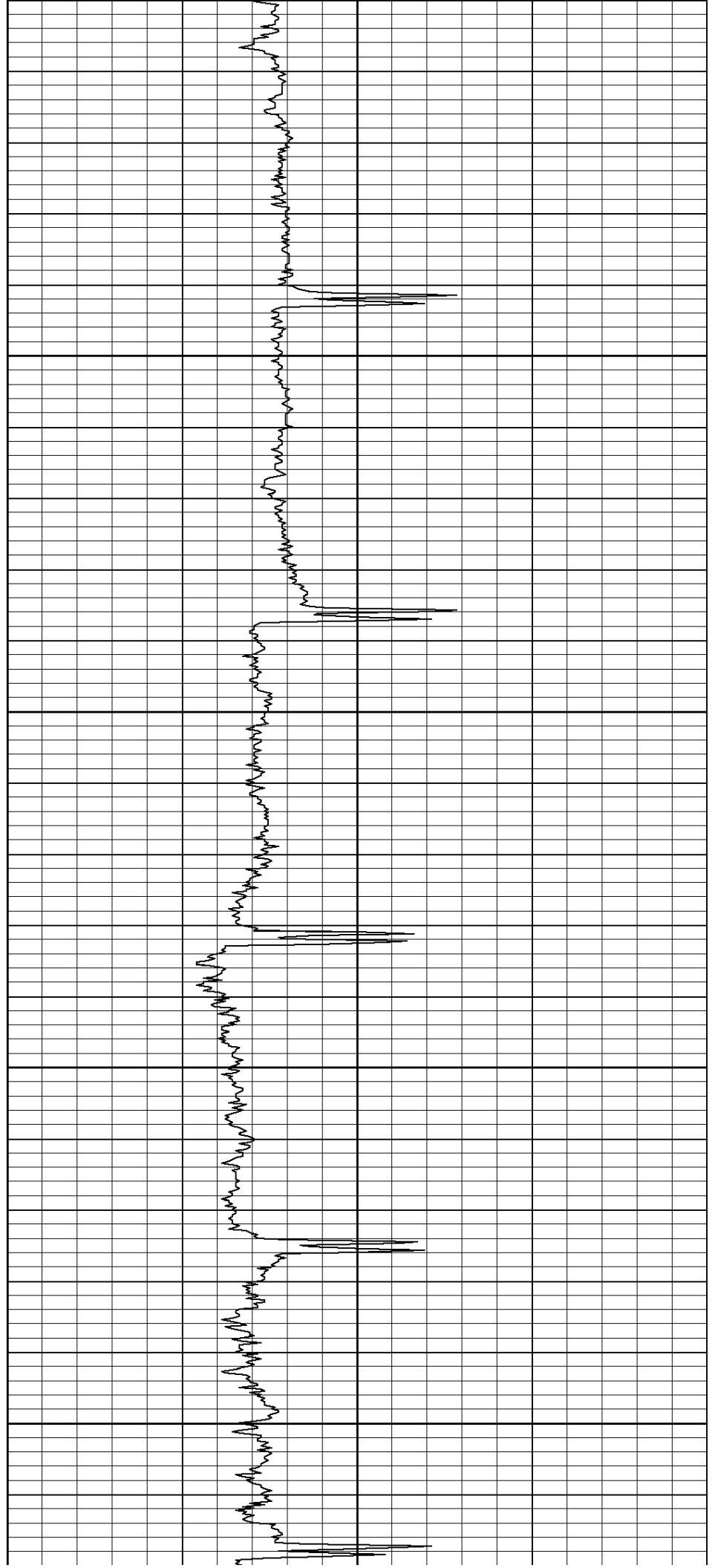
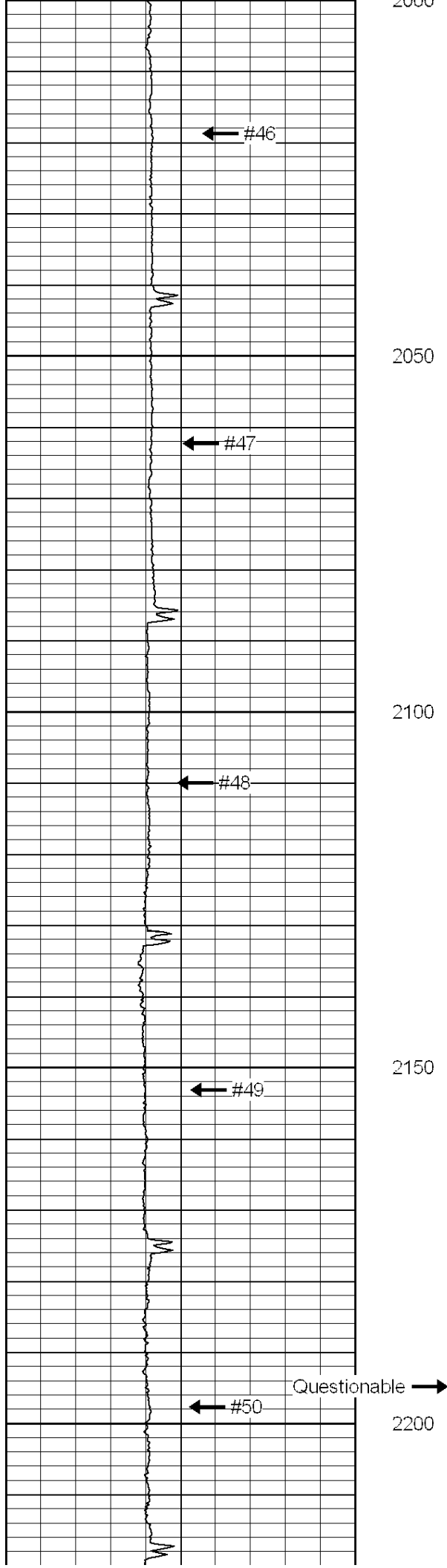
1650

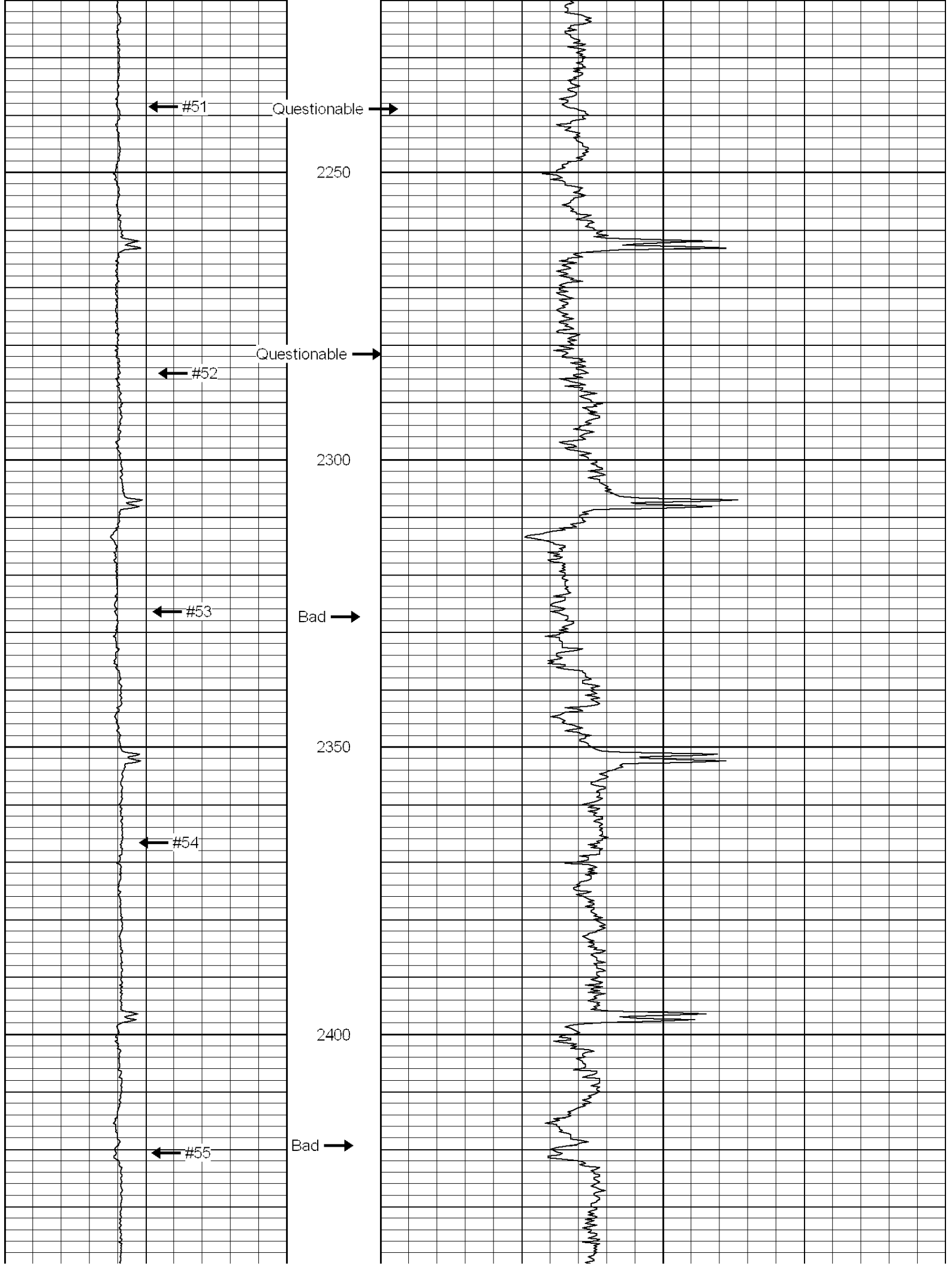
1700

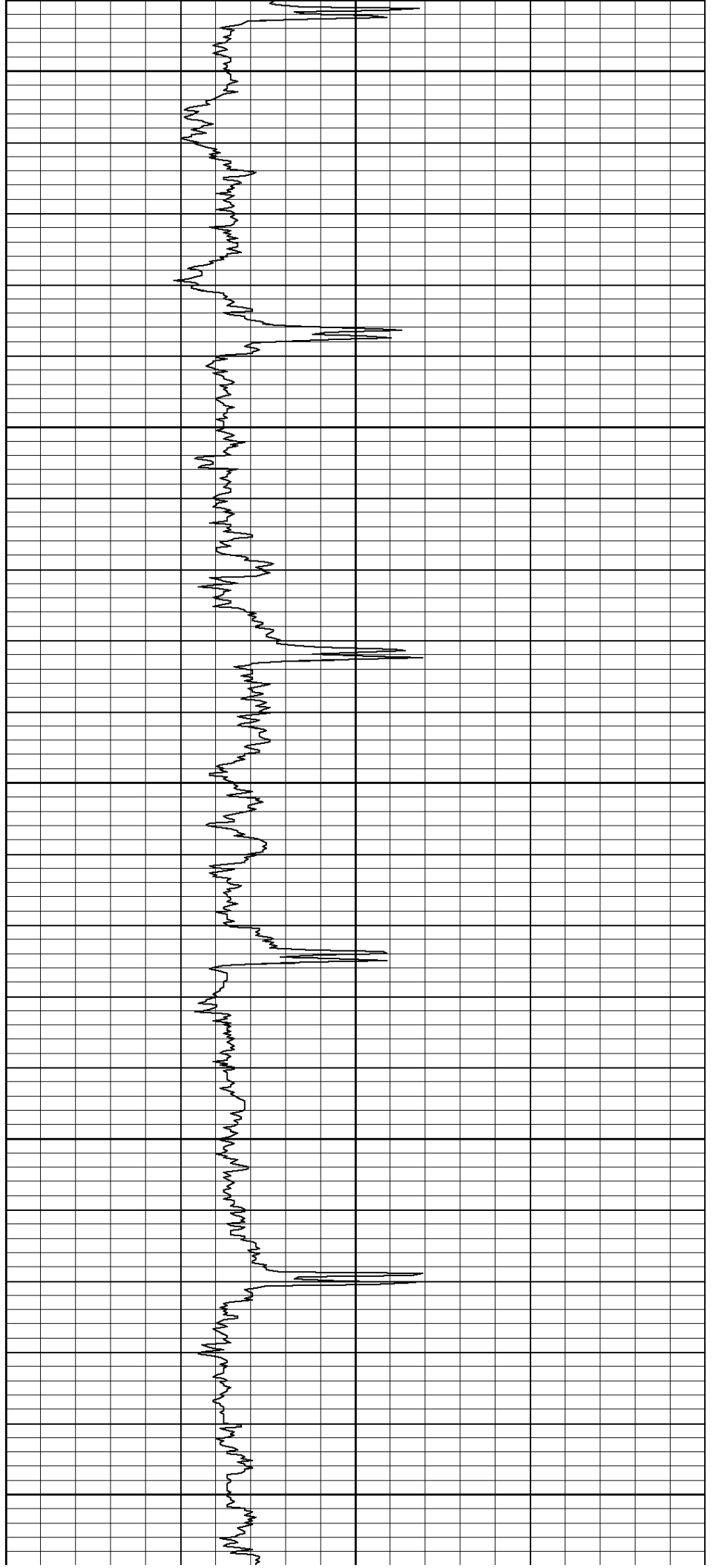
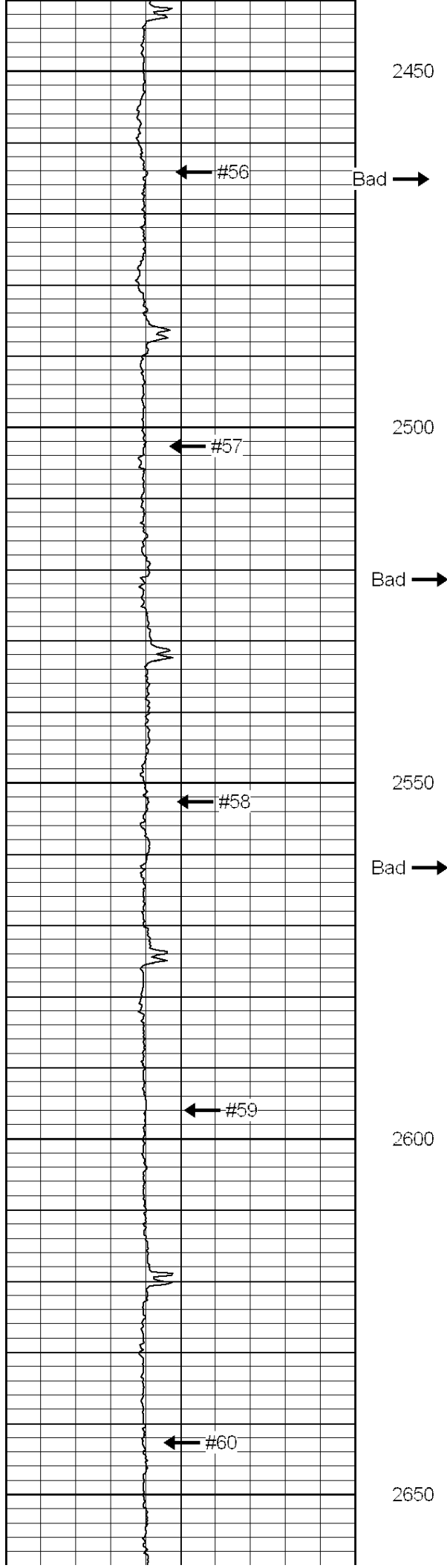
1750

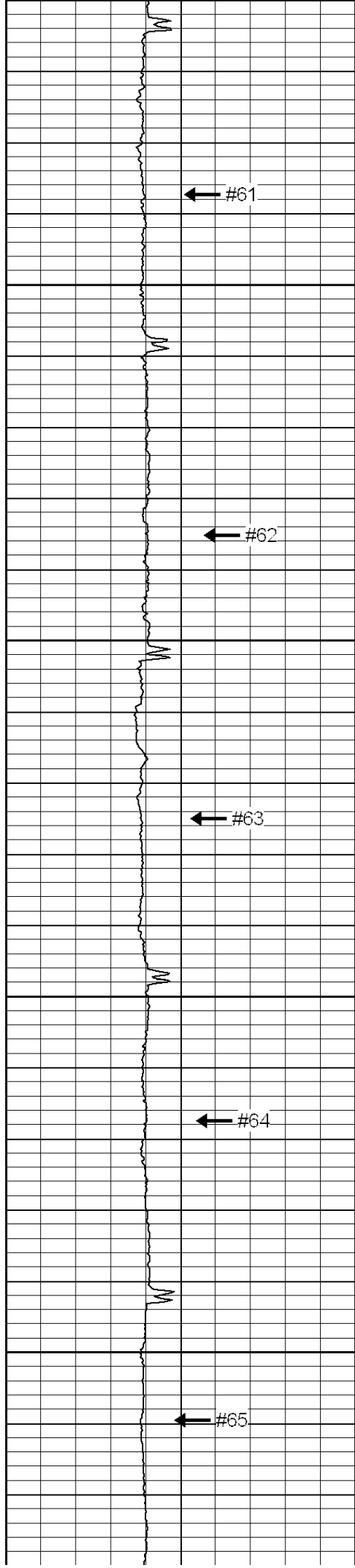












Bad →

2700

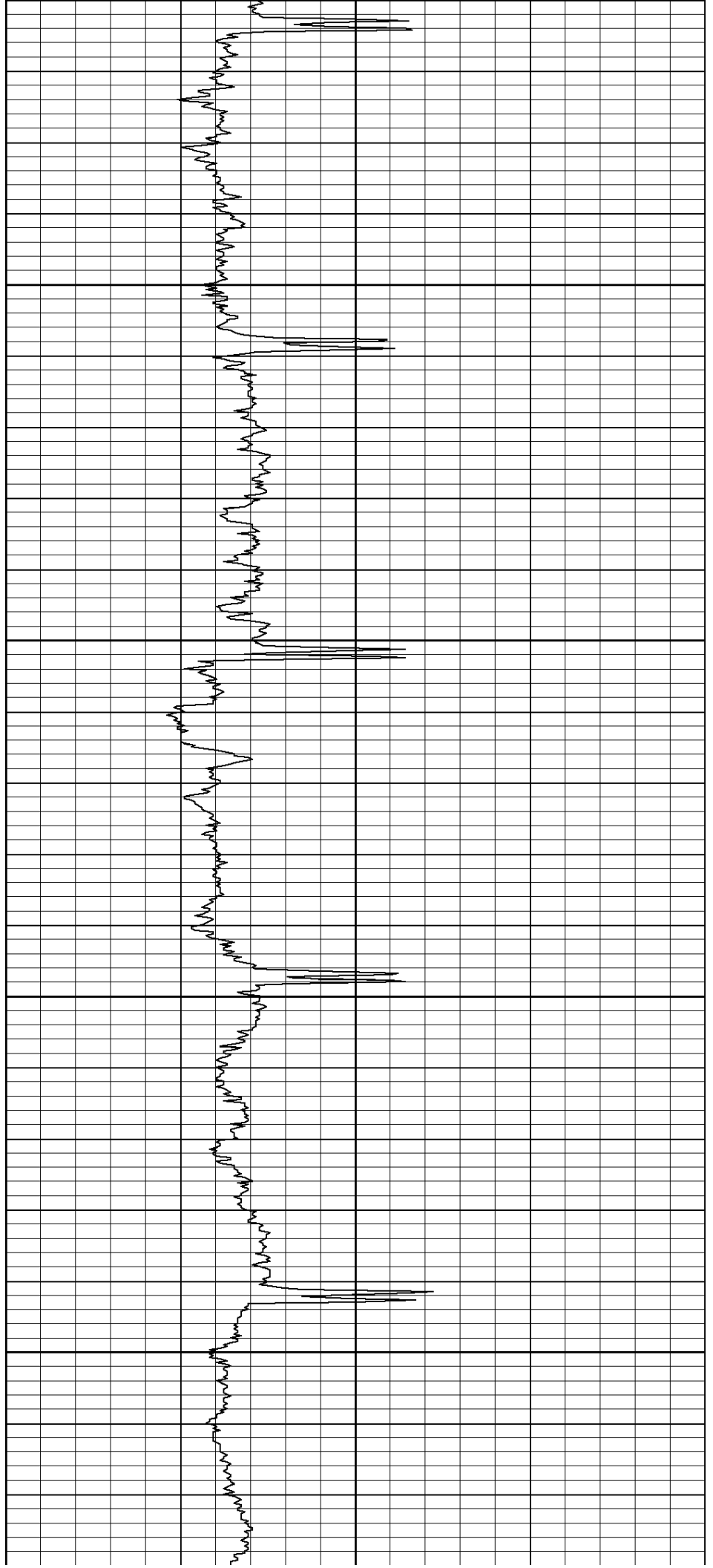
Bad →

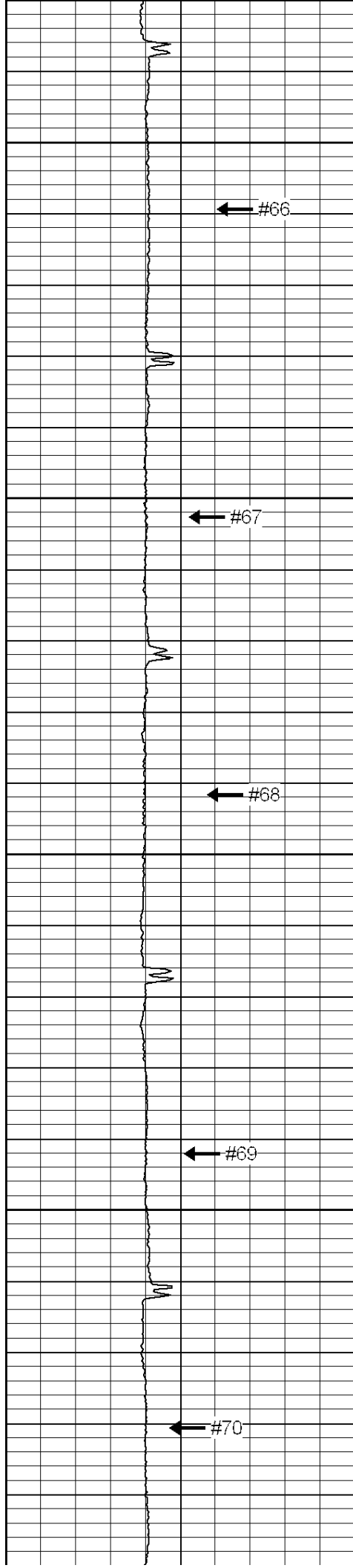
2750

Bad →

2800

2850





2900

← #66

2950

← #67

← #68

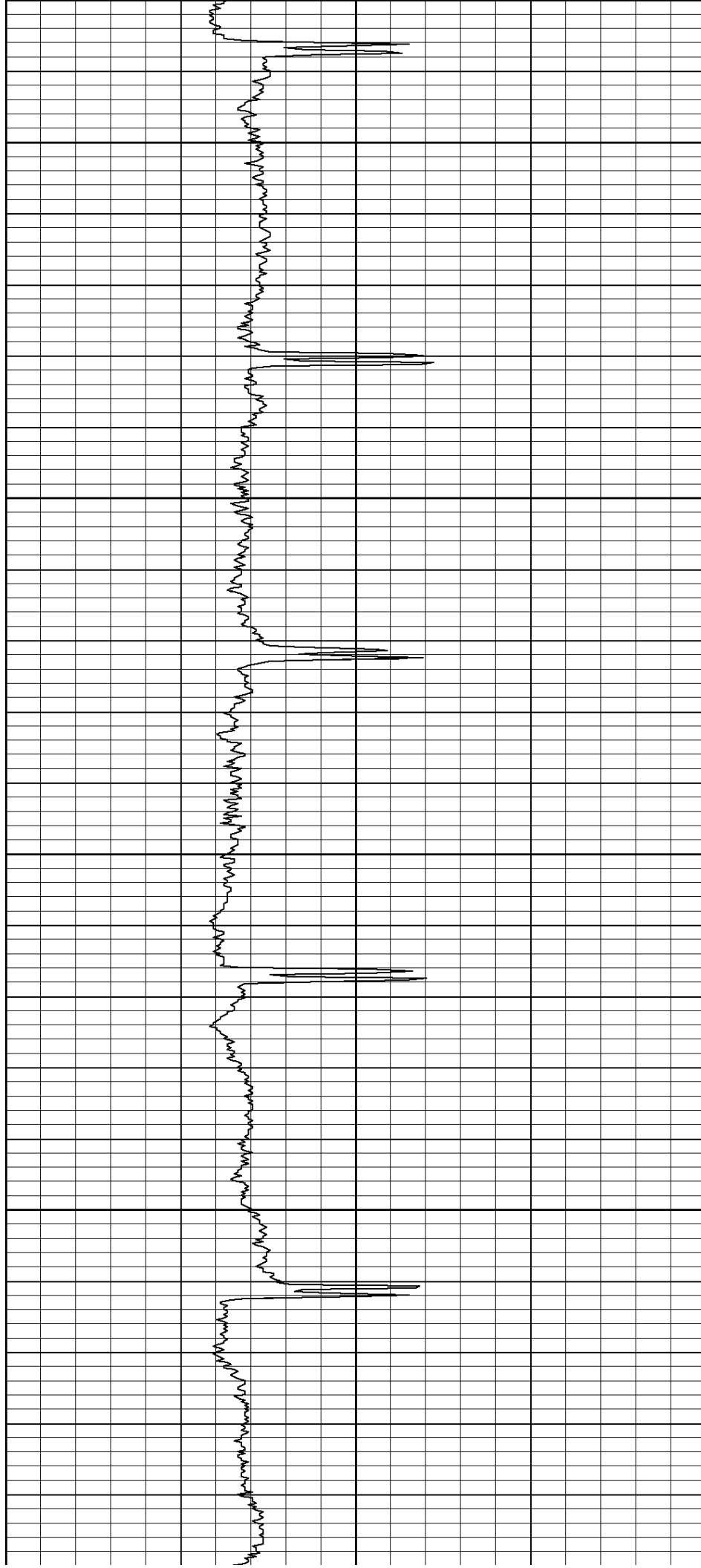
3000

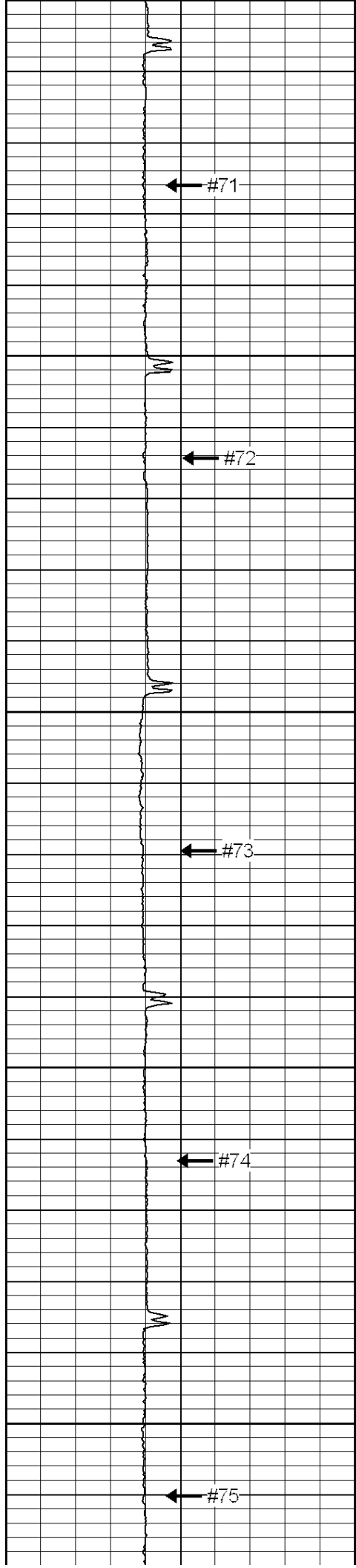
← #69

3050

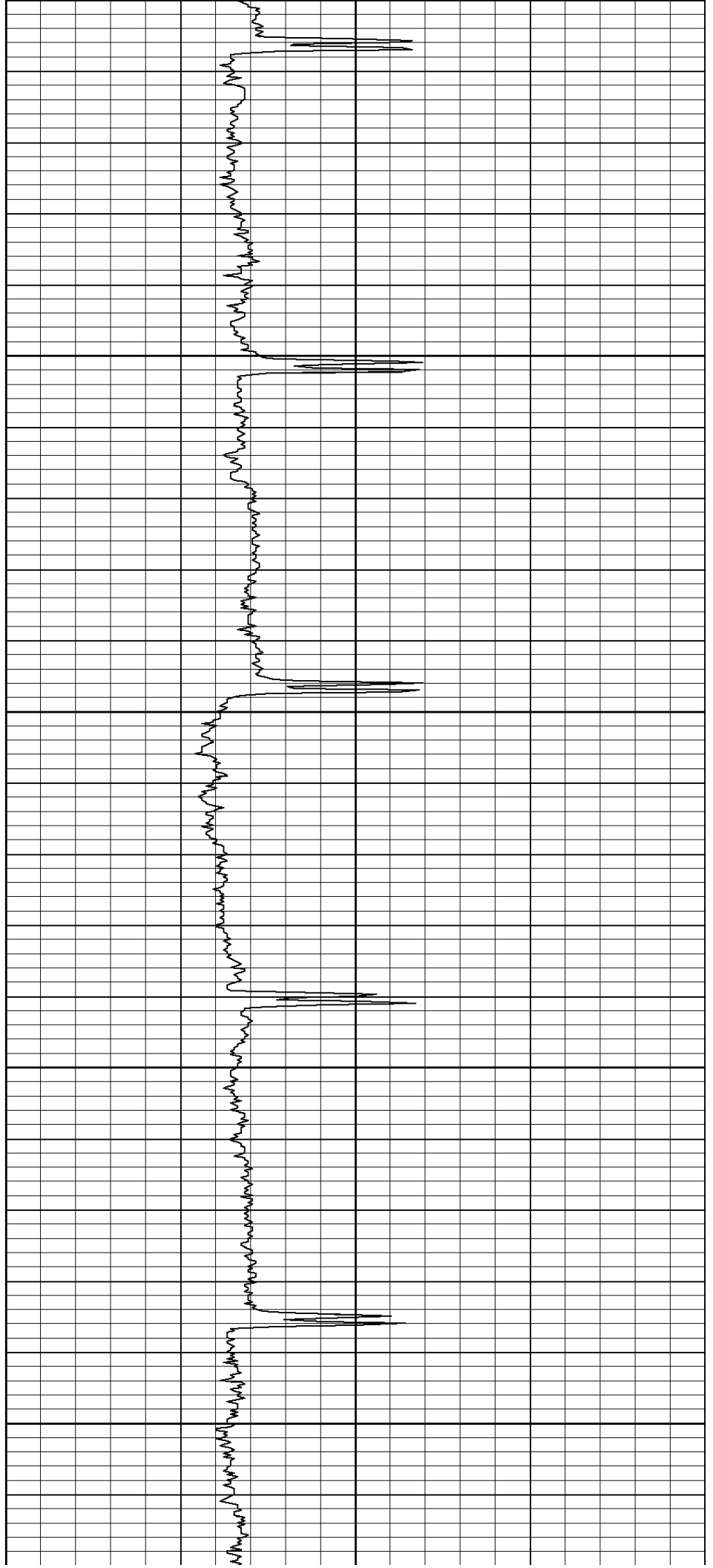
← #70

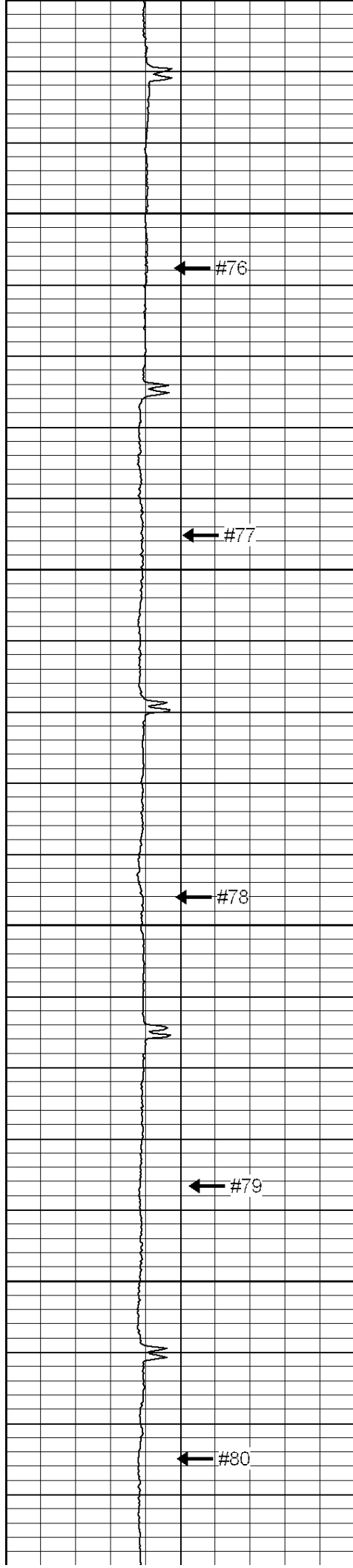
3100





3100
3150
3200
3250
3300



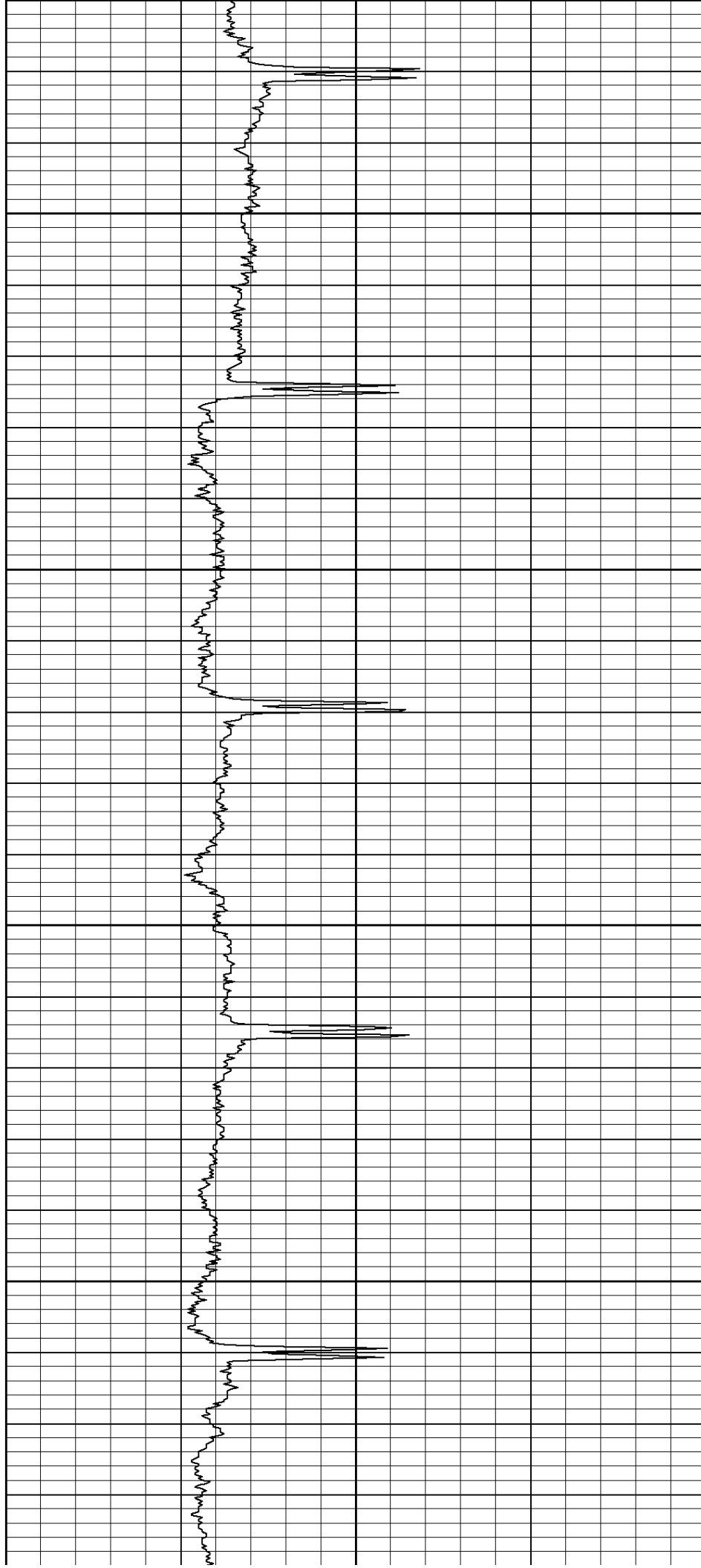


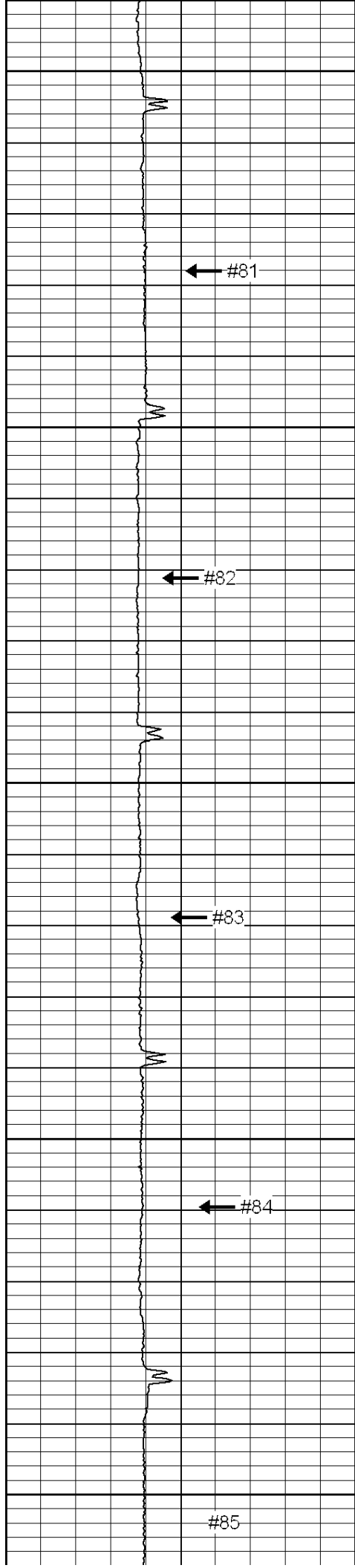
3350

3400

3450

3500





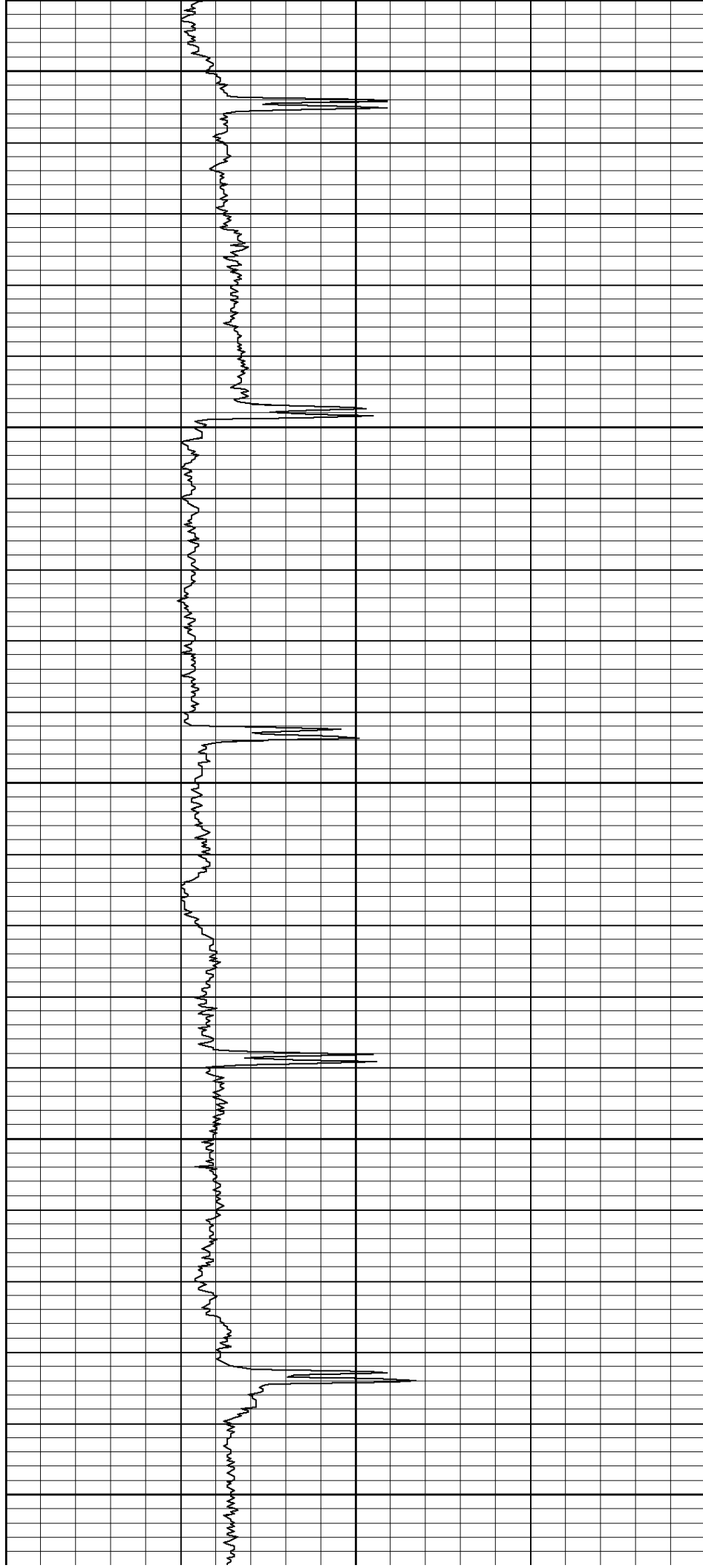
3550

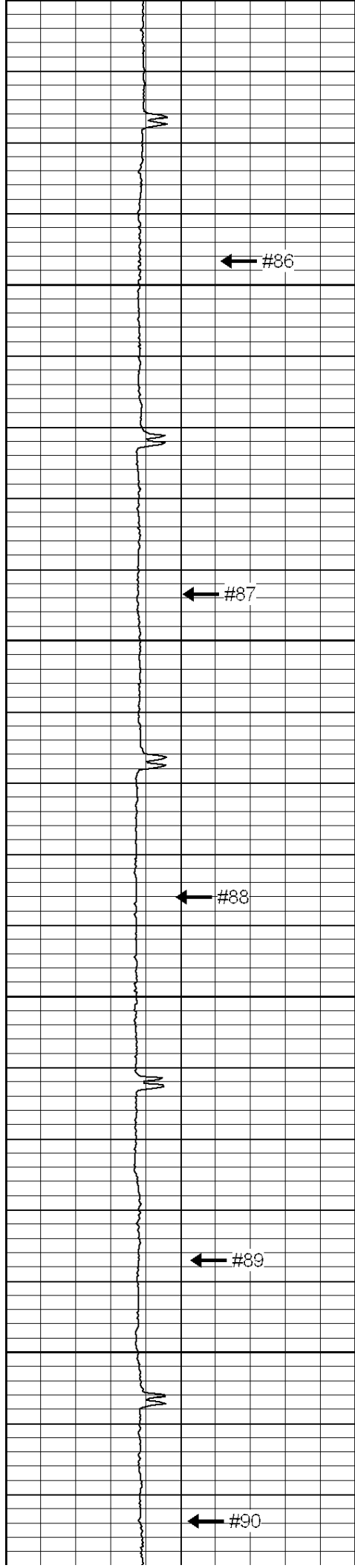
3600

3650

3700

3750



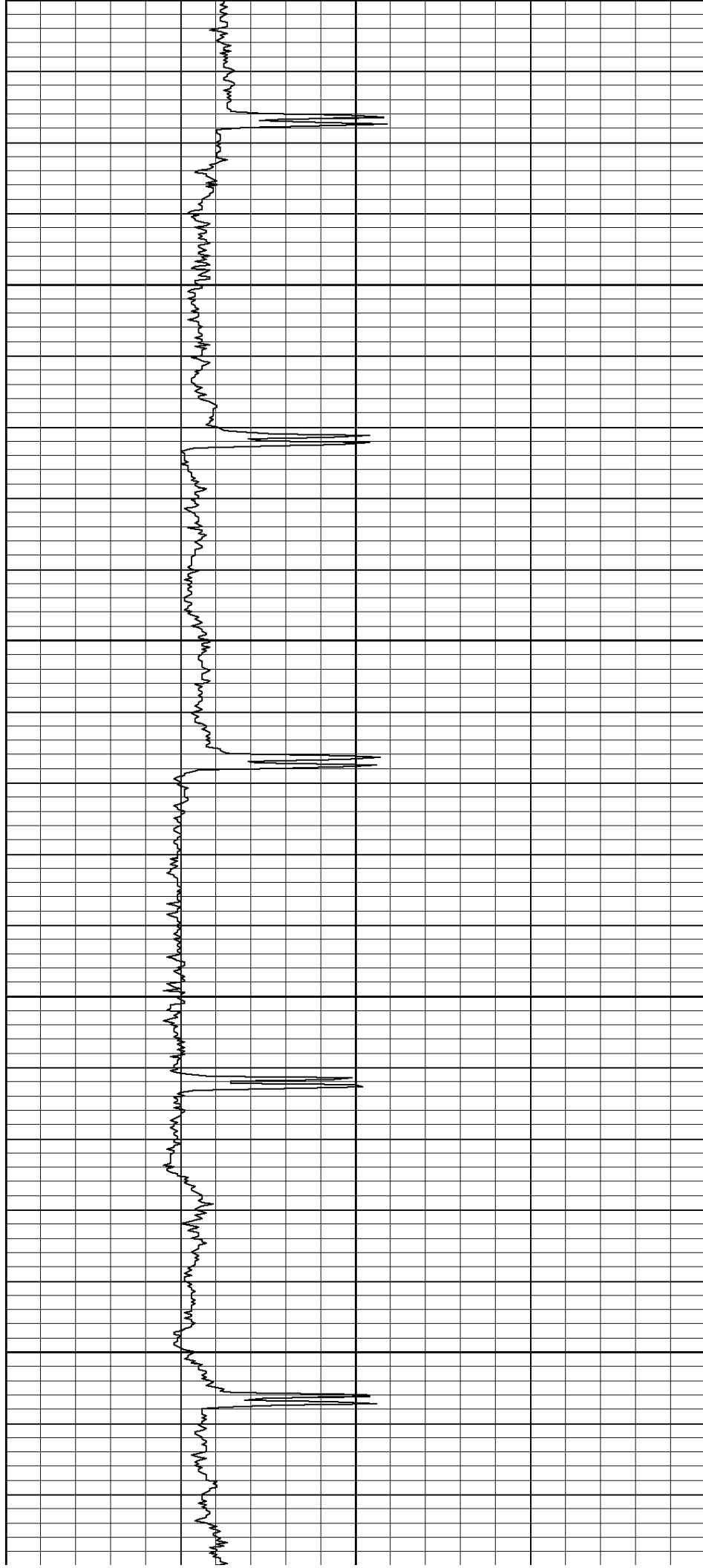


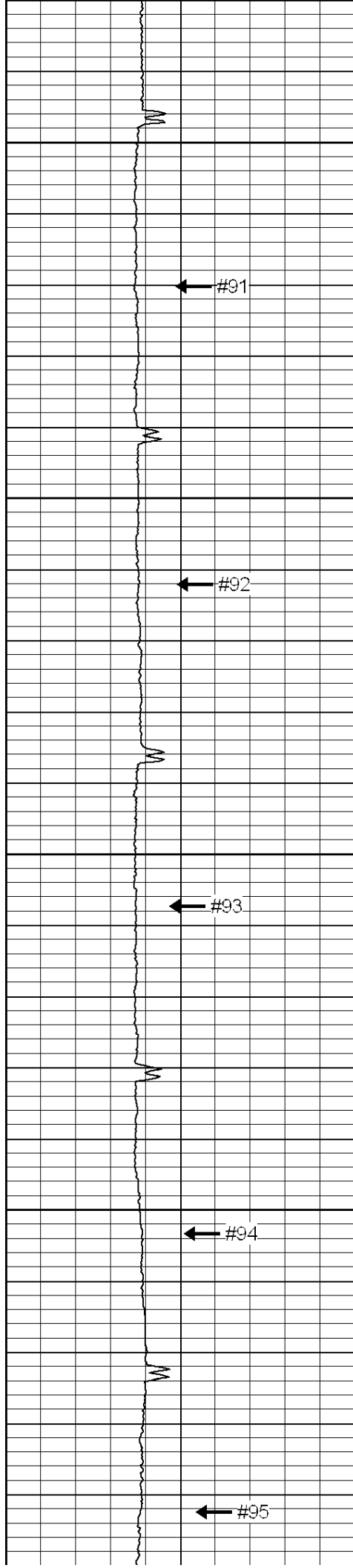
3800

3850

3900

3950





4000

4050

4100

4150

4200

